

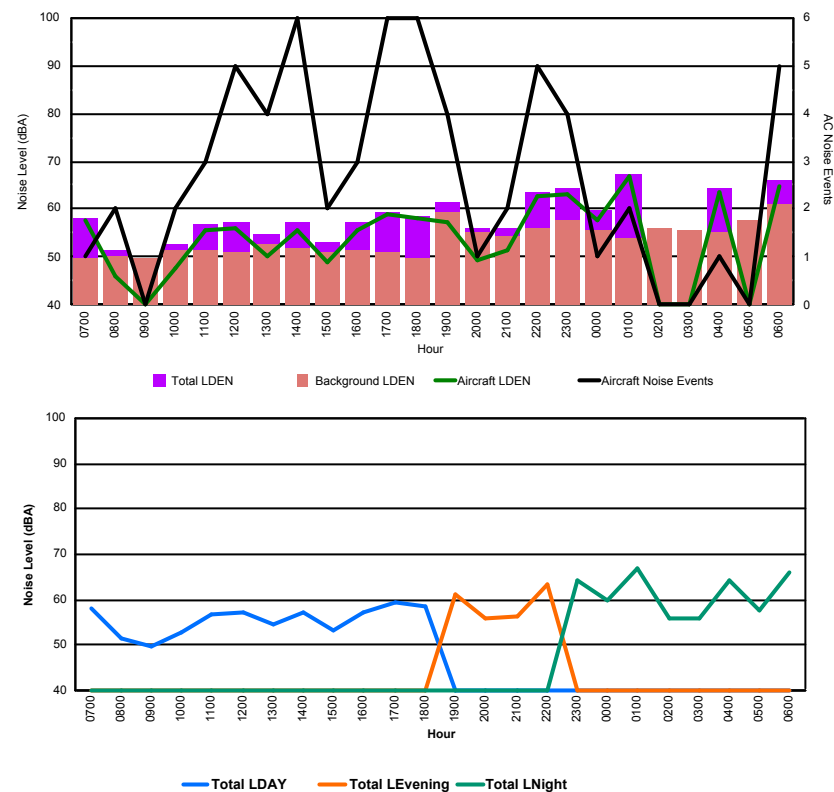


## Luxembourg Airport Noise Distribution by Hour

Between 07/04/2018 00:00:00 and 07/04/2018 23:59:59 (Local Time)

Day	Aircraft Events	Total LDEN dB (A)	Aircraft LDEN dB(A)	Background LDEN dB(A)	Total LDay dB(A)	Total LEvening dB(A)	Total LNight dB (A)
07/04/18 7:00	1	58.2	57.5	49.8	58.2	-	-
07/04/18 8:00	2	51.6	46.2	50.2	51.6	-	-
07/04/18 9:00	-	49.9	-	49.9	49.9	-	-
07/04/18 10:00	2	52.9	47.6	51.4	52.9	-	-
07/04/18 11:00	3	56.8	55.5	51.4	56.8	-	-
07/04/18 12:00	5	57.1	56.0	51.0	57.1	-	-
07/04/18 13:00	4	54.6	50.1	52.8	54.6	-	-
07/04/18 14:00	6	57.2	55.8	51.9	57.2	-	-
07/04/18 15:00	2	53.2	49.0	51.2	53.2	-	-
07/04/18 16:00	3	57.1	55.8	51.3	57.1	-	-
07/04/18 17:00	6	59.5	58.9	50.9	59.5	-	-
07/04/18 18:00	6	58.6	58.1	49.9	58.6	-	-
07/04/18 19:00	4	61.4	57.3	59.4	-	61.4	-
07/04/18 20:00	1	56.1	49.3	55.1	-	56.1	-
07/04/18 21:00	2	56.2	51.4	54.5	-	56.2	-
07/04/18 22:00	5	63.5	62.6	56.2	-	63.5	-
07/04/18 23:00	4	64.2	63.2	57.5	-	-	64.2
08/04/18 0:00	1	59.8	57.6	55.8	-	-	59.8
08/04/18 1:00	2	67.1	66.9	54.0	-	-	67.1
08/04/18 2:00	-	56.1	-	56.1	-	-	56.1
08/04/18 3:00	-	55.7	-	55.7	-	-	55.7
08/04/18 4:00	1	64.2	63.6	55.0	-	-	64.2
08/04/18 5:00	-	57.5	-	57.6	-	-	57.5
08/04/18 6:00	5	66.2	64.8	61.0	-	-	66.2
	<b>65</b>	<b>60.4</b>	<b>59.0</b>	<b>55.0</b>	<b>56.4</b>	<b>60.5</b>	<b>63.2</b>

Location: Roodt/Syr NMT # 1



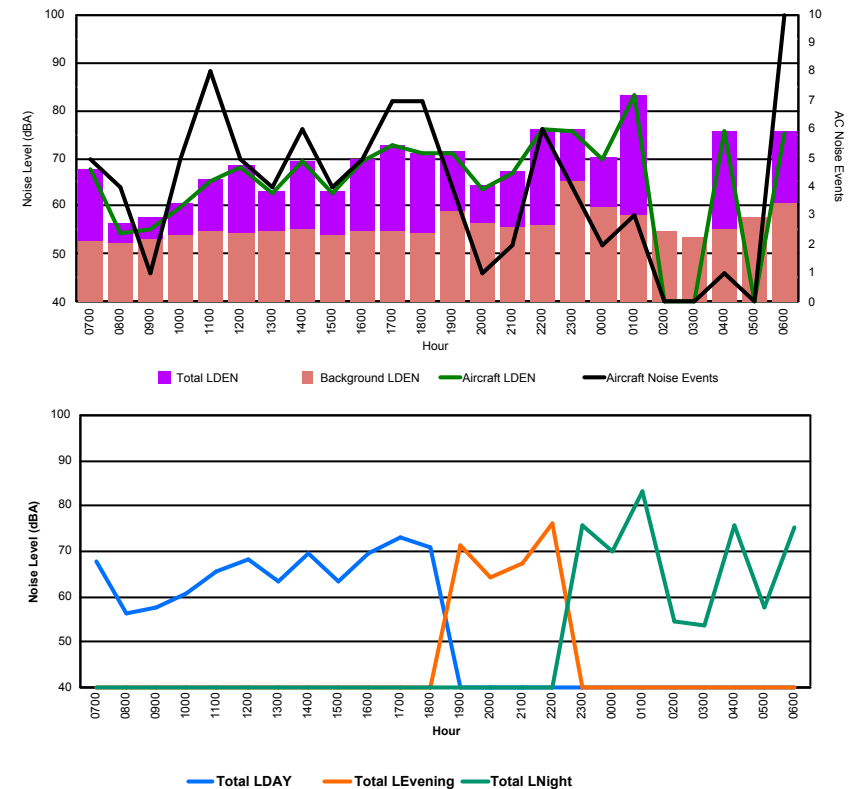


## Luxembourg Airport Noise Distribution by Hour

Between 07/04/2018 00:00:00 and 07/04/2018 23:59:59 (Local Time)

Day	Aircraft Events	Total LDEN dB (A)	Aircraft LDEN dB(A)	Background LDEN dB(A)	Total LDay dB(A)	Total LEvening dB(A)	Total LNight dB (A)
07/04/18 7:00	5	67.9	67.7	52.9	67.9	-	-
07/04/18 8:00	4	56.4	54.3	52.2	56.4	-	-
07/04/18 9:00	1	57.5	55.4	53.3	57.5	-	-
07/04/18 10:00	5	60.8	59.8	53.8	60.8	-	-
07/04/18 11:00	8	65.6	65.3	54.7	65.6	-	-
07/04/18 12:00	5	68.4	68.2	54.5	68.4	-	-
07/04/18 13:00	4	63.3	62.7	54.8	63.3	-	-
07/04/18 14:00	6	69.4	69.2	55.1	69.4	-	-
07/04/18 15:00	4	63.2	62.6	54.1	63.2	-	-
07/04/18 16:00	5	69.6	69.4	54.8	69.6	-	-
07/04/18 17:00	7	72.9	72.8	54.7	72.9	-	-
07/04/18 18:00	7	71.1	71.0	54.5	71.1	-	-
07/04/18 19:00	4	71.3	71.1	58.9	-	71.3	-
07/04/18 20:00	1	64.2	63.4	56.6	-	64.2	-
07/04/18 21:00	2	67.4	67.0	55.8	-	67.4	-
07/04/18 22:00	6	76.0	76.0	56.0	-	76.0	-
07/04/18 23:00	4	75.9	75.5	65.1	-	-	75.9
08/04/18 0:00	2	70.1	69.7	59.8	-	-	70.1
08/04/18 1:00	3	83.2	83.2	58.1	-	-	83.2
08/04/18 2:00	-	54.7	-	54.7	-	-	54.7
08/04/18 3:00	-	53.7	-	53.7	-	-	53.7
08/04/18 4:00	1	75.7	75.7	55.1	-	-	75.7
08/04/18 5:00	-	57.8	-	57.8	-	-	57.8
08/04/18 6:00	10	75.5	75.4	60.5	-	-	75.5
	<b>94</b>	<b>72.9</b>	<b>72.8</b>	<b>57.2</b>	<b>67.9</b>	<b>71.9</b>	<b>76.2</b>

Location: DVOR NMT # 2



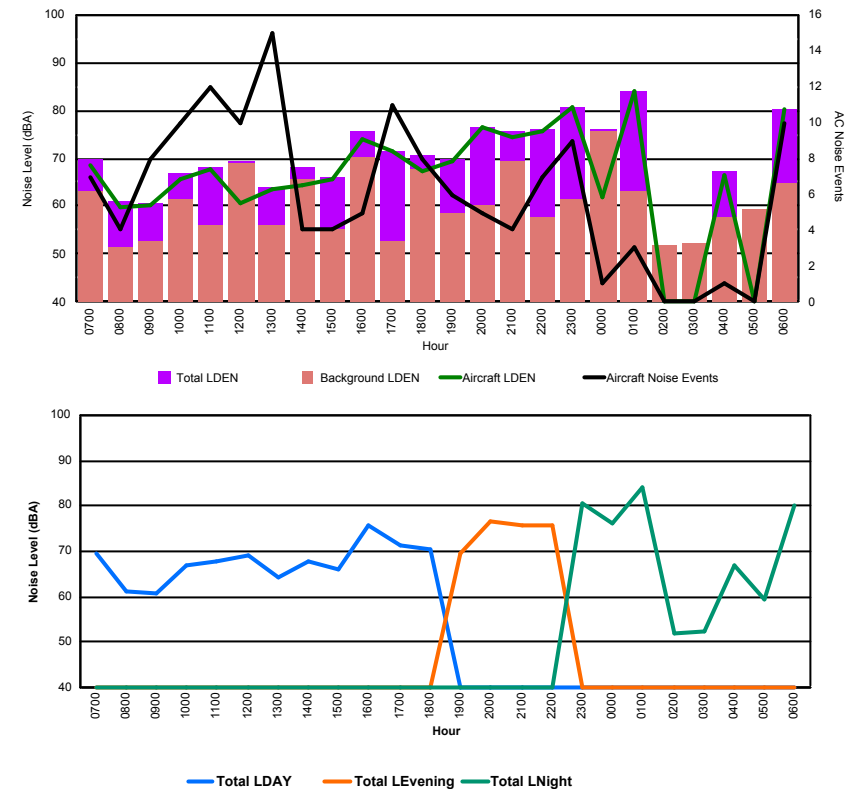


## Luxembourg Airport Noise Distribution by Hour

Between 07/04/2018 00:00:00 and 07/04/2018 23:59:59 (Local Time)

Day	Aircraft Events	Total LDEN dB (A)	Aircraft LDEN dB(A)	Background LDEN dB(A)	Total LDay dB(A)	Total LEvening dB(A)	Total LNight dB (A)
07/04/18 7:00	7	69.6	68.7	63.3	69.6	-	-
07/04/18 8:00	4	61.0	59.6	51.6	61.0	-	-
07/04/18 9:00	8	60.7	60.0	52.9	60.7	-	-
07/04/18 10:00	10	66.8	65.5	61.4	66.8	-	-
07/04/18 11:00	12	68.0	67.6	55.9	68.0	-	-
07/04/18 12:00	10	69.3	60.8	68.8	69.3	-	-
07/04/18 13:00	15	64.1	63.4	56.1	64.1	-	-
07/04/18 14:00	4	68.0	64.5	65.5	68.0	-	-
07/04/18 15:00	4	66.0	65.7	55.2	66.0	-	-
07/04/18 16:00	5	75.6	74.0	70.4	75.6	-	-
07/04/18 17:00	11	71.4	71.3	52.6	71.4	-	-
07/04/18 18:00	8	70.6	67.2	67.9	70.6	-	-
07/04/18 19:00	6	69.7	69.3	58.4	-	69.7	-
07/04/18 20:00	5	76.6	76.5	60.3	-	76.6	-
07/04/18 21:00	4	75.6	74.5	69.2	-	75.6	-
07/04/18 22:00	7	75.9	75.8	57.6	-	75.9	-
07/04/18 23:00	9	80.6	80.6	61.3	-	-	80.6
08/04/18 0:00	1	76.0	61.9	75.8	-	-	76.0
08/04/18 1:00	3	84.1	84.1	63.0	-	-	84.1
08/04/18 2:00	-	52.0	-	52.0	-	-	52.0
08/04/18 3:00	-	52.2	-	52.2	-	-	52.2
08/04/18 4:00	1	67.1	66.5	57.9	-	-	67.1
08/04/18 5:00	-	59.3	-	59.3	-	-	59.3
08/04/18 6:00	10	80.2	80.1	64.9	-	-	80.2
	<b>144</b>	<b>75.0</b>	<b>74.5</b>	<b>65.8</b>	<b>69.4</b>	<b>75.1</b>	<b>78.2</b>

Location: Mid Runway NMT # 3





## Luxembourg Airport Noise Distribution by Hour

Between 07/04/2018 00:00:00 and 07/04/2018 23:59:59 (Local Time)

Day	Aircraft Events	Total LDEN dB (A)	Aircraft LDEN dB(A)	Background LDEN dB(A)	Total LDay dB(A)	Total LEvening dB(A)	Total LNight dB (A)
07/04/18 7:00	5	67.5	66.6	62.3	67.5	-	-
07/04/18 8:00	-	60.7	-	62.4	60.7	-	-
07/04/18 9:00	6	63.8	60.9	60.9	63.8	-	-
07/04/18 10:00	8	66.9	65.6	61.2	66.9	-	-
07/04/18 11:00	9	66.5	65.1	61.1	66.5	-	-
07/04/18 12:00	4	63.3	60.4	60.4	63.3	-	-
07/04/18 13:00	5	63.1	59.8	60.5	63.1	-	-
07/04/18 14:00	7	66.0	64.7	60.3	66.0	-	-
07/04/18 15:00	3	66.9	65.9	60.2	66.9	-	-
07/04/18 16:00	4	68.0	67.2	60.0	68.0	-	-
07/04/18 17:00	6	66.6	65.5	60.3	66.6	-	-
07/04/18 18:00	4	64.1	61.8	60.5	64.1	-	-
07/04/18 19:00	2	65.5	57.7	64.7	-	65.5	-
07/04/18 20:00	4	74.4	73.9	63.8	-	74.4	-
07/04/18 21:00	3	73.9	73.5	63.0	-	73.9	-
07/04/18 22:00	2	70.9	70.1	63.5	-	70.9	-
07/04/18 23:00	3	76.8	76.3	67.6	-	-	76.8
08/04/18 0:00	2	75.2	74.6	68.2	-	-	75.2
08/04/18 1:00	2	66.5	57.9	67.1	-	-	66.5
08/04/18 2:00	-	65.6	-	66.6	-	-	65.6
08/04/18 3:00	-	66.0	-	66.5	-	-	66.0
08/04/18 4:00	-	65.7	-	66.0	-	-	65.7
08/04/18 5:00	-	66.4	-	66.8	-	-	66.4
08/04/18 6:00	6	76.6	76.1	68.0	-	-	76.6
	<b>85</b>	<b>70.3</b>	<b>69.3</b>	<b>64.4</b>	<b>65.7</b>	<b>72.3</b>	<b>72.6</b>

