

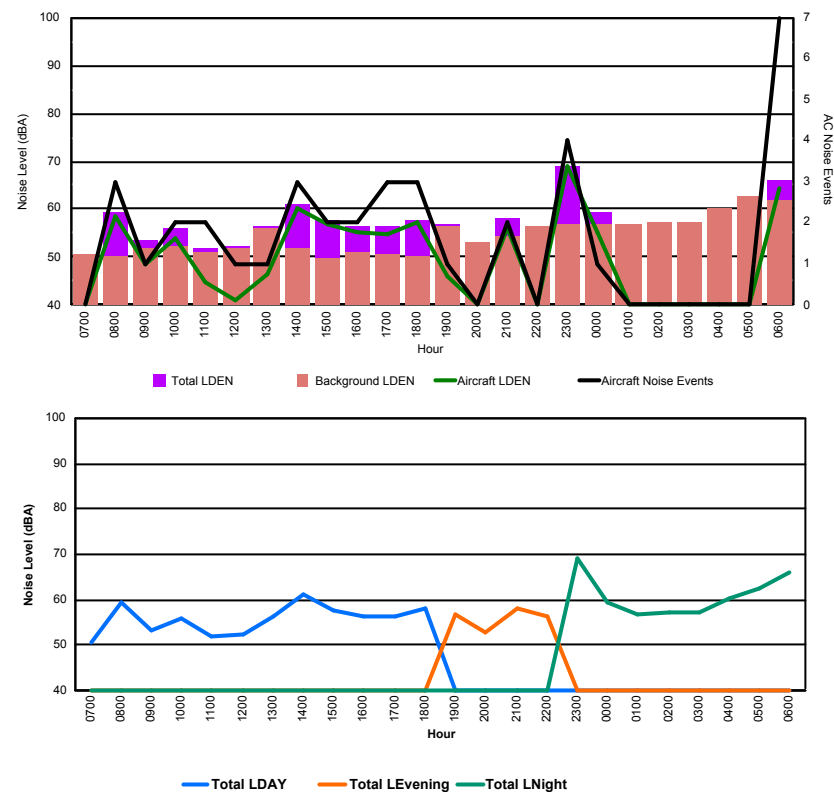


## Luxembourg Airport Noise Distribution by Hour

Between 06/04/2018 00:00:00 and 06/04/2018 23:59:59 (Local Time)

Day	Aircraft Events	Total LDEN dB (A)	Aircraft LDEN dB(A)	Background LDEN dB(A)	Total LDay dB(A)	Total LEvening dB(A)	Total LNight dB (A)
06/04/18 7:00	-	50.7	-	50.8	50.7	-	-
06/04/18 8:00	3	59.2	58.6	50.3	59.2	-	-
06/04/18 9:00	1	53.4	48.5	51.7	53.4	-	-
06/04/18 10:00	2	56.1	53.9	52.1	56.1	-	-
06/04/18 11:00	2	51.8	44.8	50.9	51.8	-	-
06/04/18 12:00	1	52.2	41.2	51.9	52.2	-	-
06/04/18 13:00	1	56.4	46.4	55.9	56.4	-	-
06/04/18 14:00	3	61.0	60.4	51.9	61.0	-	-
06/04/18 15:00	2	57.5	56.8	49.7	57.5	-	-
06/04/18 16:00	2	56.5	55.2	51.1	56.5	-	-
06/04/18 17:00	3	56.3	54.9	50.5	56.3	-	-
06/04/18 18:00	3	57.9	57.1	50.1	57.9	-	-
06/04/18 19:00	1	56.9	45.9	56.6	-	56.9	-
06/04/18 20:00	-	53.0	-	53.0	-	53.0	-
06/04/18 21:00	2	58.2	55.9	54.4	-	58.2	-
06/04/18 22:00	-	56.4	-	56.4	-	56.4	-
06/04/18 23:00	4	69.0	68.8	56.8	-	-	69.0
07/04/18 0:00	1	59.2	55.2	57.0	-	-	59.2
07/04/18 1:00	-	56.9	-	56.9	-	-	56.9
07/04/18 2:00	-	57.2	-	57.2	-	-	57.2
07/04/18 3:00	-	57.2	-	57.3	-	-	57.2
07/04/18 4:00	-	60.1	-	60.1	-	-	60.1
07/04/18 5:00	-	62.5	-	62.6	-	-	62.5
07/04/18 6:00	7	66.1	64.3	61.7	-	-	66.1
	<b>38</b>	<b>60.1</b>	<b>57.9</b>	<b>56.2</b>	<b>56.7</b>	<b>56.5</b>	<b>63.3</b>

Location: Roodt/Syr NMT # 1



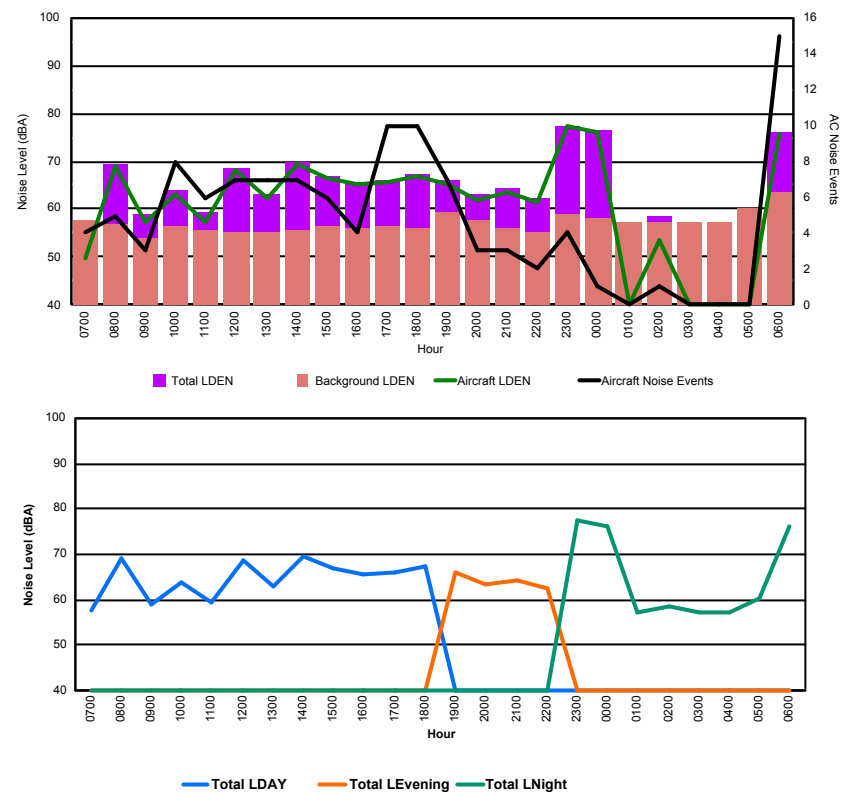


## Luxembourg Airport Noise Distribution by Hour

Between 06/04/2018 00:00:00 and 06/04/2018 23:59:59 (Local Time)

Day	Aircraft Events	Total LDEN dB (A)	Aircraft LDEN dB(A)	Background LDEN dB(A)	Total LDay dB(A)	Total LEvening dB(A)	Total LNight dB (A)
06/04/18 7:00	4	57.7	49.7	57.7	57.7	-	-
06/04/18 8:00	5	69.2	68.9	56.7	69.2	-	-
06/04/18 9:00	3	58.9	57.3	54.0	58.9	-	-
06/04/18 10:00	8	64.0	63.1	56.6	64.0	-	-
06/04/18 11:00	6	59.5	57.3	55.6	59.5	-	-
06/04/18 12:00	7	68.5	68.3	55.2	68.5	-	-
06/04/18 13:00	7	63.1	62.4	55.4	63.1	-	-
06/04/18 14:00	7	69.6	69.4	55.6	69.6	-	-
06/04/18 15:00	6	66.8	66.4	56.4	66.8	-	-
06/04/18 16:00	4	65.5	65.0	56.0	65.5	-	-
06/04/18 17:00	10	66.0	65.5	56.5	66.0	-	-
06/04/18 18:00	10	67.3	67.0	56.0	67.3	-	-
06/04/18 19:00	7	66.1	65.2	59.2	-	66.1	-
06/04/18 20:00	3	63.3	62.0	57.5	-	63.3	-
06/04/18 21:00	3	64.2	63.5	56.2	-	64.2	-
06/04/18 22:00	2	62.3	61.4	55.3	-	62.3	-
06/04/18 23:00	4	77.4	77.4	58.9	-	-	77.4
07/04/18 0:00	1	76.3	76.2	58.1	-	-	76.3
07/04/18 1:00	-	57.3	-	57.3	-	-	57.3
07/04/18 2:00	1	58.7	53.6	57.1	-	-	58.7
07/04/18 3:00	-	57.4	-	57.4	-	-	57.4
07/04/18 4:00	-	57.4	-	57.4	-	-	57.4
07/04/18 5:00	-	60.2	-	60.2	-	-	60.2
07/04/18 6:00	15	76.1	75.8	63.4	-	-	76.1
	<b>113</b>	<b>69.2</b>	<b>68.9</b>	<b>57.6</b>	<b>66.1</b>	<b>64.2</b>	<b>72.5</b>

Location: DVOR NMT # 2



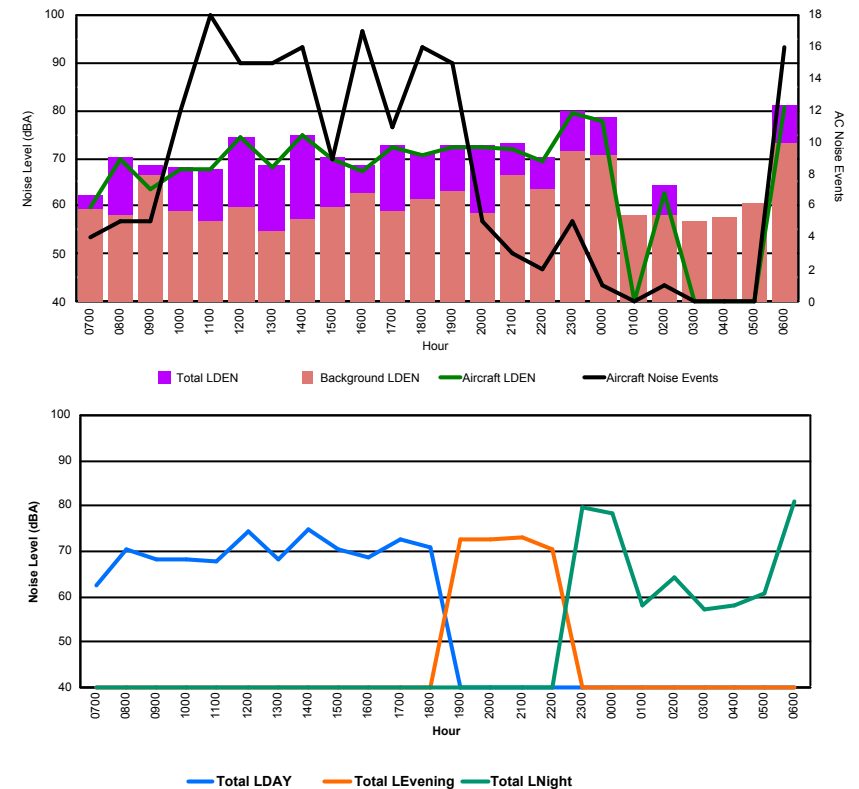


## Luxembourg Airport Noise Distribution by Hour

Between 06/04/2018 00:00:00 and 06/04/2018 23:59:59 (Local Time)

Day	Aircraft Events	Total LDEN dB (A)	Aircraft LDEN dB(A)	Background LDEN dB(A)	Total LDay dB(A)	Total LEvening dB(A)	Total LNight dB (A)
06/04/18 7:00	4	62.4	59.9	59.3	62.4	-	-
06/04/18 8:00	5	70.3	70.0	58.0	70.3	-	-
06/04/18 9:00	5	68.4	63.7	66.6	68.4	-	-
06/04/18 10:00	12	68.2	67.6	59.1	68.2	-	-
06/04/18 11:00	18	67.9	67.6	56.8	67.9	-	-
06/04/18 12:00	15	74.4	74.2	59.8	74.4	-	-
06/04/18 13:00	15	68.4	68.2	54.6	68.4	-	-
06/04/18 14:00	16	74.9	74.8	57.1	74.9	-	-
06/04/18 15:00	9	70.3	70.0	59.6	70.3	-	-
06/04/18 16:00	17	68.5	67.3	62.7	68.5	-	-
06/04/18 17:00	11	72.6	72.4	58.8	72.6	-	-
06/04/18 18:00	16	71.0	70.6	61.4	71.0	-	-
06/04/18 19:00	15	72.7	72.3	63.1	-	72.7	-
06/04/18 20:00	5	72.6	72.4	58.7	-	72.6	-
06/04/18 21:00	3	73.1	72.0	66.4	-	73.1	-
06/04/18 22:00	2	70.4	69.4	63.6	-	70.4	-
06/04/18 23:00	5	79.9	79.3	71.3	-	-	79.9
07/04/18 0:00	1	78.6	77.8	70.6	-	-	78.6
07/04/18 1:00	-	58.3	-	58.3	-	-	58.3
07/04/18 2:00	1	64.2	62.9	58.3	-	-	64.2
07/04/18 3:00	-	57.0	-	57.0	-	-	57.0
07/04/18 4:00	-	57.9	-	57.9	-	-	57.9
07/04/18 5:00	-	60.6	-	60.7	-	-	60.6
07/04/18 6:00	16	81.1	80.5	73.2	-	-	81.1
	<b>191</b>	<b>73.3</b>	<b>72.7</b>	<b>64.8</b>	<b>70.9</b>	<b>72.3</b>	<b>75.8</b>

Location: Mid Runway NMT # 3





## Luxembourg Airport Noise Distribution by Hour

Between 06/04/2018 00:00:00 and 06/04/2018 23:59:59 (Local Time)

Day	Aircraft Events	Total LDEN dB (A)	Aircraft LDEN dB(A)	Background LDEN dB(A)	Total LDay dB(A)	Total LEvening dB(A)	Total LNight dB (A)
06/04/18 7:00	5	65.5	59.8	68.8	65.5	-	-
06/04/18 8:00	2	67.4	63.9	78.4	67.4	-	-
06/04/18 9:00	9	71.1	70.4	64.1	71.1	-	-
06/04/18 10:00	18	66.1	63.2	64.4	66.1	-	-
06/04/18 11:00	22	66.7	64.6	63.6	66.7	-	-
06/04/18 12:00	12	67.1	65.4	62.9	67.1	-	-
06/04/18 13:00	10	64.9	61.2	63.3	64.9	-	-
06/04/18 14:00	18	65.0	61.5	63.0	65.0	-	-
06/04/18 15:00	13	67.4	65.8	62.7	67.4	-	-
06/04/18 16:00	13	69.3	68.4	62.0	69.3	-	-
06/04/18 17:00	12	68.0	66.7	62.3	68.0	-	-
06/04/18 18:00	11	65.6	63.2	62.1	65.6	-	-
06/04/18 19:00	12	72.9	71.8	66.7	-	72.9	-
06/04/18 20:00	3	67.5	62.8	65.8	-	67.5	-
06/04/18 21:00	11	72.8	72.0	65.5	-	72.8	-
06/04/18 22:00	14	71.6	70.6	65.3	-	71.6	-
06/04/18 23:00	2	75.6	74.7	68.4	-	-	75.6
07/04/18 0:00	1	76.0	75.5	68.3	-	-	76.0
07/04/18 1:00	-	65.4	-	66.5	-	-	65.4
07/04/18 2:00	1	64.5	48.0	65.3	-	-	64.5
07/04/18 3:00	-	65.3	-	65.7	-	-	65.3
07/04/18 4:00	-	67.3	-	68.0	-	-	67.3
07/04/18 5:00	-	70.1	-	71.5	-	-	70.1
07/04/18 6:00	6	74.6	72.4	72.4	-	-	74.6
	<b>195</b>	<b>70.3</b>	<b>68.5</b>	<b>68.6</b>	<b>67.4</b>	<b>71.7</b>	<b>72.1</b>

