

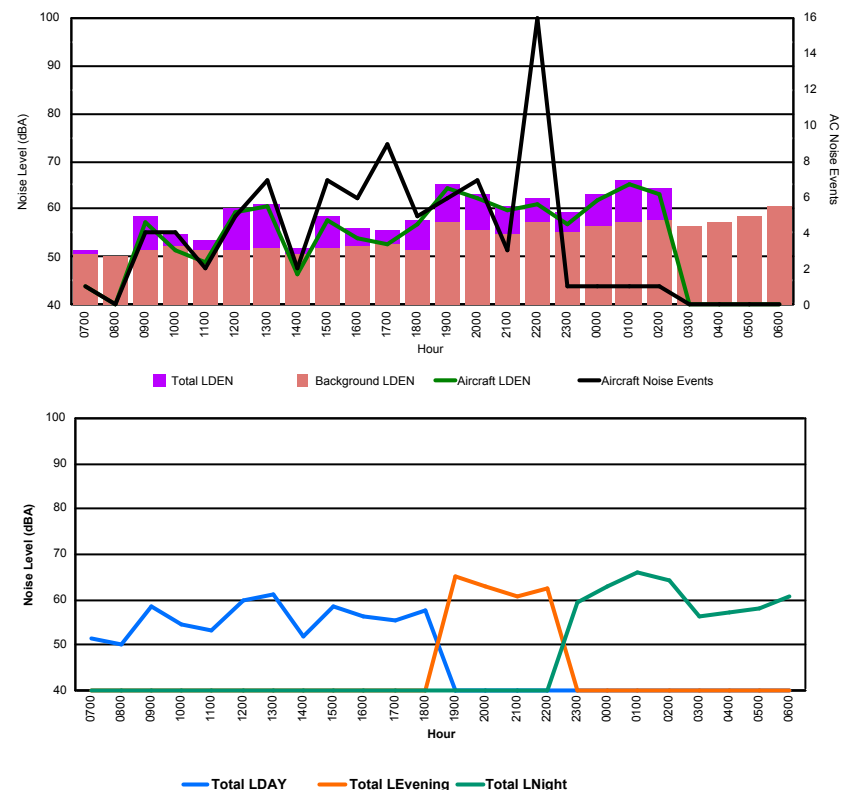


## Luxembourg Airport Noise Distribution by Hour

Between 01/04/2018 00:00:00 and 01/04/2018 23:59:59 (Local Time)

Day	Aircraft Events	Total LDEN dB (A)	Aircraft LDEN dB(A)	Background LDEN dB(A)	Total LDay dB(A)	Total LEvening dB(A)	Total LNight dB (A)
01/04/18 7:00	1	51.3	44.0	50.5	51.3	-	-
01/04/18 8:00	-	50.2	-	50.3	50.2	-	-
01/04/18 9:00	4	58.4	57.4	51.6	58.4	-	-
01/04/18 10:00	4	54.7	51.4	52.2	54.7	-	-
01/04/18 11:00	2	53.4	49.0	51.6	53.4	-	-
01/04/18 12:00	5	60.0	59.4	51.6	60.0	-	-
01/04/18 13:00	7	61.0	60.5	51.9	61.0	-	-
01/04/18 14:00	2	52.0	46.4	50.6	52.0	-	-
01/04/18 15:00	7	58.7	57.8	51.7	58.7	-	-
01/04/18 16:00	6	56.2	54.1	52.1	56.2	-	-
01/04/18 17:00	9	55.6	52.9	52.6	55.6	-	-
01/04/18 18:00	5	57.8	56.7	51.5	57.8	-	-
01/04/18 19:00	6	65.1	64.4	57.1	-	65.1	-
01/04/18 20:00	7	63.0	62.2	55.8	-	63.0	-
01/04/18 21:00	3	60.8	59.6	54.7	-	60.8	-
01/04/18 22:00	16	62.4	61.1	57.2	-	62.4	-
01/04/18 23:00	1	59.2	56.8	55.4	-	-	59.2
02/04/18 0:00	1	63.0	61.9	56.4	-	-	63.0
02/04/18 1:00	1	65.9	65.2	57.3	-	-	65.9
02/04/18 2:00	1	64.2	63.0	57.7	-	-	64.2
02/04/18 3:00	-	56.5	-	56.6	-	-	56.5
02/04/18 4:00	-	57.4	-	57.4	-	-	57.4
02/04/18 5:00	-	58.3	-	58.4	-	-	58.3
02/04/18 6:00	-	60.6	-	60.7	-	-	60.6
	<b>88</b>	<b>60.4</b>	<b>58.8</b>	<b>55.3</b>	<b>57.0</b>	<b>63.1</b>	<b>61.8</b>

Location: Roodt/Syr NMT # 1



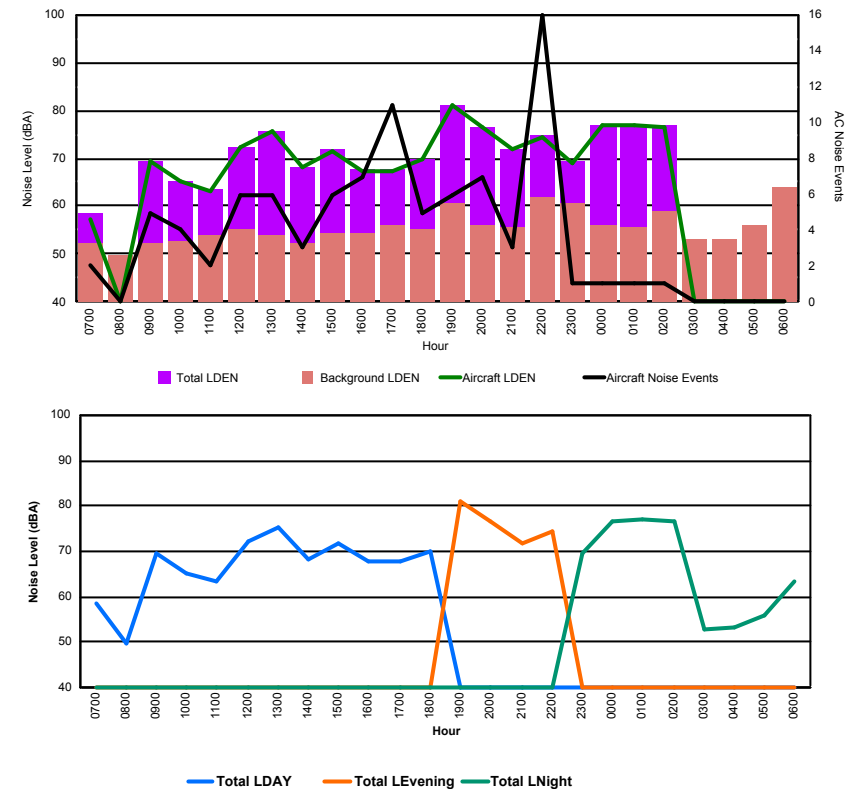


## Luxembourg Airport Noise Distribution by Hour

Between 01/04/2018 00:00:00 and 01/04/2018 23:59:59 (Local Time)

Day	Aircraft Events	Total LDEN dB (A)	Aircraft LDEN dB(A)	Background LDEN dB(A)	Total LDay dB(A)	Total LEvening dB(A)	Total LNight dB (A)
01/04/18 7:00	2	58.4	57.2	52.4	58.4	-	-
01/04/18 8:00	-	49.8	-	49.9	49.8	-	-
01/04/18 9:00	5	69.4	69.3	52.3	69.4	-	-
01/04/18 10:00	4	65.3	65.1	52.8	65.3	-	-
01/04/18 11:00	2	63.6	63.2	53.8	63.6	-	-
01/04/18 12:00	6	72.2	72.2	55.3	72.2	-	-
01/04/18 13:00	6	75.5	75.5	54.0	75.5	-	-
01/04/18 14:00	3	68.3	68.1	52.3	68.3	-	-
01/04/18 15:00	6	71.7	71.6	54.3	71.7	-	-
01/04/18 16:00	7	67.7	67.5	54.5	67.7	-	-
01/04/18 17:00	11	67.8	67.5	55.9	67.8	-	-
01/04/18 18:00	5	69.9	69.7	55.3	69.9	-	-
01/04/18 19:00	6	80.9	80.9	60.8	-	80.9	-
01/04/18 20:00	7	76.5	76.4	55.9	-	76.5	-
01/04/18 21:00	3	71.9	71.8	55.5	-	71.9	-
01/04/18 22:00	16	74.6	74.4	61.7	-	74.6	-
01/04/18 23:00	1	69.5	68.9	60.5	-	-	69.5
02/04/18 0:00	1	76.8	76.7	55.9	-	-	76.8
02/04/18 1:00	1	76.9	76.8	55.8	-	-	76.9
02/04/18 2:00	1	76.8	76.6	58.9	-	-	76.8
02/04/18 3:00	-	53.0	-	53.0	-	-	53.0
02/04/18 4:00	-	53.3	-	53.3	-	-	53.3
02/04/18 5:00	-	56.1	-	56.1	-	-	56.1
02/04/18 6:00	-	63.6	-	63.8	-	-	63.6
	<b>93</b>	<b>73.0</b>	<b>72.9</b>	<b>57.1</b>	<b>69.6</b>	<b>77.2</b>	<b>72.9</b>

Location: DVOR NMT # 2



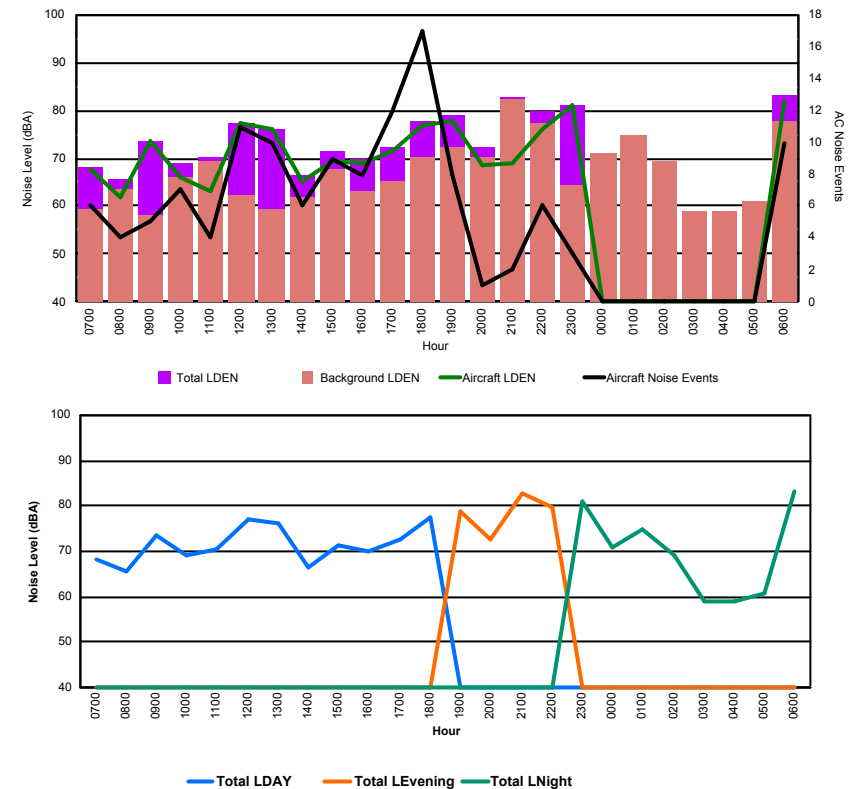


## Luxembourg Airport Noise Distribution by Hour

Between 01/04/2018 00:00:00 and 01/04/2018 23:59:59 (Local Time)

Day	Aircraft Events	Total LDEN dB (A)	Aircraft LDEN dB(A)	Background LDEN dB(A)	Total LDay dB(A)	Total LEvening dB(A)	Total LNight dB (A)
01/04/18 7:00	6	68.3	67.9	59.5	68.3	-	-
01/04/18 8:00	4	65.8	61.8	63.6	65.8	-	-
01/04/18 9:00	5	73.7	73.6	58.0	73.7	-	-
01/04/18 10:00	7	69.1	66.2	66.1	69.1	-	-
01/04/18 11:00	4	70.3	63.3	69.3	70.3	-	-
01/04/18 12:00	11	77.2	77.1	62.1	77.2	-	-
01/04/18 13:00	10	76.2	76.1	59.4	76.2	-	-
01/04/18 14:00	6	66.6	65.0	61.7	66.6	-	-
01/04/18 15:00	9	71.5	69.4	67.6	71.5	-	-
01/04/18 16:00	8	69.9	69.0	63.0	69.9	-	-
01/04/18 17:00	12	72.5	71.6	65.3	72.5	-	-
01/04/18 18:00	17	77.7	76.9	70.2	77.7	-	-
01/04/18 19:00	8	78.9	77.8	72.4	-	78.9	-
01/04/18 20:00	1	72.5	68.6	70.4	-	72.5	-
01/04/18 21:00	2	82.6	68.9	82.4	-	82.6	-
01/04/18 22:00	6	79.7	76.1	77.2	-	79.7	-
01/04/18 23:00	3	81.2	81.2	64.5	-	-	81.2
02/04/18 0:00	-	71.1	-	71.1	-	-	71.1
02/04/18 1:00	-	74.7	-	74.7	-	-	74.7
02/04/18 2:00	-	69.3	-	69.3	-	-	69.3
02/04/18 3:00	-	58.9	-	59.0	-	-	58.9
02/04/18 4:00	-	58.9	-	58.9	-	-	58.9
02/04/18 5:00	-	60.8	-	60.9	-	-	60.8
02/04/18 6:00	10	83.1	81.7	77.6	-	-	83.1
	<b>129</b>	<b>76.3</b>	<b>74.0</b>	<b>72.3</b>	<b>73.2</b>	<b>79.7</b>	<b>76.9</b>

Location: Mid Runway NMT # 3





## Luxembourg Airport Noise Distribution by Hour

Between 01/04/2018 00:00:00 and 01/04/2018 23:59:59 (Local Time)

Day	Aircraft Events	Total LDEN dB (A)	Aircraft LDEN dB(A)	Background LDEN dB(A)	Total LDay dB(A)	Total LEvening dB(A)	Total LNight dB (A)
01/04/18 7:00	4	66.5	66.3	53.0	66.5	-	-
01/04/18 8:00	4	58.2	55.6	54.7	58.2	-	-
01/04/18 9:00	1	65.5	64.9	56.0	65.5	-	-
01/04/18 10:00	5	61.8	60.3	56.4	61.8	-	-
01/04/18 11:00	4	63.3	61.6	58.5	63.3	-	-
01/04/18 12:00	5	60.4	56.2	58.5	60.4	-	-
01/04/18 13:00	5	65.3	64.7	56.5	65.3	-	-
01/04/18 14:00	4	57.5	51.2	56.4	57.5	-	-
01/04/18 15:00	3	65.9	65.3	56.9	65.9	-	-
01/04/18 16:00	5	64.7	63.9	57.0	64.7	-	-
01/04/18 17:00	12	67.4	67.0	57.4	67.4	-	-
01/04/18 18:00	9	66.3	65.7	57.4	66.3	-	-
01/04/18 19:00	8	75.5	75.3	61.7	-	75.5	-
01/04/18 20:00	1	63.0	58.5	61.1	-	63.0	-
01/04/18 21:00	4	66.7	65.4	61.1	-	66.7	-
01/04/18 22:00	5	77.4	77.3	61.8	-	77.4	-
01/04/18 23:00	3	79.5	79.4	65.8	-	-	79.5
02/04/18 0:00	-	65.1	-	66.0	-	-	65.1
02/04/18 1:00	-	63.4	-	64.1	-	-	63.4
02/04/18 2:00	-	62.5	-	63.1	-	-	62.5
02/04/18 3:00	-	62.5	-	62.5	-	-	62.5
02/04/18 4:00	-	63.2	-	63.3	-	-	63.2
02/04/18 5:00	-	65.9	-	66.1	-	-	65.9
02/04/18 6:00	14	78.2	77.9	66.3	-	-	78.2
	<b>96</b>	<b>71.0</b>	<b>70.5</b>	<b>61.8</b>	<b>64.5</b>	<b>73.9</b>	<b>73.3</b>

Location: NDB-Hamm NMT # 4

