

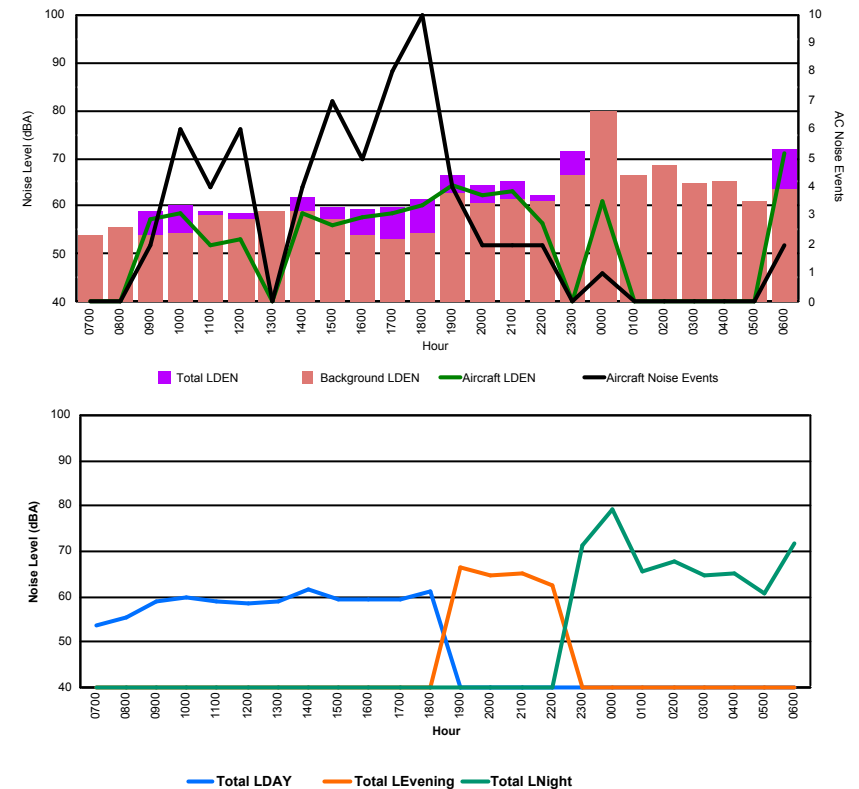


## Luxembourg Airport Noise Distribution by Hour

Between 31/12/2017 00:00:00 and 31/12/2017 23:59:59 (Local Time)

Day	Aircraft Events	Total LDEN dB (A)	Aircraft LDEN dB(A)	Background LDEN dB(A)	Total LDay dB(A)	Total LEvening dB(A)	Total LNight dB (A)
31/12/17 7:00	-	53.8	-	54.0	53.8	-	-
31/12/17 8:00	-	55.4	-	55.7	55.4	-	-
31/12/17 9:00	2	58.8	57.1	54.0	58.8	-	-
31/12/17 10:00	6	60.0	58.6	54.4	60.0	-	-
31/12/17 11:00	4	58.9	52.0	58.1	58.9	-	-
31/12/17 12:00	6	58.5	53.0	57.2	58.5	-	-
31/12/17 13:00	-	58.8	-	58.8	58.8	-	-
31/12/17 14:00	4	61.7	58.4	59.1	61.7	-	-
31/12/17 15:00	7	59.6	56.0	57.3	59.6	-	-
31/12/17 16:00	5	59.2	57.7	54.1	59.2	-	-
31/12/17 17:00	8	59.6	58.5	53.2	59.6	-	-
31/12/17 18:00	10	61.3	60.4	54.5	61.3	-	-
31/12/17 19:00	4	66.5	64.3	62.9	-	66.5	-
31/12/17 20:00	2	64.5	62.4	60.5	-	64.5	-
31/12/17 21:00	2	65.3	63.1	61.3	-	65.3	-
31/12/17 22:00	2	62.3	56.6	61.0	-	62.3	-
31/12/17 23:00	-	71.4	-	66.4	-	-	71.4
01/01/18 0:00	1	79.3	61.1	79.8	-	-	79.3
01/01/18 1:00	-	65.8	-	66.3	-	-	65.8
01/01/18 2:00	-	67.9	-	68.5	-	-	67.9
01/01/18 3:00	-	64.7	-	64.8	-	-	64.7
01/01/18 4:00	-	65.0	-	65.2	-	-	65.0
01/01/18 5:00	-	60.9	-	61.0	-	-	60.9
01/01/18 6:00	2	71.8	71.2	63.5	-	-	71.8
	<b>65</b>	<b>68.1</b>	<b>60.4</b>	<b>67.4</b>	<b>59.2</b>	<b>64.9</b>	<b>72.2</b>

Location: Roodt/Syr NMT # 1



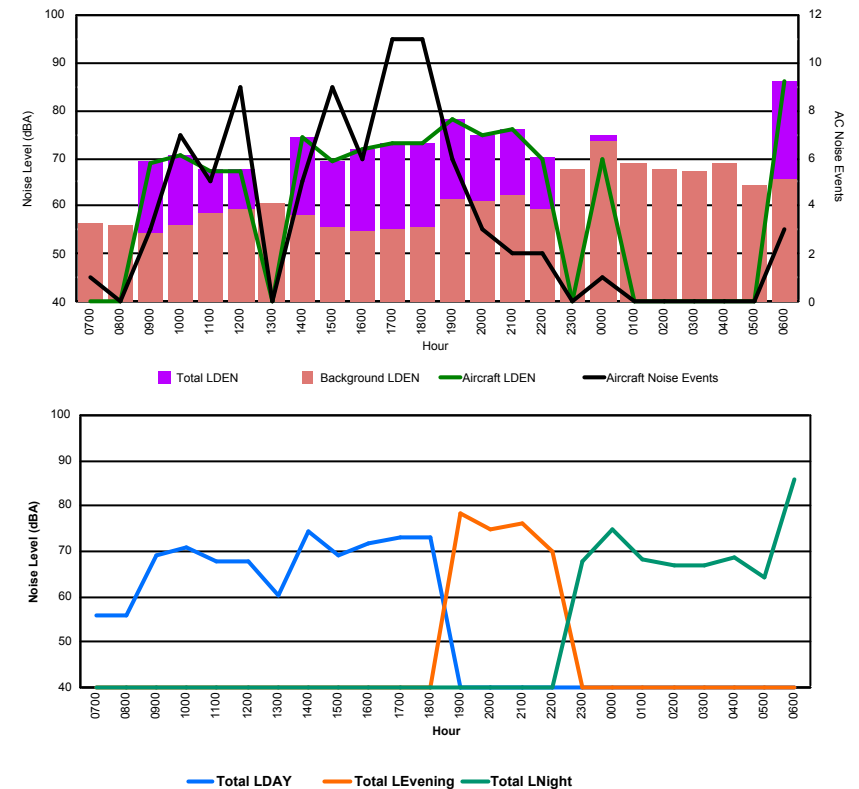


## Luxembourg Airport Noise Distribution by Hour

Between 31/12/2017 00:00:00 and 31/12/2017 23:59:59 (Local Time)

Day	Aircraft Events	Total LDEN dB (A)	Aircraft LDEN dB(A)	Background LDEN dB(A)	Total LDay dB(A)	Total LEvening dB(A)	Total LNight dB (A)
31/12/17 7:00	1	56.1	37.2	56.3	56.1	-	-
31/12/17 8:00	-	56.0	-	56.2	56.0	-	-
31/12/17 9:00	3	69.3	69.1	54.5	69.3	-	-
31/12/17 10:00	7	70.7	70.6	55.9	70.7	-	-
31/12/17 11:00	5	67.6	67.1	58.6	67.6	-	-
31/12/17 12:00	9	67.8	67.2	59.3	67.8	-	-
31/12/17 13:00	-	60.3	-	60.5	60.3	-	-
31/12/17 14:00	5	74.5	74.3	58.0	74.5	-	-
31/12/17 15:00	9	69.3	69.2	55.7	69.3	-	-
31/12/17 16:00	6	71.9	71.8	54.6	71.9	-	-
31/12/17 17:00	11	73.1	73.1	55.4	73.1	-	-
31/12/17 18:00	11	73.3	73.2	55.7	73.3	-	-
31/12/17 19:00	6	78.2	78.1	61.5	-	78.2	-
31/12/17 20:00	3	74.9	74.7	61.1	-	74.9	-
31/12/17 21:00	2	76.1	75.9	62.4	-	76.1	-
31/12/17 22:00	2	70.1	69.7	59.2	-	70.1	-
31/12/17 23:00	-	67.7	-	67.8	-	-	67.7
01/01/18 0:00	1	74.8	70.0	73.6	-	-	74.8
01/01/18 1:00	-	68.4	-	69.1	-	-	68.4
01/01/18 2:00	-	67.0	-	67.6	-	-	67.0
01/01/18 3:00	-	66.9	-	67.2	-	-	66.9
01/01/18 4:00	-	68.5	-	68.8	-	-	68.5
01/01/18 5:00	-	64.1	-	64.2	-	-	64.1
01/01/18 6:00	3	86.1	86.1	65.7	-	-	86.1
	<b>84</b>	<b>74.9</b>	<b>74.5</b>	<b>64.9</b>	<b>70.3</b>	<b>75.7</b>	<b>77.7</b>

Location: DVOR NMT # 2

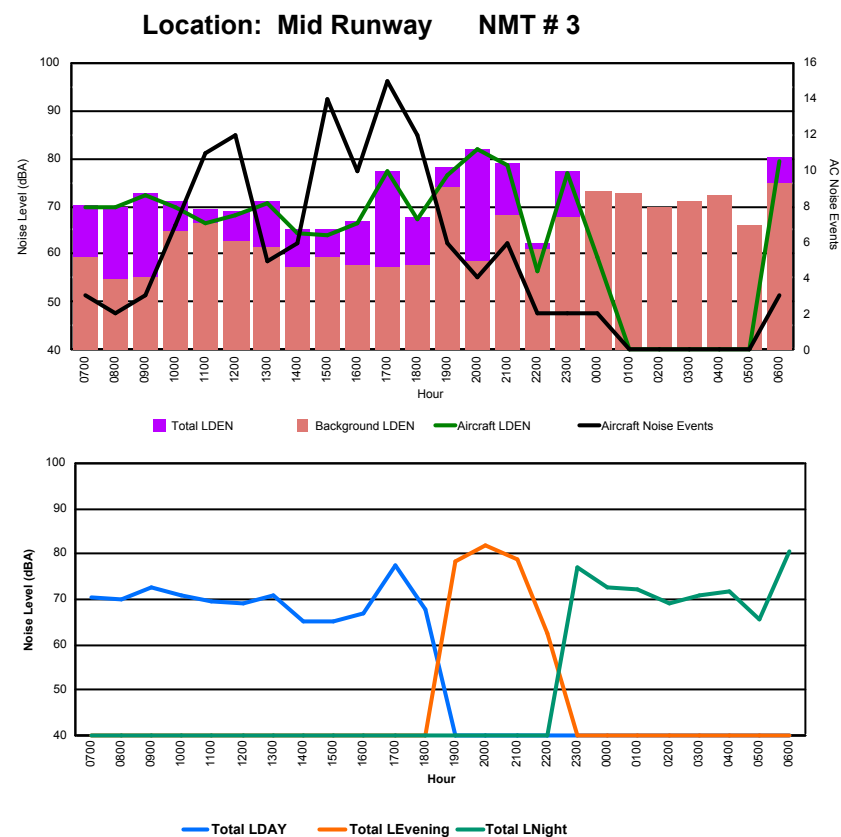




## Luxembourg Airport Noise Distribution by Hour

Between 31/12/2017 00:00:00 and 31/12/2017 23:59:59 (Local Time)

Day	Aircraft Events	Total LDEN dB (A)	Aircraft LDEN dB(A)	Background LDEN dB(A)	Total LDay dB(A)	Total LEvening dB(A)	Total LNight dB (A)
31/12/17 7:00	3	70.3	70.0	59.2	70.3	-	-
31/12/17 8:00	2	69.8	69.6	54.6	69.8	-	-
31/12/17 9:00	3	72.6	72.5	55.4	72.6	-	-
31/12/17 10:00	7	71.0	69.8	64.8	71.0	-	-
31/12/17 11:00	11	69.5	66.5	66.6	69.5	-	-
31/12/17 12:00	12	69.0	68.0	62.6	69.0	-	-
31/12/17 13:00	5	71.1	70.6	61.5	71.1	-	-
31/12/17 14:00	6	65.1	64.4	57.1	65.1	-	-
31/12/17 15:00	14	65.3	64.1	59.2	65.3	-	-
31/12/17 16:00	10	67.0	66.5	57.5	67.0	-	-
31/12/17 17:00	15	77.3	77.3	57.1	77.3	-	-
31/12/17 18:00	12	67.9	67.5	57.5	67.9	-	-
31/12/17 19:00	6	78.3	76.3	73.9	-	78.3	-
31/12/17 20:00	4	82.0	81.9	58.6	-	82.0	-
31/12/17 21:00	6	79.0	78.7	68.3	-	79.0	-
31/12/17 22:00	2	62.4	56.6	61.2	-	62.4	-
31/12/17 23:00	2	77.2	76.8	67.6	-	-	77.2
01/01/18 0:00	2	72.5	59.2	73.0	-	-	72.5
01/01/18 1:00	-	72.2	-	72.8	-	-	72.2
01/01/18 2:00	-	69.3	-	69.8	-	-	69.3
01/01/18 3:00	-	70.7	-	71.2	-	-	70.7
01/01/18 4:00	-	71.8	-	72.1	-	-	71.8
01/01/18 5:00	-	65.7	-	66.0	-	-	65.7
01/01/18 6:00	3	80.4	79.2	74.6	-	-	80.4
	<b>125</b>	<b>74.6</b>	<b>73.5</b>	<b>68.4</b>	<b>71.0</b>	<b>78.9</b>	<b>74.7</b>





## Luxembourg Airport Noise Distribution by Hour

Between 31/12/2017 00:00:00 and 31/12/2017 23:59:59 (Local Time)

Day	Aircraft Events	Total LDEN dB (A)	Aircraft LDEN dB(A)	Background LDEN dB(A)	Total LDay dB(A)	Total LEvening dB(A)	Total LNight dB (A)
31/12/17 7:00	3	67.2	66.6	59.5	67.2	-	-
31/12/17 8:00	3	69.8	69.5	59.2	69.8	-	-
31/12/17 9:00	2	59.6	45.4	59.4	59.6	-	-
31/12/17 10:00	5	62.5	57.9	60.9	62.5	-	-
31/12/17 11:00	5	63.6	59.4	62.0	63.6	-	-
31/12/17 12:00	6	62.2	55.7	61.5	62.2	-	-
31/12/17 13:00	7	70.4	69.7	62.1	70.4	-	-
31/12/17 14:00	2	61.5	47.8	61.5	61.5	-	-
31/12/17 15:00	8	61.6	52.7	61.3	61.6	-	-
31/12/17 16:00	4	61.3	56.6	59.6	61.3	-	-
31/12/17 17:00	4	63.2	61.0	59.4	63.2	-	-
31/12/17 18:00	3	65.4	63.9	60.2	65.4	-	-
31/12/17 19:00	5	73.2	72.4	65.0	-	73.2	-
31/12/17 20:00	3	72.1	71.4	63.9	-	72.1	-
31/12/17 21:00	4	73.2	72.6	64.4	-	73.2	-
31/12/17 22:00	-	63.8	-	64.0	-	63.8	-
31/12/17 23:00	2	76.7	75.7	69.7	-	-	76.7
01/01/18 0:00	-	76.5	-	77.8	-	-	76.5
01/01/18 1:00	-	69.9	-	72.5	-	-	69.9
01/01/18 2:00	-	70.8	-	73.7	-	-	70.8
01/01/18 3:00	-	70.1	-	71.1	-	-	70.1
01/01/18 4:00	-	70.4	-	70.8	-	-	70.4
01/01/18 5:00	-	65.5	-	65.6	-	-	65.5
01/01/18 6:00	4	73.7	73.0	65.9	-	-	73.7
	<b>70</b>	<b>70.4</b>	<b>67.5</b>	<b>68.5</b>	<b>65.5</b>	<b>71.8</b>	<b>73.0</b>

Location: NDB-Hamm NMT # 4

