

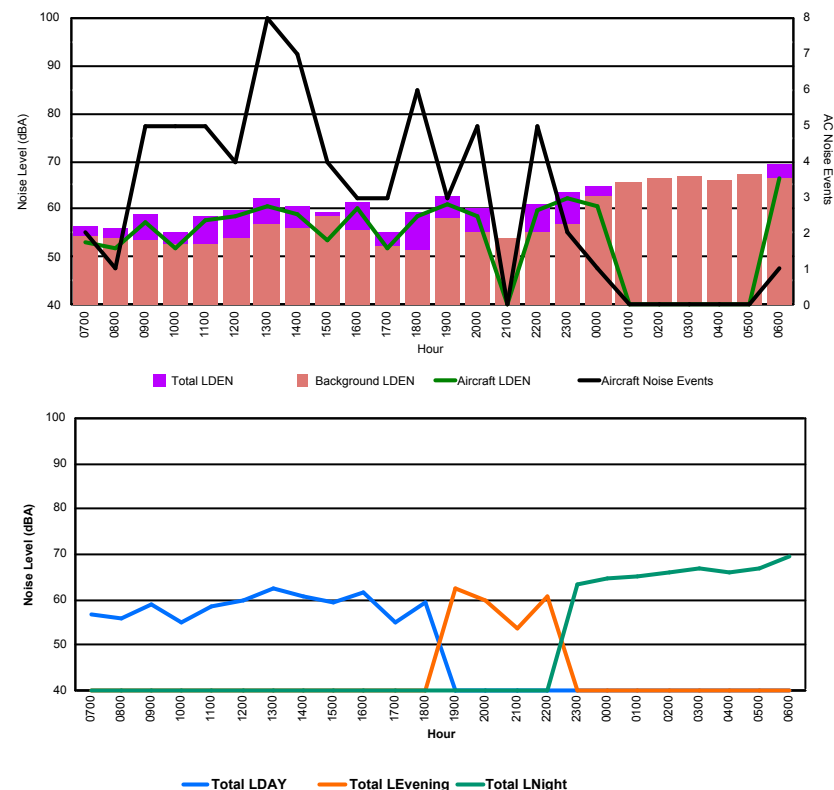


## Luxembourg Airport Noise Distribution by Hour

Between 30/12/2017 00:00:00 and 30/12/2017 23:59:59 (Local Time)

Day	Aircraft Events	Total LDEN dB (A)	Aircraft LDEN dB(A)	Background LDEN dB(A)	Total LDay dB(A)	Total LEvening dB(A)	Total LNight dB (A)
30/12/17 7:00	2	56.6	53.0	54.5	56.6	-	-
30/12/17 8:00	1	56.0	51.9	54.1	56.0	-	-
30/12/17 9:00	5	58.9	57.4	53.7	58.9	-	-
30/12/17 10:00	5	55.2	51.9	52.6	55.2	-	-
30/12/17 11:00	5	58.7	57.5	52.8	58.7	-	-
30/12/17 12:00	4	59.8	58.6	53.9	59.8	-	-
30/12/17 13:00	8	62.3	60.8	57.0	62.3	-	-
30/12/17 14:00	7	60.8	59.1	56.1	60.8	-	-
30/12/17 15:00	4	59.5	53.6	58.4	59.5	-	-
30/12/17 16:00	3	61.5	60.3	55.6	61.5	-	-
30/12/17 17:00	3	55.0	51.8	52.2	55.0	-	-
30/12/17 18:00	6	59.2	58.4	51.6	59.2	-	-
30/12/17 19:00	3	62.6	60.9	58.0	-	62.6	-
30/12/17 20:00	5	60.0	58.4	55.0	-	60.0	-
30/12/17 21:00	-	53.8	-	53.8	-	53.8	-
30/12/17 22:00	5	60.9	59.7	55.2	-	60.9	-
30/12/17 23:00	2	63.4	62.3	57.0	-	-	63.4
31/12/17 0:00	1	64.7	60.8	62.7	-	-	64.7
31/12/17 1:00	-	65.2	-	65.7	-	-	65.2
31/12/17 2:00	-	66.0	-	66.5	-	-	66.0
31/12/17 3:00	-	66.7	-	67.0	-	-	66.7
31/12/17 4:00	-	66.0	-	66.2	-	-	66.0
31/12/17 5:00	-	67.0	-	67.4	-	-	67.0
31/12/17 6:00	1	69.4	66.6	66.6	-	-	69.4
	<b>70</b>	<b>63.1</b>	<b>58.5</b>	<b>61.6</b>	<b>59.2</b>	<b>60.3</b>	<b>66.4</b>

Location: Roodt/Syr NMT # 1



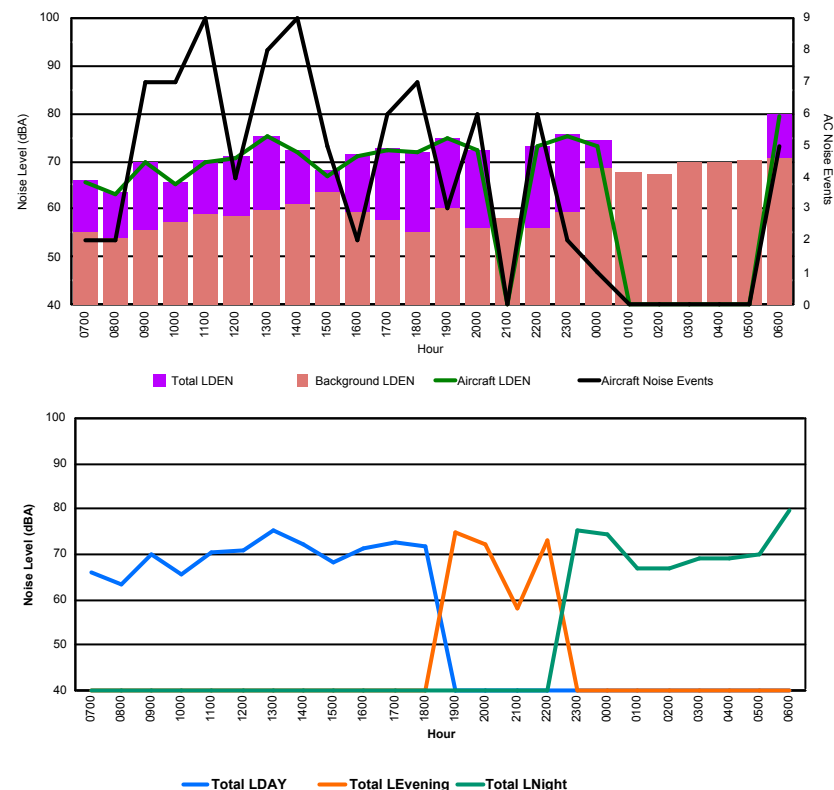


## Luxembourg Airport Noise Distribution by Hour

Between 30/12/2017 00:00:00 and 30/12/2017 23:59:59 (Local Time)

Day	Aircraft Events	Total LDEN dB (A)	Aircraft LDEN dB(A)	Background LDEN dB(A)	Total LDay dB(A)	Total LEvening dB(A)	Total LNight dB (A)
30/12/17 7:00	2	66.0	65.7	55.2	66.0	-	-
30/12/17 8:00	2	63.6	63.2	53.8	63.6	-	-
30/12/17 9:00	7	70.0	69.8	55.5	70.0	-	-
30/12/17 10:00	7	65.7	65.1	57.3	65.7	-	-
30/12/17 11:00	9	70.3	70.0	58.8	70.3	-	-
30/12/17 12:00	4	71.0	70.8	58.5	71.0	-	-
30/12/17 13:00	8	75.3	75.2	59.9	75.3	-	-
30/12/17 14:00	9	72.1	71.8	61.0	72.1	-	-
30/12/17 15:00	5	68.3	66.7	63.6	68.3	-	-
30/12/17 16:00	2	71.4	71.2	59.2	71.4	-	-
30/12/17 17:00	6	72.7	72.5	57.5	72.7	-	-
30/12/17 18:00	7	71.8	71.8	55.2	71.8	-	-
30/12/17 19:00	3	74.7	74.6	60.1	-	74.7	-
30/12/17 20:00	6	72.4	72.2	56.1	-	72.4	-
30/12/17 21:00	-	58.3	-	58.3	-	58.3	-
30/12/17 22:00	6	73.2	73.1	56.2	-	73.2	-
30/12/17 23:00	2	75.5	75.4	59.4	-	-	75.5
31/12/17 0:00	1	74.4	73.2	68.5	-	-	74.4
31/12/17 1:00	-	66.9	-	67.6	-	-	66.9
31/12/17 2:00	-	66.9	-	67.4	-	-	66.9
31/12/17 3:00	-	69.3	-	69.8	-	-	69.3
31/12/17 4:00	-	69.1	-	69.6	-	-	69.1
31/12/17 5:00	-	69.9	-	70.3	-	-	69.9
31/12/17 6:00	5	79.8	79.3	70.5	-	-	79.8
	<b>91</b>	<b>72.3</b>	<b>71.6</b>	<b>64.7</b>	<b>70.9</b>	<b>72.3</b>	<b>73.9</b>

Location: DVOR NMT # 2

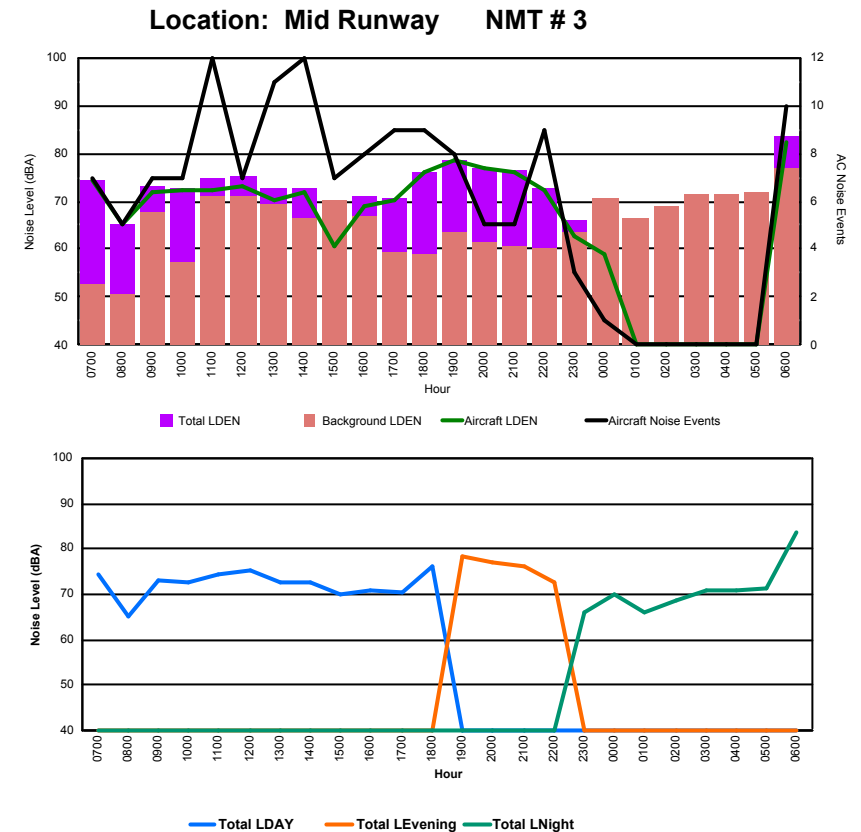




## Luxembourg Airport Noise Distribution by Hour

Between 30/12/2017 00:00:00 and 30/12/2017 23:59:59 (Local Time)

Day	Aircraft Events	Total LDEN dB (A)	Aircraft LDEN dB(A)	Background LDEN dB(A)	Total LDay dB(A)	Total LEvening dB(A)	Total LNight dB (A)
30/12/17 7:00	7	74.4	74.3	52.8	74.4	-	-
30/12/17 8:00	5	65.2	65.0	50.7	65.2	-	-
30/12/17 9:00	7	73.2	71.7	67.8	73.2	-	-
30/12/17 10:00	7	72.6	72.5	57.1	72.6	-	-
30/12/17 11:00	12	74.6	72.1	71.0	74.6	-	-
30/12/17 12:00	7	75.3	73.3	71.2	75.3	-	-
30/12/17 13:00	11	72.7	70.3	69.5	72.7	-	-
30/12/17 14:00	12	72.6	71.8	66.3	72.6	-	-
30/12/17 15:00	7	70.2	60.5	70.3	70.2	-	-
30/12/17 16:00	8	70.9	68.9	66.9	70.9	-	-
30/12/17 17:00	9	70.6	70.2	59.2	70.6	-	-
30/12/17 18:00	9	76.0	75.9	58.8	76.0	-	-
30/12/17 19:00	8	78.5	78.4	63.5	-	78.5	-
30/12/17 20:00	5	77.0	76.9	61.5	-	77.0	-
30/12/17 21:00	5	76.3	76.2	60.8	-	76.3	-
30/12/17 22:00	9	72.7	72.5	60.3	-	72.7	-
30/12/17 23:00	3	66.0	62.6	63.5	-	-	66.0
31/12/17 0:00	1	70.2	59.1	70.5	-	-	70.2
31/12/17 1:00	-	66.2	-	66.6	-	-	66.2
31/12/17 2:00	-	68.5	-	69.0	-	-	68.5
31/12/17 3:00	-	70.9	-	71.5	-	-	70.9
31/12/17 4:00	-	70.8	-	71.5	-	-	70.8
31/12/17 5:00	-	71.3	-	71.8	-	-	71.3
31/12/17 6:00	10	83.5	82.5	76.8	-	-	83.5
	<b>142</b>	<b>74.7</b>	<b>73.5</b>	<b>68.9</b>	<b>73.1</b>	<b>76.6</b>	<b>75.6</b>





## Luxembourg Airport Noise Distribution by Hour

Between 30/12/2017 00:00:00 and 30/12/2017 23:59:59 (Local Time)

Day	Aircraft Events	Total LDEN dB (A)	Aircraft LDEN dB(A)	Background LDEN dB(A)	Total LDay dB(A)	Total LEvening dB(A)	Total LNight dB (A)
30/12/17 7:00	5	67.8	67.3	59.0	67.8	-	-
30/12/17 8:00	4	60.8	56.5	60.6	60.8	-	-
30/12/17 9:00	4	63.9	61.5	60.4	63.9	-	-
30/12/17 10:00	3	68.2	67.4	60.6	68.2	-	-
30/12/17 11:00	8	69.9	69.4	60.6	69.9	-	-
30/12/17 12:00	4	66.5	65.2	60.6	66.5	-	-
30/12/17 13:00	5	65.9	64.4	61.2	65.9	-	-
30/12/17 14:00	8	67.6	66.3	62.0	67.6	-	-
30/12/17 15:00	3	63.7	58.8	62.3	63.7	-	-
30/12/17 16:00	5	66.8	65.7	60.3	66.8	-	-
30/12/17 17:00	4	66.7	65.8	59.2	66.7	-	-
30/12/17 18:00	3	70.0	69.7	58.8	70.0	-	-
30/12/17 19:00	5	72.1	71.5	63.4	-	72.1	-
30/12/17 20:00	-	61.0	-	61.0	-	61.0	-
30/12/17 21:00	4	69.6	68.9	60.8	-	69.6	-
30/12/17 22:00	1	66.2	65.0	60.2	-	66.2	-
30/12/17 23:00	-	65.0	-	65.0	-	-	65.0
31/12/17 0:00	-	68.2	-	69.7	-	-	68.2
31/12/17 1:00	-	68.8	-	70.3	-	-	68.8
31/12/17 2:00	-	69.0	-	70.1	-	-	69.0
31/12/17 3:00	-	69.3	-	70.1	-	-	69.3
31/12/17 4:00	-	70.7	-	71.6	-	-	70.7
31/12/17 5:00	-	69.5	-	70.6	-	-	69.5
31/12/17 6:00	10	78.6	78.1	71.0	-	-	78.6
	<b>76</b>	<b>69.6</b>	<b>67.6</b>	<b>66.3</b>	<b>67.1</b>	<b>68.9</b>	<b>72.0</b>

Location: NDB-Hamm NMT # 4

