

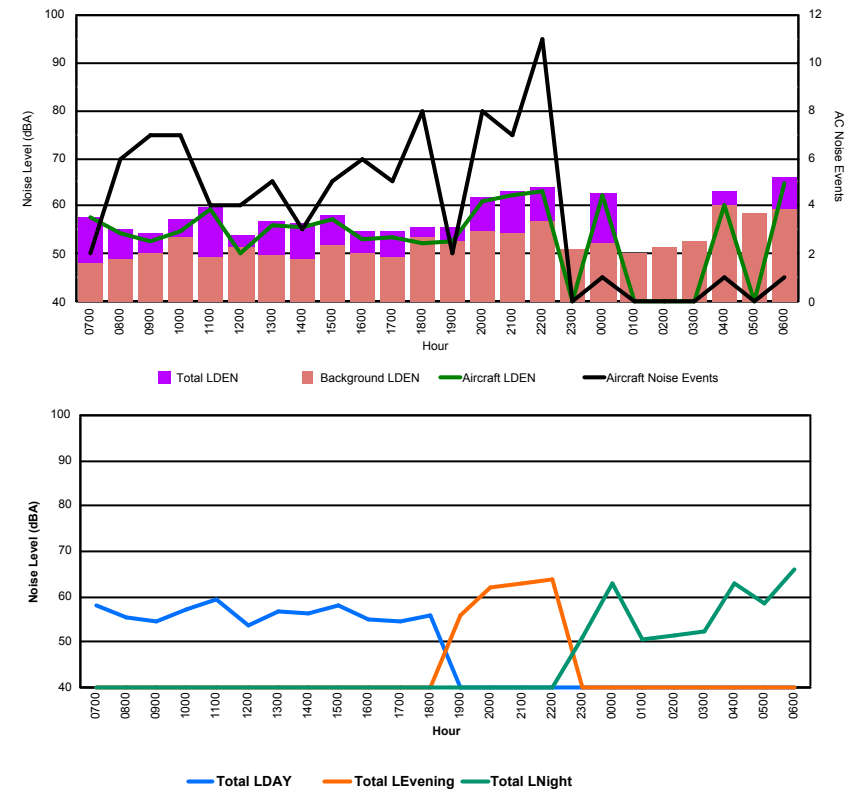


## Luxembourg Airport Noise Distribution by Hour

Between 08/11/2017 00:00:00 and 08/11/2017 23:59:59 (Local Time)

Day	Aircraft Events	Total LDEN dB (A)	Aircraft LDEN dB(A)	Background LDEN dB(A)	Total LDay dB(A)	Total LEvening dB(A)	Total LNight dB (A)
08/11/17 7:00	2	57.9	57.5	48.3	57.9	-	-
08/11/17 8:00	6	55.4	54.4	48.9	55.4	-	-
08/11/17 9:00	7	54.5	52.7	50.2	54.5	-	-
08/11/17 10:00	7	57.2	54.9	53.5	57.2	-	-
08/11/17 11:00	4	59.6	59.2	49.2	59.6	-	-
08/11/17 12:00	4	53.8	50.0	51.6	53.8	-	-
08/11/17 13:00	5	56.8	55.9	49.7	56.8	-	-
08/11/17 14:00	3	56.5	55.7	49.0	56.5	-	-
08/11/17 15:00	5	58.2	57.2	51.8	58.2	-	-
08/11/17 16:00	6	54.8	53.1	50.3	54.8	-	-
08/11/17 17:00	5	54.7	53.4	49.2	54.7	-	-
08/11/17 18:00	8	55.8	52.2	53.4	55.8	-	-
08/11/17 19:00	2	55.7	52.9	52.6	-	55.7	-
08/11/17 20:00	8	62.0	61.2	54.8	-	62.0	-
08/11/17 21:00	7	63.0	62.4	54.5	-	63.0	-
08/11/17 22:00	11	64.0	63.2	56.7	-	64.0	-
08/11/17 23:00	-	51.2	-	51.2	-	-	51.2
09/11/17 0:00	1	62.8	62.3	52.4	-	-	62.8
09/11/17 1:00	-	50.4	-	50.4	-	-	50.4
09/11/17 2:00	-	51.4	-	51.4	-	-	51.4
09/11/17 3:00	-	52.5	-	52.5	-	-	52.5
09/11/17 4:00	1	63.1	60.2	60.0	-	-	63.1
09/11/17 5:00	-	58.7	-	58.7	-	-	58.7
09/11/17 6:00	1	65.9	64.7	59.4	-	-	65.9
	<b>93</b>	<b>59.4</b>	<b>58.0</b>	<b>54.0</b>	<b>56.6</b>	<b>62.1</b>	<b>60.6</b>

Location: Roodt/Syr NMT # 1



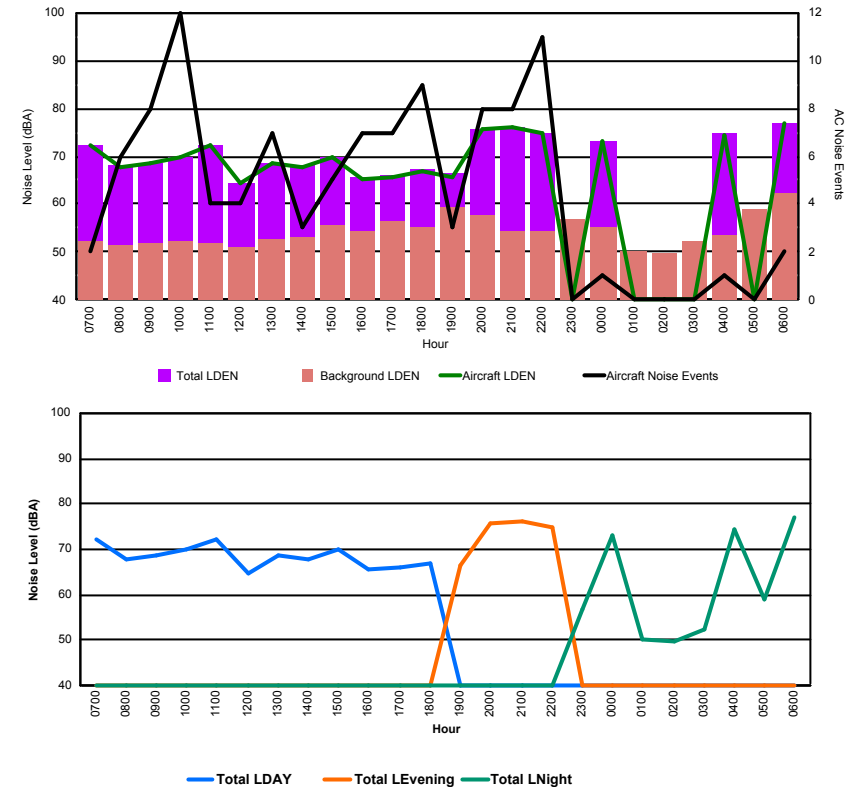


## Luxembourg Airport Noise Distribution by Hour

Between 08/11/2017 00:00:00 and 08/11/2017 23:59:59 (Local Time)

Day	Aircraft Events	Total LDEN dB (A)	Aircraft LDEN dB(A)	Background LDEN dB(A)	Total LDay dB(A)	Total LEvening dB(A)	Total LNight dB (A)
08/11/17 7:00	2	72.3	72.3	52.4	72.3	-	-
08/11/17 8:00	6	68.0	67.9	51.3	68.0	-	-
08/11/17 9:00	8	68.6	68.5	51.8	68.6	-	-
08/11/17 10:00	12	69.8	69.7	52.1	69.8	-	-
08/11/17 11:00	4	72.4	72.3	51.8	72.4	-	-
08/11/17 12:00	4	64.5	64.3	51.2	64.5	-	-
08/11/17 13:00	7	68.6	68.5	52.7	68.6	-	-
08/11/17 14:00	3	68.0	67.9	53.2	68.0	-	-
08/11/17 15:00	5	70.0	69.9	55.5	70.0	-	-
08/11/17 16:00	7	65.7	65.4	54.4	65.7	-	-
08/11/17 17:00	7	66.1	65.6	56.5	66.1	-	-
08/11/17 18:00	9	67.1	66.8	55.3	67.1	-	-
08/11/17 19:00	3	66.5	65.6	59.3	-	66.5	-
08/11/17 20:00	8	75.7	75.6	57.5	-	75.7	-
08/11/17 21:00	8	76.2	76.2	54.3	-	76.2	-
08/11/17 22:00	11	74.9	74.8	54.3	-	74.9	-
08/11/17 23:00	-	56.8	-	56.8	-	-	56.8
09/11/17 0:00	1	73.2	73.1	55.3	-	-	73.2
09/11/17 1:00	-	50.2	-	50.2	-	-	50.2
09/11/17 2:00	-	49.7	-	49.7	-	-	49.7
09/11/17 3:00	-	52.4	-	52.4	-	-	52.4
09/11/17 4:00	1	74.6	74.5	53.5	-	-	74.6
09/11/17 5:00	-	59.1	-	59.1	-	-	59.1
09/11/17 6:00	2	77.0	76.8	62.1	-	-	77.0
	<b>108</b>	<b>71.1</b>	<b>71.0</b>	<b>55.5</b>	<b>69.1</b>	<b>74.6</b>	<b>71.0</b>

Location: DVOR NMT # 2



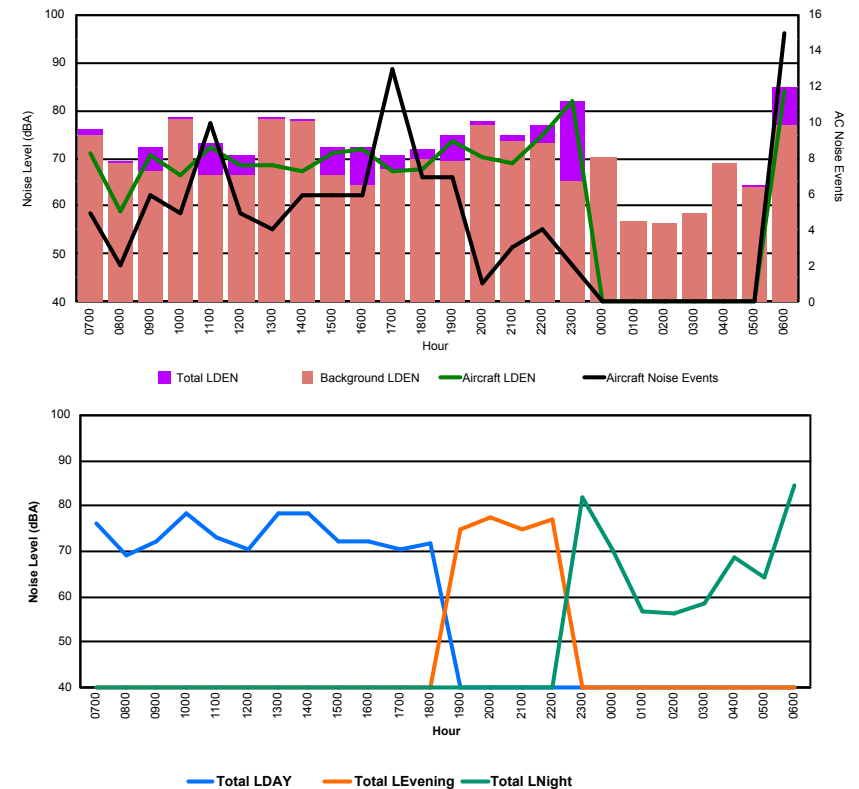


## Luxembourg Airport Noise Distribution by Hour

Between 08/11/2017 00:00:00 and 08/11/2017 23:59:59 (Local Time)

Day	Aircraft Events	Total LDEN dB (A)	Aircraft LDEN dB(A)	Background LDEN dB(A)	Total LDay dB(A)	Total LEvening dB(A)	Total LNight dB (A)
08/11/17 7:00	5	76.1	71.0	74.6	76.1	-	-
08/11/17 8:00	2	69.3	58.9	68.8	69.3	-	-
08/11/17 9:00	6	72.1	70.6	67.1	72.1	-	-
08/11/17 10:00	5	78.4	66.5	78.1	78.4	-	-
08/11/17 11:00	10	73.3	72.4	66.5	73.3	-	-
08/11/17 12:00	5	70.6	68.4	66.6	70.6	-	-
08/11/17 13:00	4	78.4	68.7	78.0	78.4	-	-
08/11/17 14:00	6	78.3	67.1	77.9	78.3	-	-
08/11/17 15:00	6	72.2	71.0	66.3	72.2	-	-
08/11/17 16:00	6	72.4	71.7	64.5	72.4	-	-
08/11/17 17:00	13	70.6	67.5	67.9	70.6	-	-
08/11/17 18:00	7	71.8	67.8	69.7	71.8	-	-
08/11/17 19:00	7	74.8	73.4	69.4	-	74.8	-
08/11/17 20:00	1	77.7	70.2	76.8	-	77.7	-
08/11/17 21:00	3	74.9	68.9	73.7	-	74.9	-
08/11/17 22:00	4	76.9	74.6	73.3	-	76.9	-
08/11/17 23:00	2	82.0	81.9	65.0	-	-	82.0
09/11/17 0:00	-	70.3	-	70.3	-	-	70.3
09/11/17 1:00	-	56.9	-	56.9	-	-	56.9
09/11/17 2:00	-	56.5	-	56.5	-	-	56.5
09/11/17 3:00	-	58.6	-	58.6	-	-	58.6
09/11/17 4:00	-	68.8	-	68.9	-	-	68.8
09/11/17 5:00	-	64.4	-	64.0	-	-	64.4
09/11/17 6:00	15	84.7	84.1	77.0	-	-	84.7
	<b>107</b>	<b>76.2</b>	<b>73.9</b>	<b>72.6</b>	<b>74.8</b>	<b>76.3</b>	<b>77.7</b>

Location: Mid Runway NMT # 3





## Luxembourg Airport Noise Distribution by Hour

Between 08/11/2017 00:00:00 and 08/11/2017 23:59:59 (Local Time)

Day	Aircraft Events	Total LDEN dB (A)	Aircraft LDEN dB(A)	Background LDEN dB(A)	Total LDay dB(A)	Total LEvening dB(A)	Total LNight dB (A)
08/11/17 7:00	6	68.1	66.9	65.6	68.1	-	-
08/11/17 8:00	4	69.0	68.2	64.8	69.0	-	-
08/11/17 9:00	7	67.2	65.6	62.7	67.2	-	-
08/11/17 10:00	6	63.7	58.3	62.7	63.7	-	-
08/11/17 11:00	9	70.1	69.3	63.5	70.1	-	-
08/11/17 12:00	7	64.9	60.4	63.3	64.9	-	-
08/11/17 13:00	5	70.8	70.2	62.7	70.8	-	-
08/11/17 14:00	7	69.2	67.8	64.0	69.2	-	-
08/11/17 15:00	4	70.8	70.1	62.2	70.8	-	-
08/11/17 16:00	5	69.7	69.0	61.3	69.7	-	-
08/11/17 17:00	11	65.9	64.5	60.8	65.9	-	-
08/11/17 18:00	8	65.6	63.4	61.9	65.6	-	-
08/11/17 19:00	7	72.2	71.2	65.7	-	72.2	-
08/11/17 20:00	4	72.4	71.6	64.3	-	72.4	-
08/11/17 21:00	3	66.6	63.2	64.0	-	66.6	-
08/11/17 22:00	3	72.9	72.3	64.2	-	72.9	-
08/11/17 23:00	2	78.2	77.9	66.3	-	-	78.2
09/11/17 0:00	-	64.5	-	65.3	-	-	64.5
09/11/17 1:00	-	61.9	-	62.4	-	-	61.9
09/11/17 2:00	-	61.6	-	62.0	-	-	61.6
09/11/17 3:00	-	62.8	-	62.9	-	-	62.8
09/11/17 4:00	-	65.5	-	65.9	-	-	65.5
09/11/17 5:00	-	69.1	-	70.3	-	-	69.1
09/11/17 6:00	15	82.7	82.5	73.4	-	-	82.7
	<b>113</b>	<b>72.4</b>	<b>71.7</b>	<b>65.5</b>	<b>68.5</b>	<b>71.6</b>	<b>75.3</b>

