

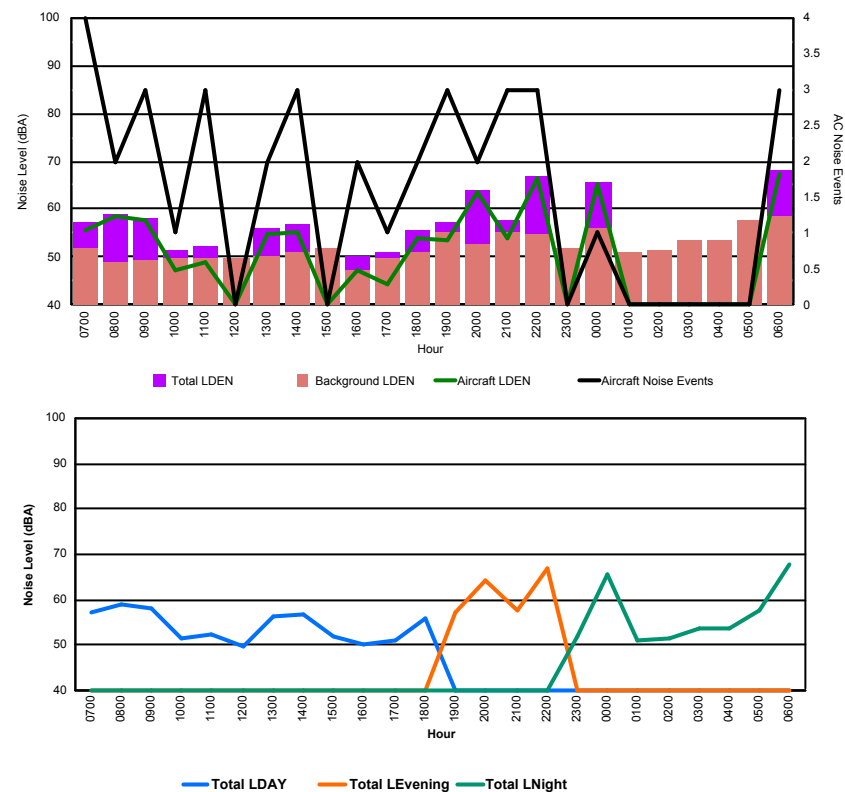


## Luxembourg Airport Noise Distribution by Hour

Between 07/11/2017 00:00:00 and 07/11/2017 23:59:59 (Local Time)

Day	Aircraft Events	Total LDEN dB (A)	Aircraft LDEN dB(A)	Background LDEN dB(A)	Total LDay dB(A)	Total LEvening dB(A)	Total LNight dB (A)
07/11/17 7:00	4	57.1	55.6	51.9	57.1	-	-
07/11/17 8:00	2	59.0	58.6	48.8	59.0	-	-
07/11/17 9:00	3	58.3	57.8	49.5	58.3	-	-
07/11/17 10:00	1	51.5	47.1	49.6	51.5	-	-
07/11/17 11:00	3	52.3	49.0	49.8	52.3	-	-
07/11/17 12:00	-	49.9	-	49.9	49.9	-	-
07/11/17 13:00	2	56.2	54.9	50.4	56.2	-	-
07/11/17 14:00	3	56.7	55.3	51.2	56.7	-	-
07/11/17 15:00	-	51.7	-	51.8	51.7	-	-
07/11/17 16:00	2	50.3	47.3	47.4	50.3	-	-
07/11/17 17:00	1	50.9	44.5	49.8	50.9	-	-
07/11/17 18:00	2	55.7	53.9	51.1	55.7	-	-
07/11/17 19:00	3	57.3	53.5	55.0	-	57.3	-
07/11/17 20:00	2	64.1	63.7	52.6	-	64.1	-
07/11/17 21:00	3	57.5	53.9	55.0	-	57.5	-
07/11/17 22:00	3	66.9	66.6	54.7	-	66.9	-
07/11/17 23:00	-	52.0	-	52.0	-	-	52.0
08/11/17 0:00	1	65.5	65.0	56.2	-	-	65.5
08/11/17 1:00	-	51.1	-	51.1	-	-	51.1
08/11/17 2:00	-	51.3	-	51.4	-	-	51.3
08/11/17 3:00	-	53.6	-	53.6	-	-	53.6
08/11/17 4:00	-	53.6	-	53.6	-	-	53.6
08/11/17 5:00	-	57.5	-	57.6	-	-	57.5
08/11/17 6:00	3	68.0	67.5	58.5	-	-	68.0
	<b>38</b>	<b>60.0</b>	<b>59.0</b>	<b>53.2</b>	<b>55.3</b>	<b>63.3</b>	<b>61.5</b>

Location: Roodt/Syr NMT # 1



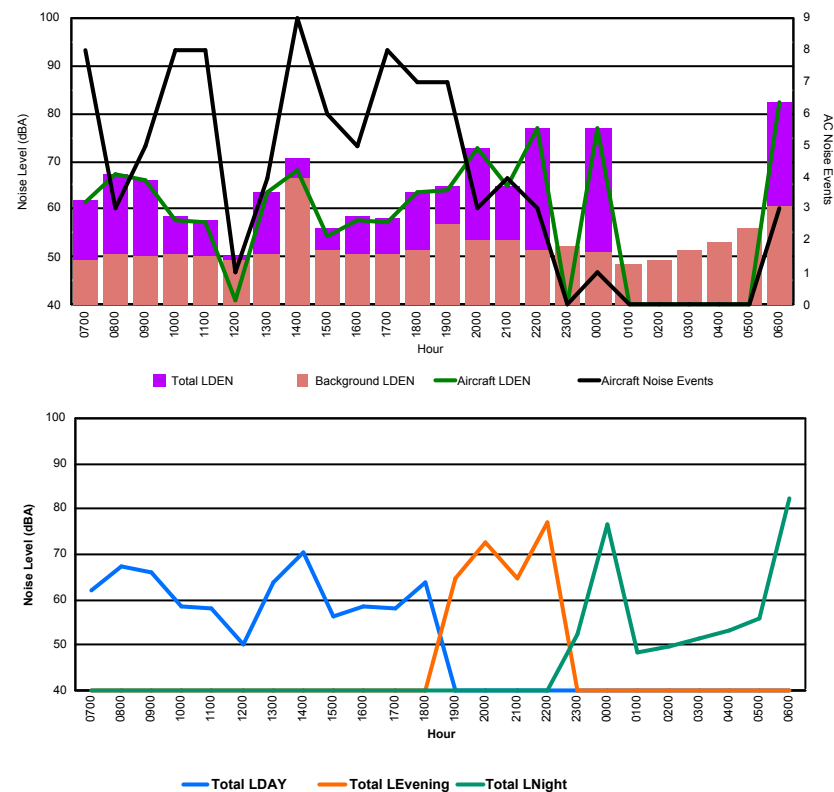


## Luxembourg Airport Noise Distribution by Hour

Between 07/11/2017 00:00:00 and 07/11/2017 23:59:59 (Local Time)

Day	Aircraft Events	Total LDEN dB (A)	Aircraft LDEN dB(A)	Background LDEN dB(A)	Total LDay dB(A)	Total LEvening dB(A)	Total LNight dB (A)
07/11/17 7:00	8	61.9	61.6	49.5	61.9	-	-
07/11/17 8:00	3	67.5	67.4	50.5	67.5	-	-
07/11/17 9:00	5	66.2	66.1	50.0	66.2	-	-
07/11/17 10:00	8	58.6	57.9	50.8	58.6	-	-
07/11/17 11:00	8	57.9	57.1	50.2	57.9	-	-
07/11/17 12:00	1	50.0	41.2	49.4	50.0	-	-
07/11/17 13:00	4	63.7	63.5	50.5	63.7	-	-
07/11/17 14:00	9	70.5	68.3	66.5	70.5	-	-
07/11/17 15:00	6	56.2	54.5	51.6	56.2	-	-
07/11/17 16:00	5	58.6	57.9	50.6	58.6	-	-
07/11/17 17:00	8	58.1	57.4	50.6	58.1	-	-
07/11/17 18:00	7	63.7	63.5	51.4	63.7	-	-
07/11/17 19:00	7	64.6	63.8	56.9	-	64.6	-
07/11/17 20:00	3	72.6	72.6	53.4	-	72.6	-
07/11/17 21:00	4	64.9	64.6	53.4	-	64.9	-
07/11/17 22:00	3	76.9	76.9	51.5	-	76.9	-
07/11/17 23:00	-	52.2	-	52.2	-	-	52.2
08/11/17 0:00	1	76.8	76.8	51.1	-	-	76.8
08/11/17 1:00	-	48.5	-	48.5	-	-	48.5
08/11/17 2:00	-	49.5	-	49.5	-	-	49.5
08/11/17 3:00	-	51.5	-	51.5	-	-	51.5
08/11/17 4:00	-	53.1	-	53.1	-	-	53.1
08/11/17 5:00	-	56.0	-	56.0	-	-	56.0
08/11/17 6:00	3	82.4	82.4	60.5	-	-	82.4
	<b>93</b>	<b>71.3</b>	<b>71.2</b>	<b>55.8</b>	<b>64.0</b>	<b>72.6</b>	<b>74.4</b>

Location: DVOR NMT # 2

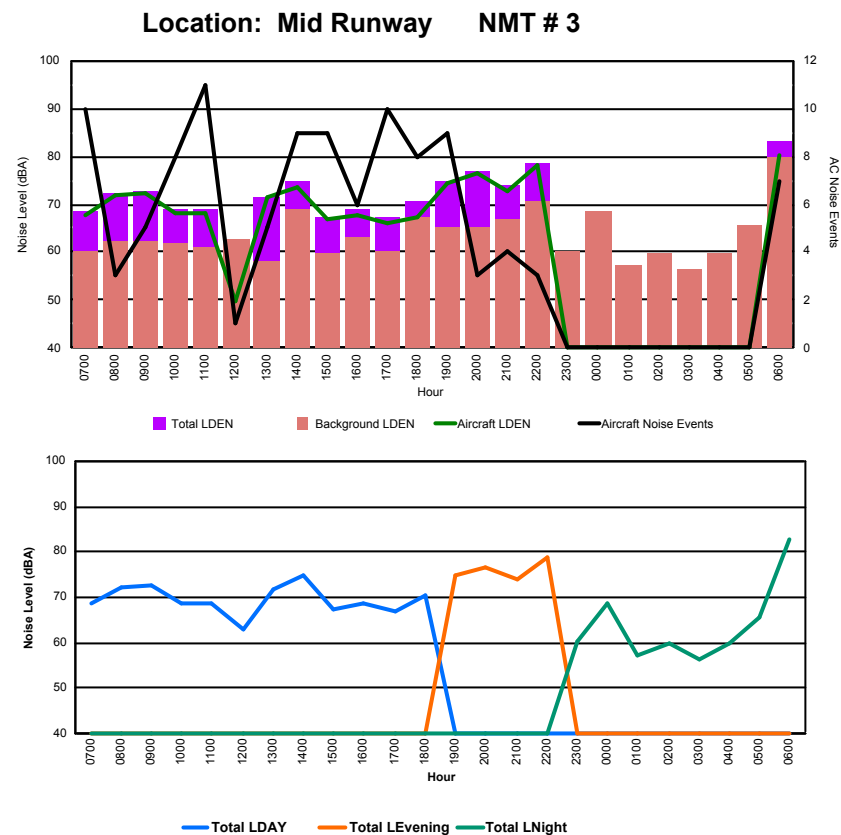




## Luxembourg Airport Noise Distribution by Hour

Between 07/11/2017 00:00:00 and 07/11/2017 23:59:59 (Local Time)

Day	Aircraft Events	Total LDEN dB (A)	Aircraft LDEN dB(A)	Background LDEN dB(A)	Total LDay dB(A)	Total LEvening dB(A)	Total LNight dB (A)
07/11/17 7:00	10	68.5	67.9	60.1	68.5	-	-
07/11/17 8:00	3	72.4	71.9	62.3	72.4	-	-
07/11/17 9:00	5	72.8	72.4	62.4	72.8	-	-
07/11/17 10:00	8	68.9	68.1	61.7	68.9	-	-
07/11/17 11:00	11	68.8	68.1	60.9	68.8	-	-
07/11/17 12:00	1	62.8	49.9	62.7	62.8	-	-
07/11/17 13:00	5	71.6	71.4	58.1	71.6	-	-
07/11/17 14:00	9	74.8	73.5	69.0	74.8	-	-
07/11/17 15:00	9	67.5	66.7	59.7	67.5	-	-
07/11/17 16:00	6	68.9	67.6	63.0	68.9	-	-
07/11/17 17:00	10	67.1	66.2	60.1	67.1	-	-
07/11/17 18:00	8	70.5	67.5	67.5	70.5	-	-
07/11/17 19:00	9	74.8	74.3	65.2	-	74.8	-
07/11/17 20:00	3	76.8	76.5	65.3	-	76.8	-
07/11/17 21:00	4	73.8	72.9	66.7	-	73.8	-
07/11/17 22:00	3	78.7	78.0	70.7	-	78.7	-
07/11/17 23:00	-	60.1	-	60.1	-	-	60.1
08/11/17 0:00	-	68.7	-	68.7	-	-	68.7
08/11/17 1:00	-	57.2	-	57.3	-	-	57.2
08/11/17 2:00	-	59.7	-	59.9	-	-	59.7
08/11/17 3:00	-	56.4	-	56.5	-	-	56.4
08/11/17 4:00	-	59.7	-	59.7	-	-	59.7
08/11/17 5:00	-	65.4	-	65.5	-	-	65.4
08/11/17 6:00	7	83.0	80.2	79.9	-	-	83.0
	111	73.4	71.8	68.3	70.5	76.4	74.3





## Luxembourg Airport Noise Distribution by Hour

Between 07/11/2017 00:00:00 and 07/11/2017 23:59:59 (Local Time)

Day	Aircraft Events	Total LDEN dB (A)	Aircraft LDEN dB(A)	Background LDEN dB(A)	Total LDay dB(A)	Total LEvening dB(A)	Total LNight dB (A)
07/11/17 7:00	2	62.3	51.1	65.0	62.3	-	-
07/11/17 8:00	1	63.4	48.0	65.6	63.4	-	-
07/11/17 9:00	11	68.1	66.4	63.5	68.1	-	-
07/11/17 10:00	10	65.9	62.2	64.2	65.9	-	-
07/11/17 11:00	5	69.1	68.1	62.3	69.1	-	-
07/11/17 12:00	6	67.3	65.8	62.2	67.3	-	-
07/11/17 13:00	9	65.2	62.3	62.5	65.2	-	-
07/11/17 14:00	8	65.1	60.8	63.7	65.1	-	-
07/11/17 15:00	4	66.4	65.1	60.9	66.4	-	-
07/11/17 16:00	10	69.2	68.6	61.0	69.2	-	-
07/11/17 17:00	7	64.0	61.8	60.3	64.0	-	-
07/11/17 18:00	8	70.1	69.6	60.3	70.1	-	-
07/11/17 19:00	2	67.5	61.7	66.2	-	67.5	-
07/11/17 20:00	7	70.1	68.6	64.8	-	70.1	-
07/11/17 21:00	6	67.9	65.7	64.1	-	67.9	-
07/11/17 22:00	8	75.2	75.0	63.3	-	75.2	-
07/11/17 23:00	-	65.2	-	65.2	-	-	65.2
08/11/17 0:00	-	62.8	-	63.4	-	-	62.8
08/11/17 1:00	-	60.7	-	61.1	-	-	60.7
08/11/17 2:00	-	62.1	-	62.5	-	-	62.1
08/11/17 3:00	-	62.9	-	63.0	-	-	62.9
08/11/17 4:00	-	65.7	-	66.1	-	-	65.7
08/11/17 5:00	-	69.1	-	70.4	-	-	69.1
08/11/17 6:00	9	79.1	77.8	87.8	-	-	79.1
	<b>113</b>	<b>69.6</b>	<b>67.8</b>	<b>74.4</b>	<b>67.0</b>	<b>71.4</b>	<b>71.1</b>

Location: NDB-Hamm NMT # 4

