

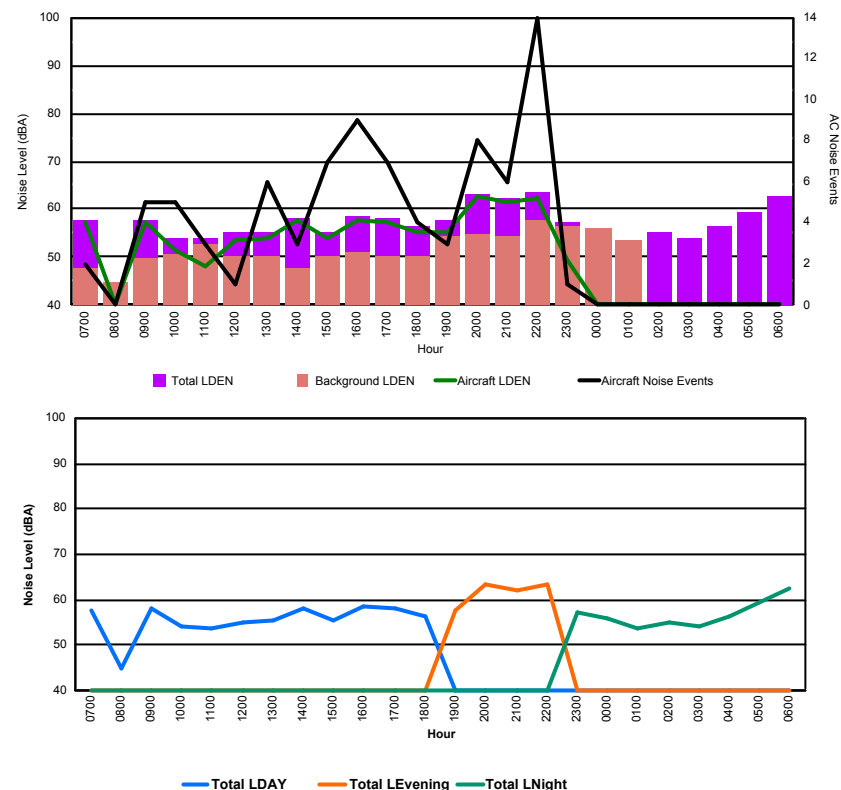


## Luxembourg Airport Noise Distribution by Hour

Between 05/11/2017 00:00:00 and 05/11/2017 23:59:59 (Local Time)

Day	Aircraft Events	Total LDEN dB (A)	Aircraft LDEN dB(A)	Background LDEN dB(A)	Total LDay dB(A)	Total LEvening dB(A)	Total LNight dB (A)
05/11/17 7:00	2	57.8	57.4	47.7	57.8	-	-
05/11/17 8:00	-	44.9	-	44.9	44.9	-	-
05/11/17 9:00	5	57.9	57.2	49.8	57.9	-	-
05/11/17 10:00	5	54.1	51.5	50.8	54.1	-	-
05/11/17 11:00	3	53.8	48.0	52.6	53.8	-	-
05/11/17 12:00	1	55.1	53.4	50.3	55.1	-	-
05/11/17 13:00	6	55.3	53.8	50.3	55.3	-	-
05/11/17 14:00	3	58.1	57.7	47.7	58.1	-	-
05/11/17 15:00	7	55.3	53.8	50.4	55.3	-	-
05/11/17 16:00	9	58.4	57.6	51.0	58.4	-	-
05/11/17 17:00	7	58.1	57.4	50.3	58.1	-	-
05/11/17 18:00	4	56.4	55.2	50.4	56.4	-	-
05/11/17 19:00	3	57.7	55.2	54.3	-	57.7	-
05/11/17 20:00	8	63.3	62.7	54.6	-	63.3	-
05/11/17 21:00	6	62.2	61.5	54.5	-	62.2	-
05/11/17 22:00	14	63.4	62.2	57.9	-	63.4	-
05/11/17 23:00	1	57.3	49.5	56.5	-	-	57.3
06/11/17 0:00	-	55.8	-	55.9	-	-	55.8
06/11/17 1:00	-	53.6	-	53.7	-	-	53.6
06/11/17 2:00	-	55.1	-	-	-	-	55.1
06/11/17 3:00	-	53.9	-	-	-	-	53.9
06/11/17 4:00	-	56.3	-	-	-	-	56.3
06/11/17 5:00	-	59.4	-	-	-	-	59.4
06/11/17 6:00	-	62.7	-	-	-	-	62.7
	<b>84</b>	<b>58.4</b>	<b>55.9</b>	<b>51.9</b>	<b>56.3</b>	<b>62.2</b>	<b>57.8</b>

Location: Roodt/Syr NMT # 1



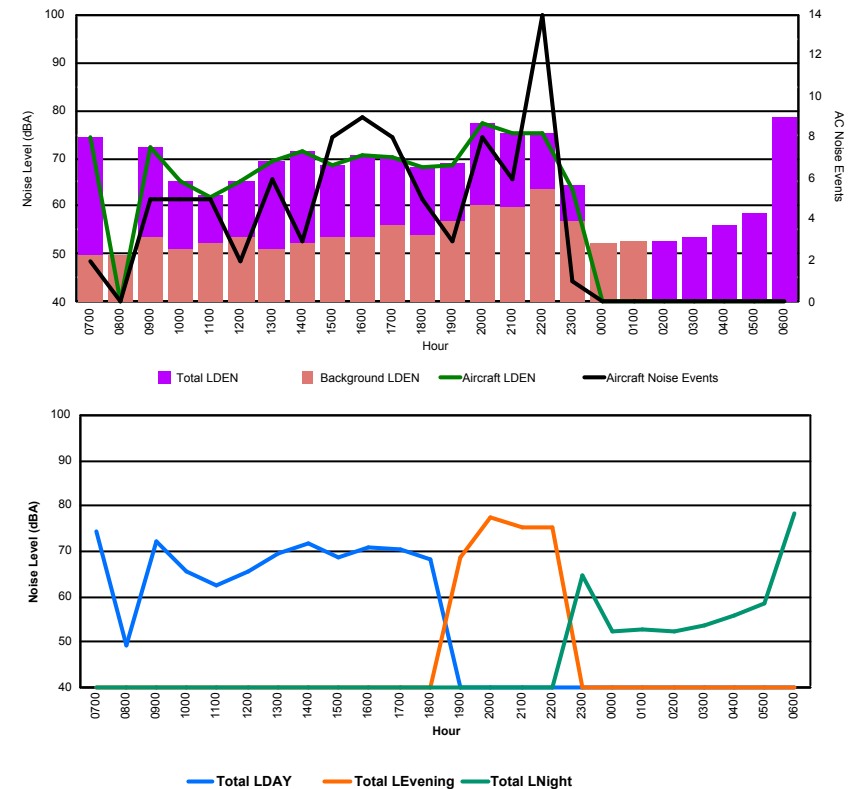


## Luxembourg Airport Noise Distribution by Hour

Between 05/11/2017 00:00:00 and 05/11/2017 23:59:59 (Local Time)

Day	Aircraft Events	Total LDEN dB (A)	Aircraft LDEN dB(A)	Background LDEN dB(A)	Total LDay dB(A)	Total LEvening dB(A)	Total LNight dB (A)
05/11/17 7:00	2	74.5	74.5	49.8	74.5	-	-
05/11/17 8:00	-	49.1	-	49.6	49.1	-	-
05/11/17 9:00	5	72.2	72.2	53.6	72.2	-	-
05/11/17 10:00	5	65.4	65.2	50.9	65.4	-	-
05/11/17 11:00	5	62.4	62.0	52.2	62.4	-	-
05/11/17 12:00	2	65.4	65.1	53.4	65.4	-	-
05/11/17 13:00	6	69.4	69.3	50.9	69.4	-	-
05/11/17 14:00	3	71.6	71.5	52.4	71.6	-	-
05/11/17 15:00	8	68.5	68.4	53.4	68.5	-	-
05/11/17 16:00	9	70.8	70.8	53.7	70.8	-	-
05/11/17 17:00	8	70.4	70.3	56.2	70.4	-	-
05/11/17 18:00	5	68.2	68.0	53.8	68.2	-	-
05/11/17 19:00	3	68.8	68.5	57.0	-	68.8	-
05/11/17 20:00	8	77.3	77.2	60.1	-	77.3	-
05/11/17 21:00	6	75.3	75.2	59.7	-	75.3	-
05/11/17 22:00	14	75.4	75.2	63.5	-	75.4	-
05/11/17 23:00	1	64.5	63.7	56.9	-	-	64.5
06/11/17 0:00	-	52.3	-	52.3	-	-	52.3
06/11/17 1:00	-	52.9	-	52.9	-	-	52.9
06/11/17 2:00	-	52.5	-	-	-	-	52.5
06/11/17 3:00	-	53.7	-	-	-	-	53.7
06/11/17 4:00	-	56.0	-	-	-	-	56.0
06/11/17 5:00	-	58.6	-	-	-	-	58.6
06/11/17 6:00	-	78.5	-	-	-	-	78.5
	<b>90</b>	<b>71.2</b>	<b>70.0</b>	<b>55.2</b>	<b>69.8</b>	<b>75.1</b>	<b>69.7</b>

Location: DVOR NMT # 2



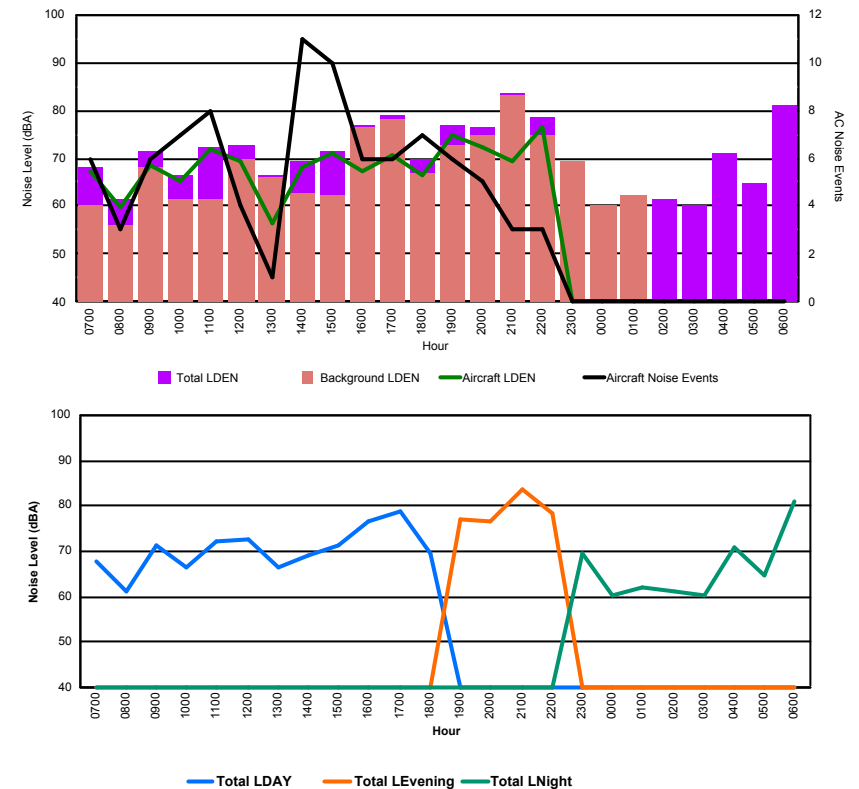


## Luxembourg Airport Noise Distribution by Hour

Between 05/11/2017 00:00:00 and 05/11/2017 23:59:59 (Local Time)

Day	Aircraft Events	Total LDEN dB (A)	Aircraft LDEN dB(A)	Background LDEN dB(A)	Total LDay dB(A)	Total LEvening dB(A)	Total LNight dB (A)
05/11/17 7:00	6	68.0	67.4	60.0	68.0	-	-
05/11/17 8:00	3	61.4	59.8	56.2	61.4	-	-
05/11/17 9:00	6	71.4	68.6	68.3	71.4	-	-
05/11/17 10:00	7	66.6	65.2	61.5	66.6	-	-
05/11/17 11:00	8	72.1	71.8	61.3	72.1	-	-
05/11/17 12:00	4	72.7	69.4	70.0	72.7	-	-
05/11/17 13:00	1	66.6	56.4	66.2	66.6	-	-
05/11/17 14:00	11	69.3	68.3	62.7	69.3	-	-
05/11/17 15:00	10	71.4	70.9	62.2	71.4	-	-
05/11/17 16:00	6	76.8	67.3	76.3	76.8	-	-
05/11/17 17:00	6	78.9	70.8	78.2	78.9	-	-
05/11/17 18:00	7	69.6	66.5	67.0	69.6	-	-
05/11/17 19:00	6	77.0	74.9	72.8	-	77.0	-
05/11/17 20:00	5	76.5	72.1	74.6	-	76.5	-
05/11/17 21:00	3	83.5	69.5	83.3	-	83.5	-
05/11/17 22:00	3	78.6	76.3	74.8	-	78.6	-
05/11/17 23:00	-	69.5	-	69.5	-	-	69.5
06/11/17 0:00	-	60.3	-	60.3	-	-	60.3
06/11/17 1:00	-	61.9	-	62.1	-	-	61.9
06/11/17 2:00	-	61.4	-	-	-	-	61.4
06/11/17 3:00	-	60.4	-	-	-	-	60.4
06/11/17 4:00	-	71.0	-	-	-	-	71.0
06/11/17 5:00	-	64.9	-	-	-	-	64.9
06/11/17 6:00	-	81.2	-	-	-	-	81.2
	<b>92</b>	<b>75.1</b>	<b>68.8</b>	<b>72.7</b>	<b>72.7</b>	<b>79.9</b>	<b>73.1</b>

Location: Mid Runway NMT # 3





## Luxembourg Airport Noise Distribution by Hour

Between 05/11/2017 00:00:00 and 05/11/2017 23:59:59 (Local Time)

Day	Aircraft Events	Total LDEN dB (A)	Aircraft LDEN dB(A)	Background LDEN dB(A)	Total LDay dB(A)	Total LEvening dB(A)	Total LNight dB (A)
05/11/17 7:00	3	59.9	59.0	52.4	59.9	-	-
05/11/17 8:00	3	54.6	48.5	53.5	54.6	-	-
05/11/17 9:00	3	68.8	68.6	55.7	68.8	-	-
05/11/17 10:00	2	58.0	54.0	55.9	58.0	-	-
05/11/17 11:00	7	68.7	68.4	56.7	68.7	-	-
05/11/17 12:00	7	70.1	69.9	56.6	70.1	-	-
05/11/17 13:00	3	56.8	48.6	56.1	56.8	-	-
05/11/17 14:00	6	65.1	64.3	57.0	65.1	-	-
05/11/17 15:00	3	67.1	66.6	57.5	67.1	-	-
05/11/17 16:00	7	64.2	63.1	58.5	64.2	-	-
05/11/17 17:00	7	70.2	69.9	58.5	70.2	-	-
05/11/17 18:00	9	61.9	59.3	58.7	61.9	-	-
05/11/17 19:00	7	74.2	73.9	62.7	-	74.2	-
05/11/17 20:00	4	69.9	69.2	61.6	-	69.9	-
05/11/17 21:00	6	68.3	67.3	61.7	-	68.3	-
05/11/17 22:00	4	76.1	75.9	61.8	-	76.1	-
05/11/17 23:00	-	65.8	-	65.8	-	-	65.8
06/11/17 0:00	-	62.3	-	62.9	-	-	62.3
06/11/17 1:00	-	62.4	-	62.9	-	-	62.4
06/11/17 2:00	-	62.9	-	-	-	-	62.9
06/11/17 3:00	-	63.7	-	-	-	-	63.7
06/11/17 4:00	-	76.9	-	-	-	-	76.9
06/11/17 5:00	-	70.1	-	-	-	-	70.1
06/11/17 6:00	-	75.8	-	-	-	-	75.8
	<b>81</b>	<b>70.1</b>	<b>67.1</b>	<b>59.1</b>	<b>66.3</b>	<b>73.2</b>	<b>71.3</b>

