

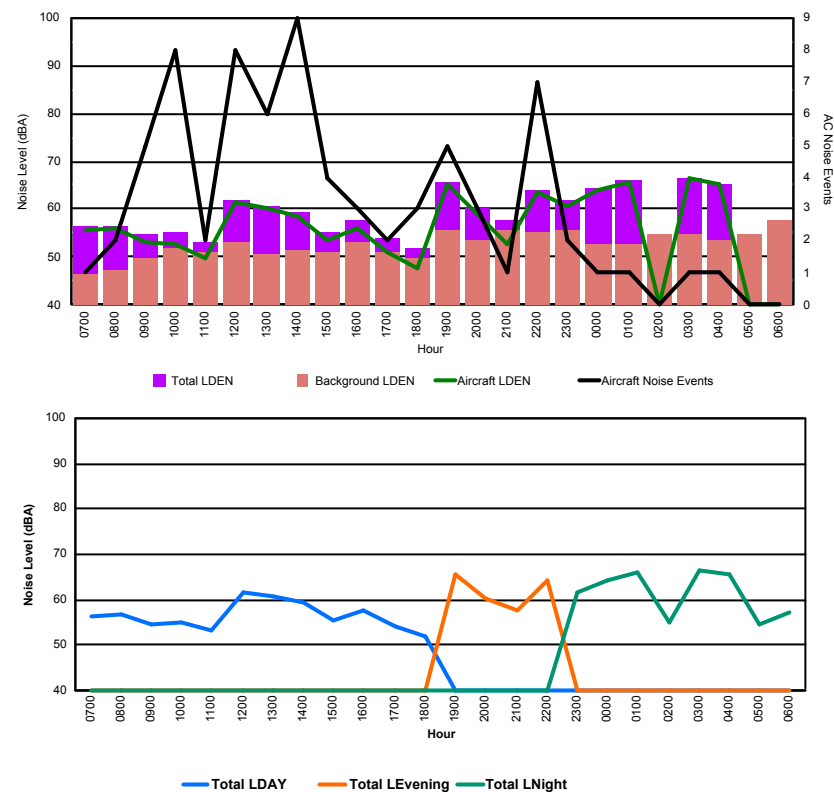


## Luxembourg Airport Noise Distribution by Hour

Between 04/11/2017 00:00:00 and 04/11/2017 23:59:59 (Local Time)

Day	Aircraft Events	Total LDEN dB (A)	Aircraft LDEN dB(A)	Background LDEN dB(A)	Total LDay dB(A)	Total LEvening dB(A)	Total LNight dB (A)
04/11/17 7:00	1	56.3	55.8	46.3	56.3	-	-
04/11/17 8:00	2	56.6	56.1	47.1	56.6	-	-
04/11/17 9:00	5	54.6	53.0	49.9	54.6	-	-
04/11/17 10:00	8	55.1	52.5	51.9	55.1	-	-
04/11/17 11:00	2	53.3	49.7	51.0	53.3	-	-
04/11/17 12:00	8	61.8	61.3	53.2	61.8	-	-
04/11/17 13:00	6	60.6	60.2	50.6	60.6	-	-
04/11/17 14:00	9	59.3	58.6	51.3	59.3	-	-
04/11/17 15:00	4	55.3	53.5	50.9	55.3	-	-
04/11/17 16:00	3	57.8	55.9	53.3	57.8	-	-
04/11/17 17:00	2	54.1	51.1	51.2	54.1	-	-
04/11/17 18:00	3	51.8	47.6	49.9	51.8	-	-
04/11/17 19:00	5	65.6	65.2	55.7	-	65.6	-
04/11/17 20:00	3	60.2	59.1	53.7	-	60.2	-
04/11/17 21:00	1	57.5	52.8	55.7	-	57.5	-
04/11/17 22:00	7	64.1	63.5	55.2	-	64.1	-
04/11/17 23:00	2	61.7	60.5	55.5	-	-	61.7
05/11/17 0:00	1	64.2	63.8	52.8	-	-	64.2
05/11/17 1:00	1	66.0	65.8	52.5	-	-	66.0
05/11/17 2:00	-	54.8	-	54.8	-	-	54.8
05/11/17 3:00	1	66.6	66.3	54.8	-	-	66.6
05/11/17 4:00	1	65.4	65.0	53.6	-	-	65.4
05/11/17 5:00	-	54.7	-	54.8	-	-	54.7
05/11/17 6:00	-	57.4	-	57.6	-	-	57.4
	<b>75</b>	<b>61.2</b>	<b>60.4</b>	<b>53.4</b>	<b>57.4</b>	<b>62.9</b>	<b>63.3</b>

Location: Roodt/Syr NMT # 1



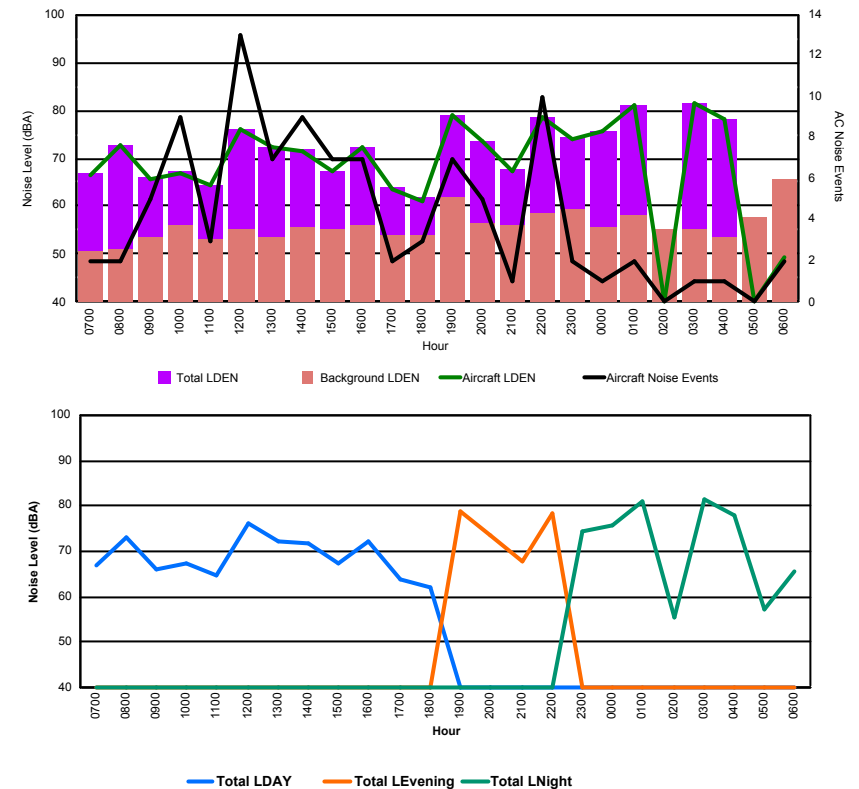


## Luxembourg Airport Noise Distribution by Hour

Between 04/11/2017 00:00:00 and 04/11/2017 23:59:59 (Local Time)

Day	Aircraft Events	Total LDEN dB (A)	Aircraft LDEN dB(A)	Background LDEN dB(A)	Total LDay dB(A)	Total LEvening dB(A)	Total LNight dB (A)
04/11/17 7:00	2	66.8	66.6	50.8	66.8	-	-
04/11/17 8:00	2	72.9	72.8	51.2	72.9	-	-
04/11/17 9:00	5	66.0	65.7	53.5	66.0	-	-
04/11/17 10:00	9	67.2	66.8	56.2	67.2	-	-
04/11/17 11:00	3	64.5	64.2	53.1	64.5	-	-
04/11/17 12:00	13	76.0	76.0	55.4	76.0	-	-
04/11/17 13:00	7	72.3	72.3	53.5	72.3	-	-
04/11/17 14:00	9	71.7	71.6	55.6	71.7	-	-
04/11/17 15:00	7	67.4	67.2	55.2	67.4	-	-
04/11/17 16:00	7	72.3	72.2	55.9	72.3	-	-
04/11/17 17:00	2	63.9	63.4	54.1	63.9	-	-
04/11/17 18:00	3	61.9	61.1	54.1	61.9	-	-
04/11/17 19:00	7	78.8	78.8	61.7	-	78.8	-
04/11/17 20:00	5	73.7	73.6	56.4	-	73.7	-
04/11/17 21:00	1	67.8	67.5	56.2	-	67.8	-
04/11/17 22:00	10	78.6	78.6	58.5	-	78.6	-
04/11/17 23:00	2	74.2	74.0	59.4	-	-	74.2
05/11/17 0:00	1	75.7	75.6	55.5	-	-	75.7
05/11/17 1:00	2	81.1	81.1	58.0	-	-	81.1
05/11/17 2:00	-	55.3	-	55.3	-	-	55.3
05/11/17 3:00	1	81.5	81.4	55.2	-	-	81.5
05/11/17 4:00	1	78.1	78.0	53.6	-	-	78.1
05/11/17 5:00	-	57.4	-	57.5	-	-	57.4
05/11/17 6:00	2	65.5	49.5	65.7	-	-	65.5
	<b>101</b>	<b>74.7</b>	<b>74.6</b>	<b>57.4</b>	<b>70.5</b>	<b>76.5</b>	<b>77.0</b>

Location: DVOR NMT # 2



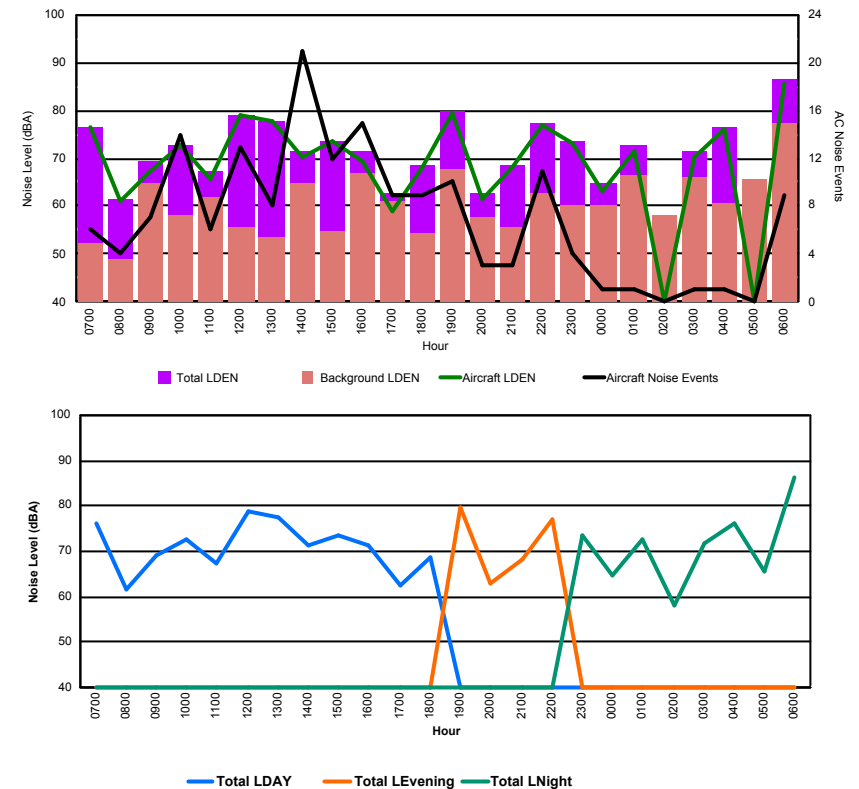


## Luxembourg Airport Noise Distribution by Hour

Between 04/11/2017 00:00:00 and 04/11/2017 23:59:59 (Local Time)

Day	Aircraft Events	Total LDEN dB (A)	Aircraft LDEN dB(A)	Background LDEN dB(A)	Total LDay dB(A)	Total LEvening dB(A)	Total LNight dB (A)
04/11/17 7:00	6	76.3	76.4	52.1	76.3	-	-
04/11/17 8:00	4	61.5	61.2	49.0	61.5	-	-
04/11/17 9:00	7	69.2	67.4	64.6	69.2	-	-
04/11/17 10:00	14	72.7	72.6	58.2	72.7	-	-
04/11/17 11:00	6	67.2	65.8	61.9	67.2	-	-
04/11/17 12:00	13	78.9	78.8	55.5	78.9	-	-
04/11/17 13:00	8	77.6	77.6	53.4	77.6	-	-
04/11/17 14:00	21	71.3	70.1	64.8	71.3	-	-
04/11/17 15:00	12	73.7	73.7	54.9	73.7	-	-
04/11/17 16:00	15	71.3	69.2	67.0	71.3	-	-
04/11/17 17:00	9	62.7	58.9	61.1	62.7	-	-
04/11/17 18:00	9	68.5	68.3	54.5	68.5	-	-
04/11/17 19:00	10	79.7	79.5	67.6	-	79.7	-
04/11/17 20:00	3	62.9	61.4	57.8	-	62.9	-
04/11/17 21:00	3	68.4	68.2	55.7	-	68.4	-
04/11/17 22:00	11	77.1	77.0	62.7	-	77.1	-
04/11/17 23:00	4	73.4	73.2	60.0	-	-	73.4
05/11/17 0:00	1	64.9	63.1	60.2	-	-	64.9
05/11/17 1:00	1	72.7	71.5	66.5	-	-	72.7
05/11/17 2:00	-	58.1	-	58.1	-	-	58.1
05/11/17 3:00	1	71.6	70.2	65.9	-	-	71.6
05/11/17 4:00	1	76.3	76.1	60.7	-	-	76.3
05/11/17 5:00	-	65.5	-	65.7	-	-	65.5
05/11/17 6:00	9	86.3	85.7	77.5	-	-	86.3
	<b>168</b>	<b>76.0</b>	<b>75.6</b>	<b>66.0</b>	<b>73.5</b>	<b>75.8</b>	<b>78.2</b>

Location: Mid Runway NMT # 3





## Luxembourg Airport Noise Distribution by Hour

Between 04/11/2017 00:00:00 and 04/11/2017 23:59:59 (Local Time)

Day	Aircraft Events	Total LDEN dB (A)	Aircraft LDEN dB(A)	Background LDEN dB(A)	Total LDay dB(A)	Total LEvening dB(A)	Total LNight dB (A)
04/11/17 7:00	4	60.6	56.8	59.6	60.6	-	-
04/11/17 8:00	4	58.3	52.1	58.4	58.3	-	-
04/11/17 9:00	3	66.4	65.7	58.2	66.4	-	-
04/11/17 10:00	7	69.9	69.6	58.6	69.9	-	-
04/11/17 11:00	6	59.8	56.1	57.6	59.8	-	-
04/11/17 12:00	3	67.0	66.5	57.3	67.0	-	-
04/11/17 13:00	3	59.7	55.8	57.4	59.7	-	-
04/11/17 14:00	9	64.7	64.1	56.5	64.7	-	-
04/11/17 15:00	6	69.5	69.3	55.9	69.5	-	-
04/11/17 16:00	10	65.9	65.2	58.0	65.9	-	-
04/11/17 17:00	5	60.2	55.8	58.4	60.2	-	-
04/11/17 18:00	3	62.6	60.1	59.1	62.6	-	-
04/11/17 19:00	5	76.0	75.7	64.4	-	76.0	-
04/11/17 20:00	-	63.5	-	63.5	-	63.5	-
04/11/17 21:00	2	65.8	62.9	62.7	-	65.8	-
04/11/17 22:00	3	72.4	71.9	63.0	-	72.4	-
04/11/17 23:00	1	73.7	72.5	67.5	-	-	73.7
05/11/17 0:00	-	65.6	-	67.0	-	-	65.6
05/11/17 1:00	-	63.8	-	64.7	-	-	63.8
05/11/17 2:00	-	61.5	-	61.9	-	-	61.5
05/11/17 3:00	-	60.6	-	60.6	-	-	60.6
05/11/17 4:00	-	60.9	-	60.9	-	-	60.9
05/11/17 5:00	-	62.3	-	62.3	-	-	62.3
05/11/17 6:00	11	83.0	83.0	63.6	-	-	83.0
	<b>85</b>	<b>71.5</b>	<b>71.1</b>	<b>62.0</b>	<b>65.4</b>	<b>72.0</b>	<b>74.7</b>

