

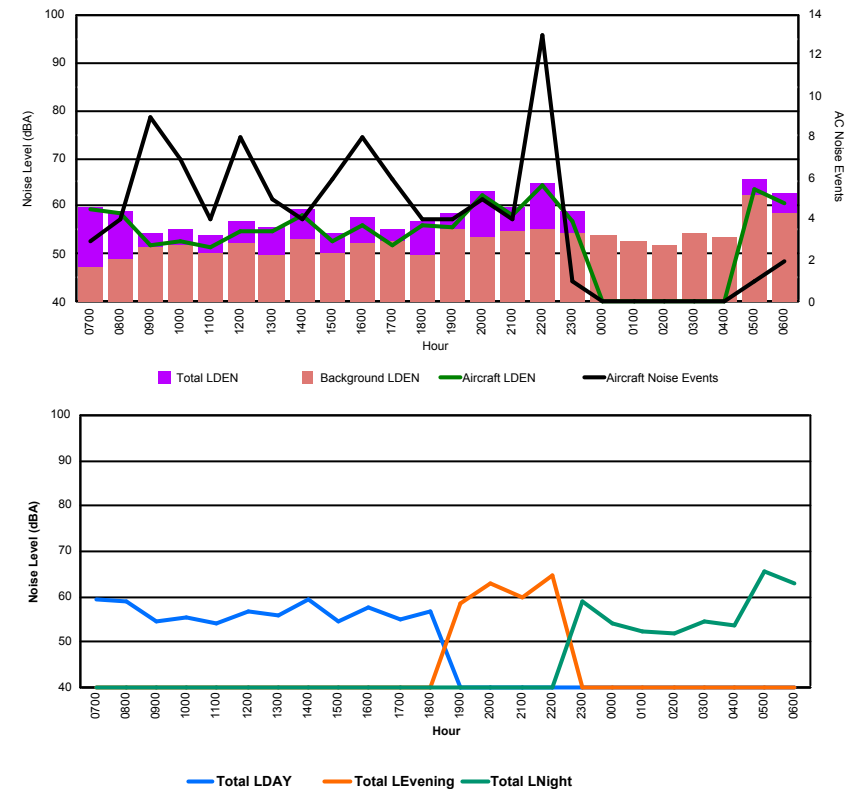


## Luxembourg Airport Noise Distribution by Hour

Between 30/10/2017 00:00:00 and 30/10/2017 23:59:59 (Local Time)

Day	Aircraft Events	Total LDEN dB (A)	Aircraft LDEN dB(A)	Background LDEN dB(A)	Total LDay dB(A)	Total LEvening dB(A)	Total LNight dB (A)
30/10/17 7:00	3	59.6	59.3	47.4	59.6	-	-
30/10/17 8:00	4	59.1	58.6	48.9	59.1	-	-
30/10/17 9:00	9	54.5	51.7	51.6	54.5	-	-
30/10/17 10:00	7	55.3	52.9	51.9	55.3	-	-
30/10/17 11:00	4	53.9	51.6	50.3	53.9	-	-
30/10/17 12:00	8	56.8	54.9	52.4	56.8	-	-
30/10/17 13:00	5	55.8	54.7	49.7	55.8	-	-
30/10/17 14:00	4	59.4	58.2	53.2	59.4	-	-
30/10/17 15:00	6	54.4	52.6	50.0	54.4	-	-
30/10/17 16:00	8	57.5	56.0	52.3	57.5	-	-
30/10/17 17:00	6	55.1	51.7	52.6	55.1	-	-
30/10/17 18:00	4	56.8	55.9	49.7	56.8	-	-
30/10/17 19:00	4	58.4	55.7	55.1	-	58.4	-
30/10/17 20:00	5	63.0	62.4	53.7	-	63.0	-
30/10/17 21:00	4	59.8	58.2	54.8	-	59.8	-
30/10/17 22:00	13	64.9	64.5	55.3	-	64.9	-
30/10/17 23:00	1	58.9	57.0	54.5	-	-	58.9
31/10/17 0:00	-	54.0	-	54.1	-	-	54.0
31/10/17 1:00	-	52.5	-	52.6	-	-	52.5
31/10/17 2:00	-	51.8	-	51.8	-	-	51.8
31/10/17 3:00	-	54.5	-	54.5	-	-	54.5
31/10/17 4:00	-	53.5	-	53.5	-	-	53.5
31/10/17 5:00	1	65.8	63.4	62.1	-	-	65.8
31/10/17 6:00	2	62.8	60.8	58.4	-	-	62.8
	<b>98</b>	<b>59.3</b>	<b>57.6</b>	<b>54.3</b>	<b>57.0</b>	<b>62.3</b>	<b>59.8</b>

Location: Roodt/Syr NMT # 1



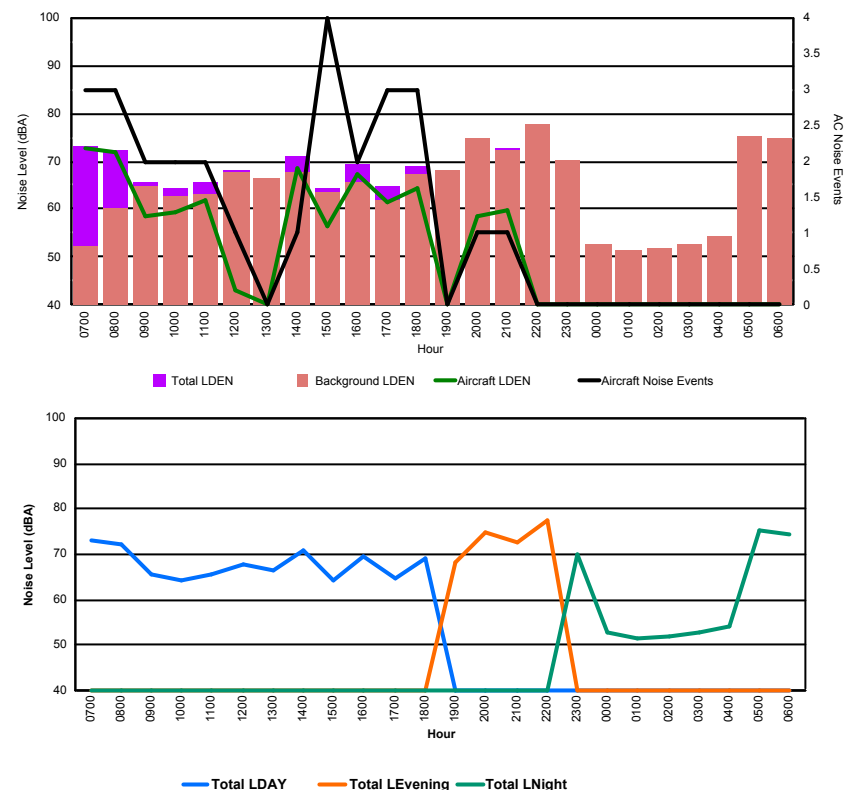


## Luxembourg Airport Noise Distribution by Hour

Between 30/10/2017 00:00:00 and 30/10/2017 23:59:59 (Local Time)

Day	Aircraft Events	Total LDEN dB (A)	Aircraft LDEN dB(A)	Background LDEN dB(A)	Total LDay dB(A)	Total LEvening dB(A)	Total LNight dB (A)
30/10/17 7:00	3	73.0	72.9	52.4	73.0	-	-
30/10/17 8:00	3	72.2	71.9	60.3	72.2	-	-
30/10/17 9:00	2	65.5	58.4	64.6	65.5	-	-
30/10/17 10:00	2	64.3	59.2	62.7	64.3	-	-
30/10/17 11:00	2	65.7	61.9	63.3	65.7	-	-
30/10/17 12:00	1	68.0	43.1	67.9	68.0	-	-
30/10/17 13:00	-	66.4	-	66.4	66.4	-	-
30/10/17 14:00	1	71.1	68.5	67.7	71.1	-	-
30/10/17 15:00	4	64.4	56.4	63.7	64.4	-	-
30/10/17 16:00	2	69.5	67.4	65.5	69.5	-	-
30/10/17 17:00	3	64.7	61.6	61.7	64.7	-	-
30/10/17 18:00	3	69.0	64.4	67.1	69.0	-	-
30/10/17 19:00	-	68.3	-	68.3	-	68.3	-
30/10/17 20:00	1	74.8	58.6	74.7	-	74.8	-
30/10/17 21:00	1	72.7	59.7	72.4	-	72.7	-
30/10/17 22:00	-	77.7	-	77.7	-	77.7	-
30/10/17 23:00	-	70.1	-	70.1	-	-	70.1
31/10/17 0:00	-	52.8	-	52.8	-	-	52.8
31/10/17 1:00	-	51.3	-	51.3	-	-	51.3
31/10/17 2:00	-	52.0	-	52.0	-	-	52.0
31/10/17 3:00	-	52.6	-	52.6	-	-	52.6
31/10/17 4:00	-	54.3	-	54.3	-	-	54.3
31/10/17 5:00	-	75.4	-	75.4	-	-	75.4
31/10/17 6:00	-	74.5	-	74.6	-	-	74.5
	<b>28</b>	<b>70.7</b>	<b>63.8</b>	<b>69.7</b>	<b>68.9</b>	<b>74.6</b>	<b>69.7</b>

Location: DVOR NMT # 2

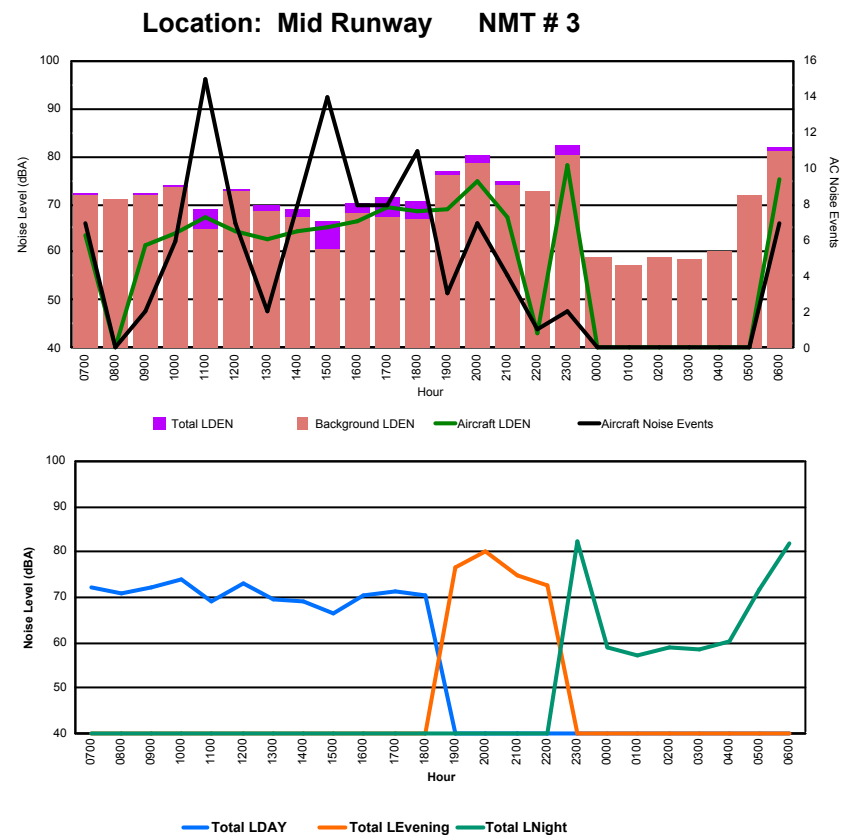




## Luxembourg Airport Noise Distribution by Hour

Between 30/10/2017 00:00:00 and 30/10/2017 23:59:59 (Local Time)

Day	Aircraft Events	Total LDEN dB (A)	Aircraft LDEN dB(A)	Background LDEN dB(A)	Total LDay dB(A)	Total LEvening dB(A)	Total LNight dB (A)
30/10/17 7:00	7	72.2	63.4	71.7	72.2	-	-
30/10/17 8:00	-	70.8	-	70.9	70.8	-	-
30/10/17 9:00	2	72.2	61.5	71.8	72.2	-	-
30/10/17 10:00	6	74.0	64.1	73.6	74.0	-	-
30/10/17 11:00	15	69.0	67.1	64.8	69.0	-	-
30/10/17 12:00	7	73.3	64.4	72.7	73.3	-	-
30/10/17 13:00	2	69.6	62.8	68.6	69.6	-	-
30/10/17 14:00	8	69.0	64.2	67.3	69.0	-	-
30/10/17 15:00	14	66.6	65.4	60.5	66.6	-	-
30/10/17 16:00	8	70.4	66.4	68.3	70.4	-	-
30/10/17 17:00	8	71.3	69.3	67.2	71.3	-	-
30/10/17 18:00	11	70.6	68.5	66.7	70.6	-	-
30/10/17 19:00	3	76.8	69.0	76.1	-	76.8	-
30/10/17 20:00	7	80.2	75.0	78.7	-	80.2	-
30/10/17 21:00	4	74.7	67.5	73.8	-	74.7	-
30/10/17 22:00	1	72.6	43.3	72.7	-	72.6	-
30/10/17 23:00	2	82.4	78.2	80.3	-	-	82.4
31/10/17 0:00	-	59.0	-	59.1	-	-	59.0
31/10/17 1:00	-	57.3	-	57.3	-	-	57.3
31/10/17 2:00	-	59.1	-	59.1	-	-	59.1
31/10/17 3:00	-	58.5	-	58.5	-	-	58.5
31/10/17 4:00	-	60.2	-	60.3	-	-	60.2
31/10/17 5:00	-	71.7	-	71.9	-	-	71.7
31/10/17 6:00	7	81.8	75.2	81.1	-	-	81.8
	<b>112</b>	<b>74.7</b>	<b>68.9</b>	<b>73.4</b>	<b>71.2</b>	<b>77.0</b>	<b>76.3</b>





## Luxembourg Airport Noise Distribution by Hour

Between 30/10/2017 00:00:00 and 30/10/2017 23:59:59 (Local Time)

Day	Aircraft Events	Total LDEN dB (A)	Aircraft LDEN dB(A)	Background LDEN dB(A)	Total LDay dB(A)	Total LEvening dB(A)	Total LNight dB (A)
30/10/17 7:00	7	63.1	57.5	65.9	63.1	-	-
30/10/17 8:00	1	69.1	68.0	65.4	69.1	-	-
30/10/17 9:00	5	69.6	68.6	63.4	69.6	-	-
30/10/17 10:00	12	71.9	71.4	63.8	71.9	-	-
30/10/17 11:00	9	64.5	61.8	61.5	64.5	-	-
30/10/17 12:00	13	72.5	72.2	61.5	72.5	-	-
30/10/17 13:00	6	64.3	61.4	61.5	64.3	-	-
30/10/17 14:00	5	62.9	58.5	61.1	62.9	-	-
30/10/17 15:00	8	62.5	57.8	60.8	62.5	-	-
30/10/17 16:00	9	68.4	67.4	61.8	68.4	-	-
30/10/17 17:00	9	67.6	66.5	61.4	67.6	-	-
30/10/17 18:00	10	63.3	60.5	60.3	63.3	-	-
30/10/17 19:00	7	73.3	72.7	65.0	-	73.3	-
30/10/17 20:00	4	74.4	73.7	66.0	-	74.4	-
30/10/17 21:00	3	71.5	70.5	64.5	-	71.5	-
30/10/17 22:00	-	64.4	-	64.5	-	64.4	-
30/10/17 23:00	5	79.9	79.7	67.4	-	-	79.9
31/10/17 0:00	-	65.0	-	66.0	-	-	65.0
31/10/17 1:00	-	63.2	-	63.8	-	-	63.2
31/10/17 2:00	-	62.8	-	63.3	-	-	62.8
31/10/17 3:00	-	64.8	-	65.1	-	-	64.8
31/10/17 4:00	-	66.7	-	67.3	-	-	66.7
31/10/17 5:00	-	69.6	-	70.9	-	-	69.6
31/10/17 6:00	12	78.3	77.4	74.5	-	-	78.3
	<b>125</b>	<b>71.4</b>	<b>70.4</b>	<b>66.1</b>	<b>68.1</b>	<b>72.2</b>	<b>73.7</b>

Location: NDB-Hamm NMT # 4

