

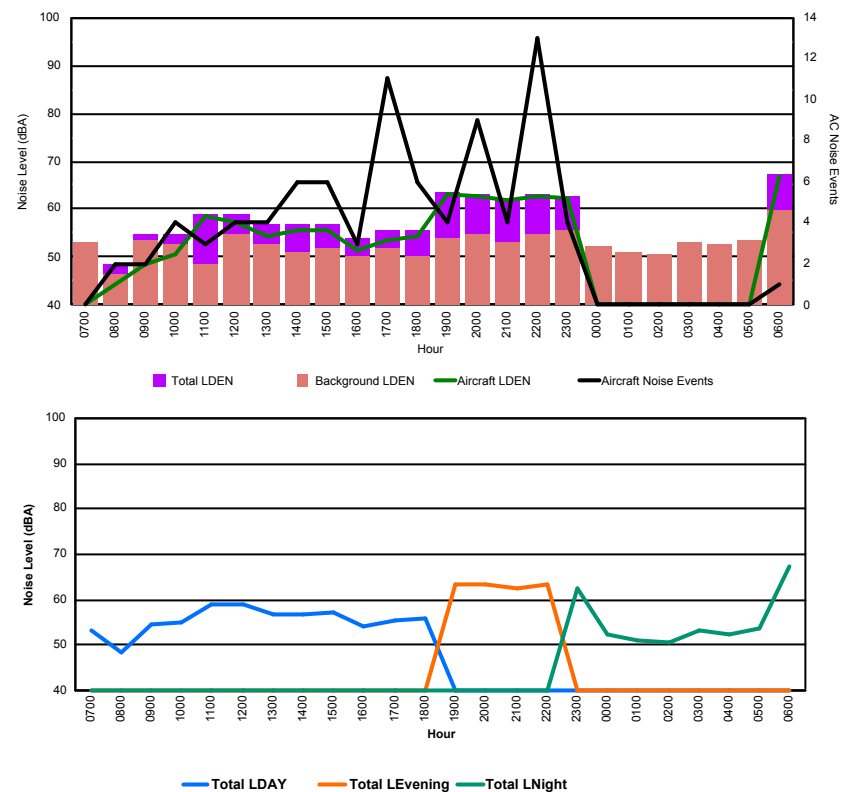


Luxembourg Airport Noise Distribution by Hour

Between 29/10/2017 00:00:00 and 29/10/2017 23:59:59 (Local Time)

Day	Aircraft Events	Total LDEN dB (A)	Aircraft LDEN dB(A)	Background LDEN dB(A)	Total LDay dB(A)	Total LEvening dB(A)	Total LNight dB (A)
29/10/17 7:00	-	53.1	-	53.1	53.1	-	-
29/10/17 8:00	2	48.5	44.4	46.5	48.5	-	-
29/10/17 9:00	2	54.7	48.4	53.7	54.7	-	-
29/10/17 10:00	4	54.8	50.7	52.7	54.8	-	-
29/10/17 11:00	3	58.9	58.5	48.4	58.9	-	-
29/10/17 12:00	4	59.0	57.1	54.6	59.0	-	-
29/10/17 13:00	4	56.7	54.4	52.9	56.7	-	-
29/10/17 14:00	6	56.9	55.6	51.2	56.9	-	-
29/10/17 15:00	6	57.0	55.6	51.7	57.0	-	-
29/10/17 16:00	3	54.0	51.6	50.4	54.0	-	-
29/10/17 17:00	11	55.6	53.5	51.8	55.6	-	-
29/10/17 18:00	6	55.7	54.5	50.1	55.7	-	-
29/10/17 19:00	4	63.6	63.2	53.9	-	63.6	-
29/10/17 20:00	9	63.3	62.6	54.8	-	63.3	-
29/10/17 21:00	4	62.5	62.0	53.2	-	62.5	-
29/10/17 22:00	13	63.3	62.6	54.8	-	63.3	-
29/10/17 23:00	4	62.7	62.2	55.5	-	-	62.7
30/10/17 0:00	-	52.3	-	52.4	-	-	52.3
30/10/17 1:00	-	51.0	-	51.1	-	-	51.0
30/10/17 2:00	-	50.6	-	50.6	-	-	50.6
30/10/17 3:00	-	53.3	-	53.3	-	-	53.3
30/10/17 4:00	-	52.5	-	52.5	-	-	52.5
30/10/17 5:00	-	53.7	-	53.7	-	-	53.7
30/10/17 6:00	1	67.5	66.7	59.8	-	-	67.5
	86	59.6	58.4	53.4	56.1	63.2	60.3

Location: Roodt/Syr NMT # 1



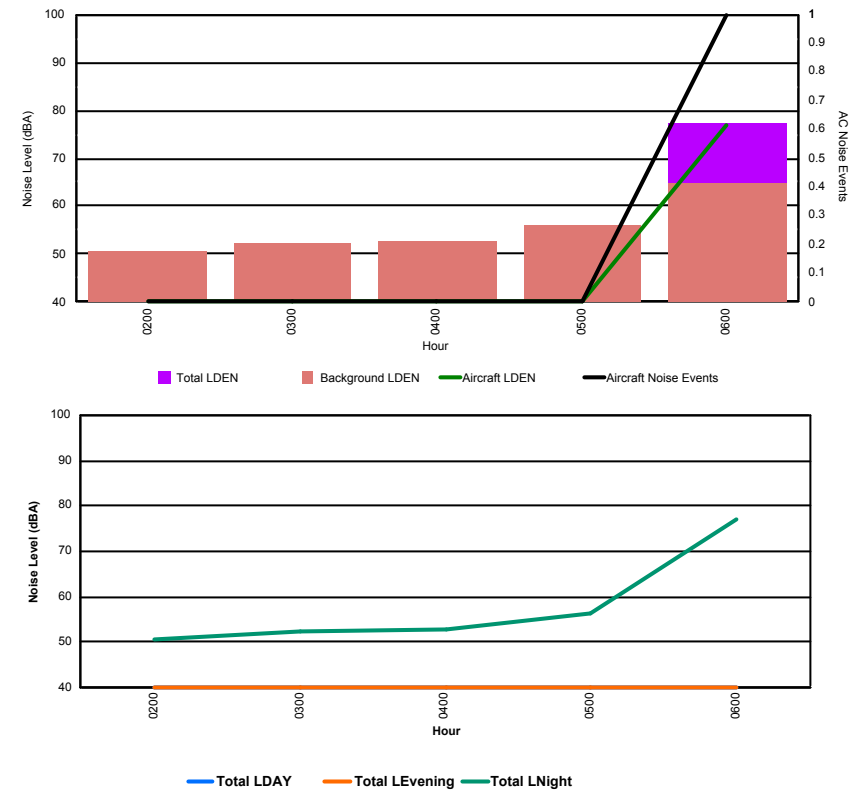


Luxembourg Airport Noise Distribution by Hour

Between 29/10/2017 00:00:00 and 29/10/2017 23:59:59 (Local Time)

Day	Aircraft Events	Total LDEN dB (A)	Aircraft LDEN dB(A)	Background LDEN dB(A)	Total LDay dB(A)	Total LEvening dB(A)	Total LNight dB (A)
30/10/17 2:00	-	50.8	-	50.8	-	-	50.8
30/10/17 3:00	-	52.2	-	52.2	-	-	52.2
30/10/17 4:00	-	52.9	-	52.9	-	-	52.9
30/10/17 5:00	-	56.2	-	56.2	-	-	56.2
30/10/17 6:00	1	77.1	76.8	64.8	-	-	77.1
	1	70.2	69.8	58.9	0.0	0.0	70.2

Location: DVOR NMT # 2

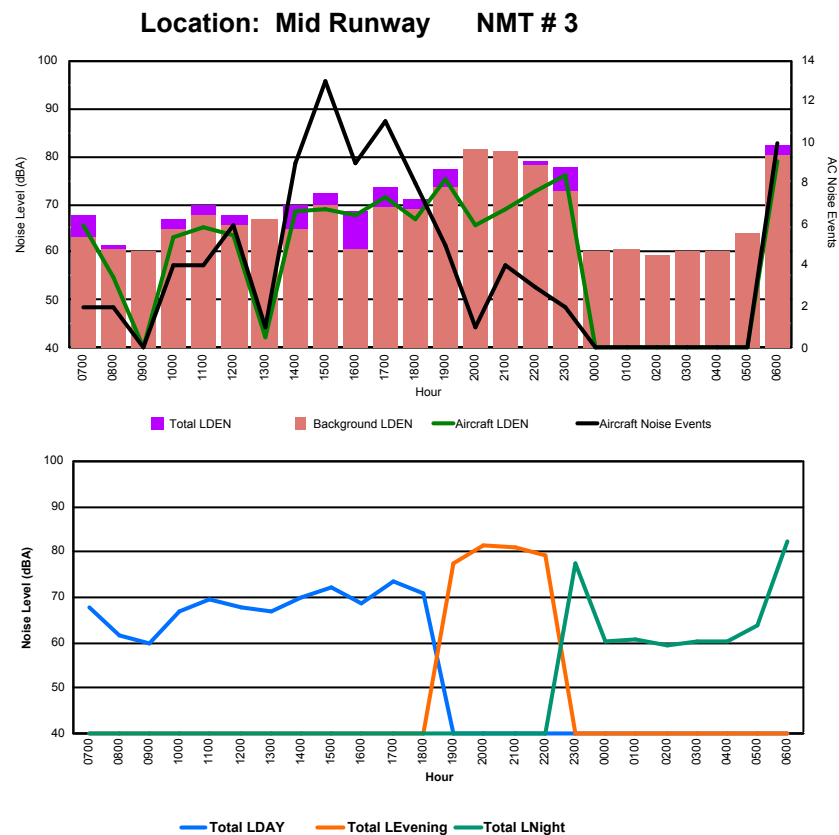




Luxembourg Airport Noise Distribution by Hour

Between 29/10/2017 00:00:00 and 29/10/2017 23:59:59 (Local Time)

Day	Aircraft Events	Total LDEN dB (A)	Aircraft LDEN dB(A)	Background LDEN dB(A)	Total LDay dB(A)	Total LEvening dB(A)	Total LNight dB (A)
29/10/17 7:00	2	67.6	65.8	63.2	67.6	-	-
29/10/17 8:00	2	61.5	54.8	60.6	61.5	-	-
29/10/17 9:00	-	59.9	-	60.0	59.9	-	-
29/10/17 10:00	4	67.0	63.0	64.9	67.0	-	-
29/10/17 11:00	4	69.6	65.2	67.6	69.6	-	-
29/10/17 12:00	6	67.7	63.6	65.8	67.7	-	-
29/10/17 13:00	1	66.9	42.3	67.0	66.9	-	-
29/10/17 14:00	9	69.9	68.4	64.8	69.9	-	-
29/10/17 15:00	13	72.4	69.1	69.7	72.4	-	-
29/10/17 16:00	9	68.5	67.8	60.5	68.5	-	-
29/10/17 17:00	11	73.6	71.6	69.3	73.6	-	-
29/10/17 18:00	8	71.0	66.9	69.1	71.0	-	-
29/10/17 19:00	5	77.4	75.2	73.4	-	77.4	-
29/10/17 20:00	1	81.5	65.6	81.4	-	81.5	-
29/10/17 21:00	4	81.1	68.9	80.9	-	81.1	-
29/10/17 22:00	3	79.1	72.8	78.0	-	79.1	-
29/10/17 23:00	2	77.7	76.1	72.6	-	-	77.7
30/10/17 0:00	-	60.3	-	60.3	-	-	60.3
30/10/17 1:00	-	60.8	-	60.8	-	-	60.8
30/10/17 2:00	-	59.4	-	59.4	-	-	59.4
30/10/17 3:00	-	60.4	-	60.4	-	-	60.4
30/10/17 4:00	-	60.4	-	60.4	-	-	60.4
30/10/17 5:00	-	64.0	-	64.1	-	-	64.0
30/10/17 6:00	10	82.3	78.9	80.2	-	-	82.3
	94	74.9	69.9	73.4	69.3	80.1	74.7





Luxembourg Airport Noise Distribution by Hour

Between 29/10/2017 00:00:00 and 29/10/2017 23:59:59 (Local Time)

Day	Aircraft Events	Total LDEN dB (A)	Aircraft LDEN dB(A)	Background LDEN dB(A)	Total LDay dB(A)	Total LEvening dB(A)	Total LNight dB (A)
30/10/17 2:00	-	63.1	-	62.6	-	-	63.1
30/10/17 3:00	-	63.5	-	63.6	-	-	63.5
30/10/17 4:00	-	65.1	-	65.4	-	-	65.1
30/10/17 5:00	-	68.5	-	69.8	-	-	68.5
30/10/17 6:00	12	79.3	78.8	74.4	-	-	79.3
	12	73.0	71.8	69.5	0.0	0.0	73.0

