

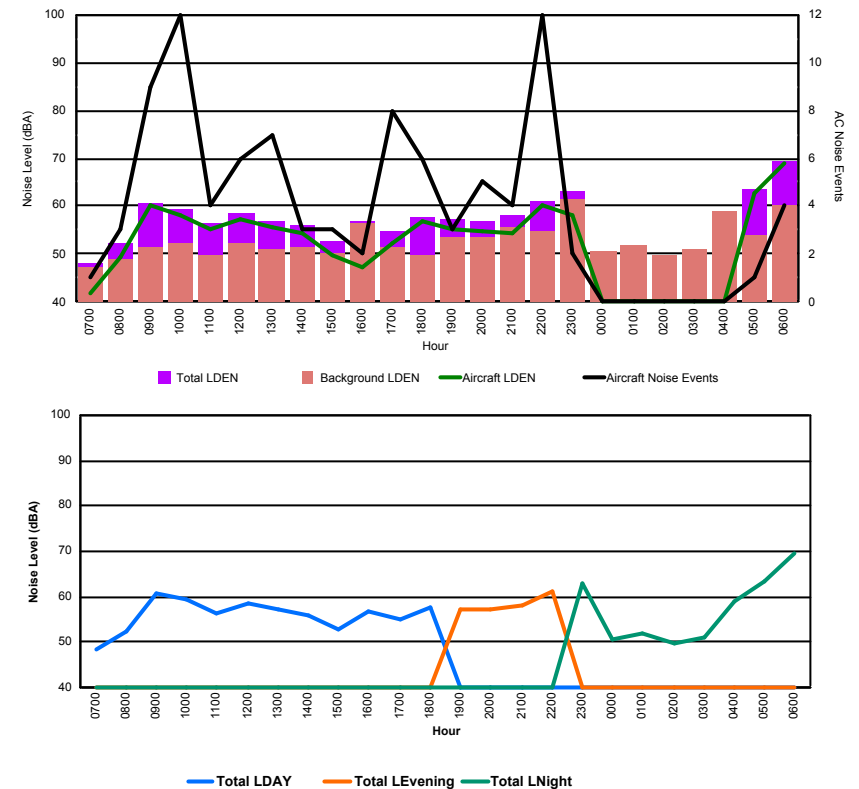


## Luxembourg Airport Noise Distribution by Hour

Between 25/10/2017 00:00:00 and 25/10/2017 23:59:59 (Local Time)

Day	Aircraft Events	Total LDEN dB (A)	Aircraft LDEN dB(A)	Background LDEN dB(A)	Total LDay dB(A)	Total LEvening dB(A)	Total LNight dB (A)
25/10/17 7:00	1	48.3	41.8	47.2	48.3	-	-
25/10/17 8:00	3	52.2	49.4	49.0	52.2	-	-
25/10/17 9:00	9	60.6	60.1	51.3	60.6	-	-
25/10/17 10:00	12	59.2	58.3	52.1	59.2	-	-
25/10/17 11:00	4	56.3	55.4	49.7	56.3	-	-
25/10/17 12:00	6	58.4	57.2	52.3	58.4	-	-
25/10/17 13:00	7	57.0	55.8	51.2	57.0	-	-
25/10/17 14:00	3	56.0	54.3	51.3	56.0	-	-
25/10/17 15:00	3	52.9	49.7	50.1	52.9	-	-
25/10/17 16:00	2	56.7	47.3	56.3	56.7	-	-
25/10/17 17:00	8	54.8	52.2	51.5	54.8	-	-
25/10/17 18:00	6	57.6	56.8	49.7	57.6	-	-
25/10/17 19:00	3	57.2	55.1	53.4	-	57.2	-
25/10/17 20:00	5	57.0	54.7	53.4	-	57.0	-
25/10/17 21:00	4	58.0	54.3	55.7	-	58.0	-
25/10/17 22:00	12	61.2	60.3	54.7	-	61.2	-
25/10/17 23:00	2	63.1	58.0	61.6	-	-	63.1
26/10/17 0:00	-	50.6	-	50.6	-	-	50.6
26/10/17 1:00	-	51.7	-	51.8	-	-	51.7
26/10/17 2:00	-	49.6	-	49.6	-	-	49.6
26/10/17 3:00	-	51.1	-	51.1	-	-	51.1
26/10/17 4:00	-	59.0	-	59.1	-	-	59.0
26/10/17 5:00	1	63.4	62.9	53.9	-	-	63.4
26/10/17 6:00	4	69.5	69.0	60.0	-	-	69.5
	<b>95</b>	<b>59.8</b>	<b>58.4</b>	<b>54.5</b>	<b>56.8</b>	<b>58.7</b>	<b>62.6</b>

Location: Roodt/Syr NMT # 1



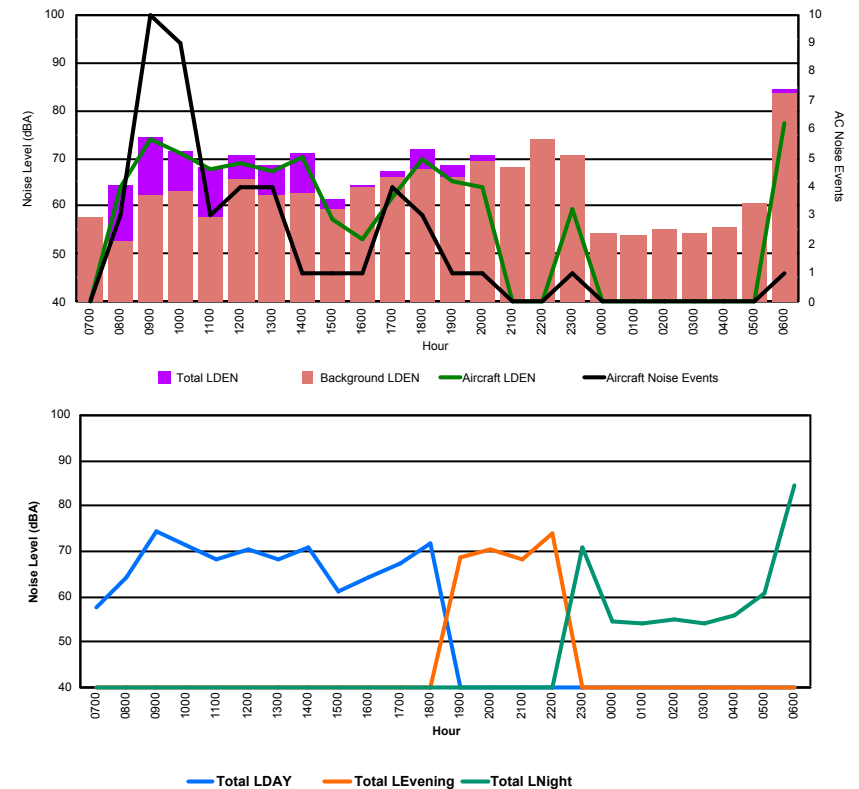


## Luxembourg Airport Noise Distribution by Hour

Between 25/10/2017 00:00:00 and 25/10/2017 23:59:59 (Local Time)

Day	Aircraft Events	Total LDEN dB (A)	Aircraft LDEN dB(A)	Background LDEN dB(A)	Total LDay dB(A)	Total LEvening dB(A)	Total LNight dB (A)
25/10/17 7:00	-	57.8	-	57.9	57.8	-	-
25/10/17 8:00	3	64.2	63.8	52.9	64.2	-	-
25/10/17 9:00	10	74.2	73.9	62.2	74.2	-	-
25/10/17 10:00	9	71.5	70.9	63.2	71.5	-	-
25/10/17 11:00	3	68.2	67.8	57.8	68.2	-	-
25/10/17 12:00	4	70.6	69.0	65.5	70.6	-	-
25/10/17 13:00	4	68.4	67.2	62.4	68.4	-	-
25/10/17 14:00	1	71.0	70.2	62.7	71.0	-	-
25/10/17 15:00	1	61.3	57.1	59.2	61.3	-	-
25/10/17 16:00	1	64.2	53.2	63.9	64.2	-	-
25/10/17 17:00	4	67.4	61.8	66.0	67.4	-	-
25/10/17 18:00	3	71.8	69.7	67.6	71.8	-	-
25/10/17 19:00	1	68.6	65.2	66.0	-	68.6	-
25/10/17 20:00	1	70.6	64.1	69.5	-	70.6	-
25/10/17 21:00	-	68.3	-	68.3	-	68.3	-
25/10/17 22:00	-	73.8	-	73.8	-	73.8	-
25/10/17 23:00	1	70.8	59.3	70.5	-	-	70.8
26/10/17 0:00	-	54.4	-	54.4	-	-	54.4
26/10/17 1:00	-	53.9	-	53.9	-	-	53.9
26/10/17 2:00	-	55.0	-	55.0	-	-	55.0
26/10/17 3:00	-	54.2	-	54.2	-	-	54.2
26/10/17 4:00	-	55.8	-	55.8	-	-	55.8
26/10/17 5:00	-	60.8	-	60.8	-	-	60.8
26/10/17 6:00	1	84.4	77.5	83.4	-	-	84.4
	<b>47</b>	<b>72.7</b>	<b>67.8</b>	<b>71.0</b>	<b>69.5</b>	<b>70.9</b>	<b>75.6</b>

Location: DVOR NMT # 2

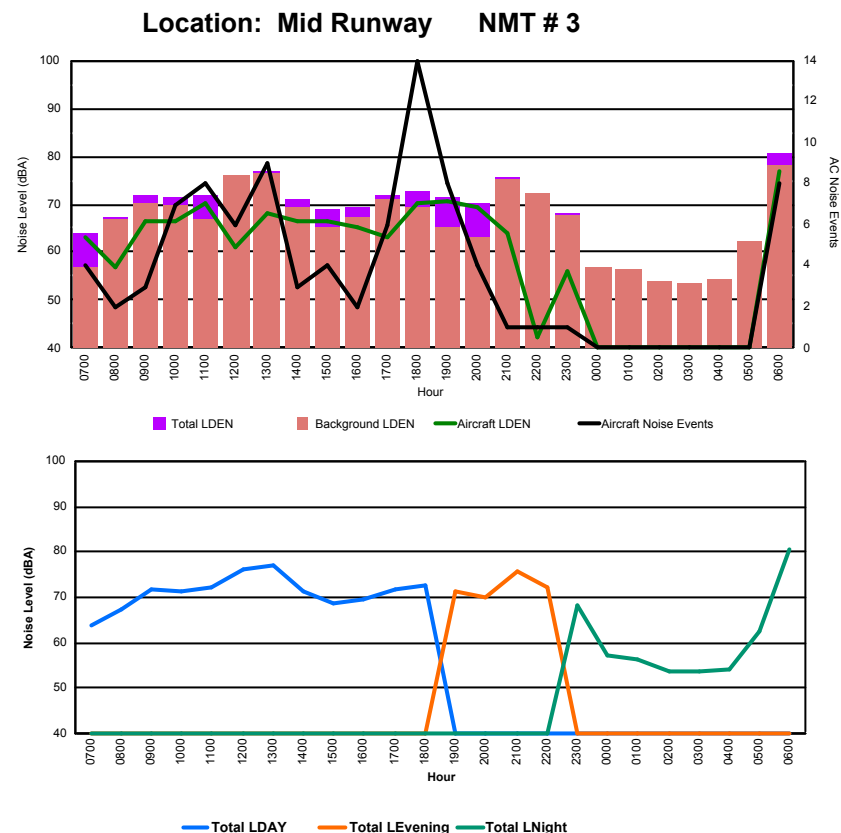




## Luxembourg Airport Noise Distribution by Hour

Between 25/10/2017 00:00:00 and 25/10/2017 23:59:59 (Local Time)

Day	Aircraft Events	Total LDEN dB (A)	Aircraft LDEN dB(A)	Background LDEN dB(A)	Total LDay dB(A)	Total LEvening dB(A)	Total LNight dB (A)
25/10/17 7:00	4	63.9	63.0	57.0	63.9	-	-
25/10/17 8:00	2	67.2	56.9	66.8	67.2	-	-
25/10/17 9:00	3	71.7	66.6	70.2	71.7	-	-
25/10/17 10:00	7	71.3	66.6	69.7	71.3	-	-
25/10/17 11:00	8	72.0	70.3	67.0	72.0	-	-
25/10/17 12:00	6	76.1	61.1	75.9	76.1	-	-
25/10/17 13:00	9	76.9	68.2	76.3	76.9	-	-
25/10/17 14:00	3	71.2	66.3	69.5	71.2	-	-
25/10/17 15:00	4	68.8	66.4	65.0	68.8	-	-
25/10/17 16:00	2	69.5	65.1	67.5	69.5	-	-
25/10/17 17:00	6	71.8	63.3	71.2	71.8	-	-
25/10/17 18:00	14	72.6	70.2	69.2	72.6	-	-
25/10/17 19:00	8	71.5	70.5	65.2	-	71.5	-
25/10/17 20:00	4	70.2	69.2	63.2	-	70.2	-
25/10/17 21:00	1	75.7	64.1	75.4	-	75.7	-
25/10/17 22:00	1	72.1	42.4	72.1	-	72.1	-
25/10/17 23:00	1	68.1	55.9	67.8	-	-	68.1
26/10/17 0:00	-	57.0	-	57.0	-	-	57.0
26/10/17 1:00	-	56.5	-	56.5	-	-	56.5
26/10/17 2:00	-	53.8	-	53.9	-	-	53.8
26/10/17 3:00	-	53.5	-	53.5	-	-	53.5
26/10/17 4:00	-	54.3	-	54.3	-	-	54.3
26/10/17 5:00	-	62.4	-	62.4	-	-	62.4
26/10/17 6:00	8	80.6	76.9	78.3	-	-	80.6
	<b>91</b>	<b>72.3</b>	<b>67.2</b>	<b>70.7</b>	<b>72.3</b>	<b>72.9</b>	<b>71.9</b>





## Luxembourg Airport Noise Distribution by Hour

Between 25/10/2017 00:00:00 and 25/10/2017 23:59:59 (Local Time)

Day	Aircraft Events	Total LDEN dB (A)	Aircraft LDEN dB(A)	Background LDEN dB(A)	Total LDay dB(A)	Total LEvening dB(A)	Total LNight dB (A)
25/10/17 7:00	4	61.8	55.2	64.0	61.8	-	-
25/10/17 8:00	4	62.5	56.8	63.5	62.5	-	-
25/10/17 9:00	4	64.9	62.7	61.1	64.9	-	-
25/10/17 10:00	7	63.6	59.4	61.7	63.6	-	-
25/10/17 11:00	12	65.9	64.7	60.2	65.9	-	-
25/10/17 12:00	3	60.4	48.8	60.2	60.4	-	-
25/10/17 13:00	9	68.1	67.4	60.1	68.1	-	-
25/10/17 14:00	7	68.3	67.4	60.9	68.3	-	-
25/10/17 15:00	7	65.7	64.3	60.2	65.7	-	-
25/10/17 16:00	4	63.4	60.5	60.5	63.4	-	-
25/10/17 17:00	7	68.7	68.0	60.3	68.7	-	-
25/10/17 18:00	12	67.7	66.8	61.0	67.7	-	-
25/10/17 19:00	3	68.0	63.8	66.0	-	68.0	-
25/10/17 20:00	3	67.6	64.2	65.0	-	67.6	-
25/10/17 21:00	3	73.8	73.2	64.8	-	73.8	-
25/10/17 22:00	1	67.3	63.1	65.5	-	67.3	-
25/10/17 23:00	1	67.6	51.2	67.5	-	-	67.6
26/10/17 0:00	-	64.4	-	65.4	-	-	64.4
26/10/17 1:00	-	63.9	-	64.6	-	-	63.9
26/10/17 2:00	-	62.7	-	63.2	-	-	62.7
26/10/17 3:00	-	64.5	-	64.8	-	-	64.5
26/10/17 4:00	-	67.7	-	68.7	-	-	67.7
26/10/17 5:00	-	70.6	-	72.2	-	-	70.6
26/10/17 6:00	11	77.5	75.9	76.6	-	-	77.5
	<b>102</b>	<b>68.7</b>	<b>66.2</b>	<b>66.9</b>	<b>65.8</b>	<b>70.2</b>	<b>70.5</b>

Location: NDB-Hamm NMT # 4

