

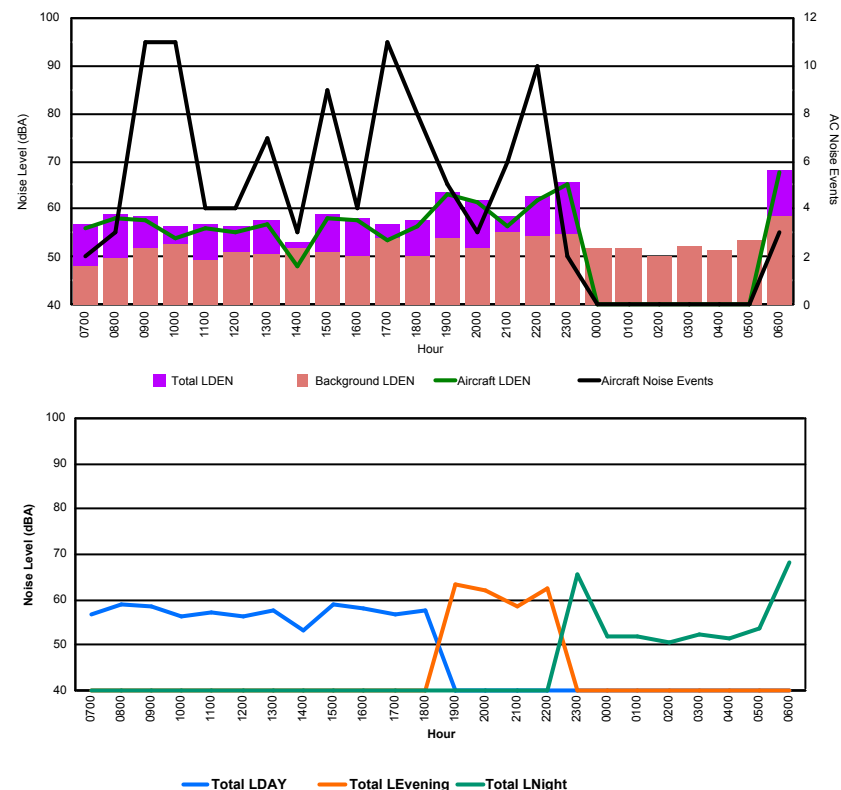


## Luxembourg Airport Noise Distribution by Hour

Between 23/10/2017 00:00:00 and 23/10/2017 23:59:59 (Local Time)

Day	Aircraft Events	Total LDEN dB (A)	Aircraft LDEN dB(A)	Background LDEN dB(A)	Total LDay dB(A)	Total LEvening dB(A)	Total LNight dB (A)
23/10/17 7:00	2	56.7	56.0	48.2	56.7	-	-
23/10/17 8:00	3	58.8	58.2	49.9	58.8	-	-
23/10/17 9:00	11	58.6	57.7	51.8	58.6	-	-
23/10/17 10:00	11	56.3	54.1	52.5	56.3	-	-
23/10/17 11:00	4	57.0	56.2	49.5	57.0	-	-
23/10/17 12:00	4	56.5	55.2	51.2	56.5	-	-
23/10/17 13:00	7	57.6	56.7	50.6	57.6	-	-
23/10/17 14:00	3	53.2	48.0	51.7	53.2	-	-
23/10/17 15:00	9	59.0	58.3	51.2	59.0	-	-
23/10/17 16:00	4	58.3	57.7	50.0	58.3	-	-
23/10/17 17:00	11	56.7	53.6	54.1	56.7	-	-
23/10/17 18:00	8	57.5	56.6	50.3	57.5	-	-
23/10/17 19:00	5	63.5	63.0	53.8	-	63.5	-
23/10/17 20:00	3	62.0	61.6	51.7	-	62.0	-
23/10/17 21:00	6	58.7	56.3	55.1	-	58.7	-
23/10/17 22:00	10	62.7	62.0	54.4	-	62.7	-
23/10/17 23:00	2	65.6	65.2	54.7	-	-	65.6
24/10/17 0:00	-	51.9	-	51.9	-	-	51.9
24/10/17 1:00	-	51.8	-	51.9	-	-	51.8
24/10/17 2:00	-	50.4	-	50.4	-	-	50.4
24/10/17 3:00	-	52.2	-	52.3	-	-	52.2
24/10/17 4:00	-	51.6	-	51.6	-	-	51.6
24/10/17 5:00	-	53.6	-	53.6	-	-	53.6
24/10/17 6:00	3	68.3	67.8	58.6	-	-	68.3
	<b>106</b>	<b>60.1</b>	<b>59.2</b>	<b>52.8</b>	<b>57.4</b>	<b>62.1</b>	<b>61.5</b>

Location: Roodt/Syr NMT # 1



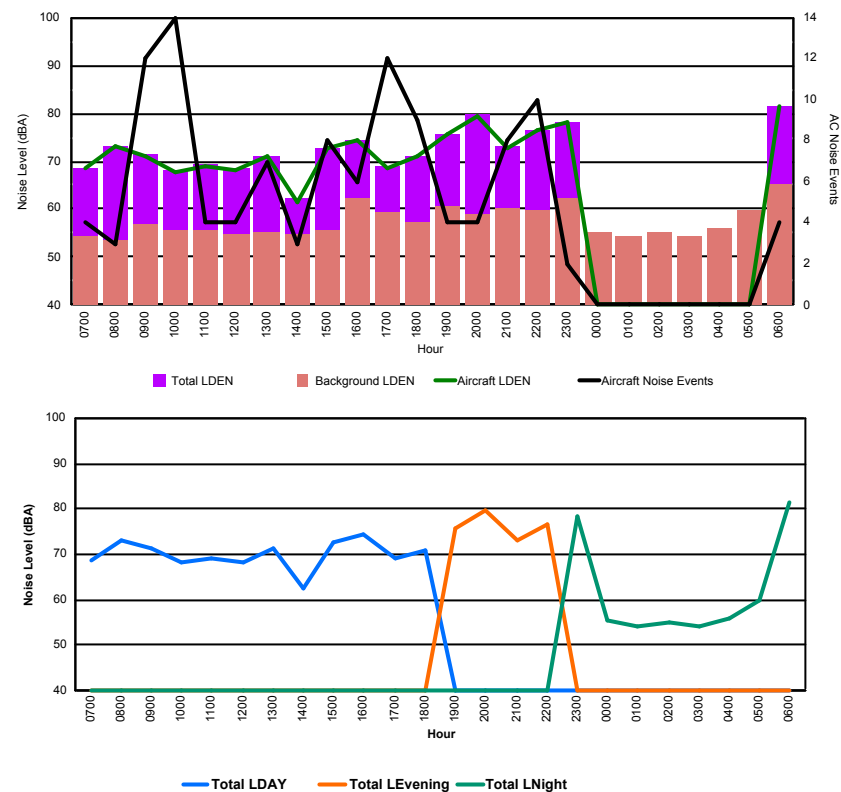


## Luxembourg Airport Noise Distribution by Hour

Between 23/10/2017 00:00:00 and 23/10/2017 23:59:59 (Local Time)

Day	Aircraft Events	Total LDEN dB (A)	Aircraft LDEN dB(A)	Background LDEN dB(A)	Total LDay dB(A)	Total LEvening dB(A)	Total LNight dB (A)
23/10/17 7:00	4	68.6	68.5	54.4	68.6	-	-
23/10/17 8:00	3	73.0	73.0	53.5	73.0	-	-
23/10/17 9:00	12	71.3	71.2	56.7	71.3	-	-
23/10/17 10:00	14	68.2	67.9	55.7	68.2	-	-
23/10/17 11:00	4	69.3	69.0	55.8	69.3	-	-
23/10/17 12:00	4	68.4	68.2	54.6	68.4	-	-
23/10/17 13:00	7	71.2	71.2	55.3	71.2	-	-
23/10/17 14:00	3	62.3	61.5	54.8	62.3	-	-
23/10/17 15:00	8	72.7	72.6	55.6	72.7	-	-
23/10/17 16:00	6	74.5	74.2	62.5	74.5	-	-
23/10/17 17:00	12	69.1	68.7	59.2	69.1	-	-
23/10/17 18:00	9	71.1	70.9	57.2	71.1	-	-
23/10/17 19:00	4	75.8	75.7	60.5	-	75.8	-
23/10/17 20:00	4	79.6	79.5	59.1	-	79.6	-
23/10/17 21:00	8	73.0	72.8	60.3	-	73.0	-
23/10/17 22:00	10	76.5	76.5	59.8	-	76.5	-
23/10/17 23:00	2	78.3	78.1	62.5	-	-	78.3
24/10/17 0:00	-	55.3	-	55.3	-	-	55.3
24/10/17 1:00	-	54.2	-	54.2	-	-	54.2
24/10/17 2:00	-	55.0	-	55.0	-	-	55.0
24/10/17 3:00	-	54.2	-	54.2	-	-	54.2
24/10/17 4:00	-	55.9	-	55.9	-	-	55.9
24/10/17 5:00	-	59.8	-	59.8	-	-	59.8
24/10/17 6:00	4	81.5	81.4	65.2	-	-	81.5
	<b>118</b>	<b>73.6</b>	<b>73.5</b>	<b>58.7</b>	<b>70.8</b>	<b>76.9</b>	<b>74.2</b>

Location: DVOR NMT # 2

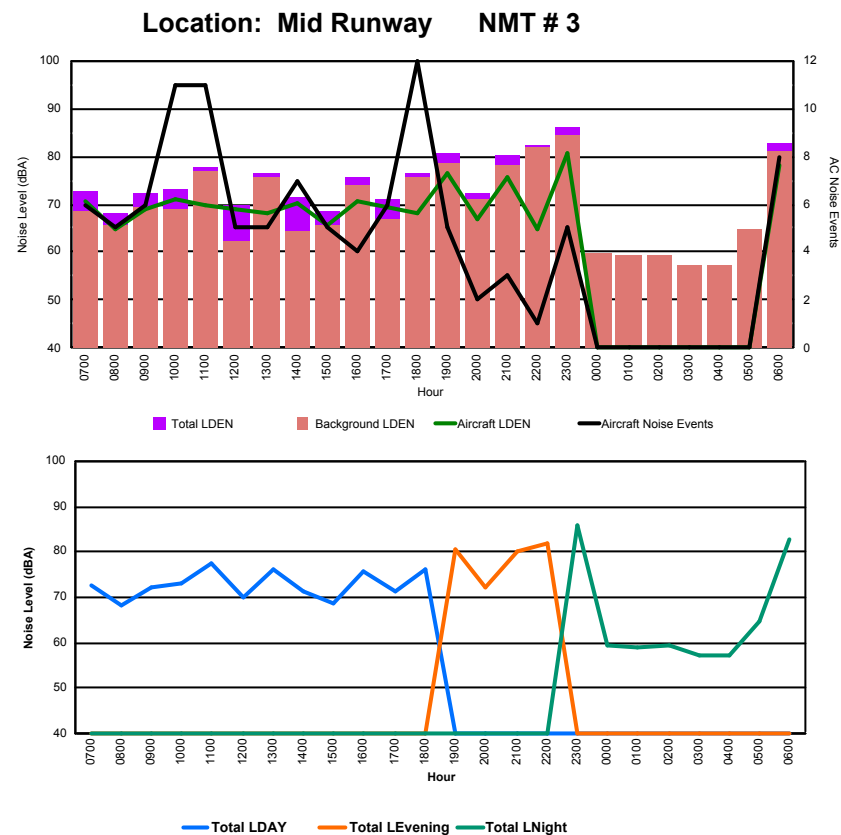




## Luxembourg Airport Noise Distribution by Hour

Between 23/10/2017 00:00:00 and 23/10/2017 23:59:59 (Local Time)

Day	Aircraft Events	Total LDEN dB (A)	Aircraft LDEN dB(A)	Background LDEN dB(A)	Total LDay dB(A)	Total LEvening dB(A)	Total LNight dB (A)
23/10/17 7:00	6	72.8	70.7	68.7	72.8	-	-
23/10/17 8:00	5	68.2	64.7	65.8	68.2	-	-
23/10/17 9:00	6	72.2	69.1	69.4	72.2	-	-
23/10/17 10:00	11	73.2	71.2	69.0	73.2	-	-
23/10/17 11:00	11	77.6	70.0	76.8	77.6	-	-
23/10/17 12:00	5	69.8	68.9	62.5	69.8	-	-
23/10/17 13:00	5	76.4	68.2	75.7	76.4	-	-
23/10/17 14:00	7	71.4	70.4	64.5	71.4	-	-
23/10/17 15:00	5	68.7	65.8	65.8	68.7	-	-
23/10/17 16:00	4	75.6	70.8	73.8	75.6	-	-
23/10/17 17:00	6	71.2	69.3	66.9	71.2	-	-
23/10/17 18:00	12	76.3	68.1	75.6	76.3	-	-
23/10/17 19:00	5	80.5	76.4	78.4	-	80.5	-
23/10/17 20:00	2	72.2	67.0	70.9	-	72.2	-
23/10/17 21:00	3	80.1	75.8	78.1	-	80.1	-
23/10/17 22:00	1	82.1	64.8	82.0	-	82.1	-
23/10/17 23:00	5	85.9	80.6	84.4	-	-	85.9
24/10/17 0:00	-	59.5	-	59.6	-	-	59.5
24/10/17 1:00	-	59.1	-	59.2	-	-	59.1
24/10/17 2:00	-	59.2	-	59.3	-	-	59.2
24/10/17 3:00	-	57.4	-	57.4	-	-	57.4
24/10/17 4:00	-	57.2	-	57.2	-	-	57.2
24/10/17 5:00	-	64.5	-	64.6	-	-	64.5
24/10/17 6:00	8	82.8	78.3	80.9	-	-	82.8
	<b>107</b>	<b>77.2</b>	<b>71.9</b>	<b>75.7</b>	<b>73.8</b>	<b>79.9</b>	<b>78.6</b>





## Luxembourg Airport Noise Distribution by Hour

Between 23/10/2017 00:00:00 and 23/10/2017 23:59:59 (Local Time)

Day	Aircraft Events	Total LDEN dB (A)	Aircraft LDEN dB(A)	Background LDEN dB(A)	Total LDay dB(A)	Total LEvening dB(A)	Total LNight dB (A)
23/10/17 7:00	8	68.3	67.6	69.7	68.3	-	-
23/10/17 8:00	6	68.0	59.9	70.7	68.0	-	-
23/10/17 9:00	3	68.5	67.6	61.2	68.5	-	-
23/10/17 10:00	10	70.1	69.6	60.8	70.1	-	-
23/10/17 11:00	9	68.1	67.3	60.5	68.1	-	-
23/10/17 12:00	7	68.3	67.5	60.4	68.3	-	-
23/10/17 13:00	6	68.8	67.9	61.9	68.8	-	-
23/10/17 14:00	10	67.6	66.4	62.1	67.6	-	-
23/10/17 15:00	4	62.0	54.3	61.4	62.0	-	-
23/10/17 16:00	6	67.9	66.9	61.2	67.9	-	-
23/10/17 17:00	7	63.0	59.7	60.4	63.0	-	-
23/10/17 18:00	10	64.6	61.9	61.6	64.6	-	-
23/10/17 19:00	7	68.7	66.3	65.3	-	68.7	-
23/10/17 20:00	2	64.4	55.0	63.9	-	64.4	-
23/10/17 21:00	5	75.9	75.7	63.0	-	75.9	-
23/10/17 22:00	1	63.5	57.0	62.5	-	63.5	-
23/10/17 23:00	5	78.5	78.3	65.8	-	-	78.5
24/10/17 0:00	-	63.3	-	63.9	-	-	63.3
24/10/17 1:00	-	62.3	-	62.7	-	-	62.3
24/10/17 2:00	-	62.5	-	63.1	-	-	62.5
24/10/17 3:00	-	64.6	-	64.8	-	-	64.6
24/10/17 4:00	-	65.6	-	66.0	-	-	65.6
24/10/17 5:00	-	69.7	-	71.1	-	-	69.7
24/10/17 6:00	10	76.7	75.3	79.9	-	-	76.7
	<b>116</b>	<b>70.3</b>	<b>69.1</b>	<b>68.5</b>	<b>67.6</b>	<b>71.1</b>	<b>72.4</b>

