

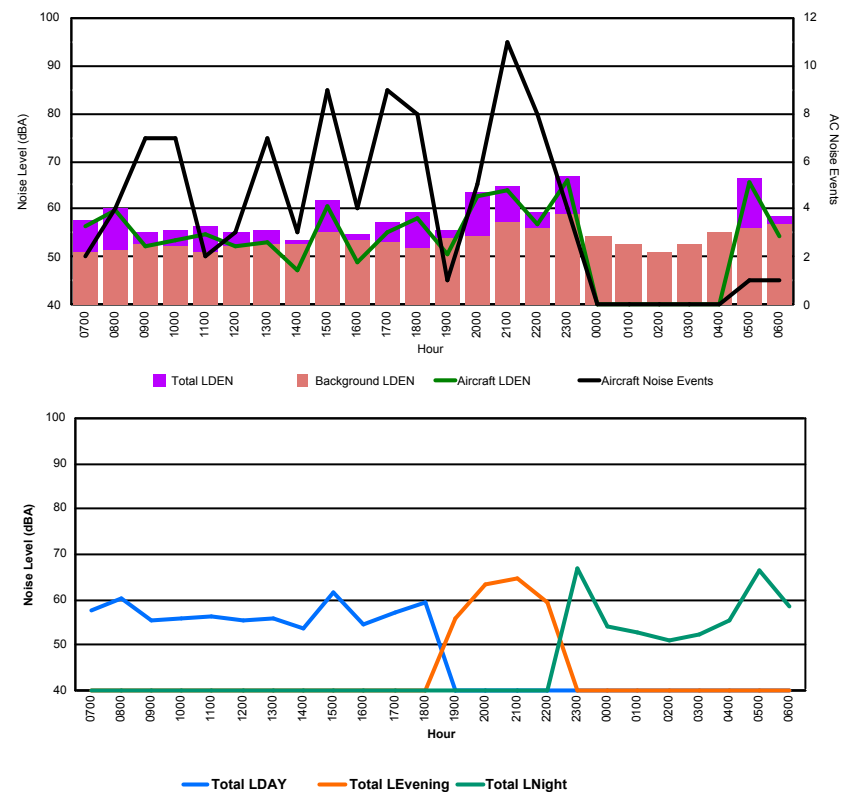


## Luxembourg Airport Noise Distribution by Hour

Between 20/10/2017 00:00:00 and 20/10/2017 23:59:59 (Local Time)

Day	Aircraft Events	Total LDEN dB (A)	Aircraft LDEN dB(A)	Background LDEN dB(A)	Total LDay dB(A)	Total LEvening dB(A)	Total LNight dB (A)
20/10/17 7:00	2	57.5	56.5	51.2	57.5	-	-
20/10/17 8:00	4	60.3	59.7	51.3	60.3	-	-
20/10/17 9:00	7	55.4	52.2	52.8	55.4	-	-
20/10/17 10:00	7	55.7	53.4	52.1	55.7	-	-
20/10/17 11:00	2	56.4	54.9	51.2	56.4	-	-
20/10/17 12:00	3	55.3	52.4	52.4	55.3	-	-
20/10/17 13:00	7	55.8	53.2	52.6	55.8	-	-
20/10/17 14:00	3	53.6	47.2	52.6	53.6	-	-
20/10/17 15:00	9	61.7	60.7	55.2	61.7	-	-
20/10/17 16:00	4	54.7	49.1	53.5	54.7	-	-
20/10/17 17:00	9	57.1	55.0	53.0	57.1	-	-
20/10/17 18:00	8	59.2	58.3	52.0	59.2	-	-
20/10/17 19:00	1	55.7	50.8	54.0	-	55.7	-
20/10/17 20:00	5	63.4	62.9	54.2	-	63.4	-
20/10/17 21:00	11	64.9	64.1	57.4	-	64.9	-
20/10/17 22:00	8	59.5	57.0	56.2	-	59.5	-
20/10/17 23:00	4	67.0	66.2	59.0	-	-	67.0
21/10/17 0:00	-	54.1	-	54.2	-	-	54.1
21/10/17 1:00	-	52.7	-	52.8	-	-	52.7
21/10/17 2:00	-	50.9	-	50.9	-	-	50.9
21/10/17 3:00	-	52.5	-	52.5	-	-	52.5
21/10/17 4:00	-	55.4	-	55.4	-	-	55.4
21/10/17 5:00	1	66.3	65.8	55.9	-	-	66.3
21/10/17 6:00	1	58.7	54.4	56.8	-	-	58.7
	<b>96</b>	<b>60.1</b>	<b>58.8</b>	<b>54.3</b>	<b>57.6</b>	<b>62.1</b>	<b>61.4</b>

Location: Roodt/Syr NMT # 1



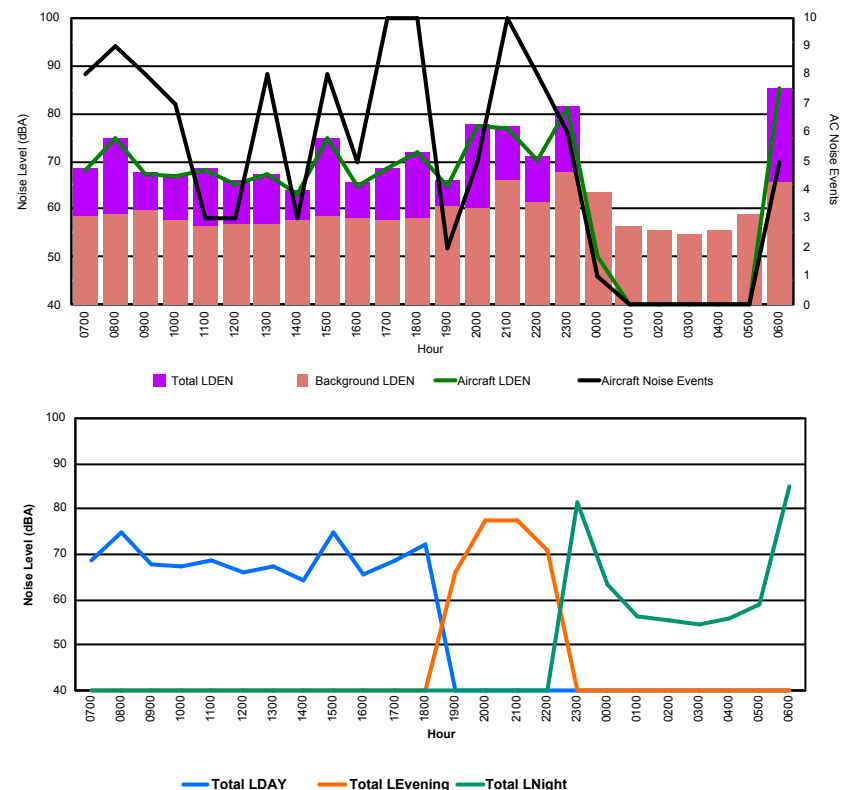


## Luxembourg Airport Noise Distribution by Hour

Between 20/10/2017 00:00:00 and 20/10/2017 23:59:59 (Local Time)

Day	Aircraft Events	Total LDEN dB (A)	Aircraft LDEN dB(A)	Background LDEN dB(A)	Total LDay dB(A)	Total LEvening dB(A)	Total LNight dB (A)
20/10/17 7:00	8	68.7	68.3	58.7	68.7	-	-
20/10/17 8:00	9	74.7	74.6	59.0	74.7	-	-
20/10/17 9:00	8	67.7	67.1	59.7	67.7	-	-
20/10/17 10:00	7	67.3	66.8	57.5	67.3	-	-
20/10/17 11:00	3	68.6	68.3	56.6	68.6	-	-
20/10/17 12:00	3	65.9	65.3	56.9	65.9	-	-
20/10/17 13:00	8	67.5	67.2	56.7	67.5	-	-
20/10/17 14:00	3	64.1	63.0	57.5	64.1	-	-
20/10/17 15:00	8	75.0	74.9	58.7	75.0	-	-
20/10/17 16:00	5	65.7	64.9	58.2	65.7	-	-
20/10/17 17:00	10	68.7	68.4	57.7	68.7	-	-
20/10/17 18:00	10	72.0	71.8	58.3	72.0	-	-
20/10/17 19:00	2	66.2	64.8	60.7	-	66.2	-
20/10/17 20:00	5	77.6	77.5	60.1	-	77.6	-
20/10/17 21:00	10	77.3	77.0	65.9	-	77.3	-
20/10/17 22:00	8	70.9	70.4	61.4	-	70.9	-
20/10/17 23:00	6	81.3	81.1	67.6	-	-	81.3
21/10/17 0:00	1	63.5	50.4	63.5	-	-	63.5
21/10/17 1:00	-	56.5	-	56.5	-	-	56.5
21/10/17 2:00	-	55.5	-	55.5	-	-	55.5
21/10/17 3:00	-	54.6	-	54.6	-	-	54.6
21/10/17 4:00	-	55.8	-	55.8	-	-	55.8
21/10/17 5:00	-	59.1	-	59.1	-	-	59.1
21/10/17 6:00	5	85.2	85.1	65.6	-	-	85.2
	<b>119</b>	<b>74.8</b>	<b>74.6</b>	<b>60.8</b>	<b>70.2</b>	<b>75.0</b>	<b>77.7</b>

Location: DVOR NMT # 2

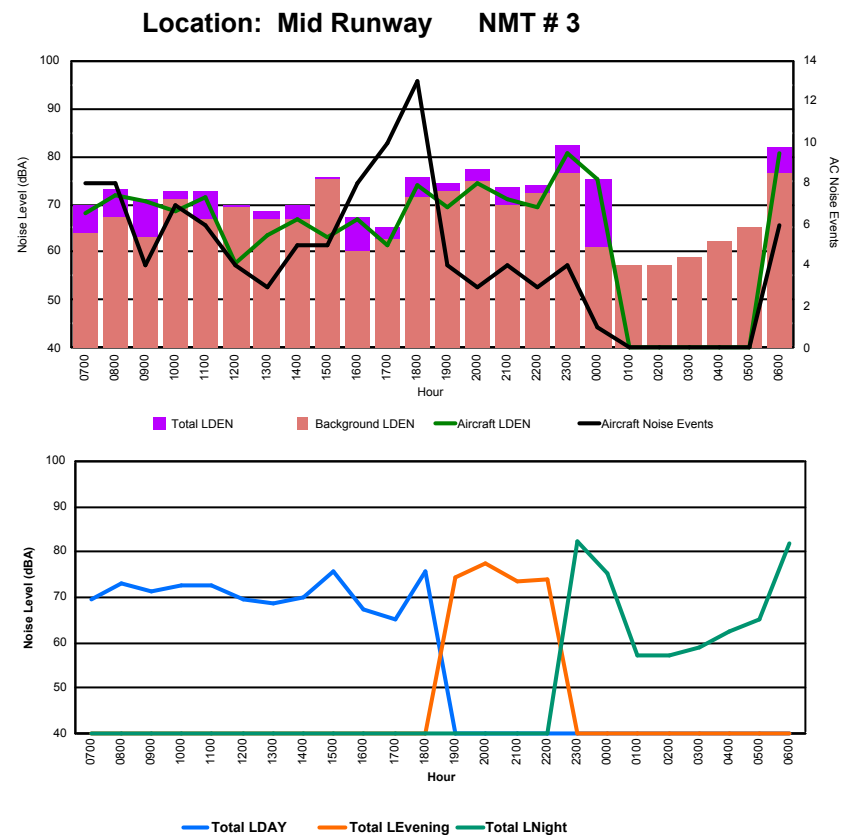




## Luxembourg Airport Noise Distribution by Hour

Between 20/10/2017 00:00:00 and 20/10/2017 23:59:59 (Local Time)

Day	Aircraft Events	Total LDEN dB (A)	Aircraft LDEN dB(A)	Background LDEN dB(A)	Total LDay dB(A)	Total LEvening dB(A)	Total LNight dB (A)
20/10/17 7:00	8	69.7	68.3	64.1	69.7	-	-
20/10/17 8:00	8	73.2	72.0	67.1	73.2	-	-
20/10/17 9:00	4	71.2	70.5	63.2	71.2	-	-
20/10/17 10:00	7	72.8	68.4	70.9	72.8	-	-
20/10/17 11:00	6	72.7	71.5	66.9	72.7	-	-
20/10/17 12:00	4	69.7	57.7	69.4	69.7	-	-
20/10/17 13:00	3	68.5	63.7	66.8	68.5	-	-
20/10/17 14:00	5	69.9	66.9	66.9	69.9	-	-
20/10/17 15:00	5	75.6	63.0	75.3	75.6	-	-
20/10/17 16:00	8	67.5	66.7	60.3	67.5	-	-
20/10/17 17:00	10	65.2	61.6	62.8	65.2	-	-
20/10/17 18:00	13	75.8	74.0	71.4	75.8	-	-
20/10/17 19:00	4	74.3	69.3	72.6	-	74.3	-
20/10/17 20:00	3	77.5	74.3	74.7	-	77.5	-
20/10/17 21:00	4	73.5	71.1	69.9	-	73.5	-
20/10/17 22:00	3	74.0	69.2	72.3	-	74.0	-
20/10/17 23:00	4	82.2	80.8	76.6	-	-	82.2
21/10/17 0:00	1	75.2	75.1	60.9	-	-	75.2
21/10/17 1:00	-	57.1	-	57.1	-	-	57.1
21/10/17 2:00	-	57.1	-	57.2	-	-	57.1
21/10/17 3:00	-	58.9	-	58.9	-	-	58.9
21/10/17 4:00	-	62.5	-	62.5	-	-	62.5
21/10/17 5:00	-	65.3	-	65.4	-	-	65.3
21/10/17 6:00	6	82.0	80.5	76.6	-	-	82.0
	<b>106</b>	<b>74.6</b>	<b>72.4</b>	<b>70.5</b>	<b>72.0</b>	<b>75.1</b>	<b>76.6</b>





## Luxembourg Airport Noise Distribution by Hour

Between 20/10/2017 00:00:00 and 20/10/2017 23:59:59 (Local Time)

Day	Aircraft Events	Total LDEN dB (A)	Aircraft LDEN dB(A)	Background LDEN dB(A)	Total LDay dB(A)	Total LEvening dB(A)	Total LNight dB (A)
20/10/17 7:00	7	65.5	62.1	66.5	65.5	-	-
20/10/17 8:00	10	69.0	67.9	72.6	69.0	-	-
20/10/17 9:00	2	66.6	64.9	62.1	66.6	-	-
20/10/17 10:00	10	67.4	65.9	62.8	67.4	-	-
20/10/17 11:00	7	66.5	64.8	62.0	66.5	-	-
20/10/17 12:00	5	68.7	67.7	61.6	68.7	-	-
20/10/17 13:00	2	63.3	59.2	61.3	63.3	-	-
20/10/17 14:00	8	67.1	65.6	61.9	67.1	-	-
20/10/17 15:00	4	62.5	55.6	61.8	62.5	-	-
20/10/17 16:00	6	62.9	59.5	60.4	62.9	-	-
20/10/17 17:00	6	61.2	54.4	60.4	61.2	-	-
20/10/17 18:00	13	71.6	71.4	60.4	71.6	-	-
20/10/17 19:00	6	68.2	64.8	65.7	-	68.2	-
20/10/17 20:00	4	70.3	68.8	64.9	-	70.3	-
20/10/17 21:00	3	67.3	64.1	64.7	-	67.3	-
20/10/17 22:00	3	67.4	63.5	65.6	-	67.4	-
20/10/17 23:00	4	80.1	79.7	68.5	-	-	80.1
21/10/17 0:00	1	74.3	73.4	68.6	-	-	74.3
21/10/17 1:00	-	66.4	-	67.7	-	-	66.4
21/10/17 2:00	-	64.5	-	65.5	-	-	64.5
21/10/17 3:00	-	64.1	-	64.2	-	-	64.1
21/10/17 4:00	-	64.9	-	65.0	-	-	64.9
21/10/17 5:00	-	67.4	-	68.2	-	-	67.4
21/10/17 6:00	9	75.4	74.5	69.9	-	-	75.4
	<b>110</b>	<b>70.5</b>	<b>69.3</b>	<b>66.0</b>	<b>67.0</b>	<b>68.5</b>	<b>73.6</b>

