

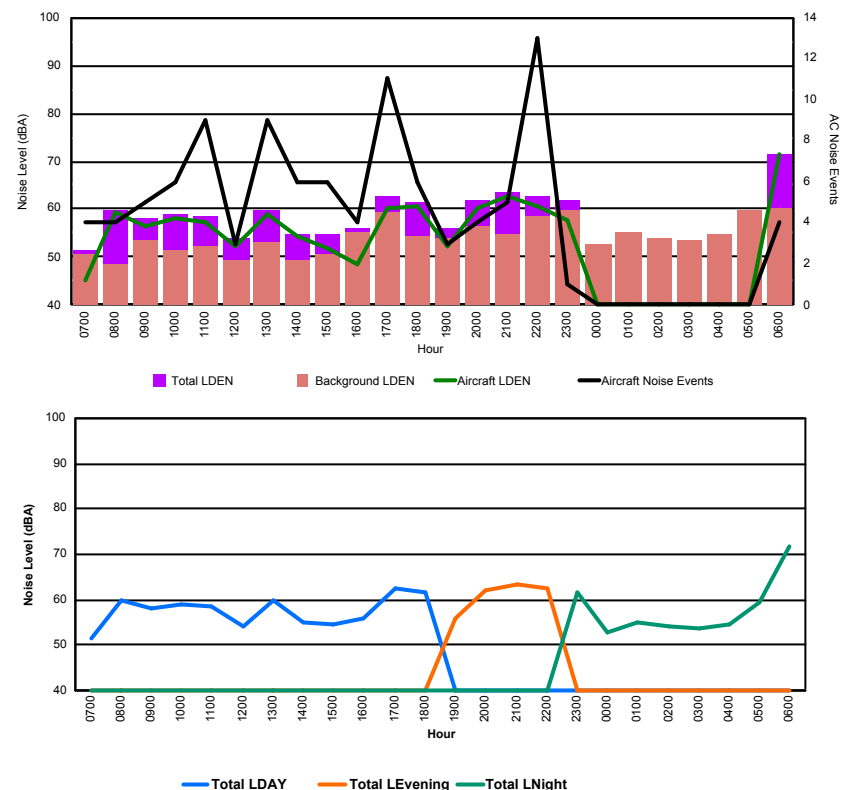


## Luxembourg Airport Noise Distribution by Hour

Between 19/10/2017 00:00:00 and 19/10/2017 23:59:59 (Local Time)

Day	Aircraft Events	Total LDEN dB (A)	Aircraft LDEN dB(A)	Background LDEN dB(A)	Total LDay dB(A)	Total LEvening dB(A)	Total LNight dB (A)
19/10/17 7:00	4	51.6	45.0	50.7	51.6	-	-
19/10/17 8:00	4	59.7	59.3	48.6	59.7	-	-
19/10/17 9:00	5	58.2	56.4	53.6	58.2	-	-
19/10/17 10:00	6	59.0	58.3	51.3	59.0	-	-
19/10/17 11:00	9	58.5	57.4	52.2	58.5	-	-
19/10/17 12:00	3	54.0	52.2	49.5	54.0	-	-
19/10/17 13:00	9	59.9	58.9	53.1	59.9	-	-
19/10/17 14:00	6	54.9	54.4	49.3	54.9	-	-
19/10/17 15:00	6	54.7	51.7	50.5	54.7	-	-
19/10/17 16:00	4	55.9	48.4	55.1	55.9	-	-
19/10/17 17:00	11	62.6	60.1	59.5	62.6	-	-
19/10/17 18:00	6	61.5	60.7	54.3	61.5	-	-
19/10/17 19:00	3	56.0	52.2	53.8	-	56.0	-
19/10/17 20:00	4	61.9	60.4	56.6	-	61.9	-
19/10/17 21:00	5	63.5	62.9	54.6	-	63.5	-
19/10/17 22:00	13	62.7	60.7	58.7	-	62.7	-
19/10/17 23:00	1	61.8	57.8	59.7	-	-	61.8
20/10/17 0:00	-	52.6	-	52.6	-	-	52.6
20/10/17 1:00	-	54.9	-	55.0	-	-	54.9
20/10/17 2:00	-	53.9	-	53.9	-	-	53.9
20/10/17 3:00	-	53.6	-	53.6	-	-	53.6
20/10/17 4:00	-	54.7	-	54.7	-	-	54.7
20/10/17 5:00	-	59.6	-	59.7	-	-	59.6
20/10/17 6:00	4	71.6	71.3	60.2	-	-	71.6
	<b>103</b>	<b>61.4</b>	<b>60.1</b>	<b>55.5</b>	<b>58.6</b>	<b>61.8</b>	<b>63.6</b>

Location: Roodt/Syr NMT # 1



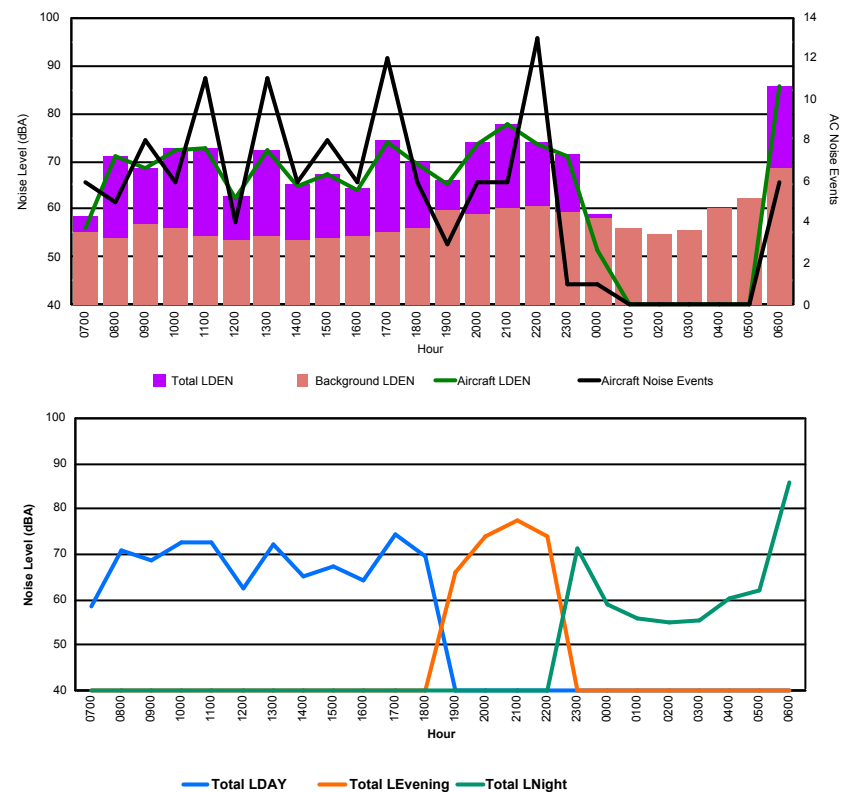


## Luxembourg Airport Noise Distribution by Hour

Between 19/10/2017 00:00:00 and 19/10/2017 23:59:59 (Local Time)

Day	Aircraft Events	Total LDEN dB (A)	Aircraft LDEN dB(A)	Background LDEN dB(A)	Total LDay dB(A)	Total LEvening dB(A)	Total LNight dB (A)
19/10/17 7:00	6	58.6	56.2	55.1	58.6	-	-
19/10/17 8:00	5	71.1	71.0	53.8	71.1	-	-
19/10/17 9:00	8	68.6	68.4	56.8	68.6	-	-
19/10/17 10:00	6	72.6	72.5	56.2	72.6	-	-
19/10/17 11:00	11	72.6	72.6	54.4	72.6	-	-
19/10/17 12:00	4	62.7	62.2	53.7	62.7	-	-
19/10/17 13:00	11	72.1	72.1	54.2	72.1	-	-
19/10/17 14:00	6	65.0	64.6	53.7	65.0	-	-
19/10/17 15:00	8	67.5	67.3	53.8	67.5	-	-
19/10/17 16:00	6	64.2	63.8	54.2	64.2	-	-
19/10/17 17:00	12	74.2	74.1	55.1	74.2	-	-
19/10/17 18:00	6	69.6	69.4	56.1	69.6	-	-
19/10/17 19:00	3	66.2	65.1	59.6	-	66.2	-
19/10/17 20:00	6	73.9	73.7	59.1	-	73.9	-
19/10/17 21:00	6	77.7	77.6	60.0	-	77.7	-
19/10/17 22:00	13	73.9	73.7	60.8	-	73.9	-
19/10/17 23:00	1	71.3	71.0	59.2	-	-	71.3
20/10/17 0:00	1	58.9	51.3	58.2	-	-	58.9
20/10/17 1:00	-	56.1	-	56.1	-	-	56.1
20/10/17 2:00	-	54.8	-	54.8	-	-	54.8
20/10/17 3:00	-	55.5	-	55.6	-	-	55.5
20/10/17 4:00	-	60.4	-	60.4	-	-	60.4
20/10/17 5:00	-	62.1	-	62.1	-	-	62.1
20/10/17 6:00	6	85.8	85.8	68.4	-	-	85.8
	<b>125</b>	<b>74.2</b>	<b>74.1</b>	<b>59.2</b>	<b>70.1</b>	<b>74.5</b>	<b>77.0</b>

Location: DVOR NMT # 2

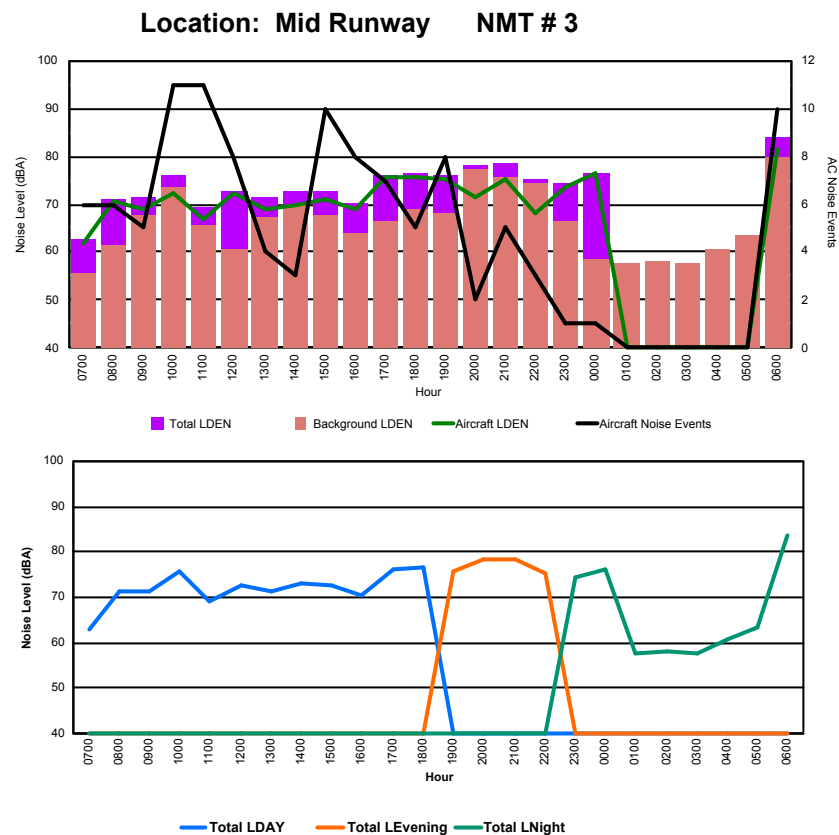




## Luxembourg Airport Noise Distribution by Hour

Between 19/10/2017 00:00:00 and 19/10/2017 23:59:59 (Local Time)

Day	Aircraft Events	Total LDEN dB (A)	Aircraft LDEN dB(A)	Background LDEN dB(A)	Total LDay dB(A)	Total LEvening dB(A)	Total LNight dB (A)
19/10/17 7:00	6	62.9	62.0	55.7	62.9	-	-
19/10/17 8:00	6	71.2	70.7	61.5	71.2	-	-
19/10/17 9:00	5	71.5	69.1	67.9	71.5	-	-
19/10/17 10:00	11	75.9	72.3	73.5	75.9	-	-
19/10/17 11:00	11	69.2	66.7	65.7	69.2	-	-
19/10/17 12:00	8	72.7	72.4	60.8	72.7	-	-
19/10/17 13:00	4	71.3	69.1	67.3	71.3	-	-
19/10/17 14:00	3	72.9	70.0	69.8	72.9	-	-
19/10/17 15:00	10	72.7	71.0	67.7	72.7	-	-
19/10/17 16:00	8	70.3	69.1	64.1	70.3	-	-
19/10/17 17:00	7	76.0	75.5	66.4	76.0	-	-
19/10/17 18:00	5	76.5	75.7	69.0	76.5	-	-
19/10/17 19:00	8	75.9	75.1	68.3	-	75.9	-
19/10/17 20:00	2	78.2	71.4	77.1	-	78.2	-
19/10/17 21:00	5	78.5	75.1	75.8	-	78.5	-
19/10/17 22:00	3	75.3	68.2	74.5	-	75.3	-
19/10/17 23:00	1	74.5	73.7	66.6	-	-	74.5
20/10/17 0:00	1	76.4	76.3	58.4	-	-	76.4
20/10/17 1:00	-	57.7	-	57.7	-	-	57.7
20/10/17 2:00	-	58.2	-	58.3	-	-	58.2
20/10/17 3:00	-	57.7	-	57.7	-	-	57.7
20/10/17 4:00	-	60.8	-	60.8	-	-	60.8
20/10/17 5:00	-	63.6	-	63.6	-	-	63.6
20/10/17 6:00	10	83.8	81.6	79.8	-	-	83.8
	<b>114</b>	<b>75.1</b>	<b>72.9</b>	<b>71.0</b>	<b>73.0</b>	<b>77.2</b>	<b>76.0</b>





## Luxembourg Airport Noise Distribution by Hour

Between 19/10/2017 00:00:00 and 19/10/2017 23:59:59 (Local Time)

Day	Aircraft Events	Total LDEN dB (A)	Aircraft LDEN dB(A)	Background LDEN dB(A)	Total LDay dB(A)	Total LEvening dB(A)	Total LNight dB (A)
19/10/17 7:00	3	64.4	55.3	67.1	64.4	-	-
19/10/17 8:00	5	65.3	59.3	67.7	65.3	-	-
19/10/17 9:00	7	67.2	65.6	62.5	67.2	-	-
19/10/17 10:00	10	68.0	66.8	62.4	68.0	-	-
19/10/17 11:00	8	63.0	58.1	61.5	63.0	-	-
19/10/17 12:00	9	70.2	69.6	61.3	70.2	-	-
19/10/17 13:00	5	68.8	67.8	62.2	68.8	-	-
19/10/17 14:00	8	68.9	68.1	61.8	68.9	-	-
19/10/17 15:00	9	70.2	69.5	62.1	70.2	-	-
19/10/17 16:00	11	68.0	67.0	61.5	68.0	-	-
19/10/17 17:00	7	63.3	59.5	61.1	63.3	-	-
19/10/17 18:00	9	65.3	62.6	62.3	65.3	-	-
19/10/17 19:00	10	72.0	70.4	67.0	-	72.0	-
19/10/17 20:00	2	72.4	71.4	65.6	-	72.4	-
19/10/17 21:00	3	73.1	72.3	65.3	-	73.1	-
19/10/17 22:00	3	71.2	70.3	64.6	-	71.2	-
19/10/17 23:00	1	73.3	72.0	67.3	-	-	73.3
20/10/17 0:00	1	75.7	75.3	64.8	-	-	75.7
20/10/17 1:00	-	63.2	-	63.9	-	-	63.2
20/10/17 2:00	-	62.7	-	63.2	-	-	62.7
20/10/17 3:00	-	64.2	-	64.2	-	-	64.2
20/10/17 4:00	-	67.3	-	68.2	-	-	67.3
20/10/17 5:00	-	70.6	-	72.3	-	-	70.6
20/10/17 6:00	9	78.8	77.7	76.8	-	-	78.8
	<b>120</b>	<b>70.9</b>	<b>69.4</b>	<b>67.3</b>	<b>67.5</b>	<b>72.2</b>	<b>73.0</b>

