

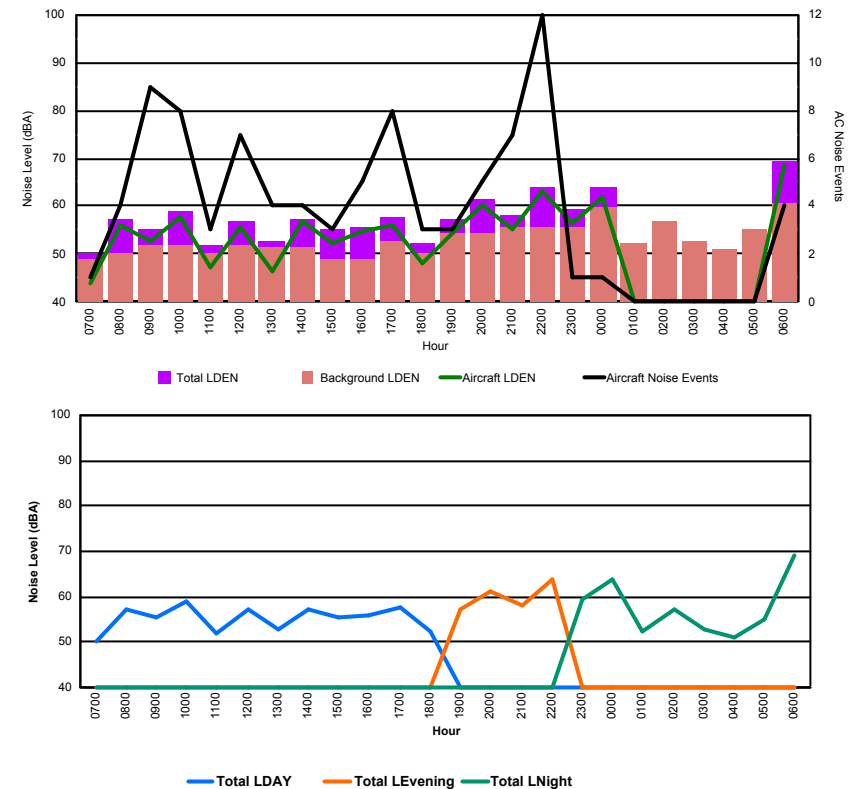


## Luxembourg Airport Noise Distribution by Hour

Between 18/10/2017 00:00:00 and 18/10/2017 23:59:59 (Local Time)

Day	Aircraft Events	Total LDEN dB (A)	Aircraft LDEN dB(A)	Background LDEN dB(A)	Total LDay dB(A)	Total LEvening dB(A)	Total LNight dB (A)
18/10/17 7:00	1	50.3	44.1	49.1	50.3	-	-
18/10/17 8:00	4	57.1	56.1	50.0	57.1	-	-
18/10/17 9:00	9	55.4	52.9	52.0	55.4	-	-
18/10/17 10:00	8	58.8	57.9	51.7	58.8	-	-
18/10/17 11:00	3	51.9	47.1	50.3	51.9	-	-
18/10/17 12:00	7	57.0	55.5	51.8	57.0	-	-
18/10/17 13:00	4	52.6	46.5	51.4	52.6	-	-
18/10/17 14:00	4	57.4	57.0	51.3	57.4	-	-
18/10/17 15:00	3	55.3	52.4	49.1	55.3	-	-
18/10/17 16:00	5	55.8	54.9	48.8	55.8	-	-
18/10/17 17:00	8	57.7	56.1	52.7	57.7	-	-
18/10/17 18:00	3	52.2	48.1	50.2	52.2	-	-
18/10/17 19:00	3	57.3	54.3	54.5	-	57.3	-
18/10/17 20:00	5	61.3	60.4	54.2	-	61.3	-
18/10/17 21:00	7	58.2	55.1	55.5	-	58.2	-
18/10/17 22:00	12	63.9	63.2	55.7	-	63.9	-
18/10/17 23:00	1	59.2	56.6	55.8	-	-	59.2
19/10/17 0:00	1	63.8	61.7	59.7	-	-	63.8
19/10/17 1:00	-	52.3	-	52.3	-	-	52.3
19/10/17 2:00	-	57.0	-	57.0	-	-	57.0
19/10/17 3:00	-	52.7	-	52.8	-	-	52.7
19/10/17 4:00	-	51.2	-	51.2	-	-	51.2
19/10/17 5:00	-	55.2	-	55.2	-	-	55.2
19/10/17 6:00	4	69.3	68.7	60.8	-	-	69.3
	<b>92</b>	<b>59.7</b>	<b>58.3</b>	<b>54.4</b>	<b>55.8</b>	<b>61.0</b>	<b>62.1</b>

Location: Roodt/Syr NMT # 1

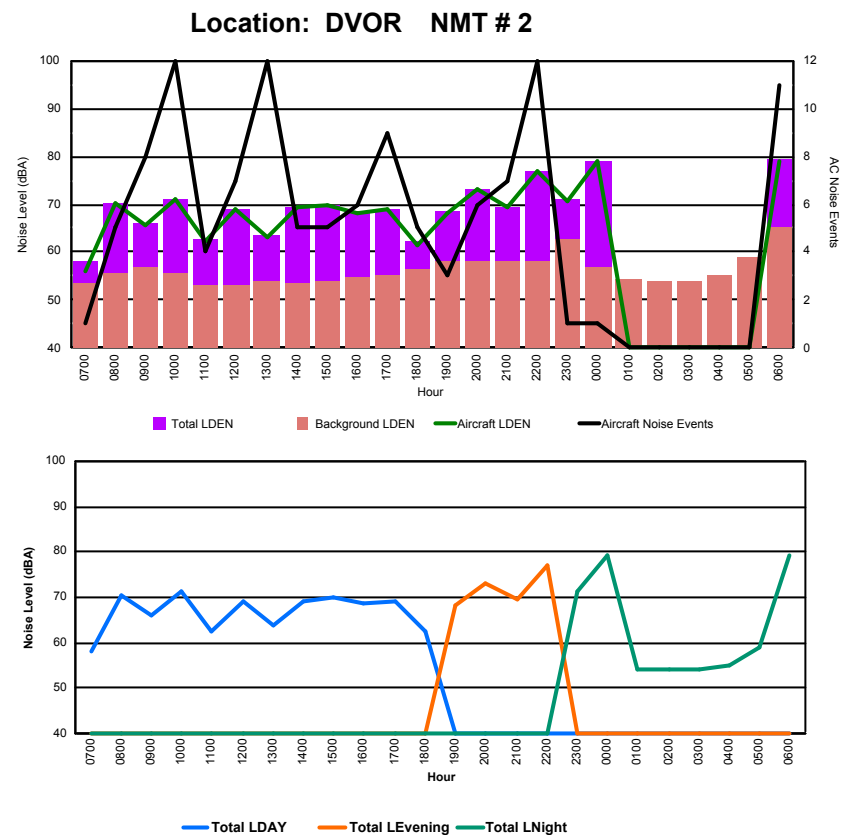




## Luxembourg Airport Noise Distribution by Hour

Between 18/10/2017 00:00:00 and 18/10/2017 23:59:59 (Local Time)

Day	Aircraft Events	Total LDEN dB (A)	Aircraft LDEN dB(A)	Background LDEN dB(A)	Total LDay dB(A)	Total LEvening dB(A)	Total LNight dB (A)
18/10/17 7:00	1	58.0	56.2	53.4	58.0	-	-
18/10/17 8:00	5	70.3	70.1	55.7	70.3	-	-
18/10/17 9:00	8	66.1	65.6	56.7	66.1	-	-
18/10/17 10:00	12	71.2	71.1	55.6	71.2	-	-
18/10/17 11:00	4	62.6	62.1	53.2	62.6	-	-
18/10/17 12:00	7	69.1	69.0	53.0	69.1	-	-
18/10/17 13:00	12	63.7	63.3	54.0	63.7	-	-
18/10/17 14:00	5	69.3	69.2	53.6	69.3	-	-
18/10/17 15:00	5	69.8	69.7	53.8	69.8	-	-
18/10/17 16:00	6	68.5	68.3	54.8	68.5	-	-
18/10/17 17:00	9	69.1	69.0	55.3	69.1	-	-
18/10/17 18:00	5	62.5	61.4	56.3	62.5	-	-
18/10/17 19:00	3	68.4	68.0	58.1	-	68.4	-
18/10/17 20:00	6	73.3	73.1	58.0	-	73.3	-
18/10/17 21:00	7	69.5	69.2	58.2	-	69.5	-
18/10/17 22:00	12	76.9	76.8	58.3	-	76.9	-
18/10/17 23:00	1	71.2	70.5	62.7	-	-	71.2
19/10/17 0:00	1	79.1	79.0	57.0	-	-	79.1
19/10/17 1:00	-	54.3	-	54.3	-	-	54.3
19/10/17 2:00	-	54.0	-	54.0	-	-	54.0
19/10/17 3:00	-	53.9	-	53.9	-	-	53.9
19/10/17 4:00	-	55.0	-	55.0	-	-	55.0
19/10/17 5:00	-	59.1	-	59.1	-	-	59.1
19/10/17 6:00	11	79.2	79.0	65.4	-	-	79.2
	<b>120</b>	<b>71.5</b>	<b>71.3</b>	<b>57.6</b>	<b>68.0</b>	<b>73.3</b>	<b>73.5</b>

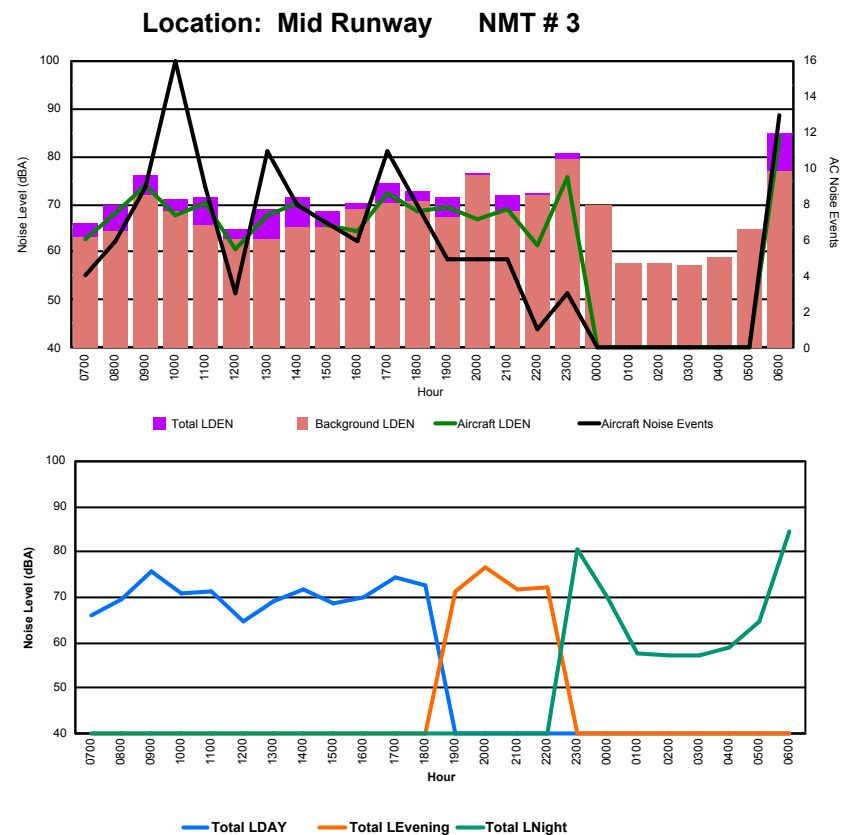




## Luxembourg Airport Noise Distribution by Hour

Between 18/10/2017 00:00:00 and 18/10/2017 23:59:59 (Local Time)

Day	Aircraft Events	Total LDEN dB (A)	Aircraft LDEN dB(A)	Background LDEN dB(A)	Total LDay dB(A)	Total LEvening dB(A)	Total LNight dB (A)
18/10/17 7:00	4	65.9	62.7	63.1	65.9	-	-
18/10/17 8:00	6	69.6	68.1	64.4	69.6	-	-
18/10/17 9:00	9	75.9	73.8	71.8	75.9	-	-
18/10/17 10:00	16	71.0	67.9	68.5	71.0	-	-
18/10/17 11:00	9	71.5	70.2	65.6	71.5	-	-
18/10/17 12:00	3	64.9	60.6	62.9	64.9	-	-
18/10/17 13:00	11	69.0	67.9	62.8	69.0	-	-
18/10/17 14:00	8	71.6	70.4	65.3	71.6	-	-
18/10/17 15:00	7	68.5	65.8	65.1	68.5	-	-
18/10/17 16:00	6	70.1	64.2	68.8	70.1	-	-
18/10/17 17:00	11	74.5	72.4	70.3	74.5	-	-
18/10/17 18:00	8	72.6	68.5	70.5	72.6	-	-
18/10/17 19:00	5	71.5	69.4	67.4	-	71.5	-
18/10/17 20:00	5	76.6	66.8	76.1	-	76.6	-
18/10/17 21:00	5	71.7	68.9	68.4	-	71.7	-
18/10/17 22:00	1	72.1	61.3	71.7	-	72.1	-
18/10/17 23:00	3	80.8	75.5	79.3	-	-	80.8
19/10/17 0:00	-	70.0	-	70.0	-	-	70.0
19/10/17 1:00	-	57.5	-	57.5	-	-	57.5
19/10/17 2:00	-	57.4	-	57.5	-	-	57.4
19/10/17 3:00	-	57.3	-	57.3	-	-	57.3
19/10/17 4:00	-	58.8	-	58.8	-	-	58.8
19/10/17 5:00	-	64.7	-	64.8	-	-	64.7
19/10/17 6:00	13	84.6	83.8	77.0	-	-	84.6
	<b>130</b>	<b>74.5</b>	<b>72.2</b>	<b>70.8</b>	<b>71.5</b>	<b>73.6</b>	<b>77.2</b>





## Luxembourg Airport Noise Distribution by Hour

Between 18/10/2017 00:00:00 and 18/10/2017 23:59:59 (Local Time)

Day	Aircraft Events	Total LDEN dB (A)	Aircraft LDEN dB(A)	Background LDEN dB(A)	Total LDay dB(A)	Total LEvening dB(A)	Total LNight dB (A)
18/10/17 7:00	5	63.7	57.9	65.8	63.7	-	-
18/10/17 8:00	6	67.7	64.4	68.4	67.7	-	-
18/10/17 9:00	4	67.2	64.9	63.1	67.2	-	-
18/10/17 10:00	8	68.2	67.4	61.9	68.2	-	-
18/10/17 11:00	10	68.1	67.2	61.4	68.1	-	-
18/10/17 12:00	4	64.5	56.8	64.1	64.5	-	-
18/10/17 13:00	11	65.6	63.7	61.4	65.6	-	-
18/10/17 14:00	8	66.1	64.1	62.0	66.1	-	-
18/10/17 15:00	7	65.3	63.1	61.6	65.3	-	-
18/10/17 16:00	6	64.4	61.2	61.9	64.4	-	-
18/10/17 17:00	15	70.1	68.9	64.8	70.1	-	-
18/10/17 18:00	15	71.5	70.9	62.8	71.5	-	-
18/10/17 19:00	8	71.5	69.4	67.5	-	71.5	-
18/10/17 20:00	7	68.9	64.1	67.6	-	68.9	-
18/10/17 21:00	3	68.0	61.8	67.1	-	68.0	-
18/10/17 22:00	2	67.6	59.5	68.1	-	67.6	-
18/10/17 23:00	2	79.2	78.6	70.1	-	-	79.2
19/10/17 0:00	-	66.2	-	67.3	-	-	66.2
19/10/17 1:00	-	65.4	-	66.3	-	-	65.4
19/10/17 2:00	-	64.9	-	65.6	-	-	64.9
19/10/17 3:00	-	65.9	-	66.3	-	-	65.9
19/10/17 4:00	-	68.0	-	69.0	-	-	68.0
19/10/17 5:00	-	71.6	-	73.4	-	-	71.6
19/10/17 6:00	9	79.4	78.4	78.2	-	-	79.4
	<b>130</b>	<b>71.1</b>	<b>69.2</b>	<b>68.6</b>	<b>67.5</b>	<b>69.3</b>	<b>74.1</b>

