

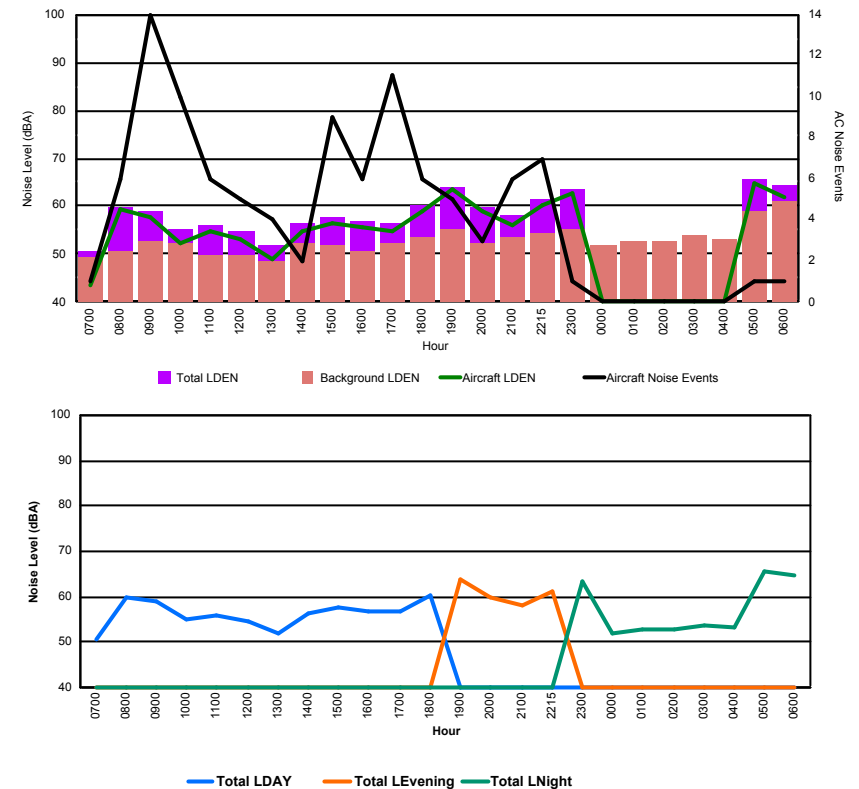


Luxembourg Airport Noise Distribution by Hour

Between 16/10/2017 00:00:00 and 16/10/2017 23:59:59 (Local Time)

Day	Aircraft Events	Total LDEN dB (A)	Aircraft LDEN dB(A)	Background LDEN dB(A)	Total LDay dB(A)	Total LEvening dB(A)	Total LNight dB (A)
16/10/17 7:00	1	50.5	43.5	49.5	50.5	-	-
16/10/17 8:00	6	59.8	59.3	50.8	59.8	-	-
16/10/17 9:00	14	58.9	57.9	52.6	58.9	-	-
16/10/17 10:00	10	55.1	52.4	52.1	55.1	-	-
16/10/17 11:00	6	56.0	54.9	49.7	56.0	-	-
16/10/17 12:00	5	54.6	53.0	49.7	54.6	-	-
16/10/17 13:00	4	51.7	48.9	48.7	51.7	-	-
16/10/17 14:00	2	56.5	54.6	52.2	56.5	-	-
16/10/17 15:00	9	57.7	56.5	51.9	57.7	-	-
16/10/17 16:00	6	56.7	55.6	50.5	56.7	-	-
16/10/17 17:00	11	56.6	54.9	52.2	56.6	-	-
16/10/17 18:00	6	60.1	59.0	53.7	60.1	-	-
16/10/17 19:00	5	64.0	63.4	55.4	-	64.0	-
16/10/17 20:00	3	59.7	58.9	52.3	-	59.7	-
16/10/17 21:00	6	58.1	56.2	53.7	-	58.1	-
16/10/17 22:15	7	61.4	60.4	54.4	-	61.4	-
16/10/17 23:00	1	63.6	62.9	55.0	-	-	63.6
17/10/17 0:00	-	51.9	-	51.9	-	-	51.9
17/10/17 1:00	-	52.6	-	52.6	-	-	52.6
17/10/17 2:00	-	52.7	-	52.8	-	-	52.7
17/10/17 3:00	-	53.7	-	53.8	-	-	53.7
17/10/17 4:00	-	53.1	-	53.1	-	-	53.1
17/10/17 5:00	1	65.7	64.6	59.0	-	-	65.7
17/10/17 6:00	1	64.5	61.9	61.2	-	-	64.5
	104	59.4	58.0	54.0	57.0	61.4	60.9

Location: Roodt/Syr NMT # 1



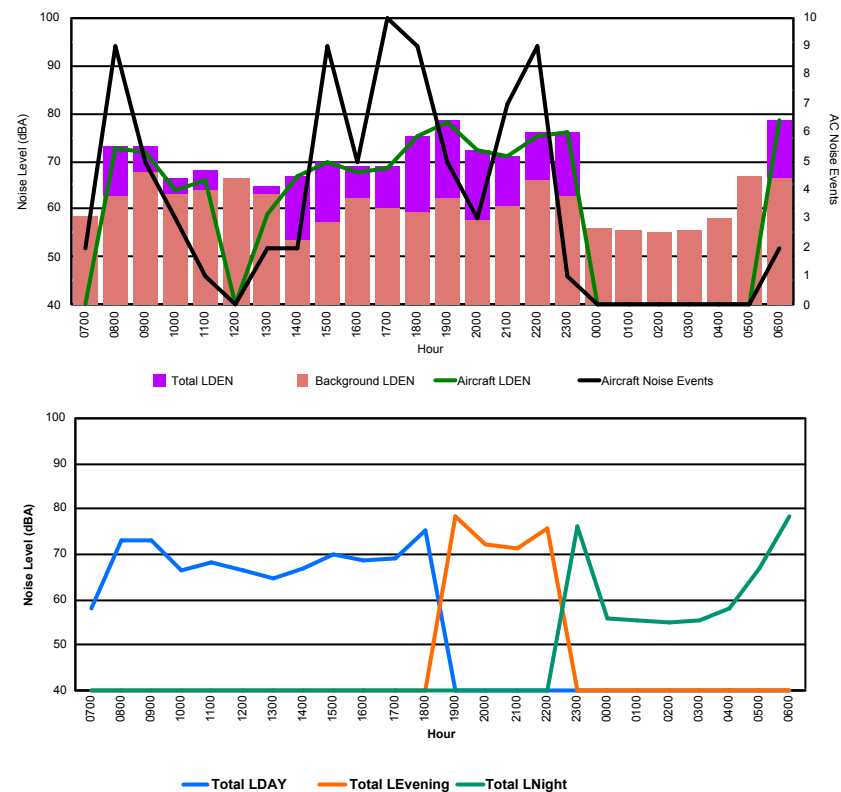


Luxembourg Airport Noise Distribution by Hour

Between 16/10/2017 00:00:00 and 16/10/2017 23:59:59 (Local Time)

Day	Aircraft Events	Total LDEN dB (A)	Aircraft LDEN dB(A)	Background LDEN dB(A)	Total LDay dB(A)	Total LEvening dB(A)	Total LNight dB (A)
16/10/17 7:00	2	58.2	37.1	58.4	58.2	-	-
16/10/17 8:00	9	73.1	72.7	62.6	73.1	-	-
16/10/17 9:00	5	73.3	71.9	67.6	73.3	-	-
16/10/17 10:00	3	66.5	63.8	63.2	66.5	-	-
16/10/17 11:00	1	68.1	65.9	64.1	68.1	-	-
16/10/17 12:00	-	66.5	-	66.5	66.5	-	-
16/10/17 13:00	2	64.6	59.1	63.2	64.6	-	-
16/10/17 14:00	2	67.0	66.8	53.6	67.0	-	-
16/10/17 15:00	9	69.9	69.7	57.3	69.9	-	-
16/10/17 16:00	5	68.9	67.8	62.3	68.9	-	-
16/10/17 17:00	10	69.0	68.4	60.1	69.0	-	-
16/10/17 18:00	9	75.2	75.1	59.3	75.2	-	-
16/10/17 19:00	5	78.4	78.3	62.1	-	78.4	-
16/10/17 20:00	3	72.3	72.1	57.8	-	72.3	-
16/10/17 21:00	7	71.2	70.9	60.7	-	71.2	-
16/10/17 22:00	9	75.9	75.4	66.0	-	75.9	-
16/10/17 23:00	1	76.2	76.0	62.8	-	-	76.2
17/10/17 0:00	-	56.1	-	56.1	-	-	56.1
17/10/17 1:00	-	55.6	-	55.6	-	-	55.6
17/10/17 2:00	-	55.0	-	55.0	-	-	55.0
17/10/17 3:00	-	55.6	-	55.6	-	-	55.6
17/10/17 4:00	-	58.0	-	58.0	-	-	58.0
17/10/17 5:00	-	66.8	-	66.8	-	-	66.8
17/10/17 6:00	2	78.6	78.6	66.6	-	-	78.6
	84	72.0	71.6	62.7	70.2	75.4	71.8

Location: DVOR NMT # 2

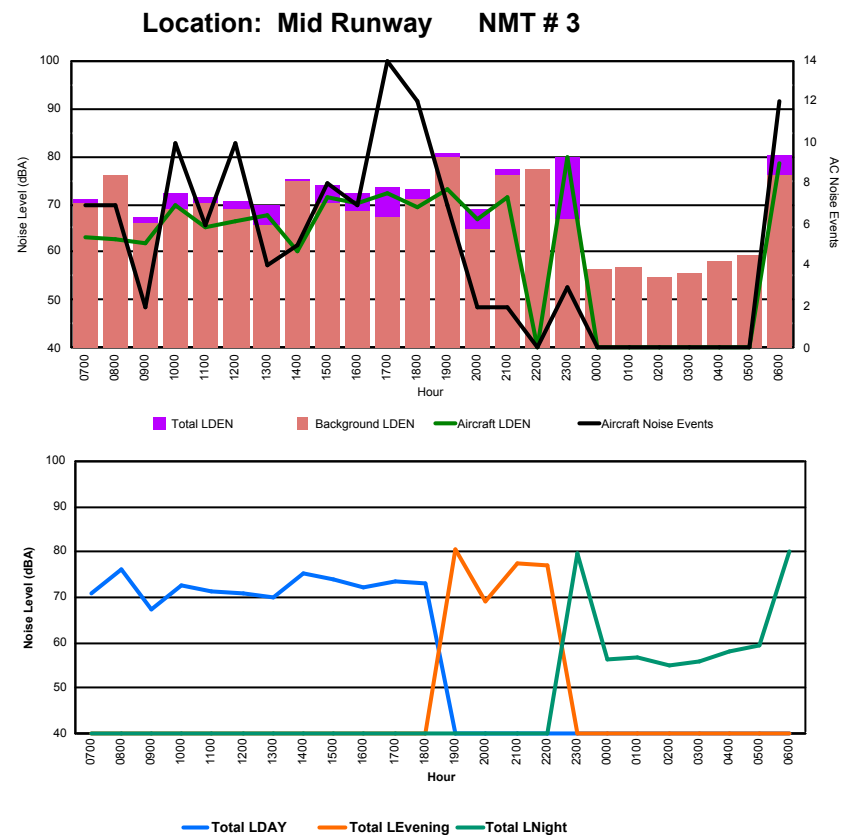




Luxembourg Airport Noise Distribution by Hour

Between 16/10/2017 00:00:00 and 16/10/2017 23:59:59 (Local Time)

Day	Aircraft Events	Total LDEN dB (A)	Aircraft LDEN dB(A)	Background LDEN dB(A)	Total LDay dB(A)	Total LEvening dB(A)	Total LNight dB (A)
16/10/17 7:00	7	70.9	63.0	70.2	70.9	-	-
16/10/17 8:00	7	76.2	62.9	76.0	76.2	-	-
16/10/17 9:00	2	67.5	61.8	66.2	67.5	-	-
16/10/17 10:00	10	72.5	69.9	69.1	72.5	-	-
16/10/17 11:00	6	71.3	65.3	70.1	71.3	-	-
16/10/17 12:00	10	70.8	66.3	69.0	70.8	-	-
16/10/17 13:00	4	69.8	67.8	65.5	69.8	-	-
16/10/17 14:00	5	75.2	60.2	75.0	75.2	-	-
16/10/17 15:00	8	73.9	71.5	70.3	73.9	-	-
16/10/17 16:00	7	72.4	70.1	68.7	72.4	-	-
16/10/17 17:00	14	73.6	72.4	67.1	73.6	-	-
16/10/17 18:00	12	73.3	69.4	71.0	73.3	-	-
16/10/17 19:00	7	80.6	73.1	79.7	-	80.6	-
16/10/17 20:00	2	69.1	67.0	64.9	-	69.1	-
16/10/17 21:00	2	77.4	71.4	76.2	-	77.4	-
16/10/17 22:00	-	77.1	-	77.1	-	77.1	-
16/10/17 23:00	3	79.7	79.6	66.9	-	-	79.7
17/10/17 0:00	-	56.3	-	56.4	-	-	56.3
17/10/17 1:00	-	56.9	-	56.9	-	-	56.9
17/10/17 2:00	-	54.8	-	54.8	-	-	54.8
17/10/17 3:00	-	55.8	-	55.8	-	-	55.8
17/10/17 4:00	-	58.0	-	58.0	-	-	58.0
17/10/17 5:00	-	59.3	-	59.3	-	-	59.3
17/10/17 6:00	12	80.3	78.4	75.9	-	-	80.3
	118	74.4	70.7	72.1	72.9	77.6	74.1





Luxembourg Airport Noise Distribution by Hour

Between 16/10/2017 00:00:00 and 16/10/2017 23:59:59 (Local Time)

Day	Aircraft Events	Total LDEN dB (A)	Aircraft LDEN dB(A)	Background LDEN dB(A)	Total LDay dB(A)	Total LEvening dB(A)	Total LNight dB (A)
16/10/17 7:00	9	69.5	68.9	65.2	69.5	-	-
16/10/17 8:00	6	70.4	69.7	65.5	70.4	-	-
16/10/17 9:00	2	63.1	52.2	63.2	63.1	-	-
16/10/17 10:00	9	67.6	66.1	63.1	67.6	-	-
16/10/17 11:00	13	64.7	60.8	63.0	64.7	-	-
16/10/17 12:00	11	69.0	68.1	62.7	69.0	-	-
16/10/17 13:00	6	66.0	63.6	63.1	66.0	-	-
16/10/17 14:00	6	66.2	64.2	62.1	66.2	-	-
16/10/17 15:00	7	69.6	68.8	61.8	69.6	-	-
16/10/17 16:00	9	65.0	62.6	61.7	65.0	-	-
16/10/17 17:00	16	67.7	66.6	61.7	67.7	-	-
16/10/17 18:00	11	68.4	66.9	63.2	68.4	-	-
16/10/17 19:00	7	72.1	70.9	66.8	-	72.1	-
16/10/17 20:00	2	66.5	58.3	65.9	-	66.5	-
16/10/17 21:00	3	75.1	74.7	65.0	-	75.1	-
16/10/17 22:00	2	73.6	73.1	64.1	-	73.6	-
16/10/17 23:00	3	77.0	76.6	66.8	-	-	77.0
17/10/17 0:00	-	63.7	-	64.5	-	-	63.7
17/10/17 1:00	-	63.4	-	64.3	-	-	63.4
17/10/17 2:00	-	64.0	-	64.4	-	-	64.0
17/10/17 3:00	-	65.6	-	66.0	-	-	65.6
17/10/17 4:00	-	67.3	-	68.1	-	-	67.3
17/10/17 5:00	-	71.0	-	72.5	-	-	71.0
17/10/17 6:00	14	77.6	76.4	82.5	-	-	77.6
	136	70.7	69.3	70.3	67.8	72.8	72.3

Location: NDB-Hamm NMT # 4

