

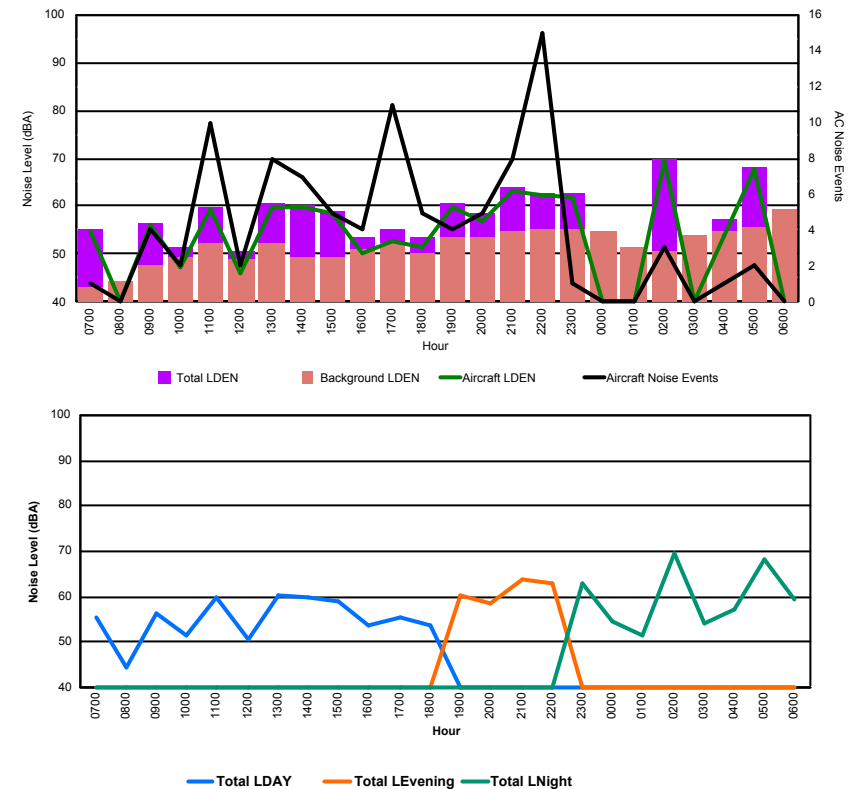


## Luxembourg Airport Noise Distribution by Hour

Between 15/10/2017 00:00:00 and 15/10/2017 23:59:59 (Local Time)

Day	Aircraft Events	Total LDEN dB (A)	Aircraft LDEN dB(A)	Background LDEN dB(A)	Total LDay dB(A)	Total LEvening dB(A)	Total LNight dB (A)
15/10/17 7:00	1	55.3	54.9	43.2	55.3	-	-
15/10/17 8:00	-	44.2	-	44.2	44.2	-	-
15/10/17 9:00	4	56.5	55.9	47.8	56.5	-	-
15/10/17 10:00	2	51.5	47.3	49.5	51.5	-	-
15/10/17 11:00	10	59.9	59.2	52.4	59.9	-	-
15/10/17 12:00	2	50.6	46.1	48.8	50.6	-	-
15/10/17 13:00	8	60.5	59.8	52.1	60.5	-	-
15/10/17 14:00	7	60.0	59.6	49.4	60.0	-	-
15/10/17 15:00	5	58.9	58.4	49.5	58.9	-	-
15/10/17 16:00	4	53.6	50.3	50.9	53.6	-	-
15/10/17 17:00	11	55.4	52.8	52.4	55.4	-	-
15/10/17 18:00	5	53.6	51.3	50.0	53.6	-	-
15/10/17 19:00	4	60.5	59.6	53.6	-	60.5	-
15/10/17 20:00	5	58.5	56.9	53.5	-	58.5	-
15/10/17 21:00	8	63.8	63.2	54.9	-	63.8	-
15/10/17 22:00	15	62.9	62.2	55.4	-	62.9	-
15/10/17 23:00	1	62.8	61.9	55.4	-	-	62.8
16/10/17 0:00	-	54.7	-	54.8	-	-	54.7
16/10/17 1:00	-	51.4	-	51.4	-	-	51.4
16/10/17 2:00	3	69.6	69.5	50.5	-	-	69.6
16/10/17 3:00	-	54.1	-	54.1	-	-	54.1
16/10/17 4:00	1	57.4	54.1	54.7	-	-	57.4
16/10/17 5:00	2	68.2	67.9	55.6	-	-	68.2
16/10/17 6:00	-	59.5	-	59.5	-	-	59.5
	<b>98</b>	<b>61.2</b>	<b>60.5</b>	<b>53.2</b>	<b>56.8</b>	<b>61.9</b>	<b>63.9</b>

Location: Roodt/Syr NMT # 1



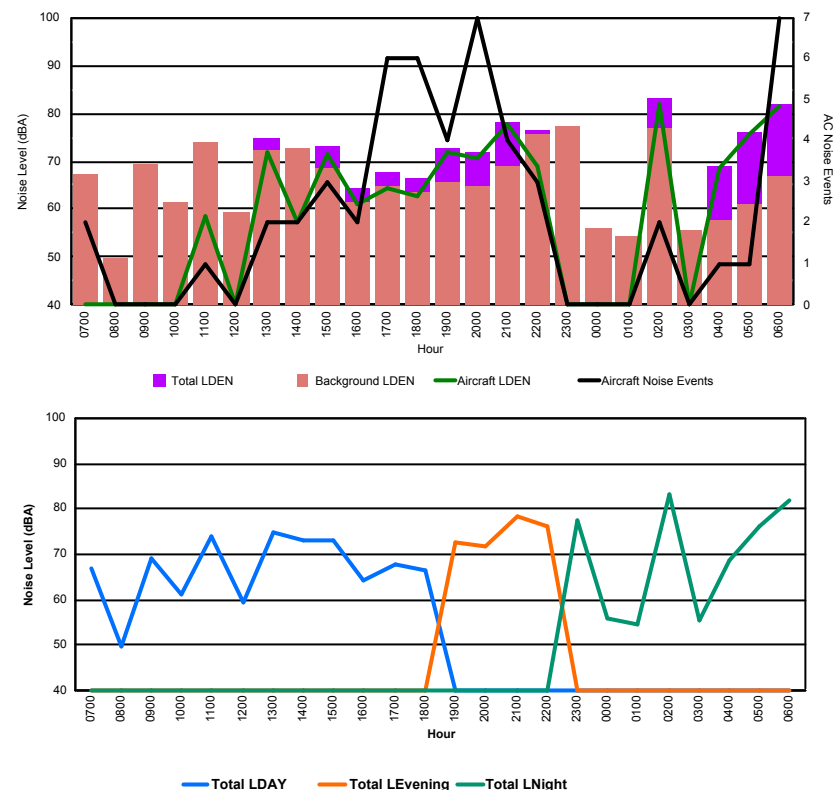


## Luxembourg Airport Noise Distribution by Hour

Between 15/10/2017 00:00:00 and 15/10/2017 23:59:59 (Local Time)

Day	Aircraft Events	Total LDEN dB (A)	Aircraft LDEN dB(A)	Background LDEN dB(A)	Total LDay dB(A)	Total LEvening dB(A)	Total LNight dB (A)
15/10/17 7:00	2	67.1	39.6	67.1	67.1	-	-
15/10/17 8:00	-	49.7	-	49.7	49.7	-	-
15/10/17 9:00	-	69.3	-	69.3	69.3	-	-
15/10/17 10:00	-	61.3	-	61.4	61.3	-	-
15/10/17 11:00	1	74.1	58.5	73.9	74.1	-	-
15/10/17 12:00	-	59.2	-	59.2	59.2	-	-
15/10/17 13:00	2	75.0	72.0	72.1	75.0	-	-
15/10/17 14:00	2	72.9	57.4	72.8	72.9	-	-
15/10/17 15:00	3	73.2	71.3	68.6	73.2	-	-
15/10/17 16:00	2	64.3	61.2	61.3	64.3	-	-
15/10/17 17:00	6	67.6	64.3	64.9	67.6	-	-
15/10/17 18:00	6	66.3	62.9	63.7	66.3	-	-
15/10/17 19:00	4	72.7	71.8	65.6	-	72.7	-
15/10/17 20:00	7	71.7	70.7	64.9	-	71.7	-
15/10/17 21:00	4	78.2	77.6	68.8	-	78.2	-
15/10/17 22:00	3	76.4	69.0	75.7	-	76.4	-
15/10/17 23:00	-	77.5	-	77.5	-	-	77.5
16/10/17 0:00	-	55.9	-	55.9	-	-	55.9
16/10/17 1:00	-	54.4	-	54.4	-	-	54.4
16/10/17 2:00	2	83.1	81.8	77.0	-	-	83.1
16/10/17 3:00	-	55.6	-	55.6	-	-	55.6
16/10/17 4:00	1	68.9	68.6	57.6	-	-	68.9
16/10/17 5:00	1	76.0	75.8	61.0	-	-	76.0
16/10/17 6:00	7	81.7	81.6	66.7	-	-	81.7
	<b>53</b>	<b>74.8</b>	<b>72.9</b>	<b>70.3</b>	<b>70.2</b>	<b>75.5</b>	<b>77.6</b>

Location: DVOR NMT # 2

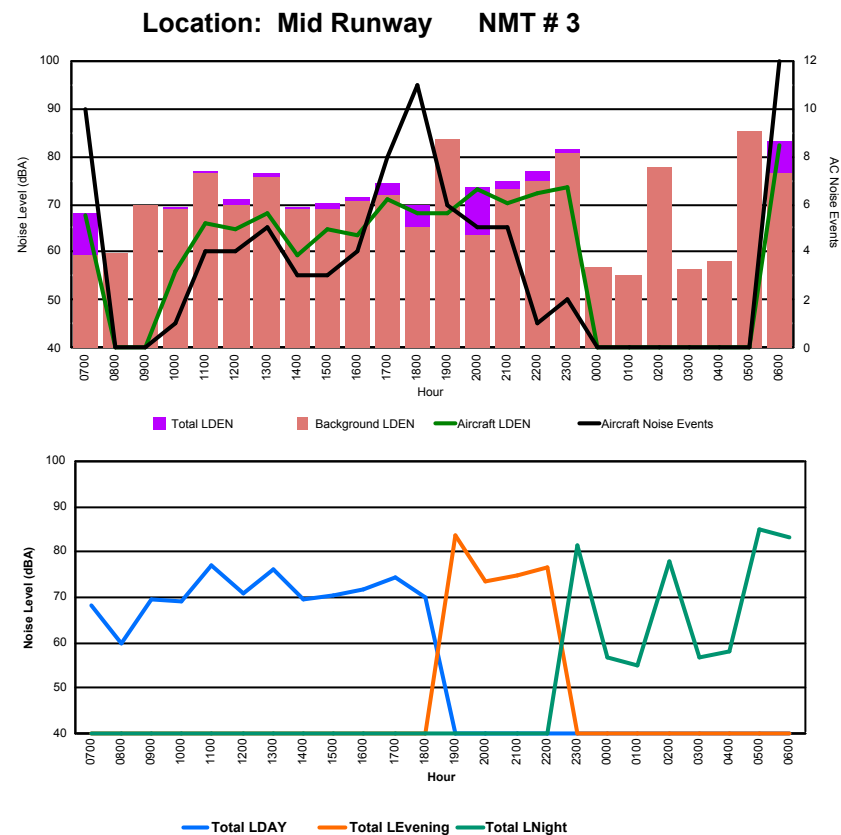




## Luxembourg Airport Noise Distribution by Hour

Between 15/10/2017 00:00:00 and 15/10/2017 23:59:59 (Local Time)

Day	Aircraft Events	Total LDEN dB (A)	Aircraft LDEN dB(A)	Background LDEN dB(A)	Total LDay dB(A)	Total LEvening dB(A)	Total LNight dB (A)
15/10/17 7:00	10	68.2	67.6	59.2	68.2	-	-
15/10/17 8:00	-	59.8	-	59.8	59.8	-	-
15/10/17 9:00	-	69.6	-	69.6	69.6	-	-
15/10/17 10:00	1	69.2	56.1	69.0	69.2	-	-
15/10/17 11:00	4	76.9	66.0	76.6	76.9	-	-
15/10/17 12:00	4	71.0	64.7	69.9	71.0	-	-
15/10/17 13:00	5	76.4	68.2	75.7	76.4	-	-
15/10/17 14:00	3	69.4	59.4	69.0	69.4	-	-
15/10/17 15:00	3	70.3	64.8	68.9	70.3	-	-
15/10/17 16:00	4	71.6	63.7	70.8	71.6	-	-
15/10/17 17:00	8	74.4	71.1	71.8	74.4	-	-
15/10/17 18:00	11	69.8	68.1	65.1	69.8	-	-
15/10/17 19:00	6	83.7	68.2	83.5	-	83.7	-
15/10/17 20:00	5	73.6	73.1	63.5	-	73.6	-
15/10/17 21:00	5	74.9	70.3	73.1	-	74.9	-
15/10/17 22:00	1	76.7	72.3	74.9	-	76.7	-
15/10/17 23:00	2	81.3	73.7	80.5	-	-	81.3
16/10/17 0:00	-	56.8	-	56.9	-	-	56.8
16/10/17 1:00	-	55.2	-	55.2	-	-	55.2
16/10/17 2:00	-	77.8	-	77.8	-	-	77.8
16/10/17 3:00	-	56.6	-	56.6	-	-	56.6
16/10/17 4:00	-	58.0	-	58.0	-	-	58.0
16/10/17 5:00	-	85.1	-	85.1	-	-	85.1
16/10/17 6:00	12	83.2	82.2	76.4	-	-	83.2
	<b>84</b>	<b>77.2</b>	<b>70.8</b>	<b>76.1</b>	<b>72.2</b>	<b>79.2</b>	<b>79.6</b>





## Luxembourg Airport Noise Distribution by Hour

Between 15/10/2017 00:00:00 and 15/10/2017 23:59:59 (Local Time)

Day	Aircraft Events	Total LDEN dB (A)	Aircraft LDEN dB(A)	Background LDEN dB(A)	Total LDay dB(A)	Total LEvening dB(A)	Total LNight dB (A)
15/10/17 7:00	12	62.7	62.4	56.5	62.7	-	-
15/10/17 8:00	1	57.6	47.8	58.0	57.6	-	-
15/10/17 9:00	-	58.4	-	58.4	58.4	-	-
15/10/17 10:00	3	66.0	65.2	58.6	66.0	-	-
15/10/17 11:00	5	61.9	58.7	59.2	61.9	-	-
15/10/17 12:00	11	69.2	68.7	59.8	69.2	-	-
15/10/17 13:00	4	64.7	63.4	58.9	64.7	-	-
15/10/17 14:00	6	60.3	52.1	59.7	60.3	-	-
15/10/17 15:00	10	66.9	66.0	59.6	66.9	-	-
15/10/17 16:00	6	71.5	71.2	59.4	71.5	-	-
15/10/17 17:00	8	72.5	72.3	59.6	72.5	-	-
15/10/17 18:00	14	67.1	66.0	61.3	67.1	-	-
15/10/17 19:00	10	78.9	78.6	66.6	-	78.9	-
15/10/17 20:00	1	65.4	55.4	65.0	-	65.4	-
15/10/17 21:00	6	68.2	66.0	64.4	-	68.2	-
15/10/17 22:00	4	72.4	71.8	63.5	-	72.4	-
15/10/17 23:00	3	80.8	80.6	67.5	-	-	80.8
16/10/17 0:00	-	65.0	-	65.9	-	-	65.0
16/10/17 1:00	-	63.3	-	64.0	-	-	63.3
16/10/17 2:00	-	63.2	-	63.9	-	-	63.2
16/10/17 3:00	-	65.0	-	65.3	-	-	65.0
16/10/17 4:00	-	66.7	-	67.3	-	-	66.7
16/10/17 5:00	-	69.1	-	70.6	-	-	69.1
16/10/17 6:00	15	79.8	79.4	75.2	-	-	79.8
	<b>119</b>	<b>72.3</b>	<b>71.6</b>	<b>65.8</b>	<b>67.2</b>	<b>74.2</b>	<b>74.8</b>

