

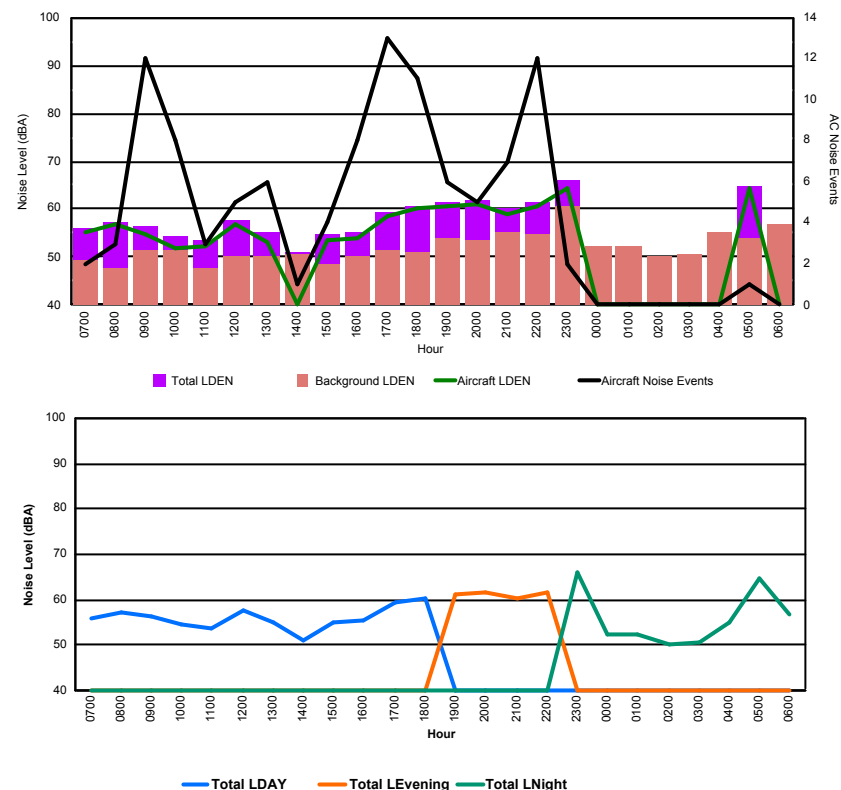


Luxembourg Airport Noise Distribution by Hour

Between 13/10/2017 00:00:00 and 13/10/2017 23:59:59 (Local Time)

Day	Aircraft Events	Total LDEN dB (A)	Aircraft LDEN dB(A)	Background LDEN dB(A)	Total LDay dB(A)	Total LEvening dB(A)	Total LNight dB (A)
13/10/17 7:00	2	56.1	55.1	49.4	56.1	-	-
13/10/17 8:00	3	57.2	56.8	47.6	57.2	-	-
13/10/17 9:00	12	56.5	54.9	51.6	56.5	-	-
13/10/17 10:00	8	54.4	51.9	51.3	54.4	-	-
13/10/17 11:00	3	53.5	52.4	47.5	53.5	-	-
13/10/17 12:00	5	57.8	57.0	50.2	57.8	-	-
13/10/17 13:00	6	55.0	53.3	50.3	55.0	-	-
13/10/17 14:00	1	50.9	38.9	50.7	50.9	-	-
13/10/17 15:00	4	54.8	53.6	48.6	54.8	-	-
13/10/17 16:00	8	55.4	54.0	50.3	55.4	-	-
13/10/17 17:00	13	59.3	58.6	51.3	59.3	-	-
13/10/17 18:00	11	60.5	60.0	50.9	60.5	-	-
13/10/17 19:00	6	61.4	60.6	53.9	-	61.4	-
13/10/17 20:00	5	61.7	61.0	53.4	-	61.7	-
13/10/17 21:00	7	60.4	59.0	55.1	-	60.4	-
13/10/17 22:00	12	61.5	60.5	54.8	-	61.5	-
13/10/17 23:00	2	65.9	64.4	60.5	-	-	65.9
14/10/17 0:00	-	52.3	-	52.3	-	-	52.3
14/10/17 1:00	-	52.3	-	52.4	-	-	52.3
14/10/17 2:00	-	50.0	-	50.0	-	-	50.0
14/10/17 3:00	-	50.5	-	50.5	-	-	50.5
14/10/17 4:00	-	55.0	-	55.0	-	-	55.0
14/10/17 5:00	1	64.7	64.3	53.8	-	-	64.7
14/10/17 6:00	-	56.8	-	56.9	-	-	56.8
	109	59.0	57.7	53.2	56.6	61.3	60.1

Location: Roodt/Syr NMT # 1



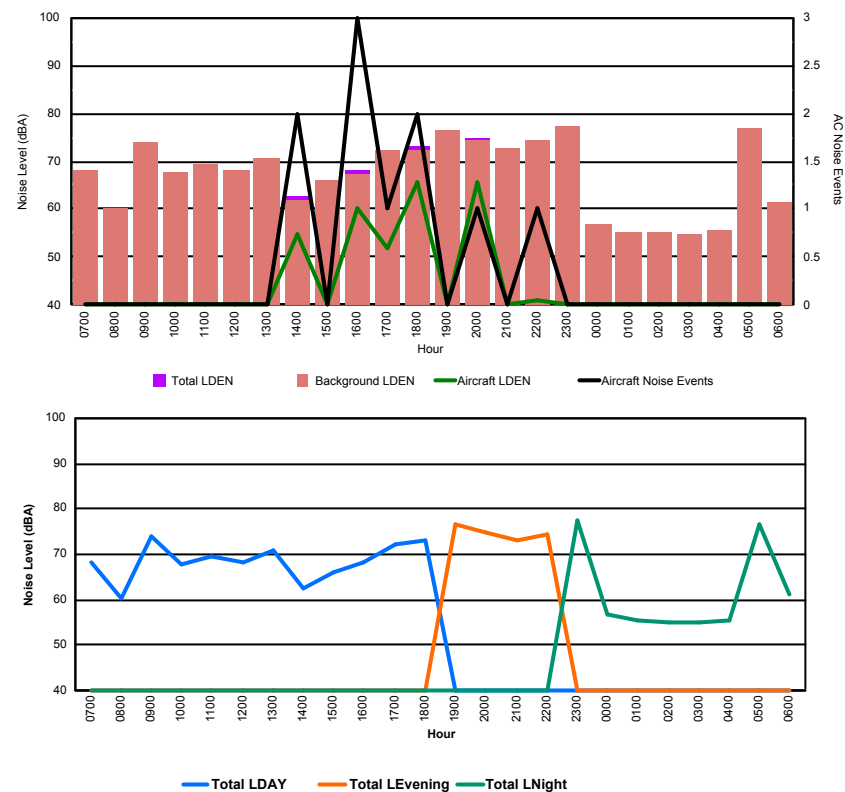


Luxembourg Airport Noise Distribution by Hour

Between 13/10/2017 00:00:00 and 13/10/2017 23:59:59 (Local Time)

Day	Aircraft Events	Total LDEN dB (A)	Aircraft LDEN dB(A)	Background LDEN dB(A)	Total LDay dB(A)	Total LEvening dB(A)	Total LNight dB (A)
13/10/17 7:00	-	68.2	-	68.3	68.2	-	-
13/10/17 8:00	-	60.2	-	60.3	60.2	-	-
13/10/17 9:00	-	73.9	-	73.9	73.9	-	-
13/10/17 10:00	-	67.7	-	67.7	67.7	-	-
13/10/17 11:00	-	69.4	-	69.4	69.4	-	-
13/10/17 12:00	-	68.2	-	68.2	68.2	-	-
13/10/17 13:00	-	70.8	-	70.8	70.8	-	-
13/10/17 14:00	2	62.6	54.6	61.9	62.6	-	-
13/10/17 15:00	-	65.9	-	66.0	65.9	-	-
13/10/17 16:00	3	68.1	60.2	67.4	68.1	-	-
13/10/17 17:00	1	72.3	52.0	72.3	72.3	-	-
13/10/17 18:00	2	73.3	65.5	72.5	73.3	-	-
13/10/17 19:00	-	76.5	-	76.6	-	76.5	-
13/10/17 20:00	1	75.0	65.5	74.5	-	75.0	-
13/10/17 21:00	-	72.9	-	72.9	-	72.9	-
13/10/17 22:00	1	74.4	41.1	74.5	-	74.4	-
13/10/17 23:00	-	77.3	-	77.3	-	-	77.3
14/10/17 0:00	-	56.8	-	56.8	-	-	56.8
14/10/17 1:00	-	55.4	-	55.4	-	-	55.4
14/10/17 2:00	-	55.2	-	55.2	-	-	55.2
14/10/17 3:00	-	54.8	-	54.8	-	-	54.8
14/10/17 4:00	-	55.6	-	55.6	-	-	55.6
14/10/17 5:00	-	76.8	-	76.8	-	-	76.8
14/10/17 6:00	-	61.3	-	61.3	-	-	61.3
	10	71.6	55.5	71.5	69.9	74.9	71.2

Location: DVOR NMT # 2

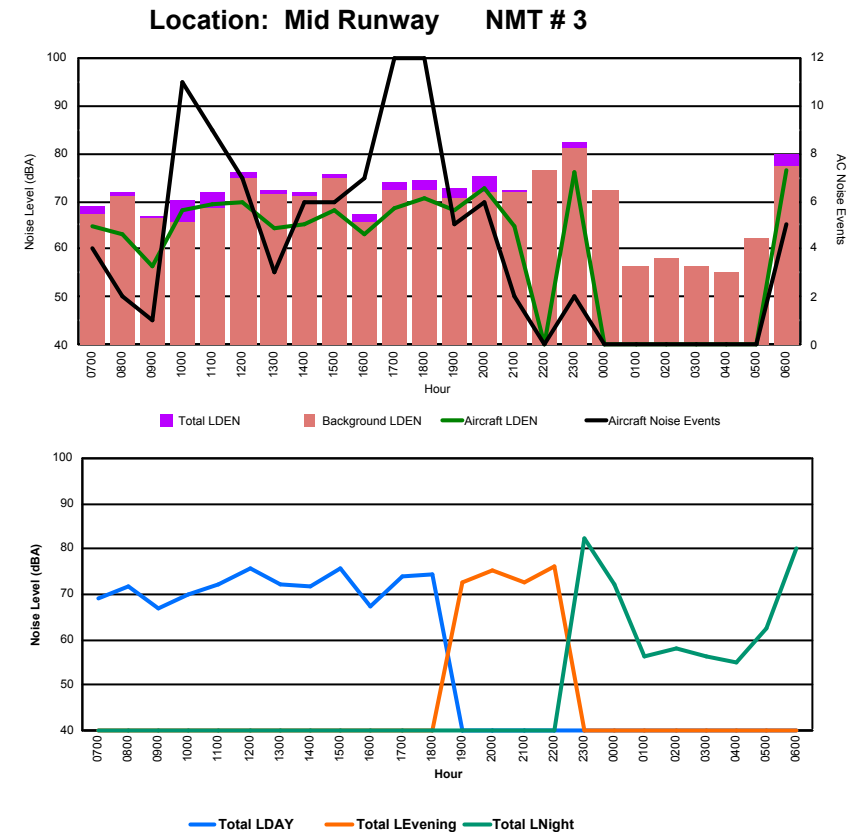




Luxembourg Airport Noise Distribution by Hour

Between 13/10/2017 00:00:00 and 13/10/2017 23:59:59 (Local Time)

Day	Aircraft Events	Total LDEN dB (A)	Aircraft LDEN dB(A)	Background LDEN dB(A)	Total LDay dB(A)	Total LEvening dB(A)	Total LNight dB (A)
13/10/17 7:00	4	69.0	64.6	67.1	69.0	-	-
13/10/17 8:00	2	71.9	63.2	71.2	71.9	-	-
13/10/17 9:00	1	66.8	56.4	66.4	66.8	-	-
13/10/17 10:00	11	70.1	68.1	65.7	70.1	-	-
13/10/17 11:00	9	72.0	69.5	68.5	72.0	-	-
13/10/17 12:00	7	75.9	69.6	74.7	75.9	-	-
13/10/17 13:00	3	72.1	64.3	71.4	72.1	-	-
13/10/17 14:00	6	71.9	65.0	70.9	71.9	-	-
13/10/17 15:00	6	75.6	68.2	74.8	75.6	-	-
13/10/17 16:00	7	67.5	63.2	65.6	67.5	-	-
13/10/17 17:00	12	73.8	68.5	72.4	73.8	-	-
13/10/17 18:00	12	74.5	70.6	72.3	74.5	-	-
13/10/17 19:00	5	72.6	68.3	70.7	-	72.6	-
13/10/17 20:00	6	75.4	72.8	72.0	-	75.4	-
13/10/17 21:00	2	72.5	64.8	71.7	-	72.5	-
13/10/17 22:00	-	76.3	-	76.3	-	76.3	-
13/10/17 23:00	2	82.2	76.2	81.0	-	-	82.2
14/10/17 0:00	-	72.2	-	72.2	-	-	72.2
14/10/17 1:00	-	56.2	-	56.3	-	-	56.2
14/10/17 2:00	-	57.9	-	58.0	-	-	57.9
14/10/17 3:00	-	56.3	-	56.3	-	-	56.3
14/10/17 4:00	-	55.2	-	55.2	-	-	55.2
14/10/17 5:00	-	62.3	-	62.4	-	-	62.3
14/10/17 6:00	5	80.0	76.5	77.5	-	-	80.0
	100	74.1	68.7	72.7	72.6	74.5	75.5





Luxembourg Airport Noise Distribution by Hour

Between 13/10/2017 00:00:00 and 13/10/2017 23:59:59 (Local Time)

Day	Aircraft Events	Total LDEN dB (A)	Aircraft LDEN dB(A)	Background LDEN dB(A)	Total LDay dB(A)	Total LEvening dB(A)	Total LNight dB (A)
13/10/17 7:00	5	63.7	60.3	64.5	63.7	-	-
13/10/17 8:00	5	67.4	66.2	63.7	67.4	-	-
13/10/17 9:00	1	61.6	45.5	61.6	61.6	-	-
13/10/17 10:00	10	63.1	58.8	61.5	63.1	-	-
13/10/17 11:00	12	67.8	66.7	61.7	67.8	-	-
13/10/17 12:00	8	68.5	67.6	61.3	68.5	-	-
13/10/17 13:00	8	65.4	63.1	61.9	65.4	-	-
13/10/17 14:00	13	67.6	66.1	62.4	67.6	-	-
13/10/17 15:00	11	70.9	70.4	62.0	70.9	-	-
13/10/17 16:00	6	63.3	56.8	62.4	63.3	-	-
13/10/17 17:00	12	68.4	67.6	61.4	68.4	-	-
13/10/17 18:00	15	66.4	64.9	61.5	66.4	-	-
13/10/17 19:00	8	68.5	65.0	66.1	-	68.5	-
13/10/17 20:00	4	72.6	71.4	66.1	-	72.6	-
13/10/17 21:00	4	68.0	64.7	65.9	-	68.0	-
13/10/17 22:00	4	74.3	73.7	65.5	-	74.3	-
13/10/17 23:00	3	82.7	82.5	68.8	-	-	82.7
14/10/17 0:00	1	74.9	73.9	69.4	-	-	74.9
14/10/17 1:00	-	67.0	-	68.1	-	-	67.0
14/10/17 2:00	-	65.5	-	66.6	-	-	65.5
14/10/17 3:00	-	66.2	-	66.8	-	-	66.2
14/10/17 4:00	-	67.0	-	67.8	-	-	67.0
14/10/17 5:00	-	67.7	-	68.7	-	-	67.7
14/10/17 6:00	13	75.0	73.9	71.0	-	-	75.0
	143	72.1	71.2	65.9	66.9	71.7	75.3

