

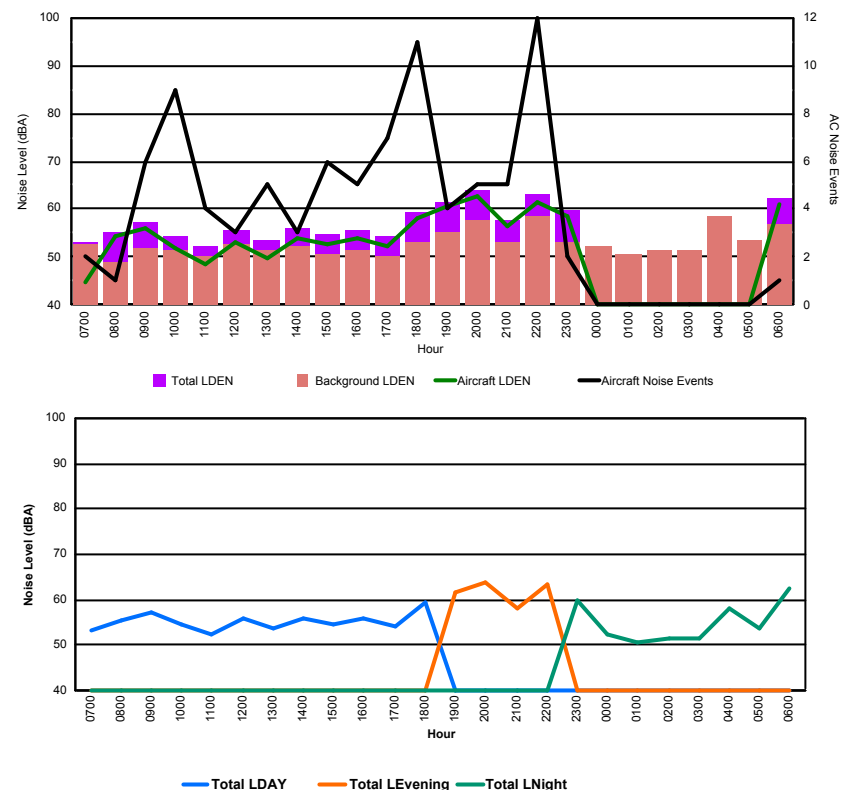


Luxembourg Airport Noise Distribution by Hour

Between 06/10/2017 00:00:00 and 06/10/2017 23:59:59 (Local Time)

Day	Aircraft Events	Total LDEN dB (A)	Aircraft LDEN dB(A)	Background LDEN dB(A)	Total LDay dB(A)	Total LEvening dB(A)	Total LNight dB (A)
06/10/17 7:00	2	53.1	44.7	52.6	53.1	-	-
06/10/17 8:00	1	55.4	54.3	48.8	55.4	-	-
06/10/17 9:00	6	57.3	55.9	51.8	57.3	-	-
06/10/17 10:00	9	54.5	51.8	51.4	54.5	-	-
06/10/17 11:00	4	52.3	48.4	50.1	52.3	-	-
06/10/17 12:00	3	55.8	53.1	52.6	55.8	-	-
06/10/17 13:00	5	53.6	49.7	51.5	53.6	-	-
06/10/17 14:00	3	56.1	54.0	52.1	56.1	-	-
06/10/17 15:00	6	54.7	52.8	50.6	54.7	-	-
06/10/17 16:00	5	55.8	53.9	51.6	55.8	-	-
06/10/17 17:00	7	54.3	52.3	50.2	54.3	-	-
06/10/17 18:00	11	59.2	58.1	53.1	59.2	-	-
06/10/17 19:00	4	61.6	60.6	55.0	-	61.6	-
06/10/17 20:00	5	63.8	62.6	57.5	-	63.8	-
06/10/17 21:00	5	57.9	56.3	53.1	-	57.9	-
06/10/17 22:00	12	63.3	61.6	58.6	-	63.3	-
06/10/17 23:00	2	59.8	58.7	53.2	-	-	59.8
07/10/17 0:00	-	52.2	-	52.3	-	-	52.2
07/10/17 1:00	-	50.8	-	50.8	-	-	50.8
07/10/17 2:00	-	51.6	-	51.6	-	-	51.6
07/10/17 3:00	-	51.3	-	51.3	-	-	51.3
07/10/17 4:00	-	58.3	-	58.4	-	-	58.3
07/10/17 5:00	-	53.6	-	53.6	-	-	53.6
07/10/17 6:00	1	62.4	61.0	56.9	-	-	62.4
	91	58.0	56.0	53.8	55.6	62.2	57.2

Location: Roodt/Syr NMT # 1

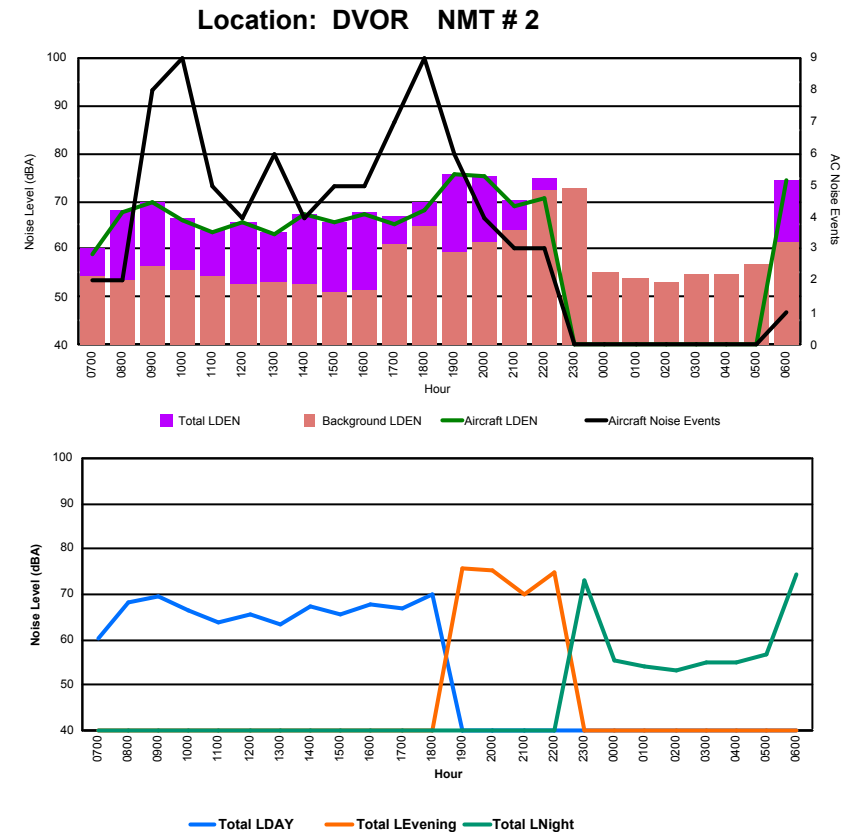




Luxembourg Airport Noise Distribution by Hour

Between 06/10/2017 00:00:00 and 06/10/2017 23:59:59 (Local Time)

Day	Aircraft Events	Total LDEN dB (A)	Aircraft LDEN dB(A)	Background LDEN dB(A)	Total LDay dB(A)	Total LEvening dB(A)	Total LNight dB (A)
06/10/17 7:00	2	60.1	58.8	54.4	60.1	-	-
06/10/17 8:00	2	68.1	67.9	53.5	68.1	-	-
06/10/17 9:00	8	69.7	69.6	56.3	69.7	-	-
06/10/17 10:00	9	66.3	65.9	55.8	66.3	-	-
06/10/17 11:00	5	64.0	63.6	54.3	64.0	-	-
06/10/17 12:00	4	65.8	65.6	52.8	65.8	-	-
06/10/17 13:00	6	63.4	63.0	53.1	63.4	-	-
06/10/17 14:00	4	67.2	67.1	52.8	67.2	-	-
06/10/17 15:00	5	65.6	65.5	51.2	65.6	-	-
06/10/17 16:00	5	67.6	67.5	51.4	67.6	-	-
06/10/17 17:00	7	66.7	65.4	60.9	66.7	-	-
06/10/17 18:00	9	69.9	68.3	64.7	69.9	-	-
06/10/17 19:00	6	75.7	75.6	59.2	-	75.7	-
06/10/17 20:00	4	75.3	75.1	61.4	-	75.3	-
06/10/17 21:00	3	70.2	69.1	63.8	-	70.2	-
06/10/17 22:00	3	74.7	70.6	72.5	-	74.7	-
06/10/17 23:00	-	72.9	-	72.9	-	-	72.9
07/10/17 0:00	-	55.4	-	55.4	-	-	55.4
07/10/17 1:00	-	54.0	-	54.0	-	-	54.0
07/10/17 2:00	-	53.3	-	53.3	-	-	53.3
07/10/17 3:00	-	54.8	-	54.8	-	-	54.8
07/10/17 4:00	-	54.9	-	54.9	-	-	54.9
07/10/17 5:00	-	56.7	-	56.7	-	-	56.7
07/10/17 6:00	1	74.5	74.3	61.3	-	-	74.5
	83	69.6	68.4	63.3	66.9	74.4	67.9



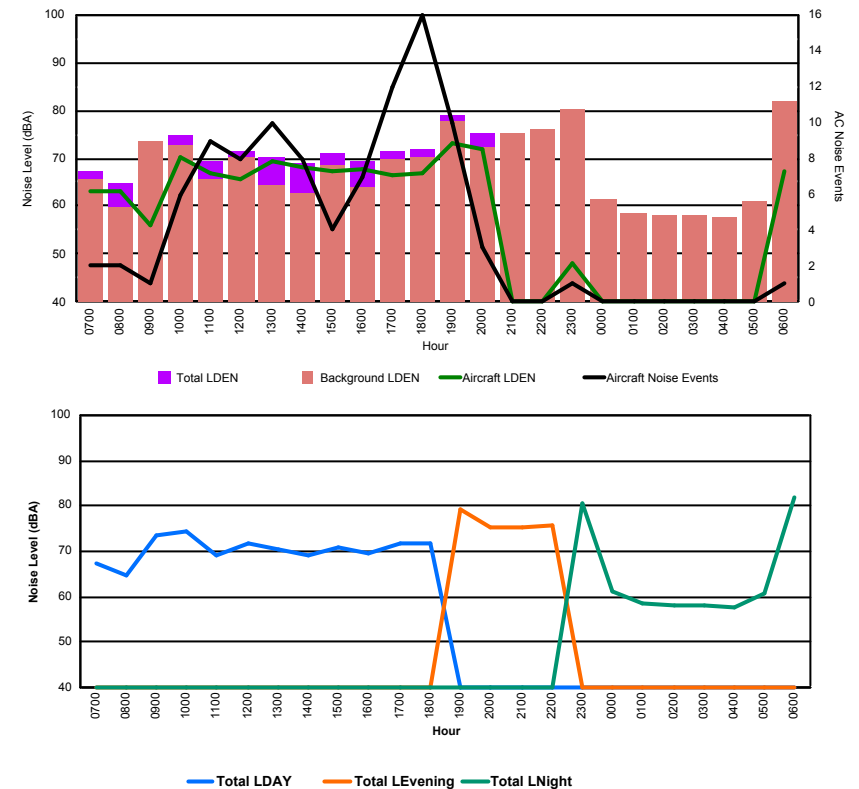


Luxembourg Airport Noise Distribution by Hour

Between 06/10/2017 00:00:00 and 06/10/2017 23:59:59 (Local Time)

Day	Aircraft Events	Total LDEN dB (A)	Aircraft LDEN dB(A)	Background LDEN dB(A)	Total LDay dB(A)	Total LEvening dB(A)	Total LNight dB (A)
06/10/17 7:00	2	67.4	63.1	65.5	67.4	-	-
06/10/17 8:00	2	64.6	63.0	59.8	64.6	-	-
06/10/17 9:00	1	73.5	56.0	73.4	73.5	-	-
06/10/17 10:00	6	74.6	70.3	72.7	74.6	-	-
06/10/17 11:00	9	69.2	67.0	65.7	69.2	-	-
06/10/17 12:00	8	71.6	65.5	70.4	71.6	-	-
06/10/17 13:00	10	70.4	69.2	64.5	70.4	-	-
06/10/17 14:00	8	69.1	68.0	62.8	69.1	-	-
06/10/17 15:00	4	71.0	67.3	68.7	71.0	-	-
06/10/17 16:00	7	69.4	67.9	64.1	69.4	-	-
06/10/17 17:00	12	71.6	66.5	70.0	71.6	-	-
06/10/17 18:00	16	71.9	66.9	70.4	71.9	-	-
06/10/17 19:00	10	79.1	73.3	77.7	-	79.1	-
06/10/17 20:00	3	75.1	71.8	72.4	-	75.1	-
06/10/17 21:00	-	75.2	-	75.2	-	75.2	-
06/10/17 22:00	-	75.9	-	75.9	-	75.9	-
06/10/17 23:00	1	80.4	48.0	80.3	-	-	80.4
07/10/17 0:00	-	61.2	-	61.4	-	-	61.2
07/10/17 1:00	-	58.5	-	58.5	-	-	58.5
07/10/17 2:00	-	58.0	-	58.0	-	-	58.0
07/10/17 3:00	-	58.2	-	58.2	-	-	58.2
07/10/17 4:00	-	57.5	-	57.5	-	-	57.5
07/10/17 5:00	-	60.8	-	60.9	-	-	60.8
07/10/17 6:00	1	81.9	67.3	81.7	-	-	81.9
	100	74.0	66.2	73.2	71.0	76.7	75.3

Location: Mid Runway NMT # 3





Luxembourg Airport Noise Distribution by Hour

Between 06/10/2017 00:00:00 and 06/10/2017 23:59:59 (Local Time)

Day	Aircraft Events	Total LDEN dB (A)	Aircraft LDEN dB(A)	Background LDEN dB(A)	Total LDay dB(A)	Total LEvening dB(A)	Total LNight dB (A)
06/10/17 7:00	6	63.7	58.7	67.8	63.7	-	-
06/10/17 8:00	2	63.9	54.1	66.7	63.9	-	-
06/10/17 9:00	4	69.0	67.7	64.0	69.0	-	-
06/10/17 10:00	11	68.7	66.6	64.9	68.7	-	-
06/10/17 11:00	6	63.1	59.7	60.7	63.1	-	-
06/10/17 12:00	5	68.7	67.7	61.9	68.7	-	-
06/10/17 13:00	7	65.9	63.9	61.7	65.9	-	-
06/10/17 14:00	5	66.4	65.4	59.5	66.4	-	-
06/10/17 15:00	7	62.9	60.0	60.0	62.9	-	-
06/10/17 16:00	7	63.2	59.9	60.8	63.2	-	-
06/10/17 17:00	12	68.1	67.4	60.0	68.1	-	-
06/10/17 18:00	10	65.8	64.6	59.9	65.8	-	-
06/10/17 19:00	8	70.1	68.8	64.3	-	70.1	-
06/10/17 20:00	3	67.0	64.6	63.3	-	67.0	-
06/10/17 21:00	3	70.8	70.5	58.4	-	70.8	-
06/10/17 22:00	3	71.8	71.6	58.2	-	71.8	-
06/10/17 23:00	2	80.0	79.9	62.9	-	-	80.0
07/10/17 0:00	-	62.3	-	62.6	-	-	62.3
07/10/17 1:00	-	61.4	-	61.5	-	-	61.4
07/10/17 2:00	-	59.4	-	59.4	-	-	59.4
07/10/17 3:00	-	59.4	-	59.4	-	-	59.4
07/10/17 4:00	-	60.0	-	60.0	-	-	60.0
07/10/17 5:00	-	61.9	-	61.9	-	-	61.9
07/10/17 6:00	1	63.8	53.9	63.5	-	-	63.8
	102	69.3	68.5	62.6	66.4	70.3	71.4

