

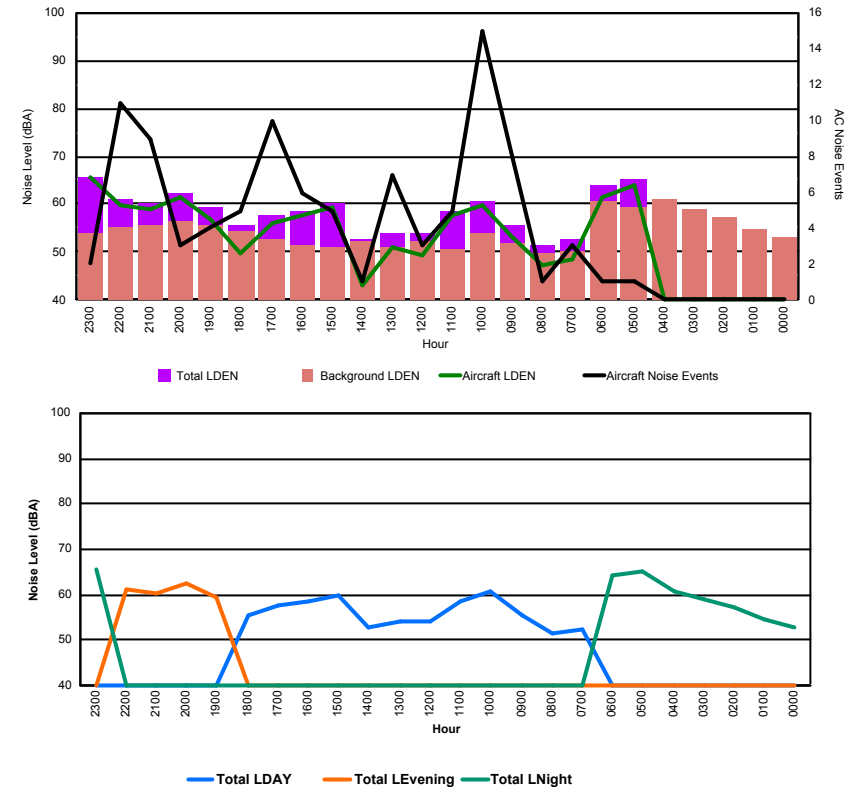


## Luxembourg Airport Noise Distribution by Hour

Between 03/10/2017 00:00:00 and 03/10/2017 23:59:59 (Local Time)

Day	Aircraft Events	Total LDEN dB (A)	Aircraft LDEN dB(A)	Background LDEN dB(A)	Total LDay dB(A)	Total LEvening dB(A)	Total LNight dB (A)
03/10/17 0:00	-	53.0	-	53.0	-	-	53.0
03/10/17 1:00	-	54.7	-	54.7	-	-	54.7
03/10/17 2:00	-	57.1	-	57.1	-	-	57.1
03/10/17 3:00	-	58.9	-	58.9	-	-	58.9
03/10/17 4:00	-	60.9	-	61.0	-	-	60.9
03/10/17 5:00	1	65.1	63.8	59.2	-	-	65.1
03/10/17 6:00	1	64.1	61.5	60.7	-	-	64.1
03/10/17 7:00	3	52.5	48.7	50.3	52.5	-	-
03/10/17 8:00	1	51.6	47.3	49.7	51.6	-	-
03/10/17 9:00	8	55.5	53.2	51.7	55.5	-	-
03/10/17 10:00	15	60.6	59.7	53.8	60.6	-	-
03/10/17 11:00	5	58.6	57.8	50.7	58.6	-	-
03/10/17 12:00	3	54.0	49.3	52.3	54.0	-	-
03/10/17 13:00	7	54.0	51.1	51.1	54.0	-	-
03/10/17 14:00	1	52.6	43.3	52.1	52.6	-	-
03/10/17 15:00	5	60.0	59.5	51.2	60.0	-	-
03/10/17 16:00	6	58.7	57.8	51.4	58.7	-	-
03/10/17 17:00	10	57.7	56.1	52.7	57.7	-	-
03/10/17 18:00	5	55.5	49.8	54.2	55.5	-	-
03/10/17 19:00	4	59.2	56.7	55.8	-	59.2	-
03/10/17 20:00	3	62.5	61.3	56.4	-	62.5	-
03/10/17 21:00	9	60.4	58.8	55.6	-	60.4	-
03/10/17 22:00	11	61.0	59.8	55.3	-	61.0	-
03/10/17 23:00	2	65.7	65.5	54.0	-	-	65.7
	<b>100</b>	<b>59.9</b>	<b>59.0</b>	<b>55.6</b>	<b>56.9</b>	<b>60.9</b>	<b>62.0</b>

Location: Roodt/Syr NMT # 1



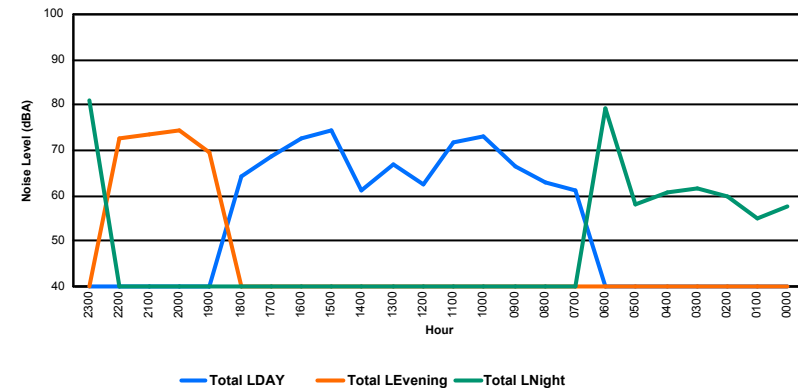
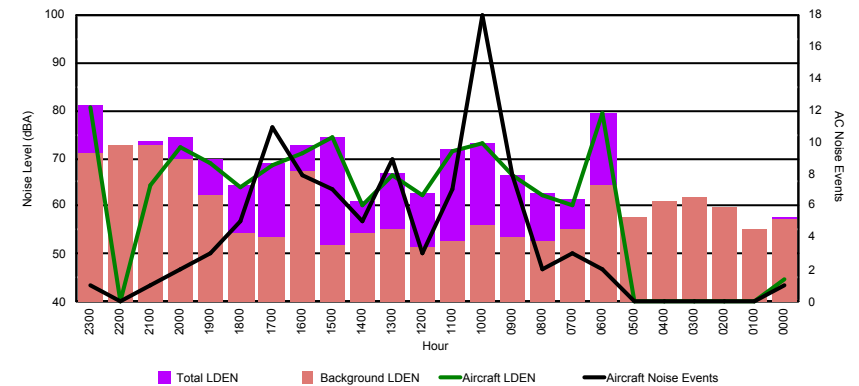


## Luxembourg Airport Noise Distribution by Hour

Between 03/10/2017 00:00:00 and 03/10/2017 23:59:59 (Local Time)

Day	Aircraft Events	Total LDEN dB (A)	Aircraft LDEN dB(A)	Background LDEN dB(A)	Total LDay dB(A)	Total LEvening dB(A)	Total LNight dB (A)
03/10/17 0:00	1	57.5	44.6	57.3	-	-	57.5
03/10/17 1:00	-	55.1	-	55.1	-	-	55.1
03/10/17 2:00	-	59.8	-	59.8	-	-	59.8
03/10/17 3:00	-	61.7	-	61.7	-	-	61.7
03/10/17 4:00	-	60.9	-	60.9	-	-	60.9
03/10/17 5:00	-	57.9	-	57.9	-	-	57.9
03/10/17 6:00	2	79.3	79.2	64.2	-	-	79.3
03/10/17 7:00	3	61.3	60.3	55.1	61.3	-	-
03/10/17 8:00	2	62.8	62.4	52.6	62.8	-	-
03/10/17 9:00	8	66.5	66.3	53.4	66.5	-	-
03/10/17 10:00	18	73.1	73.0	56.2	73.1	-	-
03/10/17 11:00	7	71.7	71.6	52.7	71.7	-	-
03/10/17 12:00	3	62.6	62.3	51.5	62.6	-	-
03/10/17 13:00	9	66.8	66.4	55.4	66.8	-	-
03/10/17 14:00	5	61.1	60.1	54.4	61.1	-	-
03/10/17 15:00	7	74.3	74.3	52.0	74.3	-	-
03/10/17 16:00	8	72.7	71.2	67.4	72.7	-	-
03/10/17 17:00	11	68.8	68.7	53.4	68.8	-	-
03/10/17 18:00	5	64.2	63.8	54.3	64.2	-	-
03/10/17 19:00	3	69.7	68.9	62.2	-	69.7	-
03/10/17 20:00	2	74.3	72.3	70.0	-	74.3	-
03/10/17 21:00	1	73.4	64.2	72.8	-	73.4	-
03/10/17 22:00	-	72.6	-	72.6	-	72.6	-
03/10/17 23:00	1	81.1	80.6	71.2	-	-	81.1
	<b>96</b>	<b>72.2</b>	<b>72.6</b>	<b>65.1</b>	<b>69.5</b>	<b>72.8</b>	<b>74.4</b>

Location: DVOR NMT # 2



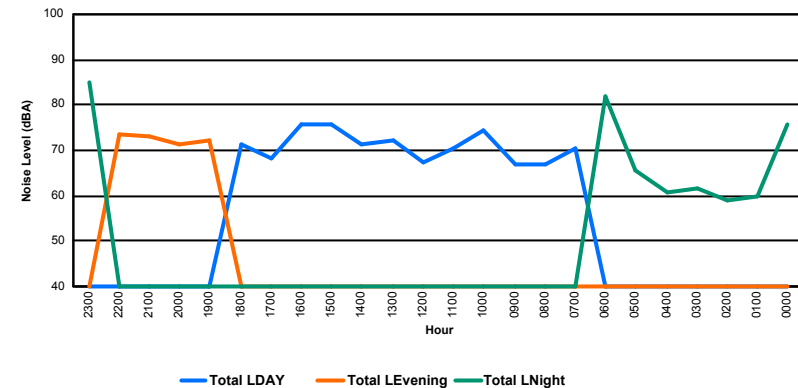
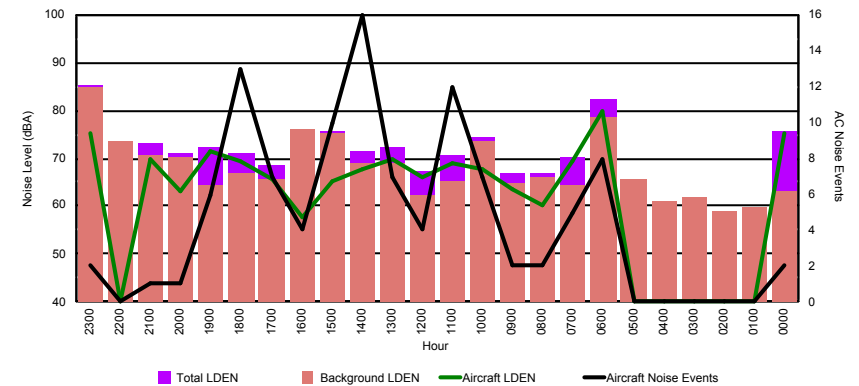


## Luxembourg Airport Noise Distribution by Hour

Between 03/10/2017 00:00:00 and 03/10/2017 23:59:59 (Local Time)

Day	Aircraft Events	Total LDEN dB (A)	Aircraft LDEN dB(A)	Background LDEN dB(A)	Total LDay dB(A)	Total LEvening dB(A)	Total LNight dB (A)
03/10/17 0:00	2	75.7	75.4	63.1	-	-	75.7
03/10/17 1:00	-	59.8	-	59.8	-	-	59.8
03/10/17 2:00	-	59.1	-	59.1	-	-	59.1
03/10/17 3:00	-	61.8	-	61.8	-	-	61.8
03/10/17 4:00	-	60.9	-	60.9	-	-	60.9
03/10/17 5:00	-	65.6	-	65.8	-	-	65.6
03/10/17 6:00	8	82.1	79.6	78.7	-	-	82.1
03/10/17 7:00	5	70.4	69.2	64.3	70.4	-	-
03/10/17 8:00	2	66.8	60.3	65.9	66.8	-	-
03/10/17 9:00	2	67.0	63.5	64.7	67.0	-	-
03/10/17 10:00	7	74.3	67.9	73.4	74.3	-	-
03/10/17 11:00	12	70.5	69.1	65.3	70.5	-	-
03/10/17 12:00	4	67.5	66.1	62.1	67.5	-	-
03/10/17 13:00	7	72.2	69.6	68.8	72.2	-	-
03/10/17 14:00	16	71.3	67.8	68.8	71.3	-	-
03/10/17 15:00	10	75.7	65.2	75.3	75.7	-	-
03/10/17 16:00	4	75.9	57.6	75.9	75.9	-	-
03/10/17 17:00	7	68.4	65.5	65.5	68.4	-	-
03/10/17 18:00	13	71.2	69.4	66.8	71.2	-	-
03/10/17 19:00	6	72.3	71.5	64.4	-	72.3	-
03/10/17 20:00	1	71.2	63.1	70.4	-	71.2	-
03/10/17 21:00	1	73.3	69.9	70.7	-	73.3	-
03/10/17 22:00	-	73.4	-	73.4	-	73.4	-
03/10/17 23:00	2	85.2	75.2	84.7	-	-	85.2
	<b>109</b>	<b>75.2</b>	<b>71.4</b>	<b>73.7</b>	<b>72.0</b>	<b>72.6</b>	<b>78.3</b>

Location: Mid Runway NMT # 3





## Luxembourg Airport Noise Distribution by Hour

Between 03/10/2017 00:00:00 and 03/10/2017 23:59:59 (Local Time)

Day	Aircraft Events	Total LDEN dB (A)	Aircraft LDEN dB(A)	Background LDEN dB(A)	Total LDay dB(A)	Total LEvening dB(A)	Total LNight dB (A)
03/10/17 0:00	1	68.4	67.2	63.0	-	-	68.4
03/10/17 1:00	-	60.7	-	61.0	-	-	60.7
03/10/17 2:00	-	63.2	-	63.8	-	-	63.2
03/10/17 3:00	-	64.4	-	64.4	-	-	64.4
03/10/17 4:00	-	65.2	-	65.4	-	-	65.2
03/10/17 5:00	-	67.6	-	68.7	-	-	67.6
03/10/17 6:00	15	75.9	75.1	73.1	-	-	75.9
03/10/17 7:00	8	67.0	65.4	66.1	67.0	-	-
03/10/17 8:00	3	62.6	57.1	63.0	62.6	-	-
03/10/17 9:00	2	61.3	54.3	60.4	61.3	-	-
03/10/17 10:00	10	69.1	68.5	60.4	69.1	-	-
03/10/17 11:00	8	63.9	61.7	60.1	63.9	-	-
03/10/17 12:00	5	62.4	59.7	59.3	62.4	-	-
03/10/17 13:00	7	65.9	64.7	60.0	65.9	-	-
03/10/17 14:00	14	68.1	67.4	60.0	68.1	-	-
03/10/17 15:00	8	60.2	55.9	58.4	60.2	-	-
03/10/17 16:00	4	58.4	54.4	56.3	58.4	-	-
03/10/17 17:00	9	61.6	59.3	58.1	61.6	-	-
03/10/17 18:00	14	65.9	64.9	59.6	65.9	-	-
03/10/17 19:00	5	66.2	62.0	64.2	-	66.2	-
03/10/17 20:00	2	69.3	68.1	62.9	-	69.3	-
03/10/17 21:00	1	64.0	58.7	62.6	-	64.0	-
03/10/17 22:00	2	71.0	70.2	63.5	-	71.0	-
03/10/17 23:00	7	84.1	84.0	66.3	-	-	84.1
	125	72.0	72.5	64.5	65.0	68.4	76.0

Location: NDB-Hamm NMT # 4

