

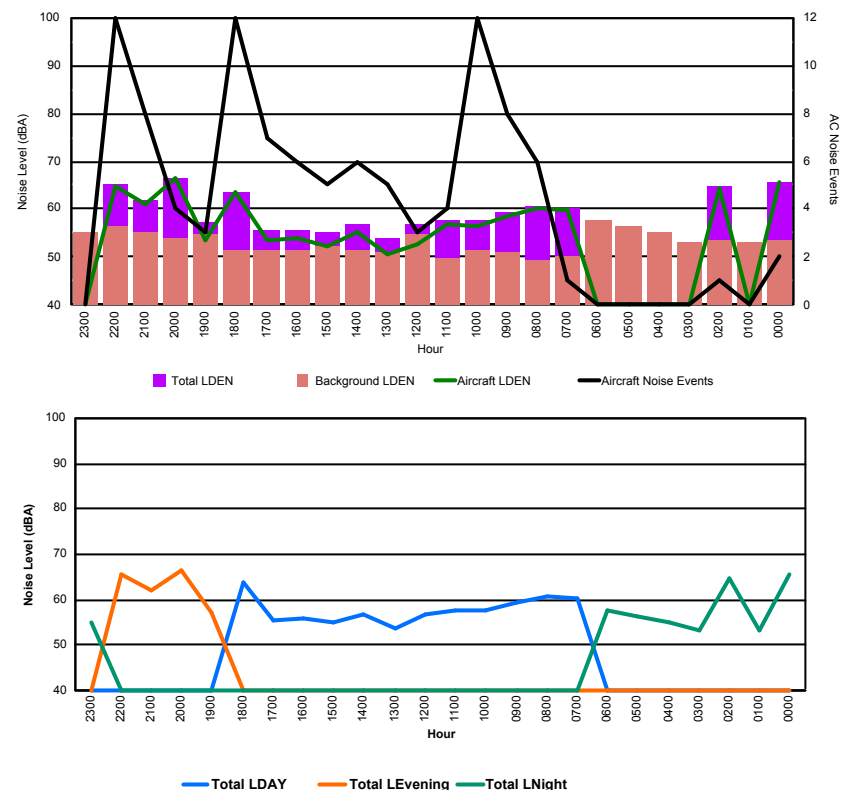


## Luxembourg Airport Noise Distribution by Hour

Between 02/10/2017 00:00:00 and 02/10/2017 23:59:59 (Local Time)

Day	Aircraft Events	Total LDEN dB (A)	Aircraft LDEN dB(A)	Background LDEN dB(A)	Total LDay dB(A)	Total LEvening dB(A)	Total LNight dB (A)
02/10/17 0:00	2	65.8	65.5	53.7	-	-	65.8
02/10/17 1:00	-	53.1	-	53.2	-	-	53.1
02/10/17 2:00	1	64.7	64.3	53.7	-	-	64.7
02/10/17 3:00	-	53.3	-	53.3	-	-	53.3
02/10/17 4:00	-	55.0	-	55.0	-	-	55.0
02/10/17 5:00	-	56.5	-	56.5	-	-	56.5
02/10/17 6:00	-	57.6	-	57.7	-	-	57.6
02/10/17 7:00	1	60.2	59.7	50.3	60.2	-	-
02/10/17 8:00	6	60.7	60.4	49.5	60.7	-	-
02/10/17 9:00	8	59.3	58.7	51.0	59.3	-	-
02/10/17 10:00	12	57.6	56.5	51.4	57.6	-	-
02/10/17 11:00	4	57.6	56.9	49.6	57.6	-	-
02/10/17 12:00	3	56.9	52.7	54.9	56.9	-	-
02/10/17 13:00	5	53.8	50.8	50.9	53.8	-	-
02/10/17 14:00	6	56.7	55.2	51.5	56.7	-	-
02/10/17 15:00	5	55.2	52.4	52.1	55.2	-	-
02/10/17 16:00	6	55.7	53.8	51.3	55.7	-	-
02/10/17 17:00	7	55.5	53.4	51.5	55.5	-	-
02/10/17 18:00	12	63.7	63.5	51.4	63.7	-	-
02/10/17 19:00	3	57.2	53.7	54.7	-	57.2	-
02/10/17 20:00	4	66.6	66.3	53.9	-	66.6	-
02/10/17 21:00	8	61.9	61.0	55.2	-	61.9	-
02/10/17 22:00	12	65.4	64.9	56.3	-	65.4	-
02/10/17 23:00	-	55.0	-	55.0	-	-	55.0
	<b>105</b>	<b>60.6</b>	<b>60.9</b>	<b>53.6</b>	<b>58.7</b>	<b>64.0</b>	<b>60.4</b>

Location: Roodt/Syr NMT # 1



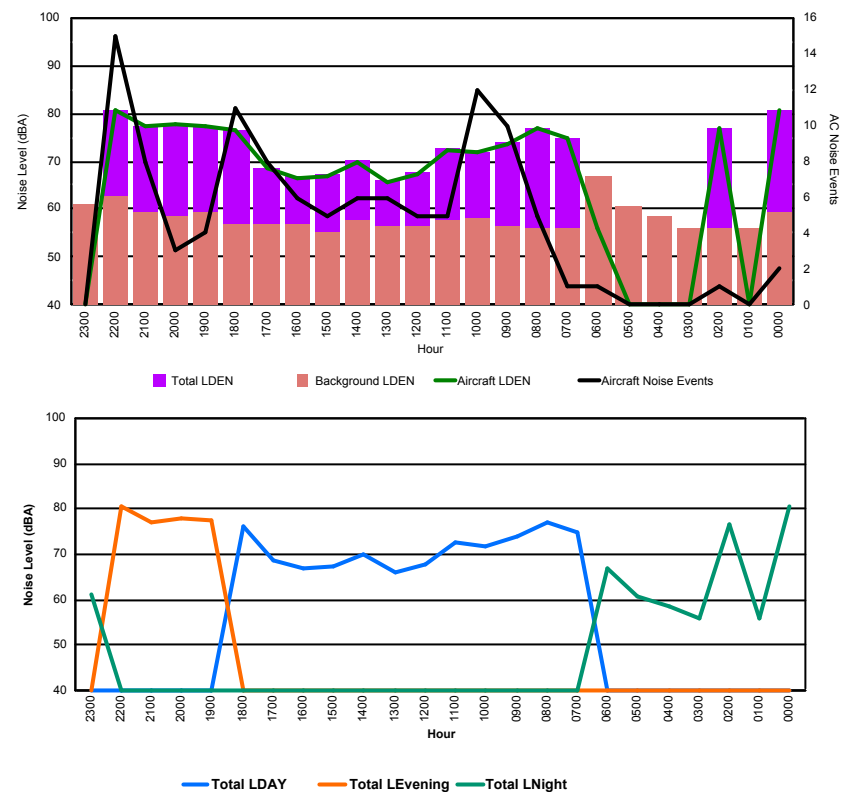


## Luxembourg Airport Noise Distribution by Hour

Between 02/10/2017 00:00:00 and 02/10/2017 23:59:59 (Local Time)

Day	Aircraft Events	Total LDEN dB (A)	Aircraft LDEN dB(A)	Background LDEN dB(A)	Total LDay dB(A)	Total LEvening dB(A)	Total LNight dB (A)
02/10/17 0:00	2	80.8	80.7	59.5	-	-	80.8
02/10/17 1:00	-	55.9	-	55.9	-	-	55.9
02/10/17 2:00	1	76.8	76.7	56.2	-	-	76.8
02/10/17 3:00	-	56.0	-	56.0	-	-	56.0
02/10/17 4:00	-	58.6	-	58.6	-	-	58.6
02/10/17 5:00	-	60.8	-	60.8	-	-	60.8
02/10/17 6:00	1	66.8	56.2	67.0	-	-	66.8
02/10/17 7:00	1	74.9	74.8	56.0	74.9	-	-
02/10/17 8:00	5	77.0	77.0	56.1	77.0	-	-
02/10/17 9:00	10	73.8	73.7	56.6	73.8	-	-
02/10/17 10:00	12	71.9	71.7	58.1	71.9	-	-
02/10/17 11:00	5	72.6	72.5	57.7	72.6	-	-
02/10/17 12:00	5	67.7	67.4	56.6	67.7	-	-
02/10/17 13:00	6	66.2	65.8	56.5	66.2	-	-
02/10/17 14:00	6	70.2	70.0	57.5	70.2	-	-
02/10/17 15:00	5	67.3	67.0	55.4	67.3	-	-
02/10/17 16:00	6	66.7	66.3	56.8	66.7	-	-
02/10/17 17:00	8	68.7	68.4	56.9	68.7	-	-
02/10/17 18:00	11	76.3	76.3	57.0	76.3	-	-
02/10/17 19:00	4	77.3	77.2	59.5	-	77.3	-
02/10/17 20:00	3	77.9	77.8	58.7	-	77.9	-
02/10/17 21:00	8	77.2	77.2	59.4	-	77.2	-
02/10/17 22:00	15	80.7	80.6	62.6	-	80.7	-
02/10/17 23:00	-	61.0	-	61.0	-	-	61.0
	<b>114</b>	<b>74.5</b>	<b>75.4</b>	<b>59.3</b>	<b>72.6</b>	<b>78.5</b>	<b>73.4</b>

Location: DVOR NMT # 2

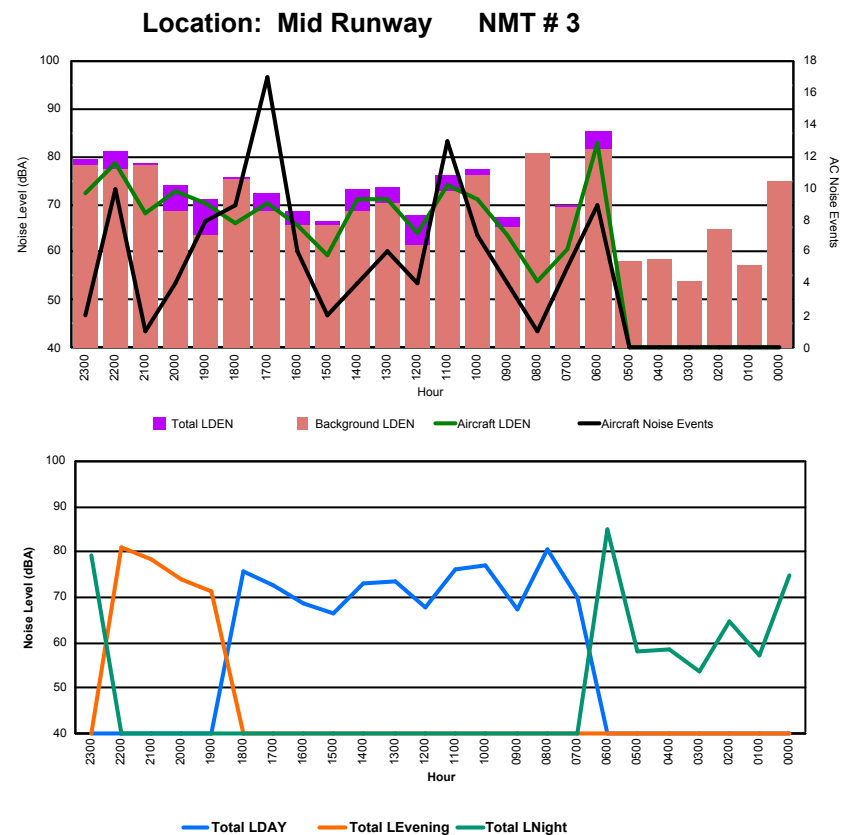




## Luxembourg Airport Noise Distribution by Hour

Between 02/10/2017 00:00:00 and 02/10/2017 23:59:59 (Local Time)

Day	Aircraft Events	Total LDEN dB (A)	Aircraft LDEN dB(A)	Background LDEN dB(A)	Total LDay dB(A)	Total LEvening dB(A)	Total LNight dB (A)
02/10/17 0:00	-	74.8	-	74.8	-	-	74.8
02/10/17 1:00	-	57.3	-	57.3	-	-	57.3
02/10/17 2:00	-	64.9	-	64.9	-	-	64.9
02/10/17 3:00	-	53.8	-	53.8	-	-	53.8
02/10/17 4:00	-	58.6	-	58.6	-	-	58.6
02/10/17 5:00	-	58.1	-	58.1	-	-	58.1
02/10/17 6:00	9	85.2	82.8	81.5	-	-	85.2
02/10/17 7:00	5	70.0	60.8	69.5	70.0	-	-
02/10/17 8:00	1	80.5	53.9	80.5	80.5	-	-
02/10/17 9:00	4	67.5	63.6	65.3	67.5	-	-
02/10/17 10:00	7	77.2	70.9	76.0	77.2	-	-
02/10/17 11:00	13	76.2	73.9	72.9	76.2	-	-
02/10/17 12:00	4	67.9	63.9	61.6	67.9	-	-
02/10/17 13:00	6	73.7	71.1	70.2	73.7	-	-
02/10/17 14:00	4	73.0	71.0	68.5	73.0	-	-
02/10/17 15:00	2	66.6	59.2	65.8	66.6	-	-
02/10/17 16:00	6	68.6	65.7	65.6	68.6	-	-
02/10/17 17:00	17	72.5	70.3	68.7	72.5	-	-
02/10/17 18:00	9	75.6	66.0	75.2	75.6	-	-
02/10/17 19:00	8	71.2	70.4	63.5	-	71.2	-
02/10/17 20:00	4	74.1	72.7	68.4	-	74.1	-
02/10/17 21:00	1	78.5	68.1	78.1	-	78.5	-
02/10/17 22:00	10	81.1	78.6	77.5	-	81.1	-
02/10/17 23:00	2	79.2	72.4	78.3	-	-	79.2
	<b>112</b>	<b>76.3</b>	<b>73.5</b>	<b>74.2</b>	<b>74.5</b>	<b>77.8</b>	<b>77.5</b>





## Luxembourg Airport Noise Distribution by Hour

Between 02/10/2017 00:00:00 and 02/10/2017 23:59:59 (Local Time)

Day	Aircraft Events	Total LDEN dB (A)	Aircraft LDEN dB(A)	Background LDEN dB(A)	Total LDay dB(A)	Total LEvening dB(A)	Total LNight dB (A)
02/10/17 0:00	-	63.6	-	64.3	-	-	63.6
02/10/17 1:00	-	62.0	-	62.4	-	-	62.0
02/10/17 2:00	-	62.9	-	63.4	-	-	62.9
02/10/17 3:00	-	63.6	-	63.7	-	-	63.6
02/10/17 4:00	-	65.9	-	66.3	-	-	65.9
02/10/17 5:00	-	68.9	-	70.3	-	-	68.9
02/10/17 6:00	13	82.5	82.2	75.2	-	-	82.5
02/10/17 7:00	5	63.8	57.1	66.1	63.8	-	-
02/10/17 8:00	1	65.4	50.7	68.0	65.4	-	-
02/10/17 9:00	2	62.8	53.3	63.0	62.8	-	-
02/10/17 10:00	7	68.7	67.9	61.5	68.7	-	-
02/10/17 11:00	13	71.6	71.2	61.3	71.6	-	-
02/10/17 12:00	5	62.2	57.2	60.6	62.2	-	-
02/10/17 13:00	8	69.0	68.4	60.7	69.0	-	-
02/10/17 14:00	6	70.5	70.1	60.7	70.5	-	-
02/10/17 15:00	3	61.0	56.0	59.4	61.0	-	-
02/10/17 16:00	5	63.2	61.0	59.5	63.2	-	-
02/10/17 17:00	8	66.3	65.4	59.2	66.3	-	-
02/10/17 18:00	8	62.4	59.2	59.8	62.4	-	-
02/10/17 19:00	4	65.3	59.5	64.1	-	65.3	-
02/10/17 20:00	3	65.5	62.0	63.0	-	65.5	-
02/10/17 21:00	1	62.6	55.8	61.6	-	62.6	-
02/10/17 22:00	6	77.8	77.7	61.5	-	77.8	-
02/10/17 23:00	1	69.7	68.1	64.7	-	-	69.7
	<b>99</b>	<b>71.5</b>	<b>71.9</b>	<b>65.7</b>	<b>67.0</b>	<b>72.4</b>	<b>74.1</b>

