

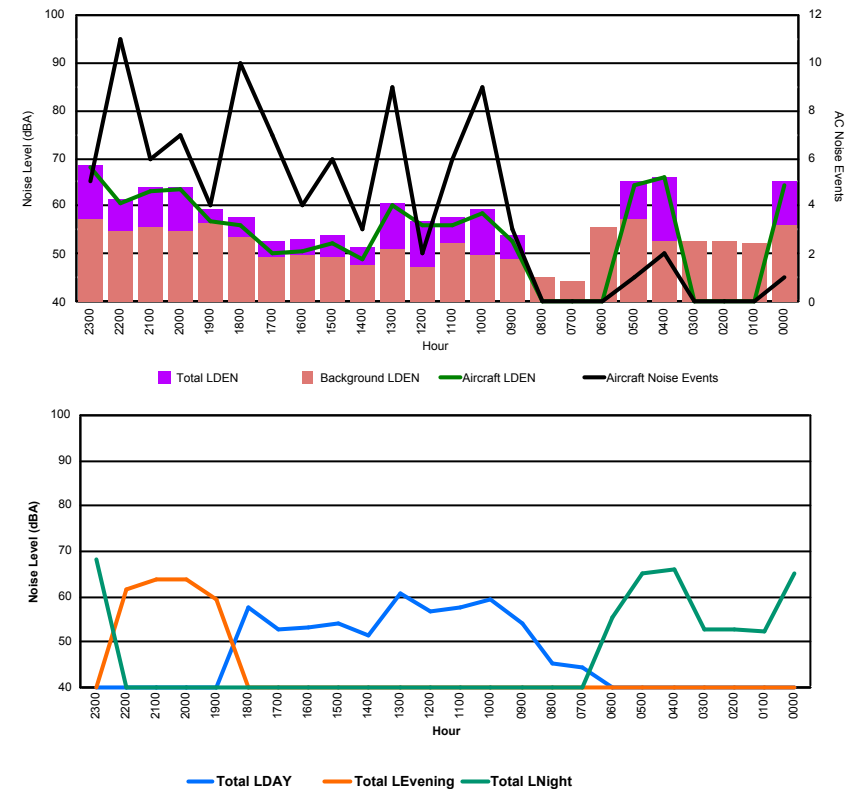


## Luxembourg Airport Noise Distribution by Hour

Between 01/10/2017 00:00:00 and 01/10/2017 23:59:59 (Local Time)

Day	Aircraft Events	Total LDEN dB (A)	Aircraft LDEN dB(A)	Background LDEN dB(A)	Total LDay dB(A)	Total LEvening dB(A)	Total LNight dB (A)
01/10/17 0:00	1	65.0	64.4	56.0	-	-	65.0
01/10/17 1:00	-	52.3	-	52.4	-	-	52.3
01/10/17 2:00	-	52.7	-	52.7	-	-	52.7
01/10/17 3:00	-	52.9	-	52.9	-	-	52.9
01/10/17 4:00	2	66.2	66.0	52.6	-	-	66.2
01/10/17 5:00	1	65.1	64.3	57.1	-	-	65.1
01/10/17 6:00	-	55.5	-	55.6	-	-	55.5
01/10/17 7:00	-	44.3	-	44.3	44.3	-	-
01/10/17 8:00	-	45.3	-	45.3	45.3	-	-
01/10/17 9:00	3	54.1	52.6	48.9	54.1	-	-
01/10/17 10:00	9	59.2	58.7	49.9	59.2	-	-
01/10/17 11:00	6	57.6	56.2	52.4	57.6	-	-
01/10/17 12:00	2	56.7	56.2	47.3	56.7	-	-
01/10/17 13:00	9	60.8	60.4	51.0	60.8	-	-
01/10/17 14:00	3	51.3	49.0	47.6	51.3	-	-
01/10/17 15:00	6	54.0	52.4	49.2	54.0	-	-
01/10/17 16:00	4	53.1	50.6	49.7	53.1	-	-
01/10/17 17:00	7	52.6	50.2	49.3	52.6	-	-
01/10/17 18:00	10	57.8	55.9	53.6	57.8	-	-
01/10/17 19:00	4	59.4	56.7	56.3	-	59.4	-
01/10/17 20:00	7	63.9	63.4	54.9	-	63.9	-
01/10/17 21:00	6	63.8	63.2	55.5	-	63.8	-
01/10/17 22:00	11	61.5	60.6	54.8	-	61.5	-
01/10/17 23:00	5	68.4	68.1	57.3	-	-	68.4
	<b>96</b>	<b>61.0</b>	<b>61.5</b>	<b>53.3</b>	<b>56.0</b>	<b>62.5</b>	<b>63.6</b>

Location: Roodt/Syr NMT # 1



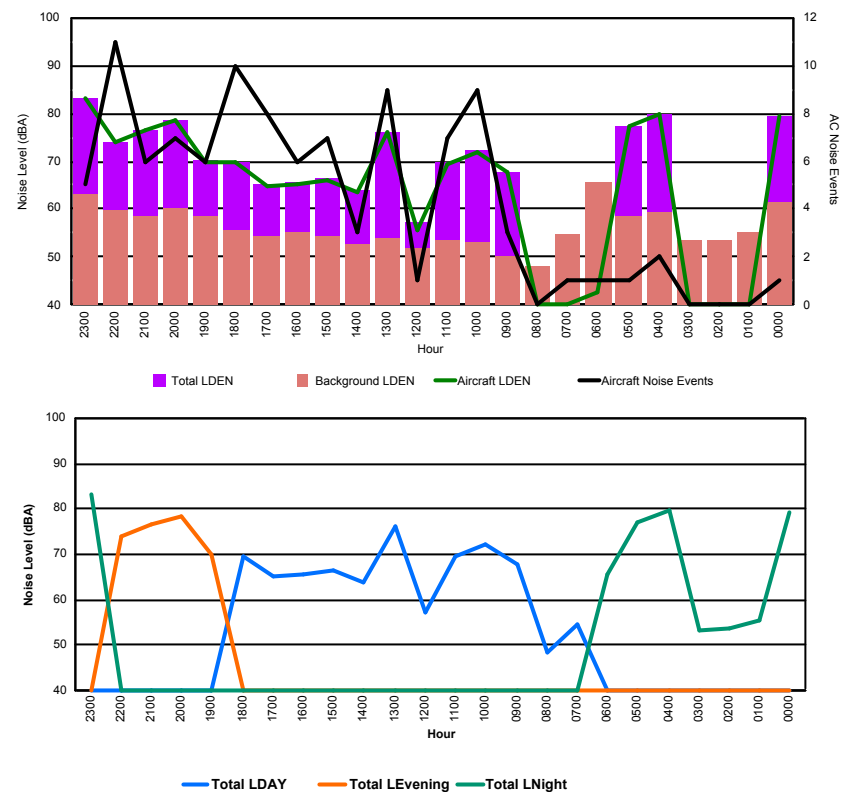


## Luxembourg Airport Noise Distribution by Hour

Between 01/10/2017 00:00:00 and 01/10/2017 23:59:59 (Local Time)

Day	Aircraft Events	Total LDEN dB (A)	Aircraft LDEN dB(A)	Background LDEN dB(A)	Total LDay dB(A)	Total LEvening dB(A)	Total LNight dB (A)
01/10/17 0:00	1	79.3	79.2	61.4	-	-	79.3
01/10/17 1:00	-	55.3	-	55.3	-	-	55.3
01/10/17 2:00	-	53.6	-	53.6	-	-	53.6
01/10/17 3:00	-	53.4	-	53.4	-	-	53.4
01/10/17 4:00	2	79.6	79.6	59.3	-	-	79.6
01/10/17 5:00	1	77.2	77.1	58.7	-	-	77.2
01/10/17 6:00	1	65.4	42.7	65.6	-	-	65.4
01/10/17 7:00	1	54.7	35.9	54.9	54.7	-	-
01/10/17 8:00	-	48.3	-	48.3	48.3	-	-
01/10/17 9:00	3	67.7	67.6	50.1	67.7	-	-
01/10/17 10:00	9	72.1	72.0	53.0	72.1	-	-
01/10/17 11:00	7	69.6	69.5	53.6	69.6	-	-
01/10/17 12:00	1	57.2	55.7	51.9	57.2	-	-
01/10/17 13:00	9	76.0	76.0	53.8	76.0	-	-
01/10/17 14:00	3	63.9	63.5	52.9	63.9	-	-
01/10/17 15:00	7	66.3	66.0	54.3	66.3	-	-
01/10/17 16:00	6	65.7	65.3	55.4	65.7	-	-
01/10/17 17:00	8	65.1	64.7	54.5	65.1	-	-
01/10/17 18:00	10	69.7	69.6	55.5	69.7	-	-
01/10/17 19:00	6	70.1	69.8	58.5	-	70.1	-
01/10/17 20:00	7	78.6	78.5	60.2	-	78.6	-
01/10/17 21:00	6	76.6	76.5	58.6	-	76.6	-
01/10/17 22:00	11	74.0	73.8	59.7	-	74.0	-
01/10/17 23:00	5	83.2	83.1	63.3	-	-	83.2
	<b>104</b>	<b>74.6</b>	<b>75.3</b>	<b>58.2</b>	<b>69.0</b>	<b>75.8</b>	<b>77.4</b>

Location: DVOR NMT # 2

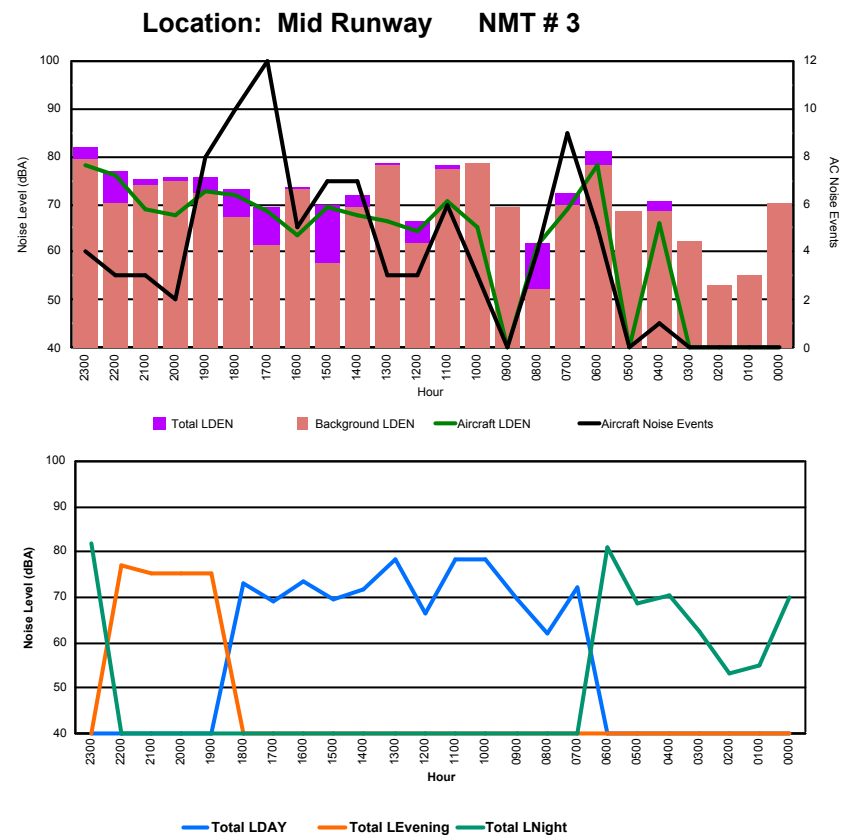




## Luxembourg Airport Noise Distribution by Hour

Between 01/10/2017 00:00:00 and 01/10/2017 23:59:59 (Local Time)

Day	Aircraft Events	Total LDEN dB (A)	Aircraft LDEN dB(A)	Background LDEN dB(A)	Total LDay dB(A)	Total LEvening dB(A)	Total LNight dB (A)
01/10/17 0:00	-	70.2	-	70.2	-	-	70.2
01/10/17 1:00	-	55.1	-	55.1	-	-	55.1
01/10/17 2:00	-	53.2	-	53.2	-	-	53.2
01/10/17 3:00	-	62.3	-	62.5	-	-	62.3
01/10/17 4:00	1	70.5	66.0	68.6	-	-	70.5
01/10/17 5:00	-	68.6	-	68.6	-	-	68.6
01/10/17 6:00	5	81.2	78.0	78.3	-	-	81.2
01/10/17 7:00	9	72.3	68.9	69.7	72.3	-	-
01/10/17 8:00	4	61.9	61.4	52.2	61.9	-	-
01/10/17 9:00	-	69.4	-	69.4	69.4	-	-
01/10/17 10:00	3	78.6	65.2	78.4	78.6	-	-
01/10/17 11:00	6	78.2	70.7	77.4	78.2	-	-
01/10/17 12:00	3	66.4	64.4	61.9	66.4	-	-
01/10/17 13:00	3	78.5	66.4	78.2	78.5	-	-
01/10/17 14:00	7	71.7	67.8	69.4	71.7	-	-
01/10/17 15:00	7	69.6	69.3	57.5	69.6	-	-
01/10/17 16:00	5	73.7	63.6	73.3	73.7	-	-
01/10/17 17:00	12	69.2	68.5	61.6	69.2	-	-
01/10/17 18:00	10	73.2	71.9	67.5	73.2	-	-
01/10/17 19:00	8	75.5	72.6	72.5	-	75.5	-
01/10/17 20:00	2	75.5	67.7	74.7	-	75.5	-
01/10/17 21:00	3	75.1	68.8	74.0	-	75.1	-
01/10/17 22:00	3	76.9	75.9	70.1	-	76.9	-
01/10/17 23:00	4	81.8	78.3	79.3	-	-	81.8
	<b>95</b>	<b>75.1</b>	<b>71.9</b>	<b>73.3</b>	<b>74.2</b>	<b>75.8</b>	<b>75.9</b>





## Luxembourg Airport Noise Distribution by Hour

Between 01/10/2017 00:00:00 and 01/10/2017 23:59:59 (Local Time)

Day	Aircraft Events	Total LDEN dB (A)	Aircraft LDEN dB(A)	Background LDEN dB(A)	Total LDay dB(A)	Total LEvening dB(A)	Total LNight dB (A)
01/10/17 0:00	-	68.6	-	70.4	-	-	68.6
01/10/17 1:00	-	66.9	-	68.4	-	-	66.9
01/10/17 2:00	-	65.6	-	66.8	-	-	65.6
01/10/17 3:00	-	64.7	-	64.9	-	-	64.7
01/10/17 4:00	1	67.1	63.7	64.5	-	-	67.1
01/10/17 5:00	-	65.0	-	65.2	-	-	65.0
01/10/17 6:00	6	78.9	78.8	64.1	-	-	78.9
01/10/17 7:00	11	68.6	68.4	57.0	68.6	-	-
01/10/17 8:00	4	59.0	52.0	58.7	59.0	-	-
01/10/17 9:00	1	67.0	66.3	58.5	67.0	-	-
01/10/17 10:00	3	61.9	57.1	60.2	61.9	-	-
01/10/17 11:00	6	65.0	63.7	59.3	65.0	-	-
01/10/17 12:00	5	61.4	57.5	59.3	61.4	-	-
01/10/17 13:00	5	65.5	64.2	59.6	65.5	-	-
01/10/17 14:00	9	69.8	69.4	59.2	69.8	-	-
01/10/17 15:00	2	67.3	66.5	59.6	67.3	-	-
01/10/17 16:00	10	73.0	72.8	59.5	73.0	-	-
01/10/17 17:00	10	63.9	61.9	59.7	63.9	-	-
01/10/17 18:00	13	70.3	69.8	60.7	70.3	-	-
01/10/17 19:00	7	67.9	65.3	64.7	-	67.9	-
01/10/17 20:00	4	69.0	67.5	63.6	-	69.0	-
01/10/17 21:00	4	67.1	64.7	63.6	-	67.1	-
01/10/17 22:00	2	70.4	69.6	62.9	-	70.4	-
01/10/17 23:00	4	80.1	79.9	66.0	-	-	80.1
	<b>107</b>	<b>71.1</b>	<b>71.3</b>	<b>63.9</b>	<b>67.7</b>	<b>68.8</b>	<b>74.1</b>

Location: NDB-Hamm NMT # 4

