

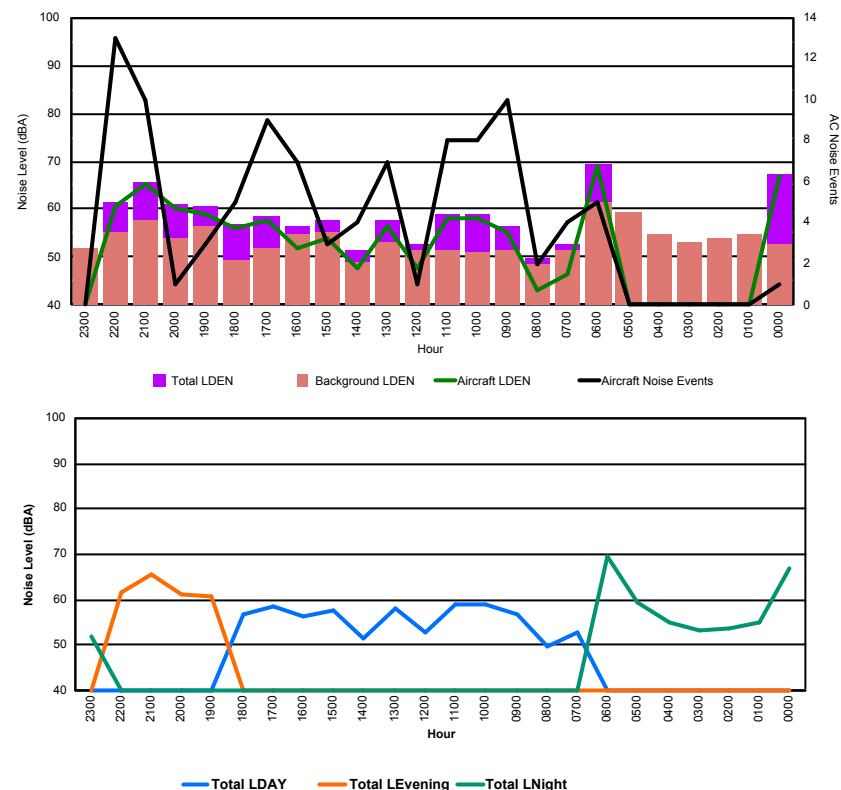


## Luxembourg Airport Noise Distribution by Hour

Between 28/09/2017 00:00:00 and 28/09/2017 23:59:59 (Local Time)

Day	Aircraft Events	Total LDEN dB (A)	Aircraft LDEN dB(A)	Background LDEN dB(A)	Total LDay dB(A)	Total LEvening dB(A)	Total LNight dB (A)
28/09/17 0:00	1	67.1	66.9	52.6	-	-	67.1
28/09/17 1:00	-	54.9	-	54.9	-	-	54.9
28/09/17 2:00	-	53.8	-	53.8	-	-	53.8
28/09/17 3:00	-	53.3	-	53.3	-	-	53.3
28/09/17 4:00	-	54.9	-	54.9	-	-	54.9
28/09/17 5:00	-	59.3	-	59.3	-	-	59.3
28/09/17 6:00	5	69.5	68.9	61.3	-	-	69.5
28/09/17 7:00	4	52.6	46.3	51.6	52.6	-	-
28/09/17 8:00	2	49.6	43.0	48.5	49.6	-	-
28/09/17 9:00	10	56.6	55.2	51.5	56.6	-	-
28/09/17 10:00	8	58.8	58.2	50.9	58.8	-	-
28/09/17 11:00	8	59.0	58.2	51.4	59.0	-	-
28/09/17 12:00	1	52.8	47.8	51.5	52.8	-	-
28/09/17 13:00	7	57.9	56.3	53.0	57.9	-	-
28/09/17 14:00	4	51.4	47.9	49.0	51.4	-	-
28/09/17 15:00	3	57.6	53.9	55.3	57.6	-	-
28/09/17 16:00	7	56.5	51.8	54.9	56.5	-	-
28/09/17 17:00	9	58.5	57.6	51.7	58.5	-	-
28/09/17 18:00	5	56.7	55.9	49.5	56.7	-	-
28/09/17 19:00	3	60.8	58.8	56.5	-	60.8	-
28/09/17 20:00	1	61.2	60.2	54.1	-	61.2	-
28/09/17 21:00	10	65.7	65.0	57.8	-	65.7	-
28/09/17 22:00	13	61.5	60.5	55.3	-	61.5	-
28/09/17 23:00	-	51.9	-	51.9	-	-	51.9
	<b>101</b>	<b>60.9</b>	<b>60.9</b>	<b>54.8</b>	<b>56.6</b>	<b>62.8</b>	<b>63.0</b>

Location: Roodt/Syr NMT # 1



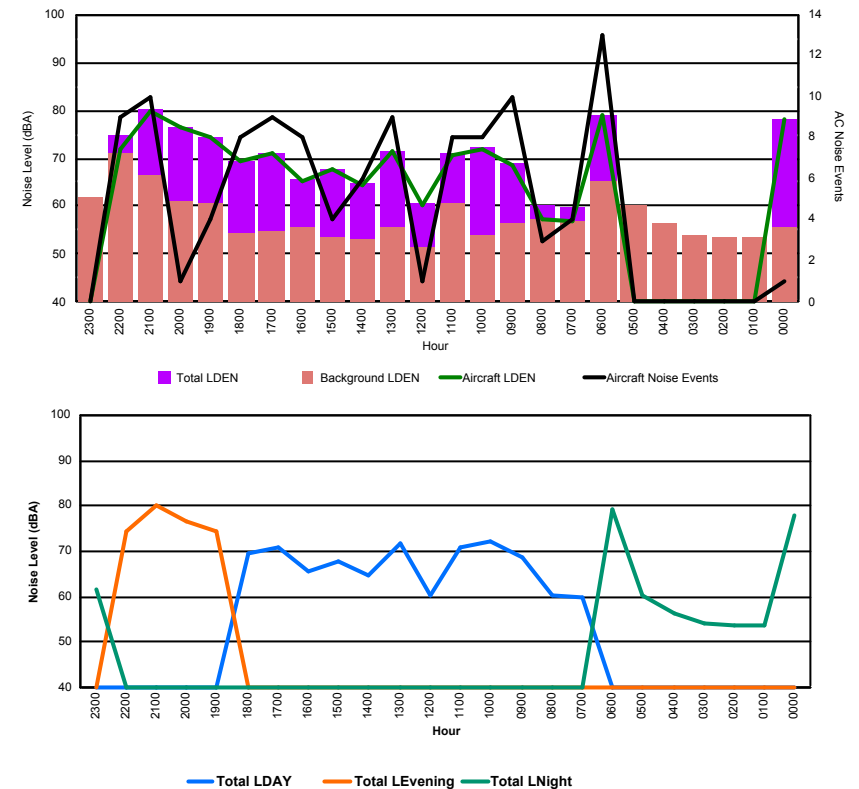


## Luxembourg Airport Noise Distribution by Hour

Between 28/09/2017 00:00:00 and 28/09/2017 23:59:59 (Local Time)

Day	Aircraft Events	Total LDEN dB (A)	Aircraft LDEN dB(A)	Background LDEN dB(A)	Total LDay dB(A)	Total LEvening dB(A)	Total LNight dB (A)
28/09/17 0:00	1	78.1	78.0	55.6	-	-	78.1
28/09/17 1:00	-	53.6	-	53.6	-	-	53.6
28/09/17 2:00	-	53.7	-	53.7	-	-	53.7
28/09/17 3:00	-	54.0	-	54.0	-	-	54.0
28/09/17 4:00	-	56.5	-	56.5	-	-	56.5
28/09/17 5:00	-	60.4	-	60.4	-	-	60.4
28/09/17 6:00	13	79.1	78.9	65.4	-	-	79.1
28/09/17 7:00	4	59.8	56.8	56.9	59.8	-	-
28/09/17 8:00	3	60.2	57.2	57.3	60.2	-	-
28/09/17 9:00	10	68.8	68.6	56.6	68.8	-	-
28/09/17 10:00	8	72.1	72.0	54.0	72.1	-	-
28/09/17 11:00	8	71.1	70.8	60.6	71.1	-	-
28/09/17 12:00	1	60.5	60.0	51.3	60.5	-	-
28/09/17 13:00	9	71.6	71.5	55.6	71.6	-	-
28/09/17 14:00	6	64.6	64.2	53.3	64.6	-	-
28/09/17 15:00	4	67.8	67.7	53.6	67.8	-	-
28/09/17 16:00	8	65.5	65.0	55.6	65.5	-	-
28/09/17 17:00	9	71.1	71.1	54.6	71.1	-	-
28/09/17 18:00	8	69.5	69.4	54.2	69.5	-	-
28/09/17 19:00	4	74.5	74.3	60.6	-	74.5	-
28/09/17 20:00	1	76.5	76.3	61.2	-	76.5	-
28/09/17 21:00	10	80.1	79.9	66.6	-	80.1	-
28/09/17 22:00	9	74.6	72.0	71.2	-	74.6	-
28/09/17 23:00	-	61.7	-	61.7	-	-	61.7
	116	72.7	73.6	61.3	68.7	77.1	72.7

Location: DVOR NMT # 2

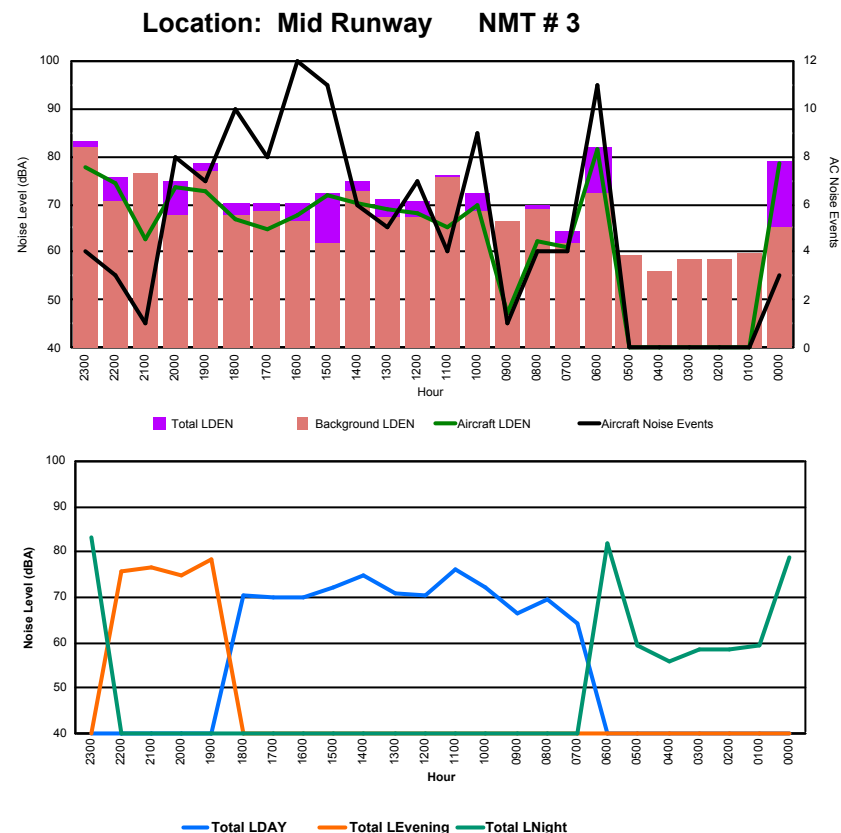




## Luxembourg Airport Noise Distribution by Hour

Between 28/09/2017 00:00:00 and 28/09/2017 23:59:59 (Local Time)

Day	Aircraft Events	Total LDEN dB (A)	Aircraft LDEN dB(A)	Background LDEN dB(A)	Total LDay dB(A)	Total LEvening dB(A)	Total LNight dB (A)
28/09/17 0:00	3	78.9	78.7	65.0	-	-	78.9
28/09/17 1:00	-	59.5	-	59.6	-	-	59.5
28/09/17 2:00	-	58.7	-	58.7	-	-	58.7
28/09/17 3:00	-	58.5	-	58.5	-	-	58.5
28/09/17 4:00	-	56.1	-	56.1	-	-	56.1
28/09/17 5:00	-	59.4	-	59.4	-	-	59.4
28/09/17 6:00	11	81.9	81.4	72.2	-	-	81.9
28/09/17 7:00	4	64.3	60.9	61.8	64.3	-	-
28/09/17 8:00	4	69.7	62.2	68.9	69.7	-	-
28/09/17 9:00	1	66.6	47.1	66.6	66.6	-	-
28/09/17 10:00	9	72.2	70.0	68.4	72.2	-	-
28/09/17 11:00	4	76.1	65.4	75.8	76.1	-	-
28/09/17 12:00	7	70.5	68.1	67.1	70.5	-	-
28/09/17 13:00	5	71.1	68.9	67.1	71.1	-	-
28/09/17 14:00	6	74.7	70.2	72.7	74.7	-	-
28/09/17 15:00	11	72.2	71.8	61.8	72.2	-	-
28/09/17 16:00	12	70.1	67.8	66.3	70.1	-	-
28/09/17 17:00	8	70.2	64.9	68.7	70.2	-	-
28/09/17 18:00	10	70.3	66.9	67.7	70.3	-	-
28/09/17 19:00	7	78.4	72.7	77.0	-	78.4	-
28/09/17 20:00	8	74.7	73.7	67.6	-	74.7	-
28/09/17 21:00	1	76.5	62.9	76.4	-	76.5	-
28/09/17 22:00	3	75.8	74.2	70.8	-	75.8	-
28/09/17 23:00	4	83.3	77.8	81.8	-	-	83.3
	<b>118</b>	<b>75.3</b>	<b>73.4</b>	<b>72.1</b>	<b>71.7</b>	<b>76.6</b>	<b>77.5</b>





## Luxembourg Airport Noise Distribution by Hour

Between 28/09/2017 00:00:00 and 28/09/2017 23:59:59 (Local Time)

Day	Aircraft Events	Total LDEN dB (A)	Aircraft LDEN dB(A)	Background LDEN dB(A)	Total LDay dB(A)	Total LEvening dB(A)	Total LNight dB (A)
28/09/17 0:00	1	73.3	72.7	65.4	-	-	73.3
28/09/17 1:00	-	63.9	-	64.5	-	-	63.9
28/09/17 2:00	-	63.1	-	63.7	-	-	63.1
28/09/17 3:00	-	63.8	-	63.9	-	-	63.8
28/09/17 4:00	-	66.1	-	66.5	-	-	66.1
28/09/17 5:00	-	69.8	-	70.9	-	-	69.8
28/09/17 6:00	5	78.1	75.4	77.0	-	-	78.1
28/09/17 7:00	-	63.3	-	66.2	63.3	-	-
28/09/17 8:00	6	65.3	61.6	67.5	65.3	-	-
28/09/17 9:00	1	65.4	62.9	62.0	65.4	-	-
28/09/17 10:00	10	66.7	65.3	61.7	66.7	-	-
28/09/17 11:00	5	63.5	58.8	61.9	63.5	-	-
28/09/17 12:00	9	64.0	61.2	61.1	64.0	-	-
28/09/17 13:00	7	66.5	64.6	62.5	66.5	-	-
28/09/17 14:00	12	71.5	70.8	64.1	71.5	-	-
28/09/17 15:00	13	69.5	68.7	62.4	69.5	-	-
28/09/17 16:00	9	64.1	60.3	62.1	64.1	-	-
28/09/17 17:00	11	63.6	60.6	60.8	63.6	-	-
28/09/17 18:00	9	66.6	65.3	61.1	66.6	-	-
28/09/17 19:00	7	69.3	67.3	65.1	-	69.3	-
28/09/17 20:00	3	70.8	69.9	63.6	-	70.8	-
28/09/17 21:00	2	64.0	59.4	62.3	-	64.0	-
28/09/17 22:00	3	73.1	72.7	62.1	-	73.1	-
28/09/17 23:00	4	80.2	80.0	65.7	-	-	80.2
	<b>117</b>	<b>71.1</b>	<b>71.0</b>	<b>66.9</b>	<b>66.6</b>	<b>70.4</b>	<b>74.2</b>

Location: NDB-Hamm NMT # 4

