

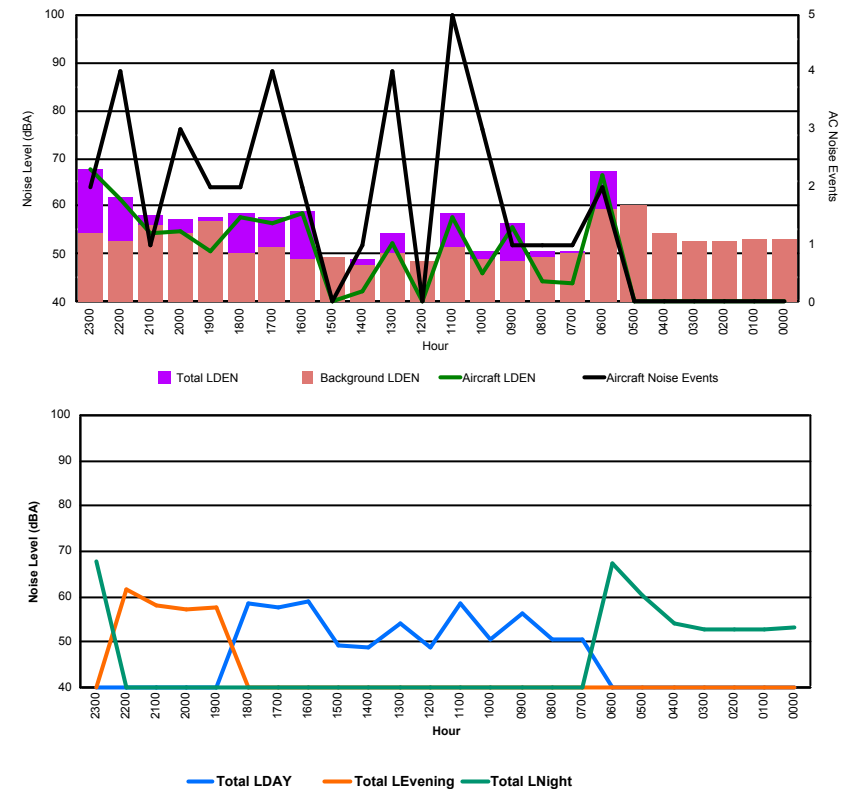


Luxembourg Airport Noise Distribution by Hour

Between 27/09/2017 00:00:00 and 27/09/2017 23:59:59 (Local Time)

Day	Aircraft Events	Total LDEN dB (A)	Aircraft LDEN dB(A)	Background LDEN dB(A)	Total LDay dB(A)	Total LEvening dB(A)	Total LNight dB (A)
27/09/17 0:00	-	53.3	-	53.3	-	-	53.3
27/09/17 1:00	-	53.0	-	53.0	-	-	53.0
27/09/17 2:00	-	52.6	-	52.6	-	-	52.6
27/09/17 3:00	-	52.7	-	52.7	-	-	52.7
27/09/17 4:00	-	54.1	-	54.2	-	-	54.1
27/09/17 5:00	-	60.3	-	60.4	-	-	60.3
27/09/17 6:00	2	67.3	66.6	59.2	-	-	67.3
27/09/17 7:00	1	50.8	43.9	50.0	50.8	-	-
27/09/17 8:00	1	50.5	44.2	49.4	50.5	-	-
27/09/17 9:00	1	56.5	55.7	48.7	56.5	-	-
27/09/17 10:00	3	50.7	46.2	48.9	50.7	-	-
27/09/17 11:00	5	58.6	57.8	51.3	58.6	-	-
27/09/17 12:00	-	48.7	-	48.7	48.7	-	-
27/09/17 13:00	4	54.2	52.1	50.0	54.2	-	-
27/09/17 14:00	1	48.9	42.2	47.9	48.9	-	-
27/09/17 15:00	-	49.3	-	49.4	49.3	-	-
27/09/17 16:00	2	59.0	58.6	49.1	59.0	-	-
27/09/17 17:00	4	57.5	56.3	51.3	57.5	-	-
27/09/17 18:00	2	58.6	57.9	50.1	58.6	-	-
27/09/17 19:00	2	57.7	50.8	56.8	-	57.7	-
27/09/17 20:00	3	57.4	54.7	54.2	-	57.4	-
27/09/17 21:00	1	58.2	54.2	56.0	-	58.2	-
27/09/17 22:00	4	61.8	61.3	52.6	-	61.8	-
27/09/17 23:00	2	67.9	67.7	54.5	-	-	67.9
	38	59.4	59.9	53.8	55.3	59.2	62.3

Location: Roodt/Syr NMT # 1

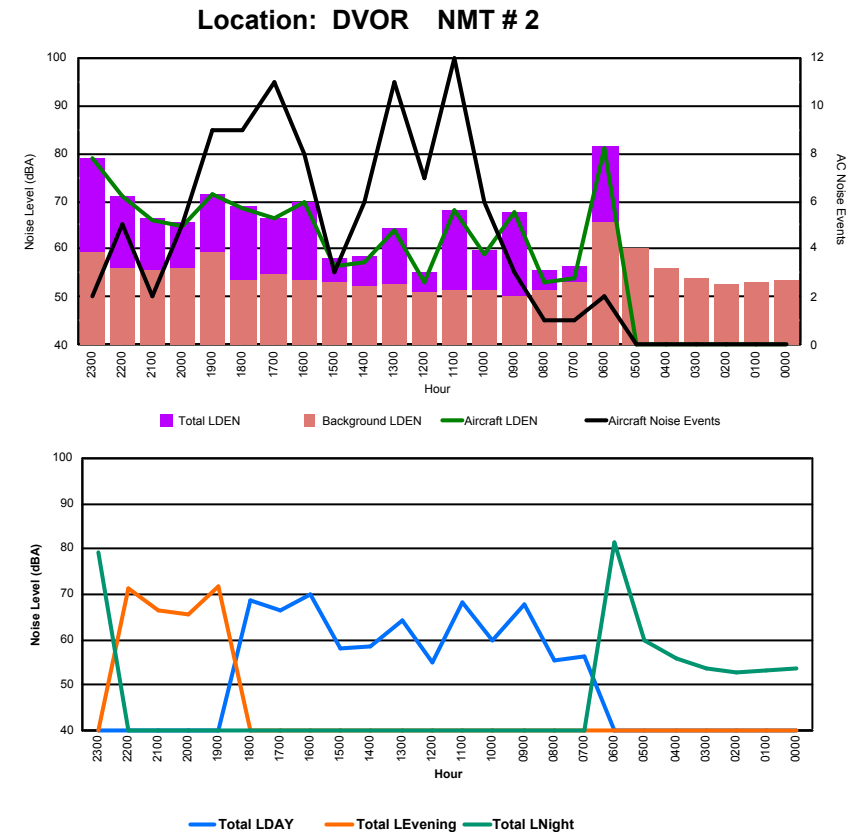




Luxembourg Airport Noise Distribution by Hour

Between 27/09/2017 00:00:00 and 27/09/2017 23:59:59 (Local Time)

Day	Aircraft Events	Total LDEN dB (A)	Aircraft LDEN dB(A)	Background LDEN dB(A)	Total LDay dB(A)	Total LEvening dB(A)	Total LNight dB (A)
27/09/17 0:00	-	53.7	-	53.7	-	-	53.7
27/09/17 1:00	-	53.2	-	53.2	-	-	53.2
27/09/17 2:00	-	52.7	-	52.7	-	-	52.7
27/09/17 3:00	-	53.8	-	53.8	-	-	53.8
27/09/17 4:00	-	55.9	-	55.9	-	-	55.9
27/09/17 5:00	-	60.0	-	60.0	-	-	60.0
27/09/17 6:00	2	81.3	81.1	65.5	-	-	81.3
27/09/17 7:00	1	56.5	54.0	53.0	56.5	-	-
27/09/17 8:00	1	55.5	53.3	51.6	55.5	-	-
27/09/17 9:00	3	67.9	67.9	50.3	67.9	-	-
27/09/17 10:00	6	59.7	59.1	51.4	59.7	-	-
27/09/17 11:00	12	68.3	68.2	51.6	68.3	-	-
27/09/17 12:00	7	55.1	53.0	51.2	55.1	-	-
27/09/17 13:00	11	64.4	64.1	52.5	64.4	-	-
27/09/17 14:00	6	58.4	57.2	52.3	58.4	-	-
27/09/17 15:00	3	58.1	56.5	53.2	58.1	-	-
27/09/17 16:00	8	69.9	69.8	53.5	69.9	-	-
27/09/17 17:00	11	66.6	66.4	54.6	66.6	-	-
27/09/17 18:00	9	68.8	68.7	53.4	68.8	-	-
27/09/17 19:00	9	71.6	71.3	59.4	-	71.6	-
27/09/17 20:00	5	65.5	64.9	56.0	-	65.5	-
27/09/17 21:00	2	66.5	66.1	55.7	-	66.5	-
27/09/17 22:00	5	71.2	71.1	56.2	-	71.2	-
27/09/17 23:00	2	79.1	79.0	59.4	-	-	79.1
	103	70.9	71.9	56.6	65.3	69.5	74.4

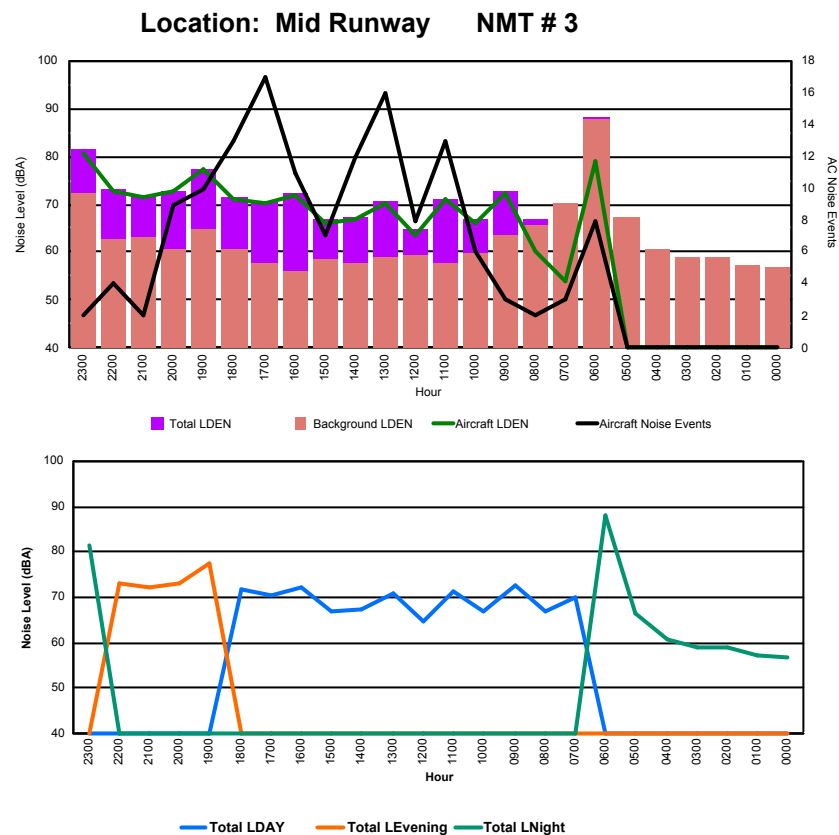




Luxembourg Airport Noise Distribution by Hour

Between 27/09/2017 00:00:00 and 27/09/2017 23:59:59 (Local Time)

Day	Aircraft Events	Total LDEN dB (A)	Aircraft LDEN dB(A)	Background LDEN dB(A)	Total LDay dB(A)	Total LEvening dB(A)	Total LNight dB (A)
27/09/17 0:00	-	56.8	-	56.8	-	-	56.8
27/09/17 1:00	-	57.2	-	57.3	-	-	57.2
27/09/17 2:00	-	58.8	-	58.8	-	-	58.8
27/09/17 3:00	-	59.1	-	59.1	-	-	59.1
27/09/17 4:00	-	60.8	-	60.8	-	-	60.8
27/09/17 5:00	-	66.4	-	67.1	-	-	66.4
27/09/17 6:00	8	88.1	78.9	87.6	-	-	88.1
27/09/17 7:00	3	70.2	54.1	70.2	70.2	-	-
27/09/17 8:00	2	66.9	60.3	65.8	66.9	-	-
27/09/17 9:00	3	72.7	72.2	63.6	72.7	-	-
27/09/17 10:00	6	66.9	66.0	59.7	66.9	-	-
27/09/17 11:00	13	71.2	71.0	57.6	71.2	-	-
27/09/17 12:00	8	64.8	63.5	59.2	64.8	-	-
27/09/17 13:00	16	70.7	70.4	58.8	70.7	-	-
27/09/17 14:00	12	67.2	66.7	57.7	67.2	-	-
27/09/17 15:00	7	66.7	66.1	58.4	66.7	-	-
27/09/17 16:00	11	72.1	72.0	56.2	72.1	-	-
27/09/17 17:00	17	70.6	70.3	57.8	70.6	-	-
27/09/17 18:00	13	71.6	71.2	60.5	71.6	-	-
27/09/17 19:00	10	77.5	77.3	64.7	-	77.5	-
27/09/17 20:00	9	72.9	72.7	60.5	-	72.9	-
27/09/17 21:00	2	72.0	71.4	63.0	-	72.0	-
27/09/17 22:00	4	73.0	72.7	62.6	-	73.0	-
27/09/17 23:00	2	81.3	80.7	72.5	-	-	81.3
	146	76.3	73.4	74.2	70.0	74.5	79.9





Luxembourg Airport Noise Distribution by Hour

Between 27/09/2017 00:00:00 and 27/09/2017 23:59:59 (Local Time)

Day	Aircraft Events	Total LDEN dB (A)	Aircraft LDEN dB(A)	Background LDEN dB(A)	Total LDay dB(A)	Total LEvening dB(A)	Total LNight dB (A)
27/09/17 0:00	-	66.2	-	67.3	-	-	66.2
27/09/17 1:00	-	64.8	-	65.5	-	-	64.8
27/09/17 2:00	-	63.3	-	63.9	-	-	63.3
27/09/17 3:00	-	65.0	-	65.3	-	-	65.0
27/09/17 4:00	-	66.6	-	67.2	-	-	66.6
27/09/17 5:00	-	69.5	-	71.1	-	-	69.5
27/09/17 6:00	14	82.2	81.9	77.0	-	-	82.2
27/09/17 7:00	5	69.1	67.6	67.4	69.1	-	-
27/09/17 8:00	3	66.9	63.6	66.7	66.9	-	-
27/09/17 9:00	2	66.9	49.7	67.0	66.9	-	-
27/09/17 10:00	-	65.7	-	65.9	65.7	-	-
27/09/17 11:00	-	63.4	-	63.5	63.4	-	-
27/09/17 12:00	2	67.7	48.0	67.7	67.7	-	-
27/09/17 13:00	7	68.5	62.2	67.5	68.5	-	-
27/09/17 14:00	1	68.6	61.7	67.7	68.6	-	-
27/09/17 15:00	4	64.3	57.6	63.4	64.3	-	-
27/09/17 16:00	1	64.1	55.6	63.6	64.1	-	-
27/09/17 17:00	4	63.0	56.9	62.0	63.0	-	-
27/09/17 18:00	4	66.9	59.1	66.1	66.9	-	-
27/09/17 19:00	3	73.0	68.1	71.4	-	73.0	-
27/09/17 20:00	1	66.1	54.5	65.8	-	66.1	-
27/09/17 21:00	3	72.4	64.2	71.8	-	72.4	-
27/09/17 22:00	2	70.4	62.5	69.8	-	70.4	-
27/09/17 23:00	1	76.6	66.7	76.1	-	-	76.6
	57	71.6	70.6	69.5	66.7	71.2	74.7

Location: NDB-Hamm NMT # 4

