

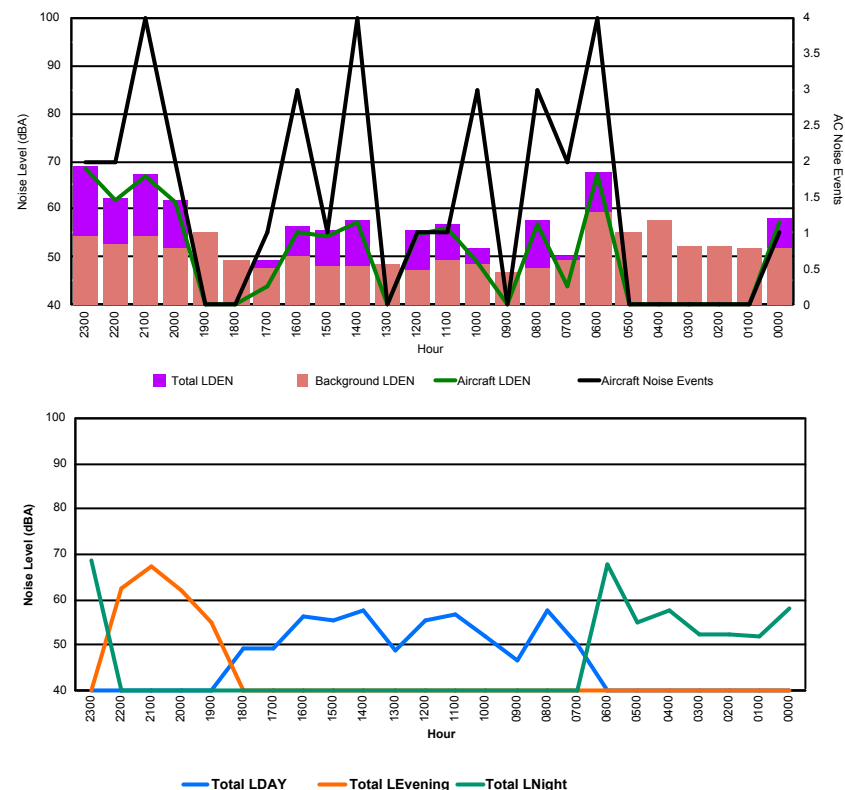


## Luxembourg Airport Noise Distribution by Hour

Between 23/09/2017 00:00:00 and 23/09/2017 23:59:59 (Local Time)

Day	Aircraft Events	Total LDEN dB (A)	Aircraft LDEN dB(A)	Background LDEN dB(A)	Total LDay dB(A)	Total LEvening dB(A)	Total LNight dB (A)
23/09/17 0:00	1	58.3	57.2	51.7	-	-	58.3
23/09/17 1:00	-	51.8	-	51.8	-	-	51.8
23/09/17 2:00	-	52.2	-	52.2	-	-	52.2
23/09/17 3:00	-	52.3	-	52.3	-	-	52.3
23/09/17 4:00	-	57.8	-	57.9	-	-	57.8
23/09/17 5:00	-	54.9	-	55.0	-	-	54.9
23/09/17 6:00	4	67.9	67.3	59.3	-	-	67.9
23/09/17 7:00	2	50.2	44.0	49.2	50.2	-	-
23/09/17 8:00	3	57.5	57.0	47.7	57.5	-	-
23/09/17 9:00	-	46.7	-	46.7	46.7	-	-
23/09/17 10:00	3	51.7	49.0	48.5	51.7	-	-
23/09/17 11:00	1	56.9	56.1	49.2	56.9	-	-
23/09/17 12:00	1	55.5	54.8	47.1	55.5	-	-
23/09/17 13:00	-	48.7	-	48.7	48.7	-	-
23/09/17 14:00	4	57.8	57.3	48.0	57.8	-	-
23/09/17 15:00	1	55.5	54.5	48.3	55.5	-	-
23/09/17 16:00	3	56.3	55.1	50.0	56.3	-	-
23/09/17 17:00	1	49.2	44.1	47.6	49.2	-	-
23/09/17 18:00	-	49.2	-	49.3	49.2	-	-
23/09/17 19:00	-	55.0	-	55.1	-	55.0	-
23/09/17 20:00	2	61.9	61.4	51.8	-	61.9	-
23/09/17 21:00	4	67.2	67.0	54.2	-	67.2	-
23/09/17 22:00	2	62.4	62.0	52.7	-	62.4	-
23/09/17 23:00	2	68.8	68.7	54.5	-	-	68.8
	<b>34</b>	<b>60.7</b>	<b>62.0</b>	<b>52.7</b>	<b>54.4</b>	<b>63.4</b>	<b>63.0</b>

Location: Roodt/Syr NMT # 1



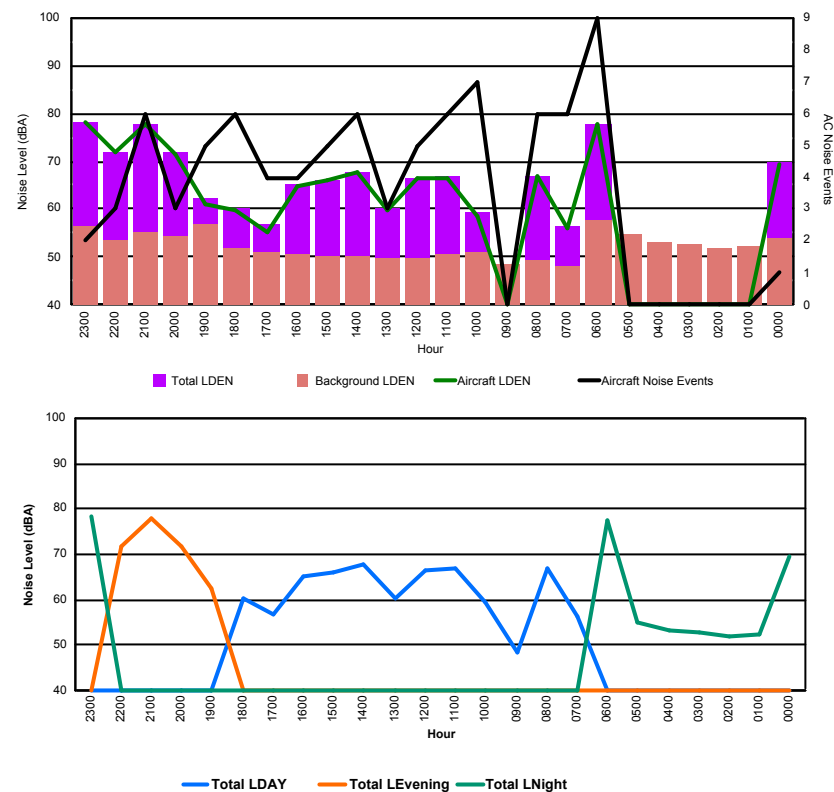


## Luxembourg Airport Noise Distribution by Hour

Between 23/09/2017 00:00:00 and 23/09/2017 23:59:59 (Local Time)

Day	Aircraft Events	Total LDEN dB (A)	Aircraft LDEN dB(A)	Background LDEN dB(A)	Total LDay dB(A)	Total LEvening dB(A)	Total LNight dB (A)
23/09/17 0:00	1	69.6	69.4	54.0	-	-	69.6
23/09/17 1:00	-	52.3	-	52.3	-	-	52.3
23/09/17 2:00	-	52.0	-	52.0	-	-	52.0
23/09/17 3:00	-	52.9	-	52.9	-	-	52.9
23/09/17 4:00	-	53.1	-	53.1	-	-	53.1
23/09/17 5:00	-	54.8	-	54.8	-	-	54.8
23/09/17 6:00	9	77.6	77.6	57.7	-	-	77.6
23/09/17 7:00	6	56.5	55.9	48.2	56.5	-	-
23/09/17 8:00	6	66.9	66.7	49.4	66.9	-	-
23/09/17 9:00	-	48.5	-	48.5	48.5	-	-
23/09/17 10:00	7	59.3	58.6	51.1	59.3	-	-
23/09/17 11:00	6	66.7	66.6	50.8	66.7	-	-
23/09/17 12:00	5	66.6	66.5	49.7	66.6	-	-
23/09/17 13:00	3	60.1	59.6	49.7	60.1	-	-
23/09/17 14:00	6	67.7	67.6	50.0	67.7	-	-
23/09/17 15:00	5	66.1	66.0	50.1	66.1	-	-
23/09/17 16:00	4	65.0	64.8	50.7	65.0	-	-
23/09/17 17:00	4	56.7	55.3	51.2	56.7	-	-
23/09/17 18:00	6	60.4	59.8	51.7	60.4	-	-
23/09/17 19:00	5	62.3	61.0	56.7	-	62.3	-
23/09/17 20:00	3	71.7	71.6	54.5	-	71.7	-
23/09/17 21:00	6	77.8	77.7	55.3	-	77.8	-
23/09/17 22:00	3	71.8	71.7	53.4	-	71.8	-
23/09/17 23:00	2	78.2	78.2	56.6	-	-	78.2
	<b>87</b>	<b>70.3</b>	<b>71.5</b>	<b>53.1</b>	<b>64.2</b>	<b>73.6</b>	<b>72.2</b>

Location: DVOR NMT # 2



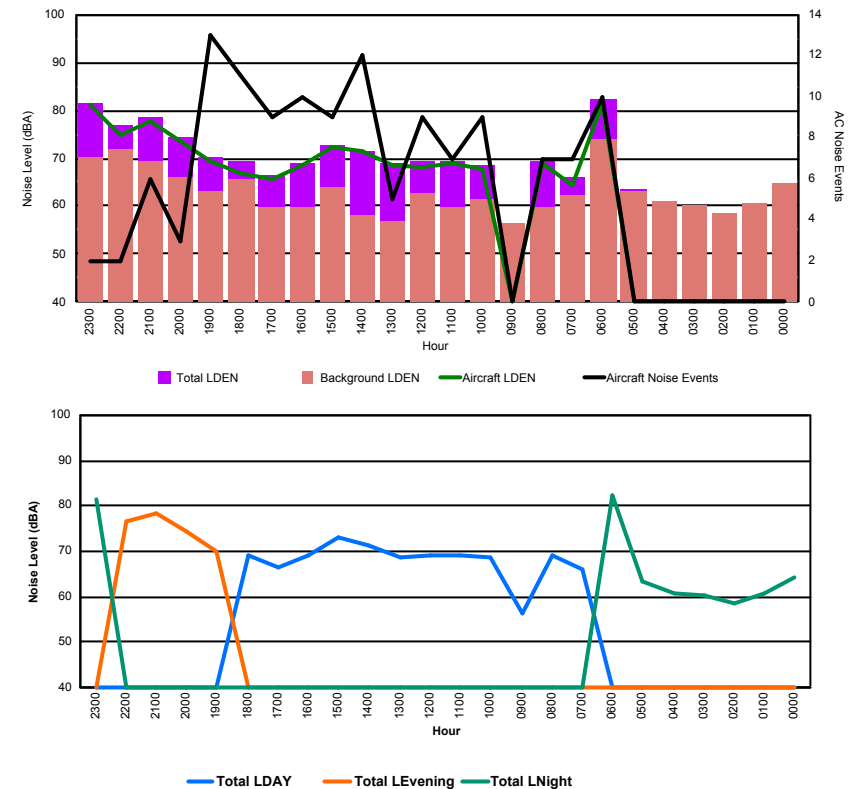


## Luxembourg Airport Noise Distribution by Hour

Between 23/09/2017 00:00:00 and 23/09/2017 23:59:59 (Local Time)

Day	Aircraft Events	Total LDEN dB (A)	Aircraft LDEN dB(A)	Background LDEN dB(A)	Total LDay dB(A)	Total LEvening dB(A)	Total LNight dB (A)
23/09/17 0:00	-	64.4	-	64.6	-	-	64.4
23/09/17 1:00	-	60.6	-	60.6	-	-	60.6
23/09/17 2:00	-	58.5	-	58.5	-	-	58.5
23/09/17 3:00	-	60.2	-	60.2	-	-	60.2
23/09/17 4:00	-	60.9	-	60.9	-	-	60.9
23/09/17 5:00	-	63.4	-	63.2	-	-	63.4
23/09/17 6:00	10	82.2	81.6	73.9	-	-	82.2
23/09/17 7:00	7	66.2	64.2	62.3	66.2	-	-
23/09/17 8:00	7	69.3	68.9	59.6	69.3	-	-
23/09/17 9:00	-	56.3	-	56.4	56.3	-	-
23/09/17 10:00	9	68.5	67.7	61.3	68.5	-	-
23/09/17 11:00	7	69.3	68.8	59.6	69.3	-	-
23/09/17 12:00	9	69.3	68.3	62.7	69.3	-	-
23/09/17 13:00	5	68.9	68.6	56.9	68.9	-	-
23/09/17 14:00	12	71.5	71.3	58.0	71.5	-	-
23/09/17 15:00	9	72.9	72.3	63.9	72.9	-	-
23/09/17 16:00	10	69.0	68.6	59.7	69.0	-	-
23/09/17 17:00	9	66.5	65.5	59.6	66.5	-	-
23/09/17 18:00	11	69.3	66.9	65.5	69.3	-	-
23/09/17 19:00	13	70.1	69.3	63.0	-	70.1	-
23/09/17 20:00	3	74.4	73.7	65.9	-	74.4	-
23/09/17 21:00	6	78.4	77.9	69.4	-	78.4	-
23/09/17 22:00	2	76.7	75.0	71.9	-	76.7	-
23/09/17 23:00	2	81.3	80.9	70.3	-	-	81.3
	<b>131</b>	<b>73.7</b>	<b>74.5</b>	<b>65.8</b>	<b>69.2</b>	<b>75.8</b>	<b>75.9</b>

Location: Mid Runway NMT # 3





## Luxembourg Airport Noise Distribution by Hour

Between 23/09/2017 00:00:00 and 23/09/2017 23:59:59 (Local Time)

Day	Aircraft Events	Total LDEN dB (A)	Aircraft LDEN dB(A)	Background LDEN dB(A)	Total LDay dB(A)	Total LEvening dB(A)	Total LNight dB (A)
23/09/17 0:00	-	67.6	-	68.8	-	-	67.6
23/09/17 1:00	-	65.5	-	66.4	-	-	65.5
23/09/17 2:00	-	64.3	-	65.3	-	-	64.3
23/09/17 3:00	-	65.3	-	65.6	-	-	65.3
23/09/17 4:00	-	65.6	-	66.0	-	-	65.6
23/09/17 5:00	-	67.1	-	67.8	-	-	67.1
23/09/17 6:00	6	74.0	61.9	74.4	-	-	74.0
23/09/17 7:00	3	67.6	49.6	67.8	67.6	-	-
23/09/17 8:00	3	61.2	48.4	62.6	61.2	-	-
23/09/17 9:00	-	63.9	-	64.1	63.9	-	-
23/09/17 10:00	3	66.8	49.2	66.9	66.8	-	-
23/09/17 11:00	-	64.3	-	64.4	64.3	-	-
23/09/17 12:00	1	70.5	57.4	70.4	70.5	-	-
23/09/17 13:00	1	63.6	44.9	63.6	63.6	-	-
23/09/17 14:00	2	63.9	59.5	62.1	63.9	-	-
23/09/17 15:00	1	65.2	53.3	65.0	65.2	-	-
23/09/17 16:00	3	62.1	56.2	60.9	62.1	-	-
23/09/17 17:00	12	68.5	67.8	60.5	68.5	-	-
23/09/17 18:00	8	68.3	67.5	60.9	68.3	-	-
23/09/17 19:00	9	70.6	69.0	65.7	-	70.6	-
23/09/17 20:00	3	69.2	67.1	65.2	-	69.2	-
23/09/17 21:00	3	70.6	69.2	65.2	-	70.6	-
23/09/17 22:00	2	69.7	62.3	69.0	-	69.7	-
23/09/17 23:00	3	76.8	75.5	71.2	-	-	76.8
	<b>63</b>	<b>69.0</b>	<b>66.7</b>	<b>67.3</b>	<b>66.3</b>	<b>70.1</b>	<b>70.8</b>

