

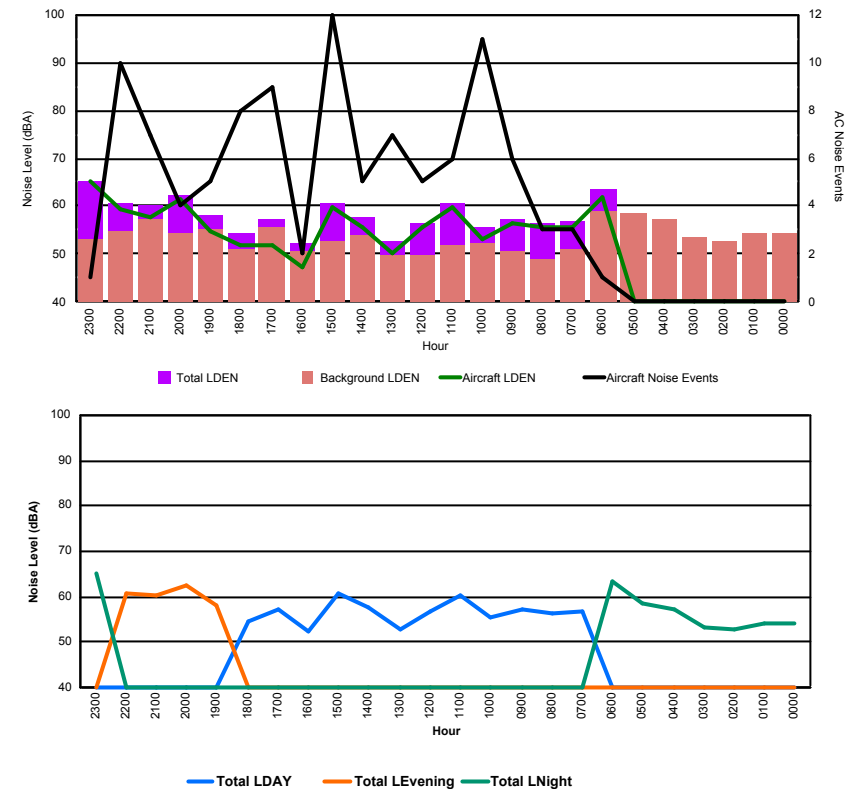


Luxembourg Airport Noise Distribution by Hour

Between 20/09/2017 00:00:00 and 20/09/2017 23:59:59 (Local Time)

Day	Aircraft Events	Total LDEN dB (A)	Aircraft LDEN dB(A)	Background LDEN dB(A)	Total LDay dB(A)	Total LEvening dB(A)	Total LNight dB (A)
20/09/17 0:00	-	54.3	-	54.4	-	-	54.3
20/09/17 1:00	-	54.2	-	54.3	-	-	54.2
20/09/17 2:00	-	52.9	-	52.9	-	-	52.9
20/09/17 3:00	-	53.3	-	53.4	-	-	53.3
20/09/17 4:00	-	57.4	-	57.4	-	-	57.4
20/09/17 5:00	-	58.6	-	58.6	-	-	58.6
20/09/17 6:00	1	63.6	61.8	59.1	-	-	63.6
20/09/17 7:00	3	56.8	55.5	51.2	56.8	-	-
20/09/17 8:00	3	56.4	55.5	48.8	56.4	-	-
20/09/17 9:00	6	57.3	56.3	50.8	57.3	-	-
20/09/17 10:00	11	55.5	53.1	52.2	55.5	-	-
20/09/17 11:00	6	60.5	59.9	52.0	60.5	-	-
20/09/17 12:00	5	56.6	55.7	49.6	56.6	-	-
20/09/17 13:00	7	52.9	50.1	49.9	52.9	-	-
20/09/17 14:00	5	57.8	55.6	53.9	57.8	-	-
20/09/17 15:00	12	60.6	59.9	52.5	60.6	-	-
20/09/17 16:00	2	52.3	47.4	50.7	52.3	-	-
20/09/17 17:00	9	57.1	51.9	55.6	57.1	-	-
20/09/17 18:00	8	54.4	51.9	51.0	54.4	-	-
20/09/17 19:00	5	58.0	54.9	55.4	-	58.0	-
20/09/17 20:00	4	62.3	61.6	54.5	-	62.3	-
20/09/17 21:00	7	60.4	57.8	57.3	-	60.4	-
20/09/17 22:00	10	60.6	59.5	54.8	-	60.6	-
20/09/17 23:00	1	65.3	65.0	53.2	-	-	65.3
	105	58.9	58.4	54.4	57.2	60.6	59.9

Location: Roodt/Syr NMT # 1



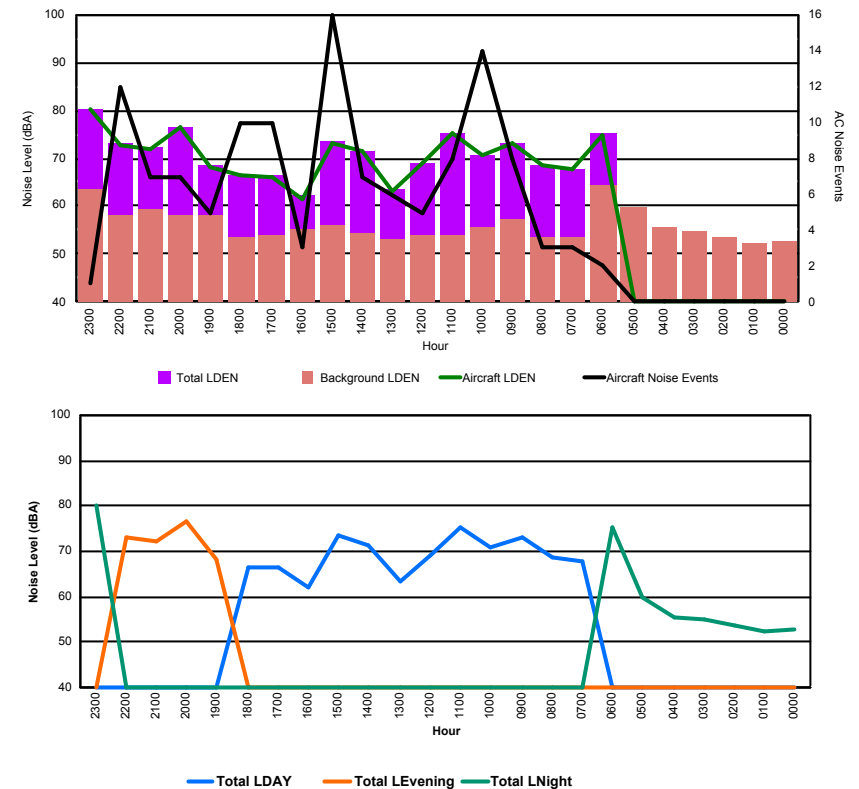


Luxembourg Airport Noise Distribution by Hour

Between 20/09/2017 00:00:00 and 20/09/2017 23:59:59 (Local Time)

Day	Aircraft Events	Total LDEN dB (A)	Aircraft LDEN dB(A)	Background LDEN dB(A)	Total LDay dB(A)	Total LEvening dB(A)	Total LNight dB (A)
20/09/17 0:00	-	52.7	-	52.7	-	-	52.7
20/09/17 1:00	-	52.4	-	52.4	-	-	52.4
20/09/17 2:00	-	53.7	-	53.7	-	-	53.7
20/09/17 3:00	-	54.9	-	54.9	-	-	54.9
20/09/17 4:00	-	55.6	-	55.6	-	-	55.6
20/09/17 5:00	-	59.7	-	59.7	-	-	59.7
20/09/17 6:00	2	75.3	75.0	64.2	-	-	75.3
20/09/17 7:00	3	67.9	67.7	53.6	67.9	-	-
20/09/17 8:00	3	68.5	68.4	53.4	68.5	-	-
20/09/17 9:00	8	73.1	73.0	57.1	73.1	-	-
20/09/17 10:00	14	70.8	70.7	55.8	70.8	-	-
20/09/17 11:00	8	75.2	75.2	54.0	75.2	-	-
20/09/17 12:00	5	69.0	68.9	53.9	69.0	-	-
20/09/17 13:00	6	63.4	63.0	53.0	63.4	-	-
20/09/17 14:00	7	71.4	71.3	54.3	71.4	-	-
20/09/17 15:00	16	73.4	73.3	56.1	73.4	-	-
20/09/17 16:00	3	62.2	61.3	55.0	62.2	-	-
20/09/17 17:00	10	66.3	66.1	54.1	66.3	-	-
20/09/17 18:00	10	66.5	66.3	53.4	66.5	-	-
20/09/17 19:00	5	68.4	68.0	58.1	-	68.4	-
20/09/17 20:00	7	76.6	76.5	58.1	-	76.6	-
20/09/17 21:00	7	72.1	71.8	59.3	-	72.1	-
20/09/17 22:00	12	73.0	72.9	58.0	-	73.0	-
20/09/17 23:00	1	80.3	80.2	63.5	-	-	80.3
	127	71.8	72.9	57.5	70.5	73.5	72.5

Location: DVOR NMT # 2

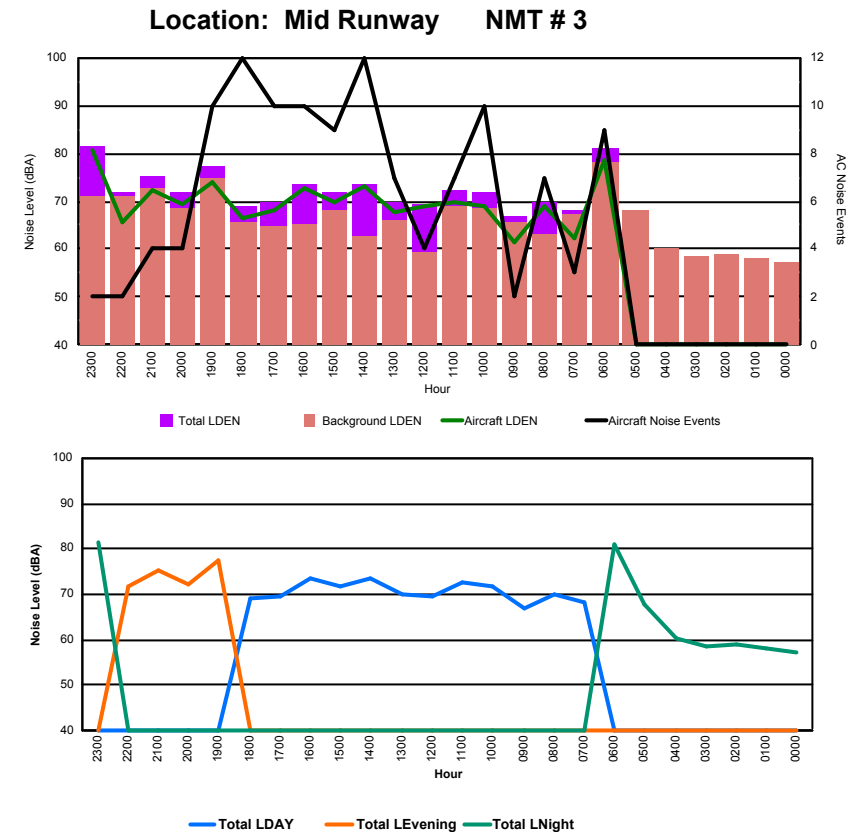




Luxembourg Airport Noise Distribution by Hour

Between 20/09/2017 00:00:00 and 20/09/2017 23:59:59 (Local Time)

Day	Aircraft Events	Total LDEN dB (A)	Aircraft LDEN dB(A)	Background LDEN dB(A)	Total LDay dB(A)	Total LEvening dB(A)	Total LNight dB (A)
20/09/17 0:00	-	57.4	-	57.4	-	-	57.4
20/09/17 1:00	-	58.3	-	58.3	-	-	58.3
20/09/17 2:00	-	58.8	-	58.9	-	-	58.8
20/09/17 3:00	-	58.5	-	58.5	-	-	58.5
20/09/17 4:00	-	60.3	-	60.3	-	-	60.3
20/09/17 5:00	-	67.7	-	68.2	-	-	67.7
20/09/17 6:00	9	81.2	78.7	78.0	-	-	81.2
20/09/17 7:00	3	68.3	62.3	67.1	68.3	-	-
20/09/17 8:00	7	69.8	68.8	63.1	69.8	-	-
20/09/17 9:00	2	67.0	61.4	65.7	67.0	-	-
20/09/17 10:00	10	71.8	69.1	68.5	71.8	-	-
20/09/17 11:00	7	72.5	69.9	68.9	72.5	-	-
20/09/17 12:00	4	69.4	69.0	59.4	69.4	-	-
20/09/17 13:00	7	69.9	67.8	65.9	69.9	-	-
20/09/17 14:00	12	73.4	73.0	62.7	73.4	-	-
20/09/17 15:00	9	71.8	69.6	68.0	71.8	-	-
20/09/17 16:00	10	73.4	72.7	65.1	73.4	-	-
20/09/17 17:00	10	69.7	68.0	64.7	69.7	-	-
20/09/17 18:00	12	69.0	66.4	65.8	69.0	-	-
20/09/17 19:00	10	77.3	73.9	74.7	-	77.3	-
20/09/17 20:00	4	72.0	69.3	68.7	-	72.0	-
20/09/17 21:00	4	75.4	72.2	72.7	-	75.4	-
20/09/17 22:00	2	71.9	65.7	70.9	-	71.9	-
20/09/17 23:00	2	81.3	80.8	71.0	-	-	81.3
	124	73.6	72.9	69.3	70.9	74.8	75.4





Luxembourg Airport Noise Distribution by Hour

Between 20/09/2017 00:00:00 and 20/09/2017 23:59:59 (Local Time)

Day	Aircraft Events	Total LDEN dB (A)	Aircraft LDEN dB(A)	Background LDEN dB(A)	Total LDay dB(A)	Total LEvening dB(A)	Total LNight dB (A)
20/09/17 0:00	-	64.5	-	65.4	-	-	64.5
20/09/17 1:00	-	62.0	-	62.4	-	-	62.0
20/09/17 2:00	-	61.4	-	61.8	-	-	61.4
20/09/17 3:00	-	63.4	-	63.5	-	-	63.4
20/09/17 4:00	-	65.1	-	65.4	-	-	65.1
20/09/17 5:00	-	68.2	-	69.4	-	-	68.2
20/09/17 6:00	14	75.8	74.7	72.3	-	-	75.8
20/09/17 7:00	8	62.8	59.9	64.2	62.8	-	-
20/09/17 8:00	7	65.6	64.1	63.4	65.6	-	-
20/09/17 9:00	1	60.5	50.3	60.1	60.5	-	-
20/09/17 10:00	8	66.3	65.0	60.5	66.3	-	-
20/09/17 11:00	12	67.5	66.7	60.2	67.5	-	-
20/09/17 12:00	5	68.0	67.2	59.9	68.0	-	-
20/09/17 13:00	7	64.8	63.4	59.6	64.8	-	-
20/09/17 14:00	8	69.8	69.3	60.1	69.8	-	-
20/09/17 15:00	6	70.2	69.8	59.8	70.2	-	-
20/09/17 16:00	13	68.3	67.7	59.8	68.3	-	-
20/09/17 17:00	7	65.9	64.8	59.5	65.9	-	-
20/09/17 18:00	9	63.1	60.8	59.7	63.1	-	-
20/09/17 19:00	8	73.9	73.5	64.4	-	73.9	-
20/09/17 20:00	3	64.7	59.0	63.4	-	64.7	-
20/09/17 21:00	5	73.0	72.5	63.3	-	73.0	-
20/09/17 22:00	1	65.5	60.7	63.8	-	65.5	-
20/09/17 23:00	2	79.3	79.0	68.0	-	-	79.3
	124	70.2	70.4	64.6	66.9	71.1	72.5

