

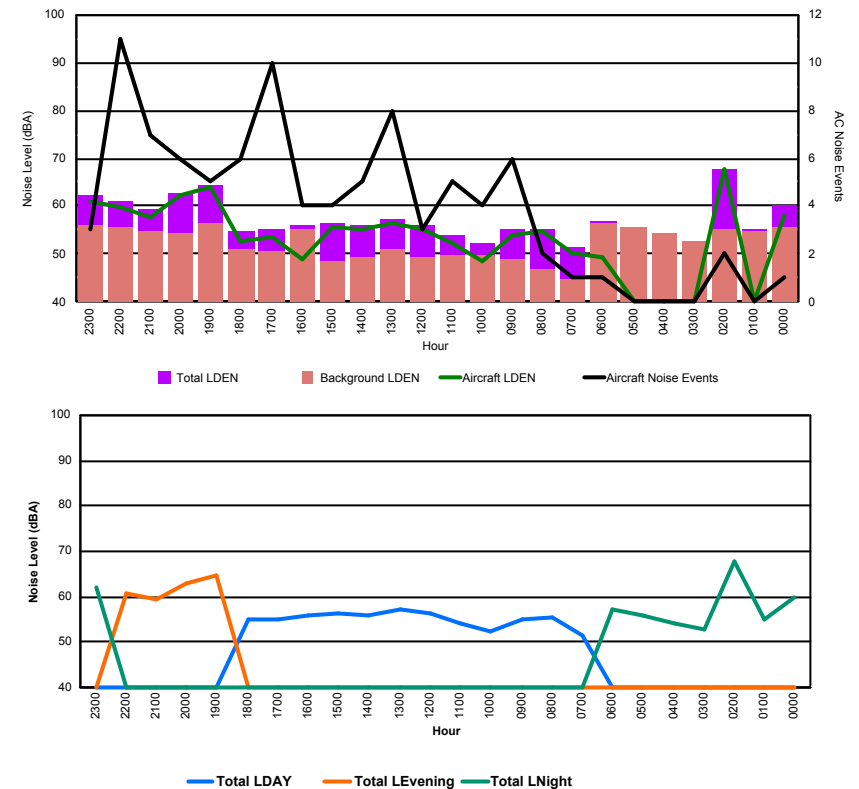


## Luxembourg Airport Noise Distribution by Hour

Between 17/09/2017 00:00:00 and 17/09/2017 23:59:59 (Local Time)

Day	Aircraft Events	Total LDEN dB (A)	Aircraft LDEN dB(A)	Background LDEN dB(A)	Total LDay dB(A)	Total LEvening dB(A)	Total LNight dB (A)
17/09/17 0:00	1	60.0	58.0	55.5	-	-	60.0
17/09/17 1:00	-	55.2	-	54.8	-	-	55.2
17/09/17 2:00	2	67.9	67.6	55.3	-	-	67.9
17/09/17 3:00	-	52.8	-	52.8	-	-	52.8
17/09/17 4:00	-	54.2	-	54.2	-	-	54.2
17/09/17 5:00	-	55.8	-	55.8	-	-	55.8
17/09/17 6:00	1	57.0	49.3	56.3	-	-	57.0
17/09/17 7:00	1	51.4	50.4	44.8	51.4	-	-
17/09/17 8:00	2	55.3	54.6	46.9	55.3	-	-
17/09/17 9:00	6	55.0	53.9	48.9	55.0	-	-
17/09/17 10:00	4	52.2	48.6	49.9	52.2	-	-
17/09/17 11:00	5	54.0	52.1	49.7	54.0	-	-
17/09/17 12:00	3	56.2	55.3	49.2	56.2	-	-
17/09/17 13:00	8	57.4	56.4	51.1	57.4	-	-
17/09/17 14:00	5	56.1	55.2	49.3	56.1	-	-
17/09/17 15:00	4	56.4	55.7	48.4	56.4	-	-
17/09/17 16:00	4	55.9	48.9	55.0	55.9	-	-
17/09/17 17:00	10	55.2	53.5	50.6	55.2	-	-
17/09/17 18:00	6	54.9	52.7	51.1	54.9	-	-
17/09/17 19:00	5	64.5	63.8	56.3	-	64.5	-
17/09/17 20:00	6	62.8	62.1	54.4	-	62.8	-
17/09/17 21:00	7	59.4	57.6	54.9	-	59.4	-
17/09/17 22:00	11	60.9	59.6	55.7	-	60.9	-
17/09/17 23:00	3	62.2	61.0	56.2	-	-	62.2
	<b>94</b>	<b>59.5</b>	<b>59.1</b>	<b>53.5</b>	<b>55.3</b>	<b>62.3</b>	<b>61.2</b>

Location: Roodt/Syr NMT # 1



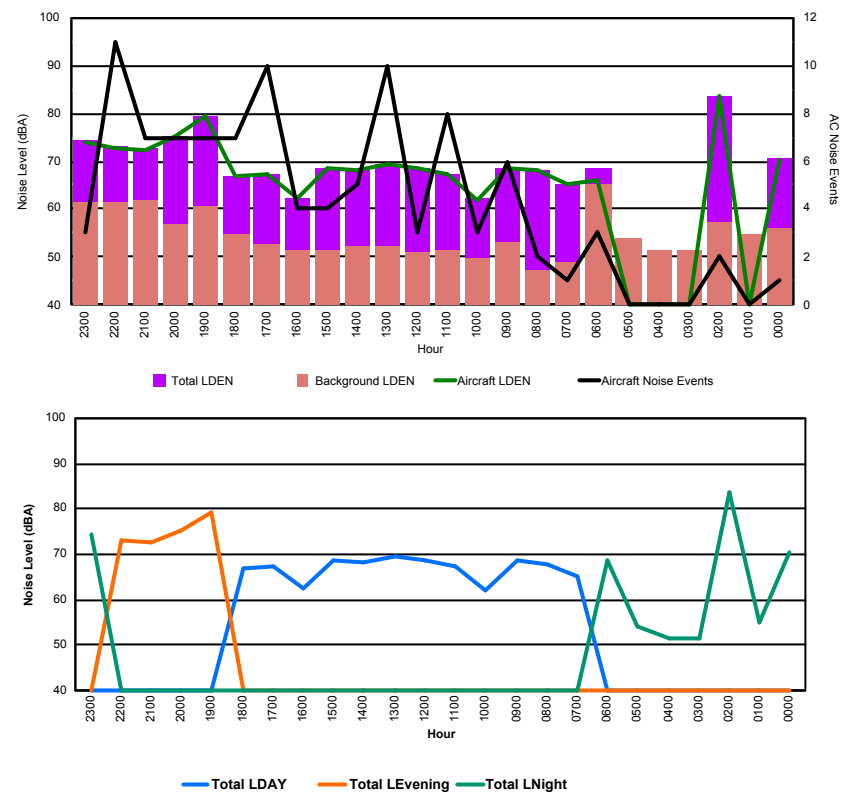


## Luxembourg Airport Noise Distribution by Hour

Between 17/09/2017 00:00:00 and 17/09/2017 23:59:59 (Local Time)

Day	Aircraft Events	Total LDEN dB (A)	Aircraft LDEN dB(A)	Background LDEN dB(A)	Total LDay dB(A)	Total LEvening dB(A)	Total LNight dB (A)
17/09/17 0:00	1	70.6	70.4	56.0	-	-	70.6
17/09/17 1:00	-	54.9	-	54.9	-	-	54.9
17/09/17 2:00	2	83.7	83.7	57.1	-	-	83.7
17/09/17 3:00	-	51.6	-	51.6	-	-	51.6
17/09/17 4:00	-	51.6	-	51.6	-	-	51.6
17/09/17 5:00	-	53.9	-	53.9	-	-	53.9
17/09/17 6:00	3	68.7	66.2	65.4	-	-	68.7
17/09/17 7:00	1	65.2	65.0	48.8	65.2	-	-
17/09/17 8:00	2	68.0	68.0	47.2	68.0	-	-
17/09/17 9:00	6	68.6	68.5	53.1	68.6	-	-
17/09/17 10:00	3	62.2	61.9	49.9	62.2	-	-
17/09/17 11:00	8	67.2	67.1	51.6	67.2	-	-
17/09/17 12:00	3	68.7	68.6	51.0	68.7	-	-
17/09/17 13:00	10	69.5	69.4	52.3	69.5	-	-
17/09/17 14:00	5	68.3	68.2	52.1	68.3	-	-
17/09/17 15:00	4	68.7	68.6	51.5	68.7	-	-
17/09/17 16:00	4	62.4	62.1	51.4	62.4	-	-
17/09/17 17:00	10	67.5	67.4	52.6	67.5	-	-
17/09/17 18:00	7	67.0	66.8	54.8	67.0	-	-
17/09/17 19:00	7	79.3	79.2	60.8	-	79.3	-
17/09/17 20:00	7	75.4	75.4	56.8	-	75.4	-
17/09/17 21:00	7	72.7	72.3	62.0	-	72.7	-
17/09/17 22:00	11	73.0	72.7	61.4	-	73.0	-
17/09/17 23:00	3	74.3	74.0	61.5	-	-	74.3
	<b>104</b>	<b>73.2</b>	<b>73.9</b>	<b>57.4</b>	<b>67.4</b>	<b>76.0</b>	<b>75.5</b>

Location: DVOR NMT # 2

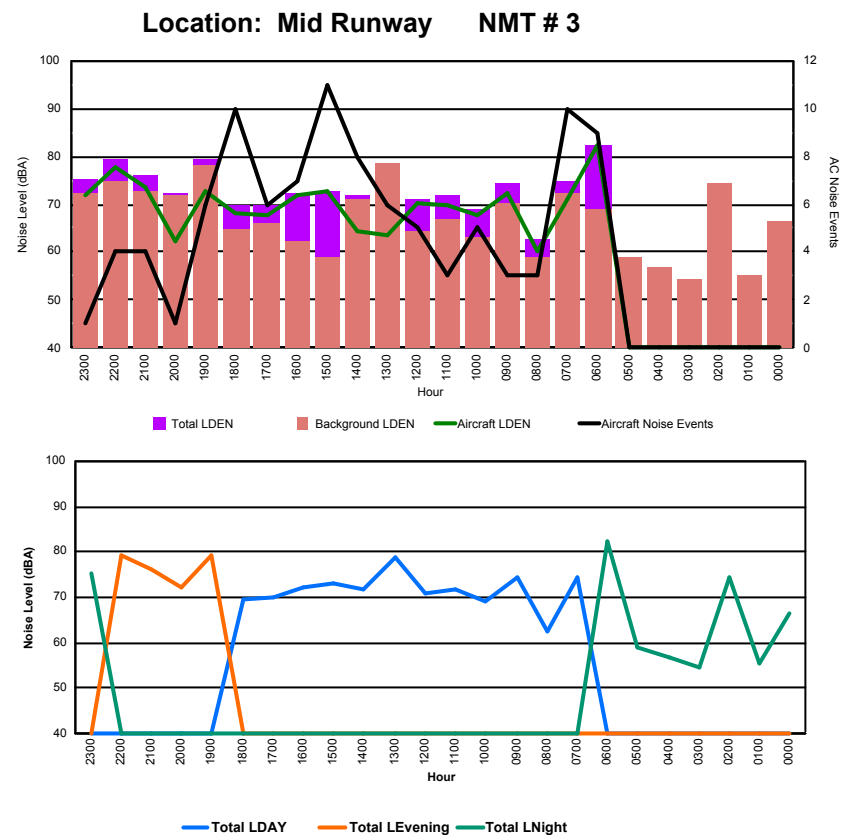




## Luxembourg Airport Noise Distribution by Hour

Between 17/09/2017 00:00:00 and 17/09/2017 23:59:59 (Local Time)

Day	Aircraft Events	Total LDEN dB (A)	Aircraft LDEN dB(A)	Background LDEN dB(A)	Total LDay dB(A)	Total LEvening dB(A)	Total LNight dB (A)
17/09/17 0:00	-	66.4	-	66.5	-	-	66.4
17/09/17 1:00	-	55.4	-	55.4	-	-	55.4
17/09/17 2:00	-	74.3	-	74.3	-	-	74.3
17/09/17 3:00	-	54.5	-	54.5	-	-	54.5
17/09/17 4:00	-	56.8	-	56.8	-	-	56.8
17/09/17 5:00	-	59.1	-	59.1	-	-	59.1
17/09/17 6:00	9	82.3	82.1	69.1	-	-	82.3
17/09/17 7:00	10	74.6	71.0	72.1	74.6	-	-
17/09/17 8:00	3	62.7	60.2	59.1	62.7	-	-
17/09/17 9:00	3	74.3	72.2	70.2	74.3	-	-
17/09/17 10:00	5	69.0	67.6	63.3	69.0	-	-
17/09/17 11:00	3	71.7	70.0	67.0	71.7	-	-
17/09/17 12:00	5	71.1	70.1	64.4	71.1	-	-
17/09/17 13:00	6	78.7	63.7	78.6	78.7	-	-
17/09/17 14:00	8	71.8	64.5	70.9	71.8	-	-
17/09/17 15:00	11	72.9	72.7	59.0	72.9	-	-
17/09/17 16:00	7	72.4	72.0	62.3	72.4	-	-
17/09/17 17:00	6	70.0	67.8	66.0	70.0	-	-
17/09/17 18:00	10	69.7	68.0	64.8	69.7	-	-
17/09/17 19:00	6	79.2	72.9	78.0	-	79.2	-
17/09/17 20:00	1	72.3	62.3	71.8	-	72.3	-
17/09/17 21:00	4	76.1	73.6	72.6	-	76.1	-
17/09/17 22:00	4	79.4	77.7	74.6	-	79.4	-
17/09/17 23:00	1	75.2	72.0	72.4	-	-	75.2
	<b>102</b>	<b>74.7</b>	<b>73.3</b>	<b>71.2</b>	<b>73.0</b>	<b>77.6</b>	<b>74.7</b>





## Luxembourg Airport Noise Distribution by Hour

Between 17/09/2017 00:00:00 and 17/09/2017 23:59:59 (Local Time)

Day	Aircraft Events	Total LDEN dB (A)	Aircraft LDEN dB(A)	Background LDEN dB(A)	Total LDay dB(A)	Total LEvening dB(A)	Total LNight dB (A)
17/09/17 0:00	-	68.0	-	69.7	-	-	68.0
17/09/17 1:00	-	66.2	-	67.5	-	-	66.2
17/09/17 2:00	-	64.8	-	65.8	-	-	64.8
17/09/17 3:00	-	63.0	-	63.0	-	-	63.0
17/09/17 4:00	-	62.7	-	62.8	-	-	62.7
17/09/17 5:00	-	65.3	-	65.6	-	-	65.3
17/09/17 6:00	9	78.5	78.3	65.8	-	-	78.5
17/09/17 7:00	10	70.8	70.7	54.7	70.8	-	-
17/09/17 8:00	3	56.7	50.6	55.8	56.7	-	-
17/09/17 9:00	4	70.9	70.7	57.4	70.9	-	-
17/09/17 10:00	6	62.1	59.8	58.5	62.1	-	-
17/09/17 11:00	4	67.2	66.5	58.9	67.2	-	-
17/09/17 12:00	6	66.0	65.2	58.7	66.0	-	-
17/09/17 13:00	5	61.8	59.8	57.7	61.8	-	-
17/09/17 14:00	7	61.4	58.3	58.6	61.4	-	-
17/09/17 15:00	8	67.8	67.2	58.7	67.8	-	-
17/09/17 16:00	3	70.4	70.1	58.5	70.4	-	-
17/09/17 17:00	5	66.2	65.3	59.0	66.2	-	-
17/09/17 18:00	11	63.0	60.5	59.7	63.0	-	-
17/09/17 19:00	7	70.3	69.2	64.1	-	70.3	-
17/09/17 20:00	2	64.2	58.5	62.9	-	64.2	-
17/09/17 21:00	5	72.4	72.0	62.2	-	72.4	-
17/09/17 22:00	6	76.8	76.6	61.8	-	76.8	-
17/09/17 23:00	1	73.7	73.1	65.1	-	-	73.7
	<b>102</b>	<b>70.3</b>	<b>70.7</b>	<b>63.1</b>	<b>67.1</b>	<b>72.9</b>	<b>71.6</b>

Location: NDB-Hamm NMT # 4

