

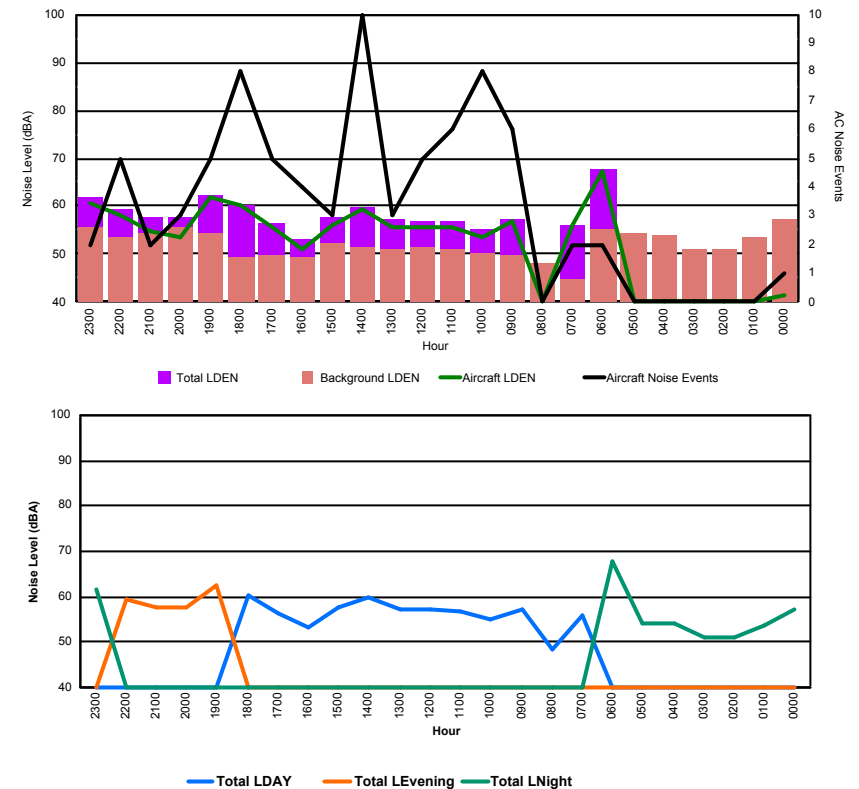


Luxembourg Airport Noise Distribution by Hour

Between 16/09/2017 00:00:00 and 16/09/2017 23:59:59 (Local Time)

Day	Aircraft Events	Total LDEN dB (A)	Aircraft LDEN dB(A)	Background LDEN dB(A)	Total LDay dB(A)	Total LEvening dB(A)	Total LNight dB (A)
16/09/17 0:00	1	57.3	41.3	57.3	-	-	57.3
16/09/17 1:00	-	53.5	-	53.6	-	-	53.5
16/09/17 2:00	-	51.0	-	51.1	-	-	51.0
16/09/17 3:00	-	50.9	-	50.9	-	-	50.9
16/09/17 4:00	-	54.1	-	54.1	-	-	54.1
16/09/17 5:00	-	54.3	-	54.3	-	-	54.3
16/09/17 6:00	2	67.6	67.3	55.1	-	-	67.6
16/09/17 7:00	2	56.1	56.2	44.9	56.1	-	-
16/09/17 8:00	-	48.3	-	48.3	48.3	-	-
16/09/17 9:00	6	57.4	56.7	49.6	57.4	-	-
16/09/17 10:00	8	55.0	53.4	50.2	55.0	-	-
16/09/17 11:00	6	56.9	55.7	50.9	56.9	-	-
16/09/17 12:00	5	57.0	55.7	51.3	57.0	-	-
16/09/17 13:00	3	57.1	55.8	51.2	57.1	-	-
16/09/17 14:00	10	59.8	59.2	51.3	59.8	-	-
16/09/17 15:00	3	57.5	56.1	52.1	57.5	-	-
16/09/17 16:00	4	53.3	51.1	49.5	53.3	-	-
16/09/17 17:00	5	56.4	55.5	49.6	56.4	-	-
16/09/17 18:00	8	60.4	60.1	49.3	60.4	-	-
16/09/17 19:00	5	62.5	61.8	54.4	-	62.5	-
16/09/17 20:00	3	57.7	53.4	55.8	-	57.7	-
16/09/17 21:00	2	57.6	54.7	54.5	-	57.6	-
16/09/17 22:00	5	59.3	58.0	53.7	-	59.3	-
16/09/17 23:00	2	61.8	60.7	55.6	-	-	61.8
	80	58.9	59.0	52.9	57.1	59.8	60.4

Location: Roodt/Syr NMT # 1



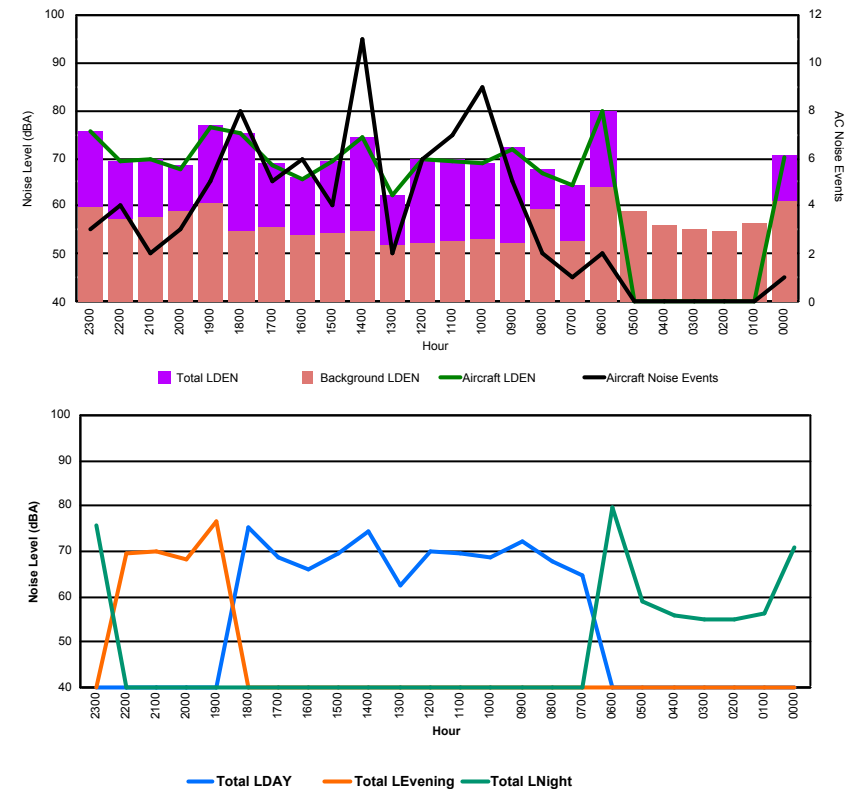


Luxembourg Airport Noise Distribution by Hour

Between 16/09/2017 00:00:00 and 16/09/2017 23:59:59 (Local Time)

Day	Aircraft Events	Total LDEN dB (A)	Aircraft LDEN dB(A)	Background LDEN dB(A)	Total LDay dB(A)	Total LEvening dB(A)	Total LNight dB (A)
16/09/17 0:00	1	70.7	70.2	61.0	-	-	70.7
16/09/17 1:00	-	56.4	-	56.4	-	-	56.4
16/09/17 2:00	-	54.8	-	54.8	-	-	54.8
16/09/17 3:00	-	55.2	-	55.2	-	-	55.2
16/09/17 4:00	-	56.1	-	56.1	-	-	56.1
16/09/17 5:00	-	59.1	-	59.1	-	-	59.1
16/09/17 6:00	2	79.8	79.7	63.9	-	-	79.8
16/09/17 7:00	1	64.5	64.2	52.5	64.5	-	-
16/09/17 8:00	2	67.6	66.9	59.2	67.6	-	-
16/09/17 9:00	5	72.1	72.0	52.1	72.1	-	-
16/09/17 10:00	9	68.9	68.8	53.2	68.9	-	-
16/09/17 11:00	7	69.6	69.5	52.5	69.6	-	-
16/09/17 12:00	6	69.9	69.8	52.1	69.9	-	-
16/09/17 13:00	2	62.4	62.1	51.9	62.4	-	-
16/09/17 14:00	11	74.3	74.2	54.9	74.3	-	-
16/09/17 15:00	4	69.4	69.3	54.3	69.4	-	-
16/09/17 16:00	6	65.9	65.7	53.8	65.9	-	-
16/09/17 17:00	5	68.9	68.7	55.8	68.9	-	-
16/09/17 18:00	8	75.3	75.3	54.6	75.3	-	-
16/09/17 19:00	5	76.7	76.6	60.5	-	76.7	-
16/09/17 20:00	3	68.4	67.8	58.9	-	68.4	-
16/09/17 21:00	2	69.8	69.6	57.7	-	69.8	-
16/09/17 22:00	4	69.5	69.2	57.4	-	69.5	-
16/09/17 23:00	3	75.8	75.7	59.6	-	-	75.8
	86	71.7	72.5	57.4	70.5	72.6	72.7

Location: DVOR NMT # 2

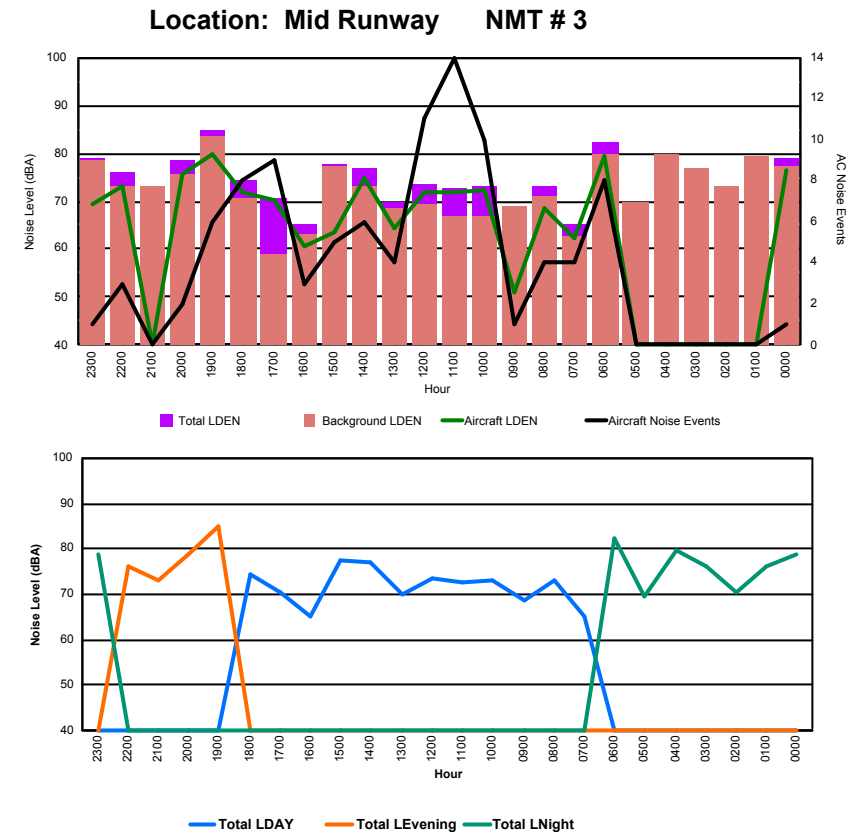




Luxembourg Airport Noise Distribution by Hour

Between 16/09/2017 00:00:00 and 16/09/2017 23:59:59 (Local Time)

Day	Aircraft Events	Total LDEN dB (A)	Aircraft LDEN dB(A)	Background LDEN dB(A)	Total LDay dB(A)	Total LEvening dB(A)	Total LNight dB (A)
16/09/17 0:00	1	78.8	76.5	77.4	-	-	78.8
16/09/17 1:00	-	76.3	-	79.2	-	-	76.3
16/09/17 2:00	-	70.6	-	73.2	-	-	70.6
16/09/17 3:00	-	76.3	-	76.9	-	-	76.3
16/09/17 4:00	-	79.7	-	80.0	-	-	79.7
16/09/17 5:00	-	69.5	-	69.6	-	-	69.5
16/09/17 6:00	8	82.5	79.2	79.8	-	-	82.5
16/09/17 7:00	4	65.1	62.2	62.7	65.1	-	-
16/09/17 8:00	4	73.0	68.5	71.2	73.0	-	-
16/09/17 9:00	1	68.8	51.2	68.9	68.8	-	-
16/09/17 10:00	10	73.2	72.2	66.8	73.2	-	-
16/09/17 11:00	14	72.8	71.7	66.9	72.8	-	-
16/09/17 12:00	11	73.7	71.9	69.2	73.7	-	-
16/09/17 13:00	4	69.8	64.3	68.4	69.8	-	-
16/09/17 14:00	6	77.0	74.7	73.0	77.0	-	-
16/09/17 15:00	5	77.7	63.5	77.5	77.7	-	-
16/09/17 16:00	3	65.1	60.6	63.2	65.1	-	-
16/09/17 17:00	9	70.5	70.2	58.9	70.5	-	-
16/09/17 18:00	8	74.2	71.8	70.6	74.2	-	-
16/09/17 19:00	6	85.0	79.7	83.6	-	85.0	-
16/09/17 20:00	2	78.7	75.8	75.5	-	78.7	-
16/09/17 21:00	-	73.2	-	73.2	-	73.2	-
16/09/17 22:00	3	76.2	73.2	73.3	-	76.2	-
16/09/17 23:00	1	79.0	69.4	78.5	-	-	79.0
	100	77.1	73.5	75.9	73.2	80.5	78.2





Luxembourg Airport Noise Distribution by Hour

Between 16/09/2017 00:00:00 and 16/09/2017 23:59:59 (Local Time)

Day	Aircraft Events	Total LDEN dB (A)	Aircraft LDEN dB(A)	Background LDEN dB(A)	Total LDay dB(A)	Total LEvening dB(A)	Total LNight dB (A)
16/09/17 0:00	1	75.9	75.1	69.7	-	-	75.9
16/09/17 1:00	-	67.3	-	68.8	-	-	67.3
16/09/17 2:00	-	65.8	-	66.8	-	-	65.8
16/09/17 3:00	-	66.7	-	67.4	-	-	66.7
16/09/17 4:00	-	66.2	-	66.7	-	-	66.2
16/09/17 5:00	-	67.3	-	68.1	-	-	67.3
16/09/17 6:00	13	75.6	75.0	68.6	-	-	75.6
16/09/17 7:00	4	59.1	53.5	59.2	59.1	-	-
16/09/17 8:00	4	69.6	69.2	60.1	69.6	-	-
16/09/17 9:00	1	60.9	54.5	59.8	60.9	-	-
16/09/17 10:00	10	69.1	68.6	60.4	69.1	-	-
16/09/17 11:00	10	67.4	66.6	60.2	67.4	-	-
16/09/17 12:00	7	67.1	66.2	59.8	67.1	-	-
16/09/17 13:00	5	65.1	63.5	60.1	65.1	-	-
16/09/17 14:00	3	71.1	70.7	60.2	71.1	-	-
16/09/17 15:00	5	62.0	57.3	60.3	62.0	-	-
16/09/17 16:00	6	62.5	58.2	60.6	62.5	-	-
16/09/17 17:00	6	68.3	67.3	61.6	68.3	-	-
16/09/17 18:00	7	70.6	70.2	60.8	70.6	-	-
16/09/17 19:00	4	74.6	74.0	65.8	-	74.6	-
16/09/17 20:00	4	76.4	76.1	64.5	-	76.4	-
16/09/17 21:00	1	64.8	58.2	63.8	-	64.8	-
16/09/17 22:00	3	72.2	71.6	63.6	-	72.2	-
16/09/17 23:00	1	67.4	57.4	66.9	-	-	67.4
	95	70.4	70.3	64.9	67.5	73.6	71.1

Location: NDB-Hamm NMT # 4

