

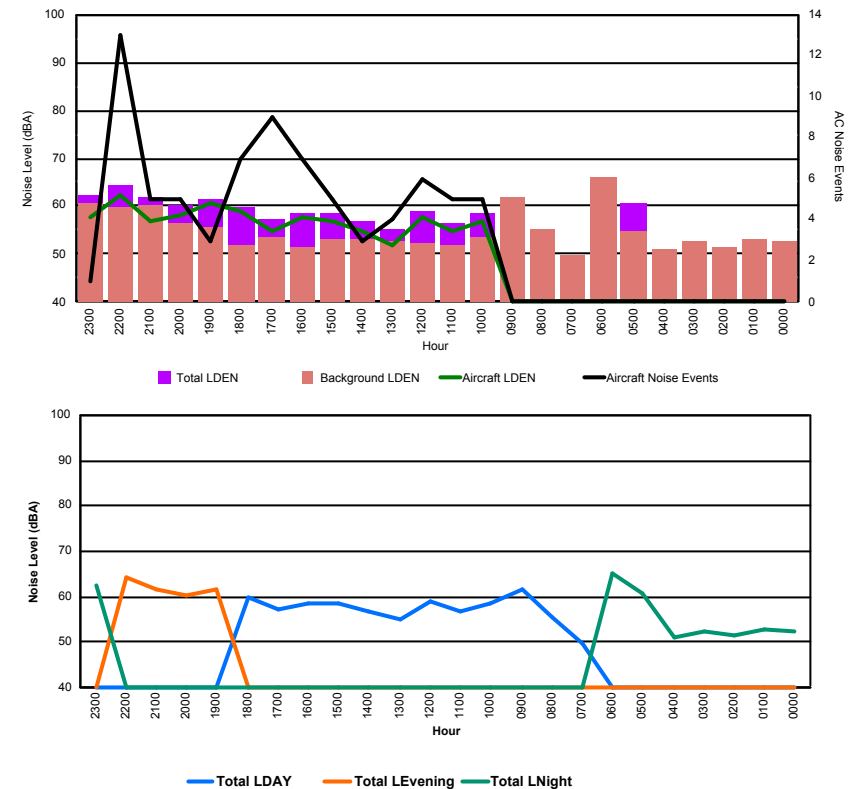


Luxembourg Airport Noise Distribution by Hour

Between 08/09/2017 00:00:00 and 08/09/2017 23:59:59 (Local Time)

Day	Aircraft Events	Total LDEN dB (A)	Aircraft LDEN dB(A)	Background LDEN dB(A)	Total LDay dB(A)	Total LEvening dB(A)	Total LNight dB (A)
08/09/17 0:00	-	52.5	-	52.5	-	-	52.5
08/09/17 1:00	-	53.0	-	53.0	-	-	53.0
08/09/17 2:00	-	51.5	-	51.5	-	-	51.5
08/09/17 3:00	-	52.5	-	52.5	-	-	52.5
08/09/17 4:00	-	51.2	-	51.2	-	-	51.2
08/09/17 5:00	-	60.7	-	54.9	-	-	60.7
08/09/17 6:00	-	65.0	-	66.1	-	-	65.0
08/09/17 7:00	-	49.7	-	49.8	49.7	-	-
08/09/17 8:00	-	55.4	-	55.3	55.4	-	-
08/09/17 9:00	-	61.7	-	61.7	61.7	-	-
08/09/17 10:00	5	58.6	57.0	53.5	58.6	-	-
08/09/17 11:00	5	56.6	54.8	51.9	56.6	-	-
08/09/17 12:00	6	58.8	57.7	52.4	58.8	-	-
08/09/17 13:00	4	55.2	51.7	52.8	55.2	-	-
08/09/17 14:00	3	56.9	54.6	53.1	56.9	-	-
08/09/17 15:00	5	58.4	56.8	53.2	58.4	-	-
08/09/17 16:00	7	58.7	57.8	51.5	58.7	-	-
08/09/17 17:00	9	57.1	54.6	53.6	57.1	-	-
08/09/17 18:00	7	59.7	59.0	51.8	59.7	-	-
08/09/17 19:00	3	61.6	60.5	55.6	-	61.6	-
08/09/17 20:00	5	60.4	58.3	56.3	-	60.4	-
08/09/17 21:00	5	61.8	56.9	60.2	-	61.8	-
08/09/17 22:00	13	64.2	62.5	59.8	-	64.2	-
08/09/17 23:00	1	62.5	57.9	60.7	-	-	62.5
	78	59.5	57.9	57.3	58.0	62.2	59.4

Location: Roodt/Syr NMT # 1



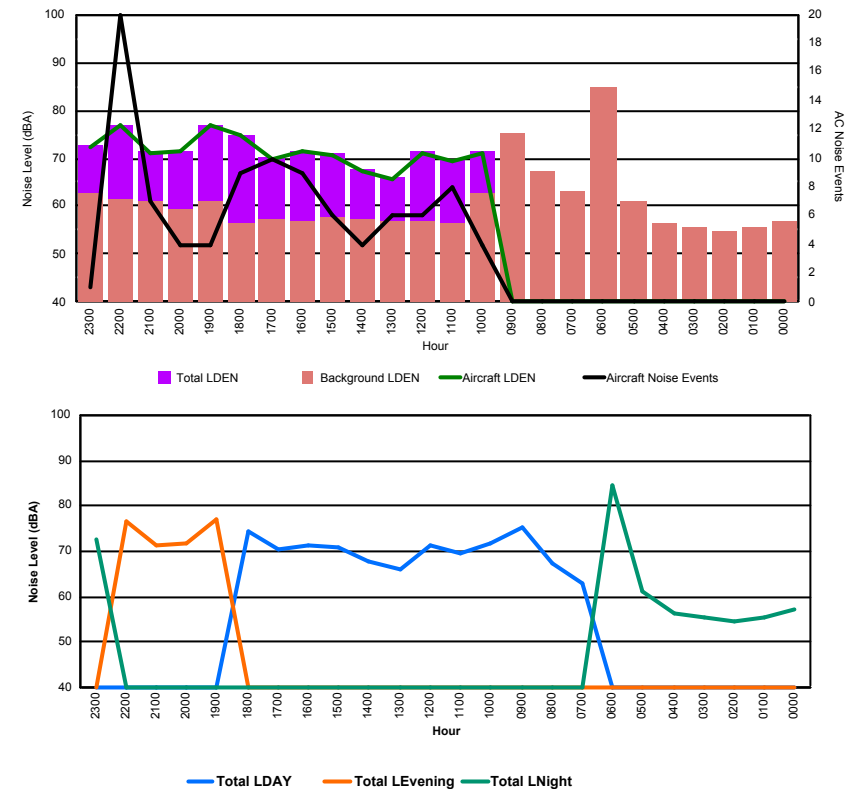


Luxembourg Airport Noise Distribution by Hour

Between 08/09/2017 00:00:00 and 08/09/2017 23:59:59 (Local Time)

Day	Aircraft Events	Total LDEN dB (A)	Aircraft LDEN dB(A)	Background LDEN dB(A)	Total LDay dB(A)	Total LEvening dB(A)	Total LNight dB (A)
08/09/17 0:00	-	57.0	-	57.0	-	-	57.0
08/09/17 1:00	-	55.5	-	55.5	-	-	55.5
08/09/17 2:00	-	54.6	-	54.6	-	-	54.6
08/09/17 3:00	-	55.6	-	55.6	-	-	55.6
08/09/17 4:00	-	56.5	-	56.5	-	-	56.5
08/09/17 5:00	-	61.0	-	61.0	-	-	61.0
08/09/17 6:00	-	84.7	-	84.7	-	-	84.7
08/09/17 7:00	-	63.0	-	63.1	63.0	-	-
08/09/17 8:00	-	67.3	-	67.3	67.3	-	-
08/09/17 9:00	-	75.2	-	75.2	75.2	-	-
08/09/17 10:00	4	71.6	70.9	62.8	71.6	-	-
08/09/17 11:00	8	69.6	69.3	56.6	69.6	-	-
08/09/17 12:00	6	71.4	71.2	56.7	71.4	-	-
08/09/17 13:00	6	66.2	65.6	57.0	66.2	-	-
08/09/17 14:00	4	67.6	67.2	57.4	67.6	-	-
08/09/17 15:00	6	71.0	70.7	57.9	71.0	-	-
08/09/17 16:00	9	71.5	71.4	56.9	71.5	-	-
08/09/17 17:00	10	70.3	70.0	57.2	70.3	-	-
08/09/17 18:00	9	74.6	74.6	56.4	74.6	-	-
08/09/17 19:00	4	76.9	76.8	61.1	-	76.9	-
08/09/17 20:00	4	71.6	71.3	59.5	-	71.6	-
08/09/17 21:00	7	71.5	71.1	61.0	-	71.5	-
08/09/17 22:00	20	76.8	76.7	61.6	-	76.8	-
08/09/17 23:00	1	72.6	72.1	62.7	-	-	72.6
	98	74.0	72.4	71.7	71.1	75.0	76.0

Location: DVOR NMT # 2

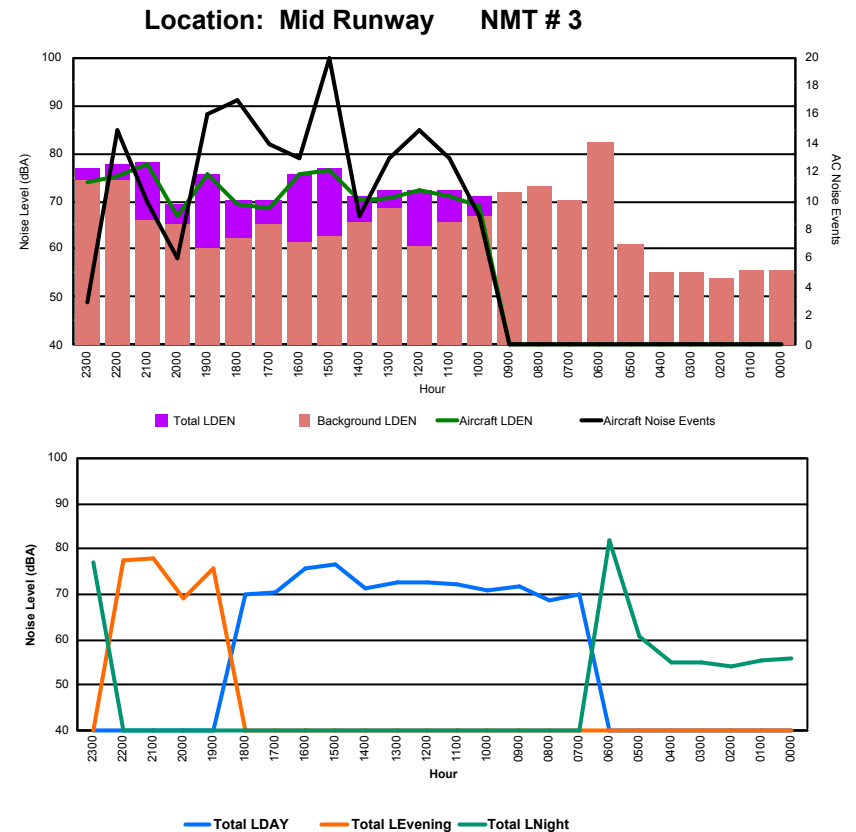




Luxembourg Airport Noise Distribution by Hour

Between 08/09/2017 00:00:00 and 08/09/2017 23:59:59 (Local Time)

Day	Aircraft Events	Total LDEN dB (A)	Aircraft LDEN dB(A)	Background LDEN dB(A)	Total LDay dB(A)	Total LEvening dB(A)	Total LNight dB (A)
08/09/17 0:00	-	55.7	-	55.7	-	-	55.7
08/09/17 1:00	-	55.6	-	55.7	-	-	55.6
08/09/17 2:00	-	53.9	-	53.9	-	-	53.9
08/09/17 3:00	-	55.1	-	55.1	-	-	55.1
08/09/17 4:00	-	55.0	-	55.0	-	-	55.0
08/09/17 5:00	-	60.9	-	60.9	-	-	60.9
08/09/17 6:00	-	82.1	-	82.1	-	-	82.1
08/09/17 7:00	-	70.2	-	70.2	70.2	-	-
08/09/17 8:00	-	68.7	-	73.2	68.7	-	-
08/09/17 9:00	-	71.8	-	72.0	71.8	-	-
08/09/17 10:00	9	71.0	69.1	66.9	71.0	-	-
08/09/17 11:00	13	72.1	71.1	65.6	72.1	-	-
08/09/17 12:00	15	72.5	72.2	60.7	72.5	-	-
08/09/17 13:00	13	72.5	70.6	68.7	72.5	-	-
08/09/17 14:00	9	71.2	70.2	65.5	71.2	-	-
08/09/17 15:00	20	76.7	76.6	62.7	76.7	-	-
08/09/17 16:00	13	75.8	75.6	61.3	75.8	-	-
08/09/17 17:00	14	70.3	68.7	65.4	70.3	-	-
08/09/17 18:00	17	70.2	69.4	62.1	70.2	-	-
08/09/17 19:00	16	75.6	75.5	60.0	-	75.6	-
08/09/17 20:00	6	69.2	67.0	65.2	-	69.2	-
08/09/17 21:00	10	78.1	77.9	65.9	-	78.1	-
08/09/17 22:00	15	77.7	75.2	74.2	-	77.7	-
08/09/17 23:00	3	77.0	73.8	74.3	-	-	77.0
	173	74.0	73.5	71.0	72.6	76.2	74.3





Luxembourg Airport Noise Distribution by Hour

Between 08/09/2017 00:00:00 and 08/09/2017 23:59:59 (Local Time)

Day	Aircraft Events	Total LDEN dB (A)	Aircraft LDEN dB(A)	Background LDEN dB(A)	Total LDay dB(A)	Total LEvening dB(A)	Total LNight dB (A)
08/09/17 0:00	-	64.4	-	65.3	-	-	64.4
08/09/17 1:00	-	62.2	-	62.6	-	-	62.2
08/09/17 2:00	-	60.9	-	61.2	-	-	60.9
08/09/17 3:00	-	62.5	-	62.6	-	-	62.5
08/09/17 4:00	-	64.5	-	64.7	-	-	64.5
08/09/17 5:00	-	68.0	-	69.2	-	-	68.0
08/09/17 6:00	-	77.2	-	77.8	-	-	77.2
08/09/17 7:00	-	63.7	-	66.9	63.7	-	-
08/09/17 8:00	-	62.3	-	64.9	62.3	-	-
08/09/17 9:00	-	68.3	-	68.4	68.3	-	-
08/09/17 10:00	6	63.3	59.3	61.4	63.3	-	-
08/09/17 11:00	9	68.1	67.2	61.2	68.1	-	-
08/09/17 12:00	8	69.1	68.3	61.8	69.1	-	-
08/09/17 13:00	7	66.5	64.3	63.0	66.5	-	-
08/09/17 14:00	7	69.0	67.8	63.4	69.0	-	-
08/09/17 15:00	14	66.7	65.1	62.2	66.7	-	-
08/09/17 16:00	6	63.4	58.0	62.1	63.4	-	-
08/09/17 17:00	9	66.4	64.6	62.0	66.4	-	-
08/09/17 18:00	10	64.1	61.7	60.9	64.1	-	-
08/09/17 19:00	10	70.4	68.9	65.5	-	70.4	-
08/09/17 20:00	2	65.9	59.8	64.8	-	65.9	-
08/09/17 21:00	6	73.1	72.5	64.6	-	73.1	-
08/09/17 22:00	2	71.5	70.7	64.3	-	71.5	-
08/09/17 23:00	3	72.1	70.3	67.7	-	-	72.1
	99	68.9	67.5	67.2	66.5	70.9	70.3

Location: NDB-Hamm NMT # 4

