

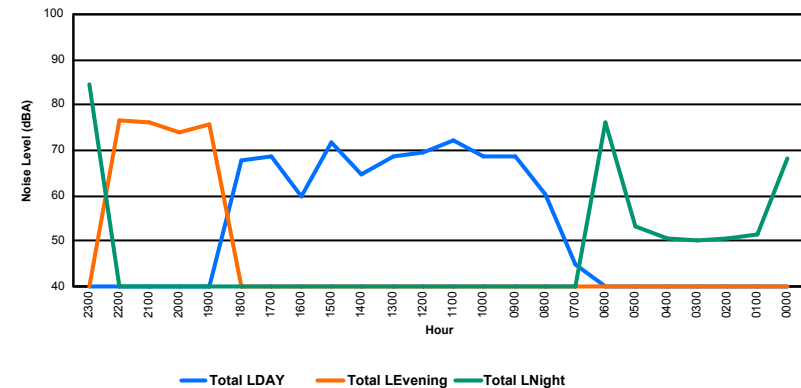
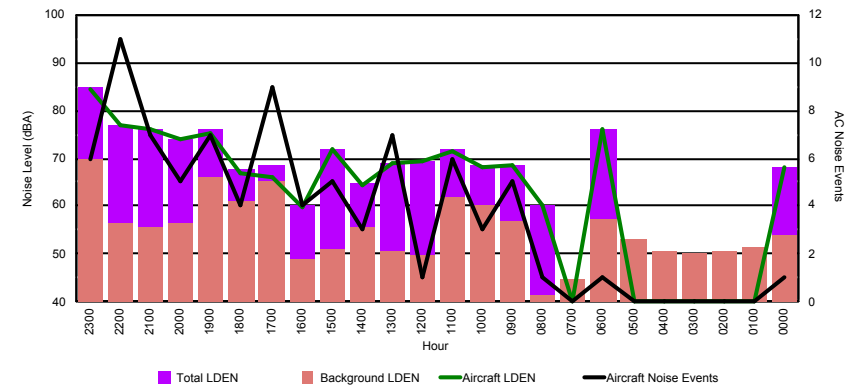


## Luxembourg Airport Noise Distribution by Hour

Between 06/08/2017 00:00:00 and 06/08/2017 23:59:59 (Local Time)

Day	Aircraft Events	Total LDEN dB (A)	Aircraft LDEN dB(A)	Background LDEN dB(A)	Total LDay dB(A)	Total LEvening dB(A)	Total LNight dB (A)
06/08/17 0:00	1	68.3	68.1	53.8	-	-	68.3
06/08/17 1:00	-	51.3	-	51.3	-	-	51.3
06/08/17 2:00	-	50.7	-	50.7	-	-	50.7
06/08/17 3:00	-	50.0	-	50.0	-	-	50.0
06/08/17 4:00	-	50.7	-	50.7	-	-	50.7
06/08/17 5:00	-	53.2	-	53.2	-	-	53.2
06/08/17 6:00	1	76.1	76.0	57.3	-	-	76.1
06/08/17 7:00	-	44.9	-	44.9	44.9	-	-
06/08/17 8:00	1	60.3	60.2	41.4	60.3	-	-
06/08/17 9:00	5	68.7	68.4	57.0	68.7	-	-
06/08/17 10:00	3	68.6	68.0	60.0	68.6	-	-
06/08/17 11:00	6	72.0	71.6	61.7	72.0	-	-
06/08/17 12:00	1	69.5	69.5	49.9	69.5	-	-
06/08/17 13:00	7	68.9	68.8	50.5	68.9	-	-
06/08/17 14:00	3	64.9	64.4	55.7	64.9	-	-
06/08/17 15:00	5	71.8	71.8	51.0	71.8	-	-
06/08/17 16:00	4	60.0	59.7	48.8	60.0	-	-
06/08/17 17:00	9	68.6	66.0	65.1	68.6	-	-
06/08/17 18:00	4	67.8	66.8	61.0	67.8	-	-
06/08/17 19:00	7	75.9	75.4	66.0	-	75.9	-
06/08/17 20:00	5	74.0	73.9	56.3	-	74.0	-
06/08/17 21:00	7	76.0	75.9	55.6	-	76.0	-
06/08/17 22:00	11	76.7	76.7	56.3	-	76.7	-
06/08/17 23:00	6	84.6	84.5	69.9	-	-	84.6
	<b>86</b>	<b>73.7</b>	<b>74.8</b>	<b>60.1</b>	<b>68.3</b>	<b>75.8</b>	<b>76.2</b>

Location: DVOR NMT # 2



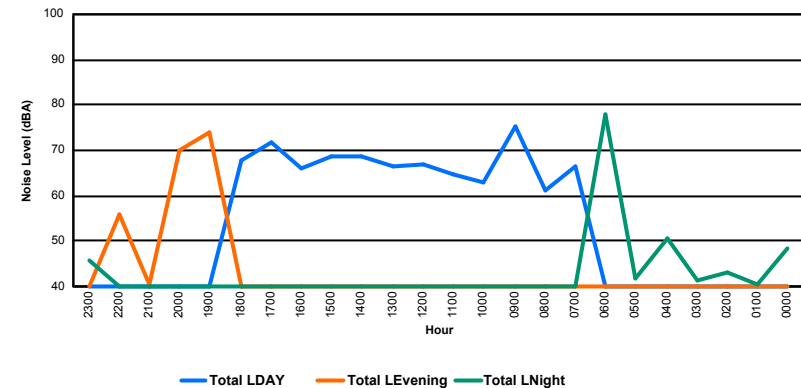
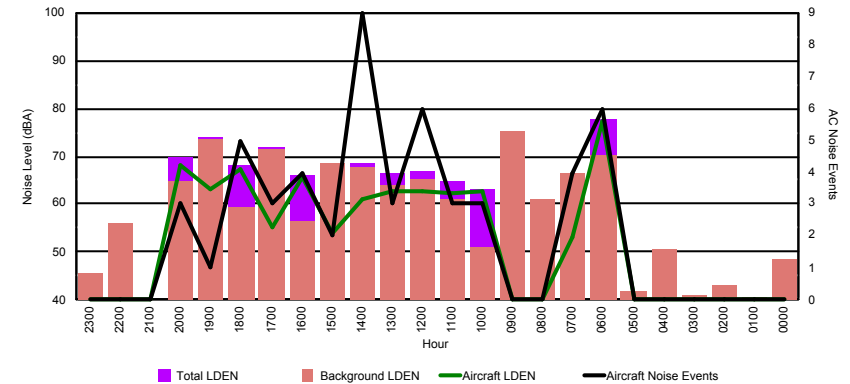


## Luxembourg Airport Noise Distribution by Hour

Between 06/08/2017 00:00:00 and 06/08/2017 23:59:59 (Local Time)

Day	Aircraft Events	Total LDEN dB (A)	Aircraft LDEN dB(A)	Background LDEN dB(A)	Total LDay dB(A)	Total LEvening dB(A)	Total LNight dB (A)
06/08/17 0:00	-	48.6	-	48.6	-	-	48.6
06/08/17 1:00	-	40.5	-	40.5	-	-	40.5
06/08/17 2:00	-	43.3	-	43.3	-	-	43.3
06/08/17 3:00	-	41.2	-	41.2	-	-	41.2
06/08/17 4:00	-	50.7	-	50.7	-	-	50.7
06/08/17 5:00	-	41.7	-	41.7	-	-	41.7
06/08/17 6:00	6	77.8	77.1	70.2	-	-	77.8
06/08/17 7:00	4	66.5	53.3	66.3	66.5	-	-
06/08/17 8:00	-	61.0	-	61.0	61.0	-	-
06/08/17 9:00	-	75.3	-	75.2	75.3	-	-
06/08/17 10:00	3	63.1	62.8	50.9	63.1	-	-
06/08/17 11:00	3	64.6	62.1	61.1	64.6	-	-
06/08/17 12:00	6	67.0	62.8	65.0	67.0	-	-
06/08/17 13:00	3	66.4	62.7	64.1	66.4	-	-
06/08/17 14:00	9	68.6	61.0	67.8	68.6	-	-
06/08/17 15:00	2	68.7	54.1	68.5	68.7	-	-
06/08/17 16:00	4	66.0	65.5	56.6	66.0	-	-
06/08/17 17:00	3	71.7	55.0	71.6	71.7	-	-
06/08/17 18:00	5	68.0	67.4	59.4	68.0	-	-
06/08/17 19:00	1	73.9	63.3	73.5	-	73.9	-
06/08/17 20:00	3	69.9	68.3	64.6	-	69.9	-
06/08/17 21:00	-	40.3	-	40.3	-	40.3	-
06/08/17 22:00	-	56.1	-	56.1	-	56.1	-
06/08/17 23:00	-	45.6	-	45.6	-	-	45.6
	<b>52</b>	<b>69.0</b>	<b>67.8</b>	<b>66.7</b>	<b>68.9</b>	<b>69.4</b>	<b>68.8</b>

Location: Mid Runway NMT # 3



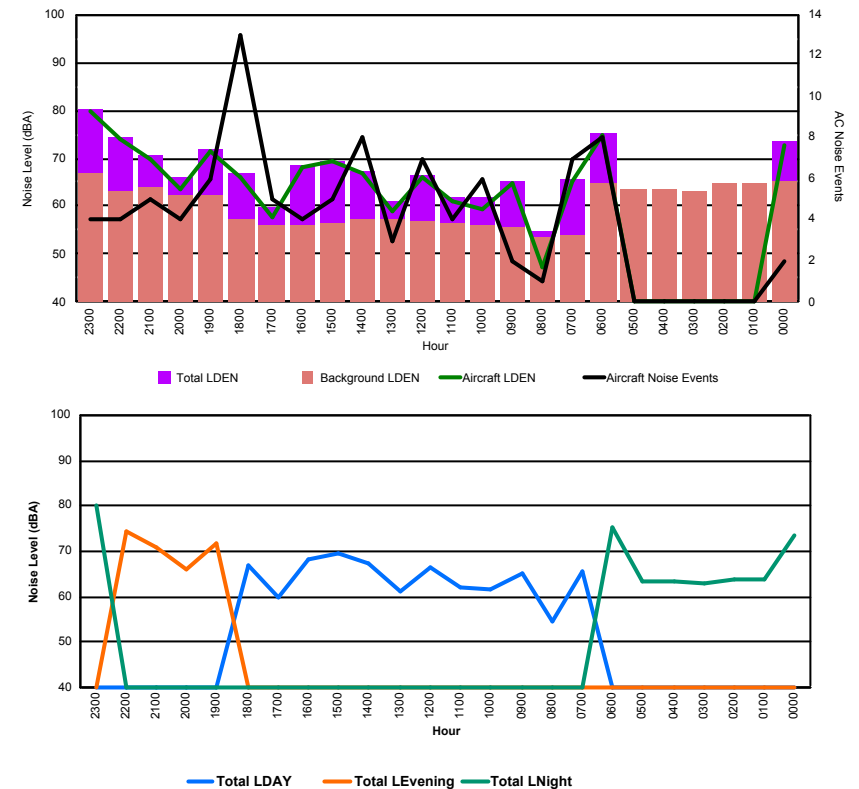


## Luxembourg Airport Noise Distribution by Hour

Between 06/08/2017 00:00:00 and 06/08/2017 23:59:59 (Local Time)

Day	Aircraft Events	Total LDEN dB (A)	Aircraft LDEN dB(A)	Background LDEN dB(A)	Total LDay dB(A)	Total LEvening dB(A)	Total LNight dB (A)
06/08/17 0:00	2	73.4	72.9	65.2	-	-	73.4
06/08/17 1:00	-	63.7	-	64.6	-	-	63.7
06/08/17 2:00	-	63.9	-	64.8	-	-	63.9
06/08/17 3:00	-	63.1	-	63.2	-	-	63.1
06/08/17 4:00	-	63.4	-	63.4	-	-	63.4
06/08/17 5:00	-	63.6	-	63.7	-	-	63.6
06/08/17 6:00	8	75.3	75.0	64.6	-	-	75.3
06/08/17 7:00	7	65.6	65.3	54.1	65.6	-	-
06/08/17 8:00	1	54.6	47.4	53.7	54.6	-	-
06/08/17 9:00	2	65.2	64.7	55.8	65.2	-	-
06/08/17 10:00	6	61.7	59.4	56.2	61.7	-	-
06/08/17 11:00	4	61.9	61.2	56.6	61.9	-	-
06/08/17 12:00	7	66.5	66.0	57.0	66.5	-	-
06/08/17 13:00	3	61.2	58.9	57.4	61.2	-	-
06/08/17 14:00	8	67.3	66.9	57.1	67.3	-	-
06/08/17 15:00	5	69.4	69.3	56.4	69.4	-	-
06/08/17 16:00	4	68.4	68.2	56.1	68.4	-	-
06/08/17 17:00	5	59.8	57.5	56.1	59.8	-	-
06/08/17 18:00	13	66.7	66.2	57.4	66.7	-	-
06/08/17 19:00	6	71.9	71.5	62.2	-	71.9	-
06/08/17 20:00	4	66.1	63.7	62.3	-	66.1	-
06/08/17 21:00	5	70.8	69.9	63.8	-	70.8	-
06/08/17 22:00	4	74.2	73.8	63.0	-	74.2	-
06/08/17 23:00	4	80.1	79.9	66.8	-	-	80.1
	<b>98</b>	<b>70.5</b>	<b>71.0</b>	<b>61.8</b>	<b>65.5</b>	<b>71.6</b>	<b>73.3</b>

Location: NDB-Hamm NMT # 4





## Luxembourg Airport Noise Distribution by Hour

Between 06/08/2017 00:00:00 and 06/08/2017 23:59:59 (Local Time)

Day	Aircraft Events	Total LDEN dB (A)	Aircraft LDEN dB(A)	Background LDEN dB(A)	Total LDay dB(A)	Total LEvening dB(A)	Total LNight dB (A)
06/08/17 0:00	1	66.5	61.6	66.0	-	-	66.5
06/08/17 1:00	-	64.5	-	65.5	-	-	64.5
06/08/17 2:00	-	63.1	-	63.7	-	-	63.1
06/08/17 3:00	-	62.7	-	62.7	-	-	62.7
06/08/17 4:00	-	62.1	-	62.1	-	-	62.1
06/08/17 5:00	-	64.7	-	64.7	-	-	64.7
06/08/17 6:00	7	70.7	67.6	68.4	-	-	70.7
06/08/17 7:00	7	58.8	56.0	56.1	58.8	-	-
06/08/17 8:00	1	54.5	38.2	54.5	54.5	-	-
06/08/17 9:00	1	58.8	55.8	55.7	58.8	-	-
06/08/17 10:00	3	58.2	52.5	56.9	58.2	-	-
06/08/17 11:00	3	59.0	54.2	57.3	59.0	-	-
06/08/17 12:00	2	60.5	57.4	57.6	60.5	-	-
06/08/17 13:00	4	58.8	52.7	57.7	58.8	-	-
06/08/17 14:00	3	61.6	56.0	60.3	61.6	-	-
06/08/17 15:00	4	60.9	57.8	58.0	60.9	-	-
06/08/17 16:00	2	61.1	58.1	58.1	61.1	-	-
06/08/17 17:00	1	59.5	49.2	59.2	59.5	-	-
06/08/17 18:00	8	62.3	58.3	60.3	62.3	-	-
06/08/17 19:00	5	65.5	63.1	62.0	-	65.5	-
06/08/17 20:00	2	62.8	55.7	62.0	-	62.8	-
06/08/17 21:00	5	64.2	60.2	62.2	-	64.2	-
06/08/17 22:00	4	67.0	64.7	63.4	-	67.0	-
06/08/17 23:00	4	71.7	70.7	65.4	-	-	71.7
	<b>67</b>	<b>64.5</b>	<b>61.9</b>	<b>62.3</b>	<b>59.9</b>	<b>65.2</b>	<b>67.2</b>

Location: Gare centrale NMT # 5

