

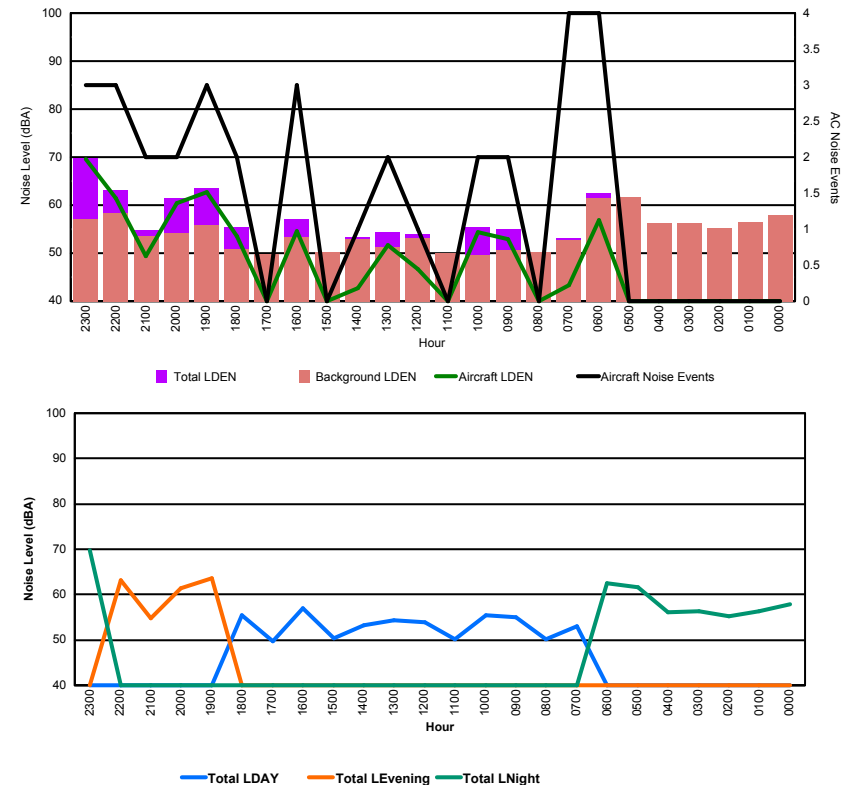


## Luxembourg Airport Noise Distribution by Hour

Between 20/04/2017 00:00:00 and 20/04/2017 23:59:59 (Local Time)

Day	Aircraft Events	Total LDEN dB (A)	Aircraft LDEN dB(A)	Background LDEN dB(A)	Total LDay dB(A)	Total LEvening dB(A)	Total LNight dB (A)
20/04/17 0:00	-	57.8	-	57.9	-	-	57.8
20/04/17 1:00	-	56.3	-	56.4	-	-	56.3
20/04/17 2:00	-	55.3	-	55.3	-	-	55.3
20/04/17 3:00	-	56.3	-	56.3	-	-	56.3
20/04/17 4:00	-	56.2	-	56.3	-	-	56.2
20/04/17 5:00	-	61.6	-	61.7	-	-	61.6
20/04/17 6:00	4	62.5	56.9	61.4	-	-	62.5
20/04/17 7:00	4	53.1	43.3	52.7	53.1	-	-
20/04/17 8:00	-	50.1	-	50.2	50.1	-	-
20/04/17 9:00	2	54.9	52.9	50.7	54.9	-	-
20/04/17 10:00	2	55.5	54.3	49.6	55.5	-	-
20/04/17 11:00	-	50.1	-	50.1	50.1	-	-
20/04/17 12:00	1	54.0	46.6	53.2	54.0	-	-
20/04/17 13:00	2	54.4	51.7	51.2	54.4	-	-
20/04/17 14:00	1	53.3	42.8	52.9	53.3	-	-
20/04/17 15:00	-	50.3	-	50.3	50.3	-	-
20/04/17 16:00	3	57.0	54.5	53.4	57.0	-	-
20/04/17 17:00	-	49.8	-	49.8	49.8	-	-
20/04/17 18:00	2	55.4	53.5	50.8	55.4	-	-
20/04/17 19:00	3	63.6	62.8	55.9	-	63.6	-
20/04/17 20:00	2	61.4	60.5	54.2	-	61.4	-
20/04/17 21:00	2	54.8	49.4	53.5	-	54.8	-
20/04/17 22:00	3	63.1	61.4	58.4	-	63.1	-
20/04/17 23:00	3	69.8	69.6	57.1	-	-	69.8
	<b>34</b>	<b>60.0</b>	<b>60.4</b>	<b>55.7</b>	<b>53.8</b>	<b>61.8</b>	<b>62.7</b>

Location: Roodt/Syr NMT # 1



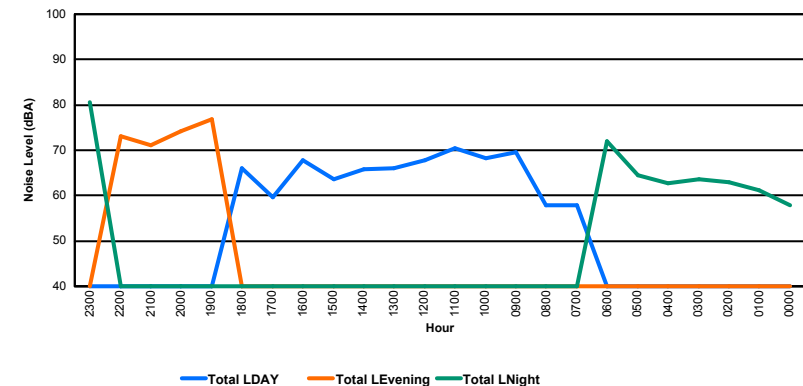
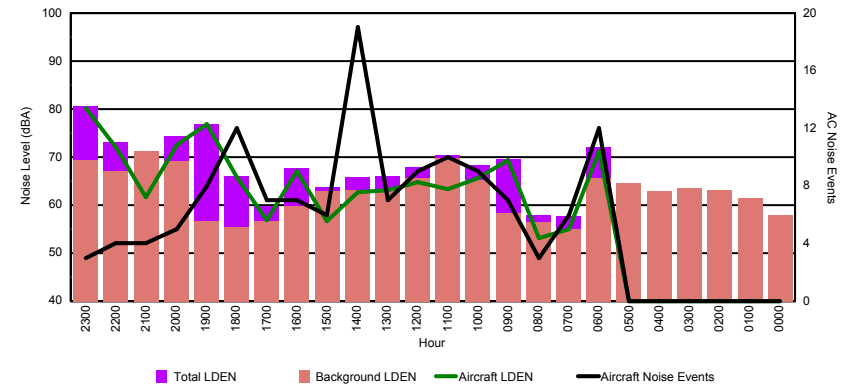


## Luxembourg Airport Noise Distribution by Hour

Between 20/04/2017 00:00:00 and 20/04/2017 23:59:59 (Local Time)

Day	Aircraft Events	Total LDEN dB (A)	Aircraft LDEN dB(A)	Background LDEN dB(A)	Total LDay dB(A)	Total LEvening dB(A)	Total LNight dB (A)
20/04/17 0:00	-	57.9	-	58.0	-	-	57.9
20/04/17 1:00	-	61.2	-	61.4	-	-	61.2
20/04/17 2:00	-	63.0	-	63.1	-	-	63.0
20/04/17 3:00	-	63.6	-	63.6	-	-	63.6
20/04/17 4:00	-	62.8	-	62.9	-	-	62.8
20/04/17 5:00	-	64.5	-	64.6	-	-	64.5
20/04/17 6:00	12	72.1	71.2	65.7	-	-	72.1
20/04/17 7:00	6	57.8	54.9	55.0	57.8	-	-
20/04/17 8:00	3	57.9	53.1	56.4	57.9	-	-
20/04/17 9:00	7	69.6	69.3	58.4	69.6	-	-
20/04/17 10:00	9	68.3	65.6	65.3	68.3	-	-
20/04/17 11:00	10	70.4	63.4	69.7	70.4	-	-
20/04/17 12:00	9	67.9	64.7	65.6	67.9	-	-
20/04/17 13:00	7	66.1	63.1	63.4	66.1	-	-
20/04/17 14:00	19	65.8	62.7	63.2	65.8	-	-
20/04/17 15:00	6	63.7	56.7	63.0	63.7	-	-
20/04/17 16:00	7	67.8	67.1	59.8	67.8	-	-
20/04/17 17:00	7	59.7	56.9	56.7	59.7	-	-
20/04/17 18:00	12	66.1	65.8	55.4	66.1	-	-
20/04/17 19:00	8	76.8	76.8	56.6	-	76.8	-
20/04/17 20:00	5	74.3	72.6	69.2	-	74.3	-
20/04/17 21:00	4	71.0	61.6	71.2	-	71.0	-
20/04/17 22:00	4	73.2	72.1	67.0	-	73.2	-
20/04/17 23:00	3	80.6	80.3	69.3	-	-	80.6
	<b>138</b>	<b>71.1</b>	<b>71.2</b>	<b>65.0</b>	<b>66.6</b>	<b>74.3</b>	<b>72.5</b>

Location: DVOR NMT # 2



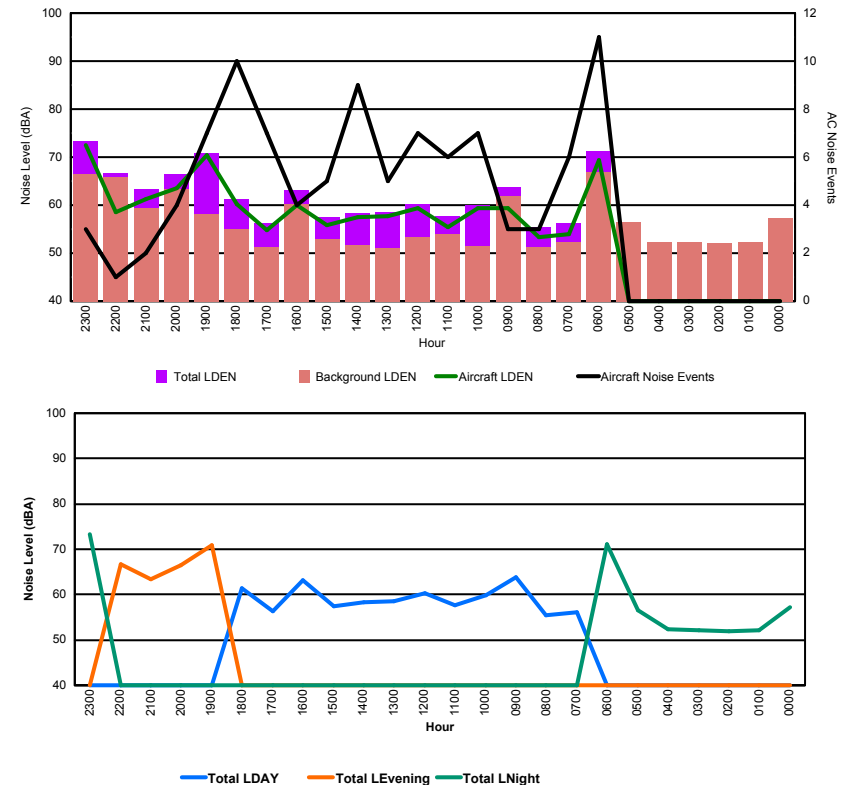


## Luxembourg Airport Noise Distribution by Hour

Between 20/04/2017 00:00:00 and 20/04/2017 23:59:59 (Local Time)

Day	Aircraft Events	Total LDEN dB (A)	Aircraft LDEN dB(A)	Background LDEN dB(A)	Total LDay dB(A)	Total LEvening dB(A)	Total LNight dB (A)
20/04/17 0:00	-	57.2	-	57.2	-	-	57.2
20/04/17 1:00	-	52.2	-	52.2	-	-	52.2
20/04/17 2:00	-	52.0	-	52.0	-	-	52.0
20/04/17 3:00	-	52.2	-	52.2	-	-	52.2
20/04/17 4:00	-	52.3	-	52.3	-	-	52.3
20/04/17 5:00	-	56.5	-	56.5	-	-	56.5
20/04/17 6:00	11	71.2	69.3	66.8	-	-	71.2
20/04/17 7:00	6	56.2	54.0	52.3	56.2	-	-
20/04/17 8:00	3	55.4	53.3	51.2	55.4	-	-
20/04/17 9:00	3	63.8	59.4	61.9	63.8	-	-
20/04/17 10:00	7	59.9	59.3	51.5	59.9	-	-
20/04/17 11:00	6	57.7	55.5	53.9	57.7	-	-
20/04/17 12:00	7	60.3	59.4	53.3	60.3	-	-
20/04/17 13:00	5	58.6	57.8	51.1	58.6	-	-
20/04/17 14:00	9	58.4	57.4	51.7	58.4	-	-
20/04/17 15:00	5	57.5	55.8	52.9	57.5	-	-
20/04/17 16:00	4	63.1	59.9	60.3	63.1	-	-
20/04/17 17:00	7	56.3	54.8	51.3	56.3	-	-
20/04/17 18:00	10	61.3	60.2	55.0	61.3	-	-
20/04/17 19:00	7	70.8	70.5	58.2	-	70.8	-
20/04/17 20:00	4	66.5	63.5	63.4	-	66.5	-
20/04/17 21:00	2	63.4	61.3	59.4	-	63.4	-
20/04/17 22:00	1	66.6	58.6	65.9	-	66.6	-
20/04/17 23:00	3	73.4	72.5	66.5	-	-	73.4
	100	64.7	64.4	59.8	59.9	67.6	66.6

Location: Mid Runway NMT # 3



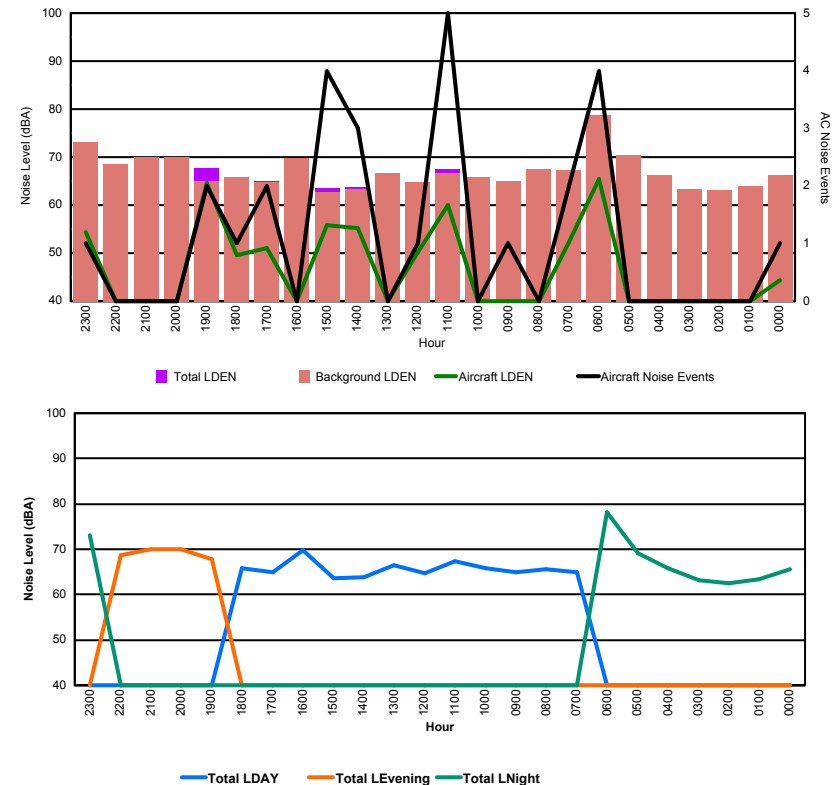


## Luxembourg Airport Noise Distribution by Hour

Between 20/04/2017 00:00:00 and 20/04/2017 23:59:59 (Local Time)

Day	Aircraft Events	Total LDEN dB (A)	Aircraft LDEN dB(A)	Background LDEN dB(A)	Total LDay dB(A)	Total LEvening dB(A)	Total LNight dB (A)
20/04/17 0:00	1	65.6	44.3	66.2	-	-	65.6
20/04/17 1:00	-	63.4	-	64.0	-	-	63.4
20/04/17 2:00	-	62.6	-	63.1	-	-	62.6
20/04/17 3:00	-	63.1	-	63.3	-	-	63.1
20/04/17 4:00	-	65.9	-	66.3	-	-	65.9
20/04/17 5:00	-	69.2	-	70.5	-	-	69.2
20/04/17 6:00	4	78.2	65.4	78.8	-	-	78.2
20/04/17 7:00	2	64.9	52.2	67.3	64.9	-	-
20/04/17 8:00	-	65.5	-	67.5	65.5	-	-
20/04/17 9:00	1	64.9	38.5	65.0	64.9	-	-
20/04/17 10:00	-	65.8	-	65.9	65.8	-	-
20/04/17 11:00	5	67.4	60.1	66.6	67.4	-	-
20/04/17 12:00	1	64.8	50.3	64.7	64.8	-	-
20/04/17 13:00	-	66.5	-	66.6	66.5	-	-
20/04/17 14:00	3	63.8	55.2	63.3	63.8	-	-
20/04/17 15:00	4	63.5	55.8	62.8	63.5	-	-
20/04/17 16:00	-	69.7	-	69.7	69.7	-	-
20/04/17 17:00	2	64.9	51.1	64.8	64.9	-	-
20/04/17 18:00	1	65.9	49.6	65.8	65.9	-	-
20/04/17 19:00	2	67.7	64.6	64.9	-	67.7	-
20/04/17 20:00	-	70.0	-	70.0	-	70.0	-
20/04/17 21:00	-	70.1	-	70.1	-	70.1	-
20/04/17 22:00	-	68.6	-	68.6	-	68.6	-
20/04/17 23:00	1	73.1	54.4	73.1	-	-	73.1
	<b>27</b>	<b>69.0</b>	<b>58.7</b>	<b>69.3</b>	<b>66.0</b>	<b>69.2</b>	<b>71.3</b>

Location: NDB-Hamm NMT # 4





## Luxembourg Airport Noise Distribution by Hour

Between 20/04/2017 00:00:00 and 20/04/2017 23:59:59 (Local Time)

Day	Aircraft Events	Total LDEN dB (A)	Aircraft LDEN dB(A)	Background LDEN dB(A)	Total LDay dB(A)	Total LEvening dB(A)	Total LNight dB (A)
20/04/17 0:00	1	64.5	53.5	65.2	-	-	64.5
20/04/17 1:00	-	61.9	-	62.2	-	-	61.9
20/04/17 2:00	-	60.1	-	60.2	-	-	60.1
20/04/17 3:00	-	59.2	-	59.2	-	-	59.2
20/04/17 4:00	-	65.1	-	65.2	-	-	65.1
20/04/17 5:00	-	68.8	-	70.1	-	-	68.8
20/04/17 6:00	4	72.4	69.4	71.5	-	-	72.4
20/04/17 7:00	1	61.9	53.3	62.9	61.9	-	-
20/04/17 8:00	1	61.9	56.1	62.3	61.9	-	-
20/04/17 9:00	8	61.8	55.3	60.9	61.8	-	-
20/04/17 10:00	6	61.7	56.9	60.0	61.7	-	-
20/04/17 11:00	9	64.0	59.4	62.4	64.0	-	-
20/04/17 12:00	5	61.2	55.5	60.0	61.2	-	-
20/04/17 13:00	11	61.9	58.6	59.4	61.9	-	-
20/04/17 14:00	6	61.1	56.0	59.5	61.1	-	-
20/04/17 15:00	6	63.3	59.2	61.3	63.3	-	-
20/04/17 16:00	11	64.1	61.6	60.9	64.1	-	-
20/04/17 17:00	9	61.6	56.9	60.1	61.6	-	-
20/04/17 18:00	9	62.6	57.3	61.3	62.6	-	-
20/04/17 19:00	3	68.4	59.4	67.9	-	68.4	-
20/04/17 20:00	6	66.3	62.4	64.2	-	66.3	-
20/04/17 21:00	9	65.9	62.3	63.8	-	65.9	-
20/04/17 22:00	9	64.5	60.6	62.4	-	64.5	-
20/04/17 23:00	4	69.6	67.3	65.9	-	-	69.6
	<b>118</b>	<b>65.3</b>	<b>61.5</b>	<b>64.4</b>	<b>62.4</b>	<b>66.5</b>	<b>67.4</b>

Location: Gare centrale NMT # 5

