

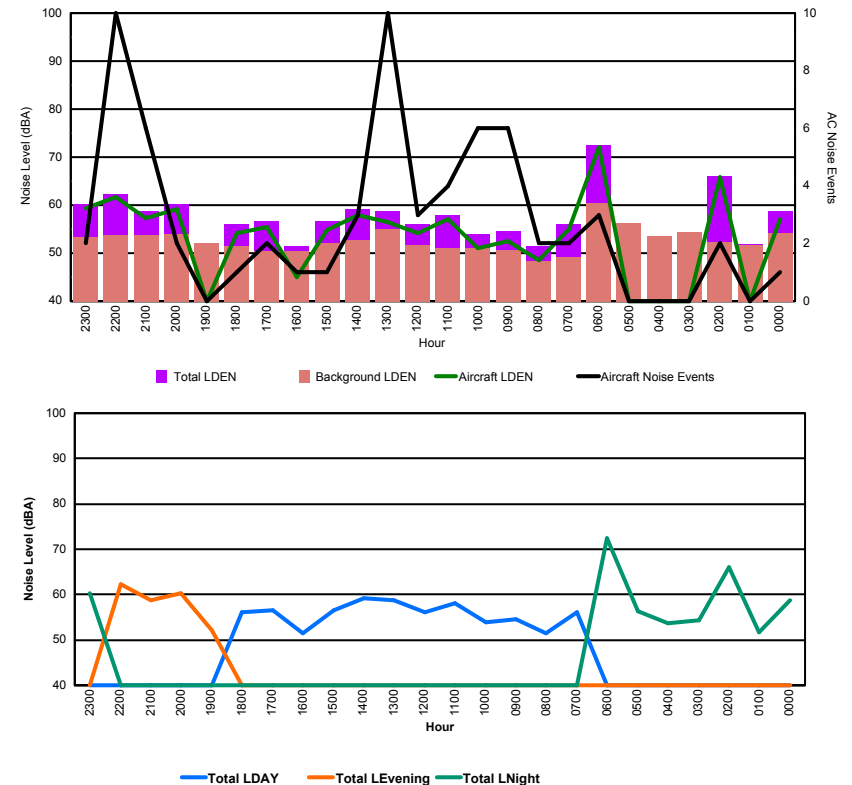


Luxembourg Airport Noise Distribution by Hour

Between 17/04/2017 00:00:00 and 17/04/2017 23:59:59 (Local Time)

Day	Aircraft Events	Total LDEN dB (A)	Aircraft LDEN dB(A)	Background LDEN dB(A)	Total LDay dB(A)	Total LEvening dB(A)	Total LNight dB (A)
17/04/17 0:00	1	58.8	57.0	54.2	-	-	58.8
17/04/17 1:00	-	51.8	-	51.7	-	-	51.8
17/04/17 2:00	2	66.1	65.9	52.3	-	-	66.1
17/04/17 3:00	-	54.3	-	54.3	-	-	54.3
17/04/17 4:00	-	53.6	-	53.6	-	-	53.6
17/04/17 5:00	-	56.3	-	56.3	-	-	56.3
17/04/17 6:00	3	72.4	72.1	60.4	-	-	72.4
17/04/17 7:00	2	56.1	55.1	49.1	56.1	-	-
17/04/17 8:00	2	51.5	48.6	48.4	51.5	-	-
17/04/17 9:00	6	54.6	52.6	50.6	54.6	-	-
17/04/17 10:00	6	54.0	51.1	51.1	54.0	-	-
17/04/17 11:00	4	58.0	57.1	51.1	58.0	-	-
17/04/17 12:00	3	56.1	54.2	51.7	56.1	-	-
17/04/17 13:00	10	58.8	56.5	55.0	58.8	-	-
17/04/17 14:00	3	59.1	58.0	52.7	59.1	-	-
17/04/17 15:00	1	56.6	54.7	52.1	56.6	-	-
17/04/17 16:00	1	51.4	44.9	50.4	51.4	-	-
17/04/17 17:00	2	56.6	55.4	50.4	56.6	-	-
17/04/17 18:00	1	56.1	54.2	51.5	56.1	-	-
17/04/17 19:00	-	52.1	-	52.1	-	52.1	-
17/04/17 20:00	2	60.3	59.2	54.0	-	60.3	-
17/04/17 21:00	6	58.8	57.3	53.8	-	58.8	-
17/04/17 22:00	10	62.2	61.6	53.8	-	62.2	-
17/04/17 23:00	2	60.2	59.3	53.4	-	-	60.2
	67	61.4	61.6	53.5	56.3	59.6	64.8

Location: Roodt/Syr NMT # 1



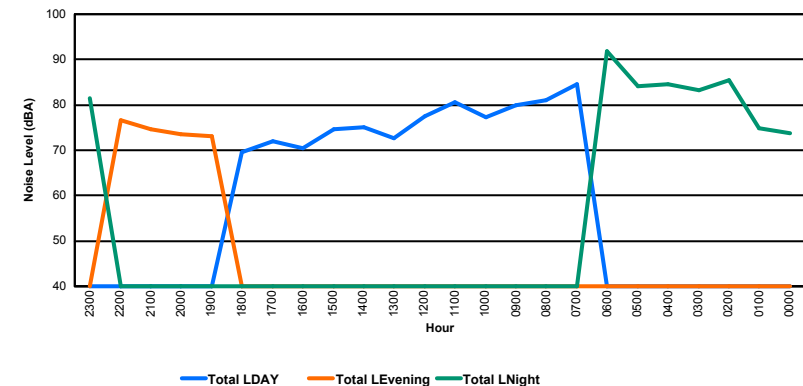
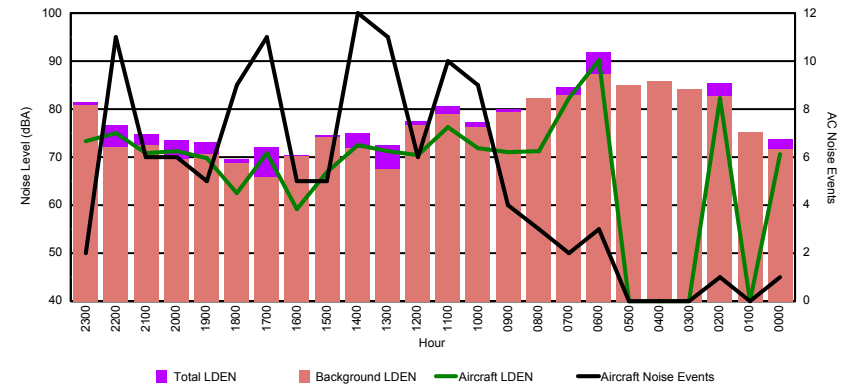


Luxembourg Airport Noise Distribution by Hour

Between 17/04/2017 00:00:00 and 17/04/2017 23:59:59 (Local Time)

Day	Aircraft Events	Total LDEN dB (A)	Aircraft LDEN dB(A)	Background LDEN dB(A)	Total LDay dB(A)	Total LEvening dB(A)	Total LNight dB (A)
17/04/17 0:00	1	73.8	70.7	71.7	-	-	73.8
17/04/17 1:00	-	74.9	-	75.2	-	-	74.9
17/04/17 2:00	1	85.5	82.2	82.8	-	-	85.5
17/04/17 3:00	-	83.3	-	84.1	-	-	83.3
17/04/17 4:00	-	84.5	-	85.8	-	-	84.5
17/04/17 5:00	-	84.2	-	84.9	-	-	84.2
17/04/17 6:00	3	91.8	90.2	87.3	-	-	91.8
17/04/17 7:00	2	84.5	82.2	83.0	84.5	-	-
17/04/17 8:00	3	81.1	71.2	82.3	81.1	-	-
17/04/17 9:00	4	79.9	71.1	79.4	79.9	-	-
17/04/17 10:00	9	77.3	71.9	76.3	77.3	-	-
17/04/17 11:00	10	80.6	76.3	78.9	80.6	-	-
17/04/17 12:00	6	77.5	70.4	76.6	77.5	-	-
17/04/17 13:00	11	72.6	71.2	67.5	72.6	-	-
17/04/17 14:00	12	75.1	72.6	71.9	75.1	-	-
17/04/17 15:00	5	74.6	66.8	74.1	74.6	-	-
17/04/17 16:00	5	70.5	59.2	70.3	70.5	-	-
17/04/17 17:00	11	72.0	70.9	65.9	72.0	-	-
17/04/17 18:00	9	69.6	62.5	68.8	69.6	-	-
17/04/17 19:00	5	73.2	69.8	70.6	-	73.2	-
17/04/17 20:00	6	73.5	71.3	69.6	-	73.5	-
17/04/17 21:00	6	74.7	70.8	72.6	-	74.7	-
17/04/17 22:00	11	76.7	75.0	72.1	-	76.7	-
17/04/17 23:00	2	81.5	73.4	80.9	-	-	81.5
	122	82.0	79.1	80.3	78.5	74.8	85.5

Location: DVOR NMT # 2



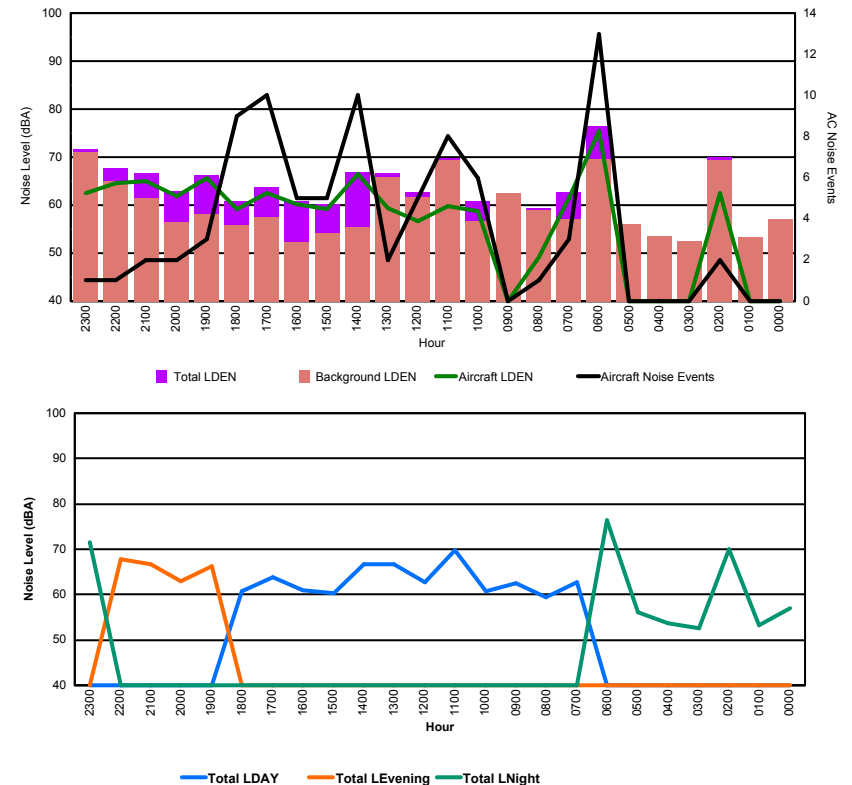


Luxembourg Airport Noise Distribution by Hour

Between 17/04/2017 00:00:00 and 17/04/2017 23:59:59 (Local Time)

Day	Aircraft Events	Total LDEN dB (A)	Aircraft LDEN dB(A)	Background LDEN dB(A)	Total LDay dB(A)	Total LEvening dB(A)	Total LNight dB (A)
17/04/17 0:00	-	57.0	-	57.1	-	-	57.0
17/04/17 1:00	-	53.3	-	53.3	-	-	53.3
17/04/17 2:00	2	70.1	62.4	69.3	-	-	70.1
17/04/17 3:00	-	52.6	-	52.6	-	-	52.6
17/04/17 4:00	-	53.6	-	53.6	-	-	53.6
17/04/17 5:00	-	56.0	-	56.0	-	-	56.0
17/04/17 6:00	13	76.4	75.4	69.5	-	-	76.4
17/04/17 7:00	3	62.8	61.5	57.1	62.8	-	-
17/04/17 8:00	1	59.4	49.2	59.0	59.4	-	-
17/04/17 9:00	-	62.6	-	62.6	62.6	-	-
17/04/17 10:00	6	60.8	58.8	56.6	60.8	-	-
17/04/17 11:00	8	69.7	59.7	69.3	69.7	-	-
17/04/17 12:00	5	62.8	56.7	61.6	62.8	-	-
17/04/17 13:00	2	66.6	59.4	65.8	66.6	-	-
17/04/17 14:00	10	66.8	66.4	55.5	66.8	-	-
17/04/17 15:00	5	60.2	59.1	54.2	60.2	-	-
17/04/17 16:00	5	60.9	60.3	52.2	60.9	-	-
17/04/17 17:00	10	63.8	62.6	57.6	63.8	-	-
17/04/17 18:00	9	60.8	59.2	55.8	60.8	-	-
17/04/17 19:00	3	66.3	65.6	58.2	-	66.3	-
17/04/17 20:00	2	63.0	61.9	56.4	-	63.0	-
17/04/17 21:00	2	66.6	65.0	61.5	-	66.6	-
17/04/17 22:00	1	67.8	64.5	65.1	-	67.8	-
17/04/17 23:00	1	71.6	62.5	71.1	-	-	71.6
	88	67.0	65.4	63.7	64.3	66.2	69.4

Location: Mid Runway NMT # 3



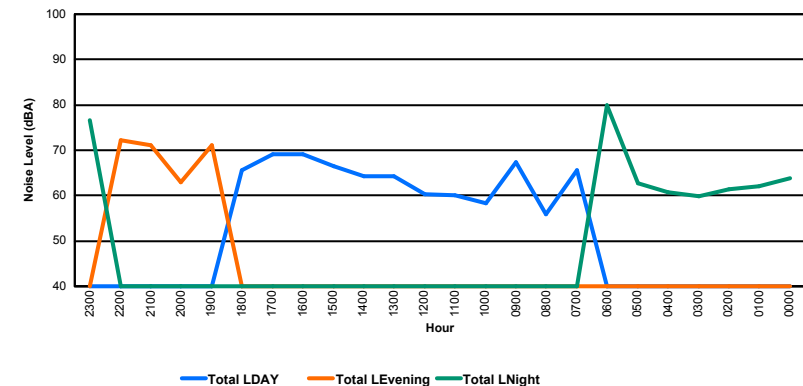
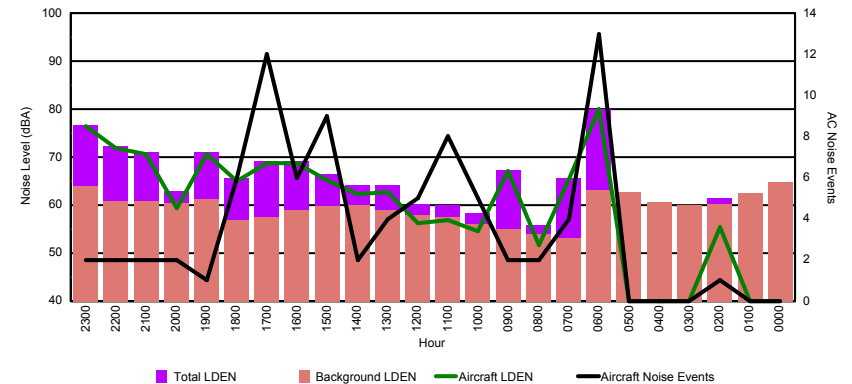


Luxembourg Airport Noise Distribution by Hour

Between 17/04/2017 00:00:00 and 17/04/2017 23:59:59 (Local Time)

Day	Aircraft Events	Total LDEN dB (A)	Aircraft LDEN dB(A)	Background LDEN dB(A)	Total LDay dB(A)	Total LEvening dB(A)	Total LNight dB (A)
17/04/17 0:00	-	63.8	-	64.7	-	-	63.8
17/04/17 1:00	-	62.1	-	62.5	-	-	62.1
17/04/17 2:00	1	61.5	55.5	60.3	-	-	61.5
17/04/17 3:00	-	59.9	-	59.9	-	-	59.9
17/04/17 4:00	-	60.7	-	60.7	-	-	60.7
17/04/17 5:00	-	62.8	-	62.8	-	-	62.8
17/04/17 6:00	13	80.0	79.9	63.2	-	-	80.0
17/04/17 7:00	4	65.7	65.5	53.2	65.7	-	-
17/04/17 8:00	2	55.9	51.7	53.9	55.9	-	-
17/04/17 9:00	2	67.3	67.0	55.0	67.3	-	-
17/04/17 10:00	5	58.3	54.6	56.0	58.3	-	-
17/04/17 11:00	8	60.0	56.8	57.4	60.0	-	-
17/04/17 12:00	5	60.2	56.3	58.0	60.2	-	-
17/04/17 13:00	4	64.2	62.7	58.9	64.2	-	-
17/04/17 14:00	2	64.2	62.2	59.9	64.2	-	-
17/04/17 15:00	9	66.4	65.3	59.8	66.4	-	-
17/04/17 16:00	6	69.2	68.8	59.0	69.2	-	-
17/04/17 17:00	12	69.1	68.8	57.6	69.1	-	-
17/04/17 18:00	6	65.6	65.0	56.8	65.6	-	-
17/04/17 19:00	1	71.1	70.6	61.3	-	71.1	-
17/04/17 20:00	2	63.0	59.3	60.5	-	63.0	-
17/04/17 21:00	2	71.1	70.7	60.9	-	71.1	-
17/04/17 22:00	2	72.2	71.8	60.8	-	72.2	-
17/04/17 23:00	2	76.7	76.5	64.0	-	-	76.7
	88	70.0	70.6	60.4	65.4	70.4	72.9

Location: NDB-Hamm NMT # 4





Luxembourg Airport Noise Distribution by Hour

Between 17/04/2017 00:00:00 and 17/04/2017 23:59:59 (Local Time)

Day	Aircraft Events	Total LDEN dB (A)	Aircraft LDEN dB(A)	Background LDEN dB(A)	Total LDay dB(A)	Total LEvening dB(A)	Total LNight dB (A)
17/04/17 0:00	-	65.5	-	66.7	-	-	65.5
17/04/17 1:00	-	63.5	-	64.3	-	-	63.5
17/04/17 2:00	1	62.5	49.3	62.7	-	-	62.5
17/04/17 3:00	-	63.8	-	63.9	-	-	63.8
17/04/17 4:00	-	61.3	-	61.3	-	-	61.3
17/04/17 5:00	-	63.4	-	63.5	-	-	63.4
17/04/17 6:00	12	72.6	71.8	66.0	-	-	72.6
17/04/17 7:00	3	60.3	57.1	58.1	60.3	-	-
17/04/17 8:00	3	57.2	47.3	57.3	57.2	-	-
17/04/17 9:00	2	61.5	55.1	60.5	61.5	-	-
17/04/17 10:00	-	58.7	-	58.8	58.7	-	-
17/04/17 11:00	4	60.1	51.7	59.6	60.1	-	-
17/04/17 12:00	2	62.0	47.5	61.9	62.0	-	-
17/04/17 13:00	4	59.5	53.9	58.3	59.5	-	-
17/04/17 14:00	2	60.8	57.6	57.9	60.8	-	-
17/04/17 15:00	9	61.6	58.6	58.9	61.6	-	-
17/04/17 16:00	6	63.9	62.4	58.4	63.9	-	-
17/04/17 17:00	12	62.9	61.2	58.5	62.9	-	-
17/04/17 18:00	6	63.7	58.1	62.4	63.7	-	-
17/04/17 19:00	1	65.2	61.4	62.8	-	65.2	-
17/04/17 20:00	2	62.5	52.8	62.1	-	62.5	-
17/04/17 21:00	2	64.3	60.7	61.8	-	64.3	-
17/04/17 22:00	2	64.6	62.3	60.7	-	64.6	-
17/04/17 23:00	2	69.6	67.7	65.0	-	-	69.6
	75	64.5	62.5	62.1	61.4	64.3	67.1

Location: Gare centrale NMT # 5

