

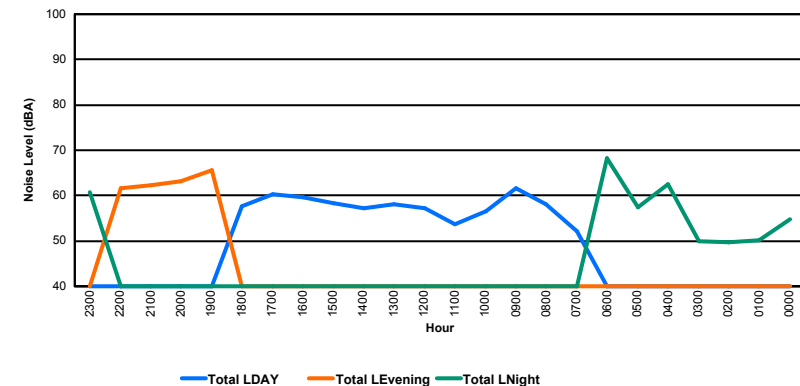
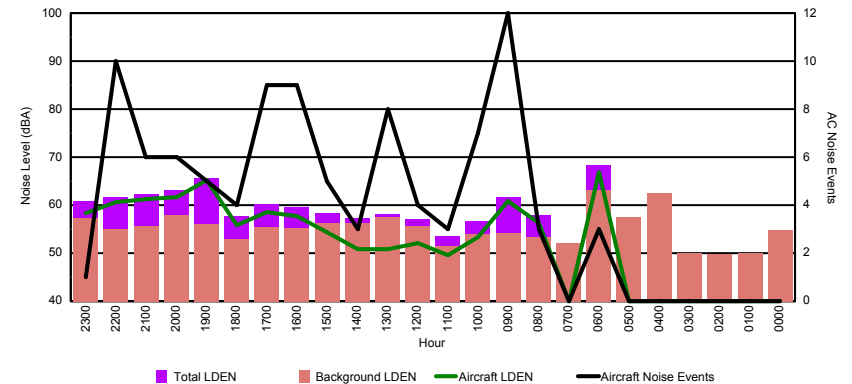


Luxembourg Airport Noise Distribution by Hour

Between 15/04/2016 00:00:00 and 15/04/2016 23:59:59 (Local Time)

Day	Aircraft Events	Total LDEN dB (A)	Aircraft LDEN dB(A)	Background LDEN dB(A)	Total LDay dB(A)	Total LEvening dB(A)	Total LNight dB (A)
15/04/16 0:00	-	54.7	-	54.8	-	-	54.7
15/04/16 1:00	-	50.1	-	50.1	-	-	50.1
15/04/16 2:00	-	49.7	-	49.7	-	-	49.7
15/04/16 3:00	-	50.0	-	50.0	-	-	50.0
15/04/16 4:00	-	62.5	-	62.4	-	-	62.5
15/04/16 5:00	-	57.4	-	57.4	-	-	57.4
15/04/16 6:00	3	68.3	66.8	63.1	-	-	68.3
15/04/16 7:00	-	52.1	-	52.1	52.1	-	-
15/04/16 8:00	3	58.0	56.2	53.4	58.0	-	-
15/04/16 9:00	12	61.7	60.9	54.1	61.7	-	-
15/04/16 10:00	7	56.6	53.3	53.9	56.6	-	-
15/04/16 11:00	3	53.6	49.6	51.5	53.6	-	-
15/04/16 12:00	4	57.1	52.0	55.6	57.1	-	-
15/04/16 13:00	8	58.1	50.9	57.5	58.1	-	-
15/04/16 14:00	3	57.3	50.8	56.3	57.3	-	-
15/04/16 15:00	5	58.3	54.3	56.2	58.3	-	-
15/04/16 16:00	9	59.6	57.8	55.2	59.6	-	-
15/04/16 17:00	9	60.2	58.6	55.4	60.2	-	-
15/04/16 18:00	4	57.7	55.9	53.0	57.7	-	-
15/04/16 19:00	5	65.7	65.2	56.0	-	65.7	-
15/04/16 20:00	6	63.1	61.6	57.9	-	63.1	-
15/04/16 21:00	6	62.3	61.3	55.7	-	62.3	-
15/04/16 22:00	10	61.7	60.7	55.1	-	61.7	-
15/04/16 23:00	1	60.8	58.3	57.3	-	-	60.8
	98	60.6	60.0	56.6	58.2	63.5	61.3

Location: Roodt/Syr NMT # 1



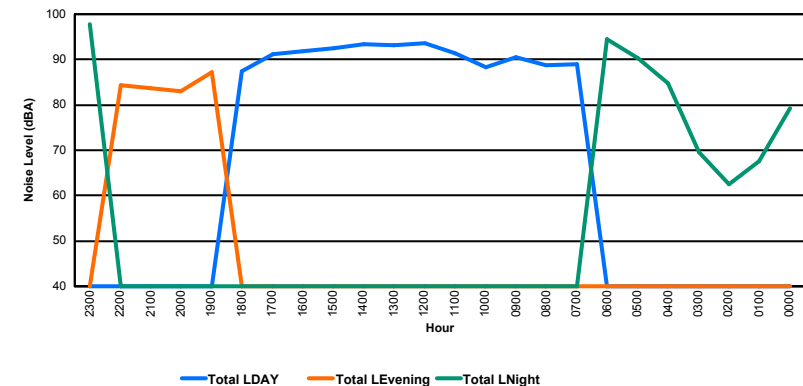
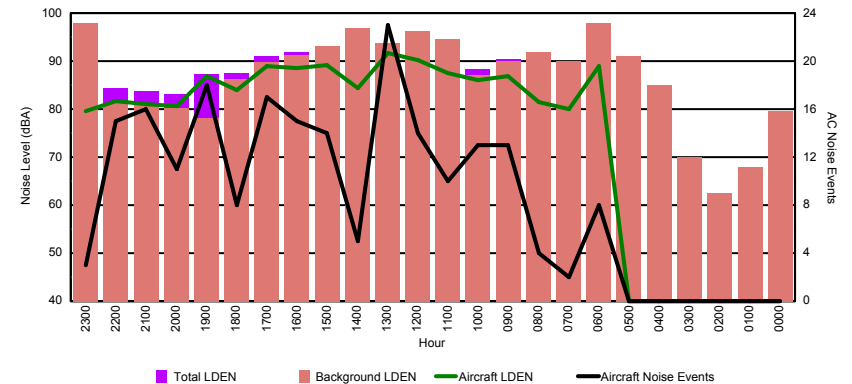


Luxembourg Airport Noise Distribution by Hour

Between 15/04/2016 00:00:00 and 15/04/2016 23:59:59 (Local Time)

Day	Aircraft Events	Total LDEN dB (A)	Aircraft LDEN dB(A)	Background LDEN dB(A)	Total LDay dB(A)	Total LEvening dB(A)	Total LNight dB (A)
15/04/16 0:00	-	79.2	-	79.6	-	-	79.2
15/04/16 1:00	-	67.5	-	68.0	-	-	67.5
15/04/16 2:00	-	62.4	-	62.6	-	-	62.4
15/04/16 3:00	-	69.6	-	70.0	-	-	69.6
15/04/16 4:00	-	84.7	-	85.0	-	-	84.7
15/04/16 5:00	-	90.3	-	91.0	-	-	90.3
15/04/16 6:00	8	94.6	89.0	97.9	-	-	94.6
15/04/16 7:00	2	88.9	80.1	90.1	88.9	-	-
15/04/16 8:00	4	88.7	81.5	91.9	88.7	-	-
15/04/16 9:00	13	90.5	86.9	90.0	90.5	-	-
15/04/16 10:00	13	88.4	86.1	87.0	88.4	-	-
15/04/16 11:00	10	91.4	87.4	94.6	91.4	-	-
15/04/16 12:00	14	93.7	90.2	96.2	93.7	-	-
15/04/16 13:00	23	93.2	91.7	93.8	93.2	-	-
15/04/16 14:00	5	93.4	84.3	96.9	93.4	-	-
15/04/16 15:00	14	92.5	89.2	93.1	92.5	-	-
15/04/16 16:00	15	91.9	88.6	91.2	91.9	-	-
15/04/16 17:00	17	91.1	89.0	89.7	91.1	-	-
15/04/16 18:00	8	87.5	83.9	86.2	87.5	-	-
15/04/16 19:00	18	87.2	86.8	78.1	-	87.2	-
15/04/16 20:00	11	83.1	80.6	80.2	-	83.1	-
15/04/16 21:00	16	83.7	81.0	81.1	-	83.7	-
15/04/16 22:00	15	84.3	81.6	81.3	-	84.3	-
15/04/16 23:00	3	97.8	79.5	98.0	-	-	97.8
	209	90.7	86.9	92.0	91.4	84.9	91.1

Location: DVOR NMT # 2

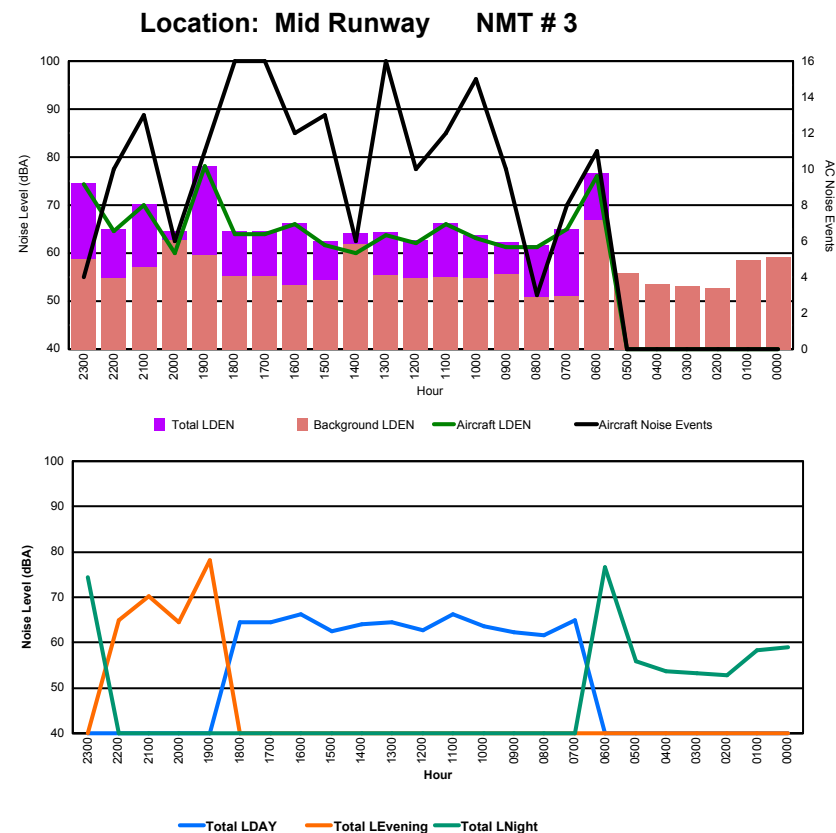




Luxembourg Airport Noise Distribution by Hour

Between 15/04/2016 00:00:00 and 15/04/2016 23:59:59 (Local Time)

Day	Aircraft Events	Total LDEN dB (A)	Aircraft LDEN dB(A)	Background LDEN dB(A)	Total LDay dB(A)	Total LEvening dB(A)	Total LNight dB (A)
15/04/16 0:00	-	59.0	-	59.1	-	-	59.0
15/04/16 1:00	-	58.4	-	58.5	-	-	58.4
15/04/16 2:00	-	52.8	-	52.8	-	-	52.8
15/04/16 3:00	-	53.2	-	53.2	-	-	53.2
15/04/16 4:00	-	53.6	-	53.6	-	-	53.6
15/04/16 5:00	-	55.9	-	55.9	-	-	55.9
15/04/16 6:00	11	76.6	76.1	66.9	-	-	76.6
15/04/16 7:00	8	65.0	64.9	51.0	65.0	-	-
15/04/16 8:00	3	61.6	61.3	50.8	61.6	-	-
15/04/16 9:00	10	62.2	61.2	55.6	62.2	-	-
15/04/16 10:00	15	63.7	63.1	54.7	63.7	-	-
15/04/16 11:00	12	66.3	66.0	54.9	66.3	-	-
15/04/16 12:00	10	62.8	62.1	54.8	62.8	-	-
15/04/16 13:00	16	64.4	63.8	55.4	64.4	-	-
15/04/16 14:00	6	64.1	60.1	61.9	64.1	-	-
15/04/16 15:00	13	62.4	61.7	54.4	62.4	-	-
15/04/16 16:00	12	66.3	66.1	53.3	66.3	-	-
15/04/16 17:00	16	64.5	64.0	55.2	64.5	-	-
15/04/16 18:00	16	64.5	64.0	55.2	64.5	-	-
15/04/16 19:00	11	78.2	78.1	59.5	-	78.2	-
15/04/16 20:00	6	64.6	59.9	62.8	-	64.6	-
15/04/16 21:00	13	70.3	70.1	57.1	-	70.3	-
15/04/16 22:00	10	65.0	64.6	54.7	-	65.0	-
15/04/16 23:00	4	74.5	74.4	58.8	-	-	74.5
	192	69.0	69.9	58.3	64.2	73.2	69.8

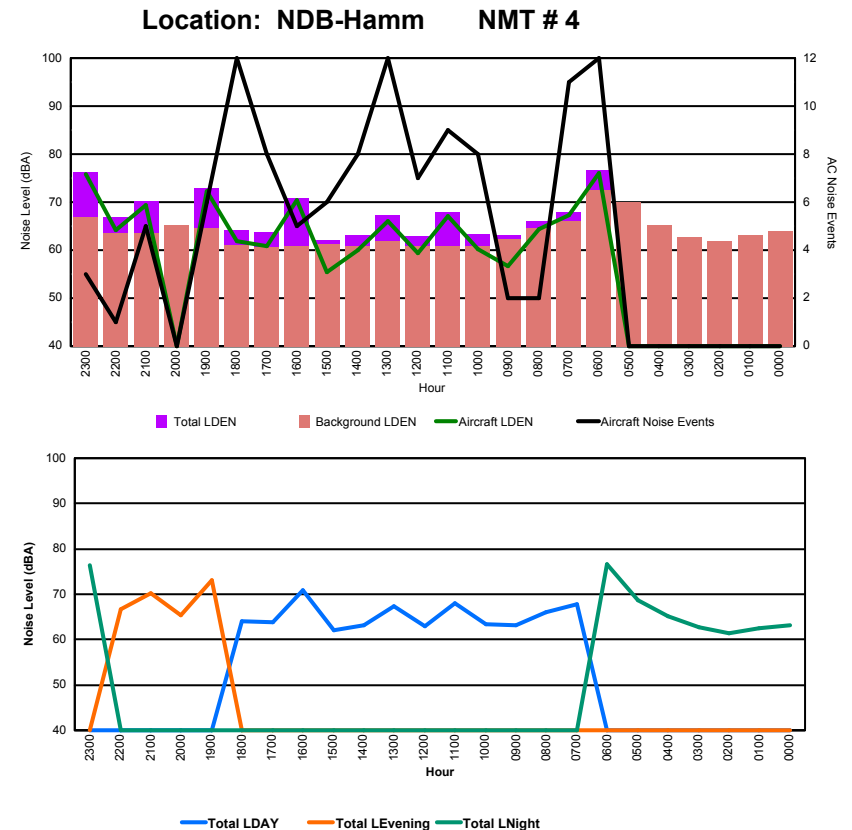




Luxembourg Airport Noise Distribution by Hour

Between 15/04/2016 00:00:00 and 15/04/2016 23:59:59 (Local Time)

Day	Aircraft Events	Total LDEN dB (A)	Aircraft LDEN dB(A)	Background LDEN dB(A)	Total LDay dB(A)	Total LEvening dB(A)	Total LNight dB (A)
15/04/16 0:00	-	63.2	-	63.9	-	-	63.2
15/04/16 1:00	-	62.6	-	63.1	-	-	62.6
15/04/16 2:00	-	61.4	-	61.8	-	-	61.4
15/04/16 3:00	-	62.7	-	62.7	-	-	62.7
15/04/16 4:00	-	65.1	-	65.3	-	-	65.1
15/04/16 5:00	-	68.6	-	70.1	-	-	68.6
15/04/16 6:00	12	76.7	76.0	72.5	-	-	76.7
15/04/16 7:00	11	67.9	67.2	66.0	67.9	-	-
15/04/16 8:00	2	66.1	64.3	64.6	66.1	-	-
15/04/16 9:00	2	63.1	56.6	62.2	63.1	-	-
15/04/16 10:00	8	63.4	60.3	60.8	63.4	-	-
15/04/16 11:00	9	68.0	67.1	60.9	68.0	-	-
15/04/16 12:00	7	63.0	59.3	60.8	63.0	-	-
15/04/16 13:00	12	67.3	66.0	61.9	67.3	-	-
15/04/16 14:00	8	63.2	59.9	60.8	63.2	-	-
15/04/16 15:00	6	62.1	55.5	61.2	62.1	-	-
15/04/16 16:00	5	70.8	70.4	60.8	70.8	-	-
15/04/16 17:00	8	63.8	60.9	60.7	63.8	-	-
15/04/16 18:00	12	64.1	61.8	61.1	64.1	-	-
15/04/16 19:00	6	73.0	72.3	64.5	-	73.0	-
15/04/16 20:00	-	65.3	-	65.3	-	65.3	-
15/04/16 21:00	5	70.3	69.3	63.6	-	70.3	-
15/04/16 22:00	1	66.8	64.1	63.5	-	66.8	-
15/04/16 23:00	3	76.3	75.8	66.8	-	-	76.3
	117	69.1	69.2	64.9	66.1	69.9	71.3



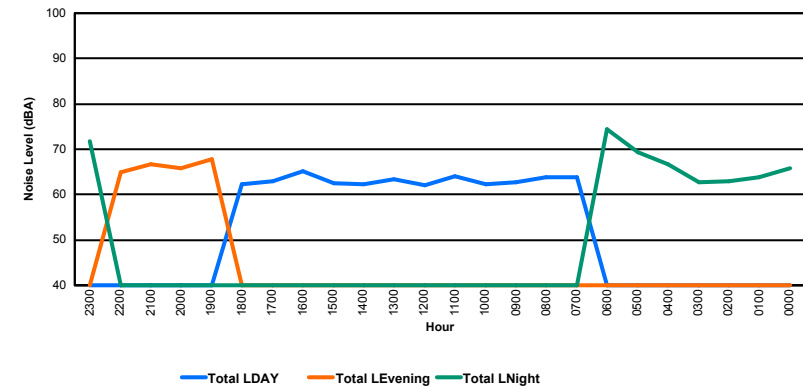
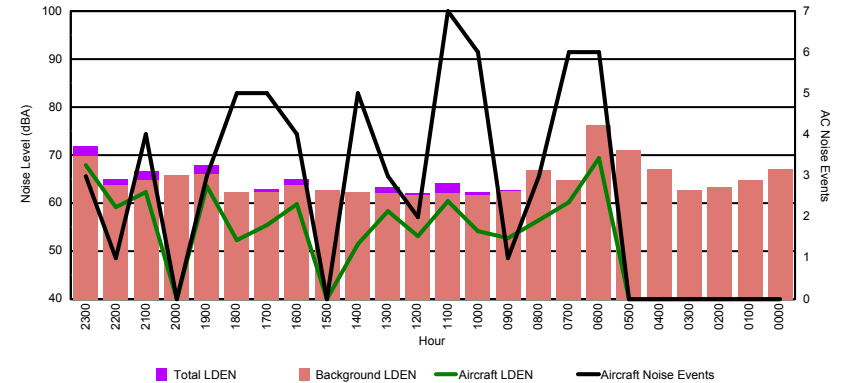


Luxembourg Airport Noise Distribution by Hour

Between 15/04/2016 00:00:00 and 15/04/2016 23:59:59 (Local Time)

Day	Aircraft Events	Total LDEN dB (A)	Aircraft LDEN dB(A)	Background LDEN dB(A)	Total LDay dB(A)	Total LEvening dB(A)	Total LNight dB (A)
15/04/16 0:00	-	65.8	-	67.1	-	-	65.8
15/04/16 1:00	-	63.8	-	64.7	-	-	63.8
15/04/16 2:00	-	62.9	-	63.4	-	-	62.9
15/04/16 3:00	-	62.7	-	62.7	-	-	62.7
15/04/16 4:00	-	66.6	-	67.0	-	-	66.6
15/04/16 5:00	-	69.4	-	71.1	-	-	69.4
15/04/16 6:00	6	74.4	69.3	76.3	-	-	74.4
15/04/16 7:00	6	63.9	60.3	64.7	63.9	-	-
15/04/16 8:00	3	63.9	56.4	66.8	63.9	-	-
15/04/16 9:00	1	62.7	52.8	62.4	62.7	-	-
15/04/16 10:00	6	62.3	54.2	61.7	62.3	-	-
15/04/16 11:00	7	64.1	60.4	62.1	64.1	-	-
15/04/16 12:00	2	62.1	53.2	61.7	62.1	-	-
15/04/16 13:00	3	63.4	58.3	62.0	63.4	-	-
15/04/16 14:00	5	62.3	51.5	62.2	62.3	-	-
15/04/16 15:00	-	62.6	-	62.7	62.6	-	-
15/04/16 16:00	4	65.1	59.7	63.8	65.1	-	-
15/04/16 17:00	5	62.9	55.5	62.3	62.9	-	-
15/04/16 18:00	5	62.3	52.2	62.2	62.3	-	-
15/04/16 19:00	3	67.9	63.6	66.0	-	67.9	-
15/04/16 20:00	-	65.8	-	65.9	-	65.8	-
15/04/16 21:00	4	66.7	62.3	64.8	-	66.7	-
15/04/16 22:00	1	65.0	59.2	63.8	-	65.0	-
15/04/16 23:00	3	71.8	68.0	69.8	-	-	71.8
	64	66.6	62.0	67.0	63.2	66.5	69.2

Location: Gare centrale NMT # 5



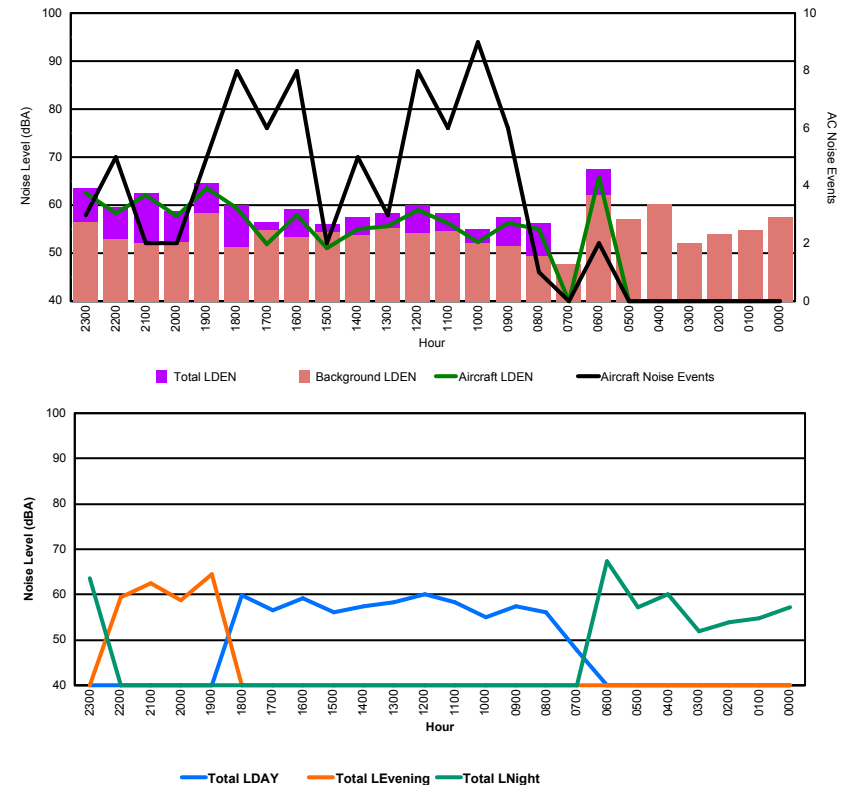


Luxembourg Airport Noise Distribution by Hour

Between 16/04/2016 00:00:00 and 16/04/2016 23:59:59 (Local Time)

Day	Aircraft Events	Total LDEN dB (A)	Aircraft LDEN dB(A)	Background LDEN dB(A)	Total LDay dB(A)	Total LEvening dB(A)	Total LNight dB (A)
16/04/16 0:00	-	57.3	-	57.4	-	-	57.3
16/04/16 1:00	-	54.7	-	54.7	-	-	54.7
16/04/16 2:00	-	53.8	-	53.9	-	-	53.8
16/04/16 3:00	-	52.0	-	52.0	-	-	52.0
16/04/16 4:00	-	60.1	-	60.2	-	-	60.1
16/04/16 5:00	-	57.1	-	57.1	-	-	57.1
16/04/16 6:00	2	67.4	65.9	62.0	-	-	67.4
16/04/16 7:00	-	47.7	-	47.7	47.7	-	-
16/04/16 8:00	1	56.2	55.1	49.3	56.2	-	-
16/04/16 9:00	6	57.5	56.3	51.4	57.5	-	-
16/04/16 10:00	9	55.1	52.3	52.0	55.1	-	-
16/04/16 11:00	6	58.3	56.2	54.5	58.3	-	-
16/04/16 12:00	8	60.1	58.9	54.2	60.1	-	-
16/04/16 13:00	3	58.4	55.7	55.3	58.4	-	-
16/04/16 14:00	5	57.4	55.1	53.7	57.4	-	-
16/04/16 15:00	2	56.0	51.0	54.4	56.0	-	-
16/04/16 16:00	8	59.2	58.0	53.3	59.2	-	-
16/04/16 17:00	6	56.5	51.9	54.7	56.5	-	-
16/04/16 18:00	8	59.9	59.3	51.2	59.9	-	-
16/04/16 19:00	5	64.6	63.5	58.4	-	64.6	-
16/04/16 20:00	2	58.8	57.7	52.2	-	58.8	-
16/04/16 21:00	2	62.4	62.0	52.1	-	62.4	-
16/04/16 22:00	5	59.5	58.4	52.9	-	59.5	-
16/04/16 23:00	3	63.5	62.6	56.4	-	-	63.5
	81	60.0	59.6	55.5	57.6	62.0	61.2

Location: Roodt/Syr NMT # 1



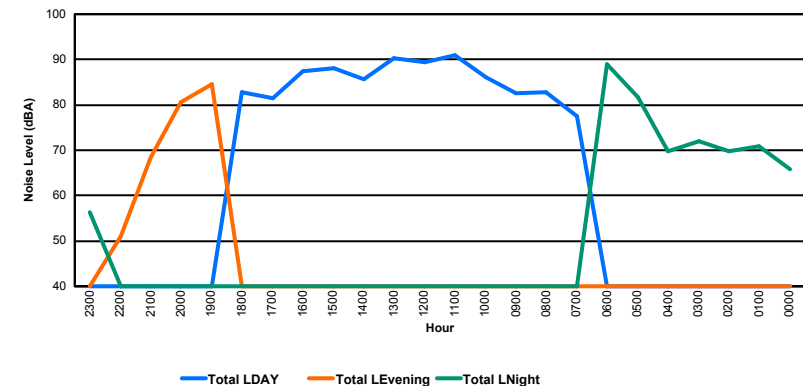
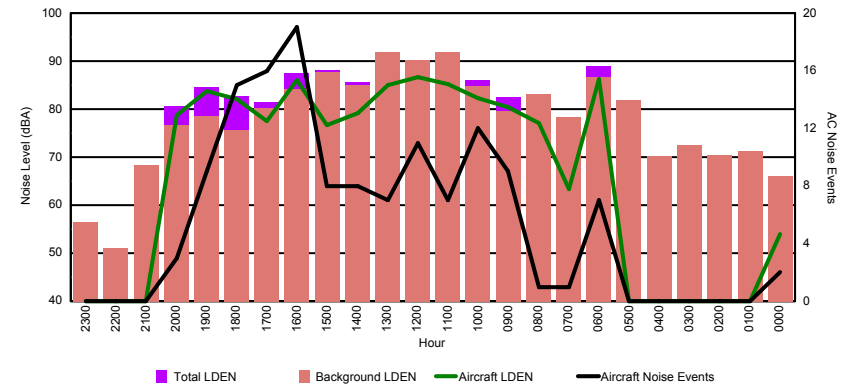


Luxembourg Airport Noise Distribution by Hour

Between 16/04/2016 00:00:00 and 16/04/2016 23:59:59 (Local Time)

Day	Aircraft Events	Total LDEN dB (A)	Aircraft LDEN dB(A)	Background LDEN dB(A)	Total LDay dB(A)	Total LEvening dB(A)	Total LNight dB (A)
16/04/16 0:00	2	65.8	54.0	66.1	-	-	65.8
16/04/16 1:00	-	70.9	-	71.3	-	-	70.9
16/04/16 2:00	-	69.8	-	70.4	-	-	69.8
16/04/16 3:00	-	72.0	-	72.6	-	-	72.0
16/04/16 4:00	-	69.8	-	70.2	-	-	69.8
16/04/16 5:00	-	81.7	-	81.8	-	-	81.7
16/04/16 6:00	7	88.9	86.3	86.6	-	-	88.9
16/04/16 7:00	1	77.6	63.3	78.4	77.6	-	-
16/04/16 8:00	1	82.7	77.1	83.1	82.7	-	-
16/04/16 9:00	9	82.5	80.5	79.5	82.5	-	-
16/04/16 10:00	12	86.1	82.2	84.7	86.1	-	-
16/04/16 11:00	7	91.0	85.2	91.8	91.0	-	-
16/04/16 12:00	11	89.4	86.6	90.2	89.4	-	-
16/04/16 13:00	7	90.2	85.0	91.9	90.2	-	-
16/04/16 14:00	8	85.6	79.2	85.1	85.6	-	-
16/04/16 15:00	8	88.1	76.6	87.8	88.1	-	-
16/04/16 16:00	19	87.5	86.0	84.1	87.5	-	-
16/04/16 17:00	16	81.5	77.6	80.2	81.5	-	-
16/04/16 18:00	15	82.7	82.0	75.7	82.7	-	-
16/04/16 19:00	9	84.6	83.7	78.5	-	84.6	-
16/04/16 20:00	3	80.6	78.7	76.7	-	80.6	-
16/04/16 21:00	-	68.4	-	68.4	-	68.4	-
16/04/16 22:00	-	51.1	-	51.1	-	51.1	-
16/04/16 23:00	-	56.4	-	56.4	-	-	56.4
	135	84.8	82.6	84.6	86.9	80.1	80.9

Location: DVOR NMT # 2



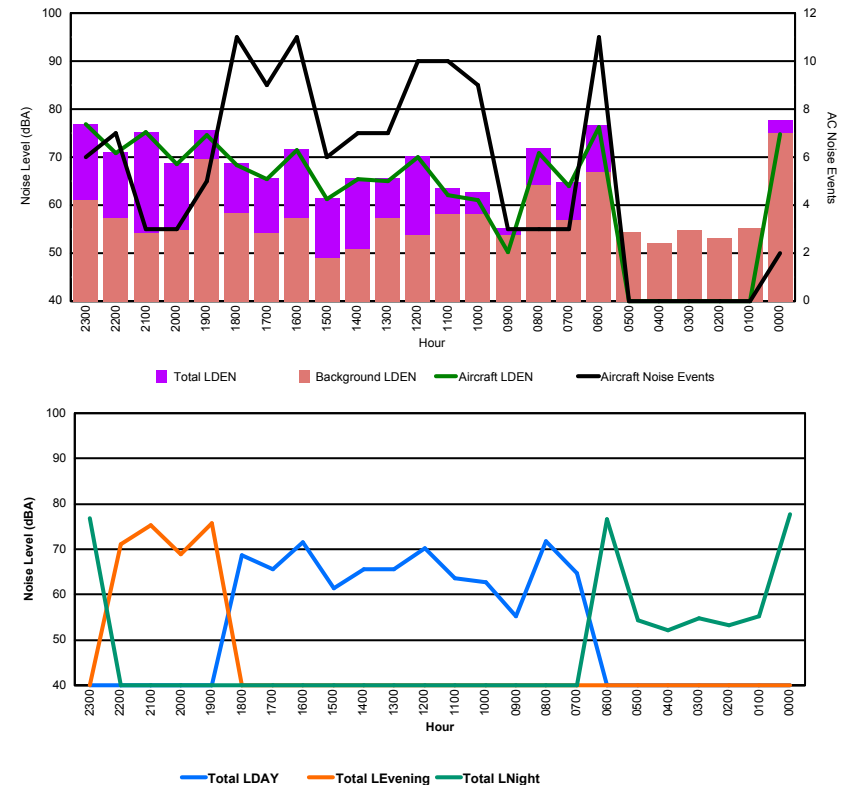


Luxembourg Airport Noise Distribution by Hour

Between 16/04/2016 00:00:00 and 16/04/2016 23:59:59 (Local Time)

Day	Aircraft Events	Total LDEN dB (A)	Aircraft LDEN dB(A)	Background LDEN dB(A)	Total LDay dB(A)	Total LEvening dB(A)	Total LNight dB (A)
16/04/16 0:00	2	77.8	74.7	74.9	-	-	77.8
16/04/16 1:00	-	55.3	-	55.3	-	-	55.3
16/04/16 2:00	-	53.2	-	53.2	-	-	53.2
16/04/16 3:00	-	54.7	-	54.7	-	-	54.7
16/04/16 4:00	-	52.1	-	52.1	-	-	52.1
16/04/16 5:00	-	54.4	-	54.4	-	-	54.4
16/04/16 6:00	11	76.7	76.2	66.8	-	-	76.7
16/04/16 7:00	3	64.7	63.9	56.9	64.7	-	-
16/04/16 8:00	3	71.8	70.9	64.2	71.8	-	-
16/04/16 9:00	3	55.2	50.2	53.7	55.2	-	-
16/04/16 10:00	9	62.8	61.1	58.1	62.8	-	-
16/04/16 11:00	10	63.5	62.1	58.2	63.5	-	-
16/04/16 12:00	10	70.2	70.1	53.7	70.2	-	-
16/04/16 13:00	7	65.6	65.0	57.3	65.6	-	-
16/04/16 14:00	7	65.6	65.5	50.8	65.6	-	-
16/04/16 15:00	6	61.5	61.2	48.9	61.5	-	-
16/04/16 16:00	11	71.6	71.4	57.3	71.6	-	-
16/04/16 17:00	9	65.7	65.5	54.1	65.7	-	-
16/04/16 18:00	11	68.7	68.3	58.4	68.7	-	-
16/04/16 19:00	5	75.7	74.5	69.5	-	75.7	-
16/04/16 20:00	3	68.8	68.6	54.7	-	68.8	-
16/04/16 21:00	3	75.2	75.2	54.1	-	75.2	-
16/04/16 22:00	7	71.0	70.8	57.3	-	71.0	-
16/04/16 23:00	6	76.9	76.8	61.0	-	-	76.9
	126	71.2	71.4	63.6	67.5	73.5	72.9

Location: Mid Runway NMT # 3



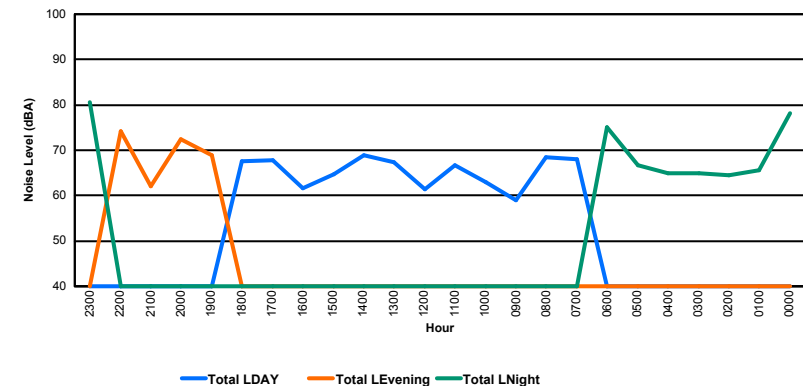
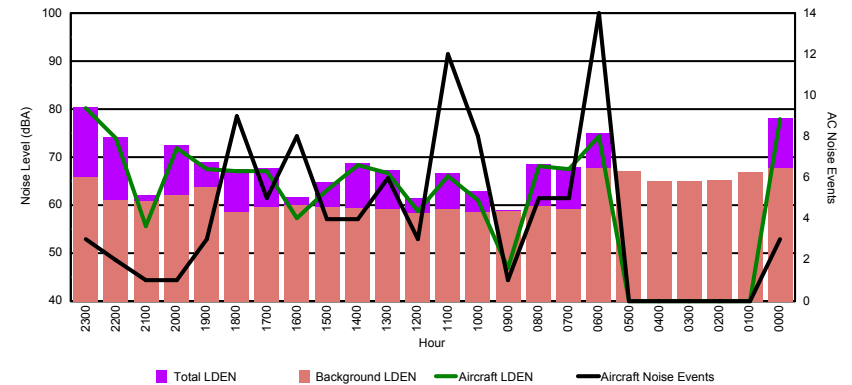


Luxembourg Airport Noise Distribution by Hour

Between 16/04/2016 00:00:00 and 16/04/2016 23:59:59 (Local Time)

Day	Aircraft Events	Total LDEN dB (A)	Aircraft LDEN dB(A)	Background LDEN dB(A)	Total LDay dB(A)	Total LEvening dB(A)	Total LNight dB (A)
16/04/16 0:00	3	78.2	78.0	67.7	-	-	78.2
16/04/16 1:00	-	65.7	-	66.8	-	-	65.7
16/04/16 2:00	-	64.4	-	65.2	-	-	64.4
16/04/16 3:00	-	64.9	-	65.0	-	-	64.9
16/04/16 4:00	-	64.9	-	65.1	-	-	64.9
16/04/16 5:00	-	66.7	-	67.1	-	-	66.7
16/04/16 6:00	14	75.0	74.4	67.8	-	-	75.0
16/04/16 7:00	5	68.0	67.6	59.1	68.0	-	-
16/04/16 8:00	5	68.5	68.1	59.8	68.5	-	-
16/04/16 9:00	1	59.0	46.8	58.8	59.0	-	-
16/04/16 10:00	8	62.9	61.0	58.6	62.9	-	-
16/04/16 11:00	12	66.7	66.0	59.1	66.7	-	-
16/04/16 12:00	3	61.5	58.8	58.3	61.5	-	-
16/04/16 13:00	6	67.3	66.6	59.2	67.3	-	-
16/04/16 14:00	4	68.8	68.3	59.3	68.8	-	-
16/04/16 15:00	4	64.8	63.2	59.6	64.8	-	-
16/04/16 16:00	8	61.7	57.3	60.0	61.7	-	-
16/04/16 17:00	5	67.7	67.0	59.6	67.7	-	-
16/04/16 18:00	9	67.6	67.0	58.5	67.6	-	-
16/04/16 19:00	3	69.0	67.4	63.8	-	69.0	-
16/04/16 20:00	1	72.4	71.9	62.1	-	72.4	-
16/04/16 21:00	1	62.0	55.6	60.9	-	62.0	-
16/04/16 22:00	2	74.1	73.9	61.1	-	74.1	-
16/04/16 23:00	3	80.5	80.3	65.9	-	-	80.5
	97	71.4	71.8	63.4	66.3	71.2	74.5

Location: NDB-Hamm NMT # 4



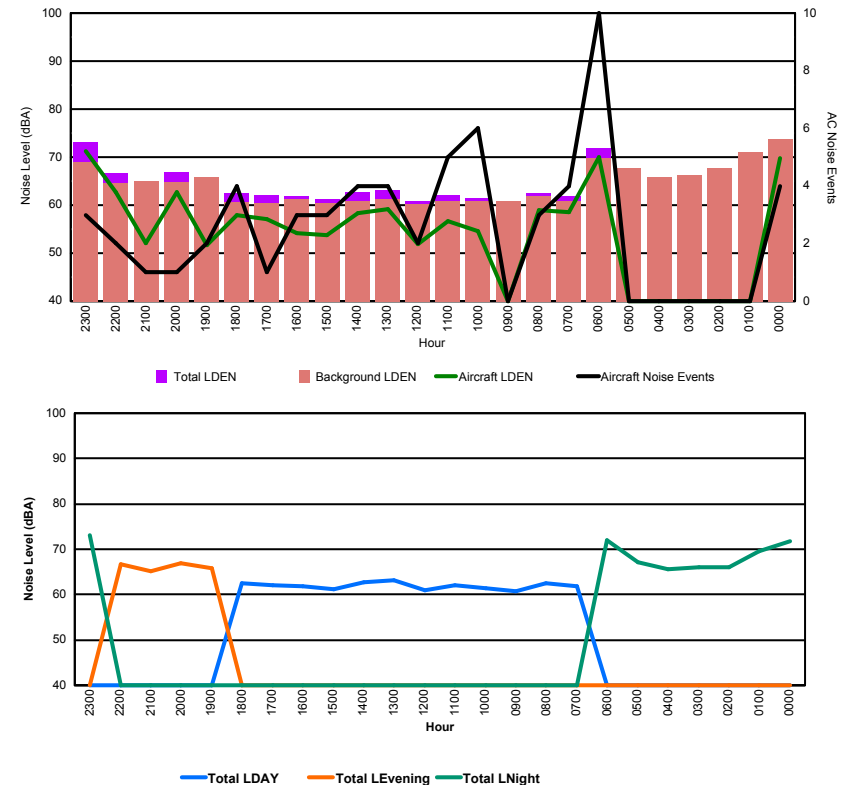


Luxembourg Airport Noise Distribution by Hour

Between 16/04/2016 00:00:00 and 16/04/2016 23:59:59 (Local Time)

Day	Aircraft Events	Total LDEN dB (A)	Aircraft LDEN dB(A)	Background LDEN dB(A)	Total LDay dB(A)	Total LEvening dB(A)	Total LNight dB (A)
16/04/16 0:00	4	71.8	69.7	73.8	-	-	71.8
16/04/16 1:00	-	69.5	-	71.1	-	-	69.5
16/04/16 2:00	-	66.1	-	67.7	-	-	66.1
16/04/16 3:00	-	66.0	-	66.3	-	-	66.0
16/04/16 4:00	-	65.6	-	65.8	-	-	65.6
16/04/16 5:00	-	67.1	-	67.7	-	-	67.1
16/04/16 6:00	10	71.9	69.9	69.7	-	-	71.9
16/04/16 7:00	4	61.9	58.5	60.8	61.9	-	-
16/04/16 8:00	3	62.6	58.9	61.9	62.6	-	-
16/04/16 9:00	-	60.8	-	60.9	60.8	-	-
16/04/16 10:00	6	61.5	54.5	60.8	61.5	-	-
16/04/16 11:00	5	62.1	56.6	60.9	62.1	-	-
16/04/16 12:00	2	60.9	51.9	60.3	60.9	-	-
16/04/16 13:00	4	63.1	59.1	61.3	63.1	-	-
16/04/16 14:00	4	62.7	58.4	60.9	62.7	-	-
16/04/16 15:00	3	61.2	53.8	60.4	61.2	-	-
16/04/16 16:00	3	61.9	54.1	61.2	61.9	-	-
16/04/16 17:00	1	62.1	57.0	60.5	62.1	-	-
16/04/16 18:00	4	62.4	58.0	60.6	62.4	-	-
16/04/16 19:00	2	65.9	51.6	65.8	-	65.9	-
16/04/16 20:00	1	66.9	62.7	64.8	-	66.9	-
16/04/16 21:00	1	65.1	52.0	64.9	-	65.1	-
16/04/16 22:00	2	66.6	62.8	64.6	-	66.6	-
16/04/16 23:00	3	73.2	71.2	69.0	-	-	73.2
	62	66.7	63.7	66.3	62.0	66.2	69.8

Location: Gare centrale NMT # 5



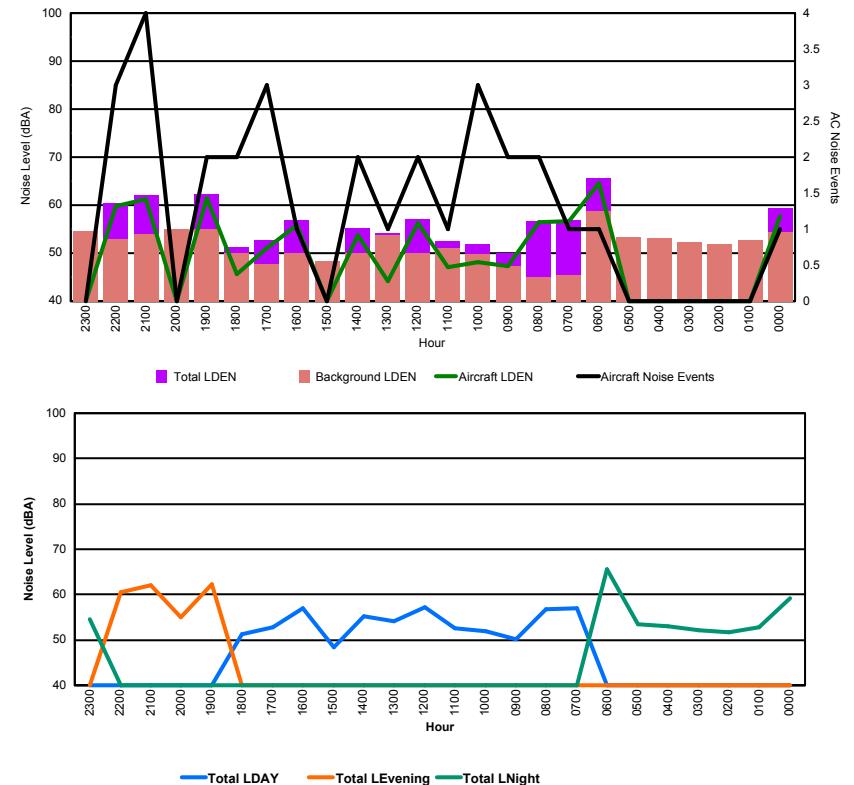


Luxembourg Airport Noise Distribution by Hour

Between 17/04/2016 00:00:00 and 17/04/2016 23:59:59 (Local Time)

Day	Aircraft Events	Total LDEN dB (A)	Aircraft LDEN dB(A)	Background LDEN dB(A)	Total LDay dB(A)	Total LEvening dB(A)	Total LNight dB (A)
17/04/16 0:00	1	59.3	57.7	54.4	-	-	59.3
17/04/16 1:00	-	52.8	-	52.8	-	-	52.8
17/04/16 2:00	-	51.8	-	51.8	-	-	51.8
17/04/16 3:00	-	52.2	-	52.2	-	-	52.2
17/04/16 4:00	-	53.1	-	53.2	-	-	53.1
17/04/16 5:00	-	53.4	-	53.4	-	-	53.4
17/04/16 6:00	1	65.6	64.6	58.8	-	-	65.6
17/04/16 7:00	1	56.9	56.6	45.4	56.9	-	-
17/04/16 8:00	2	56.7	56.4	45.0	56.7	-	-
17/04/16 9:00	2	50.1	47.2	47.2	50.1	-	-
17/04/16 10:00	3	51.9	48.1	49.7	51.9	-	-
17/04/16 11:00	1	52.5	47.0	51.1	52.5	-	-
17/04/16 12:00	2	57.1	56.2	50.0	57.1	-	-
17/04/16 13:00	1	54.2	44.2	53.8	54.2	-	-
17/04/16 14:00	2	55.3	53.8	49.9	55.3	-	-
17/04/16 15:00	-	48.4	-	48.4	48.4	-	-
17/04/16 16:00	1	56.9	55.8	50.1	56.9	-	-
17/04/16 17:00	3	52.7	51.0	47.8	52.7	-	-
17/04/16 18:00	2	51.2	45.7	49.9	51.2	-	-
17/04/16 19:00	2	62.3	61.4	55.0	-	62.3	-
17/04/16 20:00	-	55.0	-	55.0	-	55.0	-
17/04/16 21:00	4	62.0	61.3	53.9	-	62.0	-
17/04/16 22:00	3	60.5	59.7	52.9	-	60.5	-
17/04/16 23:00	-	54.5	-	54.5	-	-	54.5
	31	57.6	57.7	52.7	54.5	60.7	58.5

Location: Roodt/Syr NMT # 1



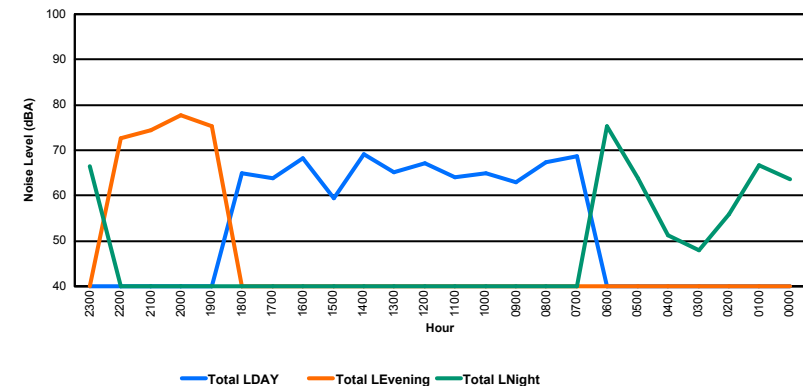
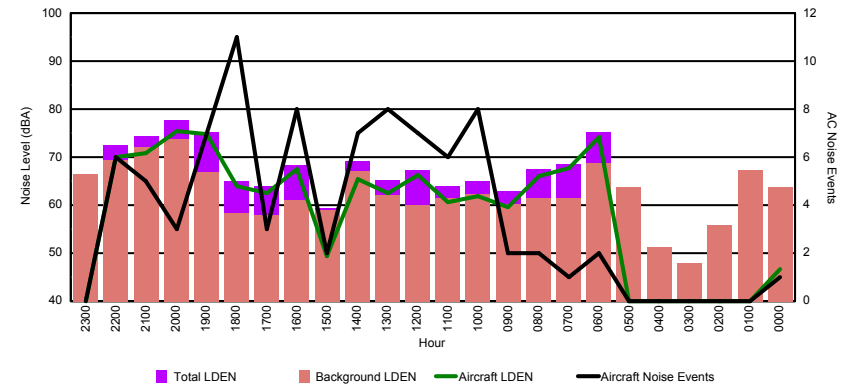


Luxembourg Airport Noise Distribution by Hour

Between 17/04/2016 00:00:00 and 17/04/2016 23:59:59 (Local Time)

Day	Aircraft Events	Total LDEN dB (A)	Aircraft LDEN dB(A)	Background LDEN dB(A)	Total LDay dB(A)	Total LEvening dB(A)	Total LNight dB (A)
17/04/16 0:00	1	63.7	46.6	63.7	-	-	63.7
17/04/16 1:00	-	66.8	-	67.2	-	-	66.8
17/04/16 2:00	-	55.9	-	55.9	-	-	55.9
17/04/16 3:00	-	47.9	-	47.9	-	-	47.9
17/04/16 4:00	-	51.3	-	51.3	-	-	51.3
17/04/16 5:00	-	63.8	-	63.8	-	-	63.8
17/04/16 6:00	2	75.3	74.2	68.8	-	-	75.3
17/04/16 7:00	1	68.6	67.7	61.4	68.6	-	-
17/04/16 8:00	2	67.4	66.1	61.5	67.4	-	-
17/04/16 9:00	2	62.9	59.5	60.3	62.9	-	-
17/04/16 10:00	8	64.9	61.9	62.2	64.9	-	-
17/04/16 11:00	6	64.0	60.7	61.5	64.0	-	-
17/04/16 12:00	7	67.2	66.3	60.1	67.2	-	-
17/04/16 13:00	8	65.2	62.4	62.0	65.2	-	-
17/04/16 14:00	7	69.2	65.4	67.0	69.2	-	-
17/04/16 15:00	2	59.4	49.3	59.0	59.4	-	-
17/04/16 16:00	8	68.3	67.5	61.0	68.3	-	-
17/04/16 17:00	3	63.9	62.6	57.9	63.9	-	-
17/04/16 18:00	11	64.9	64.0	58.3	64.9	-	-
17/04/16 19:00	7	75.3	74.7	66.9	-	75.3	-
17/04/16 20:00	3	77.7	75.5	73.7	-	77.7	-
17/04/16 21:00	5	74.4	70.9	72.0	-	74.4	-
17/04/16 22:00	6	72.6	70.1	69.3	-	72.6	-
17/04/16 23:00	-	66.5	-	66.5	-	-	66.5
	89	70.0	69.1	65.9	66.2	75.4	67.8

Location: DVOR NMT # 2



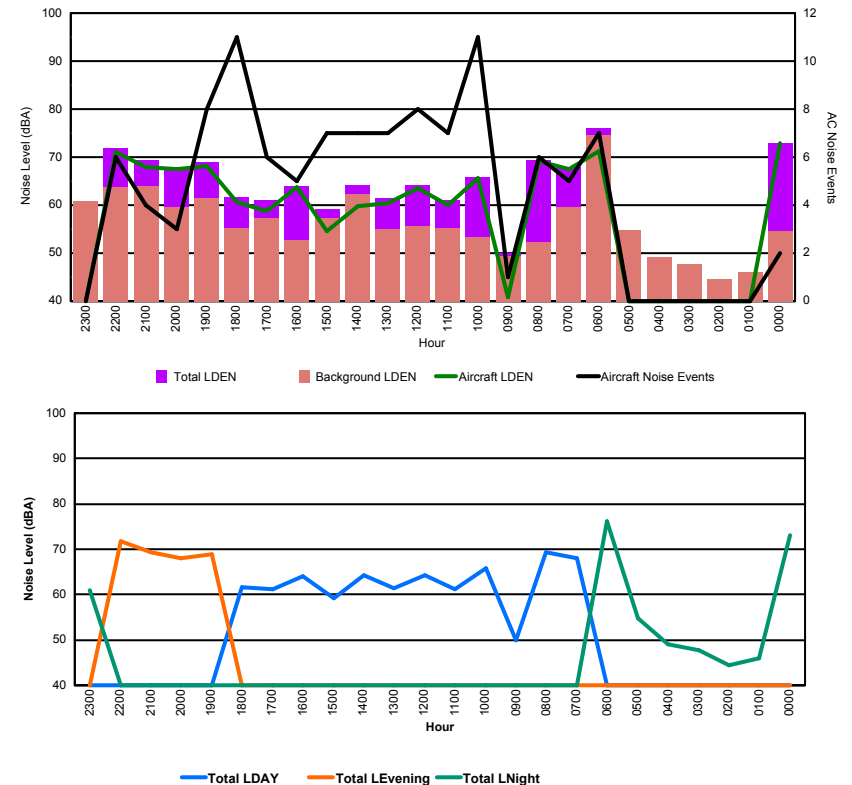


Luxembourg Airport Noise Distribution by Hour

Between 17/04/2016 00:00:00 and 17/04/2016 23:59:59 (Local Time)

Day	Aircraft Events	Total LDEN dB (A)	Aircraft LDEN dB(A)	Background LDEN dB(A)	Total LDay dB(A)	Total LEvening dB(A)	Total LNight dB (A)
17/04/16 0:00	2	73.0	72.9	54.5	-	-	73.0
17/04/16 1:00	-	46.0	-	46.0	-	-	46.0
17/04/16 2:00	-	44.5	-	44.5	-	-	44.5
17/04/16 3:00	-	47.7	-	47.7	-	-	47.7
17/04/16 4:00	-	49.1	-	49.1	-	-	49.1
17/04/16 5:00	-	54.7	-	54.7	-	-	54.7
17/04/16 6:00	7	76.1	71.3	74.5	-	-	76.1
17/04/16 7:00	5	68.0	67.4	59.5	68.0	-	-
17/04/16 8:00	6	69.4	69.2	52.3	69.4	-	-
17/04/16 9:00	1	49.9	40.8	49.4	49.9	-	-
17/04/16 10:00	11	65.8	65.6	53.4	65.8	-	-
17/04/16 11:00	7	61.1	59.9	55.2	61.1	-	-
17/04/16 12:00	8	64.2	63.6	55.6	64.2	-	-
17/04/16 13:00	7	61.5	60.4	55.0	61.5	-	-
17/04/16 14:00	7	64.2	59.8	62.3	64.2	-	-
17/04/16 15:00	7	59.1	54.6	57.3	59.1	-	-
17/04/16 16:00	5	64.0	63.7	52.8	64.0	-	-
17/04/16 17:00	6	61.1	58.8	57.2	61.1	-	-
17/04/16 18:00	11	61.7	60.6	55.3	61.7	-	-
17/04/16 19:00	8	69.0	68.2	61.5	-	69.0	-
17/04/16 20:00	3	68.0	67.4	59.6	-	68.0	-
17/04/16 21:00	4	69.3	67.9	64.0	-	69.3	-
17/04/16 22:00	6	71.8	71.1	63.8	-	71.8	-
17/04/16 23:00	-	60.9	-	60.9	-	-	60.9
	111	67.4	67.1	62.5	64.4	69.8	68.9

Location: Mid Runway NMT # 3



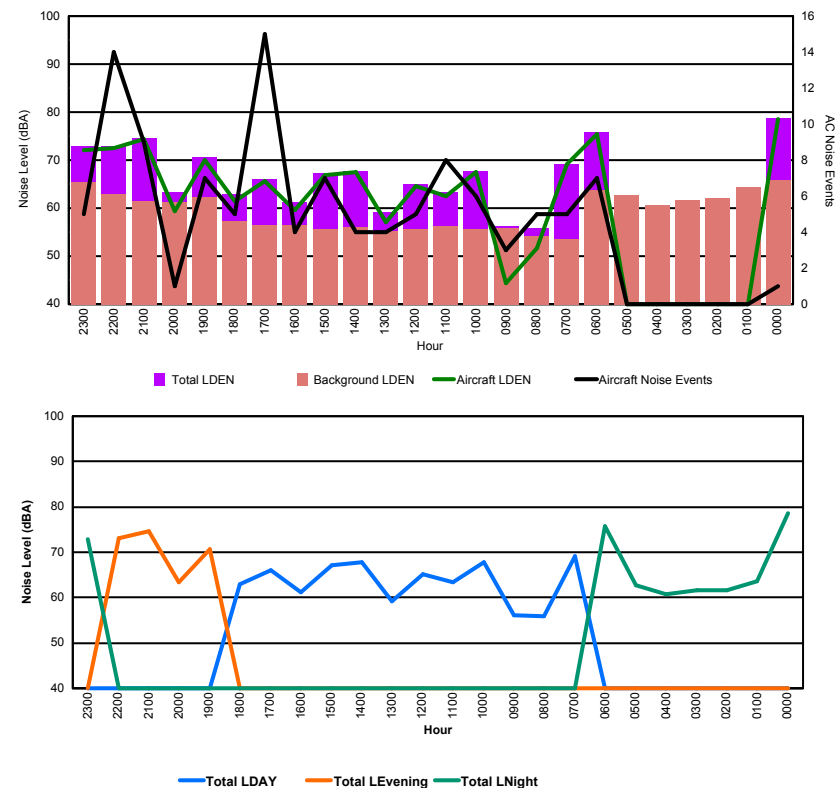


Luxembourg Airport Noise Distribution by Hour

Between 17/04/2016 00:00:00 and 17/04/2016 23:59:59 (Local Time)

Day	Aircraft Events	Total LDEN dB (A)	Aircraft LDEN dB(A)	Background LDEN dB(A)	Total LDay dB(A)	Total LEvening dB(A)	Total LNight dB (A)
17/04/16 0:00	1	78.7	78.5	65.8	-	-	78.7
17/04/16 1:00	-	63.5	-	64.3	-	-	63.5
17/04/16 2:00	-	61.6	-	62.0	-	-	61.6
17/04/16 3:00	-	61.7	-	61.7	-	-	61.7
17/04/16 4:00	-	60.7	-	60.7	-	-	60.7
17/04/16 5:00	-	62.7	-	62.7	-	-	62.7
17/04/16 6:00	7	75.8	75.5	63.7	-	-	75.8
17/04/16 7:00	5	69.2	69.1	53.5	69.2	-	-
17/04/16 8:00	5	55.9	51.7	54.1	55.9	-	-
17/04/16 9:00	3	56.2	44.4	55.9	56.2	-	-
17/04/16 10:00	6	67.7	67.4	55.6	67.7	-	-
17/04/16 11:00	8	63.4	62.5	56.3	63.4	-	-
17/04/16 12:00	5	65.1	64.6	55.6	65.1	-	-
17/04/16 13:00	4	59.2	57.1	55.2	59.2	-	-
17/04/16 14:00	4	67.8	67.5	56.0	67.8	-	-
17/04/16 15:00	7	67.2	66.9	55.6	67.2	-	-
17/04/16 16:00	4	61.2	59.5	56.4	61.2	-	-
17/04/16 17:00	15	66.1	65.7	56.5	66.1	-	-
17/04/16 18:00	5	62.9	61.5	57.2	62.9	-	-
17/04/16 19:00	7	70.6	70.0	62.2	-	70.6	-
17/04/16 20:00	1	63.4	59.3	61.2	-	63.4	-
17/04/16 21:00	9	74.6	74.3	61.5	-	74.6	-
17/04/16 22:00	14	73.0	72.6	63.0	-	73.0	-
17/04/16 23:00	5	72.9	72.1	65.5	-	-	72.9
	115	70.0	70.5	60.9	65.2	71.9	72.4

Location: NDB-Hamm NMT # 4





Luxembourg Airport Noise Distribution by Hour

Between 17/04/2016 00:00:00 and 17/04/2016 23:59:59 (Local Time)

Day	Aircraft Events	Total LDEN dB (A)	Aircraft LDEN dB(A)	Background LDEN dB(A)	Total LDay dB(A)	Total LEvening dB(A)	Total LNight dB (A)
17/04/16 0:00	2	72.0	69.5	71.0	-	-	72.0
17/04/16 1:00	-	68.3	-	70.3	-	-	68.3
17/04/16 2:00	-	66.6	-	68.1	-	-	66.6
17/04/16 3:00	-	65.6	-	65.8	-	-	65.6
17/04/16 4:00	-	64.7	-	64.8	-	-	64.7
17/04/16 5:00	-	65.9	-	66.1	-	-	65.9
17/04/16 6:00	8	71.2	69.2	67.9	-	-	71.2
17/04/16 7:00	4	63.3	61.7	59.5	63.3	-	-
17/04/16 8:00	3	58.0	48.1	57.9	58.0	-	-
17/04/16 9:00	-	59.6	-	59.7	59.6	-	-
17/04/16 10:00	5	62.1	59.7	58.6	62.1	-	-
17/04/16 11:00	7	60.7	55.9	59.2	60.7	-	-
17/04/16 12:00	4	61.1	57.6	58.6	61.1	-	-
17/04/16 13:00	5	58.8	50.9	58.1	58.8	-	-
17/04/16 14:00	5	62.0	59.5	58.6	62.0	-	-
17/04/16 15:00	6	62.2	59.5	58.9	62.2	-	-
17/04/16 16:00	3	60.7	53.3	59.9	60.7	-	-
17/04/16 17:00	14	61.9	58.8	59.2	61.9	-	-
17/04/16 18:00	7	60.9	56.6	59.1	60.9	-	-
17/04/16 19:00	7	66.7	63.5	64.1	-	66.7	-
17/04/16 20:00	1	63.3	52.3	63.0	-	63.3	-
17/04/16 21:00	9	67.0	65.0	62.9	-	67.0	-
17/04/16 22:00	13	66.8	65.0	62.5	-	66.8	-
17/04/16 23:00	5	69.5	63.7	68.3	-	-	69.5
	108	65.8	62.9	64.7	61.2	66.2	68.7

Location: Gare centrale NMT # 5

