

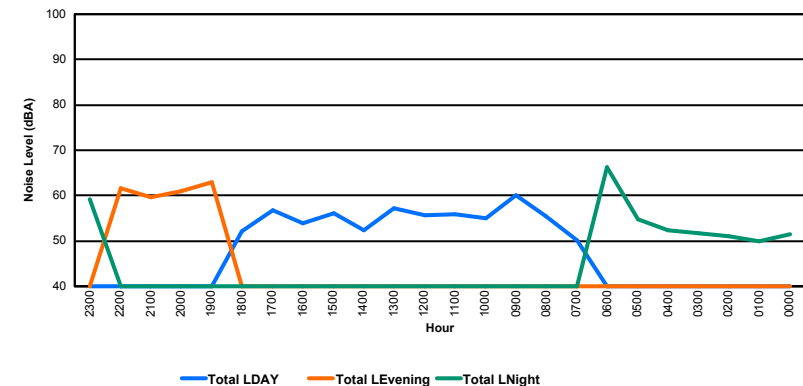
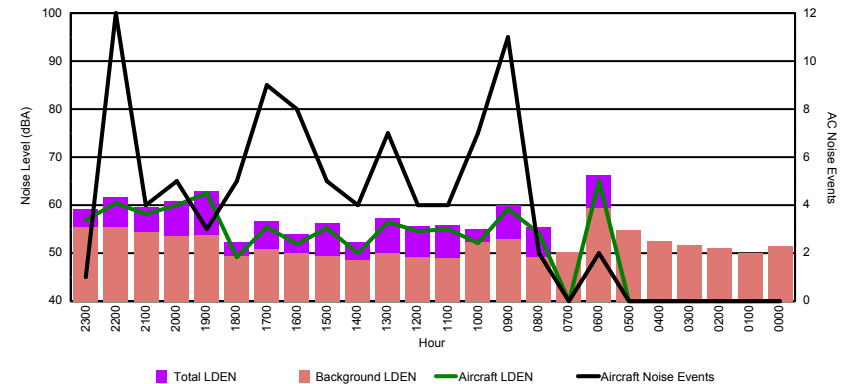


## Luxembourg Airport Noise Distribution by Hour

Between 08/04/2016 00:00:00 and 08/04/2016 23:59:59 (Local Time)

Day	Aircraft Events	Total LDEN dB (A)	Aircraft LDEN dB(A)	Background LDEN dB(A)	Total LDay dB(A)	Total LEvening dB(A)	Total LNight dB (A)
08/04/16 0:00	-	51.4	-	51.4	-	-	51.4
08/04/16 1:00	-	50.0	-	50.0	-	-	50.0
08/04/16 2:00	-	51.1	-	51.1	-	-	51.1
08/04/16 3:00	-	51.7	-	51.7	-	-	51.7
08/04/16 4:00	-	52.4	-	52.4	-	-	52.4
08/04/16 5:00	-	54.7	-	54.7	-	-	54.7
08/04/16 6:00	2	66.2	65.1	59.3	-	-	66.2
08/04/16 7:00	-	50.2	-	50.2	50.2	-	-
08/04/16 8:00	2	55.4	54.2	49.2	55.4	-	-
08/04/16 9:00	11	60.1	59.2	52.9	60.1	-	-
08/04/16 10:00	7	55.0	52.0	52.2	55.0	-	-
08/04/16 11:00	4	55.9	55.0	48.9	55.9	-	-
08/04/16 12:00	4	55.6	54.5	49.1	55.6	-	-
08/04/16 13:00	7	57.3	56.5	50.0	57.3	-	-
08/04/16 14:00	4	52.3	50.0	48.5	52.3	-	-
08/04/16 15:00	5	56.2	55.3	49.3	56.2	-	-
08/04/16 16:00	8	53.9	51.9	49.9	53.9	-	-
08/04/16 17:00	9	56.7	55.5	50.9	56.7	-	-
08/04/16 18:00	5	52.2	49.2	49.4	52.2	-	-
08/04/16 19:00	3	63.0	62.4	53.8	-	63.0	-
08/04/16 20:00	5	60.9	60.1	53.5	-	60.9	-
08/04/16 21:00	4	59.6	58.2	54.4	-	59.6	-
08/04/16 22:00	12	61.6	60.5	55.4	-	61.6	-
08/04/16 23:00	1	59.2	56.8	55.5	-	-	59.2
	<b>93</b>	<b>58.3</b>	<b>58.3</b>	<b>52.8</b>	<b>55.8</b>	<b>61.4</b>	<b>58.7</b>

Location: Roodt/Syr NMT # 1



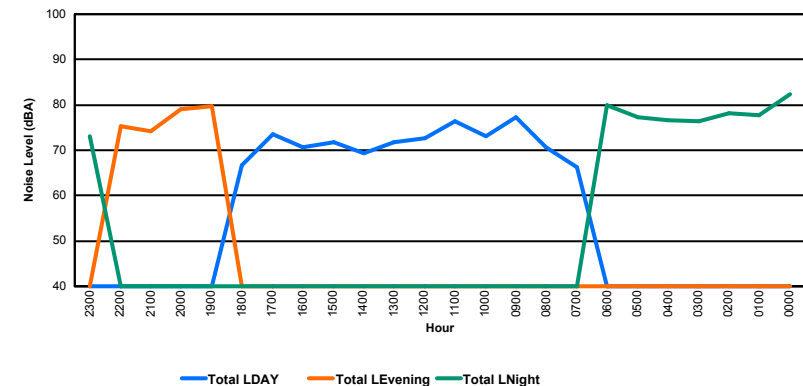
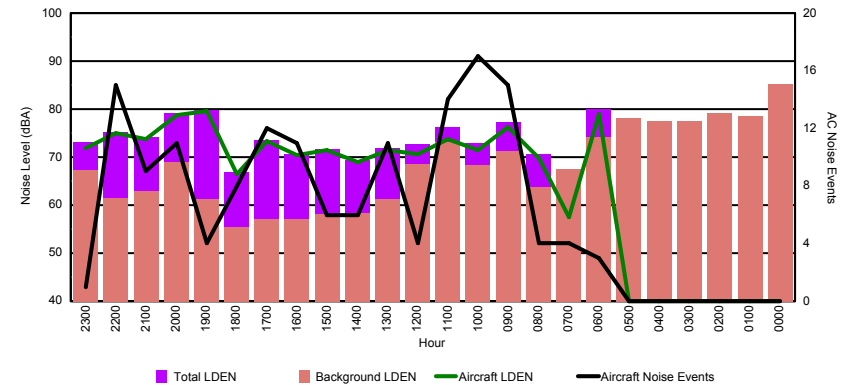


## Luxembourg Airport Noise Distribution by Hour

Between 08/04/2016 00:00:00 and 08/04/2016 23:59:59 (Local Time)

Day	Aircraft Events	Total LDEN dB (A)	Aircraft LDEN dB(A)	Background LDEN dB(A)	Total LDay dB(A)	Total LEvening dB(A)	Total LNight dB (A)
08/04/16 0:00	-	82.3	-	85.3	-	-	82.3
08/04/16 1:00	-	77.8	-	78.6	-	-	77.8
08/04/16 2:00	-	78.1	-	79.2	-	-	78.1
08/04/16 3:00	-	76.3	-	77.4	-	-	76.3
08/04/16 4:00	-	76.7	-	77.5	-	-	76.7
08/04/16 5:00	-	77.2	-	78.1	-	-	77.2
08/04/16 6:00	3	79.9	78.9	74.1	-	-	79.9
08/04/16 7:00	4	66.3	57.4	67.4	66.3	-	-
08/04/16 8:00	4	70.6	69.8	63.7	70.6	-	-
08/04/16 9:00	15	77.3	76.3	71.3	77.3	-	-
08/04/16 10:00	17	73.0	71.5	68.4	73.0	-	-
08/04/16 11:00	14	76.3	73.8	73.2	76.3	-	-
08/04/16 12:00	4	72.7	70.6	68.6	72.7	-	-
08/04/16 13:00	11	71.8	71.4	61.2	71.8	-	-
08/04/16 14:00	6	69.3	69.0	58.4	69.3	-	-
08/04/16 15:00	6	71.7	71.5	58.1	71.7	-	-
08/04/16 16:00	11	70.6	70.5	57.0	70.6	-	-
08/04/16 17:00	12	73.5	73.4	57.1	73.5	-	-
08/04/16 18:00	8	66.8	66.5	55.4	66.8	-	-
08/04/16 19:00	4	79.7	79.6	61.2	-	79.7	-
08/04/16 20:00	11	79.1	78.7	68.9	-	79.1	-
08/04/16 21:00	9	74.1	73.8	62.9	-	74.1	-
08/04/16 22:00	15	75.2	75.0	61.5	-	75.2	-
08/04/16 23:00	1	73.1	71.8	67.3	-	-	73.1
	<b>155</b>	<b>76.3</b>	<b>74.3</b>	<b>75.1</b>	<b>72.8</b>	<b>77.7</b>	<b>78.4</b>

Location: DVOR NMT # 2



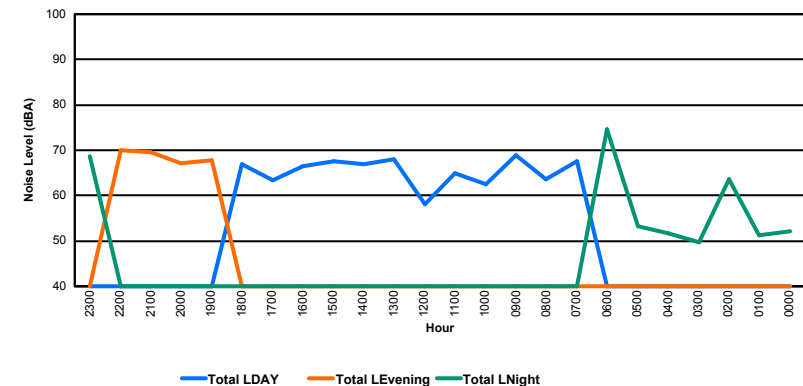
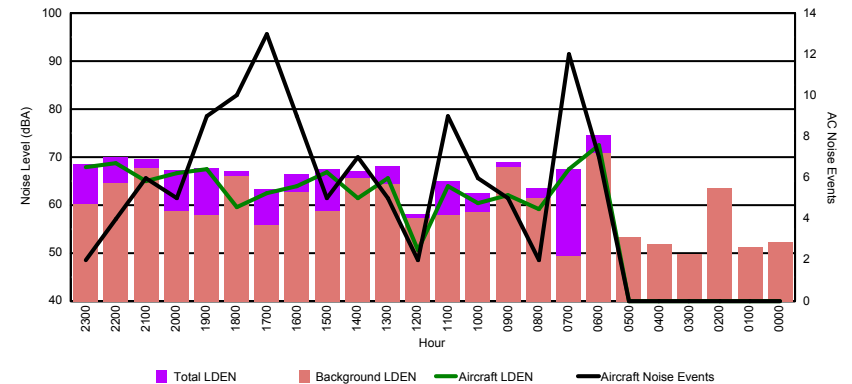


## Luxembourg Airport Noise Distribution by Hour

Between 08/04/2016 00:00:00 and 08/04/2016 23:59:59 (Local Time)

Day	Aircraft Events	Total LDEN dB (A)	Aircraft LDEN dB(A)	Background LDEN dB(A)	Total LDay dB(A)	Total LEvening dB(A)	Total LNight dB (A)
08/04/16 0:00	-	52.2	-	52.2	-	-	52.2
08/04/16 1:00	-	51.2	-	51.2	-	-	51.2
08/04/16 2:00	-	63.6	-	63.5	-	-	63.6
08/04/16 3:00	-	49.8	-	49.8	-	-	49.8
08/04/16 4:00	-	51.8	-	51.8	-	-	51.8
08/04/16 5:00	-	53.3	-	53.3	-	-	53.3
08/04/16 6:00	7	74.6	72.4	70.8	-	-	74.6
08/04/16 7:00	12	67.5	67.5	49.3	67.5	-	-
08/04/16 8:00	2	63.5	59.2	61.5	63.5	-	-
08/04/16 9:00	5	68.9	62.0	67.9	68.9	-	-
08/04/16 10:00	6	62.6	60.5	58.5	62.6	-	-
08/04/16 11:00	9	64.9	64.0	57.9	64.9	-	-
08/04/16 12:00	2	58.1	50.7	57.3	58.1	-	-
08/04/16 13:00	5	68.1	65.7	64.4	68.1	-	-
08/04/16 14:00	7	67.0	61.5	65.6	67.0	-	-
08/04/16 15:00	5	67.6	66.9	58.8	67.6	-	-
08/04/16 16:00	9	66.4	64.0	62.8	66.4	-	-
08/04/16 17:00	13	63.3	62.5	55.9	63.3	-	-
08/04/16 18:00	10	67.0	59.6	66.1	67.0	-	-
08/04/16 19:00	9	67.8	67.4	58.0	-	67.8	-
08/04/16 20:00	5	67.2	66.6	58.8	-	67.2	-
08/04/16 21:00	6	69.6	65.1	67.8	-	69.6	-
08/04/16 22:00	4	70.1	68.7	64.5	-	70.1	-
08/04/16 23:00	2	68.6	67.9	60.2	-	-	68.6
	<b>118</b>	<b>67.0</b>	<b>66.0</b>	<b>63.1</b>	<b>66.2</b>	<b>68.8</b>	<b>66.9</b>

Location: Mid Runway NMT # 3



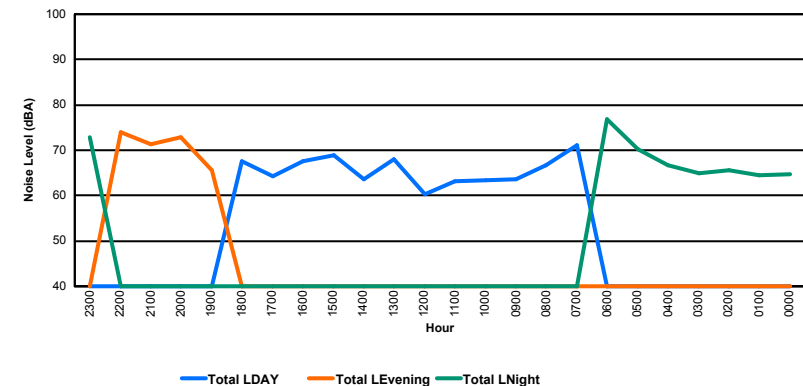
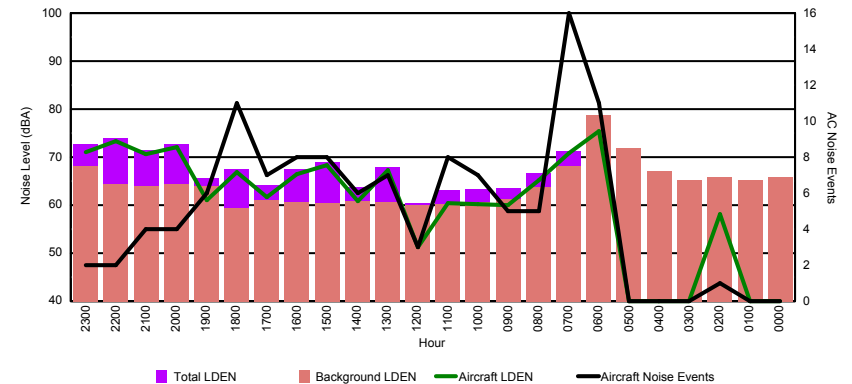


## Luxembourg Airport Noise Distribution by Hour

Between 08/04/2016 00:00:00 and 08/04/2016 23:59:59 (Local Time)

Day	Aircraft Events	Total LDEN dB (A)	Aircraft LDEN dB(A)	Background LDEN dB(A)	Total LDay dB(A)	Total LEvening dB(A)	Total LNight dB (A)
08/04/16 0:00	-	64.7	-	65.8	-	-	64.7
08/04/16 1:00	-	64.4	-	65.3	-	-	64.4
08/04/16 2:00	1	65.7	58.1	65.8	-	-	65.7
08/04/16 3:00	-	65.0	-	65.2	-	-	65.0
08/04/16 4:00	-	66.6	-	67.1	-	-	66.6
08/04/16 5:00	-	70.2	-	71.8	-	-	70.2
08/04/16 6:00	11	76.9	75.5	78.8	-	-	76.9
08/04/16 7:00	16	71.2	70.8	68.2	71.2	-	-
08/04/16 8:00	5	66.6	65.2	63.7	66.6	-	-
08/04/16 9:00	5	63.6	59.9	61.3	63.6	-	-
08/04/16 10:00	7	63.3	60.3	60.6	63.3	-	-
08/04/16 11:00	8	63.2	60.4	60.2	63.2	-	-
08/04/16 12:00	3	60.4	51.3	59.9	60.4	-	-
08/04/16 13:00	7	68.0	67.2	60.6	68.0	-	-
08/04/16 14:00	6	63.7	60.8	60.9	63.7	-	-
08/04/16 15:00	8	69.0	68.4	60.5	69.0	-	-
08/04/16 16:00	8	67.5	66.5	60.6	67.5	-	-
08/04/16 17:00	7	64.2	61.7	61.1	64.2	-	-
08/04/16 18:00	11	67.6	66.9	59.4	67.6	-	-
08/04/16 19:00	6	65.7	61.1	64.0	-	65.7	-
08/04/16 20:00	4	72.8	72.1	64.4	-	72.8	-
08/04/16 21:00	4	71.4	70.6	64.0	-	71.4	-
08/04/16 22:00	2	73.9	73.4	64.3	-	73.9	-
08/04/16 23:00	2	72.8	71.0	68.2	-	-	72.8
	121	69.5	68.7	67.9	66.7	71.8	70.8

Location: NDB-Hamm NMT # 4



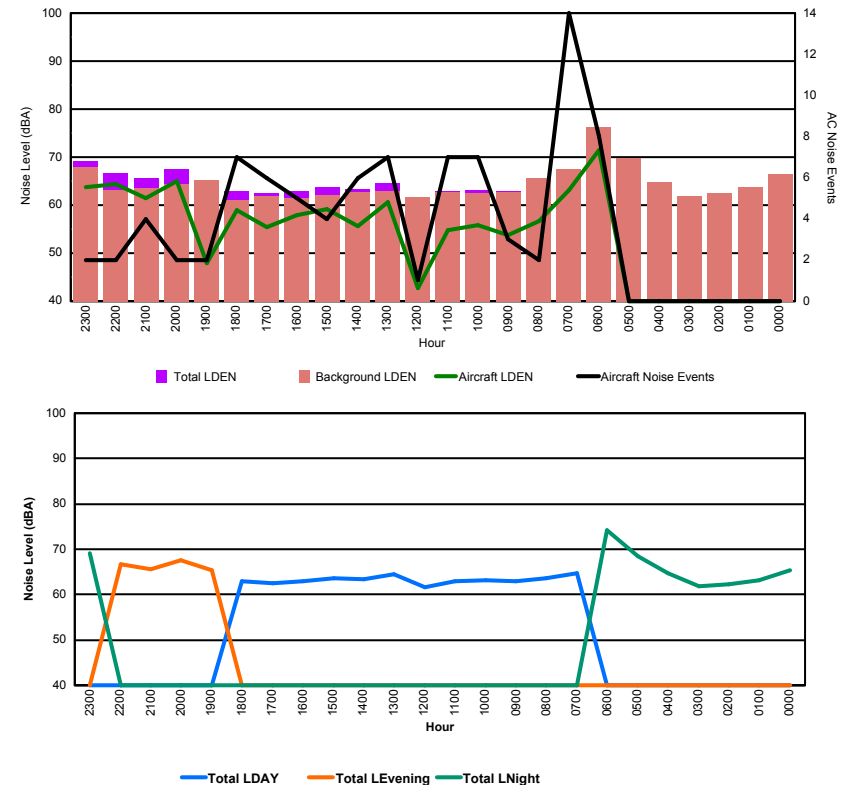


## Luxembourg Airport Noise Distribution by Hour

Between 08/04/2016 00:00:00 and 08/04/2016 23:59:59 (Local Time)

Day	Aircraft Events	Total LDEN dB (A)	Aircraft LDEN dB(A)	Background LDEN dB(A)	Total LDay dB(A)	Total LEvening dB(A)	Total LNight dB (A)
08/04/16 0:00	-	65.3	-	66.5	-	-	65.3
08/04/16 1:00	-	63.2	-	63.8	-	-	63.2
08/04/16 2:00	-	62.2	-	62.4	-	-	62.2
08/04/16 3:00	-	61.9	-	61.9	-	-	61.9
08/04/16 4:00	-	64.7	-	64.7	-	-	64.7
08/04/16 5:00	-	68.5	-	69.8	-	-	68.5
08/04/16 6:00	8	74.2	71.4	76.2	-	-	74.2
08/04/16 7:00	14	64.8	63.2	67.6	64.8	-	-
08/04/16 8:00	2	63.7	56.7	65.6	63.7	-	-
08/04/16 9:00	3	62.9	53.8	62.7	62.9	-	-
08/04/16 10:00	7	63.1	55.8	62.6	63.1	-	-
08/04/16 11:00	7	63.0	54.8	62.7	63.0	-	-
08/04/16 12:00	1	61.6	42.7	61.6	61.6	-	-
08/04/16 13:00	7	64.6	60.6	62.9	64.6	-	-
08/04/16 14:00	6	63.3	55.6	62.7	63.3	-	-
08/04/16 15:00	4	63.7	59.2	62.1	63.7	-	-
08/04/16 16:00	5	63.0	58.0	61.5	63.0	-	-
08/04/16 17:00	6	62.5	55.5	61.8	62.5	-	-
08/04/16 18:00	7	62.9	58.9	61.0	62.9	-	-
08/04/16 19:00	2	65.3	47.9	65.3	-	65.3	-
08/04/16 20:00	2	67.6	64.9	64.3	-	67.6	-
08/04/16 21:00	4	65.6	61.5	63.5	-	65.6	-
08/04/16 22:00	2	66.7	64.3	63.2	-	66.7	-
08/04/16 23:00	2	69.2	63.7	67.9	-	-	69.2
	<b>89</b>	<b>66.1</b>	<b>62.4</b>	<b>66.5</b>	<b>63.3</b>	<b>66.4</b>	<b>68.2</b>

Location: Gare centrale NMT # 5



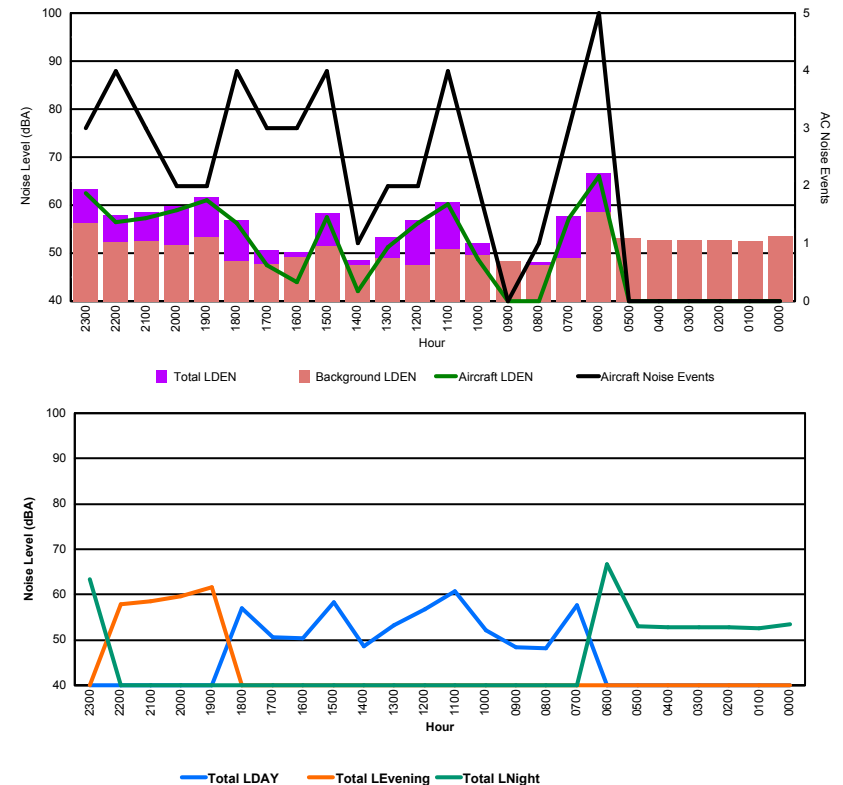


## Luxembourg Airport Noise Distribution by Hour

Between 09/04/2016 00:00:00 and 09/04/2016 23:59:59 (Local Time)

Day	Aircraft Events	Total LDEN dB (A)	Aircraft LDEN dB(A)	Background LDEN dB(A)	Total LDay dB(A)	Total LEvening dB(A)	Total LNight dB (A)
09/04/16 0:00	-	53.5	-	53.6	-	-	53.5
09/04/16 1:00	-	52.6	-	52.6	-	-	52.6
09/04/16 2:00	-	52.7	-	52.7	-	-	52.7
09/04/16 3:00	-	52.8	-	52.8	-	-	52.8
09/04/16 4:00	-	52.8	-	52.8	-	-	52.8
09/04/16 5:00	-	53.1	-	53.1	-	-	53.1
09/04/16 6:00	5	66.7	66.0	58.6	-	-	66.7
09/04/16 7:00	3	57.7	57.2	49.0	57.7	-	-
09/04/16 8:00	1	48.2	39.7	47.6	48.2	-	-
09/04/16 9:00	-	48.3	-	48.3	48.3	-	-
09/04/16 10:00	2	52.1	48.8	49.5	52.1	-	-
09/04/16 11:00	4	60.7	60.3	50.9	60.7	-	-
09/04/16 12:00	2	56.8	56.2	47.4	56.8	-	-
09/04/16 13:00	2	53.3	51.3	48.9	53.3	-	-
09/04/16 14:00	1	48.6	42.1	47.5	48.6	-	-
09/04/16 15:00	4	58.4	57.5	51.4	58.4	-	-
09/04/16 16:00	3	50.3	44.0	49.2	50.3	-	-
09/04/16 17:00	3	50.6	47.5	47.8	50.6	-	-
09/04/16 18:00	4	56.9	56.3	48.4	56.9	-	-
09/04/16 19:00	2	61.6	61.0	53.3	-	61.6	-
09/04/16 20:00	2	59.7	59.0	51.7	-	59.7	-
09/04/16 21:00	3	58.5	57.3	52.4	-	58.5	-
09/04/16 22:00	4	57.9	56.5	52.3	-	57.9	-
09/04/16 23:00	3	63.3	62.4	56.2	-	-	63.3
	<b>48</b>	<b>58.2</b>	<b>58.5</b>	<b>52.2</b>	<b>55.5</b>	<b>59.7</b>	<b>60.0</b>

Location: Roodt/Syr NMT # 1



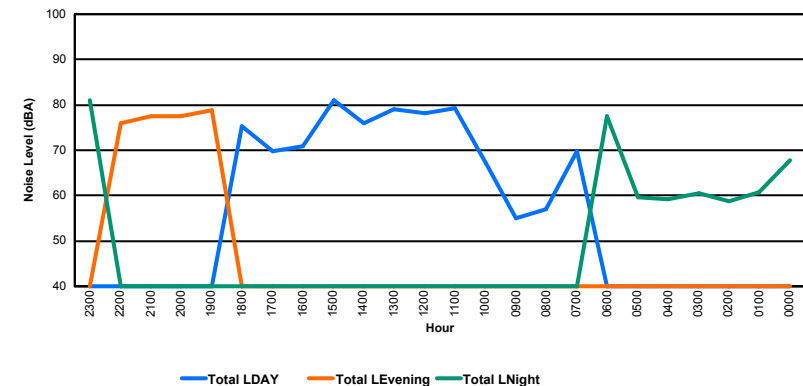
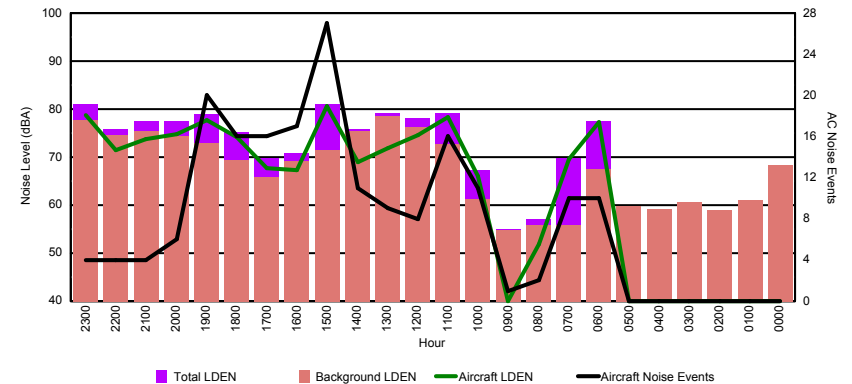


## Luxembourg Airport Noise Distribution by Hour

Between 09/04/2016 00:00:00 and 09/04/2016 23:59:59 (Local Time)

Day	Aircraft Events	Total LDEN dB (A)	Aircraft LDEN dB(A)	Background LDEN dB(A)	Total LDay dB(A)	Total LEvening dB(A)	Total LNight dB (A)
09/04/16 0:00	-	67.9	-	68.3	-	-	67.9
09/04/16 1:00	-	60.8	-	61.1	-	-	60.8
09/04/16 2:00	-	58.8	-	58.9	-	-	58.8
09/04/16 3:00	-	60.5	-	60.6	-	-	60.5
09/04/16 4:00	-	59.2	-	59.2	-	-	59.2
09/04/16 5:00	-	59.7	-	59.7	-	-	59.7
09/04/16 6:00	10	77.5	77.2	67.6	-	-	77.5
09/04/16 7:00	10	69.8	69.6	55.8	69.8	-	-
09/04/16 8:00	2	57.0	51.8	55.8	57.0	-	-
09/04/16 9:00	1	54.9	39.2	54.8	54.9	-	-
09/04/16 10:00	11	67.2	66.1	61.2	67.2	-	-
09/04/16 11:00	16	79.2	78.3	72.7	79.2	-	-
09/04/16 12:00	8	78.2	74.5	76.2	78.2	-	-
09/04/16 13:00	9	79.1	71.8	78.6	79.1	-	-
09/04/16 14:00	11	75.9	69.0	75.4	75.9	-	-
09/04/16 15:00	27	81.0	80.7	71.5	81.0	-	-
09/04/16 16:00	17	70.9	67.2	69.2	70.9	-	-
09/04/16 17:00	16	69.7	67.7	65.8	69.7	-	-
09/04/16 18:00	16	75.3	74.2	69.4	75.3	-	-
09/04/16 19:00	20	78.9	77.8	73.0	-	78.9	-
09/04/16 20:00	6	77.4	74.7	74.4	-	77.4	-
09/04/16 21:00	4	77.4	73.8	75.4	-	77.4	-
09/04/16 22:00	4	75.9	71.4	74.5	-	75.9	-
09/04/16 23:00	4	81.0	78.7	77.7	-	-	81.0
	<b>192</b>	<b>75.7</b>	<b>74.8</b>	<b>72.1</b>	<b>75.9</b>	<b>77.5</b>	<b>73.8</b>

Location: DVOR NMT # 2



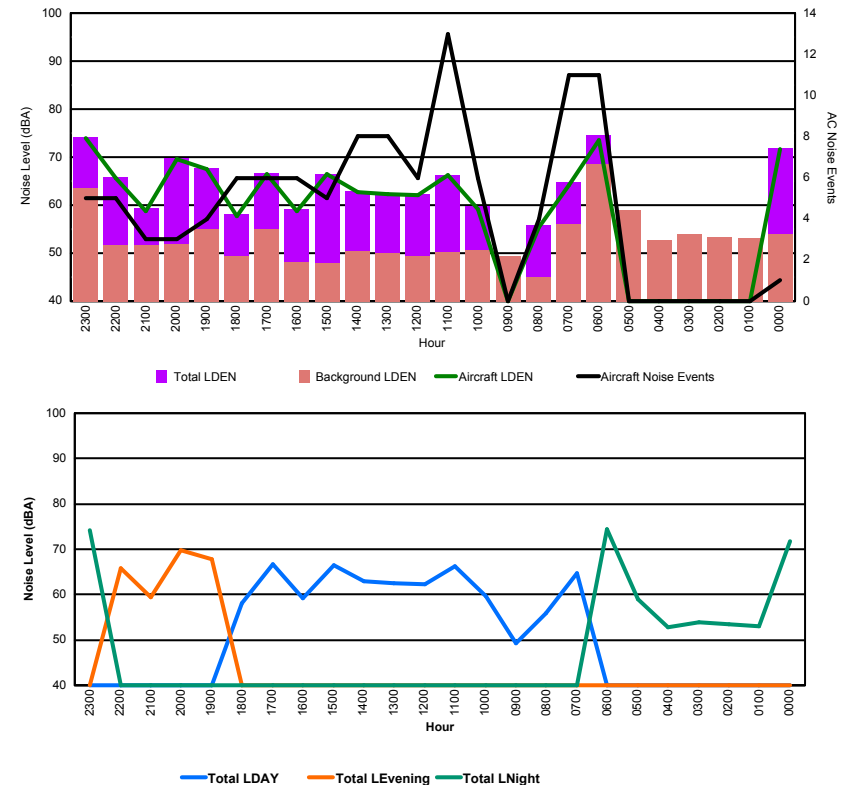


## Luxembourg Airport Noise Distribution by Hour

Between 09/04/2016 00:00:00 and 09/04/2016 23:59:59 (Local Time)

Day	Aircraft Events	Total LDEN dB (A)	Aircraft LDEN dB(A)	Background LDEN dB(A)	Total LDay dB(A)	Total LEvening dB(A)	Total LNight dB (A)
09/04/16 0:00	1	71.8	71.7	54.0	-	-	71.8
09/04/16 1:00	-	53.0	-	53.1	-	-	53.0
09/04/16 2:00	-	53.4	-	53.4	-	-	53.4
09/04/16 3:00	-	54.0	-	54.0	-	-	54.0
09/04/16 4:00	-	52.8	-	52.8	-	-	52.8
09/04/16 5:00	-	58.9	-	58.9	-	-	58.9
09/04/16 6:00	11	74.5	73.5	68.6	-	-	74.5
09/04/16 7:00	11	64.7	64.2	56.0	64.7	-	-
09/04/16 8:00	4	55.8	55.4	44.9	55.8	-	-
09/04/16 9:00	-	49.2	-	49.3	49.2	-	-
09/04/16 10:00	6	59.7	59.2	50.6	59.7	-	-
09/04/16 11:00	13	66.3	66.2	50.3	66.3	-	-
09/04/16 12:00	6	62.3	62.1	49.4	62.3	-	-
09/04/16 13:00	8	62.5	62.3	50.1	62.5	-	-
09/04/16 14:00	8	62.9	62.7	50.4	62.9	-	-
09/04/16 15:00	5	66.4	66.4	48.0	66.4	-	-
09/04/16 16:00	6	59.2	58.8	48.2	59.2	-	-
09/04/16 17:00	6	66.7	66.4	55.1	66.7	-	-
09/04/16 18:00	6	58.2	57.7	49.3	58.2	-	-
09/04/16 19:00	4	67.8	67.6	55.1	-	67.8	-
09/04/16 20:00	3	69.7	69.6	51.8	-	69.7	-
09/04/16 21:00	3	59.4	58.7	51.7	-	59.4	-
09/04/16 22:00	5	65.8	65.7	51.7	-	65.8	-
09/04/16 23:00	5	74.2	73.9	63.6	-	-	74.2
	<b>111</b>	<b>66.8</b>	<b>67.6</b>	<b>57.6</b>	<b>63.1</b>	<b>67.0</b>	<b>69.5</b>

Location: Mid Runway NMT # 3



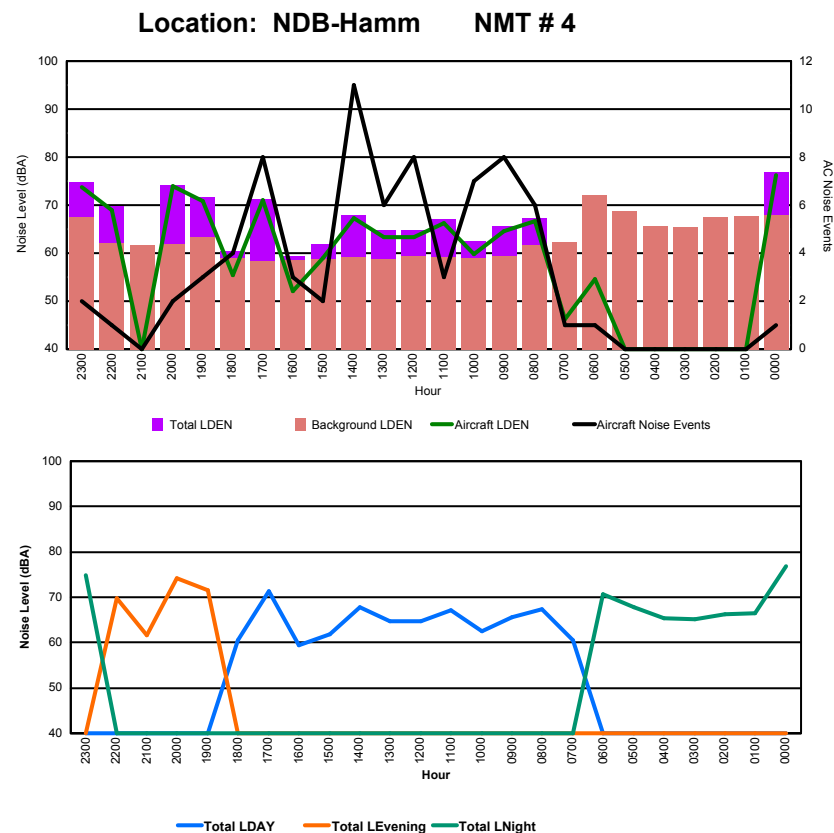




## Luxembourg Airport Noise Distribution by Hour

Between 09/04/2016 00:00:00 and 09/04/2016 23:59:59 (Local Time)

Day	Aircraft Events	Total LDEN dB (A)	Aircraft LDEN dB(A)	Background LDEN dB(A)	Total LDay dB(A)	Total LEvening dB(A)	Total LNight dB (A)
09/04/16 0:00	1	76.8	76.3	68.0	-	-	76.8
09/04/16 1:00	-	66.5	-	67.8	-	-	66.5
09/04/16 2:00	-	66.3	-	67.4	-	-	66.3
09/04/16 3:00	-	65.2	-	65.5	-	-	65.2
09/04/16 4:00	-	65.4	-	65.7	-	-	65.4
09/04/16 5:00	-	67.7	-	68.7	-	-	67.7
09/04/16 6:00	1	70.6	54.6	72.0	-	-	70.6
09/04/16 7:00	1	60.6	46.3	62.3	60.6	-	-
09/04/16 8:00	6	67.3	66.6	61.7	67.3	-	-
09/04/16 9:00	8	65.6	64.5	59.4	65.6	-	-
09/04/16 10:00	7	62.4	59.8	59.0	62.4	-	-
09/04/16 11:00	3	67.1	66.3	59.2	67.1	-	-
09/04/16 12:00	8	64.7	63.4	59.3	64.7	-	-
09/04/16 13:00	6	64.7	63.4	58.7	64.7	-	-
09/04/16 14:00	11	67.9	67.3	59.1	67.9	-	-
09/04/16 15:00	2	61.9	59.0	58.8	61.9	-	-
09/04/16 16:00	3	59.4	52.0	58.6	59.4	-	-
09/04/16 17:00	8	71.3	71.1	58.4	71.3	-	-
09/04/16 18:00	4	60.5	55.5	59.0	60.5	-	-
09/04/16 19:00	3	71.6	70.9	63.4	-	71.6	-
09/04/16 20:00	2	74.2	74.0	61.9	-	74.2	-
09/04/16 21:00	-	61.6	-	61.6	-	61.6	-
09/04/16 22:00	1	69.8	69.0	62.1	-	69.8	-
09/04/16 23:00	2	74.8	73.8	67.5	-	-	74.8
	<b>77</b>	<b>69.4</b>	<b>69.2</b>	<b>64.8</b>	<b>65.8</b>	<b>71.1</b>	<b>71.4</b>



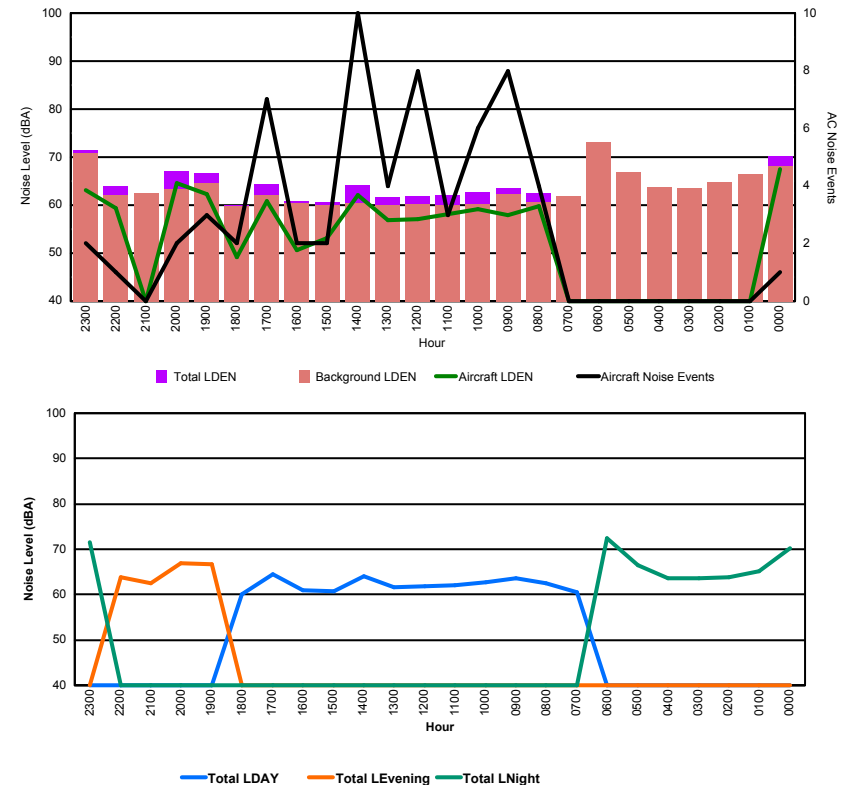


## Luxembourg Airport Noise Distribution by Hour

Between 09/04/2016 00:00:00 and 09/04/2016 23:59:59 (Local Time)

Day	Aircraft Events	Total LDEN dB (A)	Aircraft LDEN dB(A)	Background LDEN dB(A)	Total LDay dB(A)	Total LEvening dB(A)	Total LNight dB (A)
09/04/16 0:00	1	70.2	67.5	68.2	-	-	70.2
09/04/16 1:00	-	65.1	-	66.4	-	-	65.1
09/04/16 2:00	-	63.8	-	64.8	-	-	63.8
09/04/16 3:00	-	63.5	-	63.6	-	-	63.5
09/04/16 4:00	-	63.6	-	63.7	-	-	63.6
09/04/16 5:00	-	66.4	-	66.9	-	-	66.4
09/04/16 6:00	-	72.4	-	73.2	-	-	72.4
09/04/16 7:00	-	60.6	-	61.9	60.6	-	-
09/04/16 8:00	4	62.5	59.8	60.7	62.5	-	-
09/04/16 9:00	8	63.5	57.9	62.3	63.5	-	-
09/04/16 10:00	6	62.7	59.2	60.3	62.7	-	-
09/04/16 11:00	3	62.1	58.2	59.9	62.1	-	-
09/04/16 12:00	8	61.8	57.0	60.2	61.8	-	-
09/04/16 13:00	4	61.7	56.8	60.0	61.7	-	-
09/04/16 14:00	10	64.1	62.0	60.4	64.1	-	-
09/04/16 15:00	2	60.7	53.2	60.0	60.7	-	-
09/04/16 16:00	2	60.9	50.7	60.5	60.9	-	-
09/04/16 17:00	7	64.4	60.9	62.0	64.4	-	-
09/04/16 18:00	2	60.0	49.2	59.7	60.0	-	-
09/04/16 19:00	3	66.6	62.3	64.6	-	66.6	-
09/04/16 20:00	2	67.0	64.6	63.3	-	67.0	-
09/04/16 21:00	-	62.6	-	62.6	-	62.6	-
09/04/16 22:00	1	63.9	59.3	62.1	-	63.9	-
09/04/16 23:00	2	71.5	63.2	70.9	-	-	71.5
	<b>65</b>	<b>65.8</b>	<b>61.1</b>	<b>65.2</b>	<b>62.3</b>	<b>65.4</b>	<b>68.5</b>

Location: Gare centrale NMT # 5



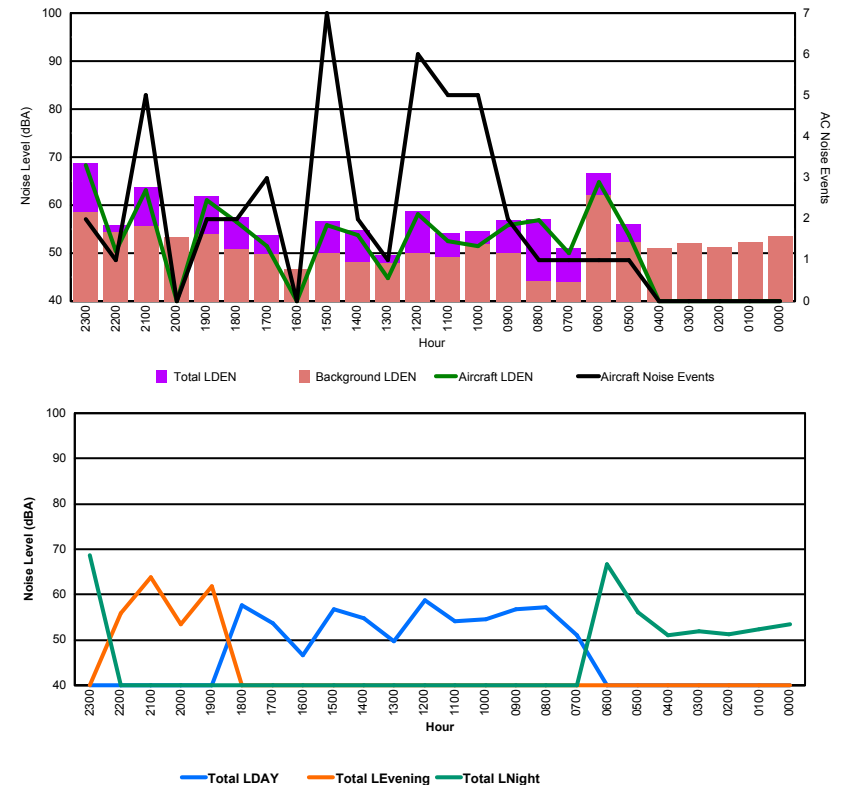


## Luxembourg Airport Noise Distribution by Hour

Between 10/04/2016 00:00:00 and 10/04/2016 23:59:59 (Local Time)

Day	Aircraft Events	Total LDEN dB (A)	Aircraft LDEN dB(A)	Background LDEN dB(A)	Total LDay dB(A)	Total LEvening dB(A)	Total LNight dB (A)
10/04/16 0:00	-	53.5	-	53.5	-	-	53.5
10/04/16 1:00	-	52.3	-	52.3	-	-	52.3
10/04/16 2:00	-	51.2	-	51.2	-	-	51.2
10/04/16 3:00	-	52.0	-	52.0	-	-	52.0
10/04/16 4:00	-	51.0	-	51.0	-	-	51.0
10/04/16 5:00	1	56.1	53.8	52.3	-	-	56.1
10/04/16 6:00	1	66.6	64.7	62.1	-	-	66.6
10/04/16 7:00	1	51.1	50.1	44.0	51.1	-	-
10/04/16 8:00	1	57.1	56.9	44.1	57.1	-	-
10/04/16 9:00	2	56.8	55.8	49.9	56.8	-	-
10/04/16 10:00	5	54.6	51.4	51.8	54.6	-	-
10/04/16 11:00	5	54.1	52.6	49.2	54.1	-	-
10/04/16 12:00	6	58.8	58.2	50.1	58.8	-	-
10/04/16 13:00	1	49.6	44.7	47.9	49.6	-	-
10/04/16 14:00	2	54.7	53.7	48.1	54.7	-	-
10/04/16 15:00	7	56.7	55.8	49.9	56.7	-	-
10/04/16 16:00	-	46.6	-	46.6	46.6	-	-
10/04/16 17:00	3	53.7	51.5	49.8	53.7	-	-
10/04/16 18:00	2	57.6	56.5	50.9	57.6	-	-
10/04/16 19:00	2	61.8	61.1	53.9	-	61.8	-
10/04/16 20:00	-	53.4	-	53.4	-	53.4	-
10/04/16 21:00	5	63.8	63.1	55.7	-	63.8	-
10/04/16 22:00	1	55.8	50.4	54.3	-	55.8	-
10/04/16 23:00	2	68.7	68.3	58.6	-	-	68.7
	<b>47</b>	<b>59.6</b>	<b>59.9</b>	<b>53.5</b>	<b>55.4</b>	<b>60.5</b>	<b>62.2</b>

Location: Roodt/Syr NMT # 1



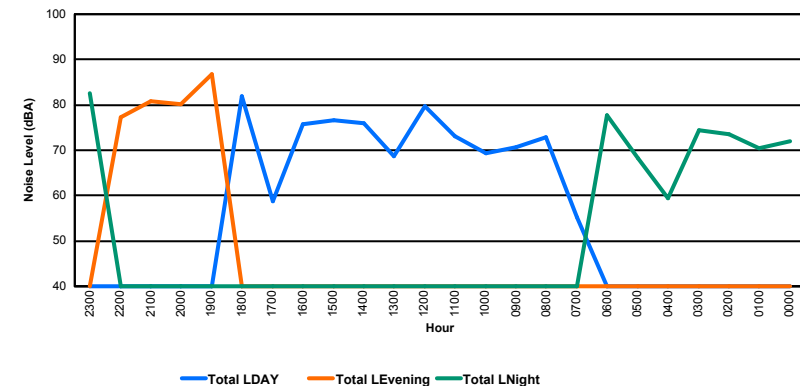
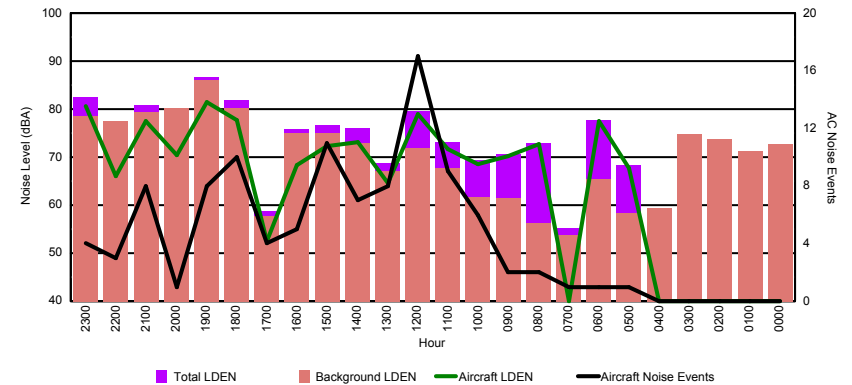


## Luxembourg Airport Noise Distribution by Hour

Between 10/04/2016 00:00:00 and 10/04/2016 23:59:59 (Local Time)

Day	Aircraft Events	Total LDEN dB (A)	Aircraft LDEN dB(A)	Background LDEN dB(A)	Total LDay dB(A)	Total LEvening dB(A)	Total LNight dB (A)
10/04/16 0:00	-	72.0	-	72.7	-	-	72.0
10/04/16 1:00	-	70.5	-	71.2	-	-	70.5
10/04/16 2:00	-	73.5	-	73.8	-	-	73.5
10/04/16 3:00	-	74.5	-	74.8	-	-	74.5
10/04/16 4:00	-	59.4	-	59.4	-	-	59.4
10/04/16 5:00	1	68.3	67.8	58.3	-	-	68.3
10/04/16 6:00	1	77.8	77.5	65.4	-	-	77.8
10/04/16 7:00	1	55.3	36.4	53.8	55.3	-	-
10/04/16 8:00	2	72.9	72.8	56.3	72.9	-	-
10/04/16 9:00	2	70.7	70.2	61.4	70.7	-	-
10/04/16 10:00	6	69.3	68.5	61.6	69.3	-	-
10/04/16 11:00	9	73.1	71.7	67.8	73.1	-	-
10/04/16 12:00	17	79.6	78.9	71.9	79.6	-	-
10/04/16 13:00	8	68.7	64.6	67.0	68.7	-	-
10/04/16 14:00	7	76.0	73.2	72.9	76.0	-	-
10/04/16 15:00	11	76.7	72.2	75.0	76.7	-	-
10/04/16 16:00	5	75.8	68.3	75.1	75.8	-	-
10/04/16 17:00	4	58.8	52.5	57.7	58.8	-	-
10/04/16 18:00	10	81.9	77.8	80.3	81.9	-	-
10/04/16 19:00	8	86.7	81.4	86.1	-	86.7	-
10/04/16 20:00	1	80.1	70.4	80.3	-	80.1	-
10/04/16 21:00	8	80.9	77.6	79.4	-	80.9	-
10/04/16 22:00	3	77.2	66.0	77.6	-	77.2	-
10/04/16 23:00	4	82.6	80.7	78.5	-	-	82.6
	<b>108</b>	<b>78.0</b>	<b>75.2</b>	<b>76.4</b>	<b>75.6</b>	<b>82.7</b>	<b>76.1</b>

Location: DVOR NMT # 2



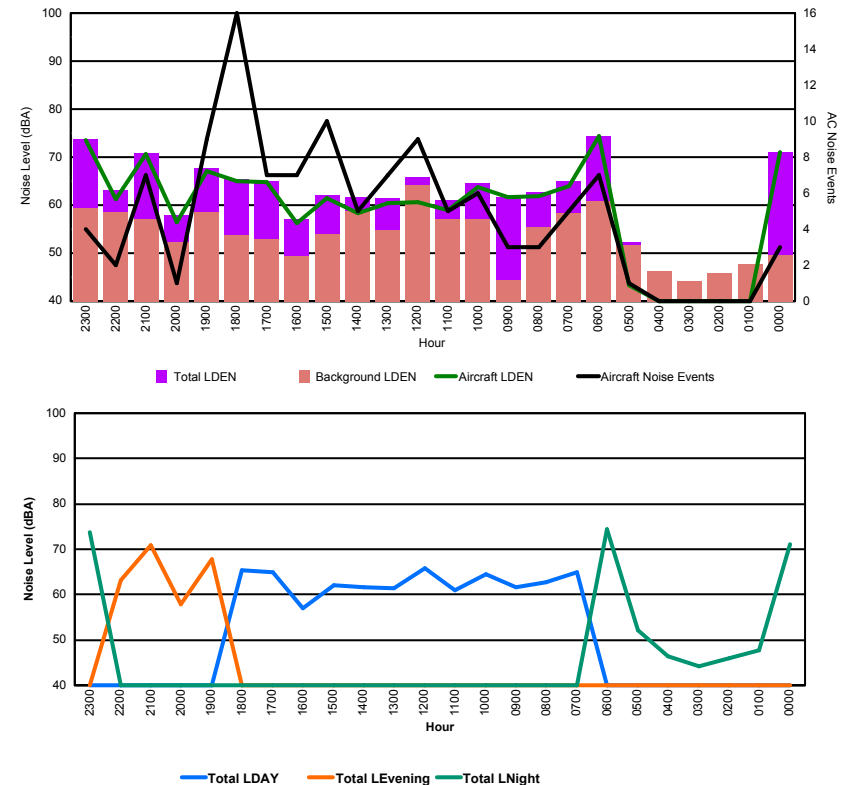


## Luxembourg Airport Noise Distribution by Hour

Between 10/04/2016 00:00:00 and 10/04/2016 23:59:59 (Local Time)

Day	Aircraft Events	Total LDEN dB (A)	Aircraft LDEN dB(A)	Background LDEN dB(A)	Total LDay dB(A)	Total LEvening dB(A)	Total LNight dB (A)
10/04/16 0:00	3	71.0	71.0	49.5	-	-	71.0
10/04/16 1:00	-	47.8	-	47.8	-	-	47.8
10/04/16 2:00	-	45.9	-	45.9	-	-	45.9
10/04/16 3:00	-	44.1	-	44.1	-	-	44.1
10/04/16 4:00	-	46.3	-	46.3	-	-	46.3
10/04/16 5:00	1	52.2	43.3	51.6	-	-	52.2
10/04/16 6:00	7	74.4	74.3	60.8	-	-	74.4
10/04/16 7:00	5	64.9	63.9	58.3	64.9	-	-
10/04/16 8:00	3	62.8	61.9	55.5	62.8	-	-
10/04/16 9:00	3	61.7	61.6	44.4	61.7	-	-
10/04/16 10:00	6	64.5	63.7	57.1	64.5	-	-
10/04/16 11:00	5	61.0	58.9	57.1	61.0	-	-
10/04/16 12:00	9	65.8	60.7	64.2	65.8	-	-
10/04/16 13:00	7	61.4	60.4	54.8	61.4	-	-
10/04/16 14:00	5	61.6	58.3	58.8	61.6	-	-
10/04/16 15:00	10	62.1	61.5	53.9	62.1	-	-
10/04/16 16:00	7	57.0	56.3	49.4	57.0	-	-
10/04/16 17:00	7	65.0	64.8	53.0	65.0	-	-
10/04/16 18:00	16	65.4	65.1	53.7	65.4	-	-
10/04/16 19:00	9	67.7	67.1	58.6	-	67.7	-
10/04/16 20:00	1	57.9	56.5	52.3	-	57.9	-
10/04/16 21:00	7	70.8	70.6	57.1	-	70.8	-
10/04/16 22:00	2	63.1	61.3	58.6	-	63.1	-
10/04/16 23:00	4	73.8	73.6	59.4	-	-	73.8
	<b>117</b>	<b>66.6</b>	<b>67.0</b>	<b>56.7</b>	<b>63.3</b>	<b>67.1</b>	<b>69.1</b>

Location: Mid Runway NMT # 3



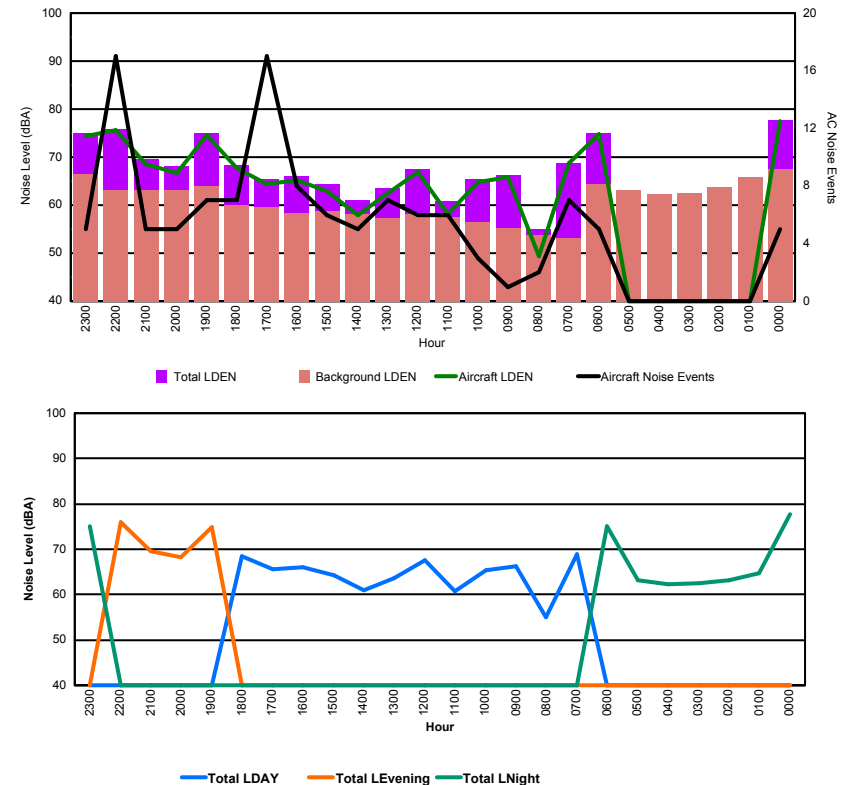


## Luxembourg Airport Noise Distribution by Hour

Between 10/04/2016 00:00:00 and 10/04/2016 23:59:59 (Local Time)

Day	Aircraft Events	Total LDEN dB (A)	Aircraft LDEN dB(A)	Background LDEN dB(A)	Total LDay dB(A)	Total LEvening dB(A)	Total LNight dB (A)
10/04/16 0:00	5	77.8	77.6	67.4	-	-	77.8
10/04/16 1:00	-	64.8	-	65.9	-	-	64.8
10/04/16 2:00	-	63.1	-	63.8	-	-	63.1
10/04/16 3:00	-	62.4	-	62.4	-	-	62.4
10/04/16 4:00	-	62.2	-	62.2	-	-	62.2
10/04/16 5:00	-	63.1	-	63.2	-	-	63.1
10/04/16 6:00	5	75.0	74.7	64.3	-	-	75.0
10/04/16 7:00	7	68.8	68.7	53.2	68.8	-	-
10/04/16 8:00	2	55.1	49.3	53.8	55.1	-	-
10/04/16 9:00	1	66.2	65.8	55.3	66.2	-	-
10/04/16 10:00	3	65.4	64.8	56.4	65.4	-	-
10/04/16 11:00	6	60.8	58.2	57.6	60.8	-	-
10/04/16 12:00	6	67.5	66.9	58.1	67.5	-	-
10/04/16 13:00	7	63.6	62.5	57.2	63.6	-	-
10/04/16 14:00	5	61.0	57.9	58.1	61.0	-	-
10/04/16 15:00	6	64.3	63.0	58.7	64.3	-	-
10/04/16 16:00	8	66.0	65.3	58.3	66.0	-	-
10/04/16 17:00	17	65.5	64.4	59.5	65.5	-	-
10/04/16 18:00	7	68.4	67.7	59.9	68.4	-	-
10/04/16 19:00	7	74.9	74.5	63.9	-	74.9	-
10/04/16 20:00	5	68.2	66.6	63.2	-	68.2	-
10/04/16 21:00	5	69.6	68.6	63.2	-	69.6	-
10/04/16 22:00	17	75.9	75.7	63.1	-	75.9	-
10/04/16 23:00	5	75.0	74.4	66.4	-	-	75.0
	<b>124</b>	<b>70.4</b>	<b>70.8</b>	<b>62.2</b>	<b>65.5</b>	<b>73.3</b>	<b>72.2</b>

Location: NDB-Hamm NMT # 4





## Luxembourg Airport Noise Distribution by Hour

Between 10/04/2016 00:00:00 and 10/04/2016 23:59:59 (Local Time)

Day	Aircraft Events	Total LDEN dB (A)	Aircraft LDEN dB(A)	Background LDEN dB(A)	Total LDay dB(A)	Total LEvening dB(A)	Total LNight dB (A)
10/04/16 0:00	4	71.1	69.5	68.4	-	-	71.1
10/04/16 1:00	-	65.1	-	66.4	-	-	65.1
10/04/16 2:00	-	64.2	-	65.3	-	-	64.2
10/04/16 3:00	-	63.8	-	63.8	-	-	63.8
10/04/16 4:00	-	63.4	-	63.4	-	-	63.4
10/04/16 5:00	-	64.3	-	64.4	-	-	64.3
10/04/16 6:00	4	72.9	67.5	71.8	-	-	72.9
10/04/16 7:00	7	61.9	60.5	57.1	61.9	-	-
10/04/16 8:00	2	57.8	43.1	58.1	57.8	-	-
10/04/16 9:00	1	61.0	59.2	56.5	61.0	-	-
10/04/16 10:00	4	59.9	55.9	57.9	59.9	-	-
10/04/16 11:00	2	58.9	50.7	58.3	58.9	-	-
10/04/16 12:00	5	61.6	59.0	58.3	61.6	-	-
10/04/16 13:00	6	60.3	56.4	58.2	60.3	-	-
10/04/16 14:00	2	59.4	48.7	59.1	59.4	-	-
10/04/16 15:00	2	60.5	52.7	59.8	60.5	-	-
10/04/16 16:00	7	63.7	58.5	62.3	63.7	-	-
10/04/16 17:00	15	62.1	58.8	59.7	62.1	-	-
10/04/16 18:00	7	62.7	59.7	59.9	62.7	-	-
10/04/16 19:00	7	69.7	67.7	65.7	-	69.7	-
10/04/16 20:00	5	66.3	60.0	65.2	-	66.3	-
10/04/16 21:00	5	65.0	61.8	62.3	-	65.0	-
10/04/16 22:00	17	68.5	67.6	61.9	-	68.5	-
10/04/16 23:00	4	70.6	68.7	66.2	-	-	70.6
	<b>106</b>	<b>66.0</b>	<b>63.5</b>	<b>64.1</b>	<b>61.1</b>	<b>67.8</b>	<b>68.5</b>

Location: Gare centrale NMT # 5

