

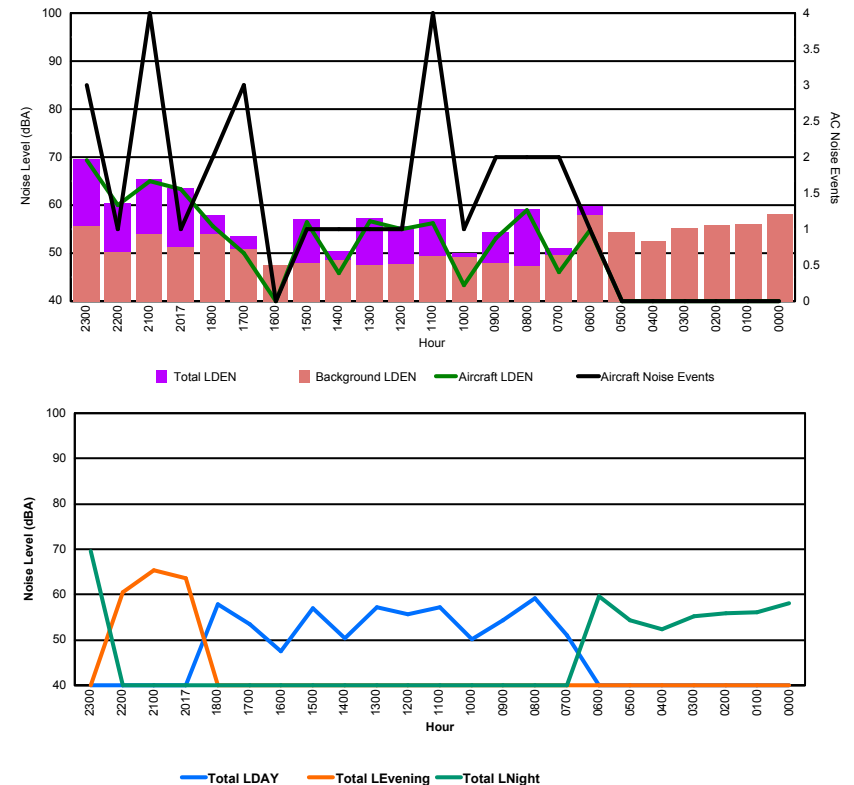


## Luxembourg Airport Noise Distribution by Hour

Between 01/04/2016 00:00:00 and 01/04/2016 23:59:59 (Local Time)

Day	Aircraft Events	Total LDEN dB (A)	Aircraft LDEN dB(A)	Background LDEN dB(A)	Total LDay dB(A)	Total LEvening dB(A)	Total LNight dB (A)
01/04/16 0:00	-	58.1	-	58.2	-	-	58.1
01/04/16 1:00	-	56.0	-	56.0	-	-	56.0
01/04/16 2:00	-	55.8	-	55.8	-	-	55.8
01/04/16 3:00	-	55.3	-	55.3	-	-	55.3
01/04/16 4:00	-	52.4	-	52.4	-	-	52.4
01/04/16 5:00	-	54.3	-	54.3	-	-	54.3
01/04/16 6:00	1	59.7	54.8	58.0	-	-	59.7
01/04/16 7:00	2	51.1	46.0	49.5	51.1	-	-
01/04/16 8:00	2	59.2	58.9	47.3	59.2	-	-
01/04/16 9:00	2	54.3	53.1	48.0	54.3	-	-
01/04/16 10:00	1	50.1	43.4	49.1	50.1	-	-
01/04/16 11:00	4	57.1	56.3	49.4	57.1	-	-
01/04/16 12:00	1	55.7	54.9	47.8	55.7	-	-
01/04/16 13:00	1	57.2	56.7	47.4	57.2	-	-
01/04/16 14:00	1	50.4	45.8	48.6	50.4	-	-
01/04/16 15:00	1	57.0	56.4	48.0	57.0	-	-
01/04/16 16:00	-	47.4	-	47.4	47.4	-	-
01/04/16 17:00	3	53.5	50.1	50.9	53.5	-	-
01/04/16 18:00	2	57.9	55.7	54.0	57.9	-	-
01/04/16 20:17	1	63.6	63.3	51.2	-	63.6	-
01/04/16 21:00	4	65.4	65.1	53.9	-	65.4	-
01/04/16 22:00	1	60.5	60.1	50.2	-	60.5	-
01/04/16 23:00	3	69.6	69.4	55.6	-	-	69.6
	<b>30</b>	<b>60.1</b>	<b>60.7</b>	<b>53.2</b>	<b>55.5</b>	<b>63.6</b>	<b>61.9</b>

Location: Roodt/Syr NMT # 1



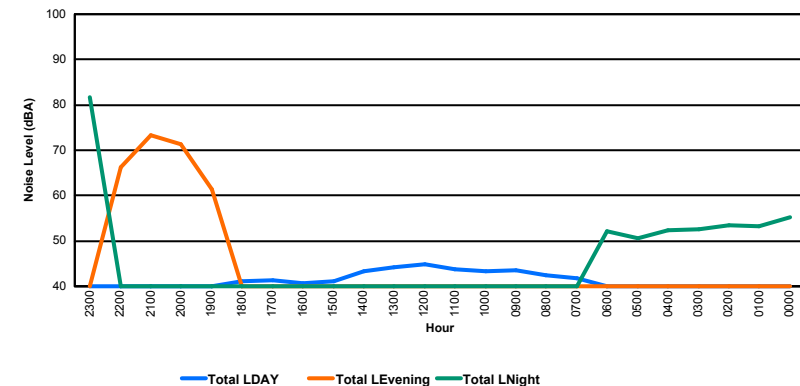
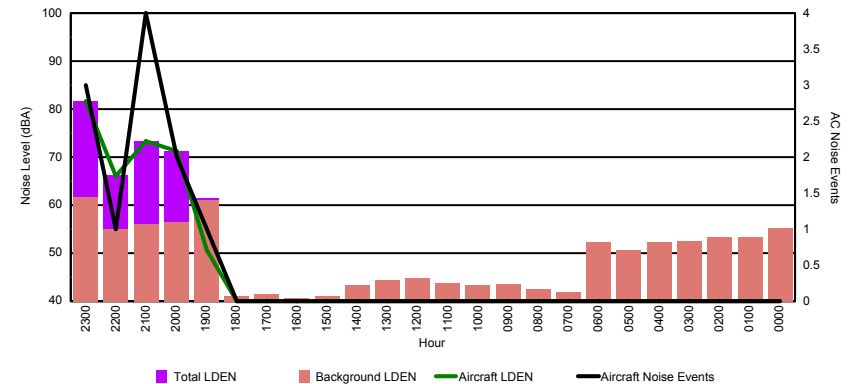


## Luxembourg Airport Noise Distribution by Hour

Between 01/04/2016 00:00:00 and 01/04/2016 23:59:59 (Local Time)

Day	Aircraft Events	Total LDEN dB (A)	Aircraft LDEN dB(A)	Background LDEN dB(A)	Total LDay dB(A)	Total LEvening dB(A)	Total LNight dB (A)
01/04/16 0:00	-	55.3	-	55.3	-	-	55.3
01/04/16 1:00	-	53.3	-	53.3	-	-	53.3
01/04/16 2:00	-	53.4	-	53.4	-	-	53.4
01/04/16 3:00	-	52.6	-	52.6	-	-	52.6
01/04/16 4:00	-	52.3	-	52.3	-	-	52.3
01/04/16 5:00	-	50.6	-	50.6	-	-	50.6
01/04/16 6:00	-	52.2	-	52.2	-	-	52.2
01/04/16 7:00	-	41.8	-	41.8	41.8	-	-
01/04/16 8:00	-	42.5	-	42.5	42.5	-	-
01/04/16 9:00	-	43.5	-	43.5	43.5	-	-
01/04/16 10:00	-	43.4	-	43.4	43.4	-	-
01/04/16 11:00	-	43.7	-	43.7	43.7	-	-
01/04/16 12:00	-	44.8	-	44.8	44.8	-	-
01/04/16 13:00	-	44.3	-	44.3	44.3	-	-
01/04/16 14:00	-	43.3	-	43.3	43.3	-	-
01/04/16 15:00	-	41.1	-	41.1	41.1	-	-
01/04/16 16:00	-	40.6	-	40.6	40.6	-	-
01/04/16 17:00	-	41.4	-	41.4	41.4	-	-
01/04/16 18:00	-	41.0	-	41.0	41.0	-	-
01/04/16 19:00	1	61.5	50.7	61.1	-	61.5	-
01/04/16 20:00	2	71.3	71.2	56.4	-	71.3	-
01/04/16 21:00	4	73.4	73.3	56.0	-	73.4	-
01/04/16 22:00	1	66.3	66.0	54.9	-	66.3	-
01/04/16 23:00	3	81.6	81.6	61.6	-	-	81.6
	<b>11</b>	<b>68.9</b>	<b>75.6</b>	<b>53.6</b>	<b>42.8</b>	<b>70.1</b>	<b>72.6</b>

Location: DVOR NMT # 2



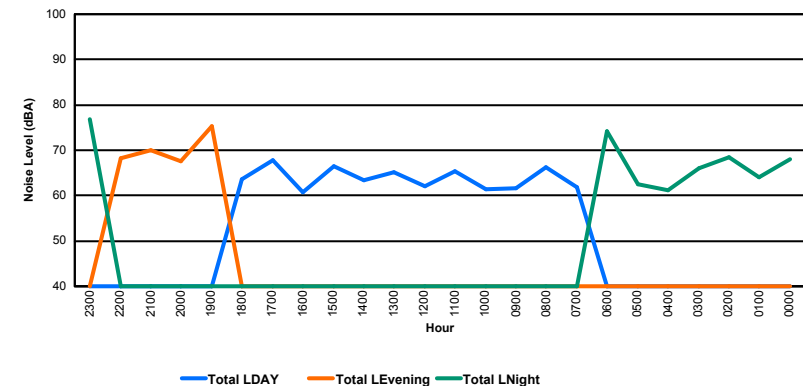
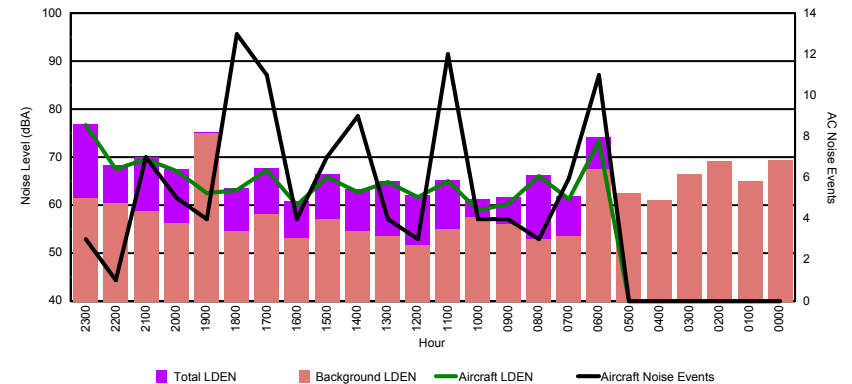


## Luxembourg Airport Noise Distribution by Hour

Between 01/04/2016 00:00:00 and 01/04/2016 23:59:59 (Local Time)

Day	Aircraft Events	Total LDEN dB (A)	Aircraft LDEN dB(A)	Background LDEN dB(A)	Total LDay dB(A)	Total LEvening dB(A)	Total LNight dB (A)
01/04/16 0:00	-	68.1	-	69.3	-	-	68.1
01/04/16 1:00	-	64.1	-	65.0	-	-	64.1
01/04/16 2:00	-	68.5	-	69.2	-	-	68.5
01/04/16 3:00	-	66.1	-	66.5	-	-	66.1
01/04/16 4:00	-	61.1	-	61.1	-	-	61.1
01/04/16 5:00	-	62.5	-	62.5	-	-	62.5
01/04/16 6:00	11	74.1	73.3	67.4	-	-	74.1
01/04/16 7:00	6	61.8	61.2	53.5	61.8	-	-
01/04/16 8:00	3	66.2	66.0	52.9	66.2	-	-
01/04/16 9:00	4	61.6	60.3	56.0	61.6	-	-
01/04/16 10:00	4	61.3	59.0	57.5	61.3	-	-
01/04/16 11:00	12	65.3	64.9	55.0	65.3	-	-
01/04/16 12:00	3	62.0	61.6	51.7	62.0	-	-
01/04/16 13:00	4	65.1	64.7	53.5	65.1	-	-
01/04/16 14:00	9	63.3	62.7	54.5	63.3	-	-
01/04/16 15:00	7	66.5	65.9	57.1	66.5	-	-
01/04/16 16:00	4	60.8	60.0	53.2	60.8	-	-
01/04/16 17:00	11	67.8	67.3	58.1	67.8	-	-
01/04/16 18:00	13	63.6	63.1	54.5	63.6	-	-
01/04/16 19:00	4	75.3	62.5	75.1	-	75.3	-
01/04/16 20:00	5	67.5	67.1	56.2	-	67.5	-
01/04/16 21:00	7	69.9	69.5	58.7	-	69.9	-
01/04/16 22:00	1	68.3	67.5	60.4	-	68.3	-
01/04/16 23:00	3	76.9	76.7	61.5	-	-	76.9
	<b>111</b>	<b>68.9</b>	<b>68.2</b>	<b>64.8</b>	<b>64.4</b>	<b>71.5</b>	<b>70.9</b>

Location: Mid Runway NMT # 3



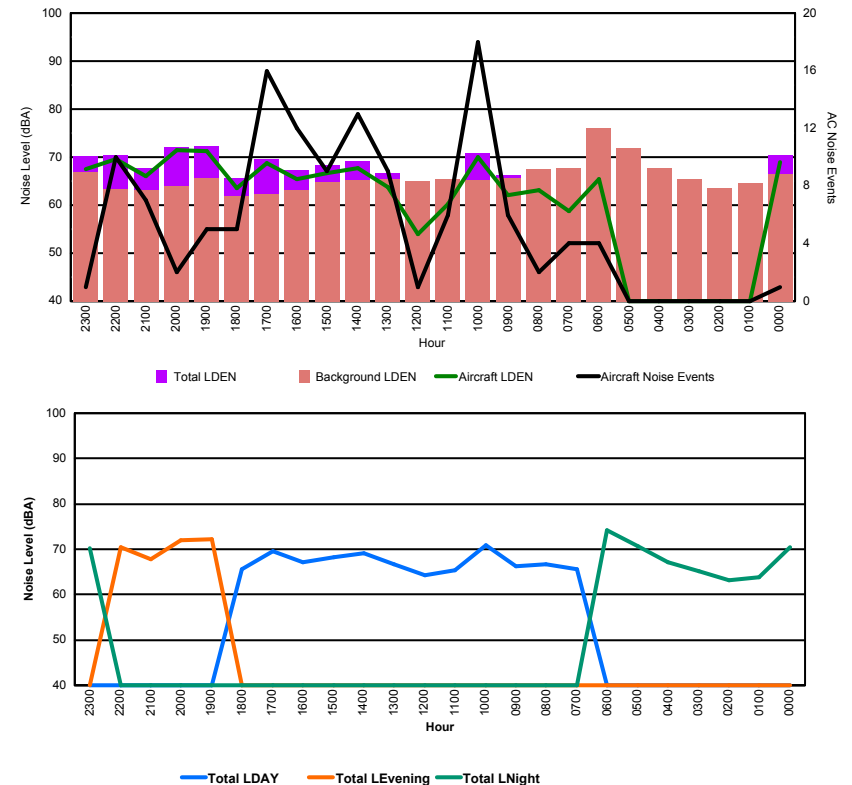


## Luxembourg Airport Noise Distribution by Hour

Between 01/04/2016 00:00:00 and 01/04/2016 23:59:59 (Local Time)

Day	Aircraft Events	Total LDEN dB (A)	Aircraft LDEN dB(A)	Background LDEN dB(A)	Total LDay dB(A)	Total LEvening dB(A)	Total LNight dB (A)
01/04/16 0:00	1	70.5	68.9	66.4	-	-	70.5
01/04/16 1:00	-	63.9	-	64.5	-	-	63.9
01/04/16 2:00	-	63.1	-	63.6	-	-	63.1
01/04/16 3:00	-	65.2	-	65.5	-	-	65.2
01/04/16 4:00	-	67.1	-	67.8	-	-	67.1
01/04/16 5:00	-	70.6	-	71.9	-	-	70.6
01/04/16 6:00	4	74.1	65.5	76.1	-	-	74.1
01/04/16 7:00	4	65.5	58.8	67.7	65.5	-	-
01/04/16 8:00	2	66.7	63.1	67.6	66.7	-	-
01/04/16 9:00	6	66.2	62.0	65.7	66.2	-	-
01/04/16 10:00	18	70.9	70.1	65.2	70.9	-	-
01/04/16 11:00	6	65.4	60.2	65.4	65.4	-	-
01/04/16 12:00	1	64.3	53.9	65.0	64.3	-	-
01/04/16 13:00	9	66.6	63.8	65.5	66.6	-	-
01/04/16 14:00	13	69.1	67.7	65.3	69.1	-	-
01/04/16 15:00	9	68.3	66.7	64.7	68.3	-	-
01/04/16 16:00	12	67.2	65.4	63.2	67.2	-	-
01/04/16 17:00	16	69.6	68.8	62.3	69.6	-	-
01/04/16 18:00	5	65.7	63.5	61.8	65.7	-	-
01/04/16 19:00	5	72.3	71.3	65.6	-	72.3	-
01/04/16 20:00	2	72.1	71.4	64.0	-	72.1	-
01/04/16 21:00	7	67.8	66.0	63.2	-	67.8	-
01/04/16 22:00	10	70.4	69.6	63.4	-	70.4	-
01/04/16 23:00	1	70.3	67.6	66.8	-	-	70.3
	<b>131</b>	<b>69.0</b>	<b>67.2</b>	<b>67.4</b>	<b>67.6</b>	<b>71.0</b>	<b>69.5</b>

Location: NDB-Hamm NMT # 4

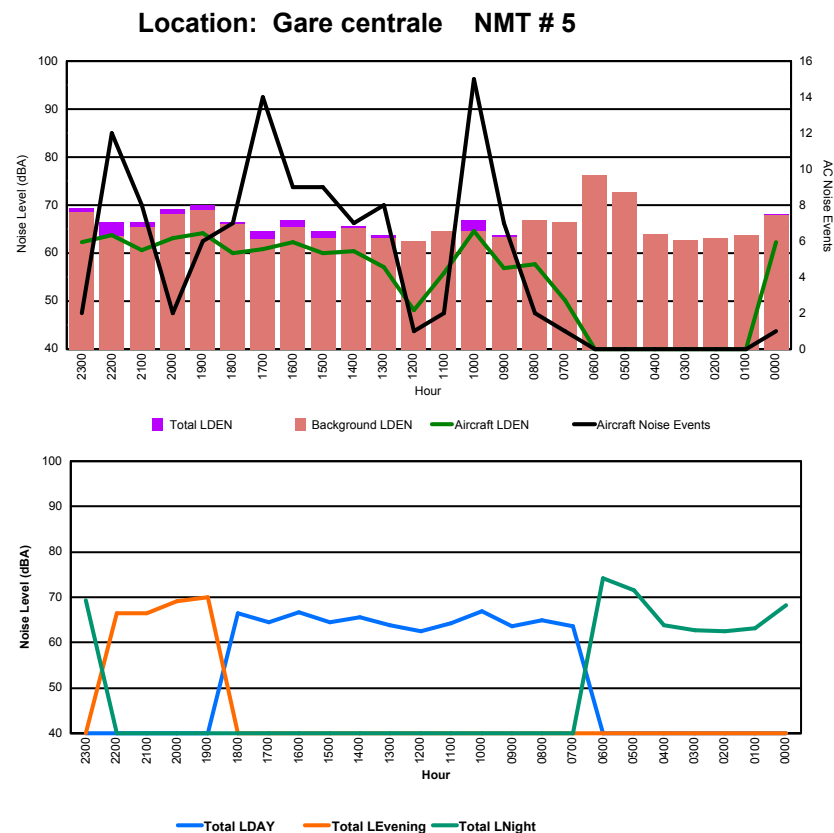




## Luxembourg Airport Noise Distribution by Hour

Between 01/04/2016 00:00:00 and 01/04/2016 23:59:59 (Local Time)

Day	Aircraft Events	Total LDEN dB (A)	Aircraft LDEN dB(A)	Background LDEN dB(A)	Total LDay dB(A)	Total LEvening dB(A)	Total LNight dB (A)
01/04/16 0:00	1	68.2	62.3	67.9	-	-	68.2
01/04/16 1:00	-	63.2	-	63.8	-	-	63.2
01/04/16 2:00	-	62.5	-	63.1	-	-	62.5
01/04/16 3:00	-	62.8	-	62.8	-	-	62.8
01/04/16 4:00	-	63.8	-	64.0	-	-	63.8
01/04/16 5:00	-	71.6	-	72.7	-	-	71.6
01/04/16 6:00	-	74.3	-	76.2	-	-	74.3
01/04/16 7:00	1	63.5	50.2	66.5	63.5	-	-
01/04/16 8:00	2	64.9	57.7	66.8	64.9	-	-
01/04/16 9:00	7	63.7	56.8	63.3	63.7	-	-
01/04/16 10:00	15	66.9	64.5	64.5	66.9	-	-
01/04/16 11:00	2	64.2	55.8	64.5	64.2	-	-
01/04/16 12:00	1	62.5	48.2	62.4	62.5	-	-
01/04/16 13:00	8	63.8	57.0	63.2	63.8	-	-
01/04/16 14:00	7	65.7	60.5	65.2	65.7	-	-
01/04/16 15:00	9	64.5	60.0	63.1	64.5	-	-
01/04/16 16:00	9	66.8	62.3	65.4	66.8	-	-
01/04/16 17:00	14	64.5	60.8	62.9	64.5	-	-
01/04/16 18:00	7	66.5	60.0	66.1	66.5	-	-
01/04/16 19:00	6	69.9	64.2	68.9	-	69.9	-
01/04/16 20:00	2	69.2	63.2	68.1	-	69.2	-
01/04/16 21:00	8	66.5	60.7	65.4	-	66.5	-
01/04/16 22:00	12	66.5	63.8	63.6	-	66.5	-
01/04/16 23:00	2	69.4	62.2	68.6	-	-	69.4
	<b>113</b>	<b>67.3</b>	<b>61.0</b>	<b>67.6</b>	<b>65.0</b>	<b>68.3</b>	<b>69.1</b>



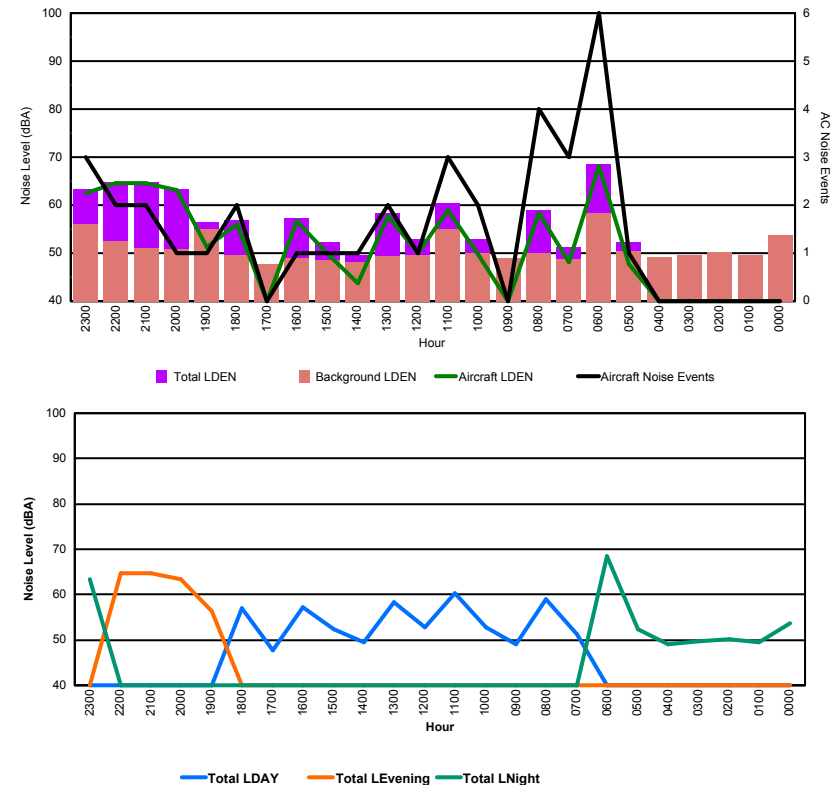


## Luxembourg Airport Noise Distribution by Hour

Between 02/04/2016 00:00:00 and 02/04/2016 23:59:59 (Local Time)

Day	Aircraft Events	Total LDEN dB (A)	Aircraft LDEN dB(A)	Background LDEN dB(A)	Total LDay dB(A)	Total LEvening dB(A)	Total LNight dB (A)
02/04/16 0:00	-	53.6	-	53.7	-	-	53.6
02/04/16 1:00	-	49.5	-	49.5	-	-	49.5
02/04/16 2:00	-	50.2	-	50.2	-	-	50.2
02/04/16 3:00	-	49.6	-	49.6	-	-	49.6
02/04/16 4:00	-	49.1	-	49.1	-	-	49.1
02/04/16 5:00	1	52.3	47.7	50.5	-	-	52.3
02/04/16 6:00	6	68.5	68.1	58.4	-	-	68.5
02/04/16 7:00	3	51.3	48.1	48.7	51.3	-	-
02/04/16 8:00	4	58.9	58.3	49.9	58.9	-	-
02/04/16 9:00	-	49.0	-	49.0	49.0	-	-
02/04/16 10:00	2	52.9	49.8	49.9	52.9	-	-
02/04/16 11:00	3	60.4	59.0	55.1	60.4	-	-
02/04/16 12:00	1	52.9	50.1	49.6	52.9	-	-
02/04/16 13:00	2	58.4	57.8	49.3	58.4	-	-
02/04/16 14:00	1	49.5	43.7	48.2	49.5	-	-
02/04/16 15:00	1	52.3	49.9	48.6	52.3	-	-
02/04/16 16:00	1	57.3	56.6	48.9	57.3	-	-
02/04/16 17:00	-	47.7	-	47.7	47.7	-	-
02/04/16 18:00	2	56.9	56.1	49.6	56.9	-	-
02/04/16 19:00	1	56.4	51.2	55.0	-	56.4	-
02/04/16 20:00	1	63.4	63.1	50.8	-	63.4	-
02/04/16 21:00	2	64.7	64.5	51.1	-	64.7	-
02/04/16 22:00	2	64.8	64.5	52.6	-	64.8	-
02/04/16 23:00	3	63.4	62.6	56.0	-	-	63.4
	<b>36</b>	<b>59.8</b>	<b>60.6</b>	<b>52.0</b>	<b>55.8</b>	<b>63.3</b>	<b>61.0</b>

Location: Roodt/Syr NMT # 1



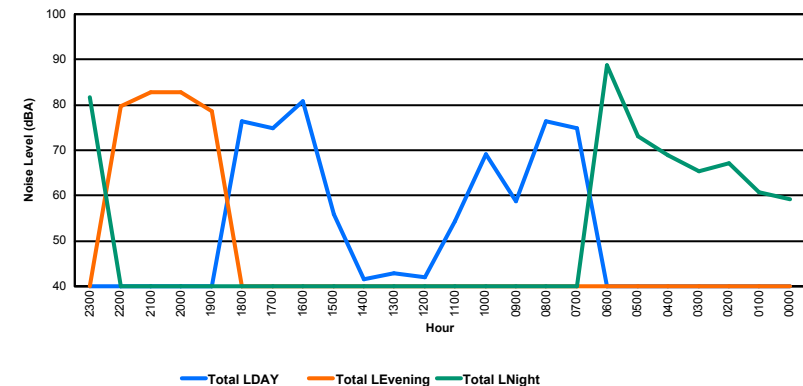
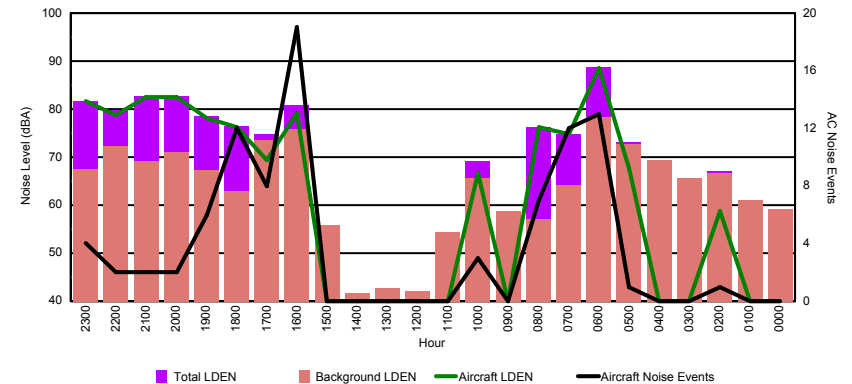


## Luxembourg Airport Noise Distribution by Hour

Between 02/04/2016 00:00:00 and 02/04/2016 23:59:59 (Local Time)

Day	Aircraft Events	Total LDEN dB (A)	Aircraft LDEN dB(A)	Background LDEN dB(A)	Total LDay dB(A)	Total LEvening dB(A)	Total LNight dB (A)
02/04/16 0:00	-	59.2	-	59.2	-	-	59.2
02/04/16 1:00	-	60.8	-	61.0	-	-	60.8
02/04/16 2:00	1	67.1	58.7	66.7	-	-	67.1
02/04/16 3:00	-	65.4	-	65.7	-	-	65.4
02/04/16 4:00	-	68.9	-	69.3	-	-	68.9
02/04/16 5:00	1	73.2	67.8	72.7	-	-	73.2
02/04/16 6:00	13	88.7	88.6	78.4	-	-	88.7
02/04/16 7:00	12	74.8	74.7	64.2	74.8	-	-
02/04/16 8:00	7	76.3	76.2	57.0	76.3	-	-
02/04/16 9:00	-	58.8	-	58.8	58.8	-	-
02/04/16 10:00	3	69.1	66.6	65.6	69.1	-	-
02/04/16 11:00	-	54.3	-	54.3	54.3	-	-
02/04/16 12:00	-	42.0	-	42.0	42.0	-	-
02/04/16 13:00	-	42.8	-	42.8	42.8	-	-
02/04/16 14:00	-	41.6	-	41.6	41.6	-	-
02/04/16 15:00	-	55.9	-	55.9	55.9	-	-
02/04/16 16:00	19	80.8	79.2	75.9	80.8	-	-
02/04/16 17:00	8	74.8	69.4	73.6	74.8	-	-
02/04/16 18:00	12	76.5	76.3	63.0	76.5	-	-
02/04/16 19:00	6	78.5	78.2	67.2	-	78.5	-
02/04/16 20:00	2	82.8	82.4	71.0	-	82.8	-
02/04/16 21:00	2	82.7	82.5	69.1	-	82.7	-
02/04/16 22:00	2	79.7	78.8	72.2	-	79.7	-
02/04/16 23:00	4	81.6	81.6	67.4	-	-	81.6
	<b>92</b>	<b>78.6</b>	<b>80.5</b>	<b>69.8</b>	<b>73.6</b>	<b>81.3</b>	<b>80.6</b>

Location: DVOR NMT # 2



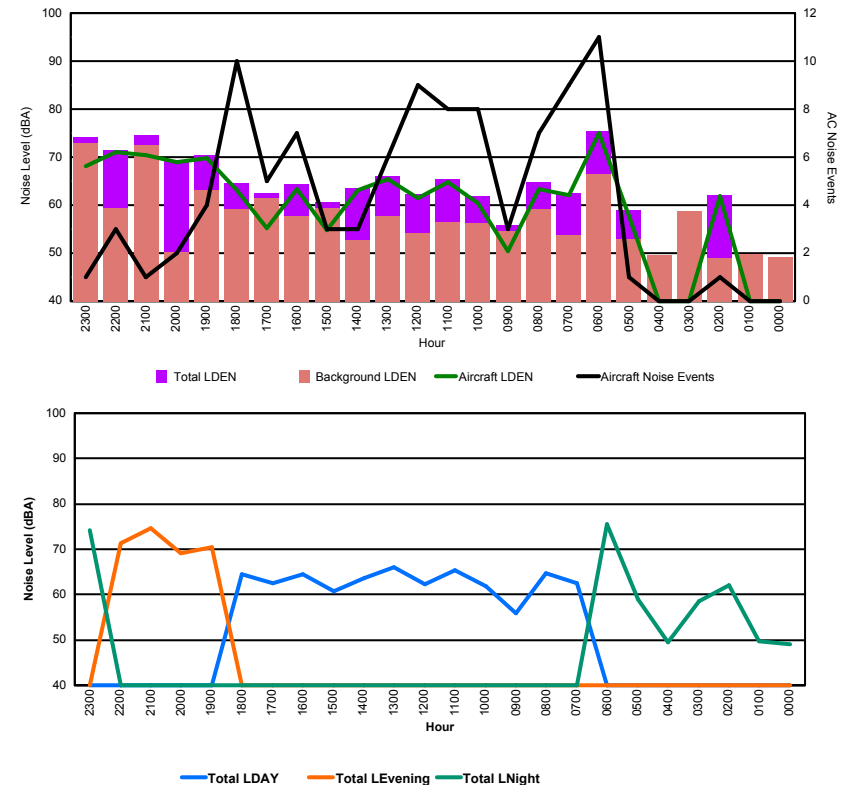


## Luxembourg Airport Noise Distribution by Hour

Between 02/04/2016 00:00:00 and 02/04/2016 23:59:59 (Local Time)

Day	Aircraft Events	Total LDEN dB (A)	Aircraft LDEN dB(A)	Background LDEN dB(A)	Total LDay dB(A)	Total LEvening dB(A)	Total LNight dB (A)
02/04/16 0:00	-	49.1	-	49.1	-	-	49.1
02/04/16 1:00	-	49.7	-	49.7	-	-	49.7
02/04/16 2:00	1	62.1	61.8	48.9	-	-	62.1
02/04/16 3:00	-	58.6	-	58.7	-	-	58.6
02/04/16 4:00	-	49.5	-	49.5	-	-	49.5
02/04/16 5:00	1	59.0	57.8	52.9	-	-	59.0
02/04/16 6:00	11	75.5	75.0	66.5	-	-	75.5
02/04/16 7:00	9	62.6	62.1	53.7	62.6	-	-
02/04/16 8:00	7	64.7	63.3	59.1	64.7	-	-
02/04/16 9:00	3	55.8	50.4	54.5	55.8	-	-
02/04/16 10:00	8	61.8	60.4	56.2	61.8	-	-
02/04/16 11:00	8	65.4	64.8	56.5	65.4	-	-
02/04/16 12:00	9	62.2	61.5	54.1	62.2	-	-
02/04/16 13:00	6	66.1	65.4	57.7	66.1	-	-
02/04/16 14:00	3	63.6	63.2	52.8	63.6	-	-
02/04/16 15:00	3	60.7	54.7	59.4	60.7	-	-
02/04/16 16:00	7	64.4	63.4	57.7	64.4	-	-
02/04/16 17:00	5	62.4	55.3	61.5	62.4	-	-
02/04/16 18:00	10	64.5	63.1	59.2	64.5	-	-
02/04/16 19:00	4	70.5	69.7	63.1	-	70.5	-
02/04/16 20:00	2	69.1	69.0	50.2	-	69.1	-
02/04/16 21:00	1	74.6	70.4	72.6	-	74.6	-
02/04/16 22:00	3	71.4	71.1	59.4	-	71.4	-
02/04/16 23:00	1	74.1	68.1	72.9	-	-	74.1
	<b>102</b>	<b>68.1</b>	<b>67.0</b>	<b>63.5</b>	<b>63.5</b>	<b>71.9</b>	<b>69.1</b>

Location: Mid Runway NMT # 3



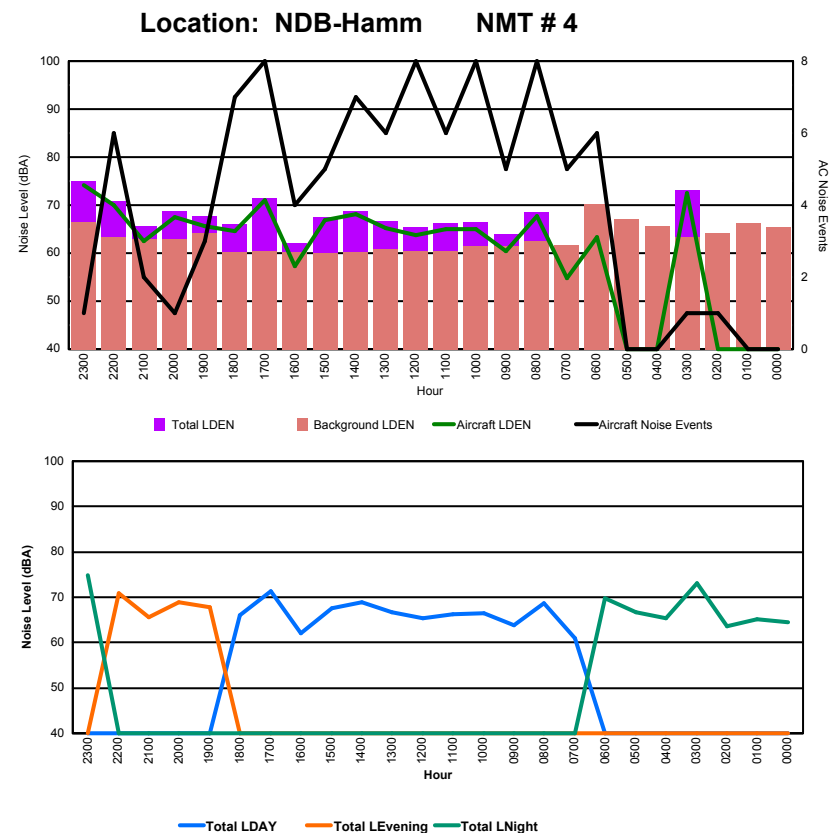




## Luxembourg Airport Noise Distribution by Hour

Between 02/04/2016 00:00:00 and 02/04/2016 23:59:59 (Local Time)

Day	Aircraft Events	Total LDEN dB (A)	Aircraft LDEN dB(A)	Background LDEN dB(A)	Total LDay dB(A)	Total LEvening dB(A)	Total LNight dB (A)
02/04/16 0:00	-	64.4	-	65.4	-	-	64.4
02/04/16 1:00	-	65.2	-	66.3	-	-	65.2
02/04/16 2:00	1	63.5	37.5	64.1	-	-	63.5
02/04/16 3:00	1	73.1	72.5	63.4	-	-	73.1
02/04/16 4:00	-	65.4	-	65.7	-	-	65.4
02/04/16 5:00	-	66.6	-	67.1	-	-	66.6
02/04/16 6:00	6	69.7	63.4	70.3	-	-	69.7
02/04/16 7:00	5	61.0	54.8	61.7	61.0	-	-
02/04/16 8:00	8	68.6	67.8	62.6	68.6	-	-
02/04/16 9:00	5	63.9	60.5	61.4	63.9	-	-
02/04/16 10:00	8	66.5	64.9	61.4	66.5	-	-
02/04/16 11:00	6	66.3	65.0	60.5	66.3	-	-
02/04/16 12:00	8	65.4	63.8	60.5	65.4	-	-
02/04/16 13:00	6	66.6	65.3	60.8	66.6	-	-
02/04/16 14:00	7	68.8	68.1	60.3	68.8	-	-
02/04/16 15:00	5	67.6	66.8	60.0	67.6	-	-
02/04/16 16:00	4	62.1	57.3	60.3	62.1	-	-
02/04/16 17:00	8	71.4	71.0	60.5	71.4	-	-
02/04/16 18:00	7	66.0	64.6	60.3	66.0	-	-
02/04/16 19:00	3	67.8	65.6	64.1	-	67.8	-
02/04/16 20:00	1	68.8	67.5	62.9	-	68.8	-
02/04/16 21:00	2	65.7	62.5	62.9	-	65.7	-
02/04/16 22:00	6	70.8	70.0	63.3	-	70.8	-
02/04/16 23:00	1	74.9	74.2	66.5	-	-	74.9
	<b>98</b>	<b>68.4</b>	<b>67.6</b>	<b>64.0</b>	<b>67.0</b>	<b>68.7</b>	<b>69.8</b>

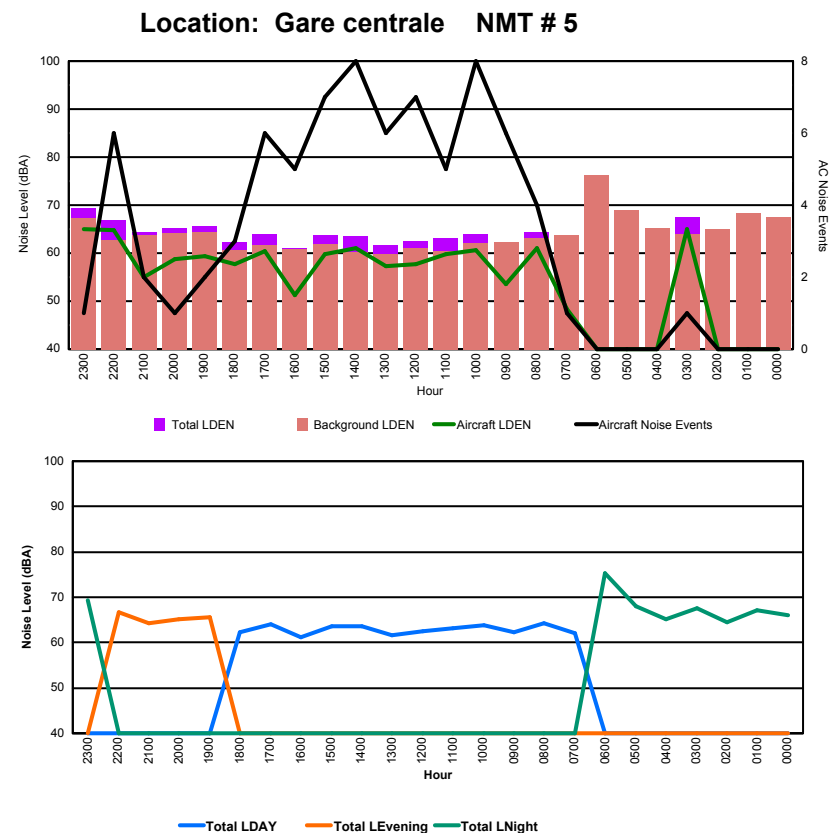




## Luxembourg Airport Noise Distribution by Hour

Between 02/04/2016 00:00:00 and 02/04/2016 23:59:59 (Local Time)

Day	Aircraft Events	Total LDEN dB (A)	Aircraft LDEN dB(A)	Background LDEN dB(A)	Total LDay dB(A)	Total LEvening dB(A)	Total LNight dB (A)
02/04/16 0:00	-	66.1	-	67.6	-	-	66.1
02/04/16 1:00	-	67.2	-	68.3	-	-	67.2
02/04/16 2:00	-	64.6	-	65.0	-	-	64.6
02/04/16 3:00	1	67.5	65.0	64.0	-	-	67.5
02/04/16 4:00	-	65.1	-	65.3	-	-	65.1
02/04/16 5:00	-	68.0	-	69.0	-	-	68.0
02/04/16 6:00	-	75.3	-	76.3	-	-	75.3
02/04/16 7:00	1	62.1	48.3	63.7	62.1	-	-
02/04/16 8:00	4	64.3	61.0	63.2	64.3	-	-
02/04/16 9:00	6	62.3	53.5	62.3	62.3	-	-
02/04/16 10:00	8	63.9	60.7	62.0	63.9	-	-
02/04/16 11:00	5	63.1	59.8	60.5	63.1	-	-
02/04/16 12:00	7	62.5	57.7	61.0	62.5	-	-
02/04/16 13:00	6	61.6	57.3	59.7	61.6	-	-
02/04/16 14:00	8	63.6	61.0	60.2	63.6	-	-
02/04/16 15:00	7	63.7	59.7	61.8	63.7	-	-
02/04/16 16:00	5	61.1	51.3	60.8	61.1	-	-
02/04/16 17:00	6	64.0	60.4	61.6	64.0	-	-
02/04/16 18:00	3	62.3	57.8	60.6	62.3	-	-
02/04/16 19:00	2	65.6	59.3	64.4	-	65.6	-
02/04/16 20:00	1	65.2	58.8	64.2	-	65.2	-
02/04/16 21:00	2	64.3	55.1	63.8	-	64.3	-
02/04/16 22:00	6	66.8	64.8	62.7	-	66.8	-
02/04/16 23:00	1	69.3	65.1	67.3	-	-	69.3
	<b>79</b>	<b>66.5</b>	<b>60.5</b>	<b>66.4</b>	<b>63.0</b>	<b>65.6</b>	<b>69.4</b>



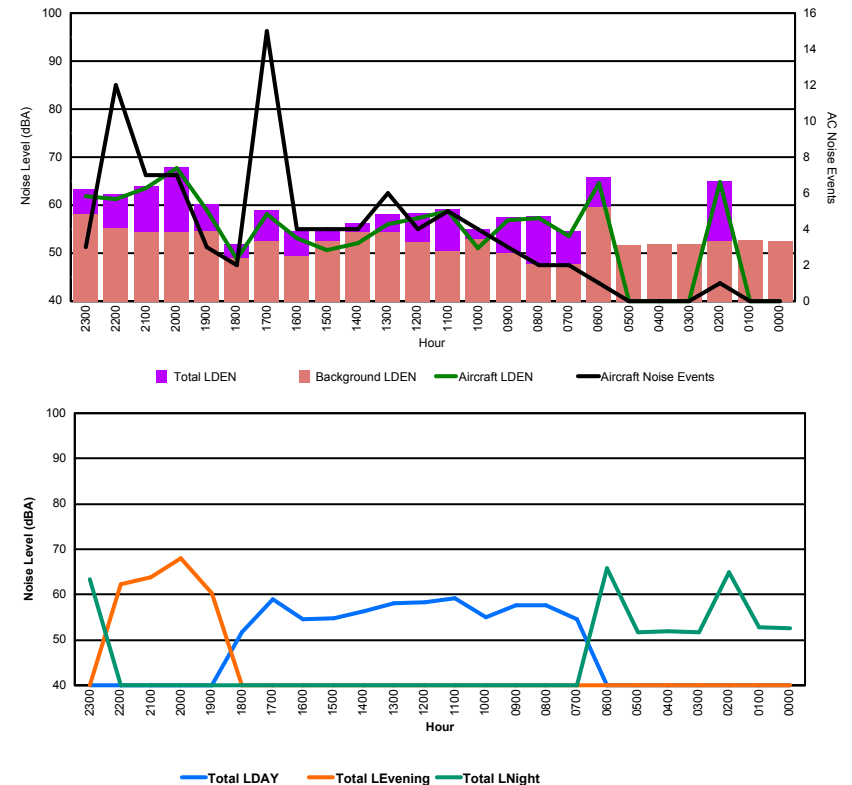


## Luxembourg Airport Noise Distribution by Hour

Between 03/04/2016 00:00:00 and 03/04/2016 23:59:59 (Local Time)

Day	Aircraft Events	Total LDEN dB (A)	Aircraft LDEN dB(A)	Background LDEN dB(A)	Total LDay dB(A)	Total LEvening dB(A)	Total LNight dB (A)
03/04/16 0:00	-	52.5	-	52.5	-	-	52.5
03/04/16 1:00	-	52.8	-	52.8	-	-	52.8
03/04/16 2:00	1	65.0	64.7	52.5	-	-	65.0
03/04/16 3:00	-	51.8	-	51.8	-	-	51.8
03/04/16 4:00	-	51.9	-	51.9	-	-	51.9
03/04/16 5:00	-	51.7	-	51.7	-	-	51.7
03/04/16 6:00	1	65.8	64.6	59.5	-	-	65.8
03/04/16 7:00	2	54.6	53.6	47.7	54.6	-	-
03/04/16 8:00	2	57.7	57.3	47.8	57.7	-	-
03/04/16 9:00	3	57.6	56.8	50.0	57.6	-	-
03/04/16 10:00	4	55.0	51.0	53.0	55.0	-	-
03/04/16 11:00	5	59.2	58.7	50.4	59.2	-	-
03/04/16 12:00	4	58.4	57.3	52.2	58.4	-	-
03/04/16 13:00	6	58.2	56.0	54.3	58.2	-	-
03/04/16 14:00	4	56.3	52.0	54.4	56.3	-	-
03/04/16 15:00	4	54.7	50.7	52.6	54.7	-	-
03/04/16 16:00	4	54.6	53.2	49.3	54.6	-	-
03/04/16 17:00	15	59.0	58.1	52.4	59.0	-	-
03/04/16 18:00	2	51.8	48.8	48.9	51.8	-	-
03/04/16 19:00	3	60.2	58.9	54.5	-	60.2	-
03/04/16 20:00	7	68.0	67.7	54.4	-	68.0	-
03/04/16 21:00	7	63.9	63.5	54.4	-	63.9	-
03/04/16 22:00	12	62.2	61.2	55.3	-	62.2	-
03/04/16 23:00	3	63.4	61.9	58.1	-	-	63.4
	<b>89</b>	<b>60.6</b>	<b>60.6</b>	<b>53.6</b>	<b>56.9</b>	<b>64.6</b>	<b>61.0</b>

Location: Roodt/Syr NMT # 1



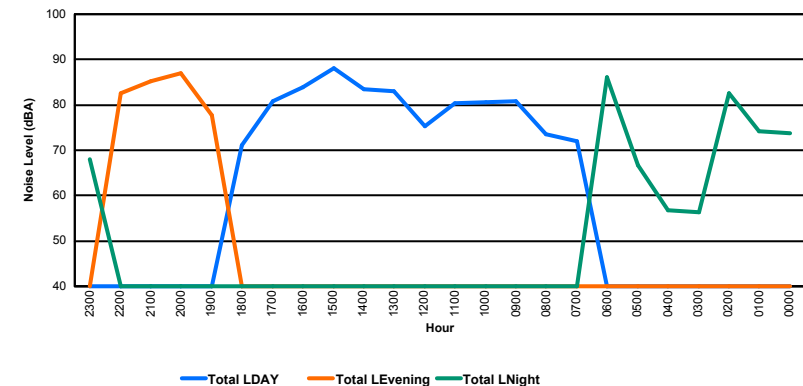
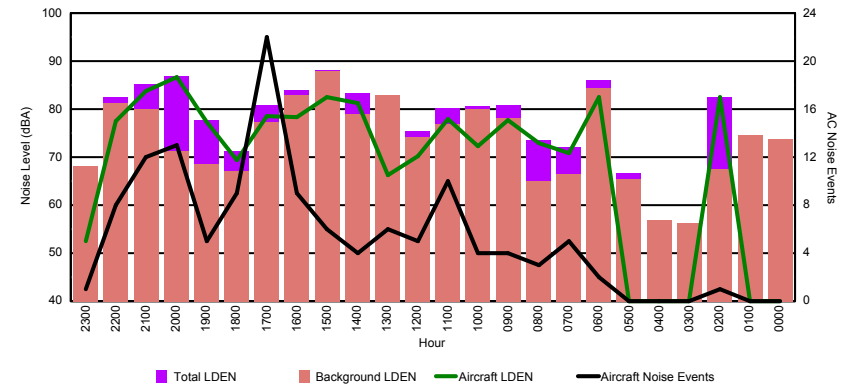


## Luxembourg Airport Noise Distribution by Hour

Between 03/04/2016 00:00:00 and 03/04/2016 23:59:59 (Local Time)

Day	Aircraft Events	Total LDEN dB (A)	Aircraft LDEN dB(A)	Background LDEN dB(A)	Total LDay dB(A)	Total LEvening dB(A)	Total LNight dB (A)
03/04/16 0:00	-	73.8	-	73.8	-	-	73.8
03/04/16 1:00	-	74.2	-	74.5	-	-	74.2
03/04/16 2:00	1	82.6	82.4	67.4	-	-	82.6
03/04/16 3:00	-	56.3	-	56.3	-	-	56.3
03/04/16 4:00	-	56.8	-	56.8	-	-	56.8
03/04/16 5:00	-	66.6	-	65.4	-	-	66.6
03/04/16 6:00	2	86.0	82.4	84.4	-	-	86.0
03/04/16 7:00	5	72.0	70.8	66.4	72.0	-	-
03/04/16 8:00	3	73.6	73.0	64.9	73.6	-	-
03/04/16 9:00	4	80.9	77.7	78.1	80.9	-	-
03/04/16 10:00	4	80.6	72.3	80.0	80.6	-	-
03/04/16 11:00	10	80.3	78.0	76.9	80.3	-	-
03/04/16 12:00	5	75.4	70.2	74.1	75.4	-	-
03/04/16 13:00	6	83.0	66.2	83.0	83.0	-	-
03/04/16 14:00	4	83.4	81.2	78.9	83.4	-	-
03/04/16 15:00	6	88.1	82.5	87.9	88.1	-	-
03/04/16 16:00	9	84.0	78.4	82.9	84.0	-	-
03/04/16 17:00	22	80.9	78.5	77.3	80.9	-	-
03/04/16 18:00	9	71.2	69.3	67.0	71.2	-	-
03/04/16 19:00	5	77.8	77.2	68.5	-	77.8	-
03/04/16 20:00	13	86.9	86.7	71.2	-	86.9	-
03/04/16 21:00	12	85.2	83.7	80.1	-	85.2	-
03/04/16 22:00	8	82.6	77.4	81.2	-	82.6	-
03/04/16 23:00	1	68.1	52.5	68.1	-	-	68.1
	<b>129</b>	<b>81.7</b>	<b>79.8</b>	<b>79.2</b>	<b>81.9</b>	<b>84.2</b>	<b>79.0</b>

Location: DVOR NMT # 2



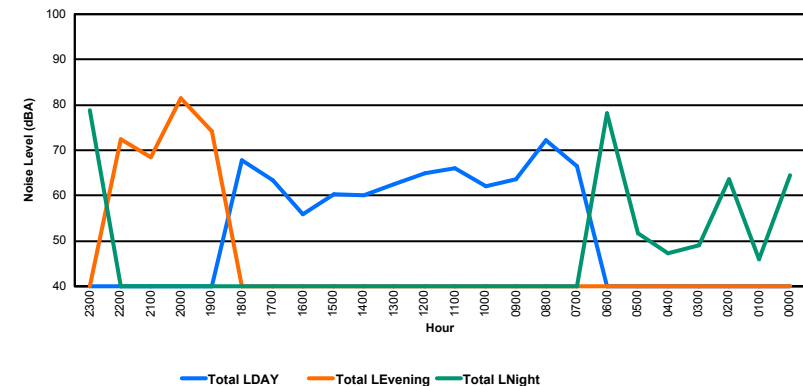
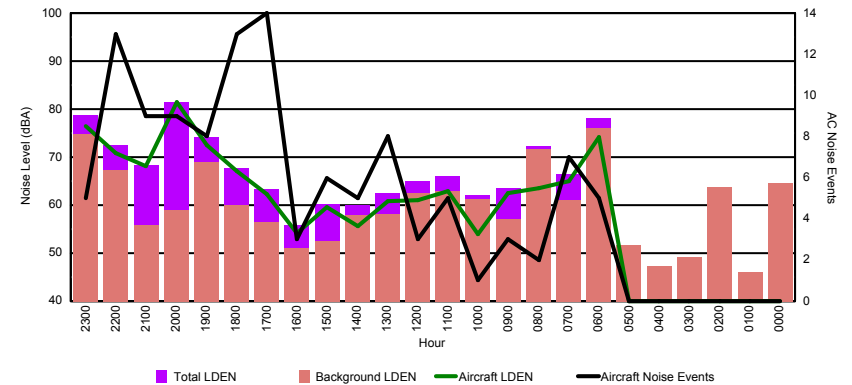


## Luxembourg Airport Noise Distribution by Hour

Between 03/04/2016 00:00:00 and 03/04/2016 23:59:59 (Local Time)

Day	Aircraft Events	Total LDEN dB (A)	Aircraft LDEN dB(A)	Background LDEN dB(A)	Total LDay dB(A)	Total LEvening dB(A)	Total LNight dB (A)
03/04/16 0:00	-	64.6	-	64.6	-	-	64.6
03/04/16 1:00	-	46.0	-	46.0	-	-	46.0
03/04/16 2:00	-	63.7	-	63.7	-	-	63.7
03/04/16 3:00	-	49.1	-	49.1	-	-	49.1
03/04/16 4:00	-	47.2	-	47.2	-	-	47.2
03/04/16 5:00	-	51.6	-	51.6	-	-	51.6
03/04/16 6:00	5	78.2	74.1	76.1	-	-	78.2
03/04/16 7:00	7	66.5	65.1	61.0	66.5	-	-
03/04/16 8:00	2	72.3	63.5	71.7	72.3	-	-
03/04/16 9:00	3	63.5	62.4	57.1	63.5	-	-
03/04/16 10:00	1	62.0	53.9	61.3	62.0	-	-
03/04/16 11:00	5	66.0	63.0	63.0	66.0	-	-
03/04/16 12:00	3	64.9	61.1	62.5	64.9	-	-
03/04/16 13:00	8	62.6	60.8	58.1	62.6	-	-
03/04/16 14:00	5	60.0	55.6	58.0	60.0	-	-
03/04/16 15:00	6	60.3	59.5	52.5	60.3	-	-
03/04/16 16:00	3	55.9	54.2	51.0	55.9	-	-
03/04/16 17:00	14	63.3	62.3	56.5	63.3	-	-
03/04/16 18:00	13	67.8	67.0	59.9	67.8	-	-
03/04/16 19:00	8	74.1	72.5	69.0	-	74.1	-
03/04/16 20:00	9	81.4	81.4	58.9	-	81.4	-
03/04/16 21:00	9	68.4	68.2	55.9	-	68.4	-
03/04/16 22:00	13	72.4	70.8	67.3	-	72.4	-
03/04/16 23:00	5	78.8	76.5	74.8	-	-	78.8
	<b>119</b>	<b>72.0</b>	<b>71.7</b>	<b>66.8</b>	<b>65.7</b>	<b>76.7</b>	<b>72.7</b>

Location: Mid Runway NMT # 3



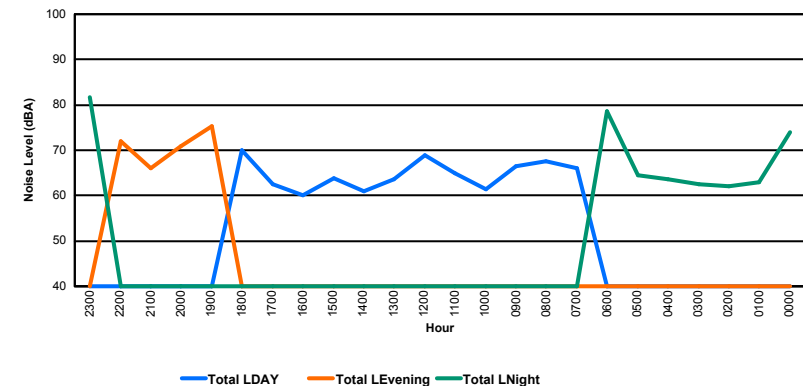
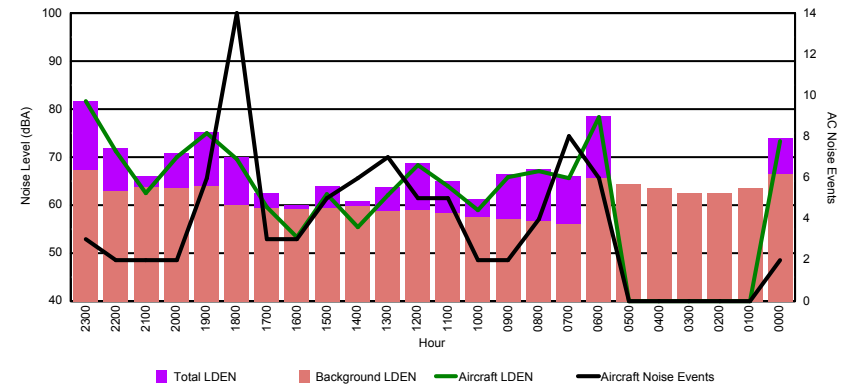


## Luxembourg Airport Noise Distribution by Hour

Between 03/04/2016 00:00:00 and 03/04/2016 23:59:59 (Local Time)

Day	Aircraft Events	Total LDEN dB (A)	Aircraft LDEN dB(A)	Background LDEN dB(A)	Total LDay dB(A)	Total LEvening dB(A)	Total LNight dB (A)
03/04/16 0:00	2	73.9	73.3	66.5	-	-	73.9
03/04/16 1:00	-	62.9	-	63.5	-	-	62.9
03/04/16 2:00	-	62.1	-	62.6	-	-	62.1
03/04/16 3:00	-	62.5	-	62.6	-	-	62.5
03/04/16 4:00	-	63.5	-	63.5	-	-	63.5
03/04/16 5:00	-	64.4	-	64.4	-	-	64.4
03/04/16 6:00	6	78.5	78.3	65.6	-	-	78.5
03/04/16 7:00	8	66.0	65.6	56.1	66.0	-	-
03/04/16 8:00	4	67.5	67.1	56.6	67.5	-	-
03/04/16 9:00	2	66.4	65.9	57.1	66.4	-	-
03/04/16 10:00	2	61.3	59.0	57.6	61.3	-	-
03/04/16 11:00	5	64.9	63.9	58.3	64.9	-	-
03/04/16 12:00	5	68.8	68.3	59.0	68.8	-	-
03/04/16 13:00	7	63.7	62.1	58.8	63.7	-	-
03/04/16 14:00	6	60.9	55.4	59.7	60.9	-	-
03/04/16 15:00	5	63.9	62.2	59.3	63.9	-	-
03/04/16 16:00	3	60.1	53.4	59.1	60.1	-	-
03/04/16 17:00	3	62.5	59.6	59.4	62.5	-	-
03/04/16 18:00	14	69.9	69.5	60.0	69.9	-	-
03/04/16 19:00	6	75.3	75.0	64.0	-	75.3	-
03/04/16 20:00	2	70.8	69.9	63.5	-	70.8	-
03/04/16 21:00	2	66.1	62.5	63.7	-	66.1	-
03/04/16 22:00	2	71.9	71.3	63.0	-	71.9	-
03/04/16 23:00	3	81.7	81.6	67.3	-	-	81.7
	<b>87</b>	<b>71.8</b>	<b>72.4</b>	<b>62.4</b>	<b>65.7</b>	<b>72.1</b>	<b>75.0</b>

Location: NDB-Hamm NMT # 4





## Luxembourg Airport Noise Distribution by Hour

Between 03/04/2016 00:00:00 and 03/04/2016 23:59:59 (Local Time)

Day	Aircraft Events	Total LDEN dB (A)	Aircraft LDEN dB(A)	Background LDEN dB(A)	Total LDay dB(A)	Total LEvening dB(A)	Total LNight dB (A)
03/04/16 0:00	1	70.6	68.8	67.3	-	-	70.6
03/04/16 1:00	-	66.1	-	66.9	-	-	66.1
03/04/16 2:00	-	63.5	-	64.2	-	-	63.5
03/04/16 3:00	-	65.0	-	65.0	-	-	65.0
03/04/16 4:00	-	63.1	-	63.1	-	-	63.1
03/04/16 5:00	-	65.2	-	65.4	-	-	65.2
03/04/16 6:00	6	75.9	70.4	74.8	-	-	75.9
03/04/16 7:00	6	60.7	58.9	56.9	60.7	-	-
03/04/16 8:00	5	59.8	57.2	57.0	59.8	-	-
03/04/16 9:00	1	60.9	57.8	57.9	60.9	-	-
03/04/16 10:00	1	58.5	48.7	58.1	58.5	-	-
03/04/16 11:00	4	60.3	55.0	59.0	60.3	-	-
03/04/16 12:00	3	63.1	59.9	60.4	63.1	-	-
03/04/16 13:00	5	60.3	54.9	59.0	60.3	-	-
03/04/16 14:00	1	60.1	45.2	60.0	60.1	-	-
03/04/16 15:00	1	60.4	54.0	59.3	60.4	-	-
03/04/16 16:00	-	60.0	-	60.0	60.0	-	-
03/04/16 17:00	3	60.0	54.9	58.5	60.0	-	-
03/04/16 18:00	8	62.7	60.2	59.3	62.7	-	-
03/04/16 19:00	6	68.0	65.8	64.3	-	68.0	-
03/04/16 20:00	1	65.9	61.1	64.2	-	65.9	-
03/04/16 21:00	2	64.5	56.3	63.8	-	64.5	-
03/04/16 22:00	2	65.1	61.5	62.8	-	65.1	-
03/04/16 23:00	3	73.4	72.5	66.5	-	-	73.4
	<b>59</b>	<b>66.9</b>	<b>64.3</b>	<b>65.0</b>	<b>60.7</b>	<b>66.1</b>	<b>70.4</b>

Location: Gare centrale NMT # 5

