

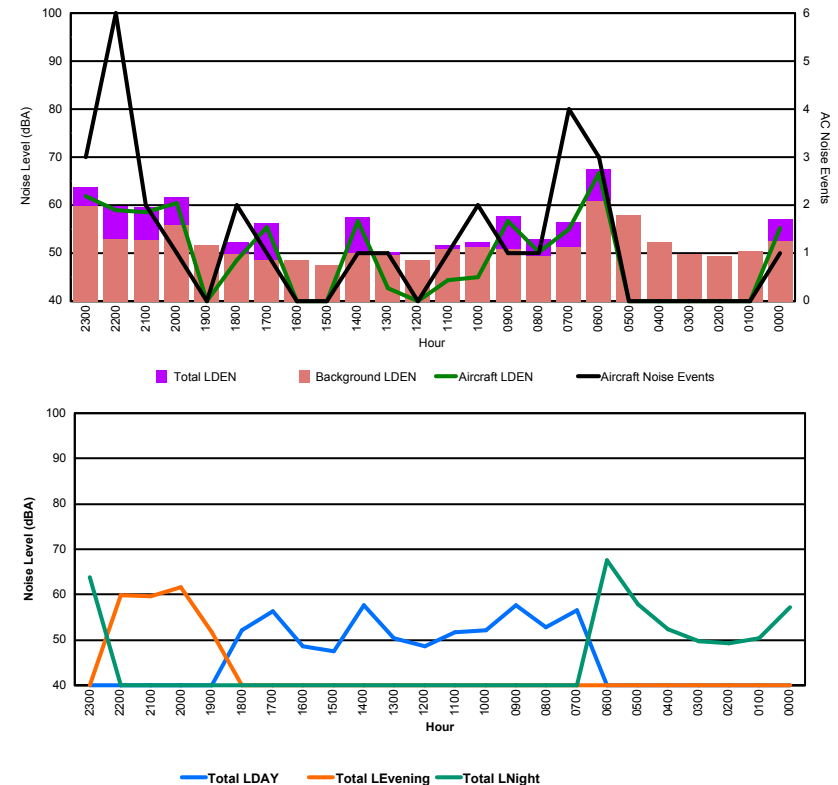


## Luxembourg Airport Noise Distribution by Hour

Between 21/03/2016 00:00:00 and 21/03/2016 23:59:59 (Local Time)

Day	Aircraft Events	Total LDEN dB (A)	Aircraft LDEN dB(A)	Background LDEN dB(A)	Total LDay dB(A)	Total LEvening dB(A)	Total LNight dB (A)
21/03/16 0:00	1	57.1	55.3	52.6	-	-	57.1
21/03/16 1:00	-	50.3	-	50.4	-	-	50.3
21/03/16 2:00	-	49.3	-	49.3	-	-	49.3
21/03/16 3:00	-	49.7	-	49.7	-	-	49.7
21/03/16 4:00	-	52.3	-	52.3	-	-	52.3
21/03/16 5:00	-	57.9	-	57.9	-	-	57.9
21/03/16 6:00	3	67.6	66.6	60.9	-	-	67.6
21/03/16 7:00	4	56.5	55.0	51.3	56.5	-	-
21/03/16 8:00	1	52.9	50.2	49.4	52.9	-	-
21/03/16 9:00	1	57.7	56.7	50.9	57.7	-	-
21/03/16 10:00	2	52.2	45.1	51.2	52.2	-	-
21/03/16 11:00	1	51.7	44.3	50.8	51.7	-	-
21/03/16 12:00	-	48.5	-	48.5	48.5	-	-
21/03/16 13:00	1	50.3	42.7	49.5	50.3	-	-
21/03/16 14:00	1	57.6	56.7	49.9	57.6	-	-
21/03/16 15:00	-	47.6	-	47.6	47.6	-	-
21/03/16 16:00	-	48.5	-	48.5	48.5	-	-
21/03/16 17:00	1	56.3	55.5	48.5	56.3	-	-
21/03/16 18:00	2	52.2	48.5	49.8	52.2	-	-
21/03/16 19:00	-	51.7	-	51.7	-	51.7	-
21/03/16 20:00	1	61.7	60.4	55.8	-	61.7	-
21/03/16 21:00	2	59.6	58.5	52.8	-	59.6	-
21/03/16 22:00	6	59.8	58.9	52.9	-	59.8	-
21/03/16 23:00	3	63.8	61.8	59.7	-	-	63.8
	<b>30</b>	<b>58.3</b>	<b>58.6</b>	<b>53.6</b>	<b>54.0</b>	<b>59.4</b>	<b>60.9</b>

Location: Roodt/Syr NMT # 1



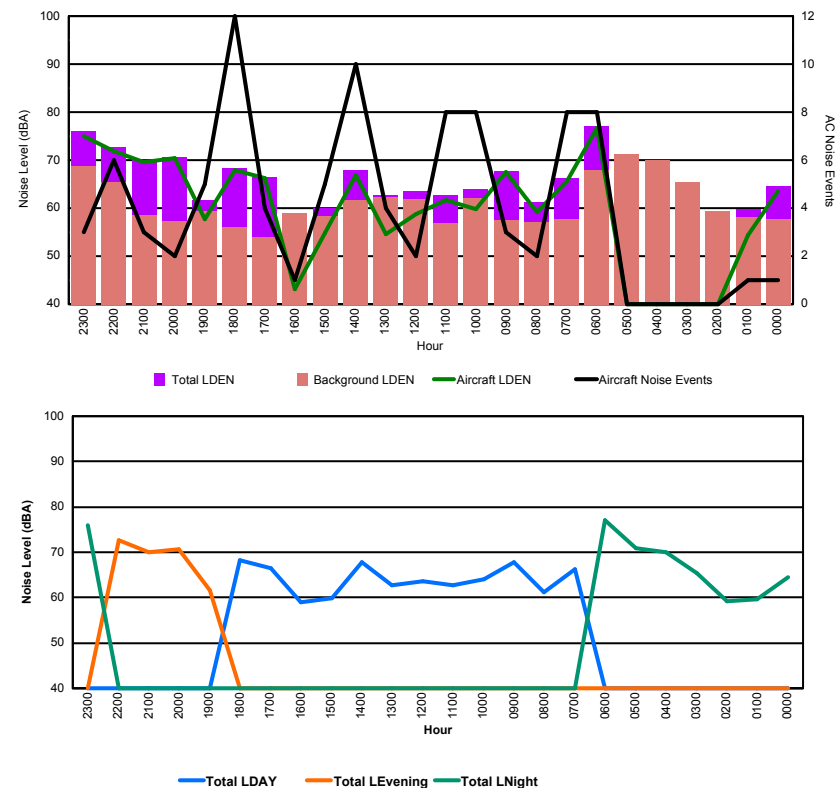


## Luxembourg Airport Noise Distribution by Hour

Between 21/03/2016 00:00:00 and 21/03/2016 23:59:59 (Local Time)

Day	Aircraft Events	Total LDEN dB (A)	Aircraft LDEN dB(A)	Background LDEN dB(A)	Total LDay dB(A)	Total LEvening dB(A)	Total LNight dB (A)
21/03/16 0:00	1	64.6	63.5	57.7	-	-	64.6
21/03/16 1:00	1	59.7	54.4	58.2	-	-	59.7
21/03/16 2:00	-	59.3	-	59.4	-	-	59.3
21/03/16 3:00	-	65.4	-	65.4	-	-	65.4
21/03/16 4:00	-	69.9	-	70.0	-	-	69.9
21/03/16 5:00	-	70.9	-	71.2	-	-	70.9
21/03/16 6:00	8	77.1	76.6	67.9	-	-	77.1
21/03/16 7:00	8	66.2	65.6	57.8	66.2	-	-
21/03/16 8:00	2	61.2	59.2	57.1	61.2	-	-
21/03/16 9:00	3	67.8	67.4	57.6	67.8	-	-
21/03/16 10:00	8	64.0	59.8	62.1	64.0	-	-
21/03/16 11:00	8	62.8	61.7	56.8	62.8	-	-
21/03/16 12:00	2	63.5	58.8	61.8	63.5	-	-
21/03/16 13:00	4	62.8	54.5	62.3	62.8	-	-
21/03/16 14:00	10	67.9	66.8	61.7	67.9	-	-
21/03/16 15:00	5	59.9	54.7	58.4	59.9	-	-
21/03/16 16:00	1	59.0	43.1	58.9	59.0	-	-
21/03/16 17:00	4	66.4	66.2	53.9	66.4	-	-
21/03/16 18:00	12	68.3	68.0	56.1	68.3	-	-
21/03/16 19:00	5	61.6	57.7	59.4	-	61.6	-
21/03/16 20:00	2	70.7	70.5	57.3	-	70.7	-
21/03/16 21:00	3	70.0	69.6	58.6	-	70.0	-
21/03/16 22:00	6	72.7	71.9	65.4	-	72.7	-
21/03/16 23:00	3	76.0	75.1	68.8	-	-	76.0
	<b>96</b>	<b>69.3</b>	<b>68.6</b>	<b>63.9</b>	<b>65.1</b>	<b>70.2</b>	<b>71.8</b>

Location: DVOR NMT # 2



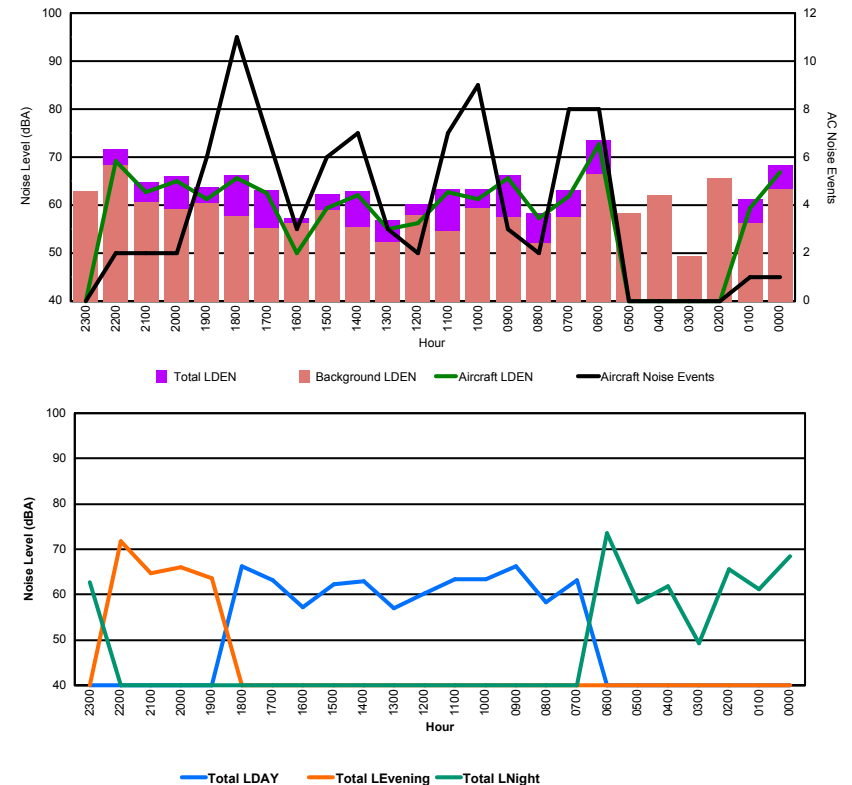


## Luxembourg Airport Noise Distribution by Hour

Between 21/03/2016 00:00:00 and 21/03/2016 23:59:59 (Local Time)

Day	Aircraft Events	Total LDEN dB (A)	Aircraft LDEN dB(A)	Background LDEN dB(A)	Total LDay dB(A)	Total LEvening dB(A)	Total LNight dB (A)
21/03/16 0:00	1	68.4	66.8	63.4	-	-	68.4
21/03/16 1:00	1	61.2	59.3	56.2	-	-	61.2
21/03/16 2:00	-	65.7	-	65.7	-	-	65.7
21/03/16 3:00	-	49.3	-	49.3	-	-	49.3
21/03/16 4:00	-	61.9	-	62.0	-	-	61.9
21/03/16 5:00	-	58.3	-	58.4	-	-	58.3
21/03/16 6:00	8	73.5	72.7	66.4	-	-	73.5
21/03/16 7:00	8	63.2	61.9	57.5	63.2	-	-
21/03/16 8:00	2	58.3	57.2	52.0	58.3	-	-
21/03/16 9:00	3	66.3	65.7	57.4	66.3	-	-
21/03/16 10:00	9	63.4	61.3	59.4	63.4	-	-
21/03/16 11:00	7	63.3	62.7	54.5	63.3	-	-
21/03/16 12:00	2	60.2	56.3	58.0	60.2	-	-
21/03/16 13:00	3	56.9	55.0	52.3	56.9	-	-
21/03/16 14:00	7	62.9	62.0	55.4	62.9	-	-
21/03/16 15:00	6	62.2	59.3	59.0	62.2	-	-
21/03/16 16:00	3	57.3	50.1	56.3	57.3	-	-
21/03/16 17:00	7	63.2	62.5	55.2	63.2	-	-
21/03/16 18:00	11	66.3	65.7	57.7	66.3	-	-
21/03/16 19:00	6	63.7	61.2	60.4	-	63.7	-
21/03/16 20:00	2	66.1	65.0	59.1	-	66.1	-
21/03/16 21:00	2	64.8	62.8	60.7	-	64.8	-
21/03/16 22:00	2	71.7	69.1	68.3	-	71.7	-
21/03/16 23:00	-	62.8	-	62.9	-	-	62.8
	<b>90</b>	<b>65.6</b>	<b>64.7</b>	<b>61.0</b>	<b>62.9</b>	<b>67.8</b>	<b>66.8</b>

Location: Mid Runway NMT # 3



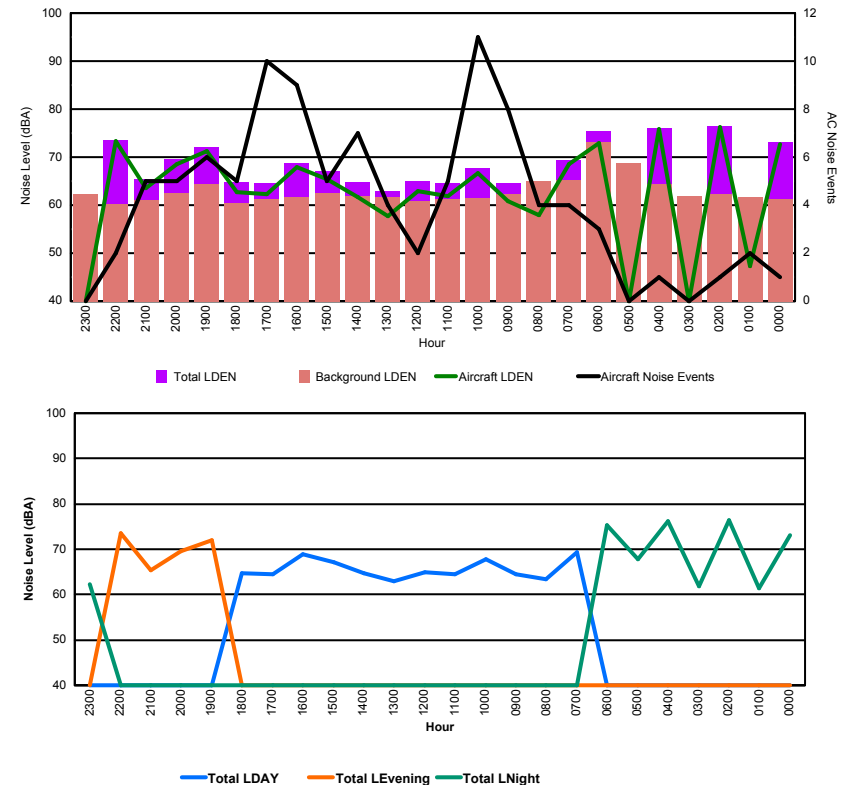


## Luxembourg Airport Noise Distribution by Hour

Between 21/03/2016 00:00:00 and 21/03/2016 23:59:59 (Local Time)

Day	Aircraft Events	Total LDEN dB (A)	Aircraft LDEN dB(A)	Background LDEN dB(A)	Total LDay dB(A)	Total LEvening dB(A)	Total LNight dB (A)
21/03/16 0:00	1	73.1	72.8	61.3	-	-	73.1
21/03/16 1:00	2	61.4	47.3	61.6	-	-	61.4
21/03/16 2:00	1	76.5	76.3	62.3	-	-	76.5
21/03/16 3:00	-	61.8	-	61.9	-	-	61.8
21/03/16 4:00	1	76.1	75.8	64.3	-	-	76.1
21/03/16 5:00	-	67.8	-	68.8	-	-	67.8
21/03/16 6:00	3	75.4	73.0	73.2	-	-	75.4
21/03/16 7:00	4	69.3	68.5	65.3	69.3	-	-
21/03/16 8:00	4	63.3	58.0	65.1	63.3	-	-
21/03/16 9:00	8	64.5	60.9	62.3	64.5	-	-
21/03/16 10:00	11	67.8	66.7	61.5	67.8	-	-
21/03/16 11:00	5	64.5	61.9	61.3	64.5	-	-
21/03/16 12:00	2	65.0	62.9	60.8	65.0	-	-
21/03/16 13:00	4	63.0	57.7	61.7	63.0	-	-
21/03/16 14:00	7	64.7	61.7	61.9	64.7	-	-
21/03/16 15:00	5	67.1	65.4	62.6	67.1	-	-
21/03/16 16:00	9	68.8	68.0	61.6	68.8	-	-
21/03/16 17:00	10	64.6	62.2	61.2	64.6	-	-
21/03/16 18:00	5	64.7	62.7	60.5	64.7	-	-
21/03/16 19:00	6	72.1	71.3	64.3	-	72.1	-
21/03/16 20:00	5	69.6	68.6	62.5	-	69.6	-
21/03/16 21:00	5	65.4	63.5	61.0	-	65.4	-
21/03/16 22:00	2	73.5	73.4	60.3	-	73.5	-
21/03/16 23:00	-	62.2	-	62.2	-	-	62.2
	100	70.2	69.7	64.4	66.1	71.1	72.8

Location: NDB-Hamm NMT # 4





## Luxembourg Airport Noise Distribution by Hour

Between 21/03/2016 00:00:00 and 21/03/2016 23:59:59 (Local Time)

Day	Aircraft Events	Total LDEN dB (A)	Aircraft LDEN dB(A)	Background LDEN dB(A)	Total LDay dB(A)	Total LEvening dB(A)	Total LNight dB (A)
21/03/16 0:00	2	67.1	64.8	64.2	-	-	67.1
21/03/16 1:00	-	62.6	-	63.0	-	-	62.6
21/03/16 2:00	1	68.5	67.4	62.0	-	-	68.5
21/03/16 3:00	-	61.2	-	61.2	-	-	61.2
21/03/16 4:00	1	69.3	67.9	63.6	-	-	69.3
21/03/16 5:00	-	70.0	-	69.6	-	-	70.0
21/03/16 6:00	1	74.1	67.0	75.0	-	-	74.1
21/03/16 7:00	2	64.6	60.5	64.6	64.6	-	-
21/03/16 8:00	2	63.2	53.2	66.0	63.2	-	-
21/03/16 9:00	8	62.4	55.4	61.7	62.4	-	-
21/03/16 10:00	14	63.9	59.9	62.2	63.9	-	-
21/03/16 11:00	9	62.8	57.0	61.8	62.8	-	-
21/03/16 12:00	2	62.2	55.6	61.3	62.2	-	-
21/03/16 13:00	4	62.0	53.7	61.5	62.0	-	-
21/03/16 14:00	4	62.8	55.8	62.0	62.8	-	-
21/03/16 15:00	4	63.3	58.9	61.4	63.3	-	-
21/03/16 16:00	8	64.3	60.9	62.0	64.3	-	-
21/03/16 17:00	8	62.0	55.6	61.1	62.0	-	-
21/03/16 18:00	7	61.9	56.9	60.5	61.9	-	-
21/03/16 19:00	6	68.0	63.9	66.1	-	68.0	-
21/03/16 20:00	5	68.0	62.5	66.7	-	68.0	-
21/03/16 21:00	5	67.0	59.7	66.3	-	67.0	-
21/03/16 22:00	2	67.0	65.1	62.6	-	67.0	-
21/03/16 23:00	-	68.6	-	68.6	-	-	68.6
	<b>95</b>	<b>66.8</b>	<b>62.4</b>	<b>65.9</b>	<b>63.0</b>	<b>67.5</b>	<b>69.2</b>

Location: Gare centrale NMT # 5

