

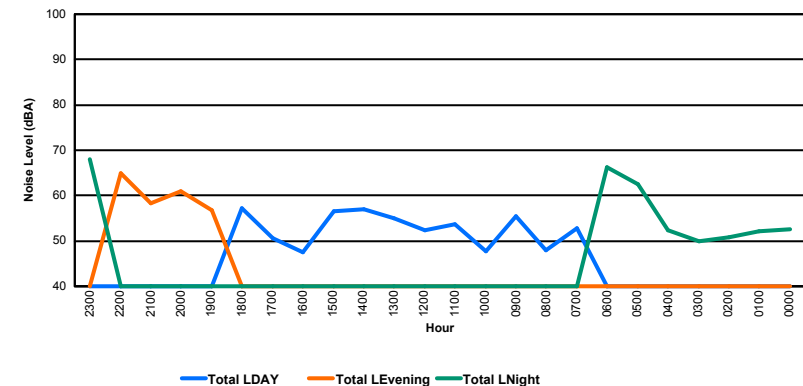
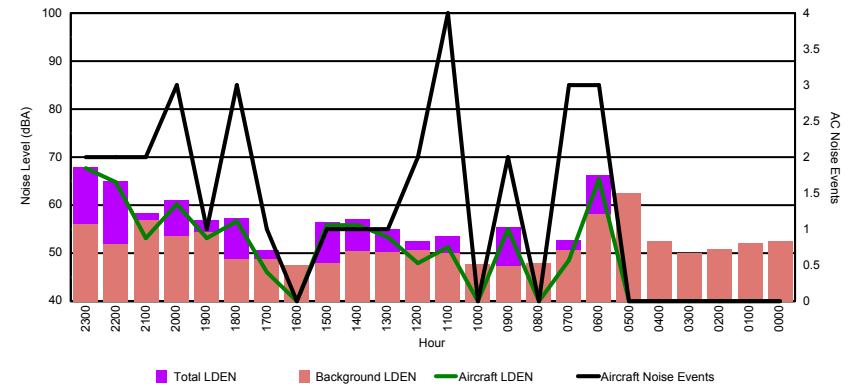


Luxembourg Airport Noise Distribution by Hour

Between 17/03/2016 00:00:00 and 17/03/2016 23:59:59 (Local Time)

Day	Aircraft Events	Total LDEN dB (A)	Aircraft LDEN dB(A)	Background LDEN dB(A)	Total LDay dB(A)	Total LEvening dB(A)	Total LNight dB (A)
17/03/16 0:00	-	52.6	-	52.6	-	-	52.6
17/03/16 1:00	-	52.1	-	52.1	-	-	52.1
17/03/16 2:00	-	50.9	-	50.9	-	-	50.9
17/03/16 3:00	-	50.0	-	50.0	-	-	50.0
17/03/16 4:00	-	52.4	-	52.4	-	-	52.4
17/03/16 5:00	-	62.4	-	62.4	-	-	62.4
17/03/16 6:00	3	66.2	65.5	58.2	-	-	66.2
17/03/16 7:00	3	52.7	48.6	50.7	52.7	-	-
17/03/16 8:00	-	47.9	-	47.9	47.9	-	-
17/03/16 9:00	2	55.5	54.9	47.3	55.5	-	-
17/03/16 10:00	-	47.8	-	47.8	47.8	-	-
17/03/16 11:00	4	53.6	51.2	50.1	53.6	-	-
17/03/16 12:00	2	52.4	47.9	50.7	52.4	-	-
17/03/16 13:00	1	55.0	53.3	50.3	55.0	-	-
17/03/16 14:00	1	57.0	55.8	50.5	57.0	-	-
17/03/16 15:00	1	56.5	55.8	48.0	56.5	-	-
17/03/16 16:00	-	47.6	-	47.6	47.6	-	-
17/03/16 17:00	1	50.6	46.0	48.8	50.6	-	-
17/03/16 18:00	3	57.3	56.7	48.8	57.3	-	-
17/03/16 19:00	1	56.8	53.1	54.3	-	56.8	-
17/03/16 20:00	3	61.0	60.2	53.5	-	61.0	-
17/03/16 21:00	2	58.3	53.2	56.9	-	58.3	-
17/03/16 22:00	2	64.9	64.7	51.8	-	64.9	-
17/03/16 23:00	2	68.0	67.7	56.0	-	-	68.0
	31	59.5	60.3	53.7	54.0	61.4	62.1

Location: Roodt/Syr NMT # 1



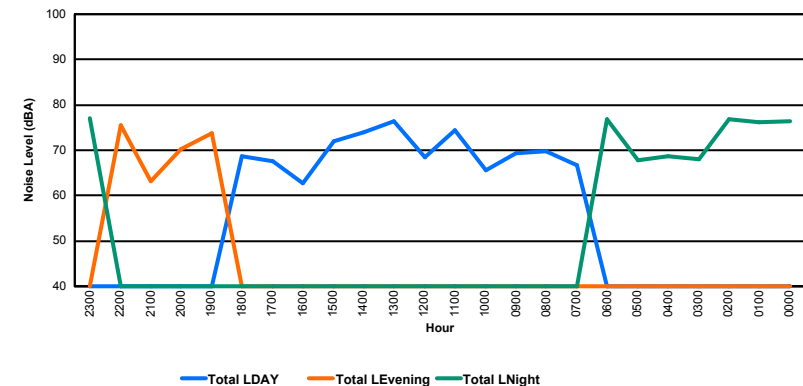
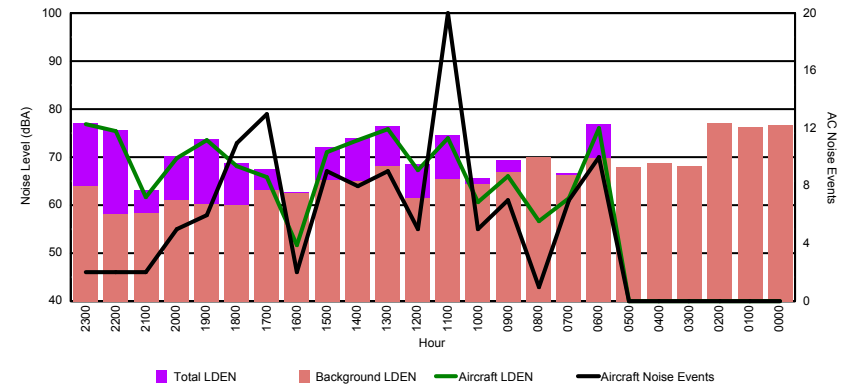


Luxembourg Airport Noise Distribution by Hour

Between 17/03/2016 00:00:00 and 17/03/2016 23:59:59 (Local Time)

Day	Aircraft Events	Total LDEN dB (A)	Aircraft LDEN dB(A)	Background LDEN dB(A)	Total LDay dB(A)	Total LEvening dB(A)	Total LNight dB (A)
17/03/16 0:00	-	76.5	-	76.7	-	-	76.5
17/03/16 1:00	-	76.1	-	76.3	-	-	76.1
17/03/16 2:00	-	76.9	-	77.1	-	-	76.9
17/03/16 3:00	-	68.1	-	68.2	-	-	68.1
17/03/16 4:00	-	68.7	-	68.8	-	-	68.7
17/03/16 5:00	-	67.8	-	67.9	-	-	67.8
17/03/16 6:00	10	76.8	76.0	69.8	-	-	76.8
17/03/16 7:00	7	66.6	61.4	66.2	66.6	-	-
17/03/16 8:00	1	69.7	56.6	69.9	69.7	-	-
17/03/16 9:00	7	69.4	66.1	66.9	69.4	-	-
17/03/16 10:00	5	65.7	60.6	64.3	65.7	-	-
17/03/16 11:00	20	74.5	73.9	65.4	74.5	-	-
17/03/16 12:00	5	68.5	67.3	61.4	68.5	-	-
17/03/16 13:00	9	76.5	75.9	68.2	76.5	-	-
17/03/16 14:00	8	74.0	73.5	65.0	74.0	-	-
17/03/16 15:00	9	72.0	71.1	65.3	72.0	-	-
17/03/16 16:00	2	62.7	51.6	62.5	62.7	-	-
17/03/16 17:00	13	67.6	65.8	63.2	67.6	-	-
17/03/16 18:00	11	68.7	68.1	60.1	68.7	-	-
17/03/16 19:00	6	73.7	73.6	60.2	-	73.7	-
17/03/16 20:00	5	70.3	69.8	61.0	-	70.3	-
17/03/16 21:00	2	63.2	61.6	58.3	-	63.2	-
17/03/16 22:00	2	75.6	75.5	58.1	-	75.6	-
17/03/16 23:00	2	77.0	76.8	64.0	-	-	77.0
	124	73.1	71.9	69.6	71.3	72.6	75.0

Location: DVOR NMT # 2



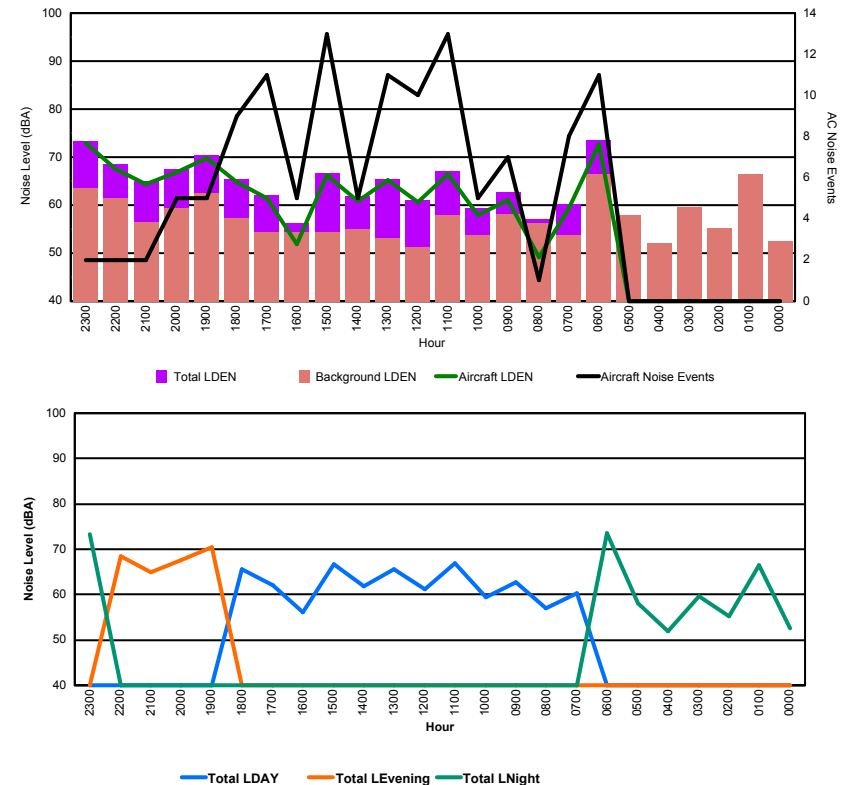


Luxembourg Airport Noise Distribution by Hour

Between 17/03/2016 00:00:00 and 17/03/2016 23:59:59 (Local Time)

Day	Aircraft Events	Total LDEN dB (A)	Aircraft LDEN dB(A)	Background LDEN dB(A)	Total LDay dB(A)	Total LEvening dB(A)	Total LNight dB (A)
17/03/16 0:00	-	52.5	-	52.5	-	-	52.5
17/03/16 1:00	-	66.4	-	66.4	-	-	66.4
17/03/16 2:00	-	55.2	-	55.2	-	-	55.2
17/03/16 3:00	-	59.6	-	59.6	-	-	59.6
17/03/16 4:00	-	52.0	-	52.0	-	-	52.0
17/03/16 5:00	-	58.0	-	58.0	-	-	58.0
17/03/16 6:00	11	73.5	72.7	66.4	-	-	73.5
17/03/16 7:00	8	60.3	59.3	53.7	60.3	-	-
17/03/16 8:00	1	57.0	49.2	56.2	57.0	-	-
17/03/16 9:00	7	62.8	61.1	58.1	62.8	-	-
17/03/16 10:00	5	59.4	58.0	53.8	59.4	-	-
17/03/16 11:00	13	67.0	66.5	58.0	67.0	-	-
17/03/16 12:00	10	61.1	60.7	51.3	61.1	-	-
17/03/16 13:00	11	65.5	65.3	53.1	65.5	-	-
17/03/16 14:00	5	61.8	60.8	55.1	61.8	-	-
17/03/16 15:00	13	66.6	66.3	54.3	66.6	-	-
17/03/16 16:00	5	56.2	51.8	54.3	56.2	-	-
17/03/16 17:00	11	62.1	61.4	54.3	62.1	-	-
17/03/16 18:00	9	65.5	64.8	57.2	65.5	-	-
17/03/16 19:00	5	70.4	69.7	62.4	-	70.4	-
17/03/16 20:00	5	67.6	66.9	59.4	-	67.6	-
17/03/16 21:00	2	64.9	64.3	56.4	-	64.9	-
17/03/16 22:00	2	68.5	67.6	61.5	-	68.5	-
17/03/16 23:00	2	73.4	72.9	63.5	-	-	73.4
	125	66.4	66.6	59.6	63.3	68.3	68.0

Location: Mid Runway NMT # 3



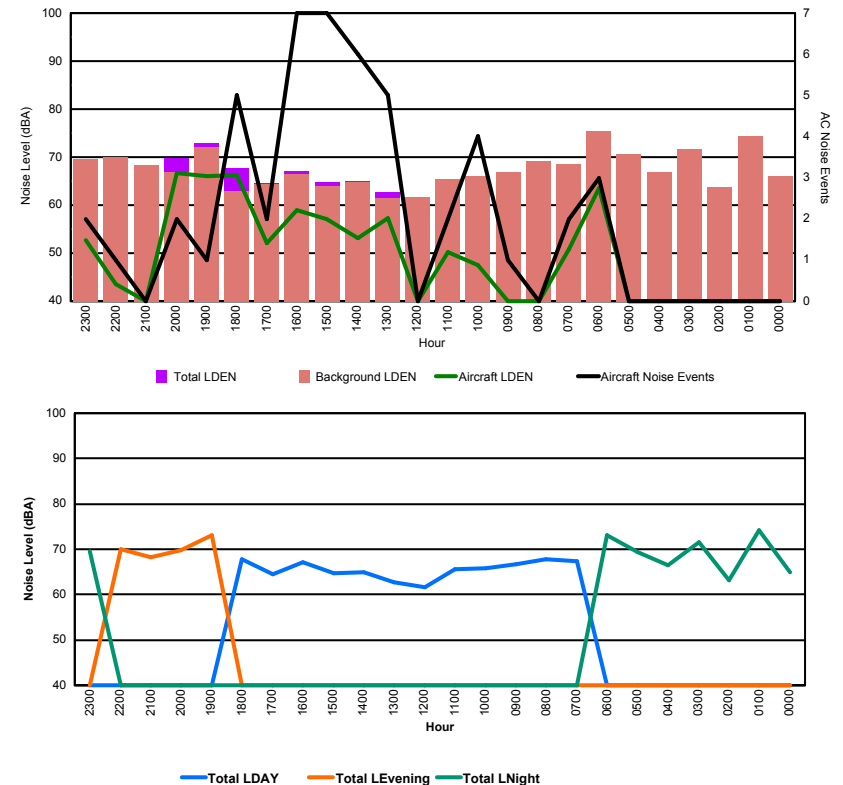


Luxembourg Airport Noise Distribution by Hour

Between 17/03/2016 00:00:00 and 17/03/2016 23:59:59 (Local Time)

Day	Aircraft Events	Total LDEN dB (A)	Aircraft LDEN dB(A)	Background LDEN dB(A)	Total LDay dB(A)	Total LEvening dB(A)	Total LNight dB (A)
17/03/16 0:00	-	65.0	-	66.0	-	-	65.0
17/03/16 1:00	-	74.2	-	74.3	-	-	74.2
17/03/16 2:00	-	63.2	-	63.7	-	-	63.2
17/03/16 3:00	-	71.6	-	71.7	-	-	71.6
17/03/16 4:00	-	66.4	-	66.9	-	-	66.4
17/03/16 5:00	-	69.3	-	70.6	-	-	69.3
17/03/16 6:00	3	73.1	63.6	75.5	-	-	73.1
17/03/16 7:00	2	67.4	50.9	68.5	67.4	-	-
17/03/16 8:00	-	67.9	-	69.1	67.9	-	-
17/03/16 9:00	1	66.8	37.4	66.9	66.8	-	-
17/03/16 10:00	4	65.9	47.5	66.0	65.9	-	-
17/03/16 11:00	2	65.5	50.3	65.4	65.5	-	-
17/03/16 12:00	-	61.6	-	61.6	61.6	-	-
17/03/16 13:00	5	62.8	57.2	61.5	62.8	-	-
17/03/16 14:00	6	65.0	53.1	64.8	65.0	-	-
17/03/16 15:00	7	64.7	57.1	64.0	64.7	-	-
17/03/16 16:00	7	67.1	59.0	66.5	67.1	-	-
17/03/16 17:00	2	64.5	52.1	64.4	64.5	-	-
17/03/16 18:00	5	67.8	66.2	62.9	67.8	-	-
17/03/16 19:00	1	73.0	66.0	72.1	-	73.0	-
17/03/16 20:00	2	69.7	66.6	66.8	-	69.7	-
17/03/16 21:00	-	68.3	-	68.4	-	68.3	-
17/03/16 22:00	1	70.0	43.5	70.1	-	70.0	-
17/03/16 23:00	2	69.6	52.8	69.6	-	-	69.6
	50	68.8	60.7	69.0	66.0	70.6	70.4

Location: NDB-Hamm NMT # 4





Luxembourg Airport Noise Distribution by Hour

Between 17/03/2016 00:00:00 and 17/03/2016 23:59:59 (Local Time)

Day	Aircraft Events	Total LDEN dB (A)	Aircraft LDEN dB(A)	Background LDEN dB(A)	Total LDay dB(A)	Total LEvening dB(A)	Total LNight dB (A)
17/03/16 0:00	-	65.2	-	66.4	-	-	65.2
17/03/16 1:00	1	68.3	66.4	64.6	-	-	68.3
17/03/16 2:00	-	62.4	-	62.6	-	-	62.4
17/03/16 3:00	1	67.0	65.4	62.0	-	-	67.0
17/03/16 4:00	-	63.9	-	64.0	-	-	63.9
17/03/16 5:00	-	70.4	-	71.8	-	-	70.4
17/03/16 6:00	-	75.1	-	76.9	-	-	75.1
17/03/16 7:00	-	64.0	-	67.1	64.0	-	-
17/03/16 8:00	2	64.1	58.1	65.9	64.1	-	-
17/03/16 9:00	14	64.9	60.3	63.6	64.9	-	-
17/03/16 10:00	14	64.1	58.9	63.2	64.1	-	-
17/03/16 11:00	5	65.5	58.4	64.9	65.5	-	-
17/03/16 12:00	3	62.0	51.7	61.7	62.0	-	-
17/03/16 13:00	4	62.7	51.7	62.7	62.7	-	-
17/03/16 14:00	5	63.7	56.2	63.4	63.7	-	-
17/03/16 15:00	11	63.4	58.2	62.3	63.4	-	-
17/03/16 16:00	15	63.8	59.0	62.4	63.8	-	-
17/03/16 17:00	9	63.6	56.3	63.0	63.6	-	-
17/03/16 18:00	9	64.1	59.3	62.6	64.1	-	-
17/03/16 19:00	9	68.6	65.4	66.0	-	68.6	-
17/03/16 20:00	4	66.9	61.1	65.8	-	66.9	-
17/03/16 21:00	8	66.8	62.4	65.2	-	66.8	-
17/03/16 22:00	6	68.5	67.1	63.1	-	68.5	-
17/03/16 23:00	1	67.4	58.8	66.7	-	-	67.4
	121	67.0	61.7	67.1	63.9	67.8	69.3

Location: Gare centrale NMT # 5

