

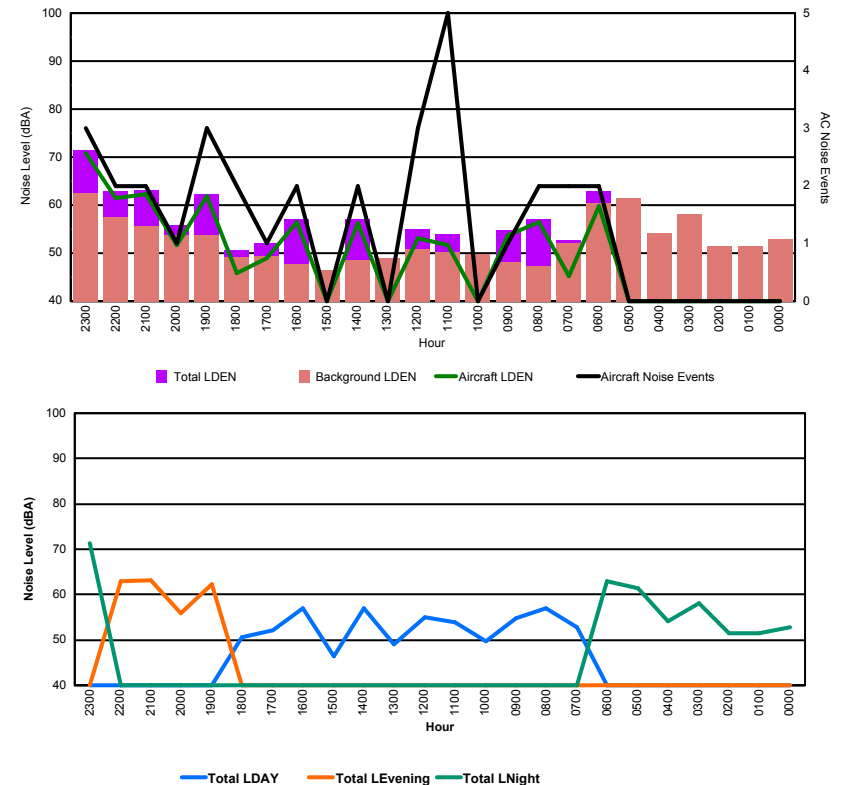


## Luxembourg Airport Noise Distribution by Hour

Between 10/03/2016 00:00:00 and 10/03/2016 23:59:59 (Local Time)

Day	Aircraft Events	Total LDEN dB (A)	Aircraft LDEN dB(A)	Background LDEN dB(A)	Total LDay dB(A)	Total LEvening dB(A)	Total LNight dB (A)
10/03/16 0:00	-	52.9	-	53.0	-	-	52.9
10/03/16 1:00	-	51.4	-	51.4	-	-	51.4
10/03/16 2:00	-	51.5	-	51.5	-	-	51.5
10/03/16 3:00	-	58.1	-	58.1	-	-	58.1
10/03/16 4:00	-	54.1	-	54.2	-	-	54.1
10/03/16 5:00	-	61.4	-	61.4	-	-	61.4
10/03/16 6:00	2	63.0	59.7	60.5	-	-	63.0
10/03/16 7:00	2	52.8	45.2	52.1	52.8	-	-
10/03/16 8:00	2	57.0	56.5	47.3	57.0	-	-
10/03/16 9:00	1	54.8	53.8	48.2	54.8	-	-
10/03/16 10:00	-	49.8	-	49.8	49.8	-	-
10/03/16 11:00	5	53.9	51.7	50.2	53.9	-	-
10/03/16 12:00	3	55.1	53.1	50.9	55.1	-	-
10/03/16 13:00	-	49.0	-	49.0	49.0	-	-
10/03/16 14:00	2	57.0	56.3	48.6	57.0	-	-
10/03/16 15:00	-	46.4	-	46.4	46.4	-	-
10/03/16 16:00	2	57.0	56.5	47.8	57.0	-	-
10/03/16 17:00	1	52.1	48.9	49.3	52.1	-	-
10/03/16 18:00	2	50.7	45.9	49.1	50.7	-	-
10/03/16 19:00	3	62.3	61.8	53.7	-	62.3	-
10/03/16 20:00	1	55.8	51.6	53.8	-	55.8	-
10/03/16 21:00	2	63.1	62.3	55.7	-	63.1	-
10/03/16 22:00	2	62.9	61.4	57.5	-	62.9	-
10/03/16 23:00	3	71.4	70.8	62.6	-	-	71.4
	<b>33</b>	<b>60.6</b>	<b>61.2</b>	<b>55.3</b>	<b>54.1</b>	<b>61.8</b>	<b>63.7</b>

Location: Roodt/Syr NMT # 1



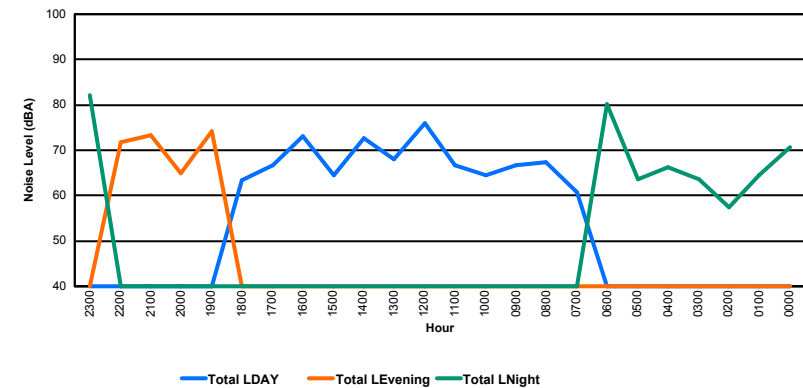
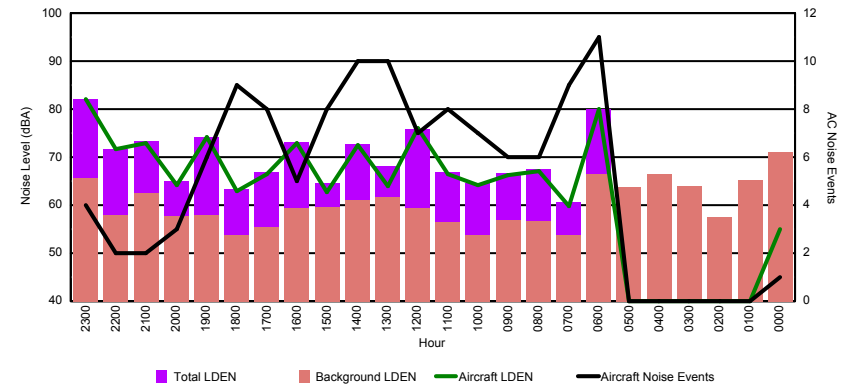


## Luxembourg Airport Noise Distribution by Hour

Between 10/03/2016 00:00:00 and 10/03/2016 23:59:59 (Local Time)

Day	Aircraft Events	Total LDEN dB (A)	Aircraft LDEN dB(A)	Background LDEN dB(A)	Total LDay dB(A)	Total LEvening dB(A)	Total LNight dB (A)
10/03/16 0:00	1	70.7	55.1	71.1	-	-	70.7
10/03/16 1:00	-	64.6	-	65.3	-	-	64.6
10/03/16 2:00	-	57.4	-	57.4	-	-	57.4
10/03/16 3:00	-	63.7	-	63.9	-	-	63.7
10/03/16 4:00	-	66.3	-	66.5	-	-	66.3
10/03/16 5:00	-	63.6	-	63.7	-	-	63.6
10/03/16 6:00	11	80.1	79.9	66.5	-	-	80.1
10/03/16 7:00	9	60.7	59.8	53.8	60.7	-	-
10/03/16 8:00	6	67.4	67.1	56.6	67.4	-	-
10/03/16 9:00	6	66.6	66.2	56.8	66.6	-	-
10/03/16 10:00	7	64.6	64.2	53.8	64.6	-	-
10/03/16 11:00	8	66.8	66.4	56.5	66.8	-	-
10/03/16 12:00	7	75.9	76.1	59.3	75.9	-	-
10/03/16 13:00	10	68.1	63.9	61.6	68.1	-	-
10/03/16 14:00	10	72.7	72.4	61.0	72.7	-	-
10/03/16 15:00	8	64.5	62.8	59.6	64.5	-	-
10/03/16 16:00	5	73.1	72.9	59.4	73.1	-	-
10/03/16 17:00	8	66.8	66.5	55.5	66.8	-	-
10/03/16 18:00	9	63.3	62.9	53.7	63.3	-	-
10/03/16 19:00	6	74.2	74.1	58.0	-	74.2	-
10/03/16 20:00	3	65.0	64.2	57.7	-	65.0	-
10/03/16 21:00	2	73.4	73.0	62.4	-	73.4	-
10/03/16 22:00	2	71.7	71.6	58.0	-	71.7	-
10/03/16 23:00	4	82.1	82.0	65.7	-	-	82.1
	<b>122</b>	<b>72.9</b>	<b>73.5</b>	<b>62.8</b>	<b>69.7</b>	<b>72.2</b>	<b>75.6</b>

Location: DVOR NMT # 2



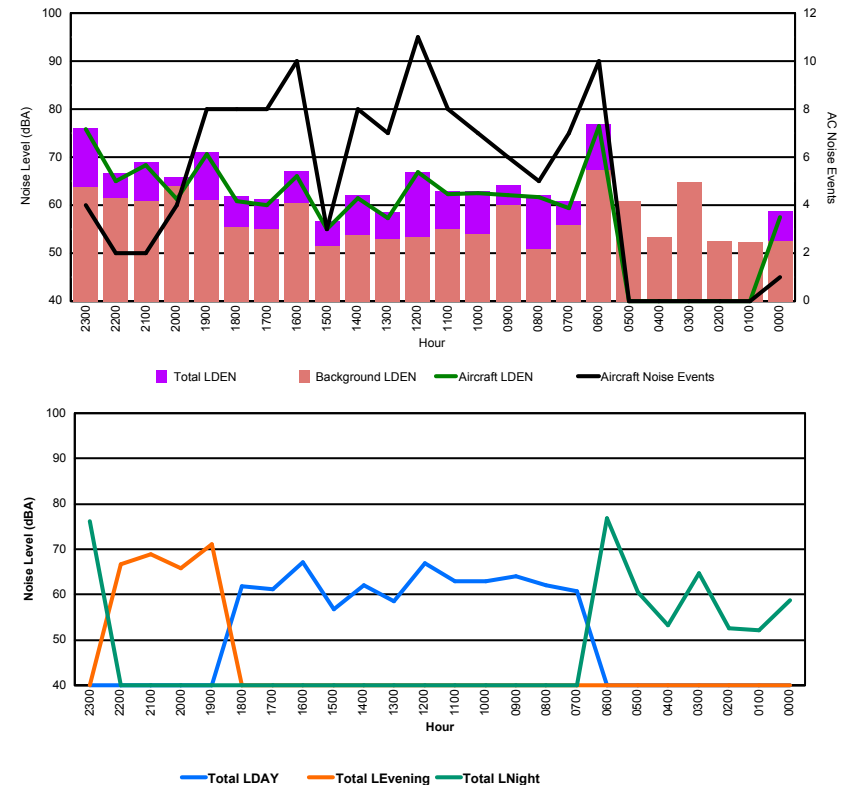


## Luxembourg Airport Noise Distribution by Hour

Between 10/03/2016 00:00:00 and 10/03/2016 23:59:59 (Local Time)

Day	Aircraft Events	Total LDEN dB (A)	Aircraft LDEN dB(A)	Background LDEN dB(A)	Total LDay dB(A)	Total LEvening dB(A)	Total LNight dB (A)
10/03/16 0:00	1	58.7	57.5	52.6	-	-	58.7
10/03/16 1:00	-	52.2	-	52.2	-	-	52.2
10/03/16 2:00	-	52.5	-	52.5	-	-	52.5
10/03/16 3:00	-	64.7	-	64.7	-	-	64.7
10/03/16 4:00	-	53.3	-	53.3	-	-	53.3
10/03/16 5:00	-	60.6	-	60.8	-	-	60.6
10/03/16 6:00	10	76.9	76.5	67.3	-	-	76.9
10/03/16 7:00	7	60.8	59.3	55.9	60.8	-	-
10/03/16 8:00	5	62.0	61.6	50.9	62.0	-	-
10/03/16 9:00	6	64.1	62.0	60.1	64.1	-	-
10/03/16 10:00	7	63.0	62.5	53.9	63.0	-	-
10/03/16 11:00	8	63.0	62.3	55.0	63.0	-	-
10/03/16 12:00	11	66.9	66.8	53.3	66.9	-	-
10/03/16 13:00	7	58.5	57.2	52.9	58.5	-	-
10/03/16 14:00	8	62.1	61.4	53.7	62.1	-	-
10/03/16 15:00	3	56.7	55.1	51.5	56.7	-	-
10/03/16 16:00	10	67.1	66.0	60.5	67.1	-	-
10/03/16 17:00	8	61.2	60.1	55.0	61.2	-	-
10/03/16 18:00	8	61.9	60.9	55.4	61.9	-	-
10/03/16 19:00	8	71.1	70.7	61.0	-	71.1	-
10/03/16 20:00	4	65.8	61.3	63.9	-	65.8	-
10/03/16 21:00	2	69.0	68.3	60.8	-	69.0	-
10/03/16 22:00	2	66.6	65.1	61.4	-	66.6	-
10/03/16 23:00	4	76.1	75.8	63.7	-	-	76.1
	<b>119</b>	<b>67.9</b>	<b>68.2</b>	<b>59.9</b>	<b>63.2</b>	<b>68.6</b>	<b>70.8</b>

Location: Mid Runway NMT # 3



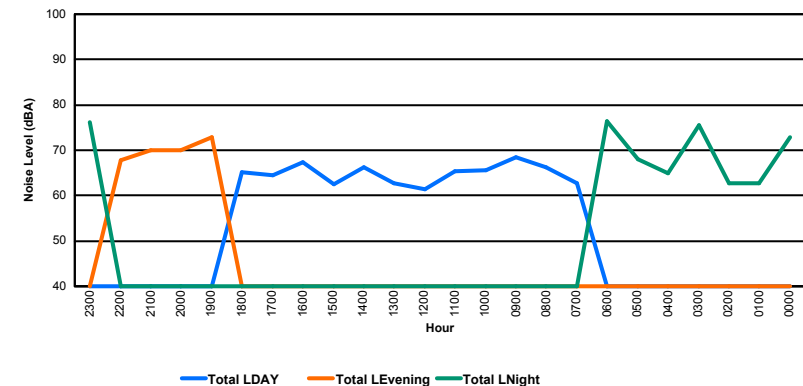
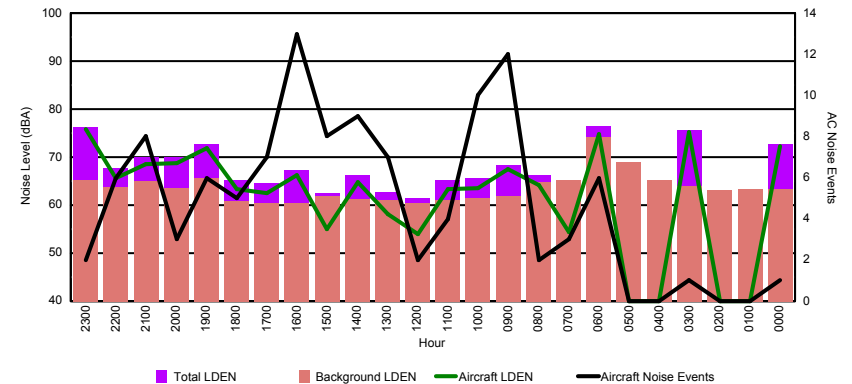


## Luxembourg Airport Noise Distribution by Hour

Between 10/03/2016 00:00:00 and 10/03/2016 23:59:59 (Local Time)

Day	Aircraft Events	Total LDEN dB (A)	Aircraft LDEN dB(A)	Background LDEN dB(A)	Total LDay dB(A)	Total LEvening dB(A)	Total LNight dB (A)
10/03/16 0:00	1	72.8	72.3	63.4	-	-	72.8
10/03/16 1:00	-	62.8	-	63.4	-	-	62.8
10/03/16 2:00	-	62.7	-	63.2	-	-	62.7
10/03/16 3:00	1	75.6	75.3	63.9	-	-	75.6
10/03/16 4:00	-	65.0	-	65.3	-	-	65.0
10/03/16 5:00	-	68.0	-	69.0	-	-	68.0
10/03/16 6:00	6	76.4	74.7	74.1	-	-	76.4
10/03/16 7:00	3	62.8	54.4	65.3	62.8	-	-
10/03/16 8:00	2	66.2	64.2	64.7	66.2	-	-
10/03/16 9:00	12	68.4	67.4	61.9	68.4	-	-
10/03/16 10:00	10	65.6	63.6	61.5	65.6	-	-
10/03/16 11:00	4	65.3	63.4	61.1	65.3	-	-
10/03/16 12:00	2	61.4	53.9	60.5	61.4	-	-
10/03/16 13:00	7	62.8	58.1	61.1	62.8	-	-
10/03/16 14:00	9	66.3	64.7	61.3	66.3	-	-
10/03/16 15:00	8	62.5	55.1	61.8	62.5	-	-
10/03/16 16:00	13	67.3	66.3	60.4	67.3	-	-
10/03/16 17:00	7	64.5	62.5	60.4	64.5	-	-
10/03/16 18:00	5	65.2	63.4	60.8	65.2	-	-
10/03/16 19:00	6	72.8	71.9	65.7	-	72.8	-
10/03/16 20:00	3	69.9	68.7	63.6	-	69.9	-
10/03/16 21:00	8	70.1	68.6	64.9	-	70.1	-
10/03/16 22:00	6	67.7	65.6	63.7	-	67.7	-
10/03/16 23:00	2	76.2	75.8	65.3	-	-	76.2
	115	70.0	69.5	65.2	65.3	70.5	72.8

Location: NDB-Hamm NMT # 4





## Luxembourg Airport Noise Distribution by Hour

Between 10/03/2016 00:00:00 and 10/03/2016 23:59:59 (Local Time)

Day	Aircraft Events	Total LDEN dB (A)	Aircraft LDEN dB(A)	Background LDEN dB(A)	Total LDay dB(A)	Total LEvening dB(A)	Total LNight dB (A)
10/03/16 0:00	1	68.8	65.9	66.9	-	-	68.8
10/03/16 1:00	-	62.8	-	63.3	-	-	62.8
10/03/16 2:00	-	61.6	-	61.8	-	-	61.6
10/03/16 3:00	1	67.6	66.2	61.9	-	-	67.6
10/03/16 4:00	-	65.4	-	65.6	-	-	65.4
10/03/16 5:00	-	69.6	-	70.7	-	-	69.6
10/03/16 6:00	2	75.7	68.2	76.8	-	-	75.7
10/03/16 7:00	1	62.4	48.8	65.1	62.4	-	-
10/03/16 8:00	3	64.1	57.4	65.9	64.1	-	-
10/03/16 9:00	10	64.6	60.5	63.5	64.6	-	-
10/03/16 10:00	10	63.3	56.9	62.6	63.3	-	-
10/03/16 11:00	4	64.0	58.2	63.1	64.0	-	-
10/03/16 12:00	2	63.3	49.5	63.3	63.3	-	-
10/03/16 13:00	7	64.1	53.5	63.9	64.1	-	-
10/03/16 14:00	7	63.7	58.2	62.7	63.7	-	-
10/03/16 15:00	7	62.3	51.7	62.3	62.3	-	-
10/03/16 16:00	11	63.9	60.6	61.6	63.9	-	-
10/03/16 17:00	7	62.0	55.4	61.2	62.0	-	-
10/03/16 18:00	8	62.3	57.9	60.6	62.3	-	-
10/03/16 19:00	6	68.6	65.2	66.1	-	68.6	-
10/03/16 20:00	4	67.9	64.0	65.9	-	67.9	-
10/03/16 21:00	10	67.5	63.3	65.7	-	67.5	-
10/03/16 22:00	7	66.3	60.5	65.3	-	66.3	-
10/03/16 23:00	1	70.1	66.5	67.8	-	-	70.1
	<b>109</b>	<b>67.2</b>	<b>62.3</b>	<b>67.0</b>	<b>63.4</b>	<b>67.7</b>	<b>69.8</b>

Location: Gare centrale NMT # 5

