

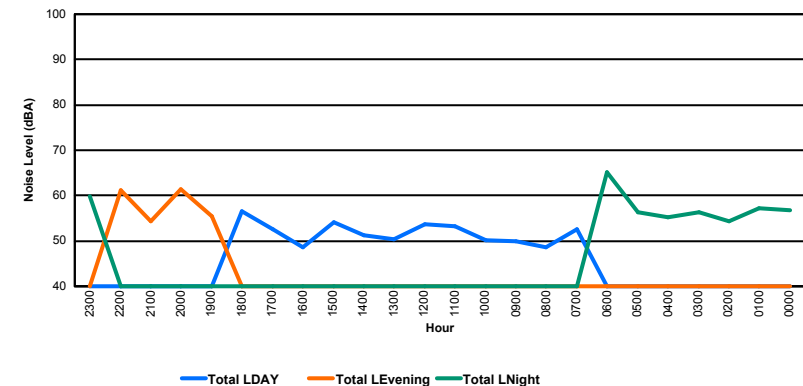
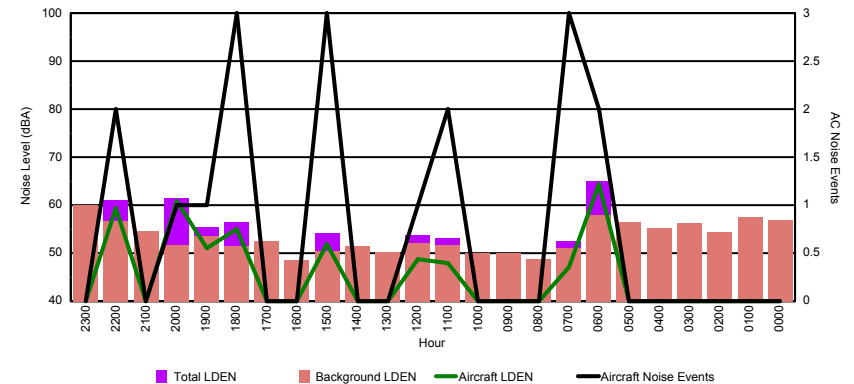


Luxembourg Airport Noise Distribution by Hour

Between 29/02/2016 00:00:00 and 29/02/2016 23:59:59 (Local Time)

Day	Aircraft Events	Total LDEN dB (A)	Aircraft LDEN dB(A)	Background LDEN dB(A)	Total LDay dB(A)	Total LEvening dB(A)	Total LNight dB (A)
29/02/16 0:00	-	56.7	-	56.8	-	-	56.7
29/02/16 1:00	-	57.3	-	57.4	-	-	57.3
29/02/16 2:00	-	54.4	-	54.4	-	-	54.4
29/02/16 3:00	-	56.3	-	56.3	-	-	56.3
29/02/16 4:00	-	55.2	-	55.2	-	-	55.2
29/02/16 5:00	-	56.4	-	56.4	-	-	56.4
29/02/16 6:00	2	65.1	64.3	57.9	-	-	65.1
29/02/16 7:00	3	52.5	47.0	51.1	52.5	-	-
29/02/16 8:00	-	48.7	-	48.7	48.7	-	-
29/02/16 9:00	-	50.0	-	50.1	50.0	-	-
29/02/16 10:00	-	50.1	-	50.1	50.1	-	-
29/02/16 11:00	2	53.2	48.0	51.7	53.2	-	-
29/02/16 12:00	1	53.7	48.7	52.1	53.7	-	-
29/02/16 13:00	-	50.3	-	50.3	50.3	-	-
29/02/16 14:00	-	51.3	-	51.4	51.3	-	-
29/02/16 15:00	3	54.2	51.8	50.5	54.2	-	-
29/02/16 16:00	-	48.6	-	48.6	48.6	-	-
29/02/16 17:00	-	52.6	-	52.6	52.6	-	-
29/02/16 18:00	3	56.5	55.0	51.4	56.5	-	-
29/02/16 19:00	1	55.4	51.0	53.5	-	55.4	-
29/02/16 20:00	1	61.4	60.9	51.7	-	61.4	-
29/02/16 21:00	-	54.4	-	54.5	-	54.4	-
29/02/16 22:00	2	61.1	59.3	56.6	-	61.1	-
29/02/16 23:00	-	59.9	-	60.0	-	-	59.9
	18	57.0	57.9	54.5	52.4	59.2	59.2

Location: Roodt/Syr NMT # 1



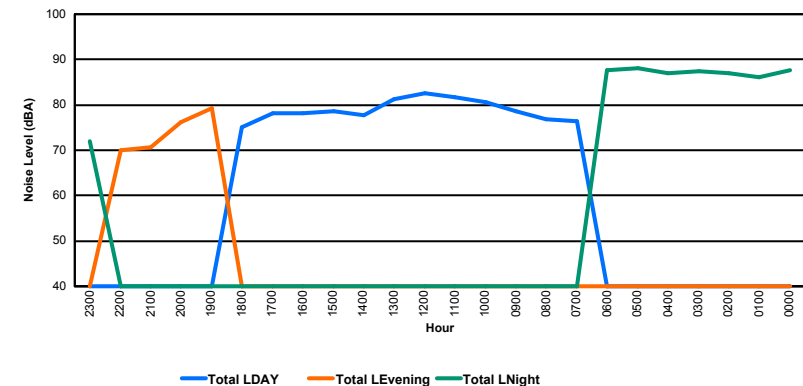
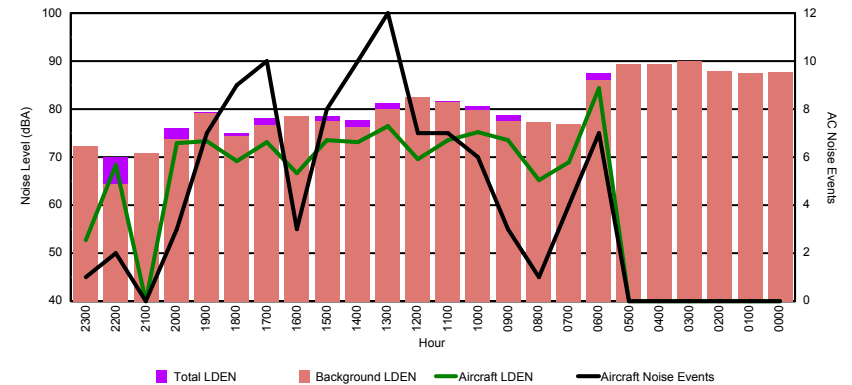


Luxembourg Airport Noise Distribution by Hour

Between 29/02/2016 00:00:00 and 29/02/2016 23:59:59 (Local Time)

Day	Aircraft Events	Total LDEN dB (A)	Aircraft LDEN dB(A)	Background LDEN dB(A)	Total LDay dB(A)	Total LEvening dB(A)	Total LNight dB (A)
29/02/16 0:00	-	87.6	-	87.7	-	-	87.6
29/02/16 1:00	-	86.0	-	87.4	-	-	86.0
29/02/16 2:00	-	87.1	-	87.9	-	-	87.1
29/02/16 3:00	-	87.5	-	90.0	-	-	87.5
29/02/16 4:00	-	87.0	-	89.3	-	-	87.0
29/02/16 5:00	-	88.1	-	89.3	-	-	88.1
29/02/16 6:00	7	87.6	84.4	86.1	-	-	87.6
29/02/16 7:00	4	76.5	68.9	76.8	76.5	-	-
29/02/16 8:00	1	76.8	65.2	77.2	76.8	-	-
29/02/16 9:00	3	78.7	73.6	77.6	78.7	-	-
29/02/16 10:00	6	80.6	75.3	79.7	80.6	-	-
29/02/16 11:00	7	81.6	73.5	81.4	81.6	-	-
29/02/16 12:00	7	82.5	69.6	82.5	82.5	-	-
29/02/16 13:00	12	81.3	76.4	80.0	81.3	-	-
29/02/16 14:00	10	77.8	73.1	76.3	77.8	-	-
29/02/16 15:00	8	78.5	73.5	77.4	78.5	-	-
29/02/16 16:00	3	78.2	66.7	78.5	78.2	-	-
29/02/16 17:00	10	78.1	73.2	76.6	78.1	-	-
29/02/16 18:00	9	75.1	69.1	74.3	75.1	-	-
29/02/16 19:00	7	79.3	73.4	79.2	-	79.3	-
29/02/16 20:00	3	76.1	72.9	73.7	-	76.1	-
29/02/16 21:00	-	70.7	-	70.9	-	70.7	-
29/02/16 22:00	2	69.9	68.4	64.4	-	69.9	-
29/02/16 23:00	1	72.0	52.7	72.3	-	-	72.0
	100	83.2	75.0	83.9	79.3	75.7	86.8

Location: DVOR NMT # 2



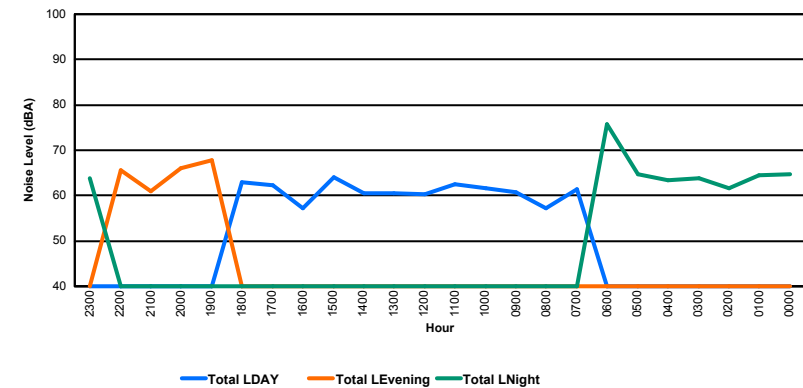
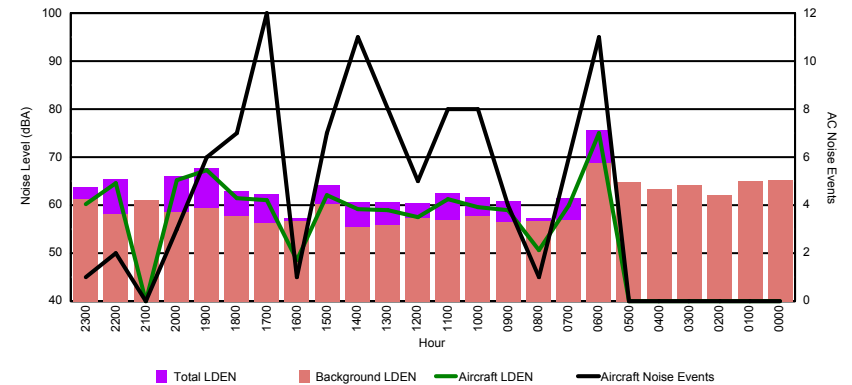


Luxembourg Airport Noise Distribution by Hour

Between 29/02/2016 00:00:00 and 29/02/2016 23:59:59 (Local Time)

Day	Aircraft Events	Total LDEN dB (A)	Aircraft LDEN dB(A)	Background LDEN dB(A)	Total LDay dB(A)	Total LEvening dB(A)	Total LNight dB (A)
29/02/16 0:00	-	64.7	-	65.3	-	-	64.7
29/02/16 1:00	-	64.4	-	65.1	-	-	64.4
29/02/16 2:00	-	61.7	-	62.0	-	-	61.7
29/02/16 3:00	-	63.9	-	64.1	-	-	63.9
29/02/16 4:00	-	63.4	-	63.4	-	-	63.4
29/02/16 5:00	-	64.7	-	64.8	-	-	64.7
29/02/16 6:00	11	75.7	74.9	68.8	-	-	75.7
29/02/16 7:00	6	61.5	59.9	56.9	61.5	-	-
29/02/16 8:00	1	57.3	50.7	56.6	57.3	-	-
29/02/16 9:00	4	60.8	58.9	56.4	60.8	-	-
29/02/16 10:00	8	61.7	59.6	57.7	61.7	-	-
29/02/16 11:00	8	62.6	61.3	56.8	62.6	-	-
29/02/16 12:00	5	60.4	57.5	57.3	60.4	-	-
29/02/16 13:00	8	60.6	59.0	55.9	60.6	-	-
29/02/16 14:00	11	60.6	59.1	55.5	60.6	-	-
29/02/16 15:00	7	64.1	62.0	60.2	64.1	-	-
29/02/16 16:00	1	57.2	48.5	56.6	57.2	-	-
29/02/16 17:00	12	62.3	61.1	56.3	62.3	-	-
29/02/16 18:00	7	62.9	61.4	57.8	62.9	-	-
29/02/16 19:00	6	67.8	67.2	59.3	-	67.8	-
29/02/16 20:00	3	66.0	65.2	58.5	-	66.0	-
29/02/16 21:00	-	61.0	-	61.1	-	61.0	-
29/02/16 22:00	2	65.5	64.6	58.2	-	65.5	-
29/02/16 23:00	1	63.8	60.3	61.3	-	-	63.8
	101	65.5	65.0	61.6	61.4	65.7	68.3

Location: Mid Runway NMT # 3

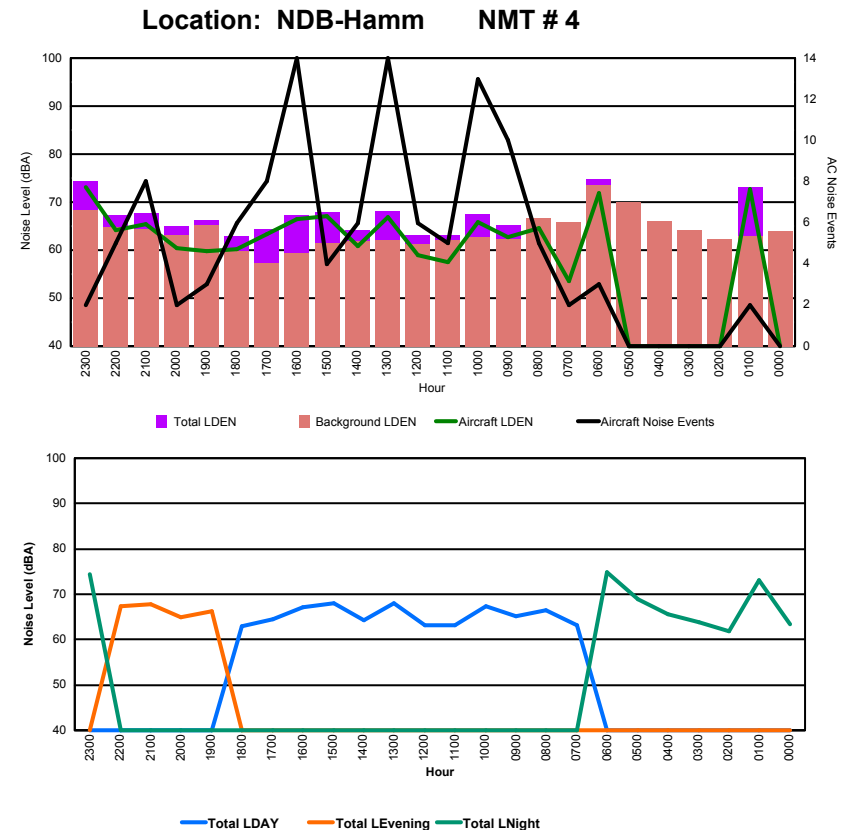




Luxembourg Airport Noise Distribution by Hour

Between 29/02/2016 00:00:00 and 29/02/2016 23:59:59 (Local Time)

Day	Aircraft Events	Total LDEN dB (A)	Aircraft LDEN dB(A)	Background LDEN dB(A)	Total LDay dB(A)	Total LEvening dB(A)	Total LNight dB (A)
29/02/16 0:00	-	63.4	-	64.0	-	-	63.4
29/02/16 1:00	2	73.2	72.8	62.9	-	-	73.2
29/02/16 2:00	-	61.9	-	62.2	-	-	61.9
29/02/16 3:00	-	63.9	-	64.1	-	-	63.9
29/02/16 4:00	-	65.7	-	66.1	-	-	65.7
29/02/16 5:00	-	68.8	-	70.1	-	-	68.8
29/02/16 6:00	3	74.8	71.8	73.6	-	-	74.8
29/02/16 7:00	2	63.1	53.6	65.9	63.1	-	-
29/02/16 8:00	5	66.4	64.6	66.6	66.4	-	-
29/02/16 9:00	10	65.2	62.7	62.3	65.2	-	-
29/02/16 10:00	13	67.4	65.8	62.8	67.4	-	-
29/02/16 11:00	5	63.1	57.4	62.0	63.1	-	-
29/02/16 12:00	6	63.2	59.0	61.3	63.2	-	-
29/02/16 13:00	14	68.1	66.9	62.1	68.1	-	-
29/02/16 14:00	6	64.2	60.9	61.8	64.2	-	-
29/02/16 15:00	4	68.0	67.0	61.4	68.0	-	-
29/02/16 16:00	14	67.2	66.5	59.3	67.2	-	-
29/02/16 17:00	8	64.4	63.4	57.3	64.4	-	-
29/02/16 18:00	6	63.0	60.2	59.8	63.0	-	-
29/02/16 19:00	3	66.3	59.8	65.3	-	66.3	-
29/02/16 20:00	2	64.9	60.4	63.1	-	64.9	-
29/02/16 21:00	8	67.8	65.4	64.3	-	67.8	-
29/02/16 22:00	5	67.3	64.2	64.7	-	67.3	-
29/02/16 23:00	2	74.4	73.2	68.3	-	-	74.4
	118	68.2	66.9	65.5	65.7	66.7	70.8





Luxembourg Airport Noise Distribution by Hour

Between 29/02/2016 00:00:00 and 29/02/2016 23:59:59 (Local Time)

Day	Aircraft Events	Total LDEN dB (A)	Aircraft LDEN dB(A)	Background LDEN dB(A)	Total LDay dB(A)	Total LEvening dB(A)	Total LNight dB (A)
29/02/16 0:00	-	64.2	-	65.2	-	-	64.2
29/02/16 1:00	1	68.3	67.0	62.7	-	-	68.3
29/02/16 2:00	-	63.9	-	64.2	-	-	63.9
29/02/16 3:00	-	61.6	-	61.6	-	-	61.6
29/02/16 4:00	-	63.8	-	63.9	-	-	63.8
29/02/16 5:00	-	69.1	-	70.6	-	-	69.1
29/02/16 6:00	1	72.0	66.5	72.4	-	-	72.0
29/02/16 7:00	1	63.7	50.4	67.6	63.7	-	-
29/02/16 8:00	4	63.2	58.2	64.7	63.2	-	-
29/02/16 9:00	12	63.9	56.7	63.9	63.9	-	-
29/02/16 10:00	11	64.9	59.8	63.8	64.9	-	-
29/02/16 11:00	3	63.7	49.8	63.7	63.7	-	-
29/02/16 12:00	4	61.6	51.0	61.4	61.6	-	-
29/02/16 13:00	13	64.2	60.4	62.4	64.2	-	-
29/02/16 14:00	6	63.2	55.5	62.7	63.2	-	-
29/02/16 15:00	5	64.1	60.1	62.1	64.1	-	-
29/02/16 16:00	14	64.0	59.9	62.4	64.0	-	-
29/02/16 17:00	10	62.2	57.1	60.8	62.2	-	-
29/02/16 18:00	6	61.2	54.7	60.3	61.2	-	-
29/02/16 19:00	3	66.0	53.6	65.8	-	66.0	-
29/02/16 20:00	2	65.8	53.6	65.6	-	65.8	-
29/02/16 21:00	8	65.7	59.5	64.7	-	65.7	-
29/02/16 22:00	6	63.8	58.6	62.3	-	63.8	-
29/02/16 23:00	3	70.0	67.6	66.6	-	-	70.0
	113	65.7	61.0	65.4	63.4	65.4	67.9

Location: Gare centrale NMT # 5

