

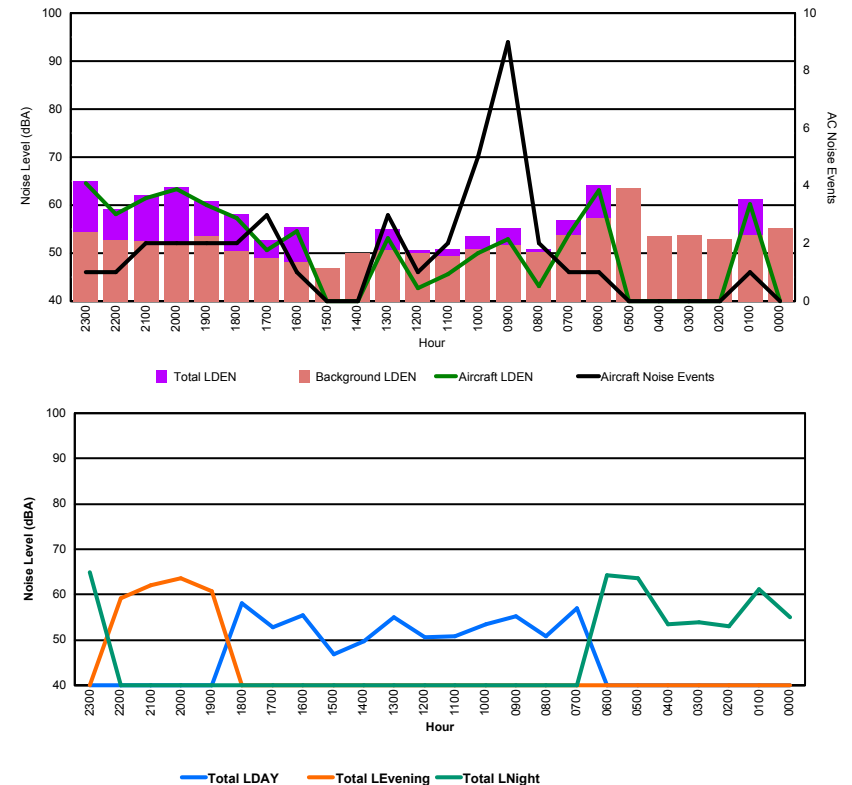


Luxembourg Airport Noise Distribution by Hour

Between 26/02/2016 00:00:00 and 26/02/2016 23:59:59 (Local Time)

Day	Aircraft Events	Total LDEN dB (A)	Aircraft LDEN dB(A)	Background LDEN dB(A)	Total LDay dB(A)	Total LEvening dB(A)	Total LNight dB (A)
26/02/16 0:00	-	55.1	-	55.2	-	-	55.1
26/02/16 1:00	1	61.2	60.3	53.8	-	-	61.2
26/02/16 2:00	-	53.0	-	53.0	-	-	53.0
26/02/16 3:00	-	53.8	-	53.8	-	-	53.8
26/02/16 4:00	-	53.5	-	53.5	-	-	53.5
26/02/16 5:00	-	63.6	-	63.6	-	-	63.6
26/02/16 6:00	1	64.2	63.2	57.3	-	-	64.2
26/02/16 7:00	1	56.9	54.0	53.8	56.9	-	-
26/02/16 8:00	2	50.9	43.1	50.2	50.9	-	-
26/02/16 9:00	9	55.2	52.9	51.6	55.2	-	-
26/02/16 10:00	5	53.5	50.1	50.9	53.5	-	-
26/02/16 11:00	2	50.8	45.7	49.4	50.8	-	-
26/02/16 12:00	1	50.7	42.8	49.9	50.7	-	-
26/02/16 13:00	3	55.0	53.1	50.6	55.0	-	-
26/02/16 14:00	-	49.8	-	49.9	49.8	-	-
26/02/16 15:00	-	46.9	-	46.9	46.9	-	-
26/02/16 16:00	1	55.5	54.6	48.1	55.5	-	-
26/02/16 17:00	3	52.8	50.7	49.0	52.8	-	-
26/02/16 18:00	2	58.1	57.3	50.4	58.1	-	-
26/02/16 19:00	2	60.8	60.0	53.6	-	60.8	-
26/02/16 20:00	2	63.7	63.4	52.2	-	63.7	-
26/02/16 21:00	2	62.0	61.5	52.4	-	62.0	-
26/02/16 22:00	1	59.2	58.1	52.7	-	59.2	-
26/02/16 23:00	1	64.9	64.5	54.4	-	-	64.9
	39	59.1	58.8	54.3	54.1	61.7	61.1

Location: Roodt/Syr NMT # 1



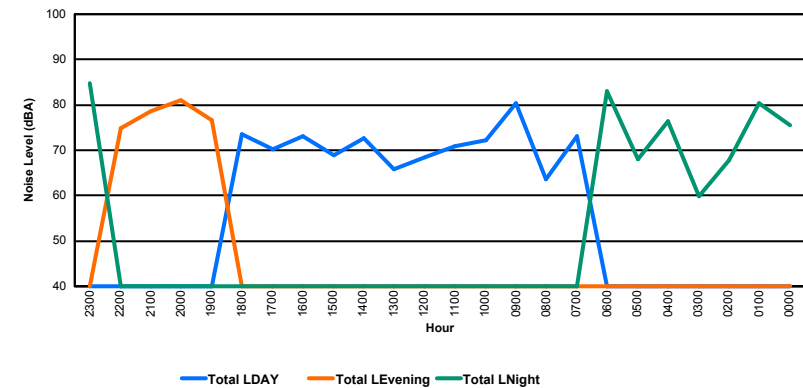
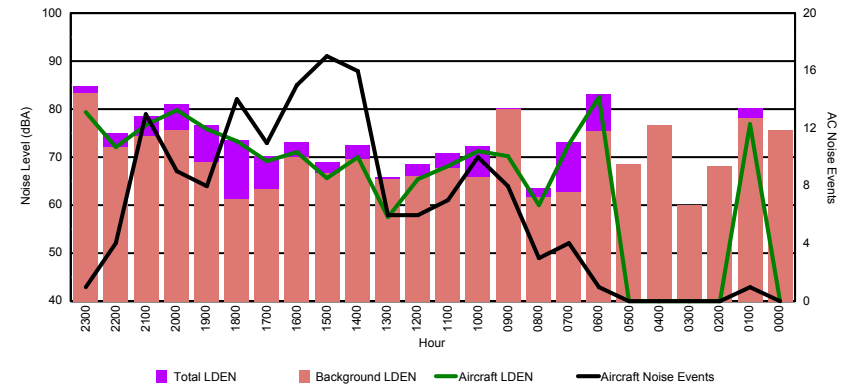


Luxembourg Airport Noise Distribution by Hour

Between 26/02/2016 00:00:00 and 26/02/2016 23:59:59 (Local Time)

Day	Aircraft Events	Total LDEN dB (A)	Aircraft LDEN dB(A)	Background LDEN dB(A)	Total LDay dB(A)	Total LEvening dB(A)	Total LNight dB (A)
26/02/16 0:00	-	75.6	-	75.7	-	-	75.6
26/02/16 1:00	1	80.3	76.9	78.1	-	-	80.3
26/02/16 2:00	-	67.9	-	68.1	-	-	67.9
26/02/16 3:00	-	59.8	-	59.9	-	-	59.8
26/02/16 4:00	-	76.4	-	76.7	-	-	76.4
26/02/16 5:00	-	68.1	-	68.6	-	-	68.1
26/02/16 6:00	1	83.1	82.5	75.4	-	-	83.1
26/02/16 7:00	4	73.1	72.8	62.8	73.1	-	-
26/02/16 8:00	3	63.5	60.0	61.6	63.5	-	-
26/02/16 9:00	8	80.3	70.2	79.9	80.3	-	-
26/02/16 10:00	10	72.2	71.2	65.8	72.2	-	-
26/02/16 11:00	7	70.8	68.1	67.8	70.8	-	-
26/02/16 12:00	6	68.5	65.4	66.1	68.5	-	-
26/02/16 13:00	6	65.8	57.6	65.4	65.8	-	-
26/02/16 14:00	16	72.6	69.9	69.6	72.6	-	-
26/02/16 15:00	17	69.0	65.7	66.7	69.0	-	-
26/02/16 16:00	15	73.2	71.0	70.1	73.2	-	-
26/02/16 17:00	11	70.2	69.2	63.4	70.2	-	-
26/02/16 18:00	14	73.6	73.4	61.2	73.6	-	-
26/02/16 19:00	8	76.7	75.9	69.0	-	76.7	-
26/02/16 20:00	9	81.1	79.7	75.7	-	81.1	-
26/02/16 21:00	13	78.5	76.7	74.4	-	78.5	-
26/02/16 22:00	4	74.9	72.1	72.0	-	74.9	-
26/02/16 23:00	1	84.8	79.3	83.4	-	-	84.8
	154	77.1	75.1	74.3	73.2	78.4	79.5

Location: DVOR NMT # 2

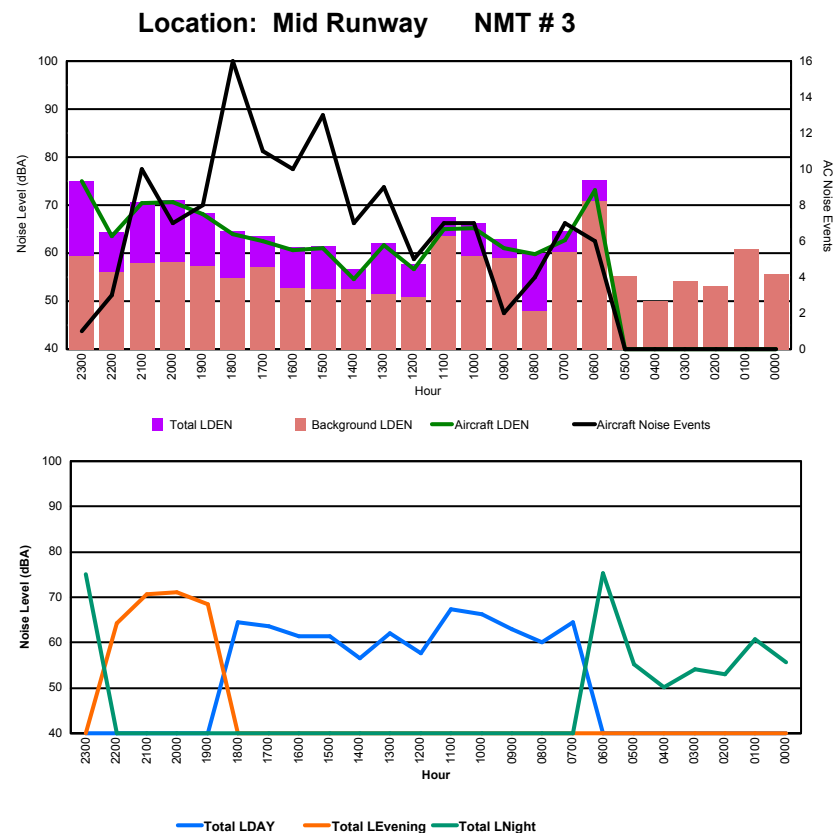




Luxembourg Airport Noise Distribution by Hour

Between 26/02/2016 00:00:00 and 26/02/2016 23:59:59 (Local Time)

Day	Aircraft Events	Total LDEN dB (A)	Aircraft LDEN dB(A)	Background LDEN dB(A)	Total LDay dB(A)	Total LEvening dB(A)	Total LNight dB (A)
26/02/16 0:00	-	55.6	-	55.6	-	-	55.6
26/02/16 1:00	-	60.8	-	60.8	-	-	60.8
26/02/16 2:00	-	53.1	-	53.1	-	-	53.1
26/02/16 3:00	-	54.2	-	54.2	-	-	54.2
26/02/16 4:00	-	50.1	-	50.1	-	-	50.1
26/02/16 5:00	-	55.2	-	55.2	-	-	55.2
26/02/16 6:00	6	75.2	73.1	70.9	-	-	75.2
26/02/16 7:00	7	64.6	62.7	60.2	64.6	-	-
26/02/16 8:00	4	60.0	59.7	48.0	60.0	-	-
26/02/16 9:00	2	63.0	61.0	58.9	63.0	-	-
26/02/16 10:00	7	66.3	65.3	59.3	66.3	-	-
26/02/16 11:00	7	67.4	65.1	63.6	67.4	-	-
26/02/16 12:00	5	57.7	56.7	50.9	57.7	-	-
26/02/16 13:00	9	62.0	61.6	51.4	62.0	-	-
26/02/16 14:00	7	56.6	54.6	52.6	56.6	-	-
26/02/16 15:00	13	61.5	61.0	52.5	61.5	-	-
26/02/16 16:00	10	61.3	60.7	52.8	61.3	-	-
26/02/16 17:00	11	63.5	62.4	57.1	63.5	-	-
26/02/16 18:00	16	64.5	64.0	54.7	64.5	-	-
26/02/16 19:00	8	68.4	68.1	57.2	-	68.4	-
26/02/16 20:00	7	71.0	70.7	58.2	-	71.0	-
26/02/16 21:00	10	70.6	70.4	58.0	-	70.6	-
26/02/16 22:00	3	64.3	63.5	56.1	-	64.3	-
26/02/16 23:00	1	75.0	74.9	59.3	-	-	75.0
	133	67.2	67.5	60.1	63.4	69.3	69.2



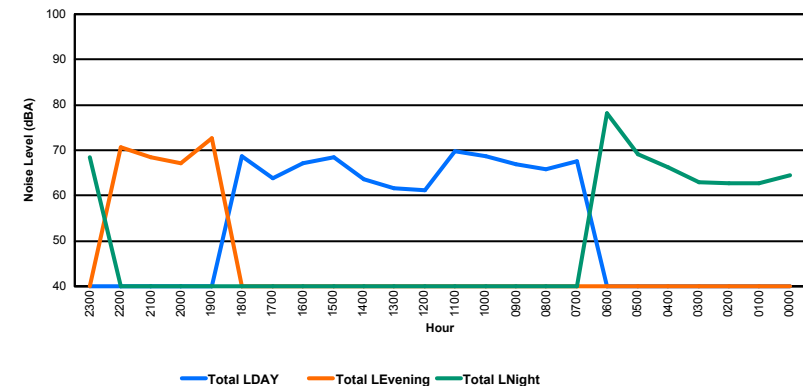
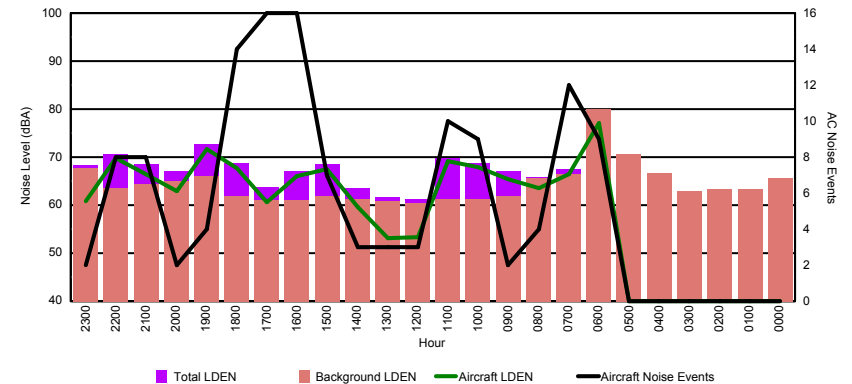


Luxembourg Airport Noise Distribution by Hour

Between 26/02/2016 00:00:00 and 26/02/2016 23:59:59 (Local Time)

Day	Aircraft Events	Total LDEN dB (A)	Aircraft LDEN dB(A)	Background LDEN dB(A)	Total LDay dB(A)	Total LEvening dB(A)	Total LNight dB (A)
26/02/16 0:00	-	64.6	-	65.7	-	-	64.6
26/02/16 1:00	-	62.8	-	63.3	-	-	62.8
26/02/16 2:00	-	62.8	-	63.3	-	-	62.8
26/02/16 3:00	-	62.9	-	63.0	-	-	62.9
26/02/16 4:00	-	66.2	-	66.7	-	-	66.2
26/02/16 5:00	-	69.2	-	70.7	-	-	69.2
26/02/16 6:00	9	78.2	77.1	80.1	-	-	78.2
26/02/16 7:00	12	67.5	66.4	66.4	67.5	-	-
26/02/16 8:00	4	65.8	63.5	65.6	65.8	-	-
26/02/16 9:00	2	67.0	65.5	61.9	67.0	-	-
26/02/16 10:00	9	68.7	67.9	61.2	68.7	-	-
26/02/16 11:00	10	69.8	69.2	61.2	69.8	-	-
26/02/16 12:00	3	61.2	53.4	60.5	61.2	-	-
26/02/16 13:00	3	61.6	53.2	60.9	61.6	-	-
26/02/16 14:00	3	63.5	59.5	61.3	63.5	-	-
26/02/16 15:00	7	68.5	67.6	61.8	68.5	-	-
26/02/16 16:00	16	67.1	66.1	61.0	67.1	-	-
26/02/16 17:00	16	63.8	60.7	61.1	63.8	-	-
26/02/16 18:00	14	68.7	67.8	61.8	68.7	-	-
26/02/16 19:00	4	72.7	71.7	66.0	-	72.7	-
26/02/16 20:00	2	67.1	63.0	64.9	-	67.1	-
26/02/16 21:00	8	68.5	66.5	64.3	-	68.5	-
26/02/16 22:00	8	70.6	69.8	63.5	-	70.6	-
26/02/16 23:00	2	68.4	60.8	67.7	-	-	68.4
	132	69.1	68.5	68.5	66.9	70.2	70.7

Location: NDB-Hamm NMT # 4



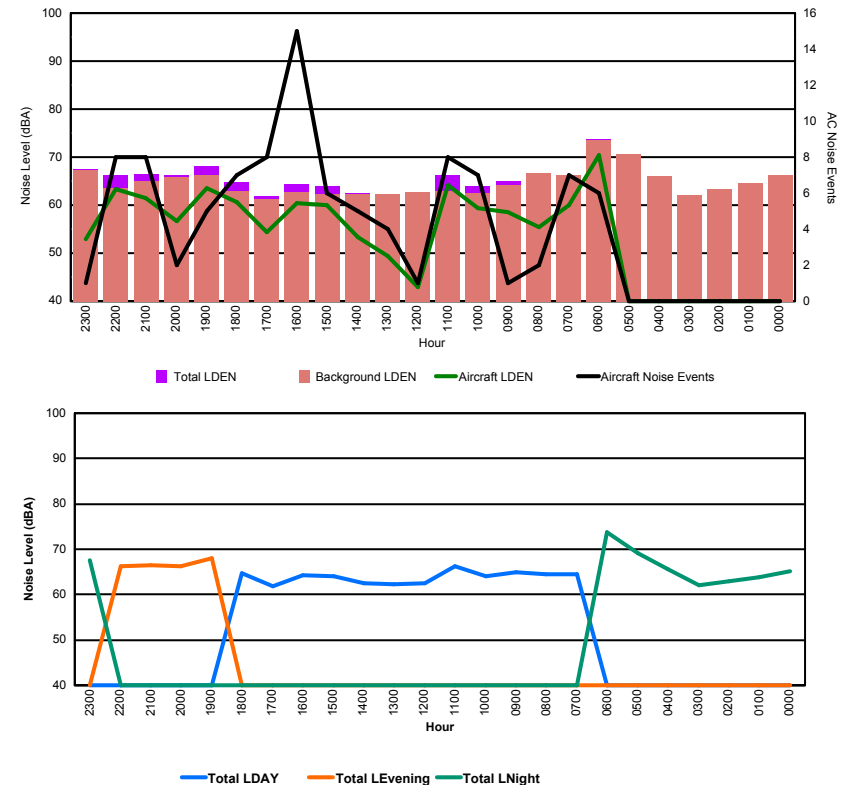


Luxembourg Airport Noise Distribution by Hour

Between 26/02/2016 00:00:00 and 26/02/2016 23:59:59 (Local Time)

Day	Aircraft Events	Total LDEN dB (A)	Aircraft LDEN dB(A)	Background LDEN dB(A)	Total LDay dB(A)	Total LEvening dB(A)	Total LNight dB (A)
26/02/16 0:00	-	65.2	-	66.3	-	-	65.2
26/02/16 1:00	-	63.8	-	64.5	-	-	63.8
26/02/16 2:00	-	62.9	-	63.4	-	-	62.9
26/02/16 3:00	-	62.1	-	62.1	-	-	62.1
26/02/16 4:00	-	65.7	-	66.0	-	-	65.7
26/02/16 5:00	-	69.2	-	70.7	-	-	69.2
26/02/16 6:00	6	73.8	70.5	73.5	-	-	73.8
26/02/16 7:00	7	64.4	59.9	66.3	64.4	-	-
26/02/16 8:00	2	64.6	55.5	66.7	64.6	-	-
26/02/16 9:00	1	64.9	58.6	64.2	64.9	-	-
26/02/16 10:00	7	64.0	59.4	62.6	64.0	-	-
26/02/16 11:00	8	66.3	64.1	62.9	66.3	-	-
26/02/16 12:00	1	62.4	43.0	62.8	62.4	-	-
26/02/16 13:00	4	62.2	49.4	62.2	62.2	-	-
26/02/16 14:00	5	62.4	53.4	62.2	62.4	-	-
26/02/16 15:00	6	64.0	60.0	62.2	64.0	-	-
26/02/16 16:00	15	64.3	60.5	62.7	64.3	-	-
26/02/16 17:00	8	61.8	54.3	61.2	61.8	-	-
26/02/16 18:00	7	64.8	60.6	62.9	64.8	-	-
26/02/16 19:00	5	68.1	63.6	66.3	-	68.1	-
26/02/16 20:00	2	66.3	56.7	65.9	-	66.3	-
26/02/16 21:00	8	66.4	61.4	65.0	-	66.4	-
26/02/16 22:00	8	66.3	63.3	63.5	-	66.3	-
26/02/16 23:00	1	67.5	53.0	67.3	-	-	67.5
	101	66.2	61.8	66.0	64.0	66.8	68.0

Location: Gare centrale NMT # 5



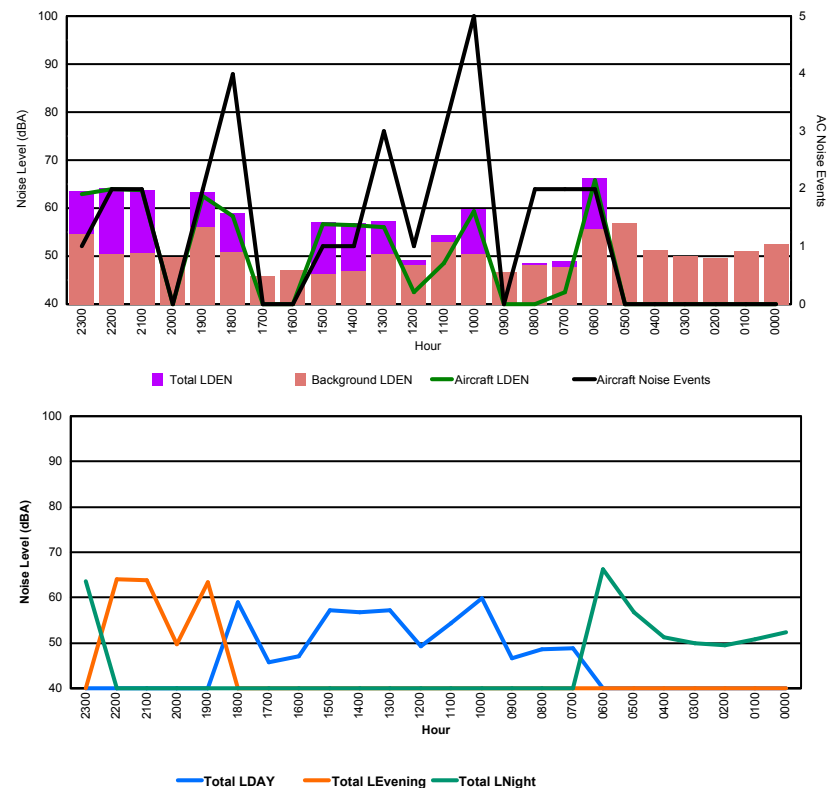


Luxembourg Airport Noise Distribution by Hour

Between 27/02/2016 00:00:00 and 27/02/2016 23:59:59 (Local Time)

Day	Aircraft Events	Total LDEN dB (A)	Aircraft LDEN dB(A)	Background LDEN dB(A)	Total LDay dB(A)	Total LEvening dB(A)	Total LNight dB (A)
27/02/16 0:00	-	52.4	-	52.4	-	-	52.4
27/02/16 1:00	-	50.9	-	51.0	-	-	50.9
27/02/16 2:00	-	49.5	-	49.5	-	-	49.5
27/02/16 3:00	-	50.0	-	50.0	-	-	50.0
27/02/16 4:00	-	51.2	-	51.2	-	-	51.2
27/02/16 5:00	-	56.8	-	56.9	-	-	56.8
27/02/16 6:00	2	66.2	65.8	55.7	-	-	66.2
27/02/16 7:00	2	48.9	42.4	47.8	48.9	-	-
27/02/16 8:00	2	48.5	39.3	48.1	48.5	-	-
27/02/16 9:00	-	46.7	-	46.7	46.7	-	-
27/02/16 10:00	5	59.8	59.3	50.5	59.8	-	-
27/02/16 11:00	3	54.3	48.6	53.0	54.3	-	-
27/02/16 12:00	1	49.2	42.5	48.1	49.2	-	-
27/02/16 13:00	3	57.2	56.1	50.5	57.2	-	-
27/02/16 14:00	1	56.8	56.4	46.9	56.8	-	-
27/02/16 15:00	1	57.1	56.7	46.3	57.1	-	-
27/02/16 16:00	-	47.0	-	47.0	47.0	-	-
27/02/16 17:00	-	45.8	-	45.8	45.8	-	-
27/02/16 18:00	4	59.0	58.4	50.8	59.0	-	-
27/02/16 19:00	2	63.3	62.5	56.1	-	63.3	-
27/02/16 20:00	-	49.8	-	49.8	-	49.8	-
27/02/16 21:00	2	63.8	63.7	50.7	-	63.8	-
27/02/16 22:00	2	64.1	63.9	50.4	-	64.1	-
27/02/16 23:00	1	63.5	62.9	54.6	-	-	63.5
	31	58.9	60.4	51.6	55.1	62.6	59.7

Location: Roodt/Syr NMT # 1



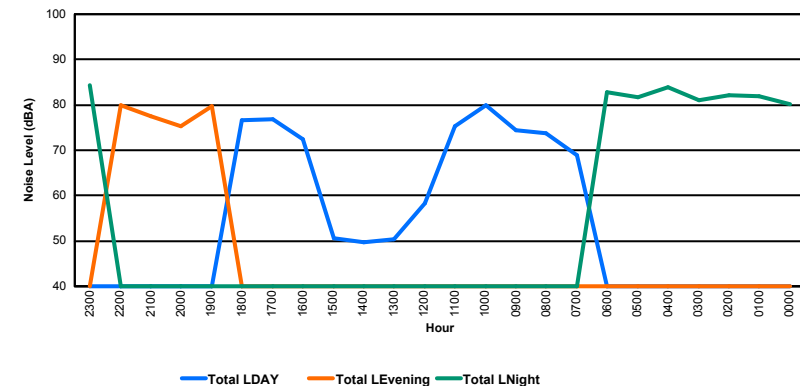
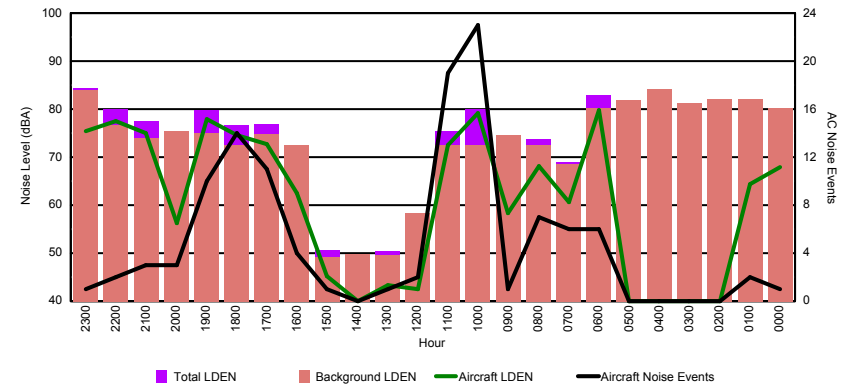


Luxembourg Airport Noise Distribution by Hour

Between 27/02/2016 00:00:00 and 27/02/2016 23:59:59 (Local Time)

Day	Aircraft Events	Total LDEN dB (A)	Aircraft LDEN dB(A)	Background LDEN dB(A)	Total LDay dB(A)	Total LEvening dB(A)	Total LNight dB (A)
27/02/16 0:00	1	80.2	67.9	80.3	-	-	80.2
27/02/16 1:00	2	82.0	64.4	82.0	-	-	82.0
27/02/16 2:00	-	82.1	-	82.1	-	-	82.1
27/02/16 3:00	-	81.0	-	81.2	-	-	81.0
27/02/16 4:00	-	84.0	-	84.2	-	-	84.0
27/02/16 5:00	-	81.6	-	81.8	-	-	81.6
27/02/16 6:00	6	82.9	79.7	80.2	-	-	82.9
27/02/16 7:00	6	69.0	60.6	68.6	69.0	-	-
27/02/16 8:00	7	73.7	68.2	72.4	73.7	-	-
27/02/16 9:00	1	74.5	58.3	74.5	74.5	-	-
27/02/16 10:00	23	80.0	79.2	72.5	80.0	-	-
27/02/16 11:00	19	75.4	72.6	72.5	75.4	-	-
27/02/16 12:00	2	58.4	42.6	58.3	58.4	-	-
27/02/16 13:00	1	50.4	43.3	49.5	50.4	-	-
27/02/16 14:00	-	49.7	-	49.7	49.7	-	-
27/02/16 15:00	1	50.6	45.2	49.1	50.6	-	-
27/02/16 16:00	4	72.4	62.6	72.5	72.4	-	-
27/02/16 17:00	11	76.8	72.7	74.7	76.8	-	-
27/02/16 18:00	14	76.6	74.5	72.4	76.6	-	-
27/02/16 19:00	10	79.7	78.0	74.9	-	79.7	-
27/02/16 20:00	3	75.4	56.3	75.5	-	75.4	-
27/02/16 21:00	3	77.5	75.0	74.0	-	77.5	-
27/02/16 22:00	2	80.0	77.4	76.7	-	80.0	-
27/02/16 23:00	1	84.4	75.5	83.9	-	-	84.4
	117	79.2	73.7	78.3	74.1	78.5	82.5

Location: DVOR NMT # 2

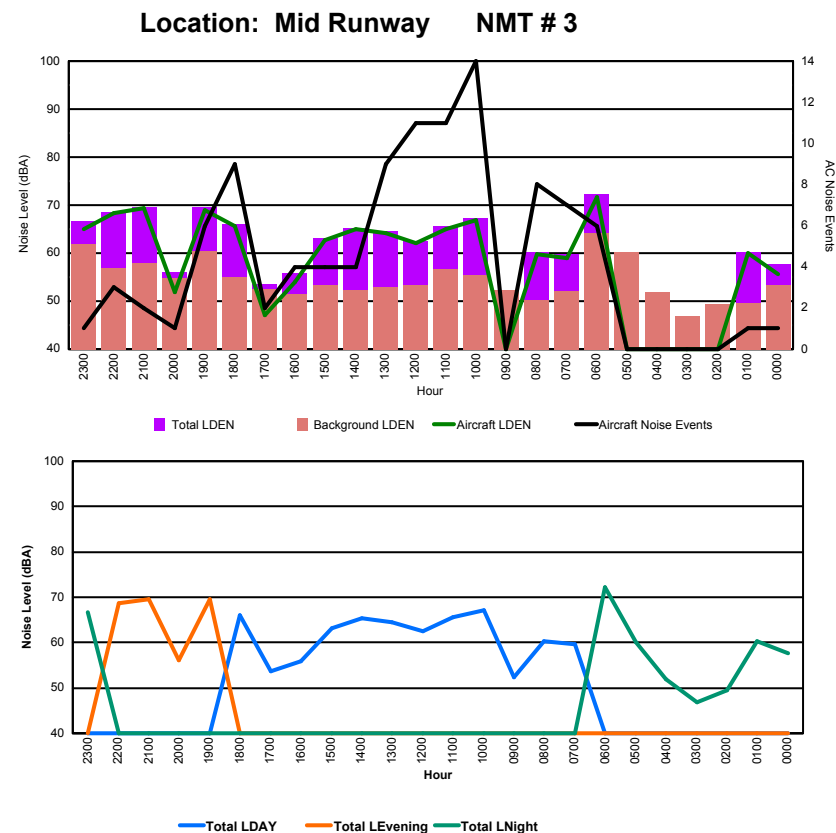




Luxembourg Airport Noise Distribution by Hour

Between 27/02/2016 00:00:00 and 27/02/2016 23:59:59 (Local Time)

Day	Aircraft Events	Total LDEN dB (A)	Aircraft LDEN dB(A)	Background LDEN dB(A)	Total LDay dB(A)	Total LEvening dB(A)	Total LNight dB (A)
27/02/16 0:00	1	57.7	55.7	53.4	-	-	57.7
27/02/16 1:00	1	60.3	59.9	49.5	-	-	60.3
27/02/16 2:00	-	49.4	-	49.4	-	-	49.4
27/02/16 3:00	-	46.8	-	46.8	-	-	46.8
27/02/16 4:00	-	51.9	-	51.9	-	-	51.9
27/02/16 5:00	-	60.1	-	60.2	-	-	60.1
27/02/16 6:00	6	72.3	71.7	64.2	-	-	72.3
27/02/16 7:00	7	59.7	58.9	52.0	59.7	-	-
27/02/16 8:00	8	60.2	59.8	50.2	60.2	-	-
27/02/16 9:00	-	52.3	-	52.3	52.3	-	-
27/02/16 10:00	14	67.2	66.9	55.4	67.2	-	-
27/02/16 11:00	11	65.6	65.0	56.6	65.6	-	-
27/02/16 12:00	11	62.6	62.1	53.4	62.6	-	-
27/02/16 13:00	9	64.5	64.2	53.0	64.5	-	-
27/02/16 14:00	4	65.3	65.0	52.3	65.3	-	-
27/02/16 15:00	4	63.1	62.7	53.4	63.1	-	-
27/02/16 16:00	4	55.9	54.0	51.4	55.9	-	-
27/02/16 17:00	2	53.6	47.0	52.6	53.6	-	-
27/02/16 18:00	9	66.1	65.7	55.1	66.1	-	-
27/02/16 19:00	6	69.5	68.9	60.4	-	69.5	-
27/02/16 20:00	1	56.0	51.8	54.7	-	56.0	-
27/02/16 21:00	2	69.6	69.3	57.9	-	69.6	-
27/02/16 22:00	3	68.6	68.3	56.9	-	68.6	-
27/02/16 23:00	1	66.7	65.0	61.9	-	-	66.7
	104	65.0	65.4	56.6	63.3	68.1	64.9



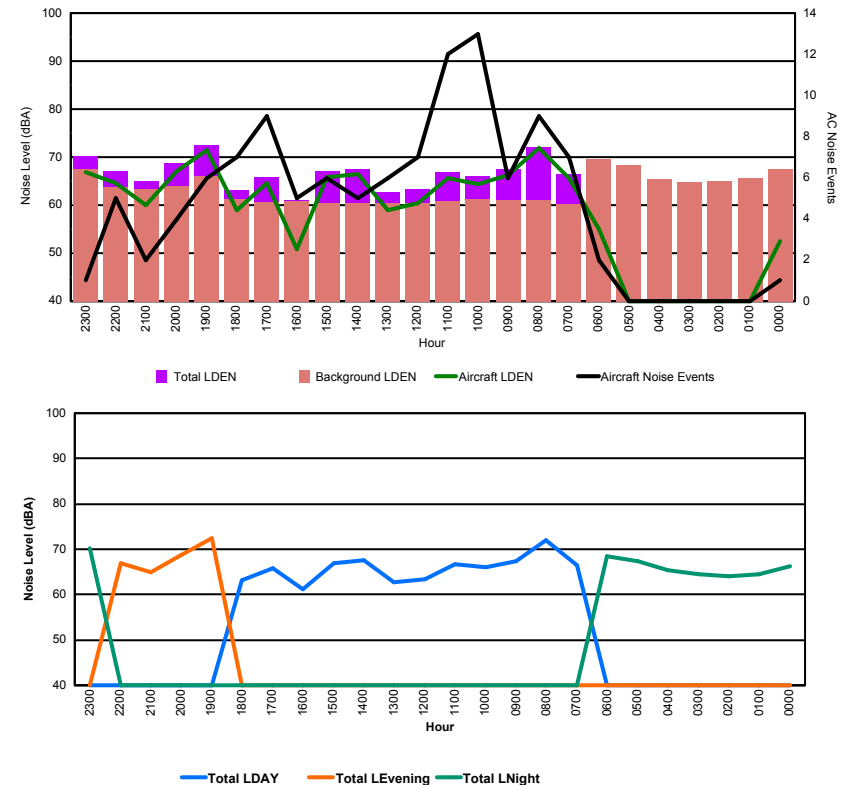


Luxembourg Airport Noise Distribution by Hour

Between 27/02/2016 00:00:00 and 27/02/2016 23:59:59 (Local Time)

Day	Aircraft Events	Total LDEN dB (A)	Aircraft LDEN dB(A)	Background LDEN dB(A)	Total LDay dB(A)	Total LEvening dB(A)	Total LNight dB (A)
27/02/16 0:00	1	66.2	52.4	67.4	-	-	66.2
27/02/16 1:00	-	64.6	-	65.6	-	-	64.6
27/02/16 2:00	-	64.1	-	64.9	-	-	64.1
27/02/16 3:00	-	64.6	-	64.8	-	-	64.6
27/02/16 4:00	-	65.3	-	65.5	-	-	65.3
27/02/16 5:00	-	67.4	-	68.3	-	-	67.4
27/02/16 6:00	2	68.5	54.9	69.6	-	-	68.5
27/02/16 7:00	7	66.4	65.6	60.3	66.4	-	-
27/02/16 8:00	9	72.1	71.9	61.1	72.1	-	-
27/02/16 9:00	6	67.4	66.3	61.1	67.4	-	-
27/02/16 10:00	13	66.0	64.4	61.3	66.0	-	-
27/02/16 11:00	12	66.8	65.7	60.8	66.8	-	-
27/02/16 12:00	7	63.4	60.5	60.4	63.4	-	-
27/02/16 13:00	6	62.7	59.0	60.5	62.7	-	-
27/02/16 14:00	5	67.5	66.5	60.5	67.5	-	-
27/02/16 15:00	6	67.0	65.9	60.5	67.0	-	-
27/02/16 16:00	5	61.1	50.9	60.8	61.1	-	-
27/02/16 17:00	9	65.9	64.5	60.6	65.9	-	-
27/02/16 18:00	7	63.1	58.9	61.2	63.1	-	-
27/02/16 19:00	6	72.5	71.5	66.0	-	72.5	-
27/02/16 20:00	4	68.7	67.0	63.9	-	68.7	-
27/02/16 21:00	2	65.0	60.1	63.3	-	65.0	-
27/02/16 22:00	5	67.0	64.5	63.8	-	67.0	-
27/02/16 23:00	1	70.2	66.9	67.5	-	-	70.2
	113	67.3	65.8	64.4	66.7	69.2	66.9

Location: NDB-Hamm NMT # 4

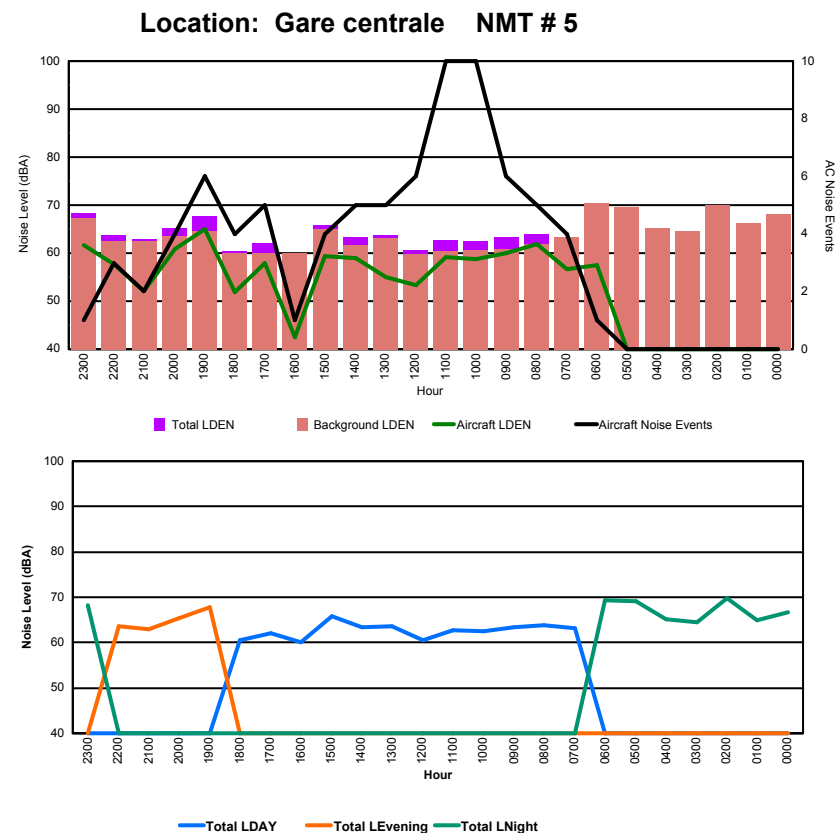




Luxembourg Airport Noise Distribution by Hour

Between 27/02/2016 00:00:00 and 27/02/2016 23:59:59 (Local Time)

Day	Aircraft Events	Total LDEN dB (A)	Aircraft LDEN dB(A)	Background LDEN dB(A)	Total LDay dB(A)	Total LEvening dB(A)	Total LNight dB (A)
27/02/16 0:00	-	66.7	-	68.1	-	-	66.7
27/02/16 1:00	-	65.0	-	66.3	-	-	65.0
27/02/16 2:00	-	69.7	-	70.1	-	-	69.7
27/02/16 3:00	-	64.5	-	64.6	-	-	64.5
27/02/16 4:00	-	65.1	-	65.2	-	-	65.1
27/02/16 5:00	-	69.2	-	69.6	-	-	69.2
27/02/16 6:00	1	69.4	57.6	70.4	-	-	69.4
27/02/16 7:00	4	63.2	56.6	63.3	63.2	-	-
27/02/16 8:00	5	63.9	61.9	61.8	63.9	-	-
27/02/16 9:00	6	63.3	59.9	60.9	63.3	-	-
27/02/16 10:00	10	62.6	58.7	60.7	62.6	-	-
27/02/16 11:00	10	62.7	59.2	60.4	62.7	-	-
27/02/16 12:00	6	60.6	53.3	59.8	60.6	-	-
27/02/16 13:00	5	63.7	55.1	63.2	63.7	-	-
27/02/16 14:00	5	63.4	59.0	61.6	63.4	-	-
27/02/16 15:00	4	65.9	59.3	64.9	65.9	-	-
27/02/16 16:00	1	60.1	42.6	60.1	60.1	-	-
27/02/16 17:00	5	62.0	58.0	60.0	62.0	-	-
27/02/16 18:00	4	60.5	51.8	59.9	60.5	-	-
27/02/16 19:00	6	67.7	65.1	64.5	-	67.7	-
27/02/16 20:00	4	65.3	60.8	63.5	-	65.3	-
27/02/16 21:00	2	63.0	52.0	62.6	-	63.0	-
27/02/16 22:00	3	63.7	57.8	62.5	-	63.7	-
27/02/16 23:00	1	68.3	61.6	67.3	-	-	68.3
	82	65.5	59.1	65.2	62.9	65.3	67.7



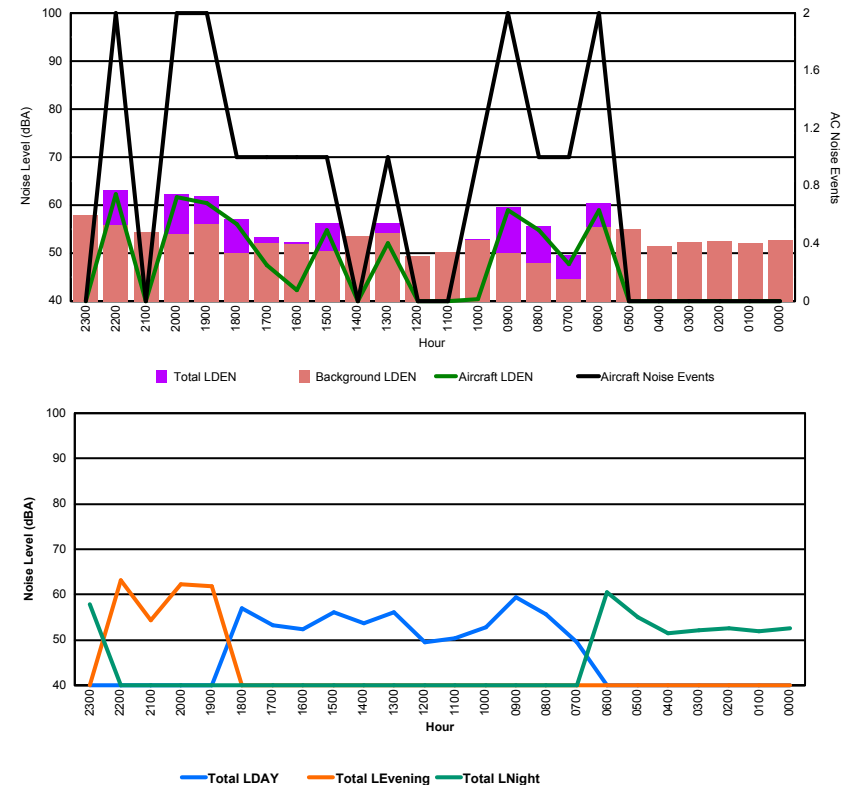


Luxembourg Airport Noise Distribution by Hour

Between 28/02/2016 00:00:00 and 28/02/2016 23:59:59 (Local Time)

Day	Aircraft Events	Total LDEN dB (A)	Aircraft LDEN dB(A)	Background LDEN dB(A)	Total LDay dB(A)	Total LEvening dB(A)	Total LNight dB (A)
28/02/16 0:00	-	52.6	-	52.7	-	-	52.6
28/02/16 1:00	-	51.9	-	52.0	-	-	51.9
28/02/16 2:00	-	52.6	-	52.6	-	-	52.6
28/02/16 3:00	-	52.2	-	52.2	-	-	52.2
28/02/16 4:00	-	51.5	-	51.5	-	-	51.5
28/02/16 5:00	-	54.9	-	54.9	-	-	54.9
28/02/16 6:00	2	60.5	59.0	55.5	-	-	60.5
28/02/16 7:00	1	49.5	47.8	44.6	49.5	-	-
28/02/16 8:00	1	55.6	54.7	48.0	55.6	-	-
28/02/16 9:00	2	59.5	59.0	50.1	59.5	-	-
28/02/16 10:00	1	52.9	40.5	52.7	52.9	-	-
28/02/16 11:00	-	50.3	-	50.3	50.3	-	-
28/02/16 12:00	-	49.4	-	49.4	49.4	-	-
28/02/16 13:00	1	56.2	52.0	54.2	56.2	-	-
28/02/16 14:00	-	53.6	-	53.6	53.6	-	-
28/02/16 15:00	1	56.2	54.8	50.5	56.2	-	-
28/02/16 16:00	1	52.3	42.2	51.9	52.3	-	-
28/02/16 17:00	1	53.3	47.4	52.0	53.3	-	-
28/02/16 18:00	1	57.0	56.0	50.1	57.0	-	-
28/02/16 19:00	2	61.8	60.5	56.0	-	61.8	-
28/02/16 20:00	2	62.3	61.7	53.9	-	62.3	-
28/02/16 21:00	-	54.4	-	54.4	-	54.4	-
28/02/16 22:00	2	63.2	62.3	55.8	-	63.2	-
28/02/16 23:00	-	57.9	-	57.9	-	-	57.9
	18	57.0	57.4	53.2	54.9	61.4	55.6

Location: Roodt/Syr NMT # 1



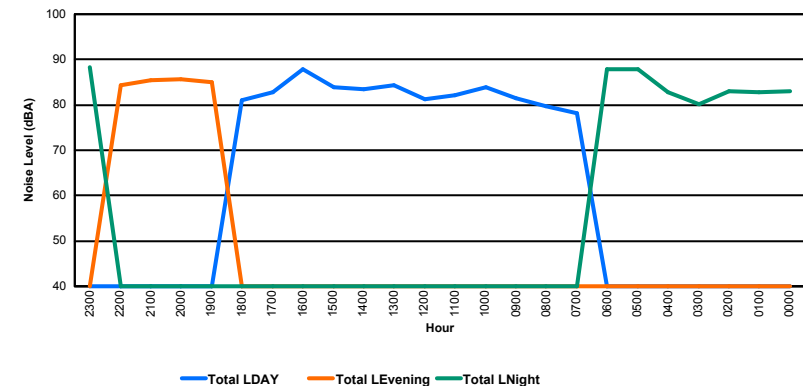
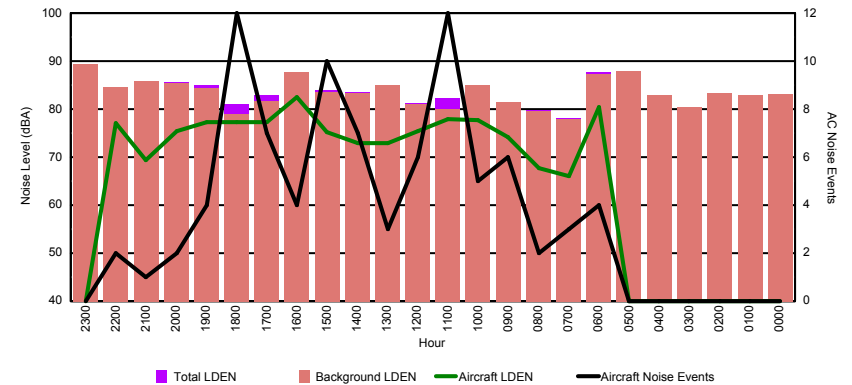


Luxembourg Airport Noise Distribution by Hour

Between 28/02/2016 00:00:00 and 28/02/2016 23:59:59 (Local Time)

Day	Aircraft Events	Total LDEN dB (A)	Aircraft LDEN dB(A)	Background LDEN dB(A)	Total LDay dB(A)	Total LEvening dB(A)	Total LNight dB (A)
28/02/16 0:00	-	83.0	-	83.2	-	-	83.0
28/02/16 1:00	-	82.8	-	82.9	-	-	82.8
28/02/16 2:00	-	83.1	-	83.3	-	-	83.1
28/02/16 3:00	-	80.2	-	80.5	-	-	80.2
28/02/16 4:00	-	82.7	-	83.0	-	-	82.7
28/02/16 5:00	-	87.8	-	88.0	-	-	87.8
28/02/16 6:00	4	87.8	80.4	87.3	-	-	87.8
28/02/16 7:00	3	78.1	66.0	77.9	78.1	-	-
28/02/16 8:00	2	79.7	67.7	79.5	79.7	-	-
28/02/16 9:00	6	81.4	74.1	81.4	81.4	-	-
28/02/16 10:00	5	83.8	77.8	85.1	83.8	-	-
28/02/16 11:00	12	82.2	77.9	80.1	82.2	-	-
28/02/16 12:00	6	81.3	75.4	81.0	81.3	-	-
28/02/16 13:00	3	84.3	73.0	84.9	84.3	-	-
28/02/16 14:00	7	83.5	73.0	83.3	83.5	-	-
28/02/16 15:00	10	84.0	75.3	83.6	84.0	-	-
28/02/16 16:00	4	87.8	82.6	87.8	87.8	-	-
28/02/16 17:00	7	82.9	77.3	81.6	82.9	-	-
28/02/16 18:00	12	81.0	77.3	78.9	81.0	-	-
28/02/16 19:00	4	85.0	77.2	84.4	-	85.0	-
28/02/16 20:00	2	85.7	75.4	85.5	-	85.7	-
28/02/16 21:00	1	85.5	69.4	85.9	-	85.5	-
28/02/16 22:00	2	84.4	77.1	84.6	-	84.4	-
28/02/16 23:00	-	88.3	-	89.3	-	-	88.3
	90	84.4	76.8	84.4	83.2	85.2	85.4

Location: DVOR NMT # 2



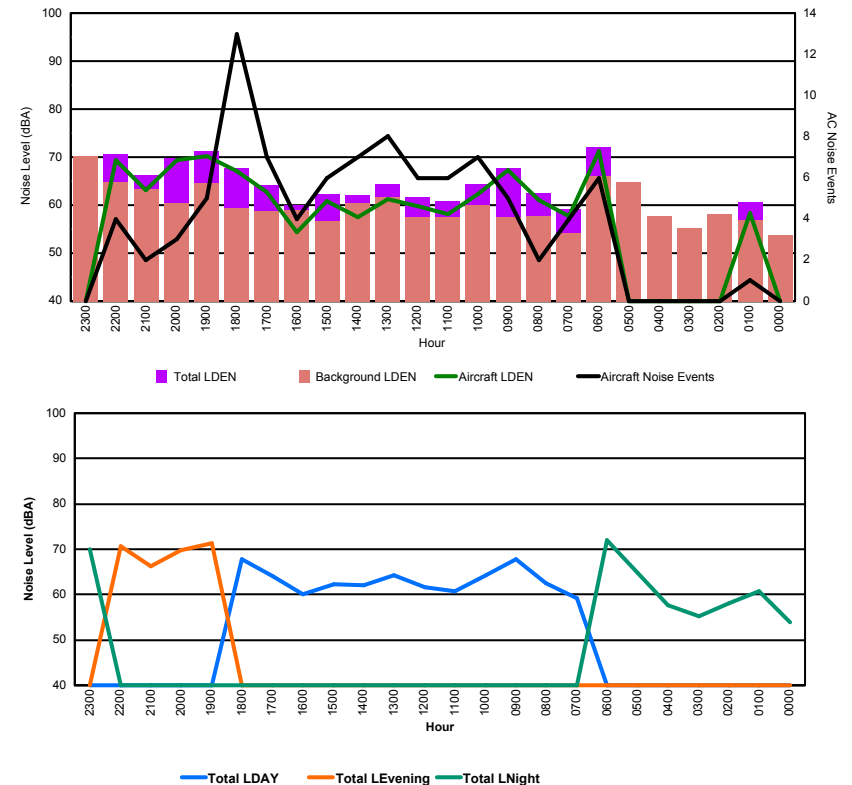


Luxembourg Airport Noise Distribution by Hour

Between 28/02/2016 00:00:00 and 28/02/2016 23:59:59 (Local Time)

Day	Aircraft Events	Total LDEN dB (A)	Aircraft LDEN dB(A)	Background LDEN dB(A)	Total LDay dB(A)	Total LEvening dB(A)	Total LNight dB (A)
28/02/16 0:00	-	53.8	-	53.8	-	-	53.8
28/02/16 1:00	1	60.7	58.4	56.9	-	-	60.7
28/02/16 2:00	-	58.2	-	58.2	-	-	58.2
28/02/16 3:00	-	55.2	-	55.2	-	-	55.2
28/02/16 4:00	-	57.7	-	57.7	-	-	57.7
28/02/16 5:00	-	64.8	-	64.8	-	-	64.8
28/02/16 6:00	6	72.1	71.2	66.1	-	-	72.1
28/02/16 7:00	4	59.2	57.7	54.1	59.2	-	-
28/02/16 8:00	2	62.5	61.0	57.7	62.5	-	-
28/02/16 9:00	5	67.7	67.3	57.6	67.7	-	-
28/02/16 10:00	7	64.3	62.3	60.0	64.3	-	-
28/02/16 11:00	6	60.8	58.1	57.5	60.8	-	-
28/02/16 12:00	6	61.7	59.7	57.5	61.7	-	-
28/02/16 13:00	8	64.3	61.2	61.7	64.3	-	-
28/02/16 14:00	7	62.1	57.4	60.4	62.1	-	-
28/02/16 15:00	6	62.3	60.9	56.7	62.3	-	-
28/02/16 16:00	4	60.1	54.3	59.0	60.1	-	-
28/02/16 17:00	7	64.1	62.7	58.8	64.1	-	-
28/02/16 18:00	13	67.7	67.0	59.4	67.7	-	-
28/02/16 19:00	5	71.3	70.3	64.6	-	71.3	-
28/02/16 20:00	3	69.8	69.3	60.5	-	69.8	-
28/02/16 21:00	2	66.2	63.1	63.3	-	66.2	-
28/02/16 22:00	4	70.6	69.4	64.7	-	70.6	-
28/02/16 23:00	-	70.1	-	70.2	-	-	70.1
	96	66.2	65.5	62.0	63.9	69.9	66.1

Location: Mid Runway NMT # 3



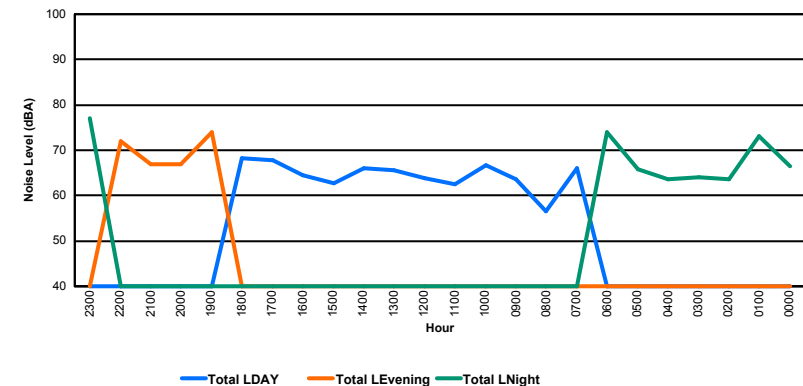
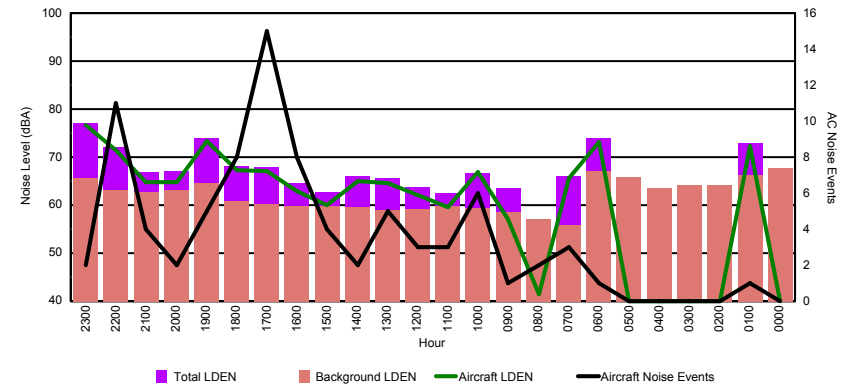


Luxembourg Airport Noise Distribution by Hour

Between 28/02/2016 00:00:00 and 28/02/2016 23:59:59 (Local Time)

Day	Aircraft Events	Total LDEN dB (A)	Aircraft LDEN dB(A)	Background LDEN dB(A)	Total LDay dB(A)	Total LEvening dB(A)	Total LNight dB (A)
28/02/16 0:00	-	66.5	-	67.8	-	-	66.5
28/02/16 1:00	1	73.0	72.2	66.2	-	-	73.0
28/02/16 2:00	-	63.5	-	64.1	-	-	63.5
28/02/16 3:00	-	64.0	-	64.1	-	-	64.0
28/02/16 4:00	-	63.5	-	63.5	-	-	63.5
28/02/16 5:00	-	65.8	-	65.9	-	-	65.8
28/02/16 6:00	1	74.0	73.1	67.1	-	-	74.0
28/02/16 7:00	3	66.0	65.6	55.9	66.0	-	-
28/02/16 8:00	2	56.6	41.5	57.0	56.6	-	-
28/02/16 9:00	1	63.5	57.1	58.6	63.5	-	-
28/02/16 10:00	6	66.6	66.8	59.3	66.6	-	-
28/02/16 11:00	3	62.6	59.5	59.8	62.6	-	-
28/02/16 12:00	3	63.8	62.0	59.2	63.8	-	-
28/02/16 13:00	5	65.6	64.6	58.9	65.6	-	-
28/02/16 14:00	2	66.0	64.9	59.5	66.0	-	-
28/02/16 15:00	4	62.8	59.9	59.7	62.8	-	-
28/02/16 16:00	8	64.6	63.0	59.7	64.6	-	-
28/02/16 17:00	15	67.9	67.1	60.2	67.9	-	-
28/02/16 18:00	8	68.2	67.3	60.8	68.2	-	-
28/02/16 19:00	5	73.9	73.4	64.5	-	73.9	-
28/02/16 20:00	2	67.0	64.7	63.2	-	67.0	-
28/02/16 21:00	4	66.9	64.7	62.8	-	66.9	-
28/02/16 22:00	11	72.1	71.5	63.2	-	72.1	-
28/02/16 23:00	2	77.0	76.6	65.7	-	-	77.0
	86	69.2	69.1	63.1	65.3	71.0	71.4

Location: NDB-Hamm NMT # 4





Luxembourg Airport Noise Distribution by Hour

Between 28/02/2016 00:00:00 and 28/02/2016 23:59:59 (Local Time)

Day	Aircraft Events	Total LDEN dB (A)	Aircraft LDEN dB(A)	Background LDEN dB(A)	Total LDay dB(A)	Total LEvening dB(A)	Total LNight dB (A)
28/02/16 0:00	-	73.8	-	74.1	-	-	73.8
28/02/16 1:00	1	69.6	66.7	67.6	-	-	69.6
28/02/16 2:00	-	64.5	-	65.4	-	-	64.5
28/02/16 3:00	-	65.2	-	65.4	-	-	65.2
28/02/16 4:00	-	63.4	-	63.5	-	-	63.4
28/02/16 5:00	-	65.4	-	65.4	-	-	65.4
28/02/16 6:00	1	69.8	66.8	67.1	-	-	69.8
28/02/16 7:00	1	61.5	58.9	58.7	61.5	-	-
28/02/16 8:00	1	58.6	38.6	59.6	58.6	-	-
28/02/16 9:00	2	62.1	58.8	59.5	62.1	-	-
28/02/16 10:00	5	61.1	56.3	59.5	61.1	-	-
28/02/16 11:00	2	61.2	52.3	60.7	61.2	-	-
28/02/16 12:00	3	60.4	55.3	58.8	60.4	-	-
28/02/16 13:00	3	62.5	56.4	61.4	62.5	-	-
28/02/16 14:00	2	61.5	57.6	59.3	61.5	-	-
28/02/16 15:00	4	62.0	58.9	59.2	62.0	-	-
28/02/16 16:00	10	63.1	58.5	61.5	63.1	-	-
28/02/16 17:00	13	62.9	60.3	59.9	62.9	-	-
28/02/16 18:00	6	62.0	59.2	58.8	62.0	-	-
28/02/16 19:00	5	67.9	66.2	63.3	-	67.9	-
28/02/16 20:00	2	64.1	58.4	62.8	-	64.1	-
28/02/16 21:00	4	63.4	57.2	62.3	-	63.4	-
28/02/16 22:00	10	66.5	64.7	62.0	-	66.5	-
28/02/16 23:00	2	70.6	68.8	66.1	-	-	70.6
	77	66.2	62.3	64.8	61.7	65.9	69.2

Location: Gare centrale NMT # 5

