

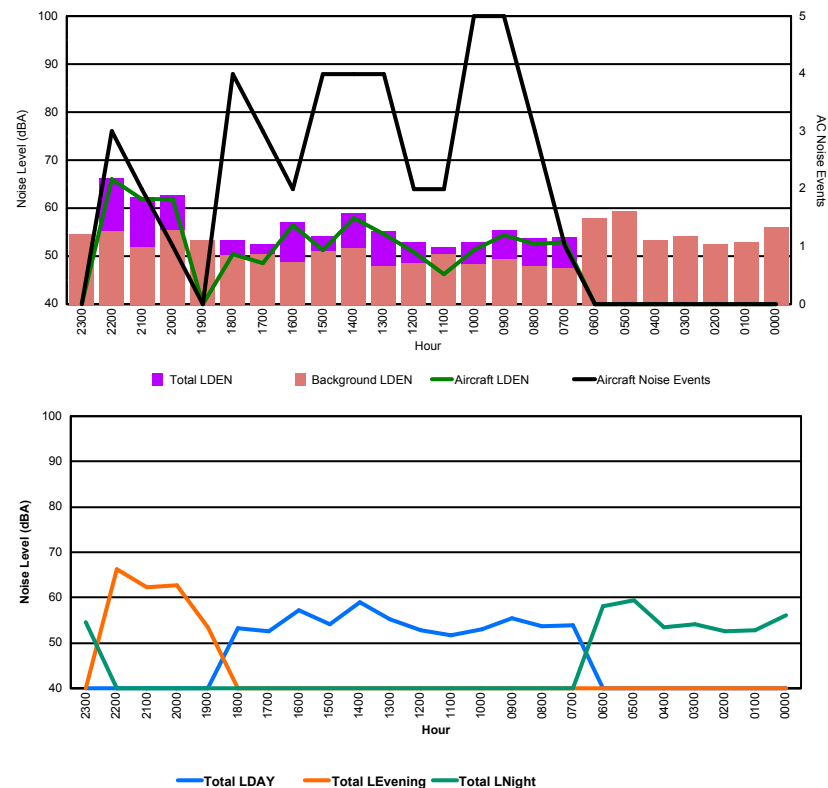


## Luxembourg Airport Noise Distribution by Hour

Between 24/02/2016 00:00:00 and 24/02/2016 23:59:59 (Local Time)

Day	Aircraft Events	Total LDEN dB (A)	Aircraft LDEN dB(A)	Background LDEN dB(A)	Total LDay dB(A)	Total LEvening dB(A)	Total LNight dB (A)
24/02/16 0:00	-	56.1	-	56.1	-	-	56.1
24/02/16 1:00	-	52.9	-	52.9	-	-	52.9
24/02/16 2:00	-	52.5	-	52.5	-	-	52.5
24/02/16 3:00	-	54.2	-	54.2	-	-	54.2
24/02/16 4:00	-	53.4	-	53.4	-	-	53.4
24/02/16 5:00	-	59.4	-	59.4	-	-	59.4
24/02/16 6:00	-	58.0	-	58.0	-	-	58.0
24/02/16 7:00	1	54.0	52.9	47.6	54.0	-	-
24/02/16 8:00	3	53.7	52.4	47.9	53.7	-	-
24/02/16 9:00	5	55.5	54.3	49.3	55.5	-	-
24/02/16 10:00	5	53.0	51.2	48.4	53.0	-	-
24/02/16 11:00	2	51.8	46.3	50.5	51.8	-	-
24/02/16 12:00	2	52.9	50.9	48.6	52.9	-	-
24/02/16 13:00	4	55.3	54.5	48.0	55.3	-	-
24/02/16 14:00	4	58.9	58.0	51.7	58.9	-	-
24/02/16 15:00	4	54.1	51.3	51.1	54.1	-	-
24/02/16 16:00	2	57.1	56.5	48.7	57.1	-	-
24/02/16 17:00	3	52.5	48.5	50.4	52.5	-	-
24/02/16 18:00	4	53.3	50.4	50.3	53.3	-	-
24/02/16 19:00	-	53.4	-	53.4	-	53.4	-
24/02/16 20:00	1	62.8	61.8	55.4	-	62.8	-
24/02/16 21:00	2	62.2	61.9	51.8	-	62.2	-
24/02/16 22:00	3	66.3	66.0	55.3	-	66.3	-
24/02/16 23:00	-	54.5	-	54.5	-	-	54.5
	<b>45</b>	<b>57.9</b>	<b>58.1</b>	<b>53.3</b>	<b>54.8</b>	<b>63.0</b>	<b>55.8</b>

Location: Roodt/Syr NMT # 1



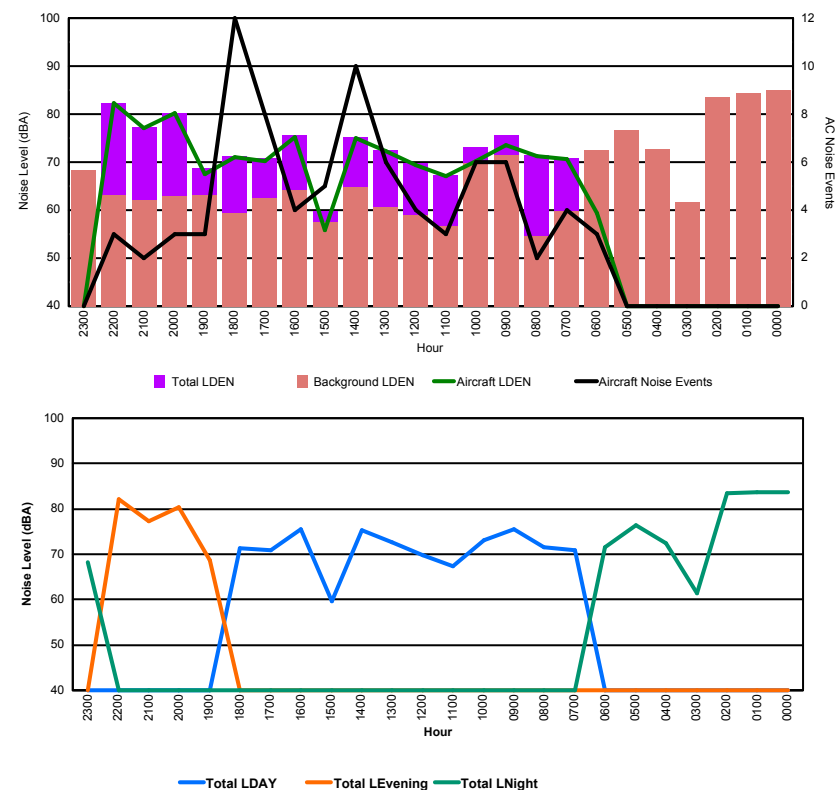


## Luxembourg Airport Noise Distribution by Hour

Between 24/02/2016 00:00:00 and 24/02/2016 23:59:59 (Local Time)

Day	Aircraft Events	Total LDEN dB (A)	Aircraft LDEN dB(A)	Background LDEN dB(A)	Total LDay dB(A)	Total LEvening dB(A)	Total LNight dB (A)
24/02/16 0:00	-	83.7	-	85.0	-	-	83.7
24/02/16 1:00	-	83.6	-	84.4	-	-	83.6
24/02/16 2:00	-	83.5	-	83.6	-	-	83.5
24/02/16 3:00	-	61.5	-	61.6	-	-	61.5
24/02/16 4:00	-	72.4	-	72.8	-	-	72.4
24/02/16 5:00	-	76.4	-	76.6	-	-	76.4
24/02/16 6:00	3	71.6	59.4	72.5	-	-	71.6
24/02/16 7:00	4	70.8	70.6	59.8	70.8	-	-
24/02/16 8:00	2	71.5	71.3	54.6	71.5	-	-
24/02/16 9:00	6	75.6	73.6	71.5	75.6	-	-
24/02/16 10:00	6	73.1	70.3	69.8	73.1	-	-
24/02/16 11:00	3	67.3	67.0	56.7	67.3	-	-
24/02/16 12:00	4	69.7	69.4	58.9	69.7	-	-
24/02/16 13:00	6	72.6	72.3	60.6	72.6	-	-
24/02/16 14:00	10	75.3	75.0	64.7	75.3	-	-
24/02/16 15:00	5	59.7	55.8	57.6	59.7	-	-
24/02/16 16:00	4	75.6	75.3	64.1	75.6	-	-
24/02/16 17:00	8	70.8	70.2	62.5	70.8	-	-
24/02/16 18:00	12	71.3	71.1	59.3	71.3	-	-
24/02/16 19:00	3	68.7	67.4	63.1	-	68.7	-
24/02/16 20:00	3	80.3	80.2	63.0	-	80.3	-
24/02/16 21:00	2	77.2	77.1	62.0	-	77.2	-
24/02/16 22:00	3	82.2	82.2	63.1	-	82.2	-
24/02/16 23:00	-	68.3	-	68.4	-	-	68.3
	<b>84</b>	<b>77.4</b>	<b>74.7</b>	<b>76.0</b>	<b>72.5</b>	<b>79.2</b>	<b>79.8</b>

Location: DVOR NMT # 2



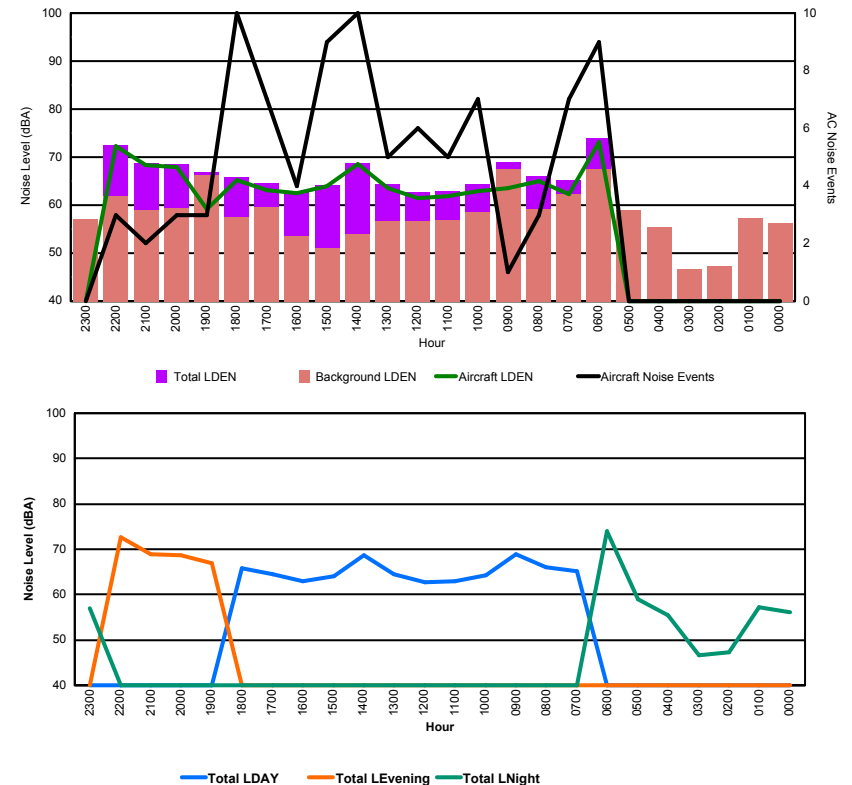


## Luxembourg Airport Noise Distribution by Hour

Between 24/02/2016 00:00:00 and 24/02/2016 23:59:59 (Local Time)

Day	Aircraft Events	Total LDEN dB (A)	Aircraft LDEN dB(A)	Background LDEN dB(A)	Total LDay dB(A)	Total LEvening dB(A)	Total LNight dB (A)
24/02/16 0:00	-	56.2	-	56.3	-	-	56.2
24/02/16 1:00	-	57.1	-	57.2	-	-	57.1
24/02/16 2:00	-	47.3	-	47.3	-	-	47.3
24/02/16 3:00	-	46.6	-	46.6	-	-	46.6
24/02/16 4:00	-	55.5	-	55.5	-	-	55.5
24/02/16 5:00	-	59.0	-	59.0	-	-	59.0
24/02/16 6:00	9	74.0	73.2	67.6	-	-	74.0
24/02/16 7:00	7	65.2	62.2	62.2	65.2	-	-
24/02/16 8:00	3	66.0	65.0	59.2	66.0	-	-
24/02/16 9:00	1	68.9	63.5	67.4	68.9	-	-
24/02/16 10:00	7	64.3	63.0	58.5	64.3	-	-
24/02/16 11:00	5	63.0	61.9	56.9	63.0	-	-
24/02/16 12:00	6	62.7	61.5	56.7	62.7	-	-
24/02/16 13:00	5	64.4	63.6	56.6	64.4	-	-
24/02/16 14:00	10	68.7	68.6	54.0	68.7	-	-
24/02/16 15:00	9	64.1	63.9	51.1	64.1	-	-
24/02/16 16:00	4	62.9	62.4	53.6	62.9	-	-
24/02/16 17:00	7	64.6	63.1	59.5	64.6	-	-
24/02/16 18:00	10	65.8	65.2	57.4	65.8	-	-
24/02/16 19:00	3	66.9	59.1	66.2	-	66.9	-
24/02/16 20:00	3	68.6	68.0	59.3	-	68.6	-
24/02/16 21:00	2	68.8	68.4	58.9	-	68.8	-
24/02/16 22:00	3	72.6	72.2	61.8	-	72.6	-
24/02/16 23:00	-	57.0	-	57.1	-	-	57.0
	<b>94</b>	<b>66.6</b>	<b>66.9</b>	<b>60.7</b>	<b>65.5</b>	<b>69.8</b>	<b>65.4</b>

Location: Mid Runway NMT # 3



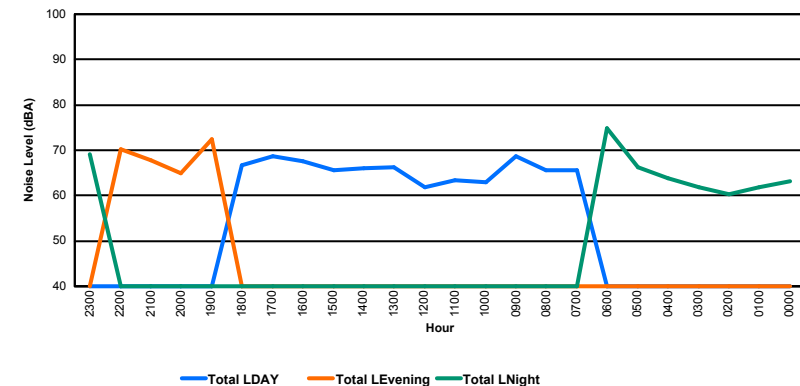
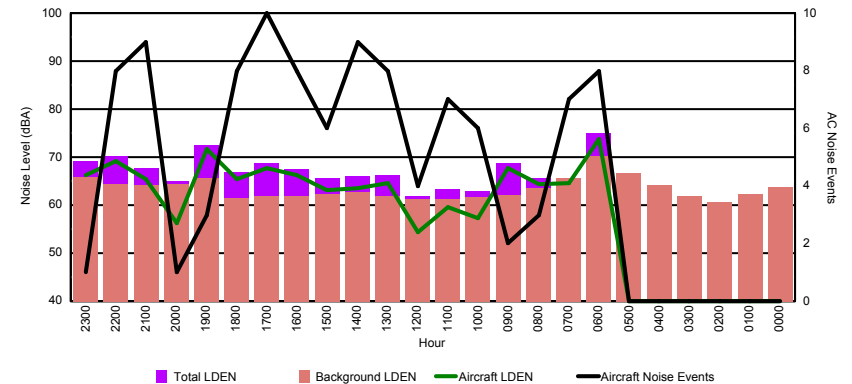


## Luxembourg Airport Noise Distribution by Hour

Between 24/02/2016 00:00:00 and 24/02/2016 23:59:59 (Local Time)

Day	Aircraft Events	Total LDEN dB (A)	Aircraft LDEN dB(A)	Background LDEN dB(A)	Total LDay dB(A)	Total LEvening dB(A)	Total LNight dB (A)
24/02/16 0:00	-	63.1	-	63.7	-	-	63.1
24/02/16 1:00	-	61.8	-	62.3	-	-	61.8
24/02/16 2:00	-	60.3	-	60.6	-	-	60.3
24/02/16 3:00	-	61.9	-	61.9	-	-	61.9
24/02/16 4:00	-	63.8	-	64.1	-	-	63.8
24/02/16 5:00	-	66.2	-	66.6	-	-	66.2
24/02/16 6:00	8	74.9	73.8	70.3	-	-	74.9
24/02/16 7:00	7	65.7	64.5	65.7	65.7	-	-
24/02/16 8:00	3	65.7	64.3	63.5	65.7	-	-
24/02/16 9:00	2	68.7	67.7	62.0	68.7	-	-
24/02/16 10:00	6	62.9	57.3	61.7	62.9	-	-
24/02/16 11:00	7	63.4	59.6	61.3	63.4	-	-
24/02/16 12:00	4	61.9	54.3	61.2	61.9	-	-
24/02/16 13:00	8	66.3	64.6	61.9	66.3	-	-
24/02/16 14:00	9	66.0	63.6	62.7	66.0	-	-
24/02/16 15:00	6	65.6	63.1	62.3	65.6	-	-
24/02/16 16:00	8	67.6	66.3	61.9	67.6	-	-
24/02/16 17:00	10	68.7	67.8	61.8	68.7	-	-
24/02/16 18:00	8	66.8	65.4	61.4	66.8	-	-
24/02/16 19:00	3	72.5	71.6	65.6	-	72.5	-
24/02/16 20:00	1	65.0	56.2	64.4	-	65.0	-
24/02/16 21:00	9	67.8	65.5	64.2	-	67.8	-
24/02/16 22:00	8	70.2	69.1	64.3	-	70.2	-
24/02/16 23:00	1	69.1	66.3	65.8	-	-	69.1
	<b>108</b>	<b>67.6</b>	<b>66.9</b>	<b>64.1</b>	<b>66.2</b>	<b>69.7</b>	<b>68.1</b>

Location: NDB-Hamm NMT # 4





## Luxembourg Airport Noise Distribution by Hour

Between 24/02/2016 00:00:00 and 24/02/2016 23:59:59 (Local Time)

Day	Aircraft Events	Total LDEN dB (A)	Aircraft LDEN dB(A)	Background LDEN dB(A)	Total LDay dB(A)	Total LEvening dB(A)	Total LNight dB (A)
24/02/16 0:00	-	64.2	-	65.4	-	-	64.2
24/02/16 1:00	-	62.7	-	63.2	-	-	62.7
24/02/16 2:00	-	62.2	-	62.4	-	-	62.2
24/02/16 3:00	-	62.5	-	62.6	-	-	62.5
24/02/16 4:00	-	67.3	-	67.5	-	-	67.3
24/02/16 5:00	-	69.3	-	70.5	-	-	69.3
24/02/16 6:00	3	72.9	67.8	73.1	-	-	72.9
24/02/16 7:00	4	64.3	57.6	68.0	64.3	-	-
24/02/16 8:00	2	68.7	56.8	72.1	68.7	-	-
24/02/16 9:00	2	65.5	58.2	65.6	65.5	-	-
24/02/16 10:00	8	63.8	55.0	64.1	63.8	-	-
24/02/16 11:00	6	64.6	55.3	65.0	64.6	-	-
24/02/16 12:00	4	65.0	49.9	65.3	65.0	-	-
24/02/16 13:00	9	65.6	61.1	64.8	65.6	-	-
24/02/16 14:00	8	64.2	58.5	63.6	64.2	-	-
24/02/16 15:00	6	63.3	57.0	62.6	63.3	-	-
24/02/16 16:00	9	67.7	66.1	63.2	67.7	-	-
24/02/16 17:00	10	68.4	60.6	67.9	68.4	-	-
24/02/16 18:00	8	62.8	58.7	60.9	62.8	-	-
24/02/16 19:00	3	68.4	62.4	67.3	-	68.4	-
24/02/16 20:00	1	65.4	48.6	65.4	-	65.4	-
24/02/16 21:00	9	65.6	58.8	64.7	-	65.6	-
24/02/16 22:00	7	65.8	62.7	63.2	-	65.8	-
24/02/16 23:00	1	67.7	60.3	66.9	-	-	67.7
	100	66.6	61.0	66.9	65.8	66.5	67.7

