

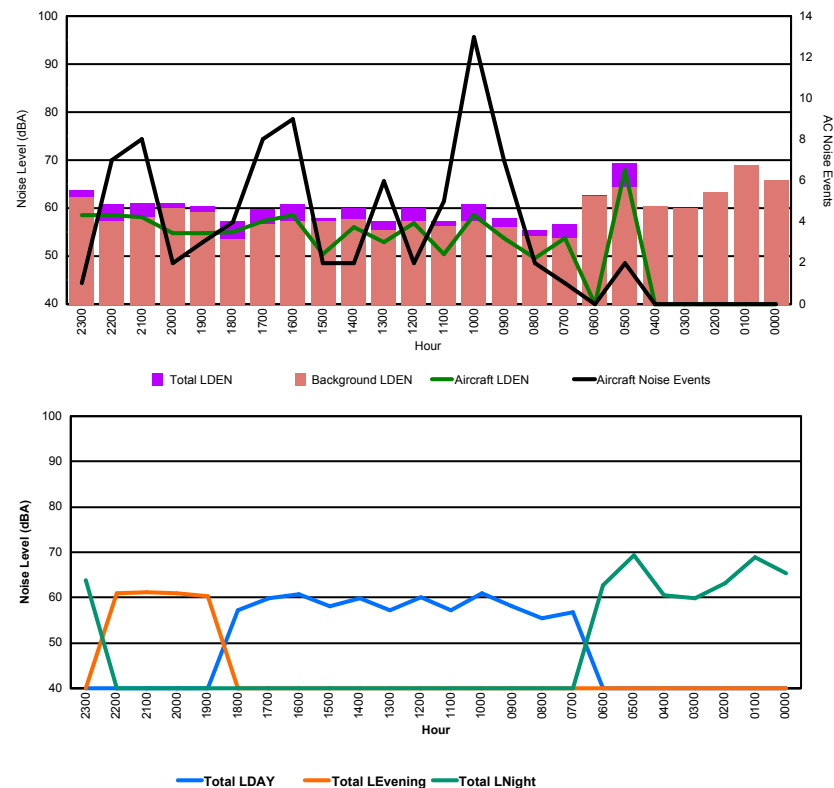


Luxembourg Airport Noise Distribution by Hour

Between 22/02/2016 00:00:00 and 22/02/2016 23:59:59 (Local Time)

Day	Aircraft Events	Total LDEN dB (A)	Aircraft LDEN dB(A)	Background LDEN dB(A)	Total LDay dB(A)	Total LEvening dB(A)	Total LNight dB (A)
22/02/16 0:00	-	65.4	-	65.8	-	-	65.4
22/02/16 1:00	-	68.9	-	69.0	-	-	68.9
22/02/16 2:00	-	63.1	-	63.3	-	-	63.1
22/02/16 3:00	-	59.9	-	59.9	-	-	59.9
22/02/16 4:00	-	60.5	-	60.5	-	-	60.5
22/02/16 5:00	2	69.4	67.9	64.3	-	-	69.4
22/02/16 6:00	-	62.7	-	62.6	-	-	62.7
22/02/16 7:00	1	56.7	53.7	53.8	56.7	-	-
22/02/16 8:00	2	55.4	49.6	54.2	55.4	-	-
22/02/16 9:00	7	58.0	53.7	56.1	58.0	-	-
22/02/16 10:00	13	60.9	58.6	57.3	60.9	-	-
22/02/16 11:00	5	57.2	50.4	56.3	57.2	-	-
22/02/16 12:00	2	60.0	56.8	57.2	60.0	-	-
22/02/16 13:00	6	57.3	53.0	55.4	57.3	-	-
22/02/16 14:00	2	59.9	56.1	57.7	59.9	-	-
22/02/16 15:00	2	58.0	50.4	57.2	58.0	-	-
22/02/16 16:00	9	60.8	58.6	57.3	60.8	-	-
22/02/16 17:00	8	59.8	57.2	56.6	59.8	-	-
22/02/16 18:00	4	57.3	55.0	53.5	57.3	-	-
22/02/16 19:00	3	60.4	54.7	59.1	-	60.4	-
22/02/16 20:00	2	61.0	54.7	59.9	-	61.0	-
22/02/16 21:00	8	61.1	58.2	58.1	-	61.1	-
22/02/16 22:00	7	60.9	58.6	57.2	-	60.9	-
22/02/16 23:00	1	63.8	58.6	62.2	-	-	63.8
	84	62.5	58.6	61.0	58.8	60.9	65.5

Location: Roodt/Syr NMT # 1



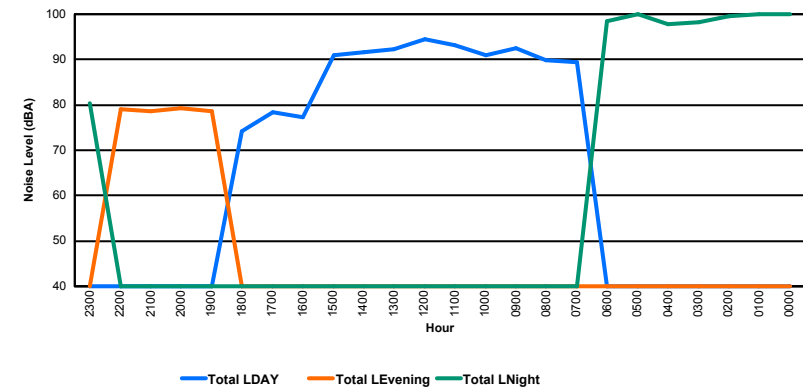
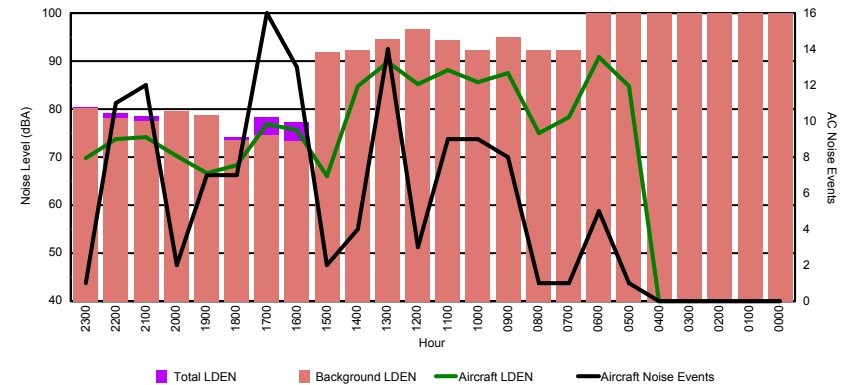


Luxembourg Airport Noise Distribution by Hour

Between 22/02/2016 00:00:00 and 22/02/2016 23:59:59 (Local Time)

Day	Aircraft Events	Total LDEN dB (A)	Aircraft LDEN dB(A)	Background LDEN dB(A)	Total LDay dB(A)	Total LEvening dB(A)	Total LNight dB (A)
22/02/16 0:00	-	102.7	-	105.2	-	-	102.7
22/02/16 1:00	-	101.6	-	104.9	-	-	101.6
22/02/16 2:00	-	99.6	-	101.5	-	-	99.6
22/02/16 3:00	-	98.3	-	101.0	-	-	98.3
22/02/16 4:00	-	97.8	-	100.1	-	-	97.8
22/02/16 5:00	1	101.0	84.7	103.2	-	-	101.0
22/02/16 6:00	5	98.4	90.8	101.4	-	-	98.4
22/02/16 7:00	1	89.5	78.3	92.3	89.5	-	-
22/02/16 8:00	1	89.9	75.1	92.4	89.9	-	-
22/02/16 9:00	8	92.5	87.6	95.0	92.5	-	-
22/02/16 10:00	9	91.0	85.6	92.4	91.0	-	-
22/02/16 11:00	9	93.1	88.2	94.4	93.1	-	-
22/02/16 12:00	3	94.5	85.2	96.6	94.5	-	-
22/02/16 13:00	14	92.2	89.8	94.5	92.2	-	-
22/02/16 14:00	4	91.6	84.8	92.3	91.6	-	-
22/02/16 15:00	2	91.0	66.1	91.9	91.0	-	-
22/02/16 16:00	13	77.2	75.6	73.4	77.2	-	-
22/02/16 17:00	16	78.3	76.9	74.5	78.3	-	-
22/02/16 18:00	7	74.2	68.4	73.5	74.2	-	-
22/02/16 19:00	7	78.5	66.6	78.7	-	78.5	-
22/02/16 20:00	2	79.3	70.2	79.5	-	79.3	-
22/02/16 21:00	12	78.5	74.2	77.6	-	78.5	-
22/02/16 22:00	11	79.1	73.8	78.2	-	79.1	-
22/02/16 23:00	1	80.4	69.8	80.3	-	-	80.4
	126	95.7	84.2	98.2	90.8	78.9	99.7

Location: DVOR NMT # 2



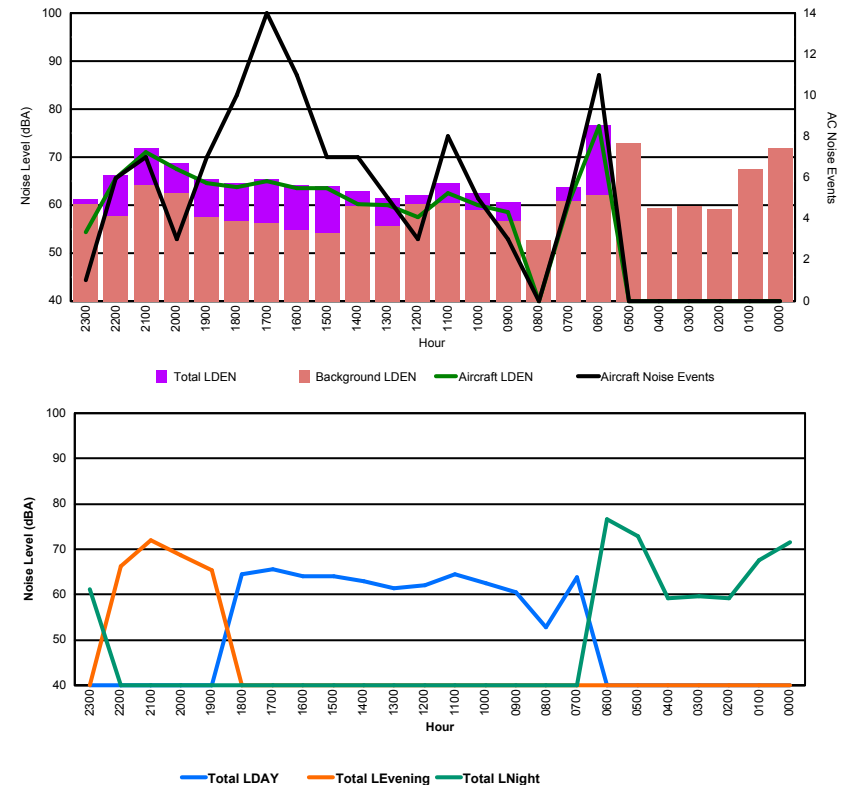


Luxembourg Airport Noise Distribution by Hour

Between 22/02/2016 00:00:00 and 22/02/2016 23:59:59 (Local Time)

Day	Aircraft Events	Total LDEN dB (A)	Aircraft LDEN dB(A)	Background LDEN dB(A)	Total LDay dB(A)	Total LEvening dB(A)	Total LNight dB (A)
22/02/16 0:00	-	71.6	-	71.8	-	-	71.6
22/02/16 1:00	-	67.5	-	67.6	-	-	67.5
22/02/16 2:00	-	59.1	-	59.2	-	-	59.1
22/02/16 3:00	-	59.7	-	59.7	-	-	59.7
22/02/16 4:00	-	59.3	-	59.3	-	-	59.3
22/02/16 5:00	-	72.9	-	72.9	-	-	72.9
22/02/16 6:00	11	76.7	76.5	62.1	-	-	76.7
22/02/16 7:00	5	63.8	60.7	60.8	63.8	-	-
22/02/16 8:00	-	52.7	-	52.8	52.7	-	-
22/02/16 9:00	3	60.6	58.5	56.6	60.6	-	-
22/02/16 10:00	5	62.6	60.1	59.0	62.6	-	-
22/02/16 11:00	8	64.5	62.5	60.4	64.5	-	-
22/02/16 12:00	3	62.0	57.4	60.2	62.0	-	-
22/02/16 13:00	5	61.4	60.0	55.7	61.4	-	-
22/02/16 14:00	7	63.0	60.2	59.8	63.0	-	-
22/02/16 15:00	7	64.0	63.5	54.1	64.0	-	-
22/02/16 16:00	11	64.1	63.6	54.8	64.1	-	-
22/02/16 17:00	14	65.5	65.0	56.2	65.5	-	-
22/02/16 18:00	10	64.5	63.8	56.7	64.5	-	-
22/02/16 19:00	7	65.4	64.6	57.5	-	65.4	-
22/02/16 20:00	3	68.7	67.6	62.4	-	68.7	-
22/02/16 21:00	7	71.9	71.1	64.2	-	71.9	-
22/02/16 22:00	6	66.2	65.6	57.7	-	66.2	-
22/02/16 23:00	1	61.2	54.4	60.2	-	-	61.2
	113	67.8	67.1	63.9	63.1	68.8	70.5

Location: Mid Runway NMT # 3



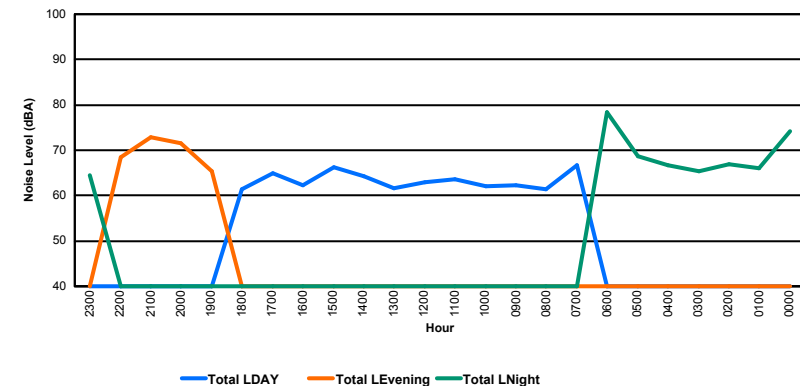
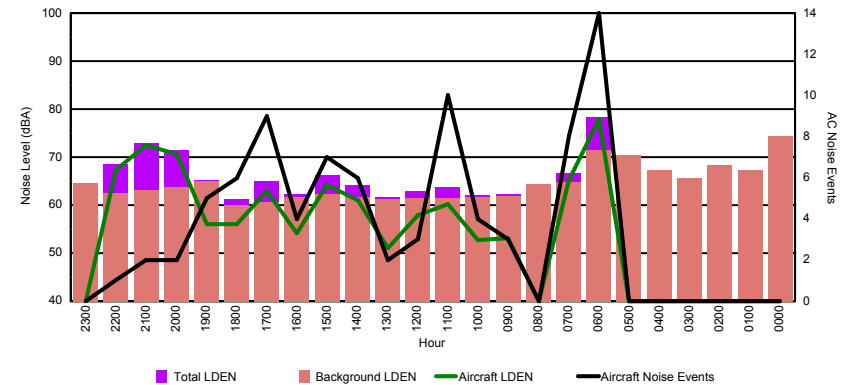


Luxembourg Airport Noise Distribution by Hour

Between 22/02/2016 00:00:00 and 22/02/2016 23:59:59 (Local Time)

Day	Aircraft Events	Total LDEN dB (A)	Aircraft LDEN dB(A)	Background LDEN dB(A)	Total LDay dB(A)	Total LEvening dB(A)	Total LNight dB (A)
22/02/16 0:00	-	74.2	-	74.4	-	-	74.2
22/02/16 1:00	-	66.0	-	67.2	-	-	66.0
22/02/16 2:00	-	67.0	-	68.3	-	-	67.0
22/02/16 3:00	-	65.4	-	65.6	-	-	65.4
22/02/16 4:00	-	66.8	-	67.3	-	-	66.8
22/02/16 5:00	-	68.7	-	70.4	-	-	68.7
22/02/16 6:00	14	78.3	77.9	71.5	-	-	78.3
22/02/16 7:00	8	66.6	65.2	64.8	66.6	-	-
22/02/16 8:00	-	61.5	-	64.4	61.5	-	-
22/02/16 9:00	3	62.2	53.1	61.9	62.2	-	-
22/02/16 10:00	4	62.1	52.7	61.6	62.1	-	-
22/02/16 11:00	10	63.7	60.2	61.5	63.7	-	-
22/02/16 12:00	3	62.9	58.0	61.4	62.9	-	-
22/02/16 13:00	2	61.6	51.0	61.3	61.6	-	-
22/02/16 14:00	6	64.2	61.1	61.7	64.2	-	-
22/02/16 15:00	7	66.2	64.2	62.3	66.2	-	-
22/02/16 16:00	4	62.2	54.1	61.6	62.2	-	-
22/02/16 17:00	9	64.9	63.0	60.7	64.9	-	-
22/02/16 18:00	6	61.3	56.0	60.1	61.3	-	-
22/02/16 19:00	5	65.3	56.1	64.9	-	65.3	-
22/02/16 20:00	2	71.5	70.7	63.7	-	71.5	-
22/02/16 21:00	2	72.9	72.4	63.1	-	72.9	-
22/02/16 22:00	1	68.5	67.3	62.4	-	68.5	-
22/02/16 23:00	-	64.6	-	64.6	-	-	64.6
	86	69.1	68.3	66.4	63.7	70.4	71.8

Location: NDB-Hamm NMT # 4





Luxembourg Airport Noise Distribution by Hour

Between 22/02/2016 00:00:00 and 22/02/2016 23:59:59 (Local Time)

Day	Aircraft Events	Total LDEN dB (A)	Aircraft LDEN dB(A)	Background LDEN dB(A)	Total LDay dB(A)	Total LEvening dB(A)	Total LNight dB (A)
22/02/16 0:00	-	70.7	-	71.3	-	-	70.7
22/02/16 1:00	-	66.7	-	67.7	-	-	66.7
22/02/16 2:00	-	66.7	-	67.6	-	-	66.7
22/02/16 3:00	-	63.9	-	64.0	-	-	63.9
22/02/16 4:00	-	65.4	-	65.6	-	-	65.4
22/02/16 5:00	-	69.1	-	70.2	-	-	69.1
22/02/16 6:00	6	72.6	69.5	71.7	-	-	72.6
22/02/16 7:00	7	69.5	61.3	70.6	69.5	-	-
22/02/16 8:00	-	64.1	-	66.9	64.1	-	-
22/02/16 9:00	1	65.6	41.8	66.1	65.6	-	-
22/02/16 10:00	4	64.2	50.0	64.8	64.2	-	-
22/02/16 11:00	7	62.5	53.3	62.3	62.5	-	-
22/02/16 12:00	1	63.2	50.7	63.3	63.2	-	-
22/02/16 13:00	2	64.3	42.6	64.7	64.3	-	-
22/02/16 14:00	6	64.1	56.1	64.3	64.1	-	-
22/02/16 15:00	4	63.4	55.5	63.2	63.4	-	-
22/02/16 16:00	1	62.5	41.6	62.6	62.5	-	-
22/02/16 17:00	4	62.4	53.3	62.1	62.4	-	-
22/02/16 18:00	5	66.7	48.8	66.8	66.7	-	-
22/02/16 19:00	2	67.1	51.9	67.1	-	67.1	-
22/02/16 20:00	1	68.5	60.3	67.8	-	68.5	-
22/02/16 21:00	2	68.9	60.7	68.3	-	68.9	-
22/02/16 22:00	1	65.4	56.2	65.1	-	65.4	-
22/02/16 23:00	-	68.7	-	68.8	-	-	68.7
	54	67.0	59.6	67.3	64.9	67.7	68.8

Location: Gare centrale NMT # 5

