

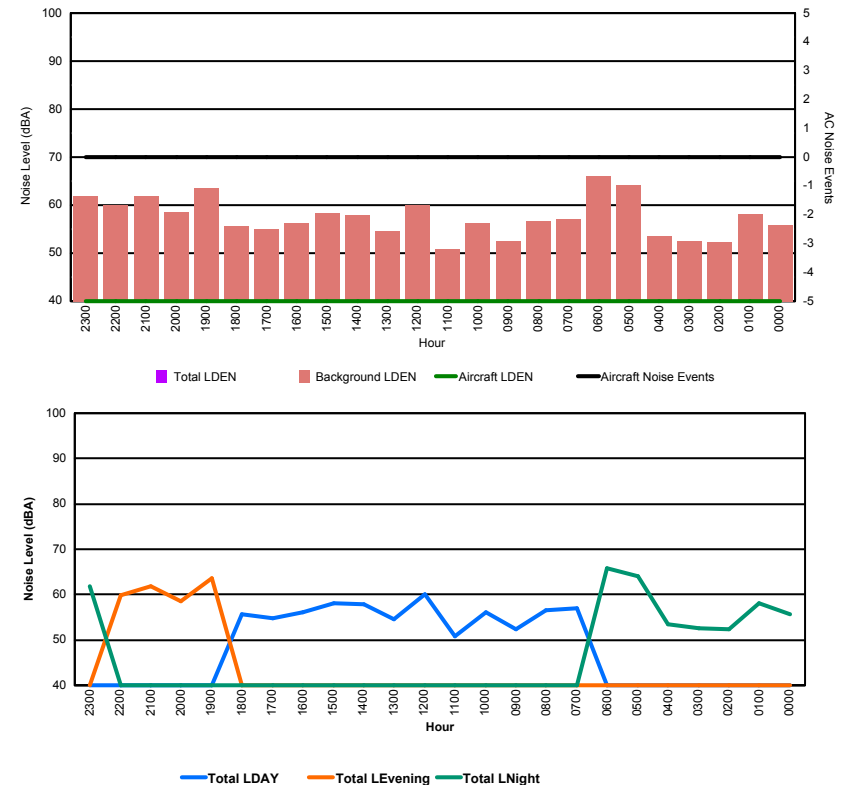


Luxembourg Airport Noise Distribution by Hour

Between 19/02/2016 00:00:00 and 19/02/2016 23:59:59 (Local Time)

Day	Aircraft Events	Total LDEN dB (A)	Aircraft LDEN dB(A)	Background LDEN dB(A)	Total LDay dB(A)	Total LEvening dB(A)	Total LNight dB (A)
19/02/16 0:00	-	55.7	-	55.8	-	-	55.7
19/02/16 1:00	-	58.1	-	58.2	-	-	58.1
19/02/16 2:00	-	52.3	-	52.3	-	-	52.3
19/02/16 3:00	-	52.5	-	52.5	-	-	52.5
19/02/16 4:00	-	53.5	-	53.5	-	-	53.5
19/02/16 5:00	-	64.1	-	64.2	-	-	64.1
19/02/16 6:00	-	65.9	-	66.0	-	-	65.9
19/02/16 7:00	-	57.0	-	57.0	57.0	-	-
19/02/16 8:00	-	56.6	-	56.6	56.6	-	-
19/02/16 9:00	-	52.4	-	52.5	52.4	-	-
19/02/16 10:00	-	56.2	-	56.3	56.2	-	-
19/02/16 11:00	-	50.8	-	50.8	50.8	-	-
19/02/16 12:00	-	60.0	-	60.0	60.0	-	-
19/02/16 13:00	-	54.5	-	54.6	54.5	-	-
19/02/16 14:00	-	57.9	-	58.0	57.9	-	-
19/02/16 15:00	-	58.2	-	58.3	58.2	-	-
19/02/16 16:00	-	56.2	-	56.3	56.2	-	-
19/02/16 17:00	-	54.7	-	54.9	54.7	-	-
19/02/16 18:00	-	55.6	-	55.7	55.6	-	-
19/02/16 19:00	-	63.5	-	63.5	-	63.5	-
19/02/16 20:00	-	58.5	-	58.5	-	58.5	-
19/02/16 21:00	-	61.8	-	61.9	-	61.8	-
19/02/16 22:00	-	59.9	-	59.9	-	59.9	-
19/02/16 23:00	-	61.9	-	61.9	-	-	61.9
	-	59.3	-	59.3	56.5	61.3	60.8

Location: Roodt/Syr NMT # 1



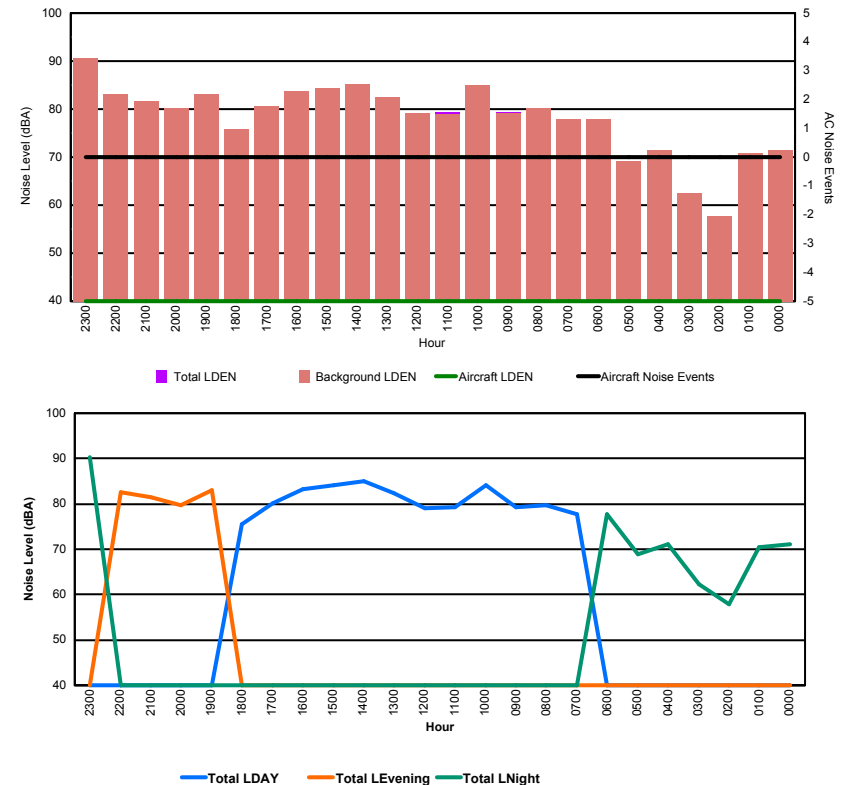


Luxembourg Airport Noise Distribution by Hour

Between 19/02/2016 00:00:00 and 19/02/2016 23:59:59 (Local Time)

Day	Aircraft Events	Total LDEN dB (A)	Aircraft LDEN dB(A)	Background LDEN dB(A)	Total LDay dB(A)	Total LEvening dB(A)	Total LNight dB (A)
19/02/16 0:00	-	71.2	-	71.5	-	-	71.2
19/02/16 1:00	-	70.4	-	70.8	-	-	70.4
19/02/16 2:00	-	57.8	-	57.8	-	-	57.8
19/02/16 3:00	-	62.3	-	62.4	-	-	62.3
19/02/16 4:00	-	71.1	-	71.5	-	-	71.1
19/02/16 5:00	-	68.8	-	69.2	-	-	68.8
19/02/16 6:00	-	77.8	-	78.0	-	-	77.8
19/02/16 7:00	-	77.8	-	77.9	77.8	-	-
19/02/16 8:00	-	79.7	-	80.3	79.7	-	-
19/02/16 9:00	-	79.3	-	79.1	79.3	-	-
19/02/16 10:00	-	84.2	-	85.0	84.2	-	-
19/02/16 11:00	-	79.3	-	79.0	79.3	-	-
19/02/16 12:00	-	79.1	-	79.1	79.1	-	-
19/02/16 13:00	-	82.4	-	82.5	82.4	-	-
19/02/16 14:00	-	84.9	-	85.2	84.9	-	-
19/02/16 15:00	-	84.2	-	84.3	84.2	-	-
19/02/16 16:00	-	83.3	-	83.8	83.3	-	-
19/02/16 17:00	-	80.2	-	80.6	80.2	-	-
19/02/16 18:00	-	75.6	-	75.8	75.6	-	-
19/02/16 19:00	-	83.0	-	83.2	-	83.0	-
19/02/16 20:00	-	79.6	-	80.2	-	79.6	-
19/02/16 21:00	-	81.5	-	81.7	-	81.5	-
19/02/16 22:00	-	82.5	-	83.2	-	82.5	-
19/02/16 23:00	-	90.4	-	90.7	-	-	90.4
	-	81.7	-	82.1	81.7	81.8	81.8

Location: DVOR NMT # 2



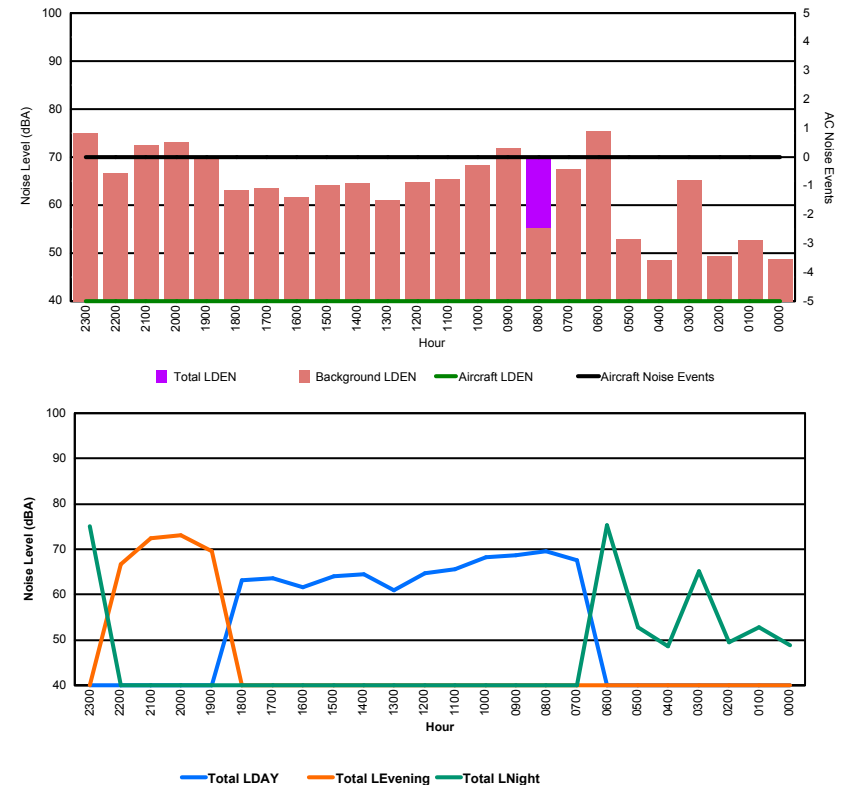


Luxembourg Airport Noise Distribution by Hour

Between 19/02/2016 00:00:00 and 19/02/2016 23:59:59 (Local Time)

Day	Aircraft Events	Total LDEN dB (A)	Aircraft LDEN dB(A)	Background LDEN dB(A)	Total LDay dB(A)	Total LEvening dB(A)	Total LNight dB (A)
19/02/16 0:00	-	48.8	-	48.8	-	-	48.8
19/02/16 1:00	-	52.8	-	52.8	-	-	52.8
19/02/16 2:00	-	49.4	-	49.4	-	-	49.4
19/02/16 3:00	-	65.2	-	65.2	-	-	65.2
19/02/16 4:00	-	48.6	-	48.6	-	-	48.6
19/02/16 5:00	-	52.9	-	52.9	-	-	52.9
19/02/16 6:00	-	75.3	-	75.4	-	-	75.3
19/02/16 7:00	-	67.5	-	67.5	67.5	-	-
19/02/16 8:00	-	69.5	-	55.3	69.5	-	-
19/02/16 9:00	-	68.6	-	71.9	68.6	-	-
19/02/16 10:00	-	68.3	-	68.4	68.3	-	-
19/02/16 11:00	-	65.5	-	65.5	65.5	-	-
19/02/16 12:00	-	64.7	-	64.7	64.7	-	-
19/02/16 13:00	-	60.9	-	61.0	60.9	-	-
19/02/16 14:00	-	64.6	-	64.6	64.6	-	-
19/02/16 15:00	-	64.1	-	64.1	64.1	-	-
19/02/16 16:00	-	61.6	-	61.6	61.6	-	-
19/02/16 17:00	-	63.5	-	63.5	63.5	-	-
19/02/16 18:00	-	63.2	-	63.2	63.2	-	-
19/02/16 19:00	-	69.5	-	69.5	-	69.5	-
19/02/16 20:00	-	73.2	-	73.2	-	73.2	-
19/02/16 21:00	-	72.5	-	72.5	-	72.5	-
19/02/16 22:00	-	66.7	-	66.7	-	66.7	-
19/02/16 23:00	-	75.1	-	75.1	-	-	75.1
	-	68.5	-	68.5	66.0	71.2	69.4

Location: Mid Runway NMT # 3



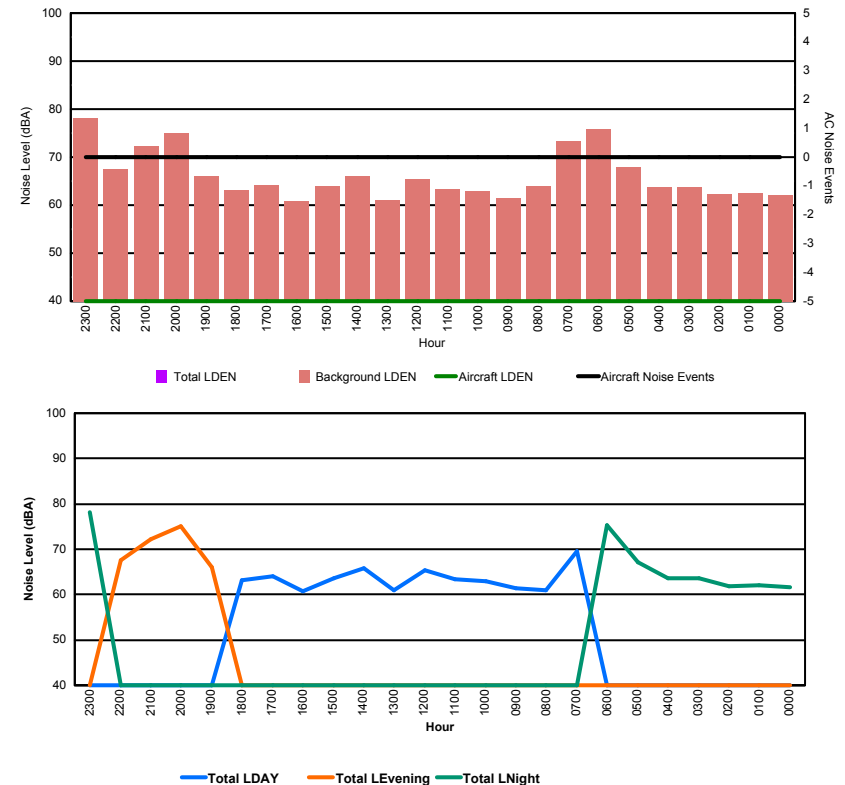


Luxembourg Airport Noise Distribution by Hour

Between 19/02/2016 00:00:00 and 19/02/2016 23:59:59 (Local Time)

Day	Aircraft Events	Total LDEN dB (A)	Aircraft LDEN dB(A)	Background LDEN dB(A)	Total LDay dB(A)	Total LEvening dB(A)	Total LNight dB (A)
19/02/16 0:00	-	61.7	-	62.0	-	-	61.7
19/02/16 1:00	-	62.0	-	62.4	-	-	62.0
19/02/16 2:00	-	61.9	-	62.3	-	-	61.9
19/02/16 3:00	-	63.6	-	63.7	-	-	63.6
19/02/16 4:00	-	63.5	-	63.7	-	-	63.5
19/02/16 5:00	-	67.1	-	67.9	-	-	67.1
19/02/16 6:00	-	75.3	-	75.8	-	-	75.3
19/02/16 7:00	-	69.6	-	73.3	69.6	-	-
19/02/16 8:00	-	60.9	-	64.0	60.9	-	-
19/02/16 9:00	-	61.3	-	61.4	61.3	-	-
19/02/16 10:00	-	62.9	-	63.0	62.9	-	-
19/02/16 11:00	-	63.3	-	63.4	63.3	-	-
19/02/16 12:00	-	65.4	-	65.5	65.4	-	-
19/02/16 13:00	-	60.9	-	61.0	60.9	-	-
19/02/16 14:00	-	65.9	-	66.0	65.9	-	-
19/02/16 15:00	-	63.6	-	64.0	63.6	-	-
19/02/16 16:00	-	60.7	-	60.8	60.7	-	-
19/02/16 17:00	-	64.0	-	64.2	64.0	-	-
19/02/16 18:00	-	63.1	-	63.2	63.1	-	-
19/02/16 19:00	-	66.0	-	66.1	-	66.0	-
19/02/16 20:00	-	75.0	-	75.0	-	75.0	-
19/02/16 21:00	-	72.3	-	72.3	-	72.3	-
19/02/16 22:00	-	67.6	-	67.6	-	67.6	-
19/02/16 23:00	-	78.2	-	78.2	-	-	78.2
	-	69.3	-	69.7	64.3	71.6	71.5

Location: NDB-Hamm NMT # 4



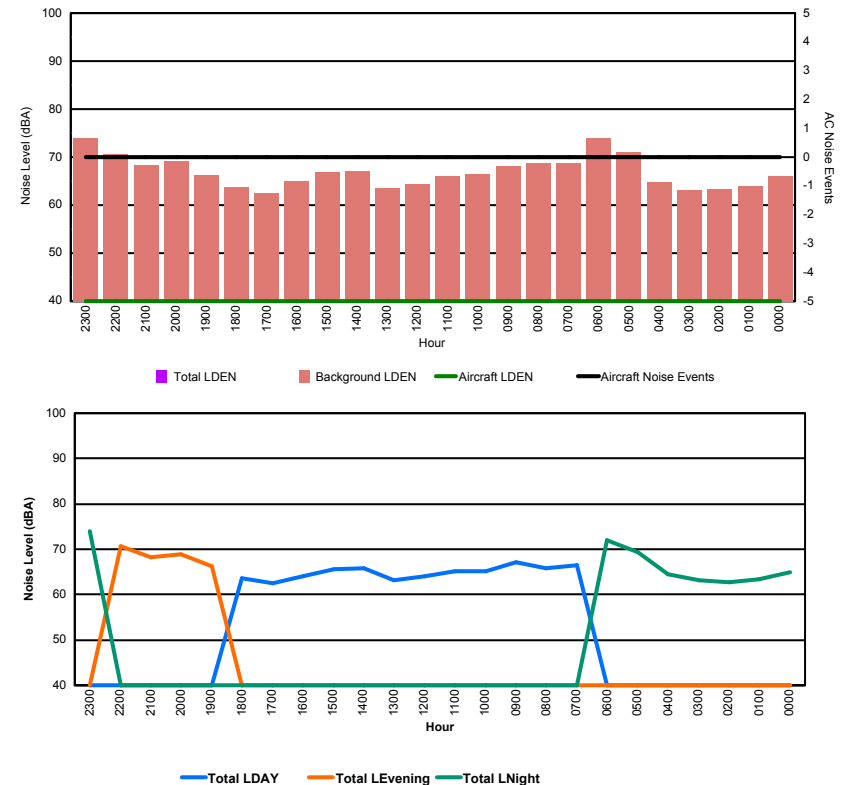


Luxembourg Airport Noise Distribution by Hour

Between 19/02/2016 00:00:00 and 19/02/2016 23:59:59 (Local Time)

Day	Aircraft Events	Total LDEN dB (A)	Aircraft LDEN dB(A)	Background LDEN dB(A)	Total LDay dB(A)	Total LEvening dB(A)	Total LNight dB (A)
19/02/16 0:00	-	64.9	-	66.0	-	-	64.9
19/02/16 1:00	-	63.3	-	64.0	-	-	63.3
19/02/16 2:00	-	62.8	-	63.3	-	-	62.8
19/02/16 3:00	-	63.1	-	63.2	-	-	63.1
19/02/16 4:00	-	64.6	-	64.8	-	-	64.6
19/02/16 5:00	-	69.4	-	71.1	-	-	69.4
19/02/16 6:00	-	71.9	-	74.0	-	-	71.9
19/02/16 7:00	-	66.4	-	68.8	66.4	-	-
19/02/16 8:00	-	65.9	-	68.7	65.9	-	-
19/02/16 9:00	-	67.1	-	68.1	67.1	-	-
19/02/16 10:00	-	65.2	-	66.5	65.2	-	-
19/02/16 11:00	-	65.2	-	66.0	65.2	-	-
19/02/16 12:00	-	64.1	-	64.4	64.1	-	-
19/02/16 13:00	-	63.1	-	63.6	63.1	-	-
19/02/16 14:00	-	65.9	-	67.1	65.9	-	-
19/02/16 15:00	-	65.7	-	66.8	65.7	-	-
19/02/16 16:00	-	64.1	-	64.9	64.1	-	-
19/02/16 17:00	-	62.4	-	62.6	62.4	-	-
19/02/16 18:00	-	63.6	-	63.8	63.6	-	-
19/02/16 19:00	-	66.3	-	66.3	-	66.3	-
19/02/16 20:00	-	68.9	-	69.1	-	68.9	-
19/02/16 21:00	-	68.3	-	68.4	-	68.3	-
19/02/16 22:00	-	70.6	-	70.7	-	70.6	-
19/02/16 23:00	-	74.0	-	74.0	-	-	74.0
	-	67.4	-	68.2	65.1	68.8	68.8

Location: Gare centrale NMT # 5



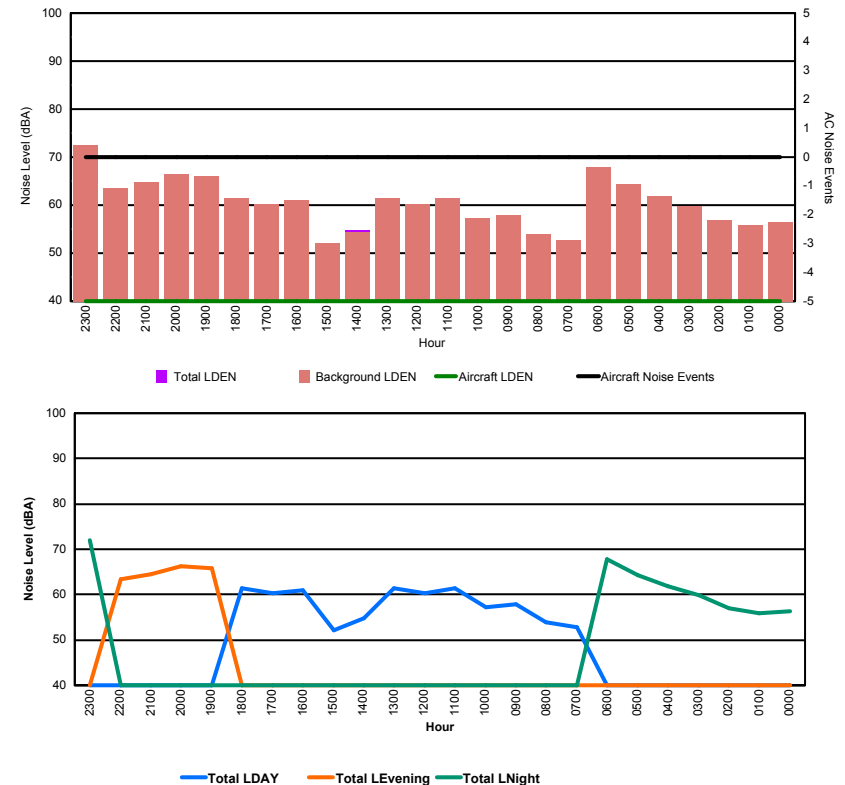


Luxembourg Airport Noise Distribution by Hour

Between 20/02/2016 00:00:00 and 20/02/2016 23:59:59 (Local Time)

Day	Aircraft Events	Total LDEN dB (A)	Aircraft LDEN dB(A)	Background LDEN dB(A)	Total LDay dB(A)	Total LEvening dB(A)	Total LNight dB (A)
20/02/16 0:00	-	56.3	-	56.4	-	-	56.3
20/02/16 1:00	-	55.9	-	55.9	-	-	55.9
20/02/16 2:00	-	56.9	-	56.9	-	-	56.9
20/02/16 3:00	-	59.8	-	59.8	-	-	59.8
20/02/16 4:00	-	61.9	-	61.9	-	-	61.9
20/02/16 5:00	-	64.2	-	64.4	-	-	64.2
20/02/16 6:00	-	67.8	-	67.9	-	-	67.8
20/02/16 7:00	-	52.8	-	52.8	52.8	-	-
20/02/16 8:00	-	53.9	-	54.0	53.9	-	-
20/02/16 9:00	-	57.9	-	58.0	57.9	-	-
20/02/16 10:00	-	57.2	-	57.3	57.2	-	-
20/02/16 11:00	-	61.4	-	61.5	61.4	-	-
20/02/16 12:00	-	60.2	-	60.3	60.2	-	-
20/02/16 13:00	-	61.3	-	61.5	61.3	-	-
20/02/16 14:00	-	54.8	-	54.3	54.8	-	-
20/02/16 15:00	-	52.1	-	52.1	52.1	-	-
20/02/16 16:00	-	61.0	-	61.0	61.0	-	-
20/02/16 17:00	-	60.2	-	60.3	60.2	-	-
20/02/16 18:00	-	61.3	-	61.4	61.3	-	-
20/02/16 19:00	-	65.9	-	66.1	-	65.9	-
20/02/16 20:00	-	66.3	-	66.5	-	66.3	-
20/02/16 21:00	-	64.5	-	64.7	-	64.5	-
20/02/16 22:00	-	63.4	-	63.6	-	63.4	-
20/02/16 23:00	-	72.1	-	72.4	-	-	72.1
	-	63.3	-	63.5	59.0	65.2	65.5

Location: Roodt/Syr NMT # 1



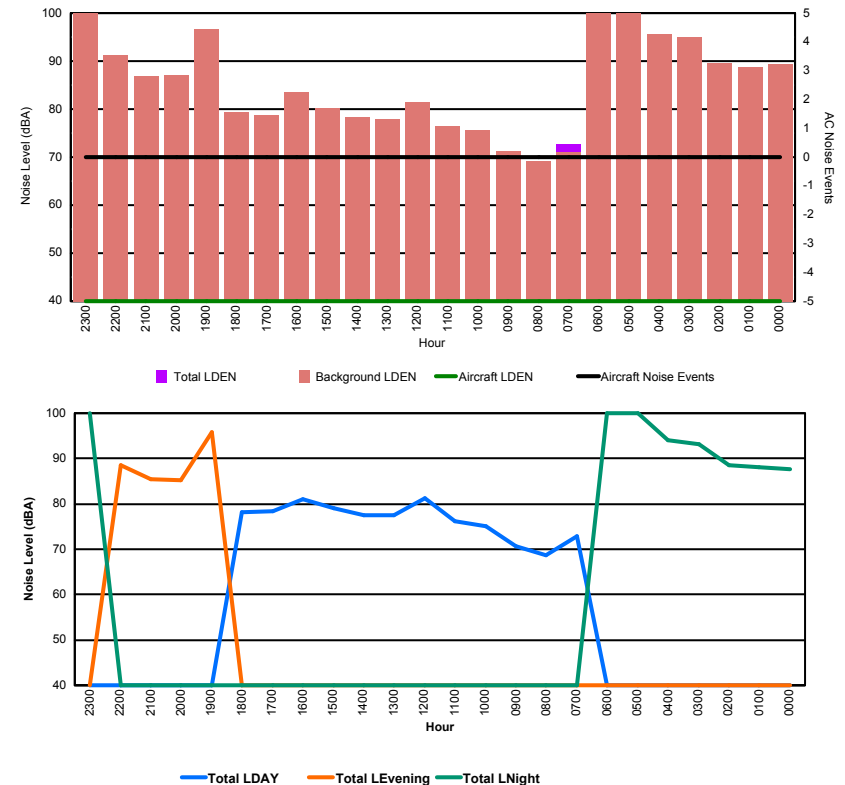


Luxembourg Airport Noise Distribution by Hour

Between 20/02/2016 00:00:00 and 20/02/2016 23:59:59 (Local Time)

Day	Aircraft Events	Total LDEN dB (A)	Aircraft LDEN dB(A)	Background LDEN dB(A)	Total LDay dB(A)	Total LEvening dB(A)	Total LNight dB (A)
20/02/16 0:00	-	87.7	-	89.3	-	-	87.7
20/02/16 1:00	-	88.2	-	88.8	-	-	88.2
20/02/16 2:00	-	88.5	-	89.5	-	-	88.5
20/02/16 3:00	-	93.2	-	95.0	-	-	93.2
20/02/16 4:00	-	94.1	-	95.7	-	-	94.1
20/02/16 5:00	-	102.5	-	105.2	-	-	102.5
20/02/16 6:00	-	102.4	-	105.1	-	-	102.4
20/02/16 7:00	-	72.8	-	71.1	72.8	-	-
20/02/16 8:00	-	68.6	-	69.1	68.6	-	-
20/02/16 9:00	-	70.7	-	71.2	70.7	-	-
20/02/16 10:00	-	75.0	-	75.7	75.0	-	-
20/02/16 11:00	-	76.2	-	76.4	76.2	-	-
20/02/16 12:00	-	81.2	-	81.4	81.2	-	-
20/02/16 13:00	-	77.5	-	77.9	77.5	-	-
20/02/16 14:00	-	77.6	-	78.3	77.6	-	-
20/02/16 15:00	-	79.1	-	80.3	79.1	-	-
20/02/16 16:00	-	81.0	-	83.5	81.0	-	-
20/02/16 17:00	-	78.4	-	78.7	78.4	-	-
20/02/16 18:00	-	78.1	-	79.3	78.1	-	-
20/02/16 19:00	-	95.8	-	96.6	-	95.8	-
20/02/16 20:00	-	85.2	-	87.1	-	85.2	-
20/02/16 21:00	-	85.4	-	86.9	-	85.4	-
20/02/16 22:00	-	88.6	-	91.2	-	88.6	-
20/02/16 23:00	-	104.5	-	108.5	-	-	104.5
	-	95.0	-	98.1	77.6	91.1	99.4

Location: DVOR NMT # 2



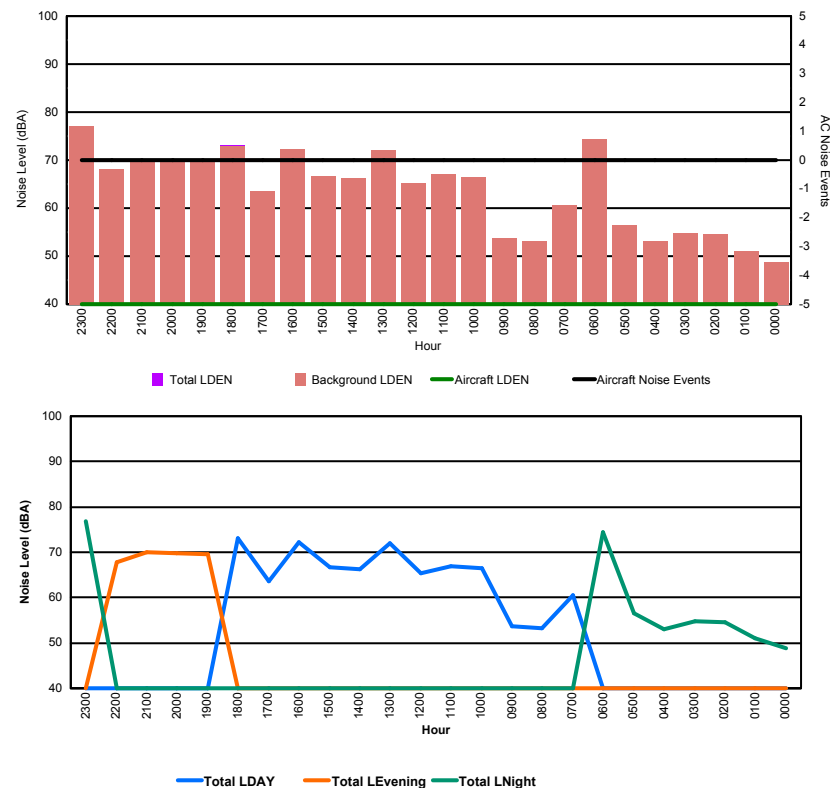


Luxembourg Airport Noise Distribution by Hour

Between 20/02/2016 00:00:00 and 20/02/2016 23:59:59 (Local Time)

Day	Aircraft Events	Total LDEN dB (A)	Aircraft LDEN dB(A)	Background LDEN dB(A)	Total LDay dB(A)	Total LEvening dB(A)	Total LNight dB (A)
20/02/16 0:00	-	48.8	-	48.8	-	-	48.8
20/02/16 1:00	-	51.0	-	51.1	-	-	51.0
20/02/16 2:00	-	54.5	-	54.6	-	-	54.5
20/02/16 3:00	-	54.8	-	54.8	-	-	54.8
20/02/16 4:00	-	53.1	-	53.1	-	-	53.1
20/02/16 5:00	-	56.5	-	56.5	-	-	56.5
20/02/16 6:00	-	74.4	-	74.4	-	-	74.4
20/02/16 7:00	-	60.6	-	60.6	60.6	-	-
20/02/16 8:00	-	53.2	-	53.2	53.2	-	-
20/02/16 9:00	-	53.7	-	53.8	53.7	-	-
20/02/16 10:00	-	66.5	-	66.5	66.5	-	-
20/02/16 11:00	-	67.0	-	67.0	67.0	-	-
20/02/16 12:00	-	65.3	-	65.3	65.3	-	-
20/02/16 13:00	-	72.1	-	72.1	72.1	-	-
20/02/16 14:00	-	66.2	-	66.3	66.2	-	-
20/02/16 15:00	-	66.6	-	66.6	66.6	-	-
20/02/16 16:00	-	72.3	-	72.2	72.3	-	-
20/02/16 17:00	-	63.6	-	63.6	63.6	-	-
20/02/16 18:00	-	73.1	-	73.0	73.1	-	-
20/02/16 19:00	-	69.5	-	69.5	-	69.5	-
20/02/16 20:00	-	69.7	-	69.7	-	69.7	-
20/02/16 21:00	-	69.9	-	69.9	-	69.9	-
20/02/16 22:00	-	67.8	-	68.1	-	67.8	-
20/02/16 23:00	-	76.9	-	77.0	-	-	76.9
	-	69.0	-	69.0	68.2	69.3	69.9

Location: Mid Runway NMT # 3



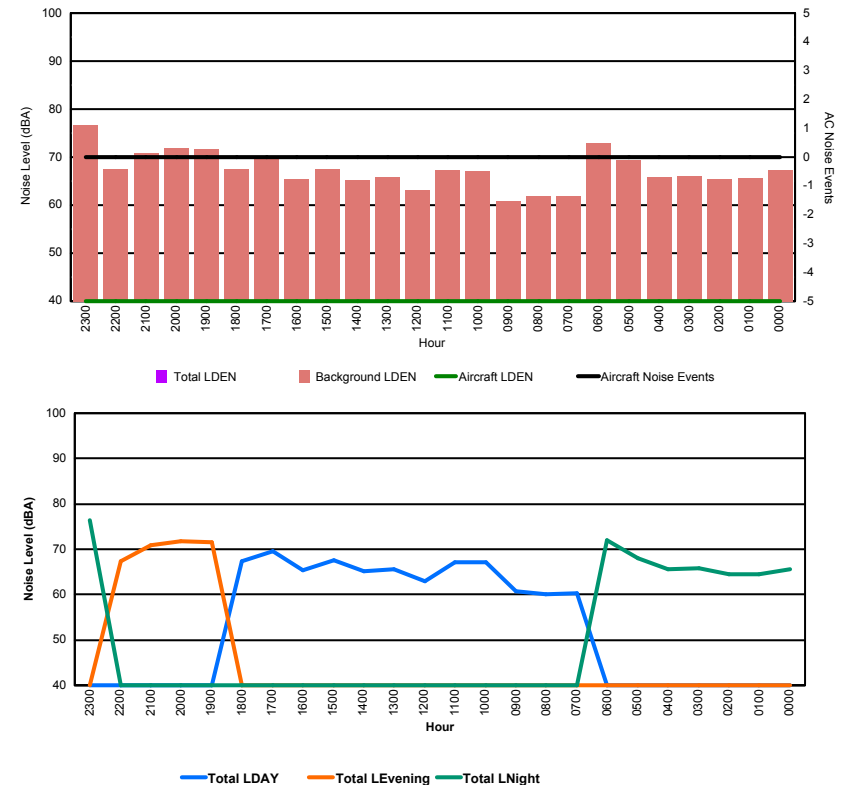


Luxembourg Airport Noise Distribution by Hour

Between 20/02/2016 00:00:00 and 20/02/2016 23:59:59 (Local Time)

Day	Aircraft Events	Total LDEN dB (A)	Aircraft LDEN dB(A)	Background LDEN dB(A)	Total LDay dB(A)	Total LEvening dB(A)	Total LNight dB (A)
20/02/16 0:00	-	65.7	-	67.2	-	-	65.7
20/02/16 1:00	-	64.6	-	65.7	-	-	64.6
20/02/16 2:00	-	64.4	-	65.5	-	-	64.4
20/02/16 3:00	-	65.8	-	66.0	-	-	65.8
20/02/16 4:00	-	65.6	-	65.8	-	-	65.6
20/02/16 5:00	-	68.1	-	69.3	-	-	68.1
20/02/16 6:00	-	72.1	-	72.9	-	-	72.1
20/02/16 7:00	-	60.4	-	61.8	60.4	-	-
20/02/16 8:00	-	60.1	-	61.9	60.1	-	-
20/02/16 9:00	-	60.7	-	60.8	60.7	-	-
20/02/16 10:00	-	67.1	-	67.1	67.1	-	-
20/02/16 11:00	-	67.1	-	67.2	67.1	-	-
20/02/16 12:00	-	62.9	-	63.1	62.9	-	-
20/02/16 13:00	-	65.7	-	65.8	65.7	-	-
20/02/16 14:00	-	65.2	-	65.3	65.2	-	-
20/02/16 15:00	-	67.5	-	67.5	67.5	-	-
20/02/16 16:00	-	65.4	-	65.4	65.4	-	-
20/02/16 17:00	-	69.5	-	69.5	69.5	-	-
20/02/16 18:00	-	67.3	-	67.4	67.3	-	-
20/02/16 19:00	-	71.6	-	71.7	-	71.6	-
20/02/16 20:00	-	71.8	-	71.9	-	71.8	-
20/02/16 21:00	-	70.9	-	70.9	-	70.9	-
20/02/16 22:00	-	67.4	-	67.5	-	67.4	-
20/02/16 23:00	-	76.5	-	76.6	-	-	76.5
	-	68.7	-	69.0	65.8	70.7	70.2

Location: NDB-Hamm NMT # 4



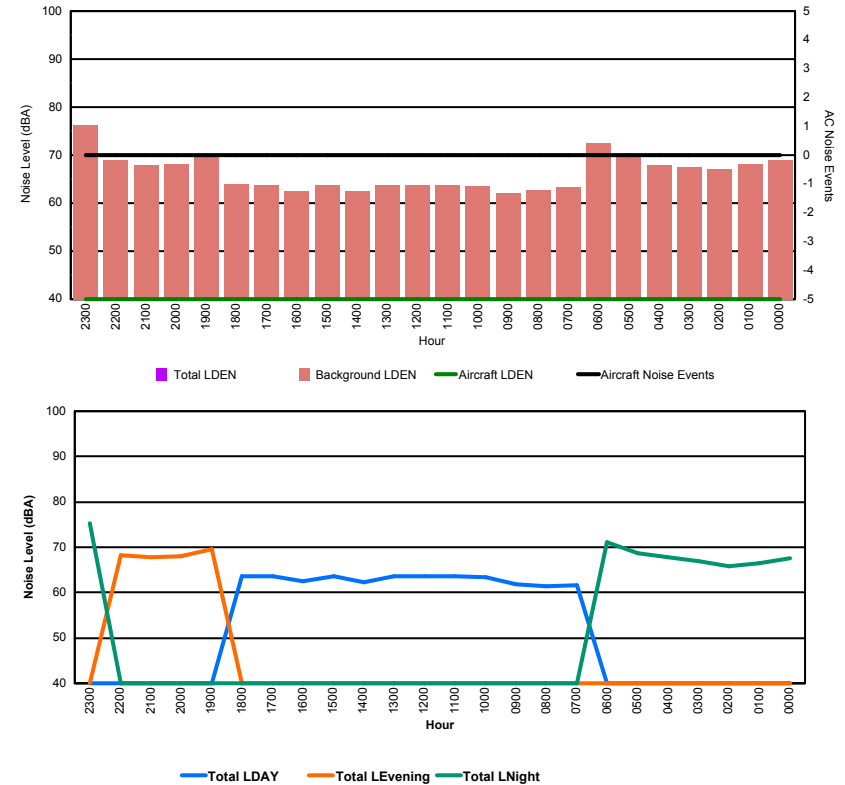


Luxembourg Airport Noise Distribution by Hour

Between 20/02/2016 00:00:00 and 20/02/2016 23:59:59 (Local Time)

Day	Aircraft Events	Total LDEN dB (A)	Aircraft LDEN dB(A)	Background LDEN dB(A)	Total LDay dB(A)	Total LEvening dB(A)	Total LNight dB (A)
20/02/16 0:00	-	67.5	-	69.0	-	-	67.5
20/02/16 1:00	-	66.4	-	68.1	-	-	66.4
20/02/16 2:00	-	65.8	-	67.1	-	-	65.8
20/02/16 3:00	-	67.0	-	67.5	-	-	67.0
20/02/16 4:00	-	67.7	-	68.0	-	-	67.7
20/02/16 5:00	-	68.6	-	69.8	-	-	68.6
20/02/16 6:00	-	71.2	-	72.5	-	-	71.2
20/02/16 7:00	-	61.7	-	63.3	61.7	-	-
20/02/16 8:00	-	61.3	-	62.8	61.3	-	-
20/02/16 9:00	-	61.8	-	62.1	61.8	-	-
20/02/16 10:00	-	63.3	-	63.5	63.3	-	-
20/02/16 11:00	-	63.6	-	63.8	63.6	-	-
20/02/16 12:00	-	63.5	-	63.7	63.5	-	-
20/02/16 13:00	-	63.7	-	63.8	63.7	-	-
20/02/16 14:00	-	62.2	-	62.4	62.2	-	-
20/02/16 15:00	-	63.5	-	63.7	63.5	-	-
20/02/16 16:00	-	62.4	-	62.5	62.4	-	-
20/02/16 17:00	-	63.5	-	63.8	63.5	-	-
20/02/16 18:00	-	63.6	-	64.0	63.6	-	-
20/02/16 19:00	-	69.5	-	69.8	-	69.5	-
20/02/16 20:00	-	68.0	-	68.2	-	68.0	-
20/02/16 21:00	-	67.7	-	67.9	-	67.7	-
20/02/16 22:00	-	68.3	-	69.0	-	68.3	-
20/02/16 23:00	-	75.4	-	76.2	-	-	75.4
	-	67.4	-	68.1	62.9	68.4	70.0

Location: Gare centrale NMT # 5



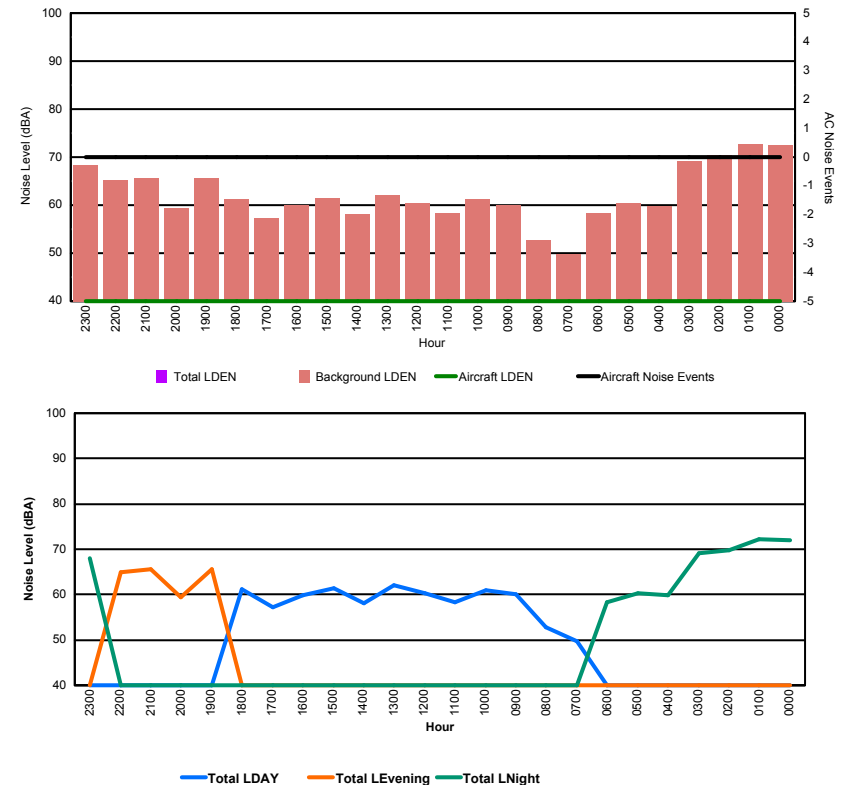


Luxembourg Airport Noise Distribution by Hour

Between 21/02/2016 00:00:00 and 21/02/2016 23:59:59 (Local Time)

Day	Aircraft Events	Total LDEN dB (A)	Aircraft LDEN dB(A)	Background LDEN dB(A)	Total LDay dB(A)	Total LEvening dB(A)	Total LNight dB (A)
21/02/16 0:00	-	72.0	-	72.5	-	-	72.0
21/02/16 1:00	-	72.2	-	72.7	-	-	72.2
21/02/16 2:00	-	69.8	-	70.4	-	-	69.8
21/02/16 3:00	-	69.2	-	69.2	-	-	69.2
21/02/16 4:00	-	59.8	-	59.8	-	-	59.8
21/02/16 5:00	-	60.4	-	60.4	-	-	60.4
21/02/16 6:00	-	58.4	-	58.4	-	-	58.4
21/02/16 7:00	-	49.7	-	49.7	49.7	-	-
21/02/16 8:00	-	52.7	-	52.7	52.7	-	-
21/02/16 9:00	-	60.0	-	60.1	60.0	-	-
21/02/16 10:00	-	61.0	-	61.2	61.0	-	-
21/02/16 11:00	-	58.3	-	58.4	58.3	-	-
21/02/16 12:00	-	60.3	-	60.4	60.3	-	-
21/02/16 13:00	-	62.0	-	62.1	62.0	-	-
21/02/16 14:00	-	58.1	-	58.1	58.1	-	-
21/02/16 15:00	-	61.4	-	61.5	61.4	-	-
21/02/16 16:00	-	59.9	-	60.0	59.9	-	-
21/02/16 17:00	-	57.2	-	57.3	57.2	-	-
21/02/16 18:00	-	61.2	-	61.3	61.2	-	-
21/02/16 19:00	-	65.6	-	65.7	-	65.6	-
21/02/16 20:00	-	59.4	-	59.4	-	59.4	-
21/02/16 21:00	-	65.6	-	65.6	-	65.6	-
21/02/16 22:00	-	65.0	-	65.2	-	65.0	-
21/02/16 23:00	-	68.1	-	68.3	-	-	68.1
	-	65.3	-	65.6	59.5	64.5	68.7

Location: Roodt/Syr NMT # 1



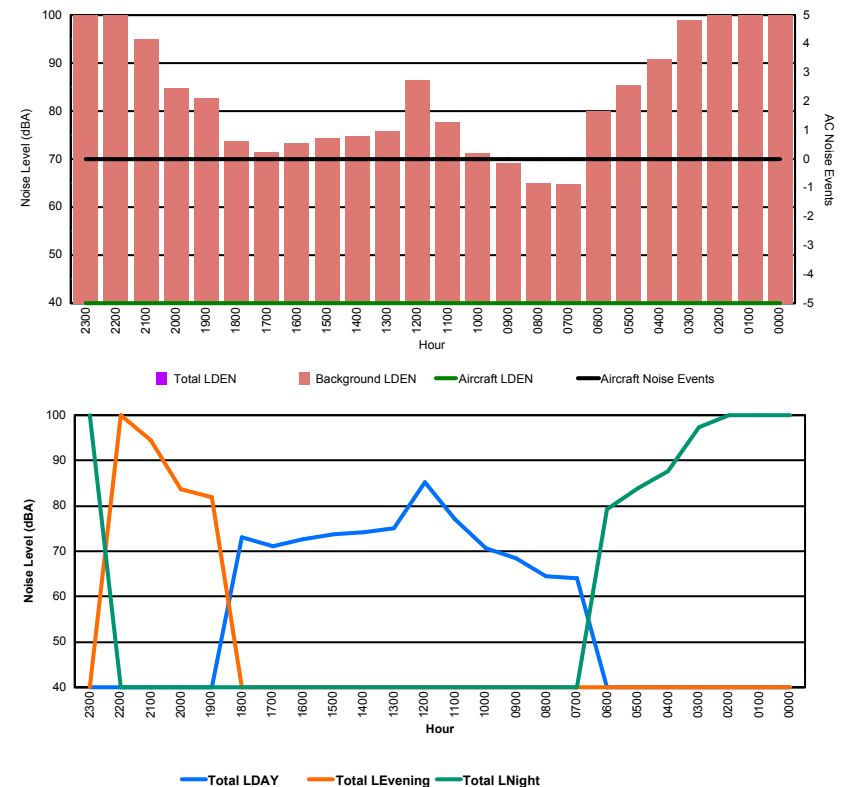


Luxembourg Airport Noise Distribution by Hour

Between 21/02/2016 00:00:00 and 21/02/2016 23:59:59 (Local Time)

Day	Aircraft Events	Total LDEN dB (A)	Aircraft LDEN dB(A)	Background LDEN dB(A)	Total LDay dB(A)	Total LEvening dB(A)	Total LNight dB (A)
21/02/16 0:00	-	103.0	-	105.9	-	-	103.0
21/02/16 1:00	-	108.4	-	110.9	-	-	108.4
21/02/16 2:00	-	102.1	-	106.3	-	-	102.1
21/02/16 3:00	-	97.4	-	99.0	-	-	97.4
21/02/16 4:00	-	87.6	-	90.9	-	-	87.6
21/02/16 5:00	-	83.8	-	85.5	-	-	83.8
21/02/16 6:00	-	79.3	-	80.1	-	-	79.3
21/02/16 7:00	-	64.1	-	64.7	64.1	-	-
21/02/16 8:00	-	64.5	-	65.1	64.5	-	-
21/02/16 9:00	-	68.4	-	69.1	68.4	-	-
21/02/16 10:00	-	70.6	-	71.3	70.6	-	-
21/02/16 11:00	-	77.0	-	77.8	77.0	-	-
21/02/16 12:00	-	85.3	-	86.4	85.3	-	-
21/02/16 13:00	-	75.1	-	75.9	75.1	-	-
21/02/16 14:00	-	74.2	-	74.7	74.2	-	-
21/02/16 15:00	-	73.8	-	74.3	73.8	-	-
21/02/16 16:00	-	72.6	-	73.3	72.6	-	-
21/02/16 17:00	-	71.1	-	71.5	71.1	-	-
21/02/16 18:00	-	73.1	-	73.7	73.1	-	-
21/02/16 19:00	-	81.9	-	82.7	-	81.9	-
21/02/16 20:00	-	83.7	-	84.7	-	83.7	-
21/02/16 21:00	-	94.4	-	95.0	-	94.4	-
21/02/16 22:00	-	103.3	-	106.3	-	103.3	-
21/02/16 23:00	-	107.2	-	109.8	-	-	107.2
	-	99.0	-	101.7	76.6	97.9	103.1

Location: DVOR NMT # 2



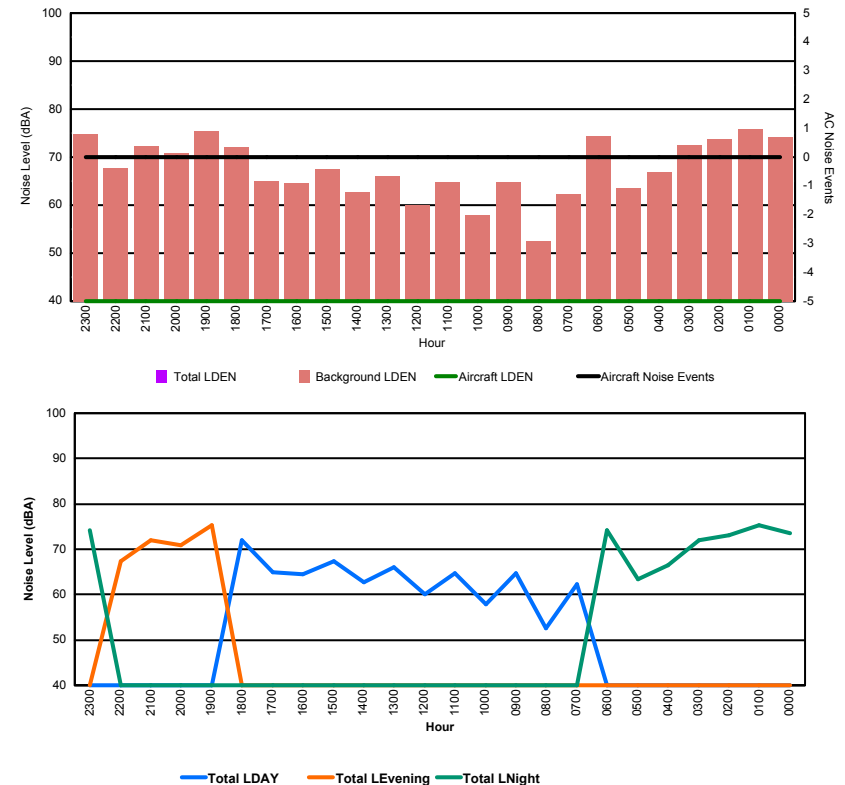


Luxembourg Airport Noise Distribution by Hour

Between 21/02/2016 00:00:00 and 21/02/2016 23:59:59 (Local Time)

Day	Aircraft Events	Total LDEN dB (A)	Aircraft LDEN dB(A)	Background LDEN dB(A)	Total LDay dB(A)	Total LEvening dB(A)	Total LNight dB (A)
21/02/16 0:00	-	73.5	-	74.2	-	-	73.5
21/02/16 1:00	-	75.3	-	75.9	-	-	75.3
21/02/16 2:00	-	73.1	-	73.8	-	-	73.1
21/02/16 3:00	-	71.9	-	72.5	-	-	71.9
21/02/16 4:00	-	66.5	-	66.8	-	-	66.5
21/02/16 5:00	-	63.4	-	63.6	-	-	63.4
21/02/16 6:00	-	74.2	-	74.3	-	-	74.2
21/02/16 7:00	-	62.2	-	62.2	62.2	-	-
21/02/16 8:00	-	52.5	-	52.6	52.5	-	-
21/02/16 9:00	-	64.8	-	64.8	64.8	-	-
21/02/16 10:00	-	57.9	-	58.0	57.9	-	-
21/02/16 11:00	-	64.7	-	64.7	64.7	-	-
21/02/16 12:00	-	60.0	-	60.0	60.0	-	-
21/02/16 13:00	-	66.0	-	66.0	66.0	-	-
21/02/16 14:00	-	62.7	-	62.7	62.7	-	-
21/02/16 15:00	-	67.4	-	67.5	67.4	-	-
21/02/16 16:00	-	64.5	-	64.5	64.5	-	-
21/02/16 17:00	-	65.0	-	65.0	65.0	-	-
21/02/16 18:00	-	71.9	-	72.0	71.9	-	-
21/02/16 19:00	-	75.4	-	75.4	-	75.4	-
21/02/16 20:00	-	70.9	-	70.9	-	70.9	-
21/02/16 21:00	-	72.1	-	72.2	-	72.1	-
21/02/16 22:00	-	67.4	-	67.7	-	67.4	-
21/02/16 23:00	-	74.2	-	74.7	-	-	74.2
	-	70.4	-	70.7	65.5	72.3	72.8

Location: Mid Runway NMT # 3



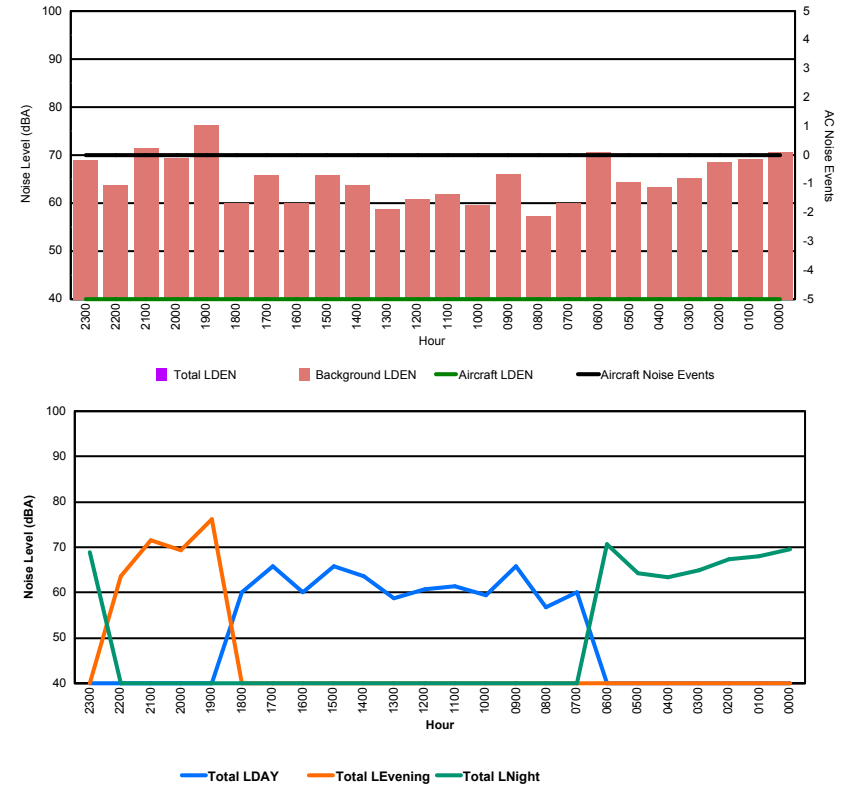


Luxembourg Airport Noise Distribution by Hour

Between 21/02/2016 00:00:00 and 21/02/2016 23:59:59 (Local Time)

Day	Aircraft Events	Total LDEN dB (A)	Aircraft LDEN dB(A)	Background LDEN dB(A)	Total LDay dB(A)	Total LEvening dB(A)	Total LNight dB (A)
21/02/16 0:00	-	69.5	-	70.7	-	-	69.5
21/02/16 1:00	-	68.0	-	69.1	-	-	68.0
21/02/16 2:00	-	67.4	-	68.5	-	-	67.4
21/02/16 3:00	-	65.0	-	65.2	-	-	65.0
21/02/16 4:00	-	63.3	-	63.3	-	-	63.3
21/02/16 5:00	-	64.2	-	64.3	-	-	64.2
21/02/16 6:00	-	70.7	-	70.7	-	-	70.7
21/02/16 7:00	-	60.0	-	60.1	60.0	-	-
21/02/16 8:00	-	56.8	-	57.3	56.8	-	-
21/02/16 9:00	-	65.9	-	66.0	65.9	-	-
21/02/16 10:00	-	59.5	-	59.5	59.5	-	-
21/02/16 11:00	-	61.5	-	61.8	61.5	-	-
21/02/16 12:00	-	60.8	-	60.9	60.8	-	-
21/02/16 13:00	-	58.7	-	58.7	58.7	-	-
21/02/16 14:00	-	63.7	-	63.8	63.7	-	-
21/02/16 15:00	-	65.8	-	65.8	65.8	-	-
21/02/16 16:00	-	60.0	-	60.0	60.0	-	-
21/02/16 17:00	-	65.8	-	65.9	65.8	-	-
21/02/16 18:00	-	60.0	-	60.1	60.0	-	-
21/02/16 19:00	-	76.1	-	76.2	-	76.1	-
21/02/16 20:00	-	69.3	-	69.3	-	69.3	-
21/02/16 21:00	-	71.5	-	71.5	-	71.5	-
21/02/16 22:00	-	63.6	-	63.7	-	63.6	-
21/02/16 23:00	-	68.9	-	69.0	-	-	68.9
	-	67.5	-	67.8	62.5	72.2	67.8

Location: NDB-Hamm NMT # 4





Luxembourg Airport Noise Distribution by Hour

Between 21/02/2016 00:00:00 and 21/02/2016 23:59:59 (Local Time)

Day	Aircraft Events	Total LDEN dB (A)	Aircraft LDEN dB(A)	Background LDEN dB(A)	Total LDay dB(A)	Total LEvening dB(A)	Total LNight dB (A)
21/02/16 0:00	-	72.5	-	74.5	-	-	72.5
21/02/16 1:00	-	72.1	-	74.8	-	-	72.1
21/02/16 2:00	-	69.3	-	71.5	-	-	69.3
21/02/16 3:00	-	68.9	-	69.6	-	-	68.9
21/02/16 4:00	-	66.1	-	66.5	-	-	66.1
21/02/16 5:00	-	66.9	-	67.6	-	-	66.9
21/02/16 6:00	-	69.2	-	69.9	-	-	69.2
21/02/16 7:00	-	66.5	-	67.2	66.5	-	-
21/02/16 8:00	-	58.0	-	59.1	58.0	-	-
21/02/16 9:00	-	61.3	-	61.3	61.3	-	-
21/02/16 10:00	-	60.5	-	60.6	60.5	-	-
21/02/16 11:00	-	60.8	-	61.0	60.8	-	-
21/02/16 12:00	-	60.5	-	60.5	60.5	-	-
21/02/16 13:00	-	60.1	-	60.2	60.1	-	-
21/02/16 14:00	-	60.5	-	60.5	60.5	-	-
21/02/16 15:00	-	61.9	-	62.1	61.9	-	-
21/02/16 16:00	-	61.4	-	61.4	61.4	-	-
21/02/16 17:00	-	62.1	-	62.3	62.1	-	-
21/02/16 18:00	-	60.3	-	60.3	60.3	-	-
21/02/16 19:00	-	69.1	-	69.3	-	69.1	-
21/02/16 20:00	-	65.5	-	65.5	-	65.5	-
21/02/16 21:00	-	66.0	-	66.1	-	66.0	-
21/02/16 22:00	-	67.7	-	68.1	-	67.7	-
21/02/16 23:00	-	69.9	-	70.1	-	-	69.9
	-	66.9	-	68.1	61.7	67.3	69.9

Location: Gare centrale NMT # 5

