

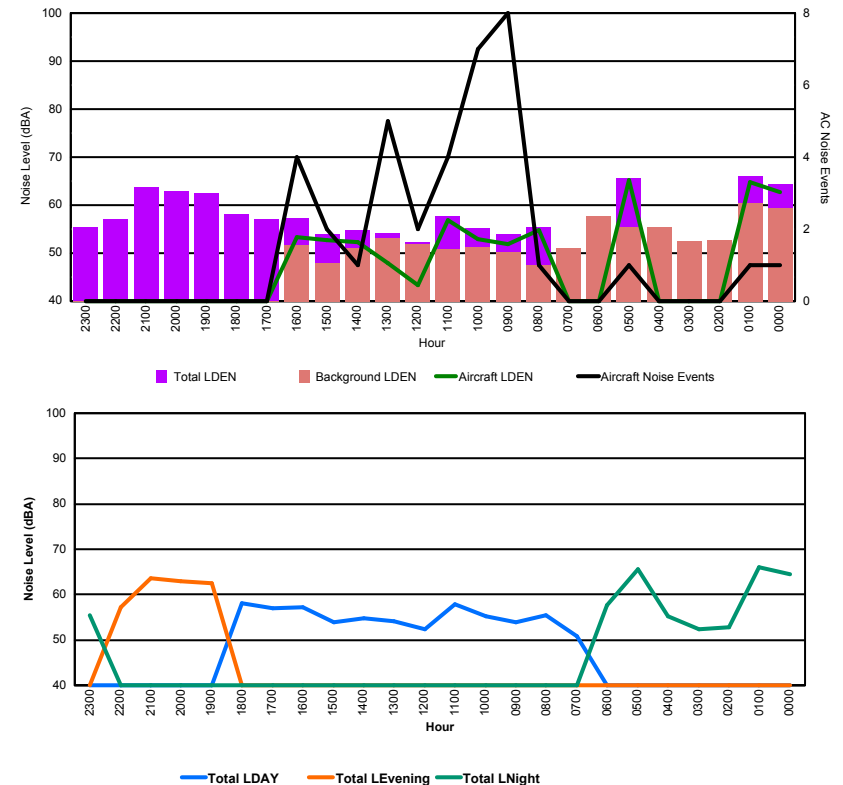


## Luxembourg Airport Noise Distribution by Hour

Between 18/02/2016 00:00:00 and 18/02/2016 23:59:59 (Local Time)

Day	Aircraft Events	Total LDEN dB (A)	Aircraft LDEN dB(A)	Background LDEN dB(A)	Total LDay dB(A)	Total LEvening dB(A)	Total LNight dB (A)
18/02/16 0:00	1	64.4	62.8	59.4	-	-	64.4
18/02/16 1:00	1	66.1	64.7	60.4	-	-	66.1
18/02/16 2:00	-	52.8	-	52.8	-	-	52.8
18/02/16 3:00	-	52.4	-	52.4	-	-	52.4
18/02/16 4:00	-	55.3	-	55.4	-	-	55.3
18/02/16 5:00	1	65.7	65.3	55.4	-	-	65.7
18/02/16 6:00	-	57.6	-	57.7	-	-	57.6
18/02/16 7:00	-	50.9	-	51.0	50.9	-	-
18/02/16 8:00	1	55.5	54.7	47.5	55.5	-	-
18/02/16 9:00	8	54.0	51.8	50.3	54.0	-	-
18/02/16 10:00	7	55.2	53.0	51.3	55.2	-	-
18/02/16 11:00	4	57.8	56.9	50.8	57.8	-	-
18/02/16 12:00	2	52.3	43.4	51.8	52.3	-	-
18/02/16 13:00	5	54.1	47.9	53.1	54.1	-	-
18/02/16 14:00	1	54.7	52.2	51.1	54.7	-	-
18/02/16 15:00	2	53.9	52.7	48.0	53.9	-	-
18/02/16 16:00	4	57.3	53.4	51.6	57.3	-	-
18/02/16 17:00	-	57.0	-	-	57.0	-	-
18/02/16 18:00	-	58.1	-	-	58.1	-	-
18/02/16 19:00	-	62.5	-	-	-	62.5	-
18/02/16 20:00	-	63.0	-	-	-	63.0	-
18/02/16 21:00	-	63.7	-	-	-	63.7	-
18/02/16 22:00	-	57.1	-	-	-	57.1	-
18/02/16 23:00	-	55.4	-	-	-	-	55.4
	<b>37</b>	<b>59.8</b>	<b>59.2</b>	<b>54.6</b>	<b>55.6</b>	<b>62.2</b>	<b>61.8</b>

Location: Roodt/Syr NMT # 1



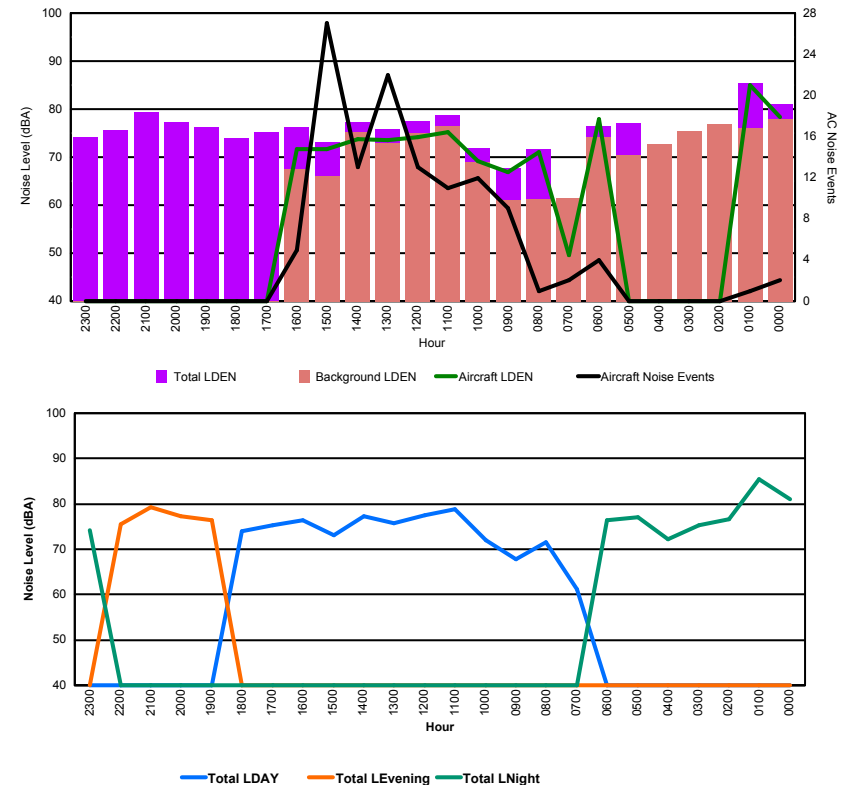


## Luxembourg Airport Noise Distribution by Hour

Between 18/02/2016 00:00:00 and 18/02/2016 23:59:59 (Local Time)

Day	Aircraft Events	Total LDEN dB (A)	Aircraft LDEN dB(A)	Background LDEN dB(A)	Total LDay dB(A)	Total LEvening dB(A)	Total LNight dB (A)
18/02/16 0:00	2	81.0	78.4	77.9	-	-	81.0
18/02/16 1:00	1	85.5	85.0	76.1	-	-	85.5
18/02/16 2:00	-	76.6	-	76.9	-	-	76.6
18/02/16 3:00	-	75.3	-	75.5	-	-	75.3
18/02/16 4:00	-	72.3	-	72.7	-	-	72.3
18/02/16 5:00	-	77.0	-	70.4	-	-	77.0
18/02/16 6:00	4	76.5	78.0	74.1	-	-	76.5
18/02/16 7:00	2	61.1	49.6	61.4	61.1	-	-
18/02/16 8:00	1	71.6	71.1	61.2	71.6	-	-
18/02/16 9:00	9	67.8	66.9	61.0	67.8	-	-
18/02/16 10:00	12	71.9	69.2	69.0	71.9	-	-
18/02/16 11:00	11	78.8	75.3	76.5	78.8	-	-
18/02/16 12:00	13	77.4	74.2	75.1	77.4	-	-
18/02/16 13:00	22	75.8	73.5	72.9	75.8	-	-
18/02/16 14:00	13	77.2	73.7	75.2	77.2	-	-
18/02/16 15:00	27	73.1	71.7	66.0	73.1	-	-
18/02/16 16:00	5	76.3	71.7	67.5	76.3	-	-
18/02/16 17:00	-	75.3	-	-	75.3	-	-
18/02/16 18:00	-	74.0	-	-	74.0	-	-
18/02/16 19:00	-	76.3	-	-	-	76.3	-
18/02/16 20:00	-	77.3	-	-	-	77.3	-
18/02/16 21:00	-	79.3	-	-	-	79.3	-
18/02/16 22:00	-	75.6	-	-	-	75.6	-
18/02/16 23:00	-	74.2	-	-	-	-	74.2
	<b>122</b>	<b>77.3</b>	<b>76.7</b>	<b>73.6</b>	<b>75.0</b>	<b>77.4</b>	<b>79.4</b>

Location: DVOR NMT # 2



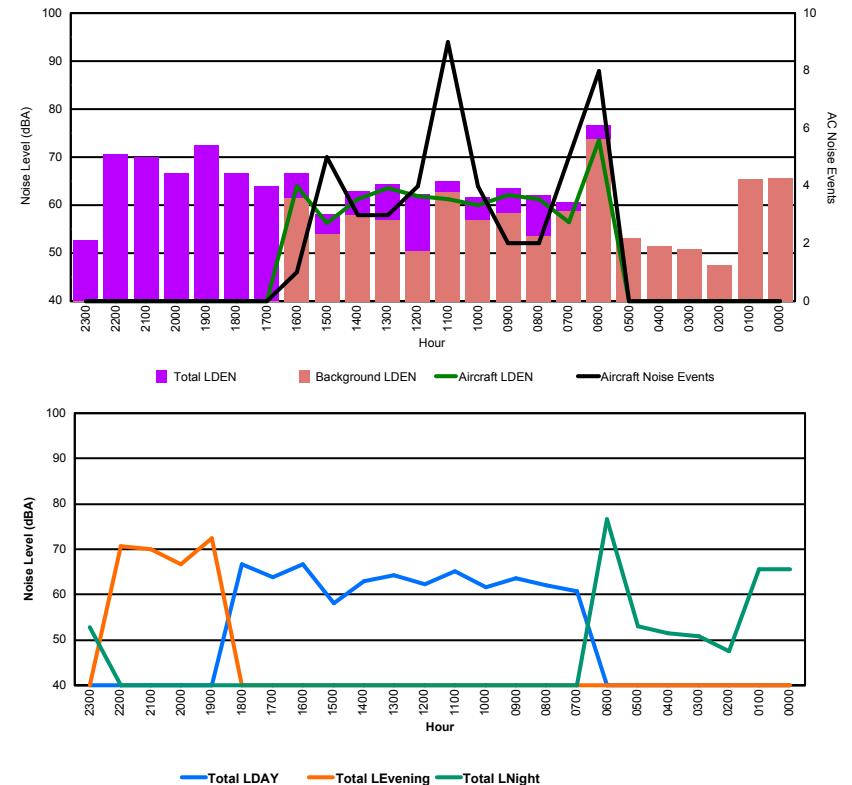


## Luxembourg Airport Noise Distribution by Hour

Between 18/02/2016 00:00:00 and 18/02/2016 23:59:59 (Local Time)

Day	Aircraft Events	Total LDEN dB (A)	Aircraft LDEN dB(A)	Background LDEN dB(A)	Total LDay dB(A)	Total LEvening dB(A)	Total LNight dB (A)
18/02/16 0:00	-	65.6	-	65.6	-	-	65.6
18/02/16 1:00	-	65.5	-	65.5	-	-	65.5
18/02/16 2:00	-	47.5	-	47.5	-	-	47.5
18/02/16 3:00	-	50.8	-	50.9	-	-	50.8
18/02/16 4:00	-	51.5	-	51.5	-	-	51.5
18/02/16 5:00	-	53.1	-	53.1	-	-	53.1
18/02/16 6:00	8	76.6	73.6	73.7	-	-	76.6
18/02/16 7:00	5	60.7	56.5	58.7	60.7	-	-
18/02/16 8:00	2	62.0	61.3	53.6	62.0	-	-
18/02/16 9:00	2	63.5	62.0	58.4	63.5	-	-
18/02/16 10:00	4	61.6	59.9	56.8	61.6	-	-
18/02/16 11:00	9	65.1	61.2	62.8	65.1	-	-
18/02/16 12:00	4	62.2	61.9	50.4	62.2	-	-
18/02/16 13:00	3	64.3	63.5	56.8	64.3	-	-
18/02/16 14:00	3	62.9	61.3	57.9	62.9	-	-
18/02/16 15:00	5	58.1	56.2	53.9	58.1	-	-
18/02/16 16:00	1	66.6	64.0	61.4	66.6	-	-
18/02/16 17:00	-	63.9	-	-	63.9	-	-
18/02/16 18:00	-	66.6	-	-	66.6	-	-
18/02/16 19:00	-	72.5	-	-	-	72.5	-
18/02/16 20:00	-	66.7	-	-	-	66.7	-
18/02/16 21:00	-	69.9	-	-	-	69.9	-
18/02/16 22:00	-	70.6	-	-	-	70.6	-
18/02/16 23:00	-	52.8	-	-	-	-	52.8
	<b>46</b>	<b>67.2</b>	<b>65.2</b>	<b>63.5</b>	<b>63.7</b>	<b>70.4</b>	<b>68.3</b>

Location: Mid Runway NMT # 3



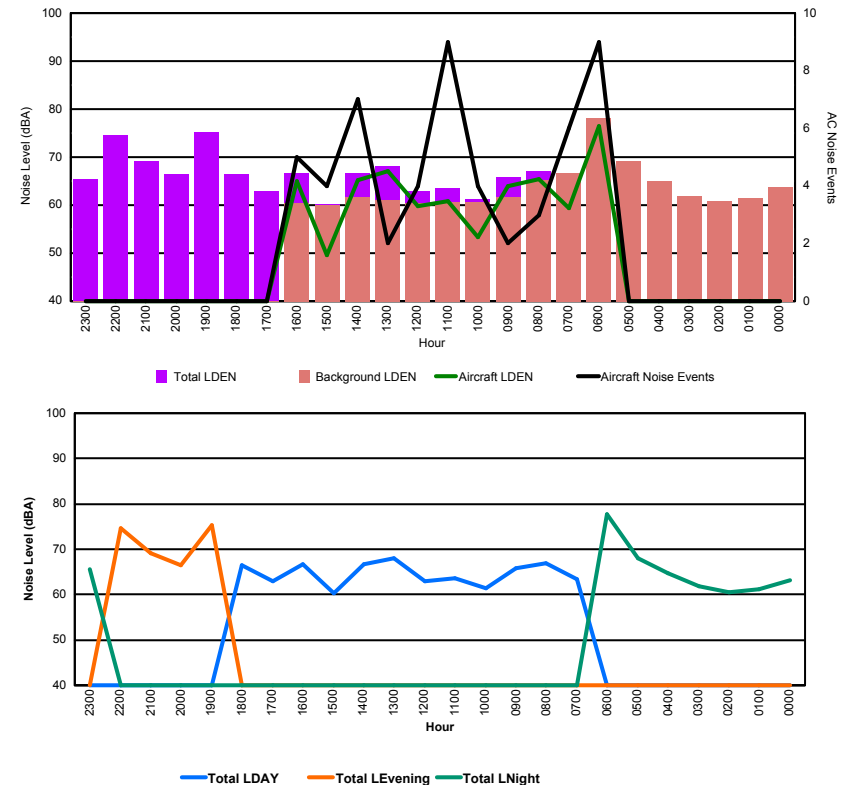


## Luxembourg Airport Noise Distribution by Hour

Between 18/02/2016 00:00:00 and 18/02/2016 23:59:59 (Local Time)

Day	Aircraft Events	Total LDEN dB (A)	Aircraft LDEN dB(A)	Background LDEN dB(A)	Total LDay dB(A)	Total LEvening dB(A)	Total LNight dB (A)
18/02/16 0:00	-	63.1	-	63.8	-	-	63.1
18/02/16 1:00	-	61.2	-	61.5	-	-	61.2
18/02/16 2:00	-	60.5	-	60.8	-	-	60.5
18/02/16 3:00	-	61.9	-	61.9	-	-	61.9
18/02/16 4:00	-	64.7	-	64.9	-	-	64.7
18/02/16 5:00	-	68.1	-	69.2	-	-	68.1
18/02/16 6:00	9	77.7	76.5	78.2	-	-	77.7
18/02/16 7:00	6	63.4	59.4	66.6	63.4	-	-
18/02/16 8:00	3	67.0	65.4	65.3	67.0	-	-
18/02/16 9:00	2	65.9	64.0	61.7	65.9	-	-
18/02/16 10:00	4	61.3	53.3	60.7	61.3	-	-
18/02/16 11:00	9	63.6	60.8	60.7	63.6	-	-
18/02/16 12:00	4	63.0	59.7	60.5	63.0	-	-
18/02/16 13:00	2	68.1	67.1	61.1	68.1	-	-
18/02/16 14:00	7	66.7	65.2	61.6	66.7	-	-
18/02/16 15:00	4	60.3	49.5	60.0	60.3	-	-
18/02/16 16:00	5	66.6	65.0	60.4	66.6	-	-
18/02/16 17:00	-	62.9	-	-	62.9	-	-
18/02/16 18:00	-	66.5	-	-	66.5	-	-
18/02/16 19:00	-	75.3	-	-	-	75.3	-
18/02/16 20:00	-	66.5	-	-	-	66.5	-
18/02/16 21:00	-	69.1	-	-	-	69.1	-
18/02/16 22:00	-	74.6	-	-	-	74.6	-
18/02/16 23:00	-	65.5	-	-	-	-	65.5
	<b>55</b>	<b>69.1</b>	<b>67.8</b>	<b>67.8</b>	<b>65.2</b>	<b>72.7</b>	<b>69.9</b>

Location: NDB-Hamm NMT # 4





## Luxembourg Airport Noise Distribution by Hour

Between 18/02/2016 00:00:00 and 18/02/2016 23:59:59 (Local Time)

Day	Aircraft Events	Total LDEN dB (A)	Aircraft LDEN dB(A)	Background LDEN dB(A)	Total LDay dB(A)	Total LEvening dB(A)	Total LNight dB (A)
18/02/16 0:00	-	64.5	-	65.2	-	-	64.5
18/02/16 1:00	-	62.0	-	62.5	-	-	62.0
18/02/16 2:00	-	60.2	-	60.4	-	-	60.2
18/02/16 3:00	-	58.6	-	58.7	-	-	58.6
18/02/16 4:00	-	63.8	-	64.0	-	-	63.8
18/02/16 5:00	-	69.3	-	70.7	-	-	69.3
18/02/16 6:00	9	72.8	70.2	71.9	-	-	72.8
18/02/16 7:00	4	64.4	57.9	66.7	64.4	-	-
18/02/16 8:00	5	63.7	59.4	66.2	63.7	-	-
18/02/16 9:00	2	64.5	55.2	64.7	64.5	-	-
18/02/16 10:00	3	63.3	48.9	63.7	63.3	-	-
18/02/16 11:00	9	63.8	57.5	63.4	63.8	-	-
18/02/16 12:00	4	68.3	54.4	68.3	68.3	-	-
18/02/16 13:00	2	69.2	62.1	68.8	69.2	-	-
18/02/16 14:00	5	64.3	57.3	63.7	64.3	-	-
18/02/16 15:00	2	63.2	43.9	63.5	63.2	-	-
18/02/16 16:00	1	63.7	56.6	62.4	63.7	-	-
18/02/16 17:00	-	63.7	-	-	63.7	-	-
18/02/16 18:00	-	64.3	-	-	64.3	-	-
18/02/16 19:00	-	70.0	-	-	-	70.0	-
18/02/16 20:00	-	70.8	-	-	-	70.8	-
18/02/16 21:00	-	67.5	-	-	-	67.5	-
18/02/16 22:00	-	69.3	-	-	-	69.3	-
18/02/16 23:00	-	66.9	-	-	-	-	66.9
	<b>46</b>	<b>66.9</b>	<b>61.6</b>	<b>66.4</b>	<b>65.2</b>	<b>69.6</b>	<b>67.1</b>

Location: Gare centrale NMT # 5

