

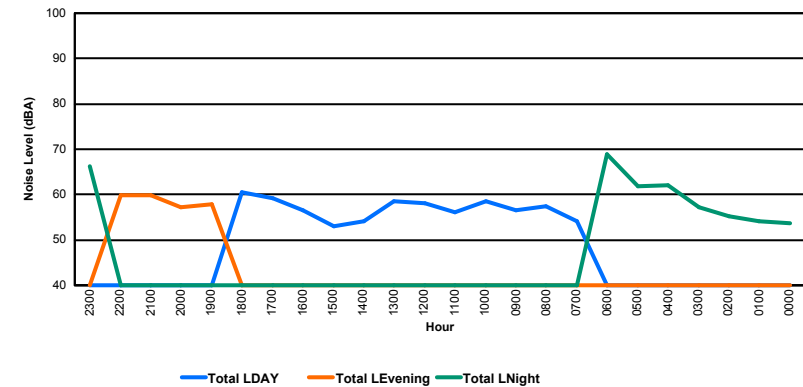
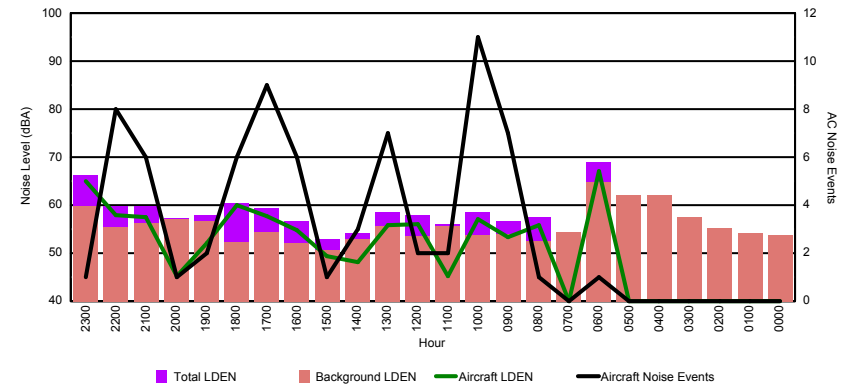


Luxembourg Airport Noise Distribution by Hour

Between 10/02/2016 00:00:00 and 10/02/2016 23:59:59 (Local Time)

Day	Aircraft Events	Total LDEN dB (A)	Aircraft LDEN dB(A)	Background LDEN dB(A)	Total LDay dB(A)	Total LEvening dB(A)	Total LNight dB (A)
10/02/16 0:00	-	53.7	-	53.7	-	-	53.7
10/02/16 1:00	-	54.2	-	54.2	-	-	54.2
10/02/16 2:00	-	55.3	-	55.3	-	-	55.3
10/02/16 3:00	-	57.3	-	57.4	-	-	57.3
10/02/16 4:00	-	62.1	-	62.1	-	-	62.1
10/02/16 5:00	-	61.9	-	62.0	-	-	61.9
10/02/16 6:00	1	68.9	67.0	64.7	-	-	68.9
10/02/16 7:00	-	54.1	-	54.3	54.1	-	-
10/02/16 8:00	1	57.4	55.8	52.4	57.4	-	-
10/02/16 9:00	7	56.6	53.4	53.9	56.6	-	-
10/02/16 10:00	11	58.6	57.1	53.8	58.6	-	-
10/02/16 11:00	2	56.0	45.2	55.7	56.0	-	-
10/02/16 12:00	2	58.0	56.0	53.6	58.0	-	-
10/02/16 13:00	7	58.6	55.8	55.6	58.6	-	-
10/02/16 14:00	3	54.1	48.1	52.9	54.1	-	-
10/02/16 15:00	1	53.0	49.3	50.6	53.0	-	-
10/02/16 16:00	6	56.6	54.8	52.1	56.6	-	-
10/02/16 17:00	9	59.3	57.7	54.4	59.3	-	-
10/02/16 18:00	6	60.5	59.9	52.3	60.5	-	-
10/02/16 19:00	2	57.9	52.0	56.7	-	57.9	-
10/02/16 20:00	1	57.3	45.3	57.1	-	57.3	-
10/02/16 21:00	6	59.8	57.4	56.2	-	59.8	-
10/02/16 22:00	8	59.8	57.9	55.5	-	59.8	-
10/02/16 23:00	1	66.3	65.1	59.7	-	-	66.3
	74	60.4	59.0	57.4	57.4	58.8	63.2

Location: Roodt/Syr NMT # 1

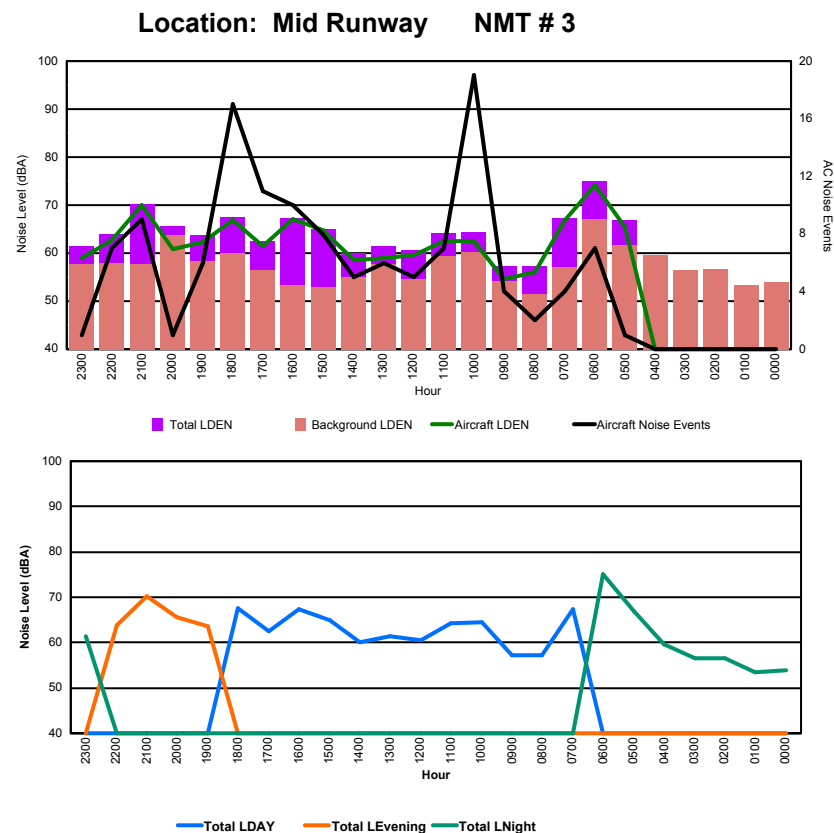




Luxembourg Airport Noise Distribution by Hour

Between 10/02/2016 00:00:00 and 10/02/2016 23:59:59 (Local Time)

Day	Aircraft Events	Total LDEN dB (A)	Aircraft LDEN dB(A)	Background LDEN dB(A)	Total LDay dB(A)	Total LEvening dB(A)	Total LNight dB (A)
10/02/16 0:00	-	53.9	-	53.9	-	-	53.9
10/02/16 1:00	-	53.4	-	53.4	-	-	53.4
10/02/16 2:00	-	56.6	-	56.6	-	-	56.6
10/02/16 3:00	-	56.5	-	56.5	-	-	56.5
10/02/16 4:00	-	59.6	-	59.6	-	-	59.6
10/02/16 5:00	1	66.9	65.4	61.7	-	-	66.9
10/02/16 6:00	7	75.0	74.2	67.0	-	-	75.0
10/02/16 7:00	4	67.3	66.9	57.0	67.3	-	-
10/02/16 8:00	2	57.3	56.0	51.4	57.3	-	-
10/02/16 9:00	4	57.2	54.5	54.1	57.2	-	-
10/02/16 10:00	19	64.4	62.4	60.2	64.4	-	-
10/02/16 11:00	7	64.2	62.5	59.4	64.2	-	-
10/02/16 12:00	5	60.6	59.5	54.5	60.6	-	-
10/02/16 13:00	6	61.4	59.0	57.8	61.4	-	-
10/02/16 14:00	5	60.1	58.6	54.9	60.1	-	-
10/02/16 15:00	8	64.9	64.7	52.9	64.9	-	-
10/02/16 16:00	10	67.3	67.1	53.3	67.3	-	-
10/02/16 17:00	11	62.6	61.4	56.5	62.6	-	-
10/02/16 18:00	17	67.6	66.8	59.9	67.6	-	-
10/02/16 19:00	6	63.7	62.3	58.3	-	63.7	-
10/02/16 20:00	1	65.6	60.8	63.8	-	65.6	-
10/02/16 21:00	9	70.3	70.1	57.7	-	70.3	-
10/02/16 22:00	7	63.9	62.7	58.0	-	63.9	-
10/02/16 23:00	1	61.4	59.0	57.7	-	-	61.4
	130	65.8	65.7	59.1	64.2	66.8	67.0



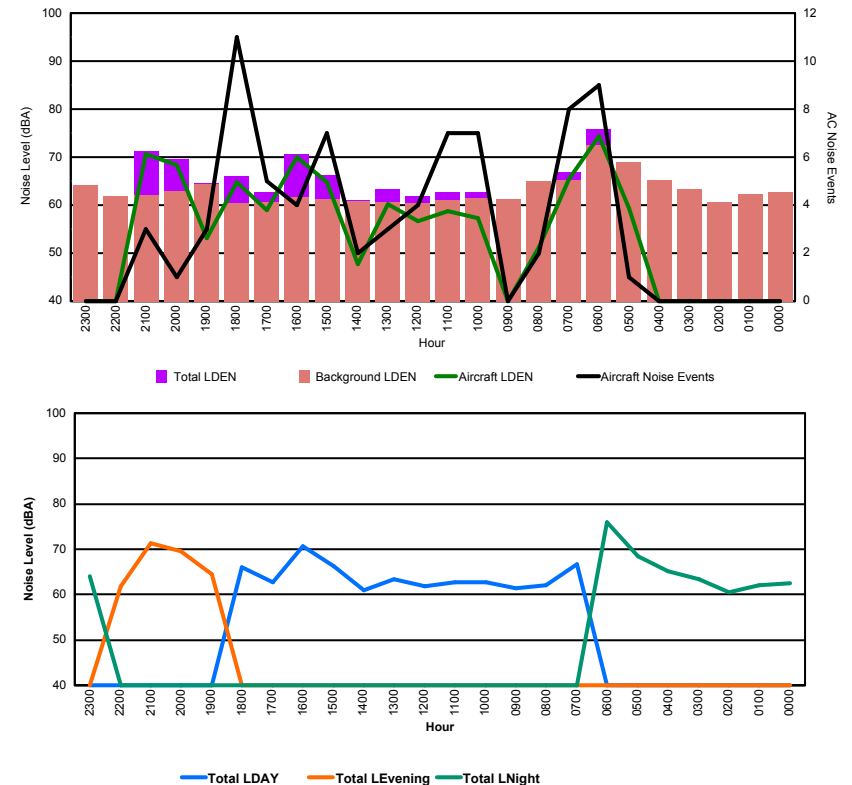


Luxembourg Airport Noise Distribution by Hour

Between 10/02/2016 00:00:00 and 10/02/2016 23:59:59 (Local Time)

Day	Aircraft Events	Total LDEN dB (A)	Aircraft LDEN dB(A)	Background LDEN dB(A)	Total LDay dB(A)	Total LEvening dB(A)	Total LNight dB (A)
10/02/16 0:00	-	62.4	-	62.8	-	-	62.4
10/02/16 1:00	-	62.0	-	62.3	-	-	62.0
10/02/16 2:00	-	60.6	-	60.7	-	-	60.6
10/02/16 3:00	-	63.4	-	63.4	-	-	63.4
10/02/16 4:00	-	65.1	-	65.3	-	-	65.1
10/02/16 5:00	1	68.4	59.4	69.0	-	-	68.4
10/02/16 6:00	9	75.9	74.4	72.4	-	-	75.9
10/02/16 7:00	8	66.8	65.4	65.2	66.8	-	-
10/02/16 8:00	2	62.0	51.3	64.9	62.0	-	-
10/02/16 9:00	-	61.3	-	61.3	61.3	-	-
10/02/16 10:00	7	62.7	57.2	61.5	62.7	-	-
10/02/16 11:00	7	62.8	58.7	61.0	62.8	-	-
10/02/16 12:00	4	61.9	56.6	60.5	61.9	-	-
10/02/16 13:00	3	63.4	60.3	60.6	63.4	-	-
10/02/16 14:00	2	61.0	47.7	60.9	61.0	-	-
10/02/16 15:00	7	66.3	64.8	61.2	66.3	-	-
10/02/16 16:00	4	70.6	70.0	61.6	70.6	-	-
10/02/16 17:00	5	62.8	58.9	60.7	62.8	-	-
10/02/16 18:00	11	66.0	64.7	60.4	66.0	-	-
10/02/16 19:00	3	64.6	53.2	64.3	-	64.6	-
10/02/16 20:00	1	69.6	68.4	62.9	-	69.6	-
10/02/16 21:00	3	71.3	70.7	62.1	-	71.3	-
10/02/16 22:00	-	61.8	-	61.8	-	61.8	-
10/02/16 23:00	-	64.1	-	64.1	-	-	64.1
	77	67.1	66.4	64.3	65.0	68.3	68.6

Location: NDB-Hamm NMT # 4





Luxembourg Airport Noise Distribution by Hour

Between 10/02/2016 00:00:00 and 10/02/2016 23:59:59 (Local Time)

Day	Aircraft Events	Total LDEN dB (A)	Aircraft LDEN dB(A)	Background LDEN dB(A)	Total LDay dB(A)	Total LEvening dB(A)	Total LNight dB (A)
10/02/16 0:00	-	64.4	-	65.3	-	-	64.4
10/02/16 1:00	-	60.9	-	61.2	-	-	60.9
10/02/16 2:00	-	60.7	-	60.8	-	-	60.7
10/02/16 3:00	-	60.6	-	60.6	-	-	60.6
10/02/16 4:00	-	64.8	-	65.0	-	-	64.8
10/02/16 5:00	-	69.1	-	70.5	-	-	69.1
10/02/16 6:00	6	72.0	67.2	72.6	-	-	72.0
10/02/16 7:00	6	64.3	58.1	66.2	64.3	-	-
10/02/16 8:00	3	65.7	53.3	68.1	65.7	-	-
10/02/16 9:00	-	64.4	-	65.3	64.4	-	-
10/02/16 10:00	7	65.5	56.6	66.7	65.5	-	-
10/02/16 11:00	6	64.2	56.5	64.5	64.2	-	-
10/02/16 12:00	3	63.5	51.6	64.1	63.5	-	-
10/02/16 13:00	4	65.4	55.9	66.2	65.4	-	-
10/02/16 14:00	-	66.4	-	67.8	66.4	-	-
10/02/16 15:00	5	64.3	56.3	64.1	64.3	-	-
10/02/16 16:00	6	66.4	61.9	66.1	66.4	-	-
10/02/16 17:00	4	63.6	53.7	63.8	63.6	-	-
10/02/16 18:00	8	63.5	57.7	62.9	63.5	-	-
10/02/16 19:00	-	67.5	-	67.7	-	67.5	-
10/02/16 20:00	1	70.0	57.9	70.0	-	70.0	-
10/02/16 21:00	3	66.9	62.5	65.1	-	66.9	-
10/02/16 22:00	-	63.3	-	63.5	-	63.3	-
10/02/16 23:00	-	66.6	-	66.7	-	-	66.6
	62	66.1	59.9	66.6	64.9	67.5	66.8

Location: Gare centrale NMT # 5

