

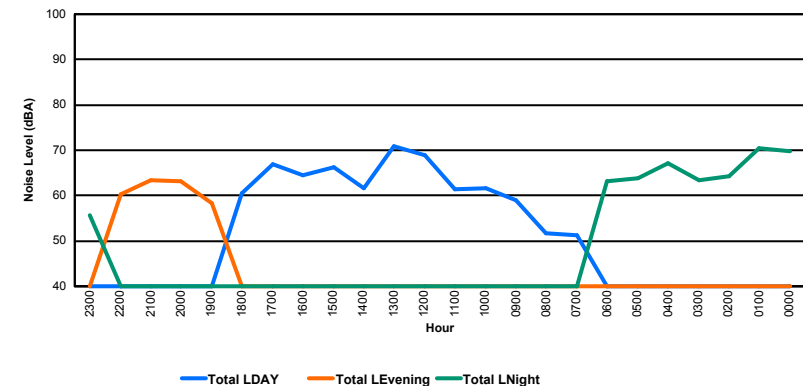
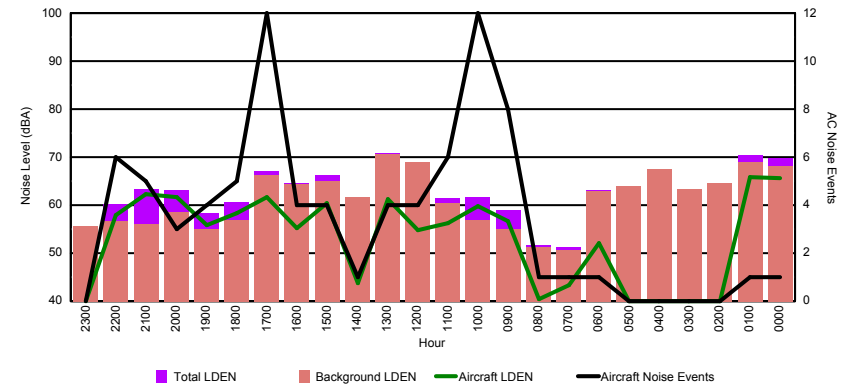


Luxembourg Airport Noise Distribution by Hour

Between 09/02/2016 00:00:00 and 09/02/2016 23:59:59 (Local Time)

Day	Aircraft Events	Total LDEN dB (A)	Aircraft LDEN dB(A)	Background LDEN dB(A)	Total LDay dB(A)	Total LEvening dB(A)	Total LNight dB (A)
09/02/16 0:00	1	69.8	65.7	68.2	-	-	69.8
09/02/16 1:00	1	70.5	65.9	69.0	-	-	70.5
09/02/16 2:00	-	64.2	-	64.5	-	-	64.2
09/02/16 3:00	-	63.4	-	63.4	-	-	63.4
09/02/16 4:00	-	67.2	-	67.5	-	-	67.2
09/02/16 5:00	-	63.8	-	63.9	-	-	63.8
09/02/16 6:00	1	63.2	52.0	62.9	-	-	63.2
09/02/16 7:00	1	51.2	43.4	50.6	51.2	-	-
09/02/16 8:00	1	51.6	40.4	51.2	51.6	-	-
09/02/16 9:00	8	58.9	56.7	55.0	58.9	-	-
09/02/16 10:00	12	61.6	59.8	56.9	61.6	-	-
09/02/16 11:00	6	61.5	56.3	60.4	61.5	-	-
09/02/16 12:00	4	68.8	54.7	69.0	68.8	-	-
09/02/16 13:00	4	70.8	61.3	70.7	70.8	-	-
09/02/16 14:00	1	61.6	43.8	61.7	61.6	-	-
09/02/16 15:00	4	66.2	60.5	65.1	66.2	-	-
09/02/16 16:00	4	64.6	55.3	64.4	64.6	-	-
09/02/16 17:00	12	67.0	61.6	66.2	67.0	-	-
09/02/16 18:00	5	60.6	58.4	56.8	60.6	-	-
09/02/16 19:00	4	58.3	55.9	54.9	-	58.3	-
09/02/16 20:00	3	63.2	61.6	58.6	-	63.2	-
09/02/16 21:00	5	63.3	62.2	56.0	-	63.3	-
09/02/16 22:00	6	60.2	58.0	56.6	-	60.2	-
09/02/16 23:00	-	55.7	-	55.7	-	-	55.7
	83	65.2	60.0	64.4	65.0	61.7	66.5

Location: Roodt/Syr NMT # 1



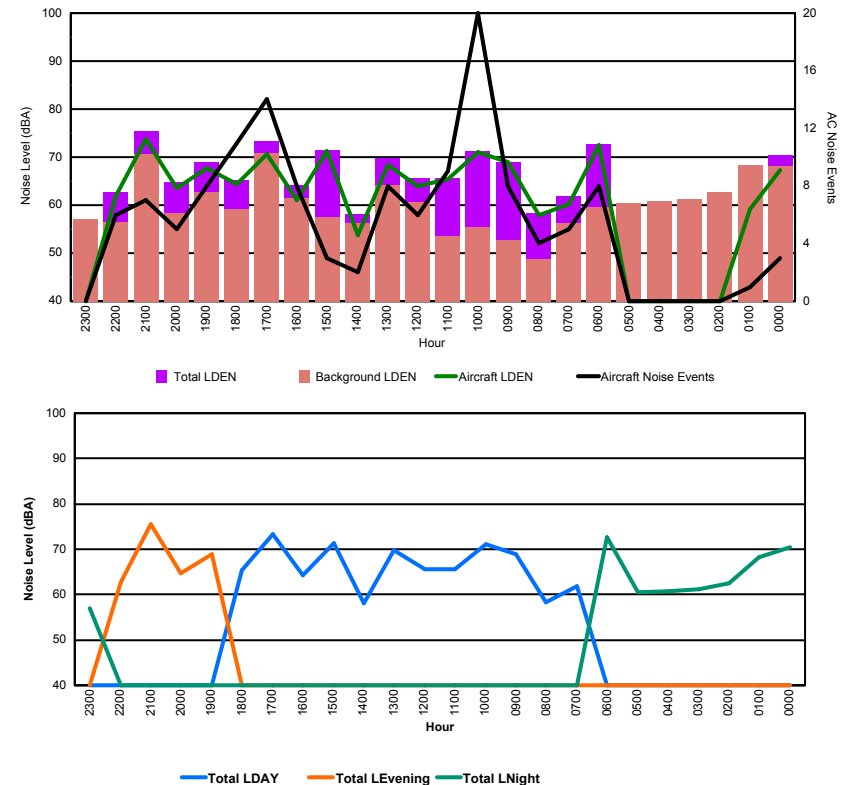


Luxembourg Airport Noise Distribution by Hour

Between 09/02/2016 00:00:00 and 09/02/2016 23:59:59 (Local Time)

Day	Aircraft Events	Total LDEN dB (A)	Aircraft LDEN dB(A)	Background LDEN dB(A)	Total LDay dB(A)	Total LEvening dB(A)	Total LNight dB (A)
09/02/16 0:00	3	70.4	67.2	68.2	-	-	70.4
09/02/16 1:00	1	68.3	59.2	68.3	-	-	68.3
09/02/16 2:00	-	62.6	-	62.8	-	-	62.6
09/02/16 3:00	-	61.2	-	61.2	-	-	61.2
09/02/16 4:00	-	60.8	-	60.8	-	-	60.8
09/02/16 5:00	-	60.5	-	60.5	-	-	60.5
09/02/16 6:00	8	72.7	72.5	59.6	-	-	72.7
09/02/16 7:00	5	61.8	60.3	56.3	61.8	-	-
09/02/16 8:00	4	58.4	57.9	48.7	58.4	-	-
09/02/16 9:00	8	69.0	68.9	52.7	69.0	-	-
09/02/16 10:00	20	71.2	71.1	55.4	71.2	-	-
09/02/16 11:00	9	65.7	65.5	53.6	65.7	-	-
09/02/16 12:00	6	65.6	64.0	60.6	65.6	-	-
09/02/16 13:00	8	69.7	68.4	64.1	69.7	-	-
09/02/16 14:00	2	58.1	53.7	56.2	58.1	-	-
09/02/16 15:00	3	71.4	71.2	57.5	71.4	-	-
09/02/16 16:00	8	64.2	61.0	61.5	64.2	-	-
09/02/16 17:00	14	73.4	70.7	70.9	73.4	-	-
09/02/16 18:00	11	65.3	64.3	59.2	65.3	-	-
09/02/16 19:00	8	69.0	67.8	62.7	-	69.0	-
09/02/16 20:00	5	64.7	63.6	58.3	-	64.7	-
09/02/16 21:00	7	75.5	73.7	70.7	-	75.5	-
09/02/16 22:00	6	62.8	61.8	56.4	-	62.8	-
09/02/16 23:00	-	57.0	-	57.0	-	-	57.0
	136	68.6	68.1	63.6	68.4	70.8	67.2

Location: Mid Runway NMT # 3



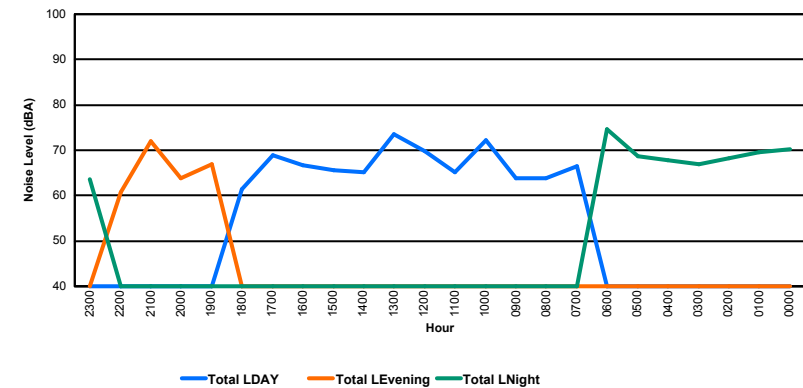
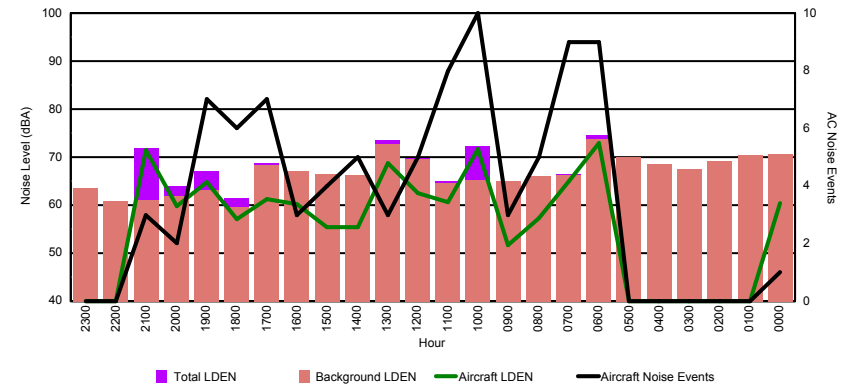


Luxembourg Airport Noise Distribution by Hour

Between 09/02/2016 00:00:00 and 09/02/2016 23:59:59 (Local Time)

Day	Aircraft Events	Total LDEN dB (A)	Aircraft LDEN dB(A)	Background LDEN dB(A)	Total LDay dB(A)	Total LEvening dB(A)	Total LNight dB (A)
09/02/16 0:00	1	70.2	60.5	70.7	-	-	70.2
09/02/16 1:00	-	69.6	-	70.4	-	-	69.6
09/02/16 2:00	-	68.2	-	69.1	-	-	68.2
09/02/16 3:00	-	67.0	-	67.4	-	-	67.0
09/02/16 4:00	-	67.7	-	68.6	-	-	67.7
09/02/16 5:00	-	68.6	-	70.1	-	-	68.6
09/02/16 6:00	9	74.6	73.0	73.7	-	-	74.6
09/02/16 7:00	9	66.4	65.1	66.3	66.4	-	-
09/02/16 8:00	5	63.9	57.2	66.0	63.9	-	-
09/02/16 9:00	3	63.9	51.6	65.1	63.9	-	-
09/02/16 10:00	10	72.3	71.7	65.3	72.3	-	-
09/02/16 11:00	8	65.1	60.6	64.5	65.1	-	-
09/02/16 12:00	5	69.8	62.5	69.6	69.8	-	-
09/02/16 13:00	3	73.5	68.7	72.7	73.5	-	-
09/02/16 14:00	5	65.2	55.4	66.2	65.2	-	-
09/02/16 15:00	4	65.6	55.4	66.4	65.6	-	-
09/02/16 16:00	3	66.8	60.3	67.0	66.8	-	-
09/02/16 17:00	7	68.8	61.3	68.4	68.8	-	-
09/02/16 18:00	6	61.4	57.0	59.6	61.4	-	-
09/02/16 19:00	7	67.0	64.8	63.1	-	67.0	-
09/02/16 20:00	2	63.9	59.7	61.9	-	63.9	-
09/02/16 21:00	3	71.9	71.5	61.0	-	71.9	-
09/02/16 22:00	-	60.8	-	60.8	-	60.8	-
09/02/16 23:00	-	63.6	-	63.6	-	-	63.6
	90	68.8	66.3	68.0	68.4	67.8	69.7

Location: NDB-Hamm NMT # 4





Luxembourg Airport Noise Distribution by Hour

Between 09/02/2016 00:00:00 and 09/02/2016 23:59:59 (Local Time)

Day	Aircraft Events	Total LDEN dB (A)	Aircraft LDEN dB(A)	Background LDEN dB(A)	Total LDay dB(A)	Total LEvening dB(A)	Total LNight dB (A)
09/02/16 0:00	1	72.1	59.2	72.5	-	-	72.1
09/02/16 1:00	-	70.2	-	70.8	-	-	70.2
09/02/16 2:00	-	67.9	-	68.6	-	-	67.9
09/02/16 3:00	-	65.5	-	65.7	-	-	65.5
09/02/16 4:00	-	66.3	-	66.6	-	-	66.3
09/02/16 5:00	-	68.7	-	69.8	-	-	68.7
09/02/16 6:00	2	72.5	67.6	72.2	-	-	72.5
09/02/16 7:00	4	66.4	57.7	69.3	66.4	-	-
09/02/16 8:00	1	66.2	49.6	69.1	66.2	-	-
09/02/16 9:00	-	66.8	-	68.4	66.8	-	-
09/02/16 10:00	3	67.0	60.3	67.8	67.0	-	-
09/02/16 11:00	4	65.6	57.8	66.5	65.6	-	-
09/02/16 12:00	4	73.0	63.0	73.1	73.0	-	-
09/02/16 13:00	1	73.3	56.3	73.9	73.3	-	-
09/02/16 14:00	-	67.6	-	68.9	67.6	-	-
09/02/16 15:00	2	67.7	49.4	68.9	67.7	-	-
09/02/16 16:00	1	67.7	56.7	68.6	67.7	-	-
09/02/16 17:00	1	68.7	56.0	69.5	68.7	-	-
09/02/16 18:00	4	64.1	56.9	64.3	64.1	-	-
09/02/16 19:00	4	69.1	60.6	69.5	-	69.1	-
09/02/16 20:00	1	68.2	56.5	68.5	-	68.2	-
09/02/16 21:00	4	70.2	65.0	69.5	-	70.2	-
09/02/16 22:00	-	62.5	-	62.6	-	62.5	-
09/02/16 23:00	-	66.2	-	66.2	-	-	66.2
	37	68.9	60.7	69.5	68.8	68.3	69.4

Location: Gare centrale NMT # 5

