

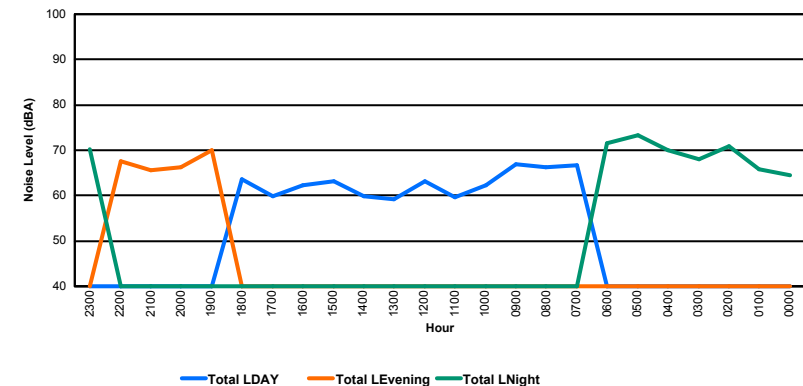
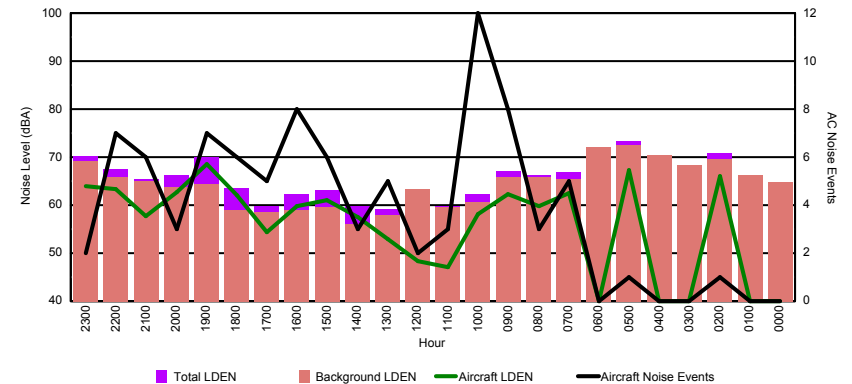


Luxembourg Airport Noise Distribution by Hour

Between 08/02/2016 00:00:00 and 08/02/2016 23:59:59 (Local Time)

Day	Aircraft Events	Total LDEN dB (A)	Aircraft LDEN dB(A)	Background LDEN dB(A)	Total LDay dB(A)	Total LEvening dB(A)	Total LNight dB (A)
08/02/16 0:00	-	64.5	-	64.8	-	-	64.5
08/02/16 1:00	-	65.9	-	66.3	-	-	65.9
08/02/16 2:00	1	70.8	66.1	69.5	-	-	70.8
08/02/16 3:00	-	68.1	-	68.3	-	-	68.1
08/02/16 4:00	-	70.0	-	70.4	-	-	70.0
08/02/16 5:00	1	73.3	67.3	72.6	-	-	73.3
08/02/16 6:00	-	71.6	-	72.1	-	-	71.6
08/02/16 7:00	5	66.8	62.6	65.4	66.8	-	-
08/02/16 8:00	3	66.2	59.8	65.9	66.2	-	-
08/02/16 9:00	8	67.0	62.2	65.9	67.0	-	-
08/02/16 10:00	12	62.3	58.2	60.7	62.3	-	-
08/02/16 11:00	3	59.7	47.1	59.6	59.7	-	-
08/02/16 12:00	2	63.1	48.3	63.3	63.1	-	-
08/02/16 13:00	5	59.1	52.9	58.0	59.1	-	-
08/02/16 14:00	3	59.8	57.5	56.1	59.8	-	-
08/02/16 15:00	6	63.2	61.0	59.5	63.2	-	-
08/02/16 16:00	8	62.2	59.8	58.9	62.2	-	-
08/02/16 17:00	5	59.8	54.3	58.6	59.8	-	-
08/02/16 18:00	6	63.6	62.0	58.9	63.6	-	-
08/02/16 19:00	7	69.9	68.6	64.4	-	69.9	-
08/02/16 20:00	3	66.2	62.8	63.7	-	66.2	-
08/02/16 21:00	6	65.5	57.8	64.9	-	65.5	-
08/02/16 22:00	7	67.6	63.3	65.9	-	67.6	-
08/02/16 23:00	2	70.2	64.0	69.1	-	-	70.2
	93	67.4	62.5	66.5	63.6	67.6	70.1

Location: Roodt/Syr NMT # 1

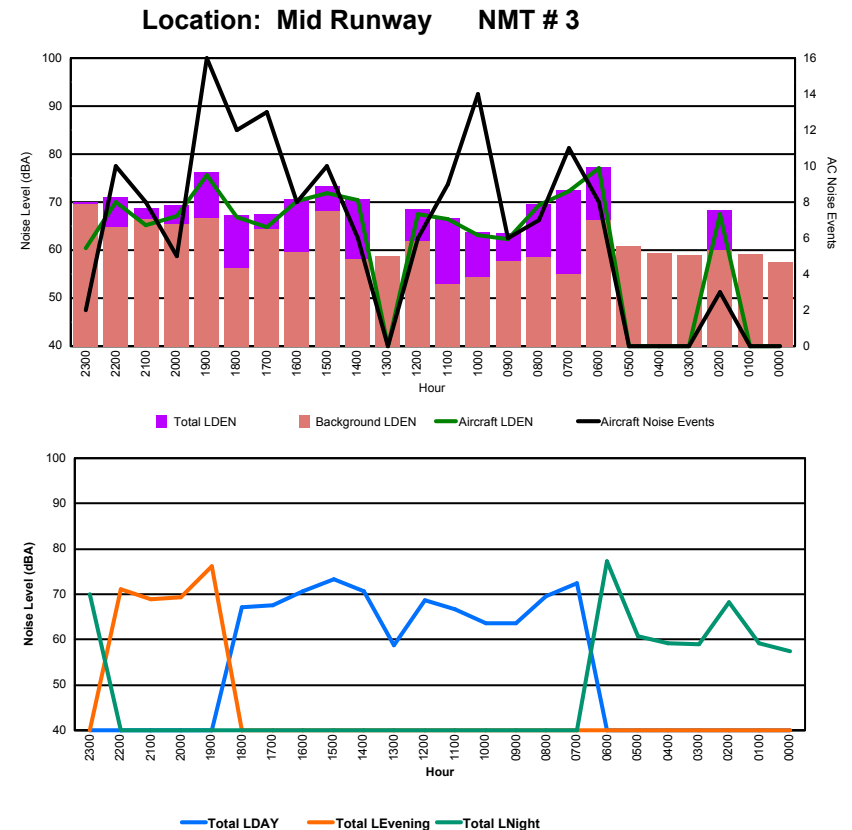




Luxembourg Airport Noise Distribution by Hour

Between 08/02/2016 00:00:00 and 08/02/2016 23:59:59 (Local Time)

Day	Aircraft Events	Total LDEN dB (A)	Aircraft LDEN dB(A)	Background LDEN dB(A)	Total LDay dB(A)	Total LEvening dB(A)	Total LNight dB (A)
08/02/16 0:00	-	57.5	-	57.6	-	-	57.5
08/02/16 1:00	-	59.1	-	59.2	-	-	59.1
08/02/16 2:00	3	68.3	67.6	59.9	-	-	68.3
08/02/16 3:00	-	58.9	-	59.0	-	-	58.9
08/02/16 4:00	-	59.3	-	59.3	-	-	59.3
08/02/16 5:00	-	60.8	-	60.8	-	-	60.8
08/02/16 6:00	8	77.3	77.0	66.2	-	-	77.3
08/02/16 7:00	11	72.4	72.3	55.0	72.4	-	-
08/02/16 8:00	7	69.6	69.3	58.6	69.6	-	-
08/02/16 9:00	6	63.5	62.3	57.7	63.5	-	-
08/02/16 10:00	14	63.7	63.2	54.4	63.7	-	-
08/02/16 11:00	9	66.7	66.5	52.9	66.7	-	-
08/02/16 12:00	6	68.6	67.6	61.9	68.6	-	-
08/02/16 13:00	-	58.7	-	58.8	58.7	-	-
08/02/16 14:00	6	70.7	70.4	58.2	70.7	-	-
08/02/16 15:00	10	73.4	71.9	68.2	73.4	-	-
08/02/16 16:00	8	70.6	70.3	59.5	70.6	-	-
08/02/16 17:00	13	67.5	64.7	64.4	67.5	-	-
08/02/16 18:00	12	67.2	66.8	56.3	67.2	-	-
08/02/16 19:00	16	76.2	75.7	66.7	-	76.2	-
08/02/16 20:00	5	69.3	67.0	65.4	-	69.3	-
08/02/16 21:00	8	68.8	65.3	66.4	-	68.8	-
08/02/16 22:00	10	71.0	70.0	64.7	-	71.0	-
08/02/16 23:00	2	69.9	60.4	69.6	-	-	69.9
	154	70.1	70.4	63.2	69.2	72.5	69.7



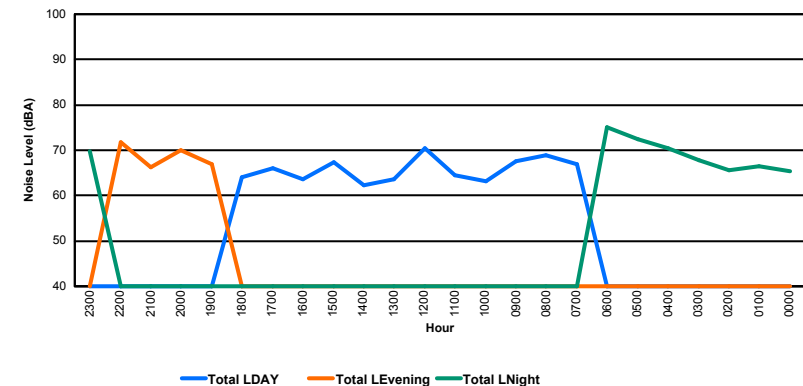
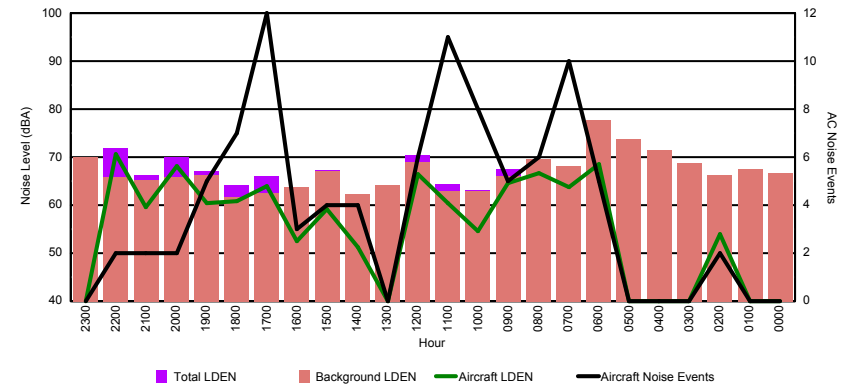


Luxembourg Airport Noise Distribution by Hour

Between 08/02/2016 00:00:00 and 08/02/2016 23:59:59 (Local Time)

Day	Aircraft Events	Total LDEN dB (A)	Aircraft LDEN dB(A)	Background LDEN dB(A)	Total LDay dB(A)	Total LEvening dB(A)	Total LNight dB (A)
08/02/16 0:00	-	65.4	-	66.7	-	-	65.4
08/02/16 1:00	-	66.4	-	67.6	-	-	66.4
08/02/16 2:00	2	65.5	54.0	66.3	-	-	65.5
08/02/16 3:00	-	67.9	-	68.8	-	-	67.9
08/02/16 4:00	-	70.4	-	71.4	-	-	70.4
08/02/16 5:00	-	72.5	-	73.8	-	-	72.5
08/02/16 6:00	5	75.1	68.5	77.7	-	-	75.1
08/02/16 7:00	10	67.0	63.7	68.2	67.0	-	-
08/02/16 8:00	6	69.0	66.6	69.5	69.0	-	-
08/02/16 9:00	5	67.6	64.5	66.1	67.6	-	-
08/02/16 10:00	8	63.1	54.6	63.0	63.1	-	-
08/02/16 11:00	11	64.4	60.5	63.0	64.4	-	-
08/02/16 12:00	6	70.5	66.4	68.9	70.5	-	-
08/02/16 13:00	-	63.5	-	64.1	63.5	-	-
08/02/16 14:00	4	62.3	51.3	62.3	62.3	-	-
08/02/16 15:00	4	67.3	59.2	67.0	67.3	-	-
08/02/16 16:00	3	63.7	52.6	63.8	63.7	-	-
08/02/16 17:00	12	66.1	64.0	62.6	66.1	-	-
08/02/16 18:00	7	64.1	60.9	61.7	64.1	-	-
08/02/16 19:00	5	67.0	60.5	66.2	-	67.0	-
08/02/16 20:00	2	70.1	68.1	65.8	-	70.1	-
08/02/16 21:00	2	66.2	59.6	65.3	-	66.2	-
08/02/16 22:00	2	71.8	70.7	65.8	-	71.8	-
08/02/16 23:00	-	69.7	-	70.0	-	-	69.7
	94	68.6	64.5	69.0	66.5	69.4	70.4

Location: NDB-Hamm NMT # 4





Luxembourg Airport Noise Distribution by Hour

Between 08/02/2016 00:00:00 and 08/02/2016 23:59:59 (Local Time)

Day	Aircraft Events	Total LDEN dB (A)	Aircraft LDEN dB(A)	Background LDEN dB(A)	Total LDay dB(A)	Total LEvening dB(A)	Total LNight dB (A)
08/02/16 0:00	-	66.1	-	67.2	-	-	66.1
08/02/16 1:00	-	65.1	-	65.8	-	-	65.1
08/02/16 2:00	-	66.7	-	67.4	-	-	66.7
08/02/16 3:00	-	67.3	-	67.7	-	-	67.3
08/02/16 4:00	-	73.5	-	74.0	-	-	73.5
08/02/16 5:00	-	72.3	-	73.4	-	-	72.3
08/02/16 6:00	-	77.0	-	81.0	-	-	77.0
08/02/16 7:00	3	67.2	58.0	69.8	67.2	-	-
08/02/16 8:00	1	68.8	58.1	73.0	68.8	-	-
08/02/16 9:00	3	66.5	58.4	67.2	66.5	-	-
08/02/16 10:00	3	63.6	51.0	64.3	63.6	-	-
08/02/16 11:00	7	64.5	57.4	64.9	64.5	-	-
08/02/16 12:00	5	68.6	62.9	68.2	68.6	-	-
08/02/16 13:00	-	64.8	-	65.6	64.8	-	-
08/02/16 14:00	2	63.7	49.8	64.3	63.7	-	-
08/02/16 15:00	1	66.8	51.9	67.1	66.8	-	-
08/02/16 16:00	1	65.5	43.0	66.0	65.5	-	-
08/02/16 17:00	4	63.4	52.4	63.5	63.4	-	-
08/02/16 18:00	3	62.9	55.7	62.3	62.9	-	-
08/02/16 19:00	3	67.8	54.4	68.0	-	67.8	-
08/02/16 20:00	2	68.6	59.6	68.4	-	68.6	-
08/02/16 21:00	1	67.2	52.5	67.3	-	67.2	-
08/02/16 22:00	2	67.5	63.6	65.7	-	67.5	-
08/02/16 23:00	-	72.8	-	73.3	-	-	72.8
	41	69.2	57.8	71.0	66.0	67.8	72.0

Location: Gare centrale NMT # 5

