

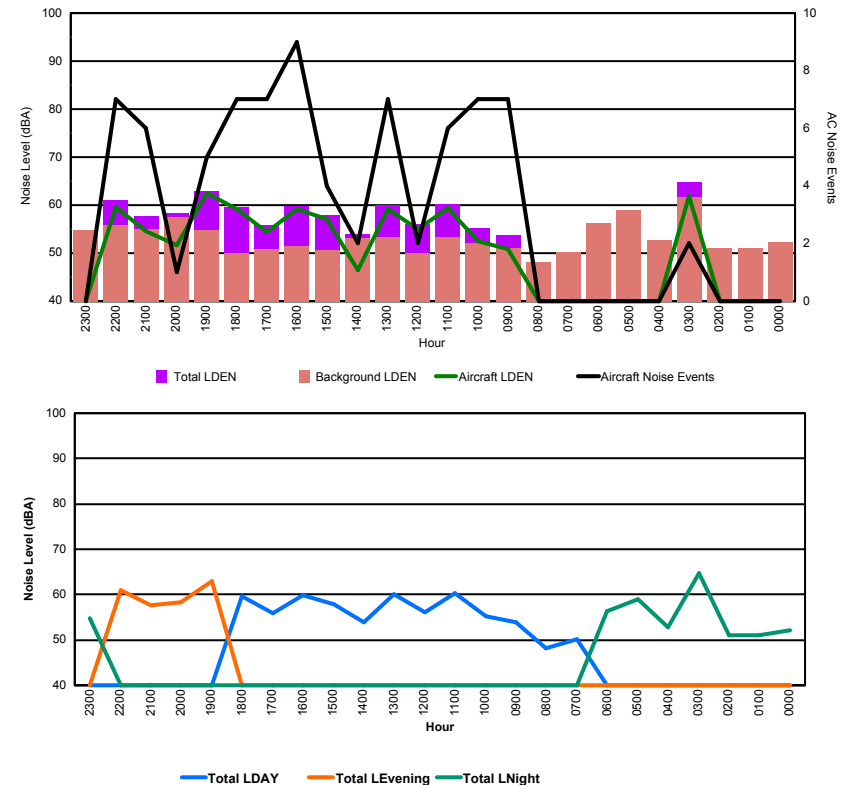


Luxembourg Airport Noise Distribution by Hour

Between 05/02/2016 00:00:00 and 05/02/2016 23:59:59 (Local Time)

Day	Aircraft Events	Total LDEN dB (A)	Aircraft LDEN dB(A)	Background LDEN dB(A)	Total LDay dB(A)	Total LEvening dB(A)	Total LNight dB (A)
05/02/16 0:00	-	52.2	-	52.2	-	-	52.2
05/02/16 1:00	-	51.1	-	51.1	-	-	51.1
05/02/16 2:00	-	51.0	-	51.0	-	-	51.0
05/02/16 3:00	2	64.8	61.8	61.7	-	-	64.8
05/02/16 4:00	-	52.8	-	52.8	-	-	52.8
05/02/16 5:00	-	59.0	-	59.0	-	-	59.0
05/02/16 6:00	-	56.3	-	56.3	-	-	56.3
05/02/16 7:00	-	50.2	-	50.3	50.2	-	-
05/02/16 8:00	-	48.2	-	48.2	48.2	-	-
05/02/16 9:00	7	53.8	50.9	51.0	53.8	-	-
05/02/16 10:00	7	55.2	52.6	52.0	55.2	-	-
05/02/16 11:00	6	60.2	59.3	53.4	60.2	-	-
05/02/16 12:00	2	56.1	54.9	49.9	56.1	-	-
05/02/16 13:00	7	60.1	59.2	53.3	60.1	-	-
05/02/16 14:00	2	54.0	46.5	53.1	54.0	-	-
05/02/16 15:00	4	57.9	57.0	50.7	57.9	-	-
05/02/16 16:00	9	59.8	59.2	51.5	59.8	-	-
05/02/16 17:00	7	55.9	54.3	50.9	55.9	-	-
05/02/16 18:00	7	59.6	59.2	50.0	59.6	-	-
05/02/16 19:00	5	63.0	62.4	54.8	-	63.0	-
05/02/16 20:00	1	58.4	51.6	57.5	-	58.4	-
05/02/16 21:00	6	57.7	54.6	55.1	-	57.7	-
05/02/16 22:00	7	61.0	59.5	55.9	-	61.0	-
05/02/16 23:00	-	54.8	-	54.8	-	-	54.8
	79	58.2	57.9	54.6	57.2	60.5	58.1

Location: Roodt/Syr NMT # 1



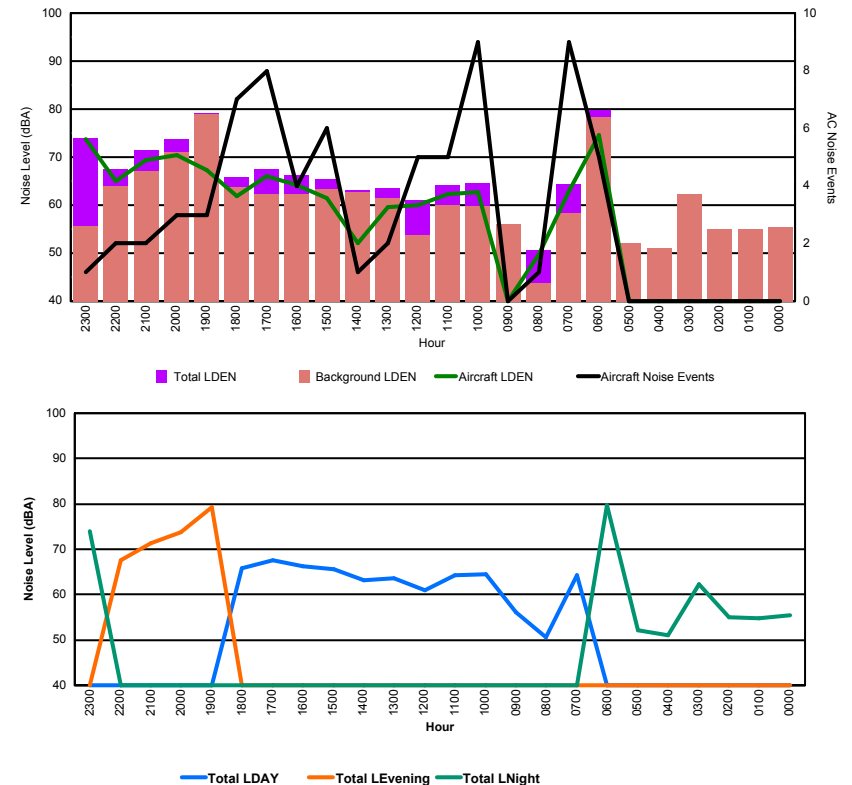


Luxembourg Airport Noise Distribution by Hour

Between 05/02/2016 00:00:00 and 05/02/2016 23:59:59 (Local Time)

Day	Aircraft Events	Total LDEN dB (A)	Aircraft LDEN dB(A)	Background LDEN dB(A)	Total LDay dB(A)	Total LEvening dB(A)	Total LNight dB (A)
05/02/16 0:00	-	55.4	-	55.4	-	-	55.4
05/02/16 1:00	-	54.8	-	54.9	-	-	54.8
05/02/16 2:00	-	55.0	-	55.1	-	-	55.0
05/02/16 3:00	-	62.3	-	62.3	-	-	62.3
05/02/16 4:00	-	51.0	-	51.0	-	-	51.0
05/02/16 5:00	-	52.1	-	52.1	-	-	52.1
05/02/16 6:00	5	79.8	74.6	78.3	-	-	79.8
05/02/16 7:00	9	64.3	63.0	58.4	64.3	-	-
05/02/16 8:00	1	50.7	49.7	43.8	50.7	-	-
05/02/16 9:00	-	56.0	-	56.1	56.0	-	-
05/02/16 10:00	9	64.5	62.7	59.8	64.5	-	-
05/02/16 11:00	5	64.2	62.2	60.1	64.2	-	-
05/02/16 12:00	5	61.0	60.1	53.8	61.0	-	-
05/02/16 13:00	2	63.6	59.5	61.5	63.6	-	-
05/02/16 14:00	1	63.1	52.0	62.7	63.1	-	-
05/02/16 15:00	6	65.5	61.4	63.4	65.5	-	-
05/02/16 16:00	4	66.3	64.2	62.2	66.3	-	-
05/02/16 17:00	8	67.6	66.1	62.2	67.6	-	-
05/02/16 18:00	7	65.9	61.9	63.8	65.9	-	-
05/02/16 19:00	3	79.2	67.3	79.0	-	79.2	-
05/02/16 20:00	3	73.8	70.5	71.1	-	73.8	-
05/02/16 21:00	2	71.4	69.4	67.0	-	71.4	-
05/02/16 22:00	2	67.6	65.1	64.0	-	67.6	-
05/02/16 23:00	1	73.9	73.8	55.7	-	-	73.9
	73	70.7	67.6	68.9	64.2	75.0	71.9

Location: Mid Runway NMT # 3



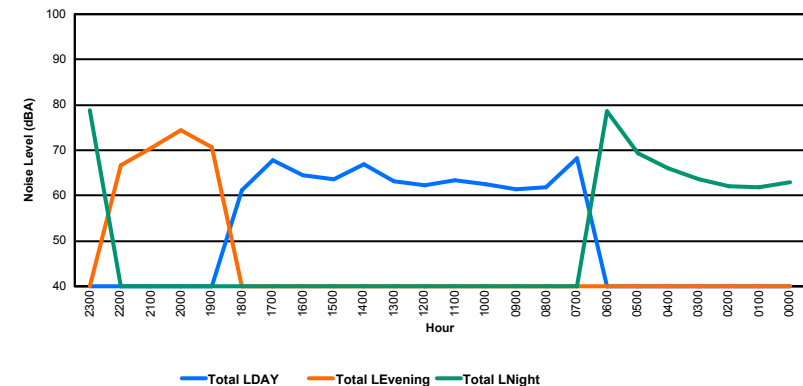
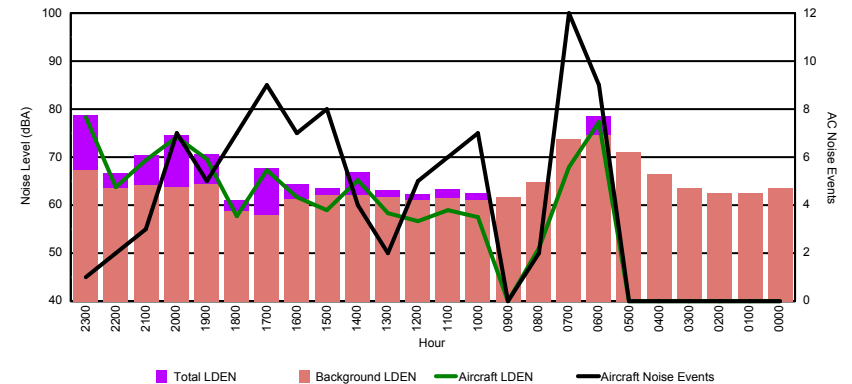


Luxembourg Airport Noise Distribution by Hour

Between 05/02/2016 00:00:00 and 05/02/2016 23:59:59 (Local Time)

Day	Aircraft Events	Total LDEN dB (A)	Aircraft LDEN dB(A)	Background LDEN dB(A)	Total LDay dB(A)	Total LEvening dB(A)	Total LNight dB (A)
05/02/16 0:00	-	62.9	-	63.5	-	-	62.9
05/02/16 1:00	-	61.9	-	62.4	-	-	61.9
05/02/16 2:00	-	62.0	-	62.4	-	-	62.0
05/02/16 3:00	-	63.5	-	63.6	-	-	63.5
05/02/16 4:00	-	66.1	-	66.5	-	-	66.1
05/02/16 5:00	-	69.4	-	71.0	-	-	69.4
05/02/16 6:00	9	78.5	77.2	74.6	-	-	78.5
05/02/16 7:00	12	68.3	67.9	73.7	68.3	-	-
05/02/16 8:00	2	61.9	51.1	64.7	61.9	-	-
05/02/16 9:00	-	61.4	-	61.6	61.4	-	-
05/02/16 10:00	7	62.5	57.4	61.1	62.5	-	-
05/02/16 11:00	6	63.3	59.0	61.4	63.3	-	-
05/02/16 12:00	5	62.3	56.6	61.1	62.3	-	-
05/02/16 13:00	2	63.2	58.3	61.6	63.2	-	-
05/02/16 14:00	4	66.9	65.3	62.0	66.9	-	-
05/02/16 15:00	8	63.6	59.0	62.0	63.6	-	-
05/02/16 16:00	7	64.4	61.6	61.3	64.4	-	-
05/02/16 17:00	9	67.7	67.3	57.9	67.7	-	-
05/02/16 18:00	7	61.1	57.8	58.7	61.1	-	-
05/02/16 19:00	5	70.7	69.6	64.3	-	70.7	-
05/02/16 20:00	7	74.5	74.1	63.7	-	74.5	-
05/02/16 21:00	3	70.4	69.3	64.1	-	70.4	-
05/02/16 22:00	2	66.6	63.8	63.5	-	66.6	-
05/02/16 23:00	1	78.8	78.4	67.2	-	-	78.8
	96	70.3	70.4	66.5	64.6	71.4	73.2

Location: NDB-Hamm NMT # 4



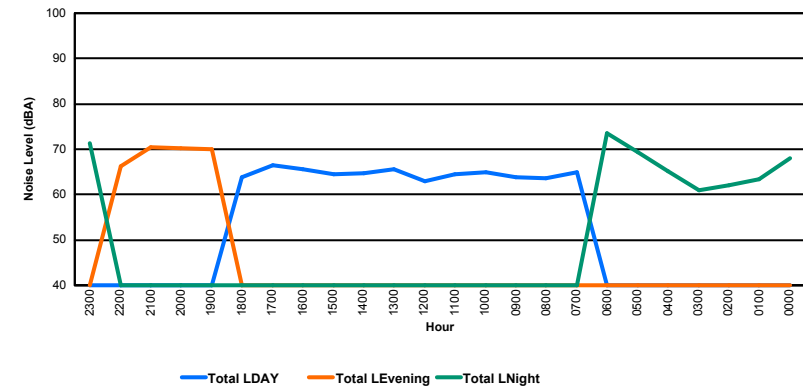
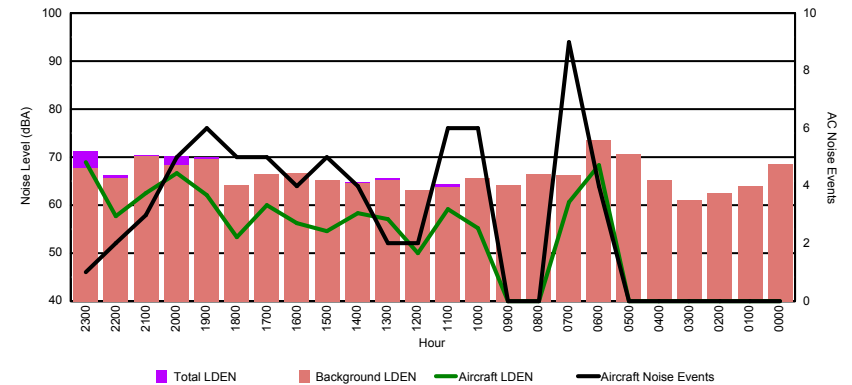


Luxembourg Airport Noise Distribution by Hour

Between 05/02/2016 00:00:00 and 05/02/2016 23:59:59 (Local Time)

Day	Aircraft Events	Total LDEN dB (A)	Aircraft LDEN dB(A)	Background LDEN dB(A)	Total LDay dB(A)	Total LEvening dB(A)	Total LNight dB (A)
05/02/16 0:00	-	68.1	-	68.6	-	-	68.1
05/02/16 1:00	-	63.4	-	64.0	-	-	63.4
05/02/16 2:00	-	62.1	-	62.5	-	-	62.1
05/02/16 3:00	-	61.0	-	61.0	-	-	61.0
05/02/16 4:00	-	65.1	-	65.3	-	-	65.1
05/02/16 5:00	-	69.3	-	70.6	-	-	69.3
05/02/16 6:00	4	73.5	68.4	73.6	-	-	73.5
05/02/16 7:00	9	64.9	60.6	66.2	64.9	-	-
05/02/16 8:00	-	63.6	-	66.4	63.6	-	-
05/02/16 9:00	-	63.8	-	64.2	63.8	-	-
05/02/16 10:00	6	65.0	55.3	65.6	65.0	-	-
05/02/16 11:00	6	64.4	59.2	63.7	64.4	-	-
05/02/16 12:00	2	63.0	49.9	63.1	63.0	-	-
05/02/16 13:00	2	65.6	57.1	65.3	65.6	-	-
05/02/16 14:00	4	64.8	58.4	64.6	64.8	-	-
05/02/16 15:00	5	64.5	54.6	65.2	64.5	-	-
05/02/16 16:00	4	65.7	56.3	66.6	65.7	-	-
05/02/16 17:00	5	66.5	60.0	66.4	66.5	-	-
05/02/16 18:00	5	63.8	53.3	64.2	63.8	-	-
05/02/16 19:00	6	69.9	62.0	69.5	-	69.9	-
05/02/16 20:00	5	70.3	66.6	68.3	-	70.3	-
05/02/16 21:00	3	70.4	62.5	70.2	-	70.4	-
05/02/16 22:00	2	66.2	57.8	65.7	-	66.2	-
05/02/16 23:00	1	71.3	68.9	67.7	-	-	71.3
	69	67.4	62.5	67.2	64.7	69.5	68.7

Location: Gare centrale NMT # 5



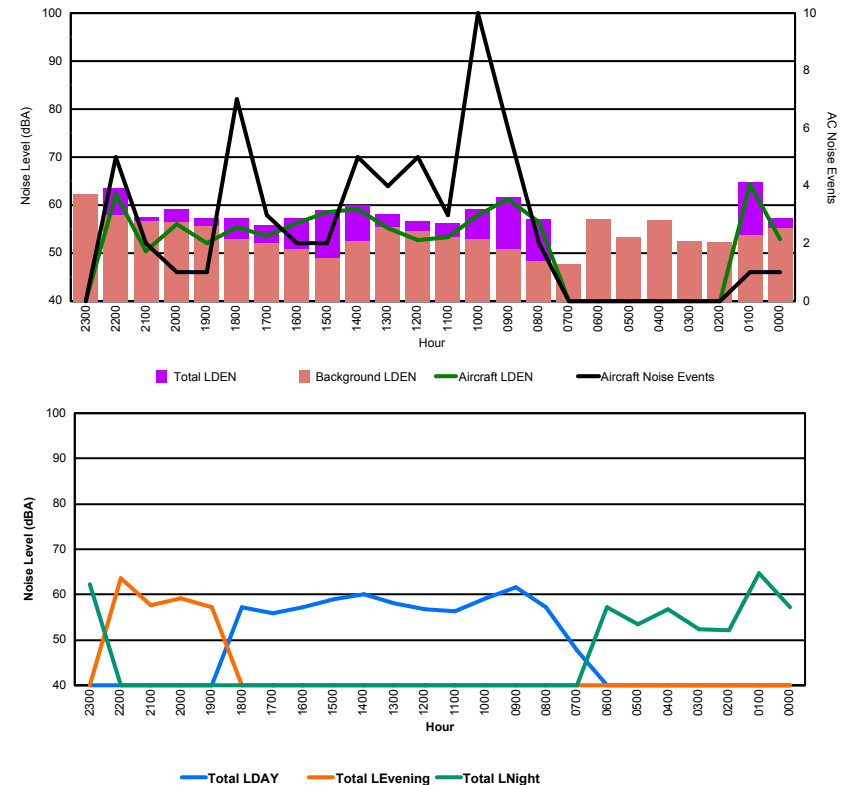


Luxembourg Airport Noise Distribution by Hour

Between 06/02/2016 00:00:00 and 06/02/2016 23:59:59 (Local Time)

Day	Aircraft Events	Total LDEN dB (A)	Aircraft LDEN dB(A)	Background LDEN dB(A)	Total LDay dB(A)	Total LEvening dB(A)	Total LNight dB (A)
06/02/16 0:00	1	57.2	52.9	55.3	-	-	57.2
06/02/16 1:00	1	64.7	64.3	53.8	-	-	64.7
06/02/16 2:00	-	52.2	-	52.2	-	-	52.2
06/02/16 3:00	-	52.4	-	52.4	-	-	52.4
06/02/16 4:00	-	56.7	-	56.8	-	-	56.7
06/02/16 5:00	-	53.4	-	53.4	-	-	53.4
06/02/16 6:00	-	57.1	-	57.1	-	-	57.1
06/02/16 7:00	-	47.7	-	47.7	47.7	-	-
06/02/16 8:00	2	57.1	56.5	48.4	57.1	-	-
06/02/16 9:00	6	61.7	61.3	50.8	61.7	-	-
06/02/16 10:00	10	59.1	58.0	53.0	59.1	-	-
06/02/16 11:00	3	56.3	53.3	53.4	56.3	-	-
06/02/16 12:00	5	56.7	52.8	54.5	56.7	-	-
06/02/16 13:00	4	58.2	55.2	55.4	58.2	-	-
06/02/16 14:00	5	60.0	59.2	52.4	60.0	-	-
06/02/16 15:00	2	59.0	58.6	48.9	59.0	-	-
06/02/16 16:00	2	57.3	56.2	50.9	57.3	-	-
06/02/16 17:00	3	55.8	53.6	52.0	55.8	-	-
06/02/16 18:00	7	57.3	55.5	52.9	57.3	-	-
06/02/16 19:00	1	57.3	52.1	55.7	-	57.3	-
06/02/16 20:00	1	59.2	56.0	56.4	-	59.2	-
06/02/16 21:00	2	57.6	50.5	56.7	-	57.6	-
06/02/16 22:00	5	63.6	62.3	58.0	-	63.6	-
06/02/16 23:00	-	62.3	-	62.3	-	-	62.3
	60	58.9	58.1	55.1	58.1	60.2	59.2

Location: Roodt/Syr NMT # 1



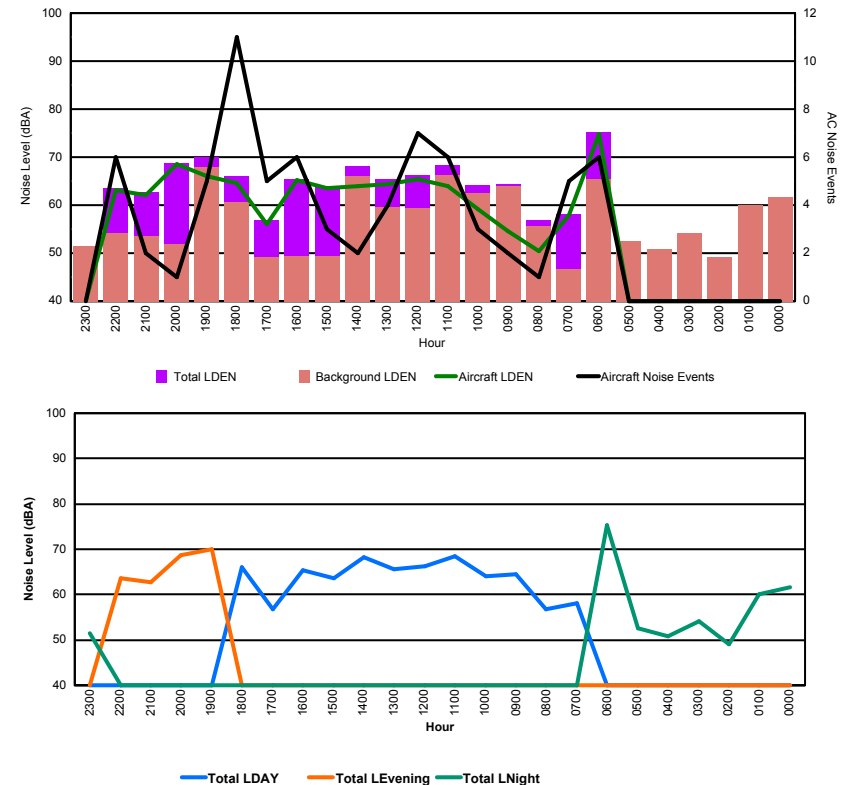


Luxembourg Airport Noise Distribution by Hour

Between 06/02/2016 00:00:00 and 06/02/2016 23:59:59 (Local Time)

Day	Aircraft Events	Total LDEN dB (A)	Aircraft LDEN dB(A)	Background LDEN dB(A)	Total LDay dB(A)	Total LEvening dB(A)	Total LNight dB (A)
06/02/16 0:00	-	61.6	-	61.6	-	-	61.6
06/02/16 1:00	-	60.0	-	60.0	-	-	60.0
06/02/16 2:00	-	49.1	-	49.1	-	-	49.1
06/02/16 3:00	-	54.2	-	54.2	-	-	54.2
06/02/16 4:00	-	50.8	-	50.8	-	-	50.8
06/02/16 5:00	-	52.5	-	52.5	-	-	52.5
06/02/16 6:00	6	75.2	74.7	65.4	-	-	75.2
06/02/16 7:00	5	58.2	57.9	46.6	58.2	-	-
06/02/16 8:00	1	56.8	50.4	55.7	56.8	-	-
06/02/16 9:00	2	64.4	54.6	63.9	64.4	-	-
06/02/16 10:00	3	64.1	59.1	62.6	64.1	-	-
06/02/16 11:00	6	68.4	64.0	66.3	68.4	-	-
06/02/16 12:00	7	66.3	65.4	59.4	66.3	-	-
06/02/16 13:00	4	65.5	64.3	59.5	65.5	-	-
06/02/16 14:00	2	68.2	63.9	66.1	68.2	-	-
06/02/16 15:00	3	63.7	63.5	49.3	63.7	-	-
06/02/16 16:00	6	65.4	65.3	49.3	65.4	-	-
06/02/16 17:00	5	56.8	56.0	49.2	56.8	-	-
06/02/16 18:00	11	66.1	64.6	60.7	66.1	-	-
06/02/16 19:00	5	70.1	66.0	68.0	-	70.1	-
06/02/16 20:00	1	68.7	68.5	51.9	-	68.7	-
06/02/16 21:00	2	62.7	62.1	53.6	-	62.7	-
06/02/16 22:00	6	63.6	63.1	54.1	-	63.6	-
06/02/16 23:00	-	51.4	-	51.4	-	-	51.4
	75	66.0	65.9	60.9	65.0	67.4	66.6

Location: Mid Runway NMT # 3



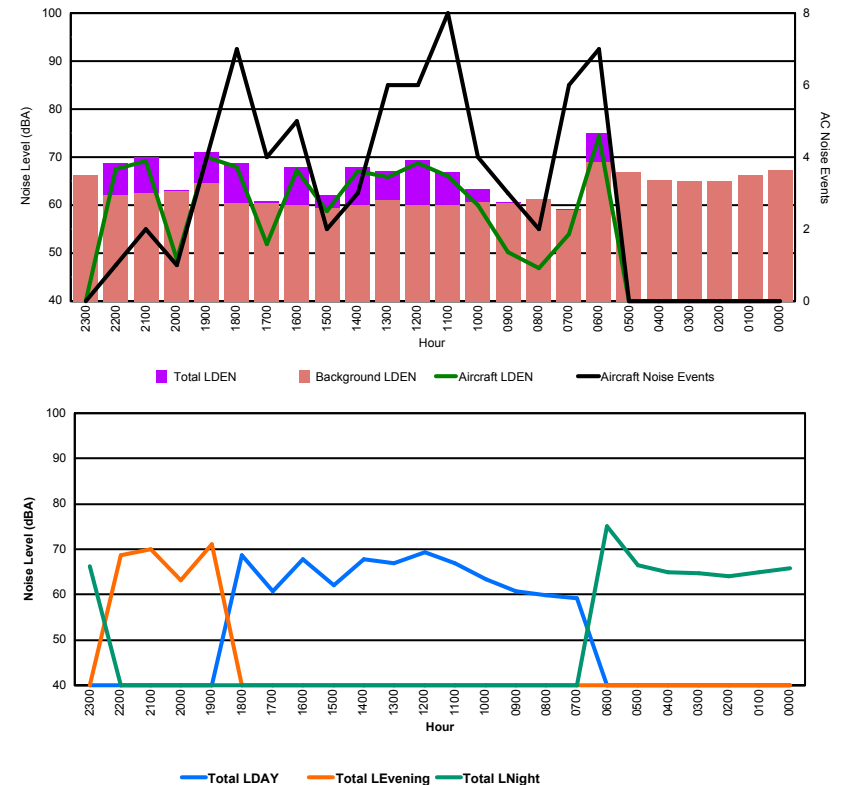


Luxembourg Airport Noise Distribution by Hour

Between 06/02/2016 00:00:00 and 06/02/2016 23:59:59 (Local Time)

Day	Aircraft Events	Total LDEN dB (A)	Aircraft LDEN dB(A)	Background LDEN dB(A)	Total LDay dB(A)	Total LEvening dB(A)	Total LNight dB (A)
06/02/16 0:00	-	65.8	-	67.2	-	-	65.8
06/02/16 1:00	-	65.0	-	66.2	-	-	65.0
06/02/16 2:00	-	64.1	-	64.9	-	-	64.1
06/02/16 3:00	-	64.8	-	65.0	-	-	64.8
06/02/16 4:00	-	65.0	-	65.2	-	-	65.0
06/02/16 5:00	-	66.4	-	66.9	-	-	66.4
06/02/16 6:00	7	75.1	74.3	69.0	-	-	75.1
06/02/16 7:00	6	59.1	54.0	58.9	59.1	-	-
06/02/16 8:00	2	59.8	46.8	61.3	59.8	-	-
06/02/16 9:00	3	60.7	50.2	60.4	60.7	-	-
06/02/16 10:00	4	63.3	60.0	60.7	63.3	-	-
06/02/16 11:00	8	66.9	66.0	59.9	66.9	-	-
06/02/16 12:00	6	69.3	68.8	60.0	69.3	-	-
06/02/16 13:00	6	67.0	65.8	61.0	67.0	-	-
06/02/16 14:00	3	67.9	67.1	60.0	67.9	-	-
06/02/16 15:00	2	62.0	58.8	59.3	62.0	-	-
06/02/16 16:00	5	67.9	67.2	60.1	67.9	-	-
06/02/16 17:00	4	60.8	51.8	60.4	60.8	-	-
06/02/16 18:00	7	68.7	68.0	60.4	68.7	-	-
06/02/16 19:00	4	71.0	69.9	64.6	-	71.0	-
06/02/16 20:00	1	63.1	48.8	62.9	-	63.1	-
06/02/16 21:00	2	70.0	69.2	62.5	-	70.0	-
06/02/16 22:00	1	68.7	67.6	62.1	-	68.7	-
06/02/16 23:00	-	66.2	-	66.2	-	-	66.2
	71	67.5	67.0	63.8	65.8	69.0	68.5

Location: NDB-Hamm NMT # 4

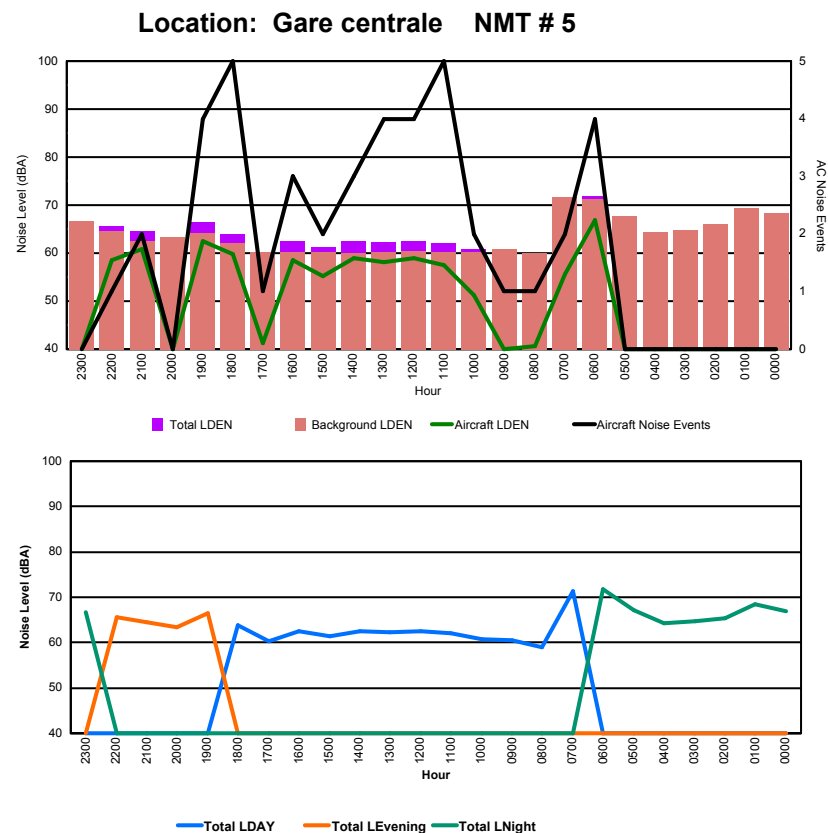




Luxembourg Airport Noise Distribution by Hour

Between 06/02/2016 00:00:00 and 06/02/2016 23:59:59 (Local Time)

Day	Aircraft Events	Total LDEN dB (A)	Aircraft LDEN dB(A)	Background LDEN dB(A)	Total LDay dB(A)	Total LEvening dB(A)	Total LNight dB (A)
06/02/16 0:00	-	67.0	-	68.3	-	-	67.0
06/02/16 1:00	-	68.5	-	69.3	-	-	68.5
06/02/16 2:00	-	65.3	-	66.1	-	-	65.3
06/02/16 3:00	-	64.7	-	64.8	-	-	64.7
06/02/16 4:00	-	64.2	-	64.3	-	-	64.2
06/02/16 5:00	-	67.1	-	67.7	-	-	67.1
06/02/16 6:00	4	71.8	66.8	71.2	-	-	71.8
06/02/16 7:00	2	71.3	55.7	71.7	71.3	-	-
06/02/16 8:00	1	58.9	40.7	60.1	58.9	-	-
06/02/16 9:00	1	60.6	38.8	60.8	60.6	-	-
06/02/16 10:00	2	60.8	51.2	60.3	60.8	-	-
06/02/16 11:00	5	62.0	57.6	60.2	62.0	-	-
06/02/16 12:00	4	62.6	58.9	60.4	62.6	-	-
06/02/16 13:00	4	62.2	58.2	60.2	62.2	-	-
06/02/16 14:00	3	62.4	58.9	60.0	62.4	-	-
06/02/16 15:00	2	61.3	55.2	60.2	61.3	-	-
06/02/16 16:00	3	62.5	58.6	60.3	62.5	-	-
06/02/16 17:00	1	60.2	41.2	60.2	60.2	-	-
06/02/16 18:00	5	63.9	59.7	62.0	63.9	-	-
06/02/16 19:00	4	66.4	62.6	64.2	-	66.4	-
06/02/16 20:00	-	63.4	-	63.4	-	63.4	-
06/02/16 21:00	2	64.6	60.9	62.4	-	64.6	-
06/02/16 22:00	1	65.6	58.6	64.6	-	65.6	-
06/02/16 23:00	-	66.6	-	66.6	-	-	66.6
	44	65.7	59.4	65.5	64.0	65.1	67.6



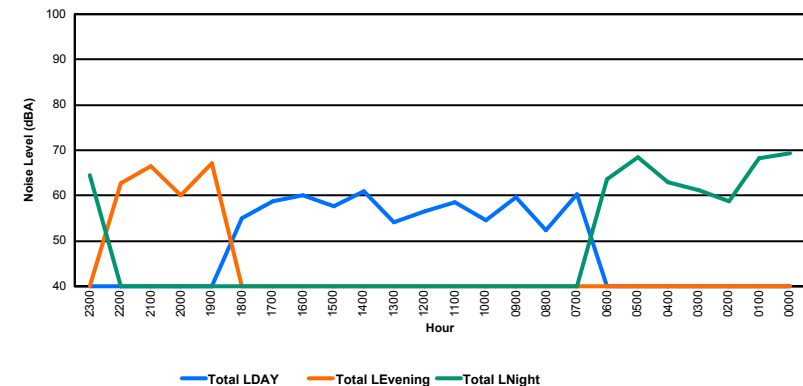
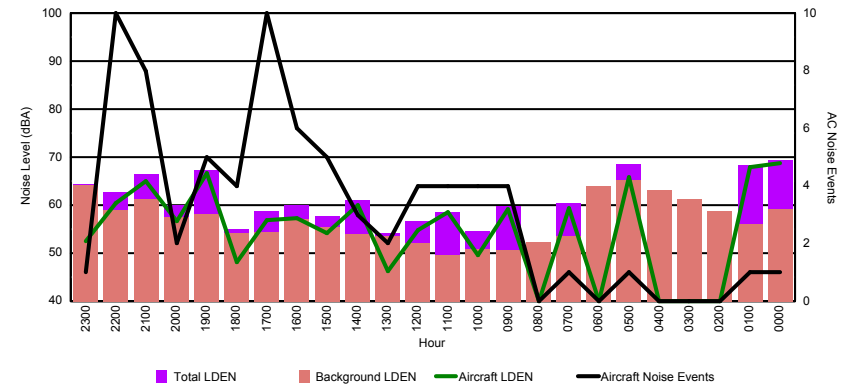


Luxembourg Airport Noise Distribution by Hour

Between 07/02/2016 00:00:00 and 07/02/2016 23:59:59 (Local Time)

Day	Aircraft Events	Total LDEN dB (A)	Aircraft LDEN dB(A)	Background LDEN dB(A)	Total LDay dB(A)	Total LEvening dB(A)	Total LNight dB (A)
07/02/16 0:00	1	69.3	68.8	59.2	-	-	69.3
07/02/16 1:00	1	68.3	68.0	56.0	-	-	68.3
07/02/16 2:00	-	58.7	-	58.7	-	-	58.7
07/02/16 3:00	-	61.2	-	61.2	-	-	61.2
07/02/16 4:00	-	63.0	-	63.1	-	-	63.0
07/02/16 5:00	1	68.5	65.8	65.3	-	-	68.5
07/02/16 6:00	-	63.7	-	63.9	-	-	63.7
07/02/16 7:00	1	60.4	59.4	53.5	60.4	-	-
07/02/16 8:00	-	52.3	-	52.3	52.3	-	-
07/02/16 9:00	4	59.7	59.2	50.6	59.7	-	-
07/02/16 10:00	4	54.5	49.6	50.8	54.5	-	-
07/02/16 11:00	4	58.6	58.6	49.5	58.6	-	-
07/02/16 12:00	4	56.6	54.8	52.0	56.6	-	-
07/02/16 13:00	2	54.2	46.2	53.6	54.2	-	-
07/02/16 14:00	3	61.0	60.1	53.9	61.0	-	-
07/02/16 15:00	5	57.7	54.1	55.4	57.7	-	-
07/02/16 16:00	6	60.0	57.2	57.0	60.0	-	-
07/02/16 17:00	10	58.7	56.8	54.4	58.7	-	-
07/02/16 18:00	4	55.0	48.2	54.1	55.0	-	-
07/02/16 19:00	5	67.2	66.6	58.1	-	67.2	-
07/02/16 20:00	2	60.0	56.6	57.4	-	60.0	-
07/02/16 21:00	8	66.4	65.0	61.2	-	66.4	-
07/02/16 22:00	10	62.7	60.5	59.0	-	62.7	-
07/02/16 23:00	1	64.4	52.5	64.2	-	-	64.4
	76	63.3	62.3	59.2	58.1	64.9	66.0

Location: Roodt/Syr NMT # 1

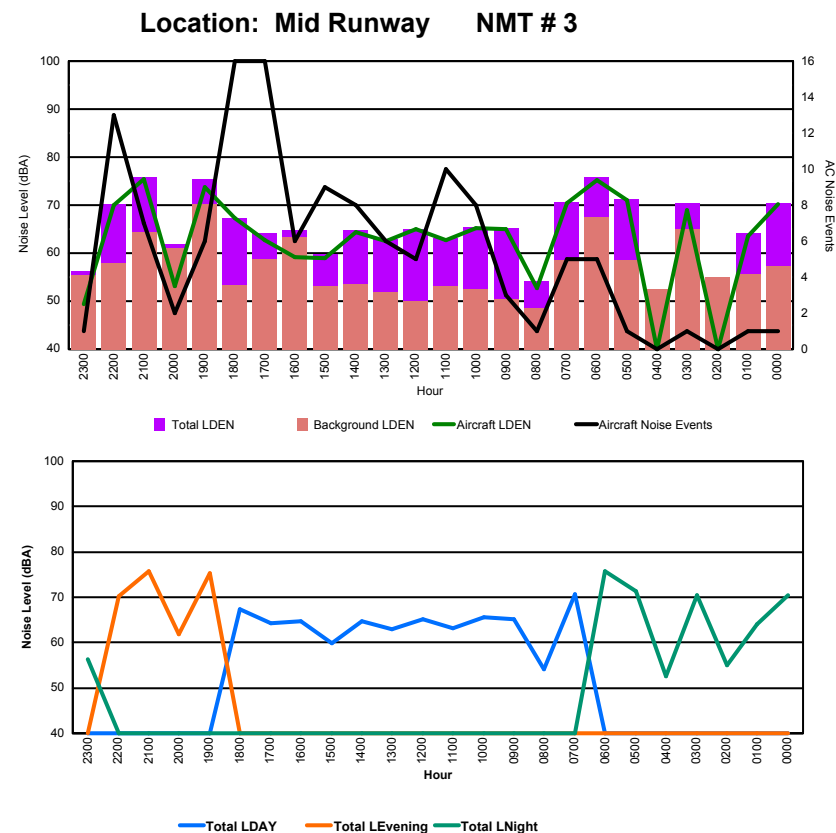




Luxembourg Airport Noise Distribution by Hour

Between 07/02/2016 00:00:00 and 07/02/2016 23:59:59 (Local Time)

Day	Aircraft Events	Total LDEN dB (A)	Aircraft LDEN dB(A)	Background LDEN dB(A)	Total LDay dB(A)	Total LEvening dB(A)	Total LNight dB (A)
07/02/16 0:00	1	70.5	70.3	57.2	-	-	70.5
07/02/16 1:00	1	64.1	63.5	55.6	-	-	64.1
07/02/16 2:00	-	54.9	-	54.9	-	-	54.9
07/02/16 3:00	1	70.4	68.9	64.9	-	-	70.4
07/02/16 4:00	-	52.5	-	52.5	-	-	52.5
07/02/16 5:00	1	71.3	71.0	58.6	-	-	71.3
07/02/16 6:00	5	75.8	75.2	67.4	-	-	75.8
07/02/16 7:00	5	70.7	70.4	58.6	70.7	-	-
07/02/16 8:00	1	54.2	52.8	48.6	54.2	-	-
07/02/16 9:00	3	65.2	65.1	50.5	65.2	-	-
07/02/16 10:00	8	65.5	65.3	52.5	65.5	-	-
07/02/16 11:00	10	63.2	62.8	53.1	63.2	-	-
07/02/16 12:00	5	65.1	64.9	50.0	65.1	-	-
07/02/16 13:00	6	63.0	62.6	51.9	63.0	-	-
07/02/16 14:00	8	64.8	64.4	53.6	64.8	-	-
07/02/16 15:00	9	59.8	58.9	53.1	59.8	-	-
07/02/16 16:00	6	64.8	59.2	63.3	64.8	-	-
07/02/16 17:00	16	64.2	62.8	58.7	64.2	-	-
07/02/16 18:00	16	67.3	67.2	53.4	67.3	-	-
07/02/16 19:00	6	75.4	73.8	70.2	-	75.4	-
07/02/16 20:00	2	61.8	53.2	61.1	-	61.8	-
07/02/16 21:00	7	75.8	75.5	64.4	-	75.8	-
07/02/16 22:00	13	70.2	69.9	57.9	-	70.2	-
07/02/16 23:00	1	56.3	49.3	55.4	-	-	56.3
	131	69.3	68.9	61.1	65.4	73.3	69.8

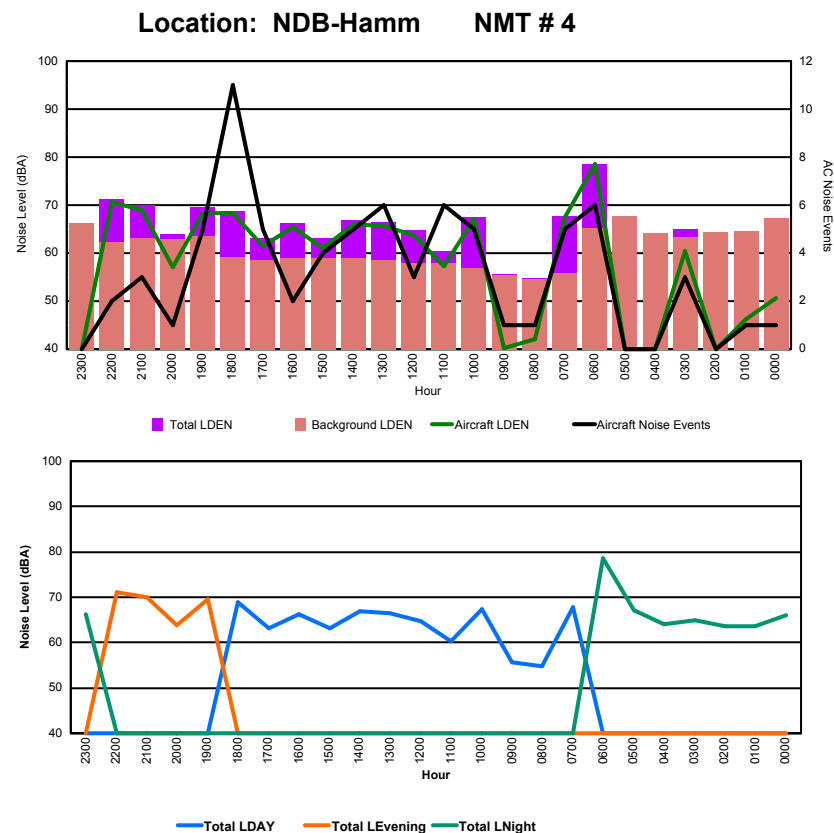




Luxembourg Airport Noise Distribution by Hour

Between 07/02/2016 00:00:00 and 07/02/2016 23:59:59 (Local Time)

Day	Aircraft Events	Total LDEN dB (A)	Aircraft LDEN dB(A)	Background LDEN dB(A)	Total LDay dB(A)	Total LEvening dB(A)	Total LNight dB (A)
07/02/16 0:00	1	66.0	50.7	67.2	-	-	66.0
07/02/16 1:00	1	63.7	46.3	64.6	-	-	63.7
07/02/16 2:00	-	63.6	-	64.4	-	-	63.6
07/02/16 3:00	3	65.0	60.4	63.3	-	-	65.0
07/02/16 4:00	-	64.1	-	64.2	-	-	64.1
07/02/16 5:00	-	67.1	-	67.7	-	-	67.1
07/02/16 6:00	6	78.6	78.5	65.2	-	-	78.6
07/02/16 7:00	5	67.7	67.4	55.8	67.7	-	-
07/02/16 8:00	1	54.8	42.0	54.6	54.8	-	-
07/02/16 9:00	1	55.7	40.3	55.5	55.7	-	-
07/02/16 10:00	5	67.4	67.0	56.8	67.4	-	-
07/02/16 11:00	6	60.4	57.2	57.9	60.4	-	-
07/02/16 12:00	3	64.8	63.8	58.0	64.8	-	-
07/02/16 13:00	6	66.4	65.7	58.5	66.4	-	-
07/02/16 14:00	5	66.9	66.1	59.0	66.9	-	-
07/02/16 15:00	4	63.1	61.1	58.9	63.1	-	-
07/02/16 16:00	2	66.3	65.4	59.0	66.3	-	-
07/02/16 17:00	5	63.2	61.5	58.6	63.2	-	-
07/02/16 18:00	11	68.8	68.3	59.2	68.8	-	-
07/02/16 19:00	5	69.6	68.4	63.5	-	69.6	-
07/02/16 20:00	1	63.9	57.0	63.0	-	63.9	-
07/02/16 21:00	3	69.9	69.0	63.1	-	69.9	-
07/02/16 22:00	2	71.2	70.7	62.2	-	71.2	-
07/02/16 23:00	-	66.2	-	66.2	-	-	66.2
	76	68.6	68.2	62.7	65.4	69.4	70.8





Luxembourg Airport Noise Distribution by Hour

Between 07/02/2016 00:00:00 and 07/02/2016 23:59:59 (Local Time)

Day	Aircraft Events	Total LDEN dB (A)	Aircraft LDEN dB(A)	Background LDEN dB(A)	Total LDay dB(A)	Total LEvening dB(A)	Total LNight dB (A)
07/02/16 0:00	-	66.1	-	67.5	-	-	66.1
07/02/16 1:00	-	65.0	-	66.2	-	-	65.0
07/02/16 2:00	-	64.3	-	65.0	-	-	64.3
07/02/16 3:00	1	64.6	55.5	64.1	-	-	64.6
07/02/16 4:00	-	65.6	-	65.7	-	-	65.6
07/02/16 5:00	-	68.1	-	68.7	-	-	68.1
07/02/16 6:00	6	72.2	71.0	67.2	-	-	72.2
07/02/16 7:00	4	66.8	59.2	66.4	66.8	-	-
07/02/16 8:00	1	59.2	48.7	59.7	59.2	-	-
07/02/16 9:00	-	57.5	-	57.5	57.5	-	-
07/02/16 10:00	4	61.5	58.5	58.5	61.5	-	-
07/02/16 11:00	4	63.4	50.0	63.2	63.4	-	-
07/02/16 12:00	2	61.3	57.9	58.8	61.3	-	-
07/02/16 13:00	2	60.6	57.2	58.1	60.6	-	-
07/02/16 14:00	2	60.7	57.1	58.3	60.7	-	-
07/02/16 15:00	1	59.8	52.9	58.9	59.8	-	-
07/02/16 16:00	1	61.6	55.5	60.4	61.6	-	-
07/02/16 17:00	3	61.0	54.2	60.2	61.0	-	-
07/02/16 18:00	4	61.7	58.2	58.7	61.7	-	-
07/02/16 19:00	4	66.0	63.8	63.2	-	66.0	-
07/02/16 20:00	-	65.0	-	65.1	-	65.0	-
07/02/16 21:00	3	65.4	62.2	62.7	-	65.4	-
07/02/16 22:00	2	65.6	62.9	62.3	-	65.6	-
07/02/16 23:00	-	67.5	-	67.5	-	-	67.5
	44	65.1	61.7	64.0	61.9	65.5	67.5

Location: Gare centrale NMT # 5

