

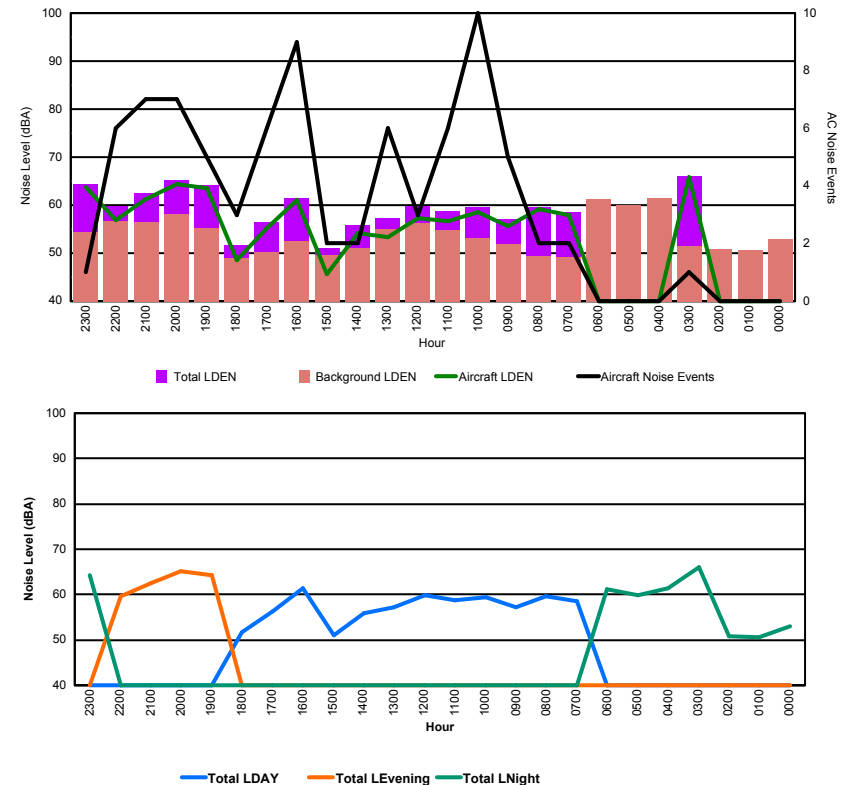


Luxembourg Airport Noise Distribution by Hour

Between 04/02/2016 00:00:00 and 04/02/2016 23:59:59 (Local Time)

Day	Aircraft Events	Total LDEN dB (A)	Aircraft LDEN dB(A)	Background LDEN dB(A)	Total LDay dB(A)	Total LEvening dB(A)	Total LNight dB (A)
04/02/16 0:00	-	53.0	-	53.0	-	-	53.0
04/02/16 1:00	-	50.6	-	50.6	-	-	50.6
04/02/16 2:00	-	50.8	-	50.8	-	-	50.8
04/02/16 3:00	1	66.0	65.8	51.5	-	-	66.0
04/02/16 4:00	-	61.5	-	61.5	-	-	61.5
04/02/16 5:00	-	59.9	-	59.9	-	-	59.9
04/02/16 6:00	-	61.2	-	61.3	-	-	61.2
04/02/16 7:00	2	58.5	57.9	49.1	58.5	-	-
04/02/16 8:00	2	59.6	59.1	49.4	59.6	-	-
04/02/16 9:00	5	57.1	55.6	51.8	57.1	-	-
04/02/16 10:00	10	59.5	58.5	53.2	59.5	-	-
04/02/16 11:00	6	58.7	56.6	54.7	58.7	-	-
04/02/16 12:00	3	59.8	57.3	56.3	59.8	-	-
04/02/16 13:00	6	57.2	53.3	55.1	57.2	-	-
04/02/16 14:00	2	55.8	54.1	51.0	55.8	-	-
04/02/16 15:00	2	51.0	45.6	49.5	51.0	-	-
04/02/16 16:00	9	61.5	61.0	52.4	61.5	-	-
04/02/16 17:00	6	56.4	55.2	50.3	56.4	-	-
04/02/16 18:00	3	51.7	48.6	48.9	51.7	-	-
04/02/16 19:00	5	64.2	63.6	55.3	-	64.2	-
04/02/16 20:00	7	65.2	64.3	58.1	-	65.2	-
04/02/16 21:00	7	62.4	61.2	56.4	-	62.4	-
04/02/16 22:00	6	59.7	56.8	56.7	-	59.7	-
04/02/16 23:00	1	64.3	63.8	54.3	-	-	64.3
	83	60.5	60.2	55.6	58.1	63.3	61.3

Location: Roodt/Syr NMT # 1



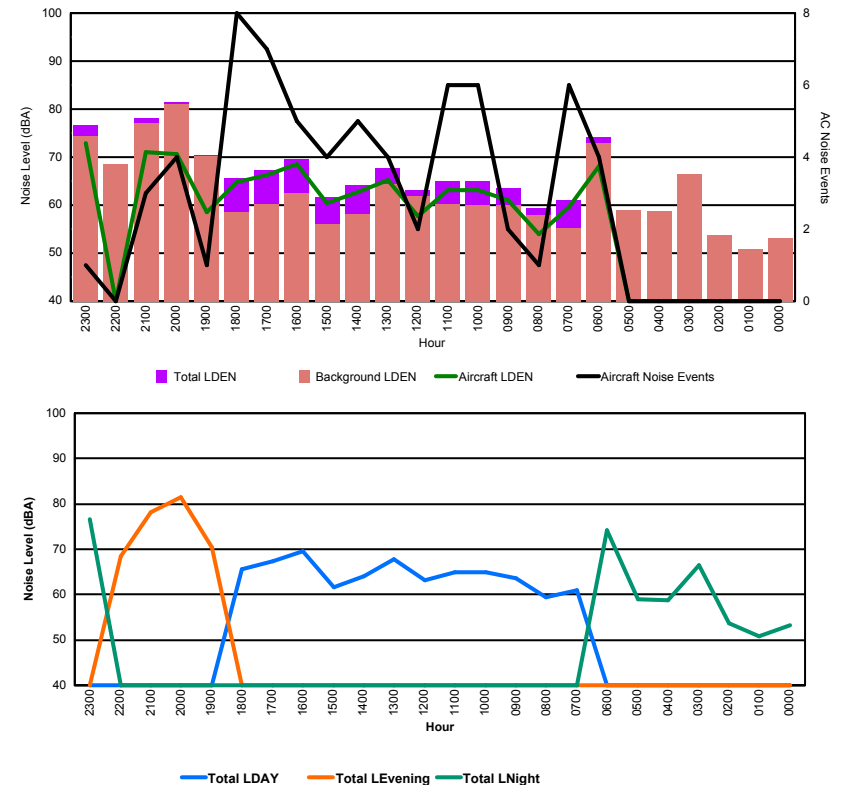


Luxembourg Airport Noise Distribution by Hour

Between 04/02/2016 00:00:00 and 04/02/2016 23:59:59 (Local Time)

Day	Aircraft Events	Total LDEN dB (A)	Aircraft LDEN dB(A)	Background LDEN dB(A)	Total LDay dB(A)	Total LEvening dB(A)	Total LNight dB (A)
04/02/16 0:00	-	53.2	-	53.2	-	-	53.2
04/02/16 1:00	-	50.8	-	50.8	-	-	50.8
04/02/16 2:00	-	53.7	-	53.7	-	-	53.7
04/02/16 3:00	-	66.4	-	66.4	-	-	66.4
04/02/16 4:00	-	58.7	-	58.7	-	-	58.7
04/02/16 5:00	-	59.0	-	59.0	-	-	59.0
04/02/16 6:00	4	74.2	68.2	72.9	-	-	74.2
04/02/16 7:00	6	61.0	59.6	55.2	61.0	-	-
04/02/16 8:00	1	59.4	54.0	57.9	59.4	-	-
04/02/16 9:00	2	63.5	61.1	59.9	63.5	-	-
04/02/16 10:00	6	64.9	63.2	60.0	64.9	-	-
04/02/16 11:00	6	64.9	63.2	60.2	64.9	-	-
04/02/16 12:00	2	63.2	57.8	61.8	63.2	-	-
04/02/16 13:00	4	67.7	65.2	64.3	67.7	-	-
04/02/16 14:00	5	64.1	62.8	58.1	64.1	-	-
04/02/16 15:00	4	61.7	60.4	56.1	61.7	-	-
04/02/16 16:00	5	69.5	68.5	62.6	69.5	-	-
04/02/16 17:00	7	67.3	66.3	60.3	67.3	-	-
04/02/16 18:00	8	65.6	64.7	58.6	65.6	-	-
04/02/16 19:00	1	70.4	58.6	70.2	-	70.4	-
04/02/16 20:00	4	81.4	70.7	81.0	-	81.4	-
04/02/16 21:00	3	78.1	71.0	77.1	-	78.1	-
04/02/16 22:00	-	68.5	-	68.5	-	68.5	-
04/02/16 23:00	1	76.7	73.0	74.3	-	-	76.7
	69	71.5	66.7	70.4	65.3	77.4	70.0

Location: Mid Runway NMT # 3



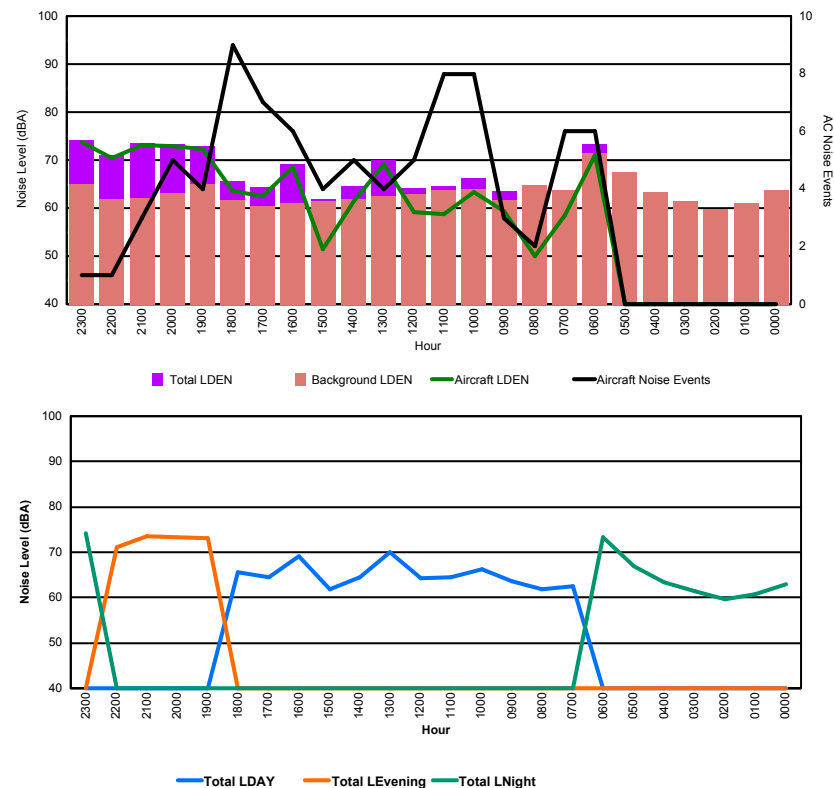


Luxembourg Airport Noise Distribution by Hour

Between 04/02/2016 00:00:00 and 04/02/2016 23:59:59 (Local Time)

Day	Aircraft Events	Total LDEN dB (A)	Aircraft LDEN dB(A)	Background LDEN dB(A)	Total LDay dB(A)	Total LEvening dB(A)	Total LNight dB (A)
04/02/16 0:00	-	63.0	-	63.7	-	-	63.0
04/02/16 1:00	-	60.8	-	61.0	-	-	60.8
04/02/16 2:00	-	59.7	-	59.8	-	-	59.7
04/02/16 3:00	-	61.5	-	61.5	-	-	61.5
04/02/16 4:00	-	63.3	-	63.4	-	-	63.3
04/02/16 5:00	-	66.9	-	67.5	-	-	66.9
04/02/16 6:00	6	73.3	71.0	71.4	-	-	73.3
04/02/16 7:00	6	62.5	58.5	63.8	62.5	-	-
04/02/16 8:00	2	61.8	50.0	64.7	61.8	-	-
04/02/16 9:00	3	63.6	59.4	61.7	63.6	-	-
04/02/16 10:00	8	66.3	63.3	64.0	66.3	-	-
04/02/16 11:00	8	64.6	58.8	63.7	64.6	-	-
04/02/16 12:00	5	64.2	59.2	63.0	64.2	-	-
04/02/16 13:00	4	70.0	69.2	62.6	70.0	-	-
04/02/16 14:00	5	64.6	61.4	61.9	64.6	-	-
04/02/16 15:00	4	61.8	51.5	61.4	61.8	-	-
04/02/16 16:00	6	69.2	68.5	61.0	69.2	-	-
04/02/16 17:00	7	64.4	62.4	60.4	64.4	-	-
04/02/16 18:00	9	65.6	63.6	61.6	65.6	-	-
04/02/16 19:00	4	73.0	72.2	65.1	-	73.0	-
04/02/16 20:00	5	73.4	73.0	63.1	-	73.4	-
04/02/16 21:00	3	73.6	73.2	62.1	-	73.6	-
04/02/16 22:00	1	71.1	70.5	61.9	-	71.1	-
04/02/16 23:00	1	74.2	73.7	64.9	-	-	74.2
	87	68.8	68.6	64.1	65.7	72.9	68.8

Location: NDB-Hamm NMT # 4





Luxembourg Airport Noise Distribution by Hour

Between 04/02/2016 00:00:00 and 04/02/2016 23:59:59 (Local Time)

Day	Aircraft Events	Total LDEN dB (A)	Aircraft LDEN dB(A)	Background LDEN dB(A)	Total LDay dB(A)	Total LEvening dB(A)	Total LNight dB (A)
04/02/16 0:00	-	64.1	-	64.9	-	-	64.1
04/02/16 1:00	-	63.7	-	63.9	-	-	63.7
04/02/16 2:00	-	60.8	-	60.9	-	-	60.8
04/02/16 3:00	-	59.8	-	59.8	-	-	59.8
04/02/16 4:00	-	69.3	-	69.3	-	-	69.3
04/02/16 5:00	-	69.7	-	71.1	-	-	69.7
04/02/16 6:00	4	71.8	64.8	72.9	-	-	71.8
04/02/16 7:00	4	71.3	57.2	74.2	71.3	-	-
04/02/16 8:00	2	65.0	52.1	67.8	65.0	-	-
04/02/16 9:00	3	66.5	54.7	67.1	66.5	-	-
04/02/16 10:00	3	64.9	55.4	64.5	64.9	-	-
04/02/16 11:00	6	64.8	57.0	65.7	64.8	-	-
04/02/16 12:00	2	63.8	53.5	64.6	63.8	-	-
04/02/16 13:00	4	65.6	59.8	65.6	65.6	-	-
04/02/16 14:00	1	66.4	51.3	66.8	66.4	-	-
04/02/16 15:00	1	69.3	56.3	69.7	69.3	-	-
04/02/16 16:00	5	65.1	61.0	64.0	65.1	-	-
04/02/16 17:00	5	64.7	57.6	64.5	64.7	-	-
04/02/16 18:00	7	63.6	55.9	63.4	63.6	-	-
04/02/16 19:00	4	69.7	64.5	68.6	-	69.7	-
04/02/16 20:00	4	68.5	64.5	66.6	-	68.5	-
04/02/16 21:00	3	67.8	63.8	65.8	-	67.8	-
04/02/16 22:00	1	65.4	60.9	63.6	-	65.4	-
04/02/16 23:00	1	69.5	65.1	67.7	-	-	69.5
	60	67.3	60.7	67.8	66.6	68.1	67.9

Location: Gare centrale NMT # 5

